
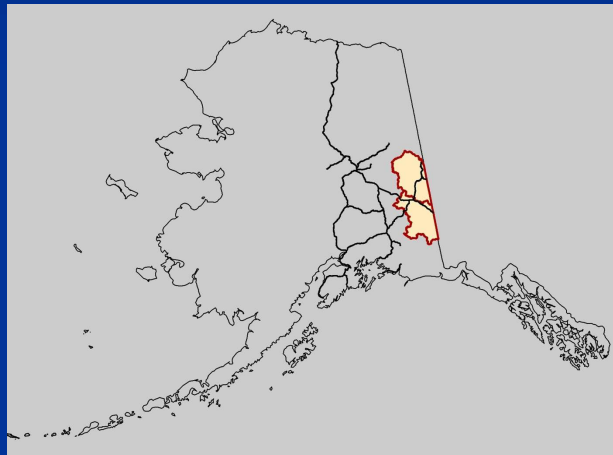


Tok Overview
Slide 1



Tok ADF&G Wildlife Program – 2024



1

Tok Overview
Slide 2

Tok ADF&G Office and Staff



Jeff Gross



Marie Jamison



Aidan Hunter



Tess Faulise



**Downtown
Tok (-73° F)**

2

Tok Overview
Slide 3

Tok Area

- Diverse Habitat
- Diverse Land Ownership
- 13 Communities
- 3 ACs

3

Tok Overview
Slide 4

Controlled Use Areas (CUA)

- Glacier Mountain CUA (Unit 20E)
- Ladue River CUA (Unit 20E)

4

Management Areas

Tok Overview
Slide 5

- Tok Management Area (Unit 12)
 - Trophy Sheep Management
 - Uncrowded Hunting Conditions

The map displays several management units: 20D to the northwest, 20E to the northeast, 13C to the southwest, and 12 to the southeast. The Tok Management Area (Unit 12) is highlighted in orange. A legend indicates that black lines represent highways, blue lines represent rivers and streams, and red outlines represent Game Management Units (GMUs). A scale bar at the bottom right shows distances of 0, 5, 10, and 20 miles.

5

Caribou – Chisana Herd

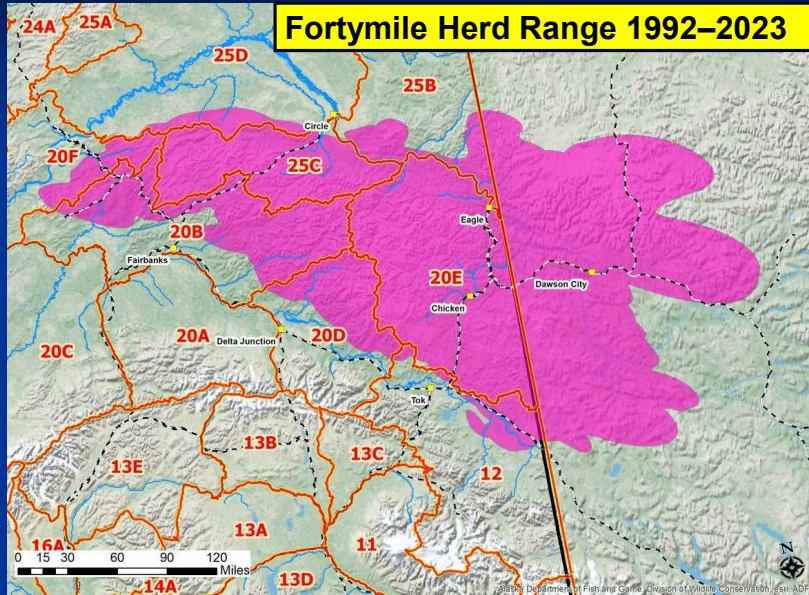
Tok Overview
Slide 6

The map shows the Chisana Caribou Herd Range in brown, spanning across the Alaska-Yukon border. Key locations include Chisana, Beaver Creek, and the Chisana National Preserve. Other areas shown include Wangell-St. Elias National Park and Preserve, Aai Kiyi Natural Environment Park, Klusane National Park, and the Klusane National Preserve. A scale bar at the bottom indicates distances up to 50 kilometers. An inset photograph in the top right corner shows a herd of caribou grazing in a valley with snow-capped mountains in the background.

6

Caribou – Fortymile Herd

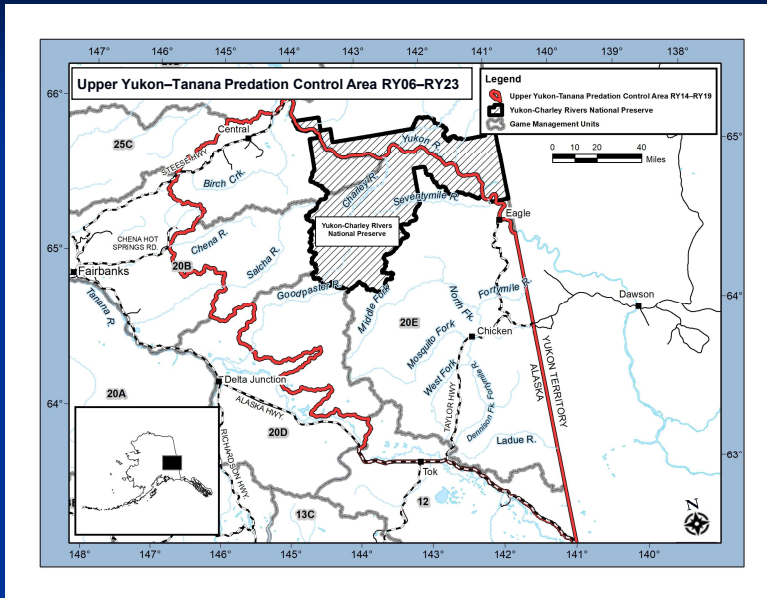
Tok Overview
Slide 7



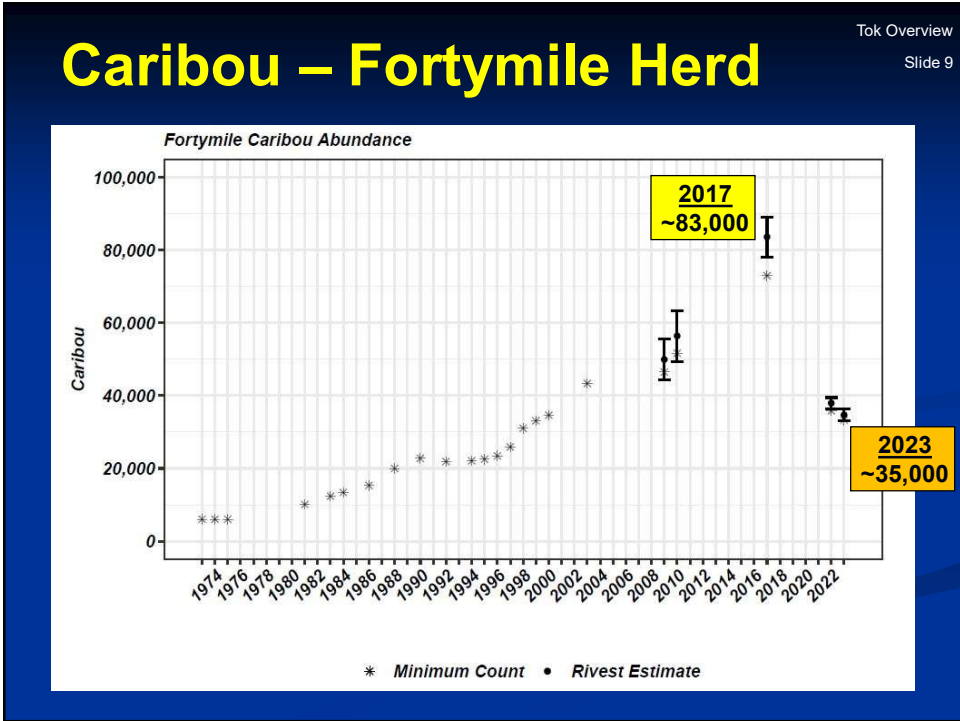
7

Caribou – Fortymile Herd

Tok Overview
Slide 8



8



9

Moose – Unit 12

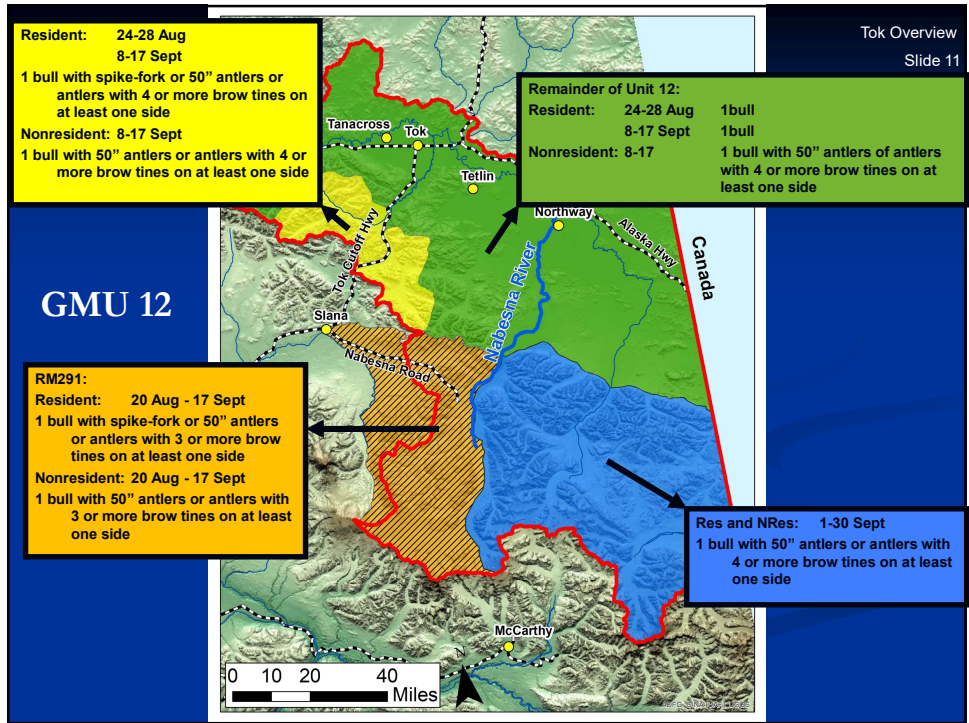
Tok Overview
Slide 10

High Levels of Human Use
Intensive Management Objectives

- Population 4,000–6,000
- Harvest 150–300

Current Population Estimate = 5,400–7,700
RY18–RY22 Harvest = 130 (avg.)

10



11

Tok Overview
Slide 12

Moose – Unit 12

Management Activities

- Population surveys
- Harvest Monitoring
 - General Harvest Reports
- Twinning counts
- Periodic browse surveys

12

Tok Overview
Slide 13

Moose – Unit 20E

High Levels of Human Use

Intensive Management Objectives

- Population 8,000–10,000
- Harvest 250–500

2023 Population Estimate ~ 4,000–5,400

- 2019 Est. = 5,700–7,700

RY22–RY23 Harvest = 158/yr (range 155-160)

- RY14–RY21 = 220/yr (range 195–245)

13

Tok Overview
Slide 14

Unit 20E drainages of the Middle Fork of the Fortymile River upstream from and including the Joseph Creek drainage:

RESIDENT:	24-28 August	1 bull
	8-17 September	1 bull
NONRESIDENT:	8-17 September	1 bull with 50-inch antlers or antlers with from and including the 4 or more brow tines on at least one side.

Remainder of Unit 20E:

RESIDENT:	Registration	24-28 August	1 bull by permit RM865
	Registration	8-17 September	1 bull by permit RM865
	Drawing	1 Nov.- 10 Dec.	or 1 bull by permit DM 794 - DM796 in the Ladue River Controlled Use Area
NONRESIDENT:	Registration	8-17 September	1 bull with 50-inch antlers or antlers with 4 or more brow tines on at least one side by permit RM865

14

Tok Overview
Slide 15

Moose – Unit 20E

Management Activities

- Population surveys
- Twinning counts
- Marked cows – survival and movement
- Periodic browse surveys
- Harvest Monitoring
 - Registration Harvest Reports

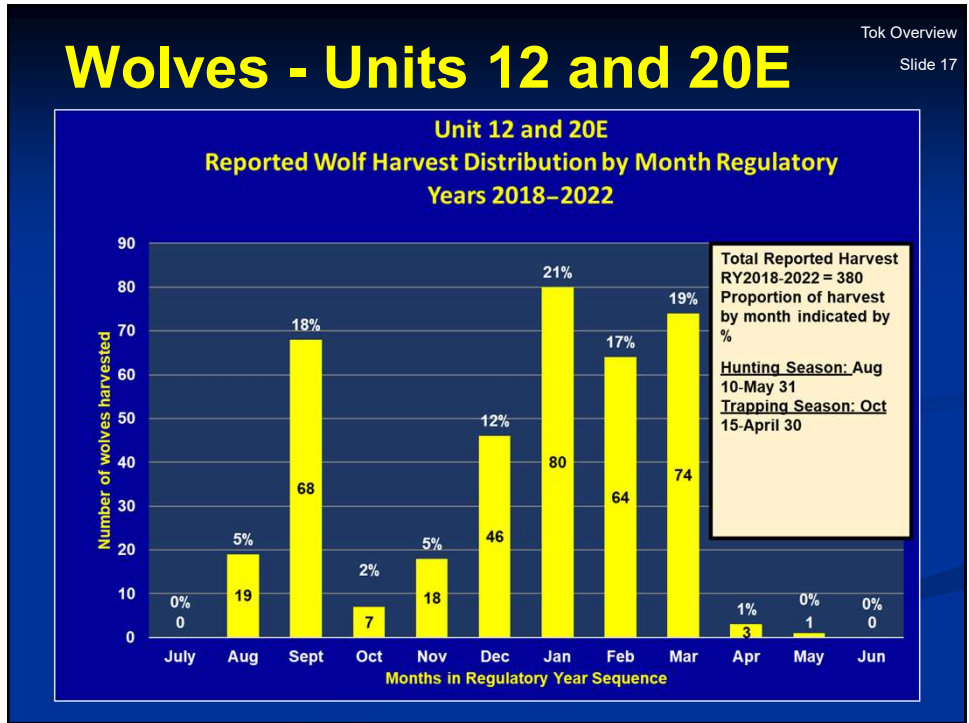
15

Tok Overview
Slide 16

Wolves - Units 12 and 20E

- High densities
- Primary management related to Wolf Control Programs

16



17

Grizzly Bears

Tok Overview
Slide 18

Units 12 and 20E

- Relatively high densities
- Baiting allowed since RY12
- Harvest (avg. since RY12)**
 - Unit 12: **24** bears/year
 - **7/yr** (avg) over bait
 - Unit 20E: **17** bears/year
 - **2/yr** (avg) over bait
 - Sustainable Levels




18

Tok Overview
Slide 19

Black Bears



© Folt Hicker

19

Tok Overview
Slide 20

Sheep

Tok Management Area draw permit (RY17-RY23)

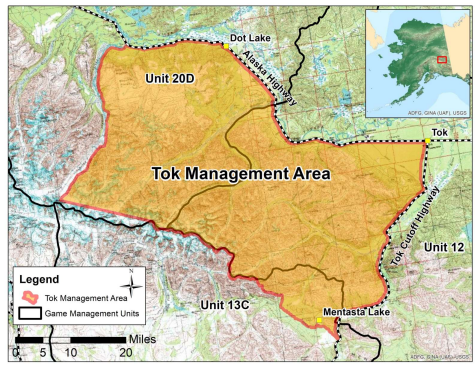
- 10–101 permits annually
- 3–56 rams annually

Mt. Harper draw permit

- 4 permits, 0–2 rams annually

General harvest ticket (RY18-RY22)

- Unit 12: Avg. 104 rams annually
- Unit 20E: Avg. 3 rams annually



20

Tok Overview
Slide 21

Sheep

Management Activities

- Annual Survey –TMA
- Periodic Surveys
 - Unit 12 – N. Wrangell Mts.
 - Unit 20E – Tanana Hills
- Seal ~20–60 Rams/Year



21

Tok Overview
Slide 22

Furbearers



22

Tok Overview
Slide 23

Small Game



This slide features a collage of five photographs of small game birds in winter environments. The top-left image shows a white ptarmigan in a snowy field. The top-middle image shows a brown and white ptarmigan in a field of dry grass. The top-right image shows a green partridge in a snowy landscape. The bottom-left image shows a black grouse with its tail feathers fanned out on a branch. The bottom-right image shows a brown quail in a snowy field.

23

Tok Overview
Slide 24

Questions?



This slide features a large photograph of a reindeer with large, dark antlers running across a snowy, mountainous landscape. The reindeer is in the foreground, moving from left to right. The background shows a range of snow-capped mountains under a cloudy sky.

24