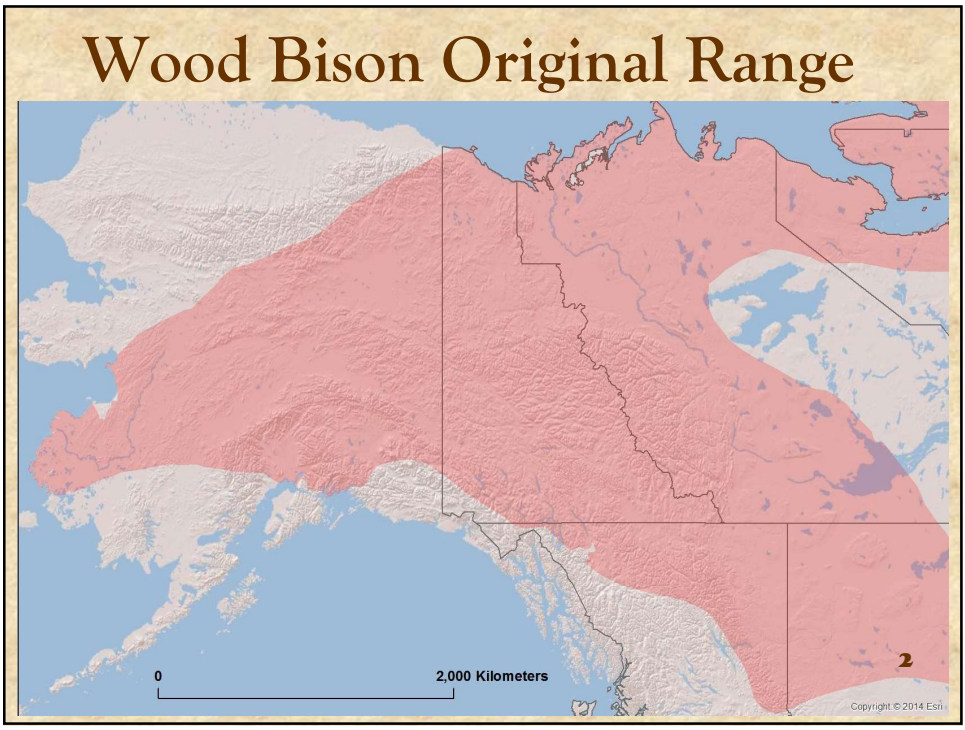




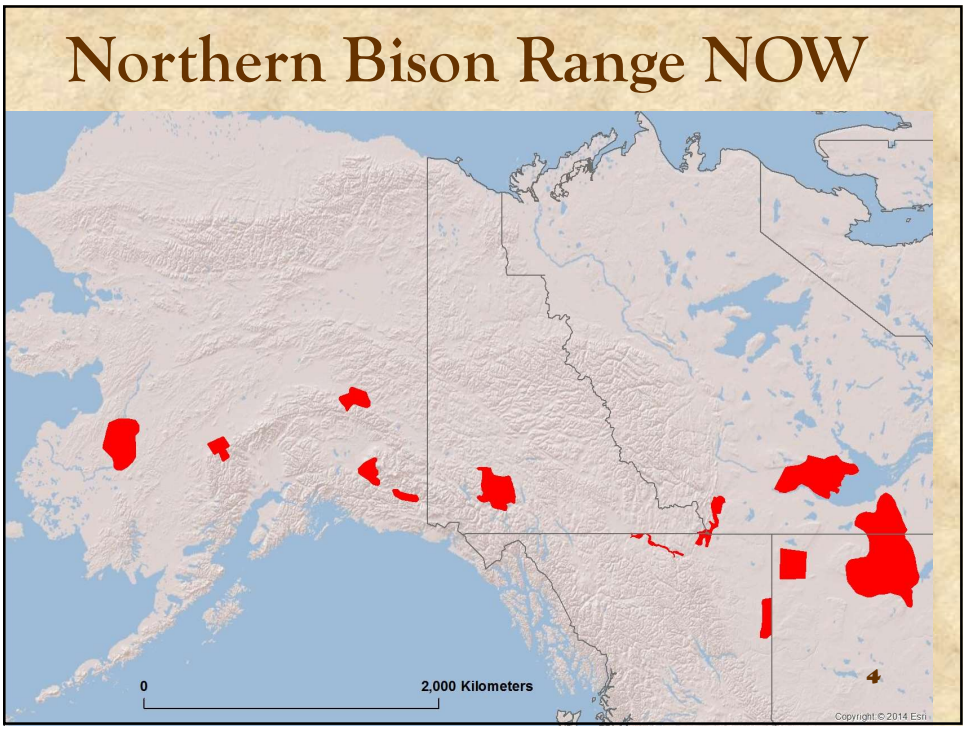
1



2

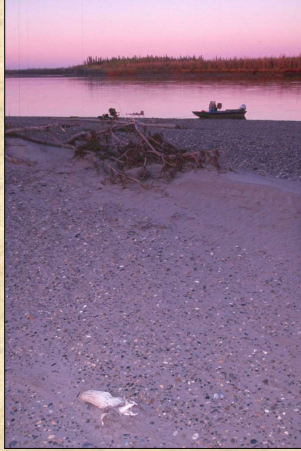


3



4

Wood bison bones are present across much of Alaska.



Bison horn core found on the Porcupine River

5

5

Native elders provided historic accounts of wood bison



The late Reverend David Salmon, Chalkyitsik, AK

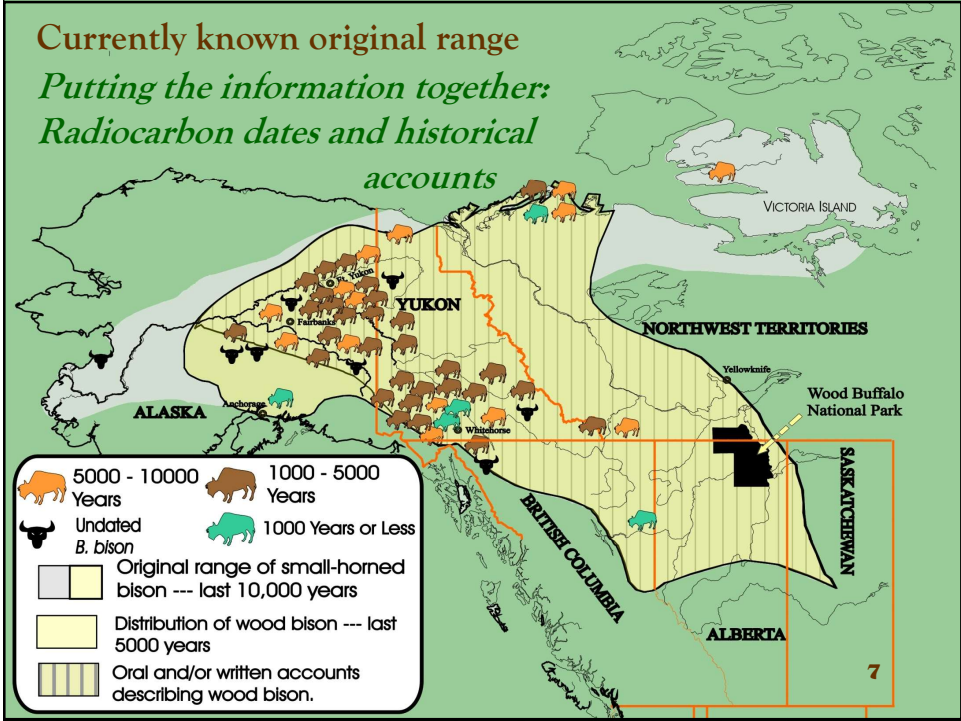
- Bison were hunted and used as a source of food and materials.
- Bison disappeared within last few centuries.



The late Mary Sam Beaver, AK

6

6



7



8

WHY?

- Conservation of the species in its wild state
- Benefits to the citizens



9

Milestones

- 1994 Feasibility Assessment
- 2007 Environmental Review
- 2013 Environmental Assessment
- 2014 Nonessential Experimental Designation
- 2015 Wild Release- Innoko
- 2022 Wild Release- Innoko



10

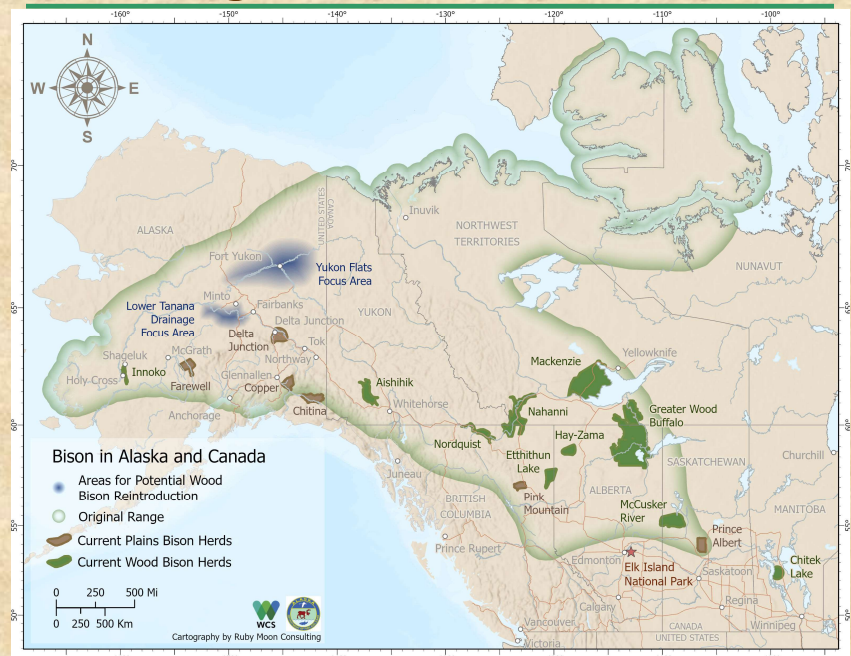
10

Local Involvement: Site Specific Planning Teams



11

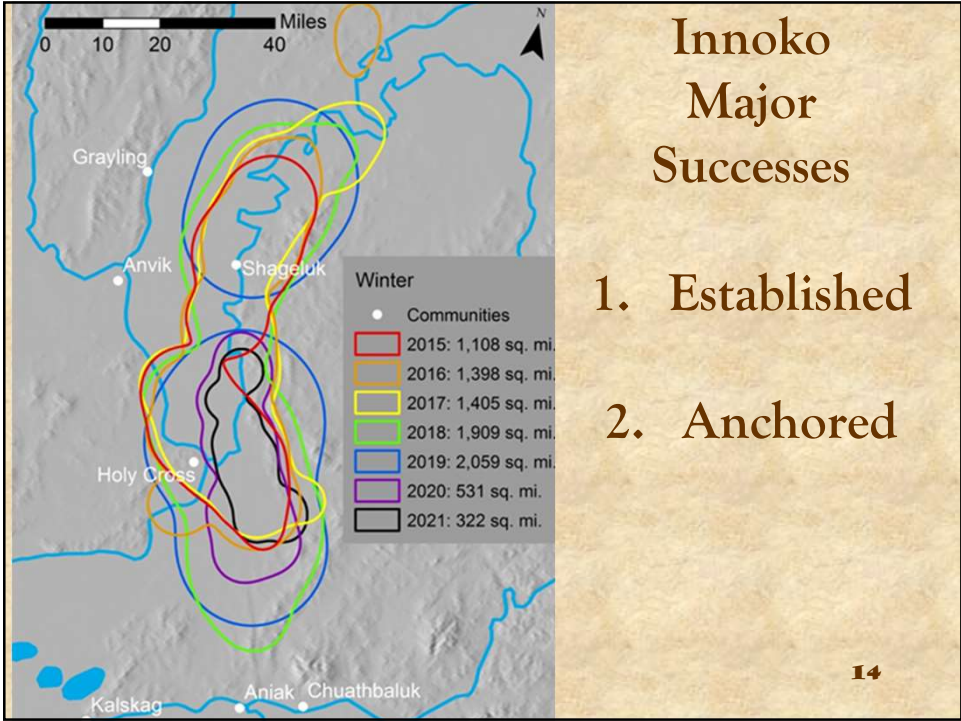
Existing Herds and Focus Areas



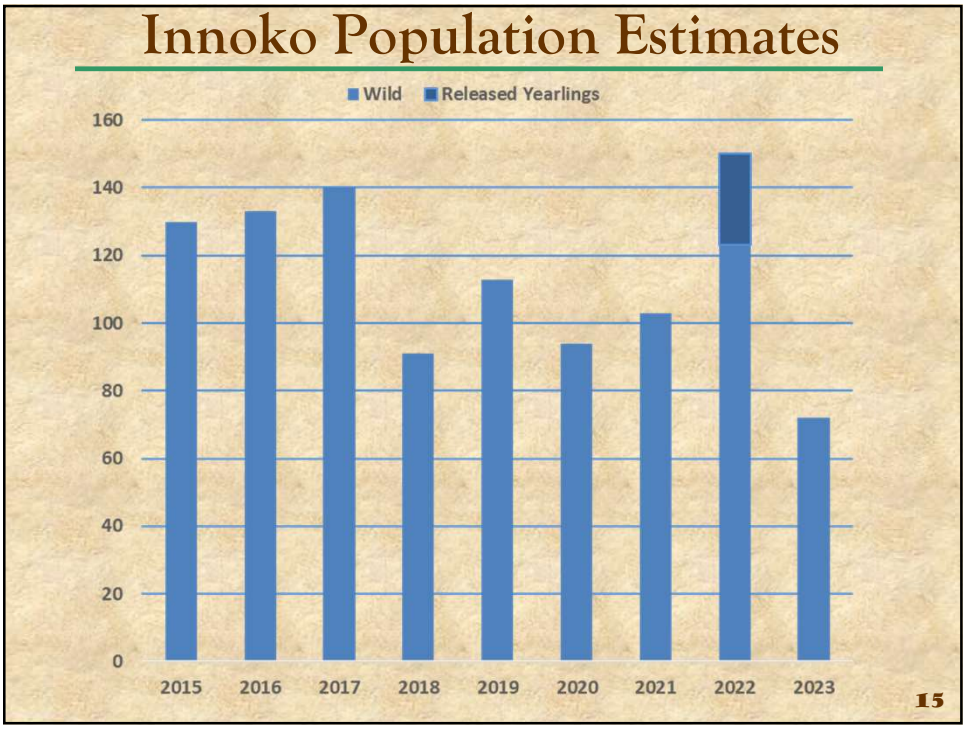
12



13




14



15

Innoko Update

- Highly variable growth due to highly variable snow that exceeds bison limits.
- Not growing like hoped
- New 10-year Management Plan
 - Proposals to be submitted at next cycle.

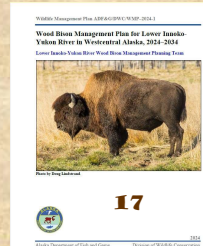


16

16

Innoko Management Plan Goals

1. Grow the herd
2. Staff and fund the project
3. Minimize conflicts between humans and bison
4. Ensure reasonable land use to access bison
5. **Manage harvest equitably**
6. Minimize impact of bison on other species
7. Ensure continuing communication among groups
8. Support other reintroduction efforts.



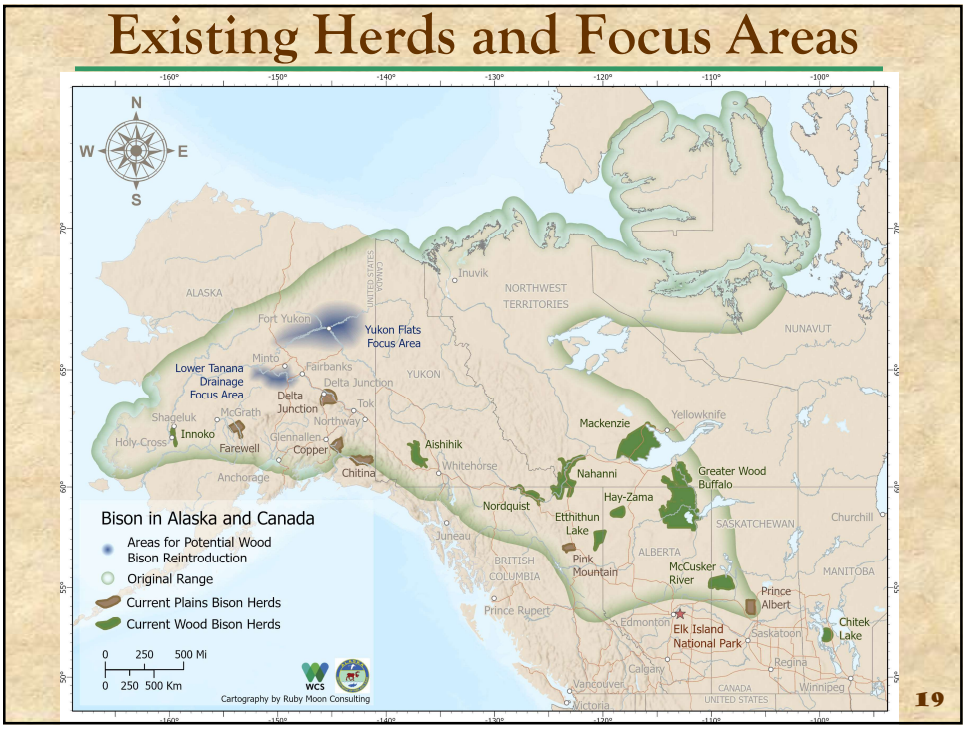
17

Goal 5 of Innoko Management Plan

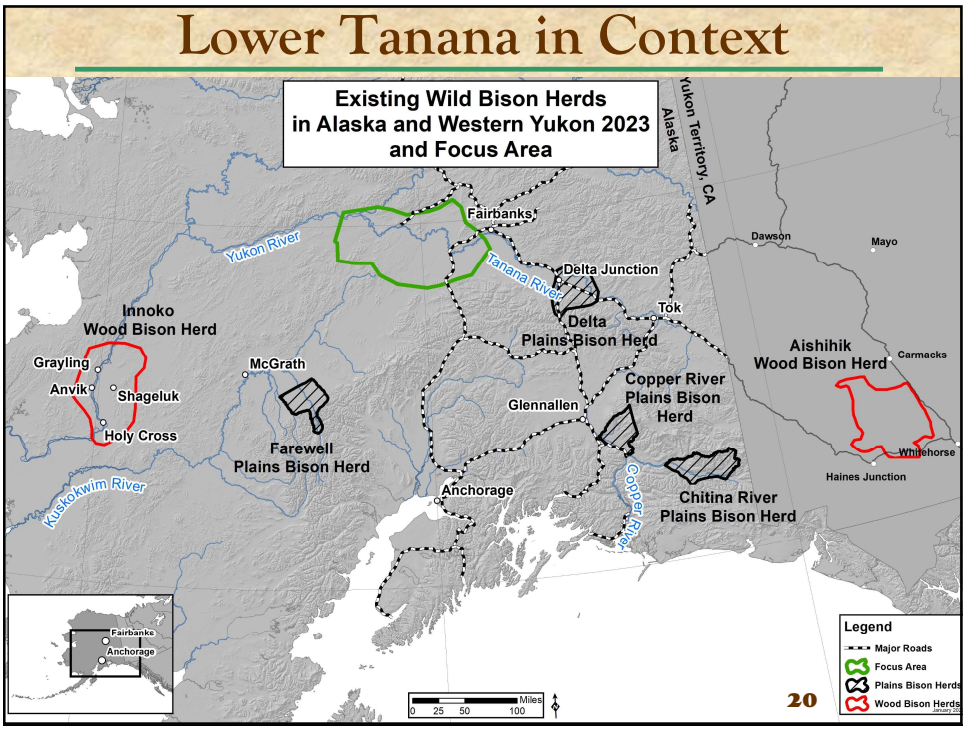
- Harvestable Surplus determined by the Department
 - At least 100 adults
 - Herd can sustain a harvest of 8 bulls and still have a bull:cow ratio of >60:100
- Hunt starts with 4 locally issued registration permits and 4 drawing permits.
- If number of permits increases over the years, drawing permits increase to a target ratio of 80% drawing, 20% locally issued registration.
- Season dates Sept 26 to February 14
- 25% of draw permits could go to nonresidents
- Hunter orientation requirement

18

18




19




20

Imported Bison Going To LARS

UNIVERSITY OF ALASKA FAIRBANKS




Large Animal Research Station

21

21

Lower Tanana Implementation Plan

Wildlife Special Publication ADF&G/DWC/WSP-XXXX-XX

DRAFT Wood Bison Implementation Plan for the Lower Tanana River Drainage, 2024.

C. Tom Seaton and Luke R. Rogers with input from The Lower Tanana Wood Bison Planning Team.





Alaska Department of Fish and Game Division of Wildlife Conservation 2024

22

22

Implementation Plan Highlights

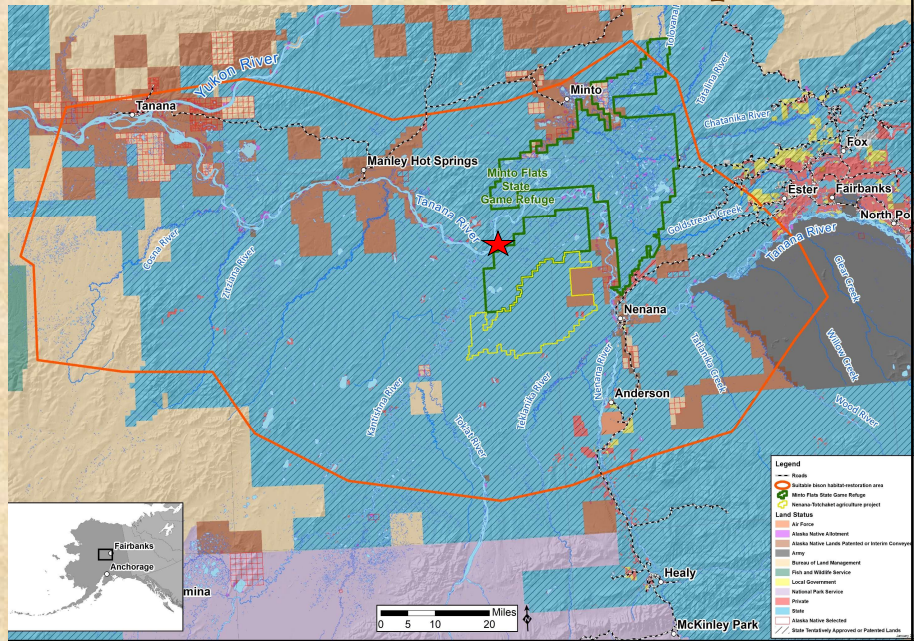
- Goals
- Background (10(j) and EA)
- Process
- Implementation vs Management Plan
- Release area and potential future habitat
- Values and Concerns for future generations



23

23

Release Site and Landscape

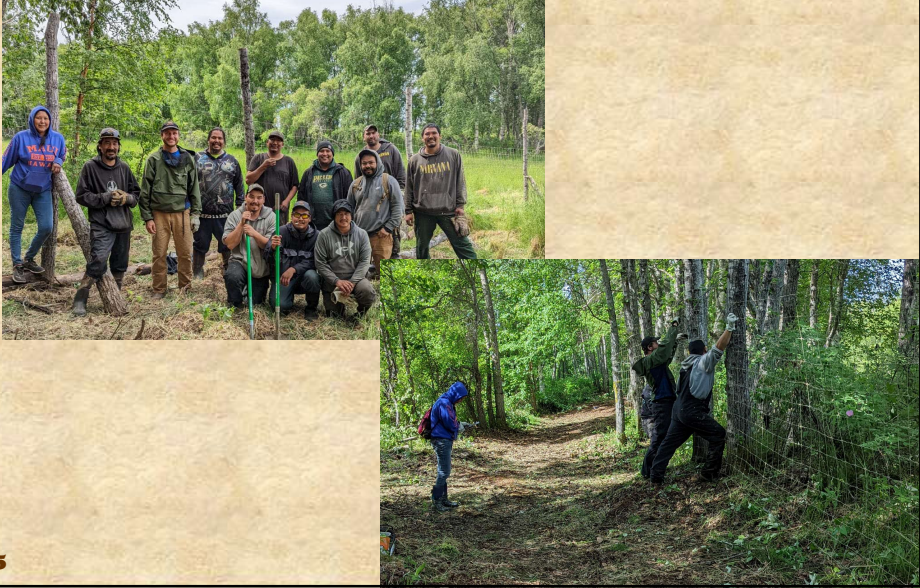


24

24

Enclosure Building

- Innoko in 2022



25

25

Transport of Bison



26

26

Holding, feed, water, monitoring



27

27

END



(Actually beginning)

28

28