

## Proposal 42

Extend the Unit 1A Sitka black-tailed deer hunting  
season

Proposed by *Public*

### Recommendations

Department **SUPPORT**

East POW AC **SUPPORT** (12:2:0)

Ketchikan AC **OPPOSED** (1:7:1)

1



1

## Background

- Proposal seeks to increase the Unit 1A deer season by a month

—Current season: August 1 – November 30

—Proposed season: *August 1 – December 31*

2

Proposal 42



2

## Background

- Season length has changed between 4 and 5 months since statehood.
- Season has been August 1 – November 30 since 2011

3

Proposal 42



3

## Discussion

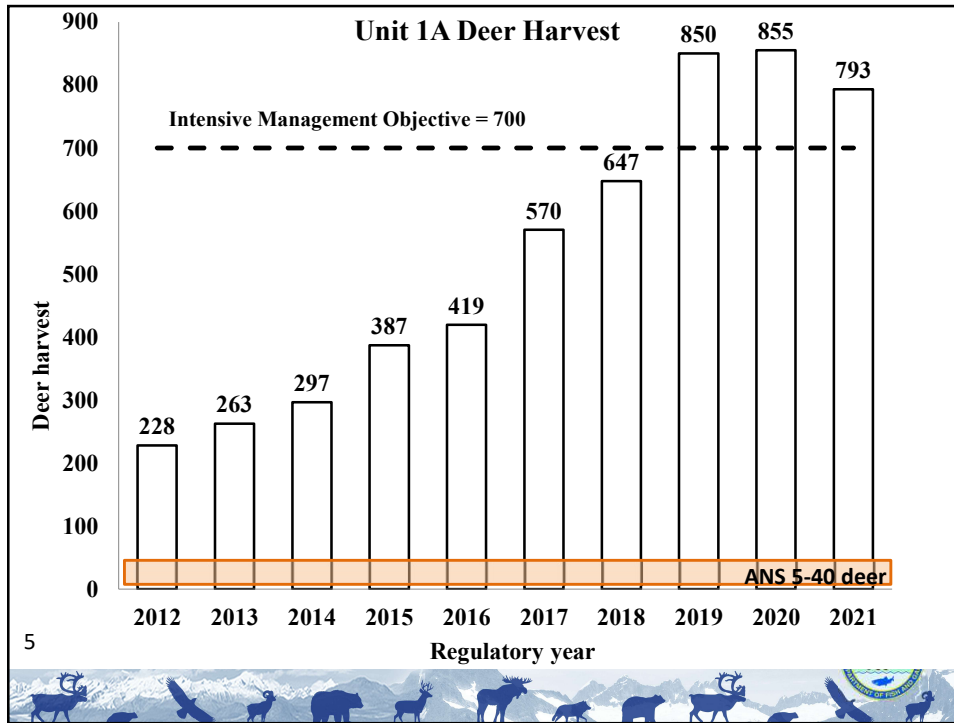
- Series of harsh winters in late 1990s reduced deer population
- Deer harvest is currently at 25 year high
- Currently exceeding harvest objective of 700 deer
- Federally qualified users can hunt month of December

4

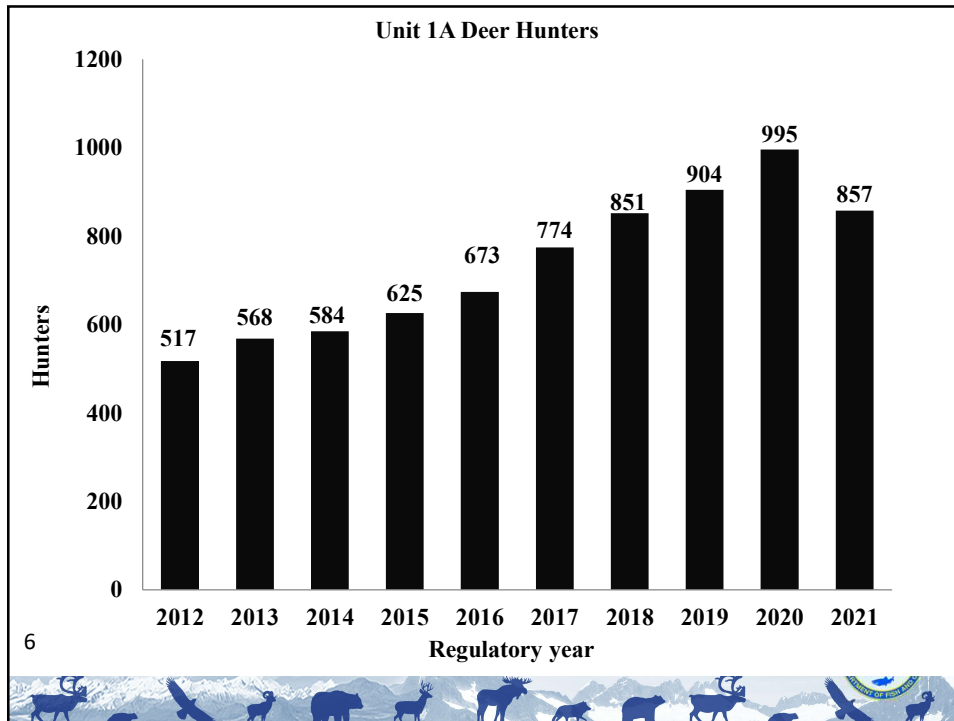
Proposal 42



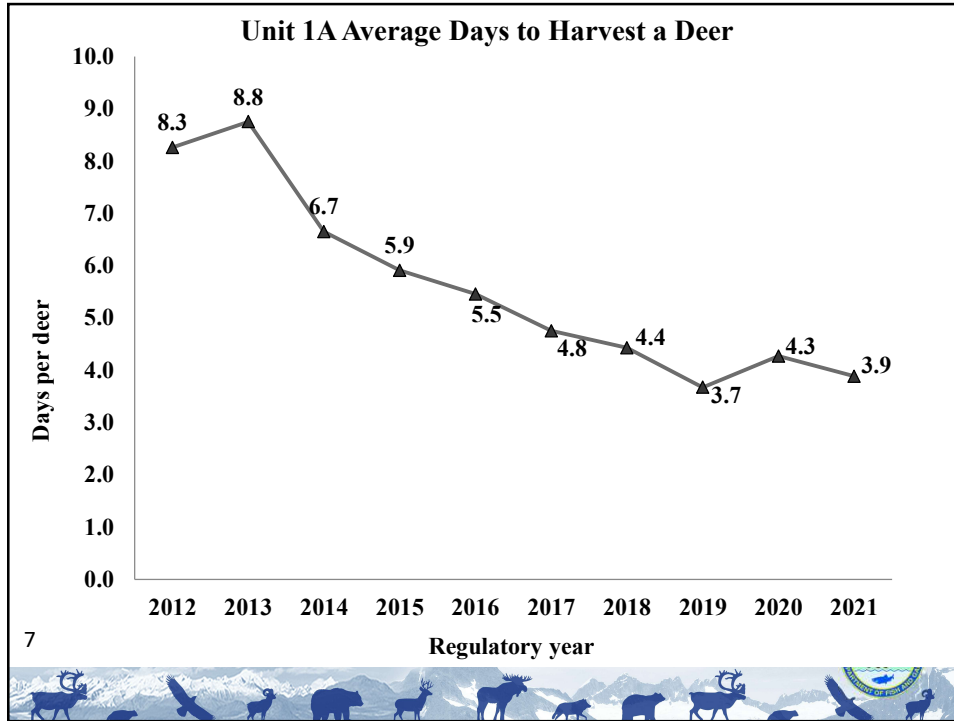
4



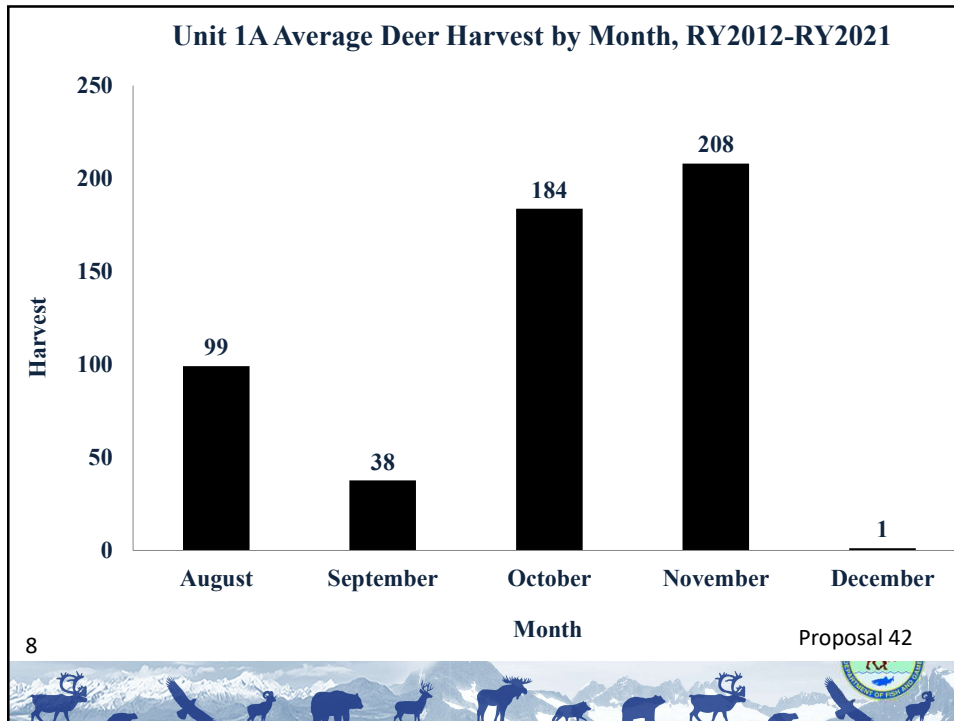
5



6



7



8

Proposal 42

8

## Discussion

- Average December harvest from 1997 – 2010  
–Unit 1A = 12 deer (range 0-43)
- Currently buck only hunt
- Bucks start to lose antlers in December

9

Proposal 42



9

## Proposal 42

Extend the Unit 1A Sitka black-tailed deer hunting season

Proposed by *Public*

### Recommendations

Department **SUPPORT**

East POW AC **SUPPORT** (12:2:0)

Ketchikan AC **OPPOSED** (1:7:1)

10



10

## Proposal 44

Extend the Unit 1A mountain goat hunting season

Proposed by *Ketchikan AC*

### Recommendations

Department **OPPOSED**

East POW AC **TNA**

Ketchikan AC **SUPPORT** (5:3:1)

11



11

## Background

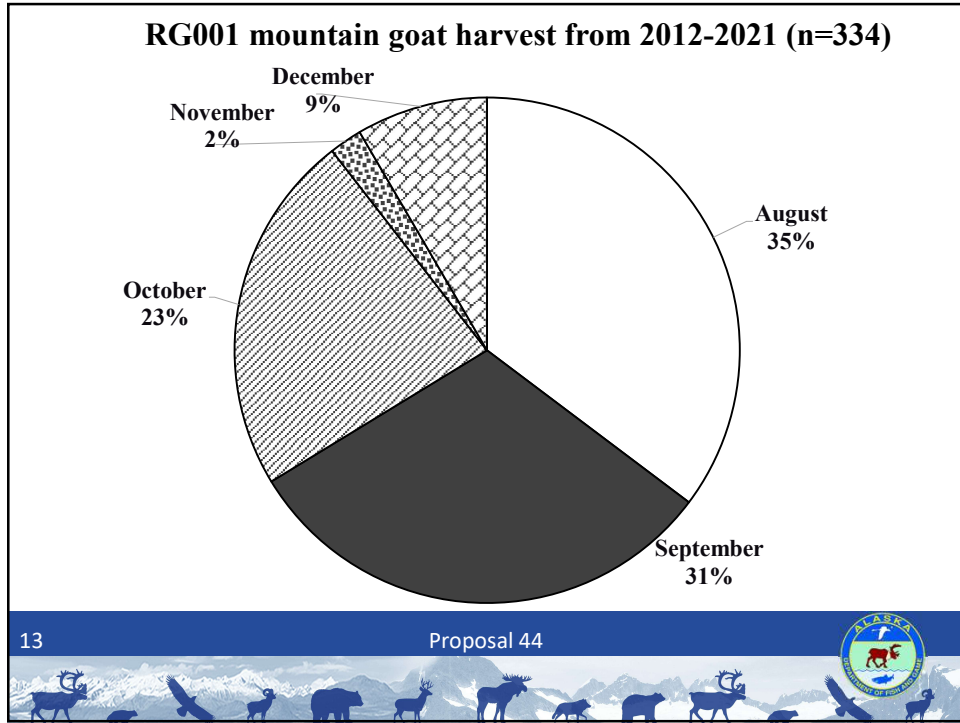
- Proposal would lengthen the Unit 1A registration goat season by a month
- Current season: August 1 – December 31
- Proposed season: *August 1 – January 31*

12

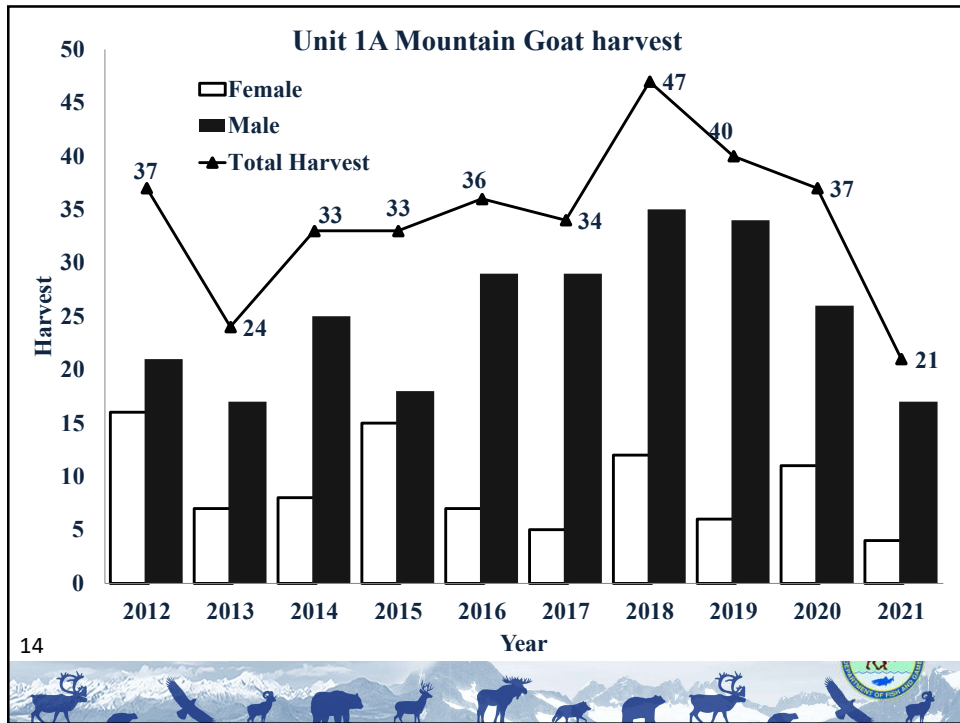
Proposal 44



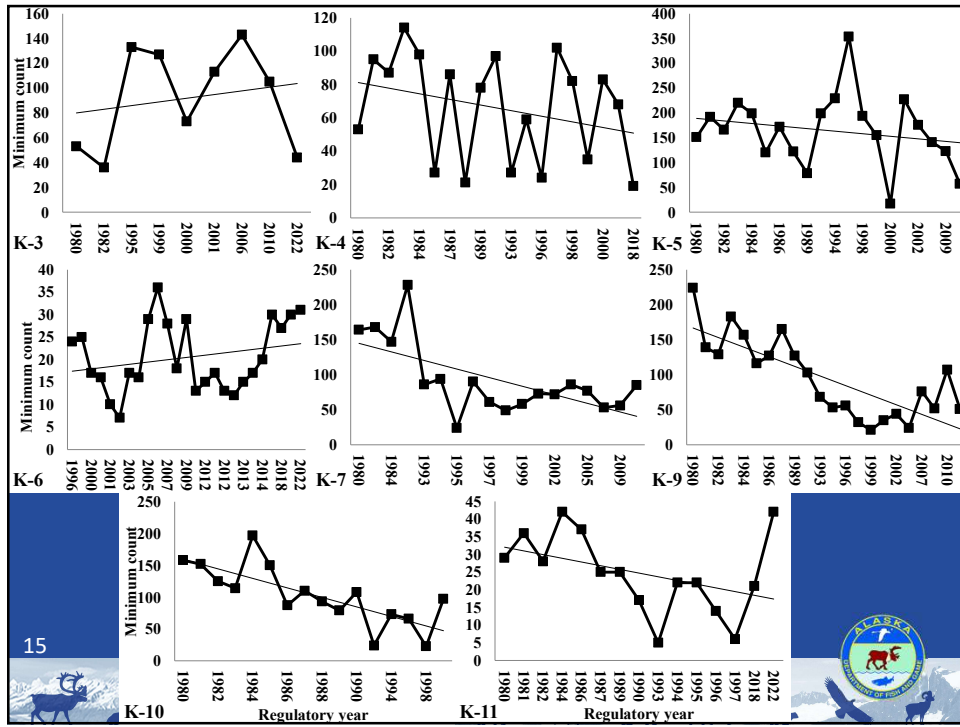
12



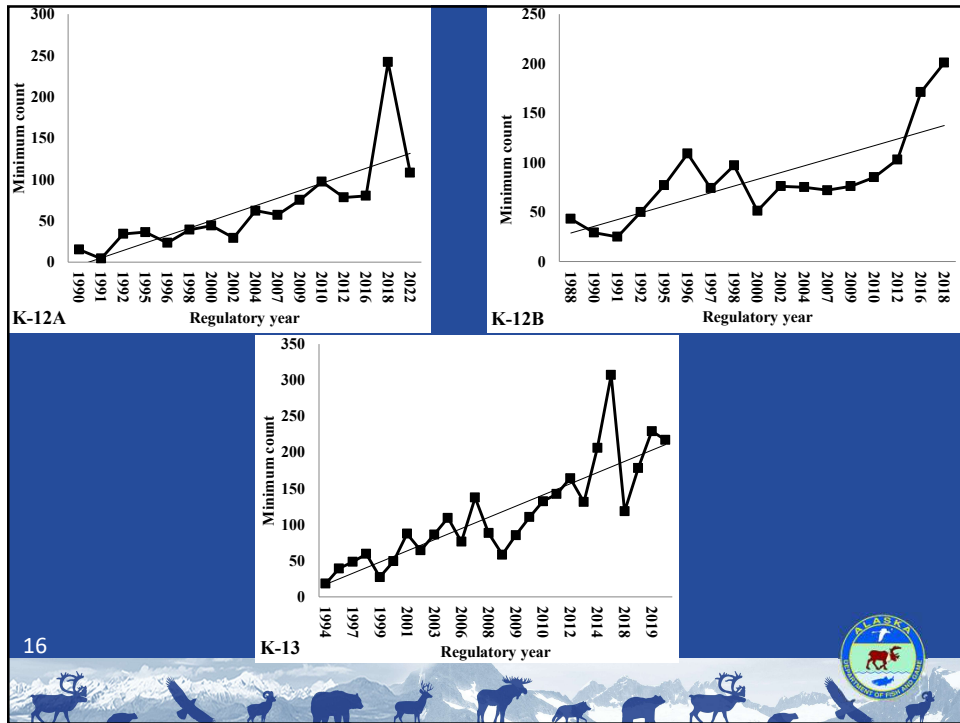
13



14

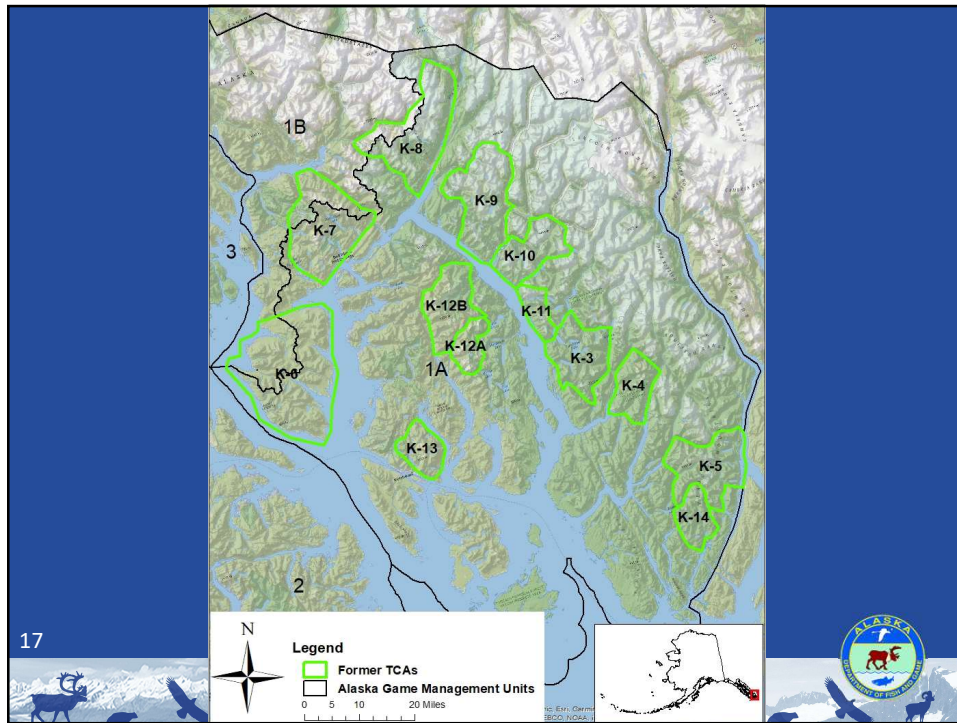


15



16





17

## Discussion

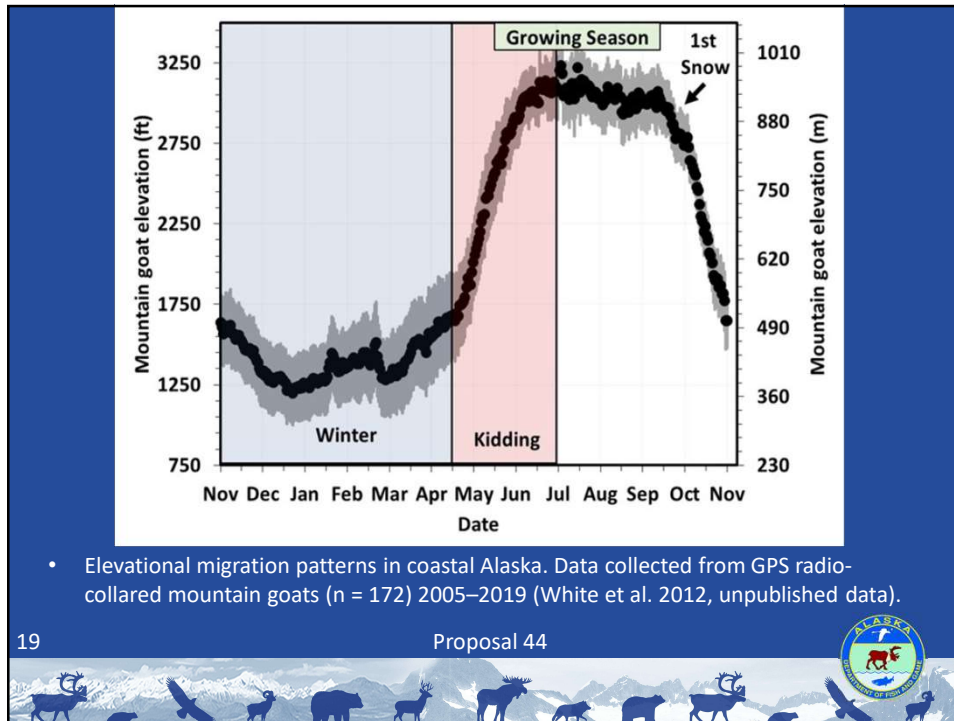
- It's suggested by the Northern Wild Sheep and Goat Council that mountain goats should not be disturbed on their winter grounds between November 1-April 30
- Mountain goats use the same small wintering grounds annually
- Disturbance or displacement from wintering grounds can reduce survival

18

Proposal 44



18



19

## Discussion

- Only locations in North America with mountain goat seasons that extend into January:
  - Alaska Unit 6 and 8
  - British Columbia small subsection of Management Unit 6-14 near Stewart, BC
- If adopted, January harvest in Unit 1A could be 2-3 goats per year depending on hunter interest

20 Proposal 44

20

## Proposal 44

Extend the Unit 1A mountain goat hunting season

Proposed by *Ketchikan AC*

### Recommendations

Department **OPPOSED**

East POW AC **TNA**

Ketchikan AC **SUPPORT** (5:3:1)

21



21

## Proposal 43

Increase the resident Unit 1A mountain goat bag limit  
for RG001 to 2 goats

Proposed by *KETCHIKAN AC*

### Recommendations

Department **NEUTRAL**

East POW AC **TNA**

Ketchikan AC **SUPPORT** (8:0:0)

22



22

## Background

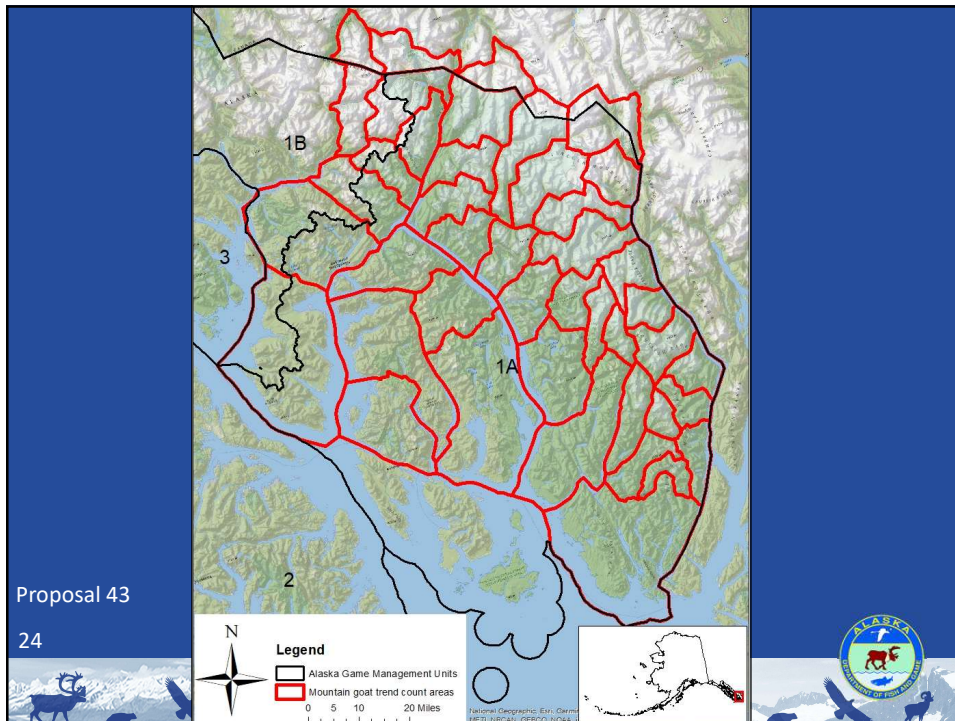
- Allow for the harvest of two mountain goats in GMU 1A by Alaska residents with restrictions:
  1. The first mountain goat harvested must be a billy
  2. The first goat must be reported and sealed with ADFG before a second permit is issued
  3. The second mountain goat cannot be harvested in same trend count area as first goat if the first goat was harvested in Unit 1A

23

Proposal 43



23



Proposal 43

24

24

## Background

- 2 mountain goat bag limit from statehood to 2002
- Removed in 2002 due to population declines

25

Proposal 43



25

## Background

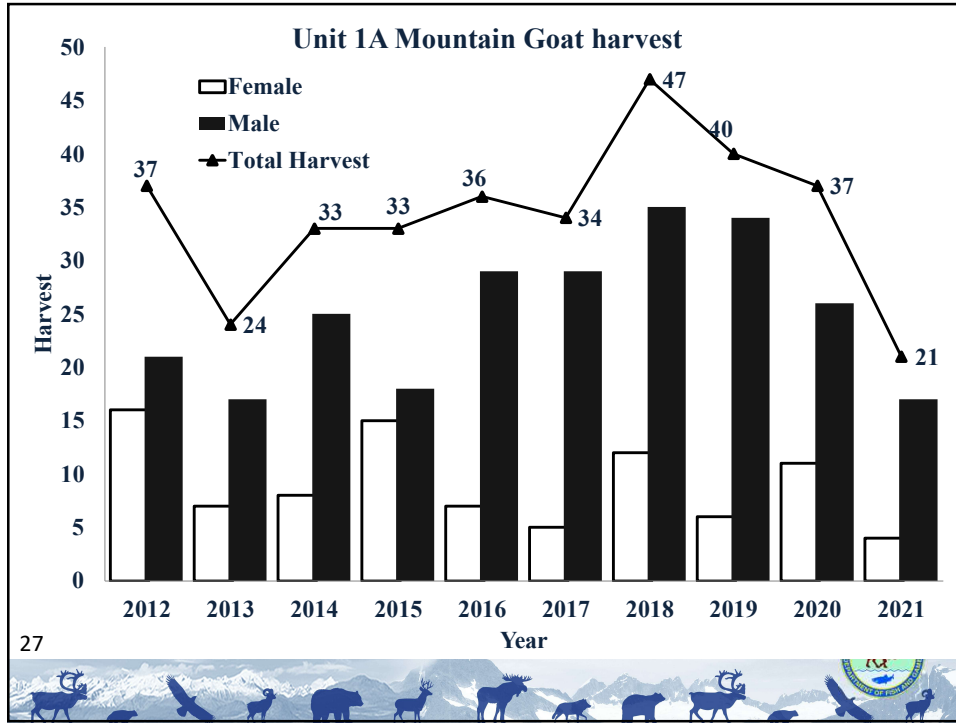
- Introduced Population on Revillagigedo Island healthy
- 77% of mountain goat harvest comes from Revillagigedo Island (2012-2021)

26

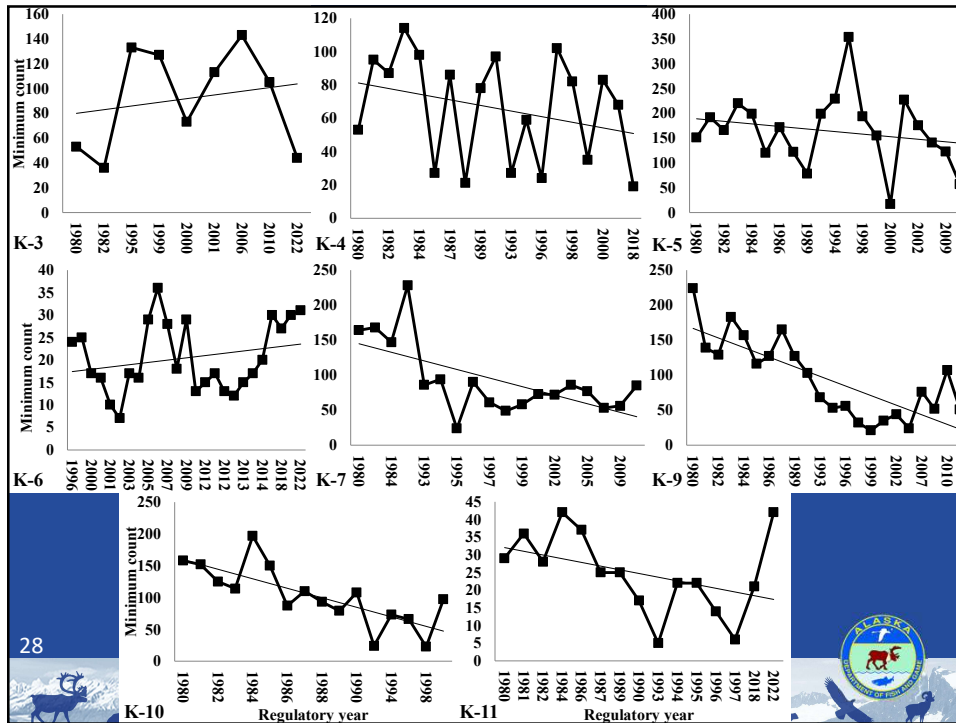
Proposal 43



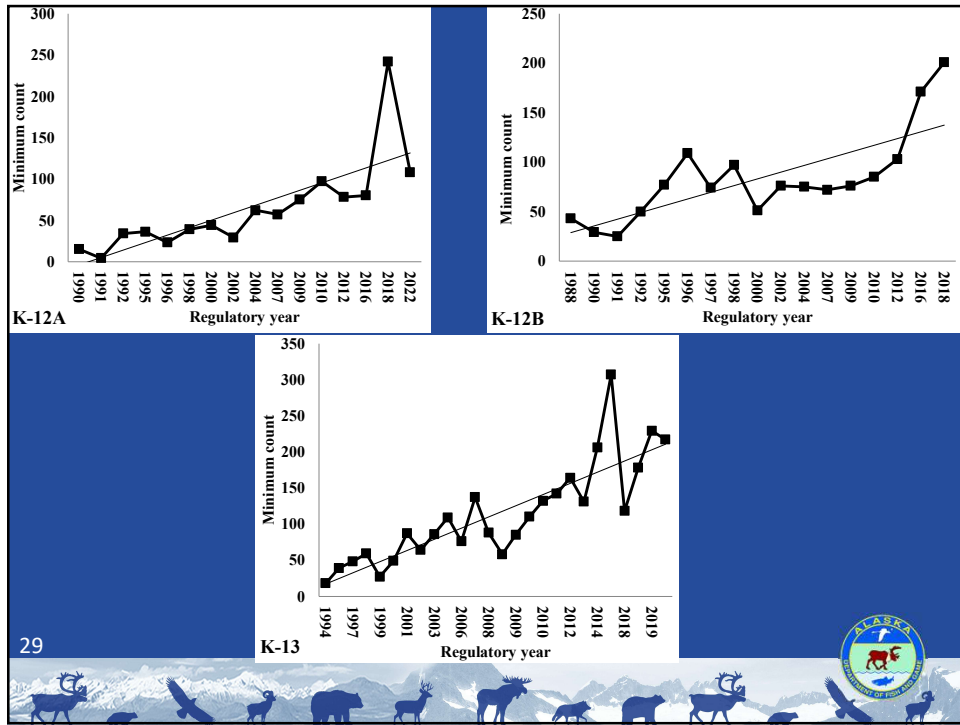
26



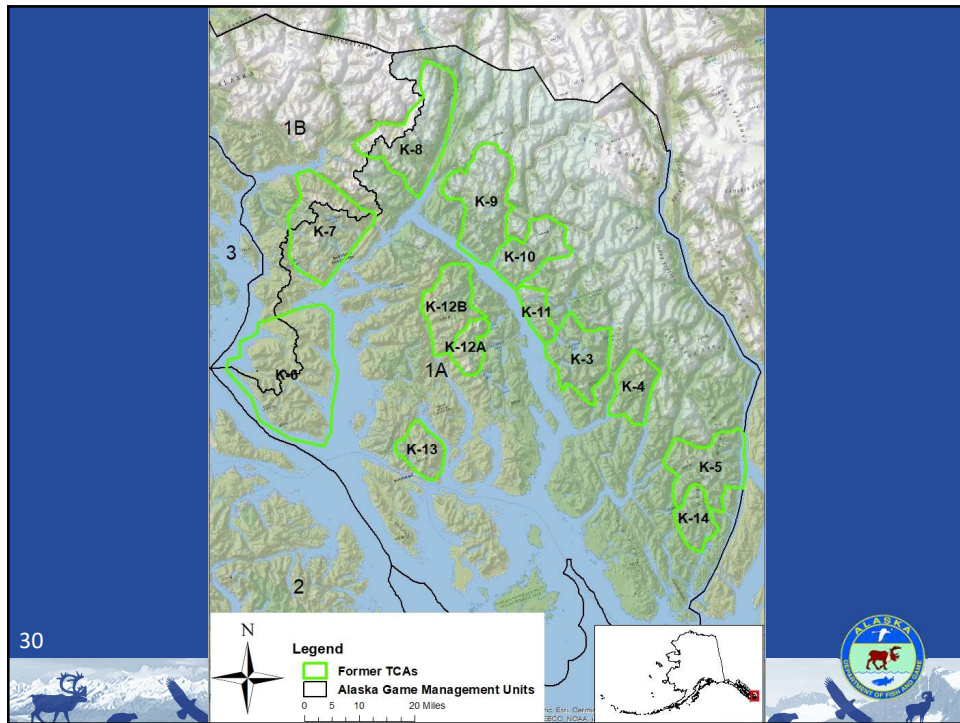
27



28



29



30

## Considerations

- Increased regulatory complexity for hunters, ADFG, and BOG
- Difficult for hunt administrators and law enforcement to manage and enforce
- Hunt available to all Alaska residents

31

Proposal 43



31

## Considerations

- Decrease opportunity overall
- Guides could have additional opportunity
- Unit 1A hunters treated differently than other residents

32

Proposal 43



32



## Proposal 43

Increase the resident Unit 1A mountain goat bag limit  
for RG001 to 2 goats

Proposed by *KETCHIKAN AC*

### Recommendations

Department **NEUTRAL**

East POW AC **TNA**

Ketchikan AC **SUPPORT** (8:0:0)

33



33

## Proposal 45

Raise the population objective for Unit 2 wolves and  
establish a minimum population number for harvest

Proposed by *Alaska Wildlife Alliance*

### Recommendations

Department **NEUTRAL/OPPOSED**

Craig AC **OPPOSED** (0:8:0)

East POW AC **OPPOSED** (0:13:1)

Ketchikan AC **OPPOSED** (0:9:0)

Klawock AC **OPPOSED** (1:8:0)

34



34

## Effect of Proposal

- Raise the population objective for Unit 2 wolves from 150–200 to 250–350 and close the season if the population falls below 200 wolves.

35

Proposal 45



35

## Background

- Unit 2 Wolf management 1997-2018: harvest quota
- Wolf management implemented in 2019 to present: population objective





36


Proposal 45



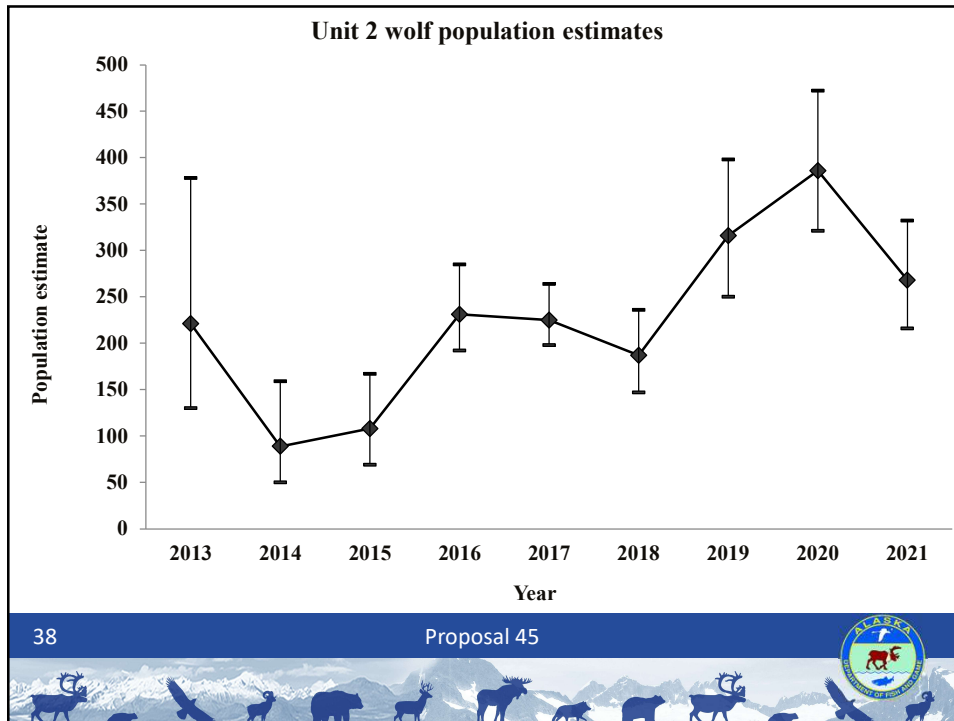
36

## Background

Harvest Management	Estimated Population
<p><b>Zone 4: Pop &gt; Objective</b> Up to 4-month season.</p>	 200
<p><b>Zone 3: Pop = Objective</b> Up to 2-month season</p>	 150
<p><b>Zone 2: Pop &lt; Objective</b> Up to 6-week season.</p>	 100
<p><b>Zone 1: &lt;100 wolves</b> Season closed until population increases to &gt; 100 wolves.</p>	 0

37
Proposal 45


37



38

## Discussion

- Current population objective 150-200 based on estimates from 2013-2017
- Estimate biased low, harvest management has been conservative
- Unit 2 wolves are isolated and closely related
  - About one wolf enters the breeding population in Unit 2 each wolf generation (about 4-5 years)

39

Proposal 45



39

## Discussion

- Higher population objective likely warranted
- Quantitative information not available to make specific recommendation (2-3 years needed)

40

Proposal 45



40

## Summary

- ADFG **neutral** on changing population objective
  - Additional analyses needed to aid in recommendation for the population objective
- ADFG **opposed** to establishing minimum population number for harvest
  - Population estimate currently biased low = conservative harvest management
  - Establishing minimum number would unnecessarily restrict harvest opportunity
  - Flexibility for adaptive management strategy key

41

Proposal 45



41

## Proposal 45

Raise the population objective for Unit 2 wolves and establish a minimum population number for harvest

Proposed by **Alaska Wildlife Alliance**

### Recommendations

Department **NEUTRAL/OPPOSED**

Craig AC **OPPOSED** (0:8:0)

East POW AC **OPPOSED** (0:13:1)

Ketchikan AC **OPPOSED** (0:9:0)

Klawock AC **OPPOSED** (1:8:0)

42



42

## Proposal 46

Lengthen the hunting season for wolves in  
Unit 2 to open Sep 1

Proposed by *Ketchikan AC*

### Recommendations

Department **NEUTRAL**

Ketchikan AC **SUPPORTS** (8:0) • Klawock AC **SUPPORTS** (9:0) • Craig AC **SUPPORTS** (8:0)

East POW **OPPOSES** (0:14:0)

43

43



43

## Background

- This proposal would align state and federal wolf hunting seasons
- Current wolf hunting seasons:
  - State: Dec. 1 – Mar. 31
  - Federal: Sep. 1 – Mar. 31

44

Proposal 46

44



44

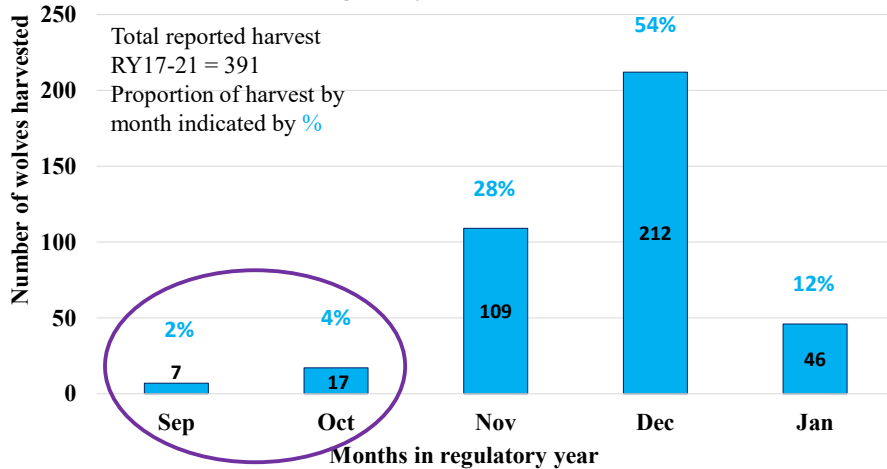
## Wolf Harvest Discussion

- From RY17-RY21,
  - 6% were harvested in Sep and Oct
  - 89% were harvested by federally qualified hunters



45

Unit 2 Cumulative Reported Wolf Harvest by Month, Regulatory Years 2017-2021



46

## Considerations

- Unlikely to significantly increase wolf harvest
- Simplifies regulations by aligning seasons
- Provides opportunity for other user groups
- Could decrease trapping opportunity

47

Proposal 46



4

47

## Proposal 46

Lengthen the hunting season for wolves in  
Unit 2 to open Sep 1

Proposed by *Ketchikan AC*

### Recommendations

Department **NEUTRAL**

Ketchikan AC **SUPPORTS** (8:0) • Klawock AC **SUPPORTS** (9:0) • Craig AC **SUPPORTS** (8:0)

East POW **OPPOSES** (0:14:0)

48



48

48



## Proposal 47

Require wolf harvest information to be reported within 48 hours of recovery and sealing within 14 days in Unit 2

Proposed by *Alaska Wildlife Alliance*

### Recommendations

Department **SUPPORTS**

Craig AC **OPPOSE** (0:8) • Klawock AC **OPPOSE** (0:9)

East POW AC **OPPOSE** (0:14) • Ketchikan AC **OPPOSE** (0:9)

49



49

## Current Regulations

- 2021 BOG Meeting
  - The untanned hides of wolves must be promptly sequentially numbered or marked and the date and location of take for each wolf must be reported in person or by telephone to the department not later than 7 days after take
  - Seal within 15 days of take
- 2022 FSB Meeting\*
  - Sequentially number or mark wolves taken
  - Seal within 15 days of take

50

Proposal 47



50

## Discussion

- In 2021, ADFG requested Unit 2 wolf sealing period to be reduced to 7 days; but why?
  - Estimates rely on genetic IDs of individual wolves
  - Accurate date and location of take benefits estimate
- BOG adopted proposal with amendments
  - Difficult for trappers who are remote, weather considerations
  - Compromised by adopting 7-day reporting period and 15-day sealing period

51



51

## Considerations

- If proposal is adopted, it will provide harvest information sooner than current regulations require
- May be burdensome to trappers who are remote
- Proposed change ineffective without similar changes to federal subsistence regulations adopted by the FSB

52

Proposal 47



52

## Proposal 47

Require wolf harvest information to be reported  
within 48 hours of recovery and sealing within 14  
days in Unit 2

Proposed by *Alaska Wildlife Alliance*

### Recommendations

Department **SUPPORTS**

Craig AC **OPPOSE** (0:8) • Klawock AC **OPPOSE** (0:9)

East POW AC **OPPOSE** (0:14) • Ketchikan AC **OPPOSE** (0:9)

53



53

## Proposal 48

Base population objective for Unit 2 wolves on  
population viability analysis

Proposed by *Alaska Wildlife Alliance*

### Recommendations

Department **OPPOSED**

Craig AC **OPPOSED** (0:8:0)

East POW AC **OPPOSED** (0:14:0)

Ketchikan AC **OPPOSED** (0:9:0)

Klawock AC **OPPOSED** (0:9:0)

54



54

## Effect of Proposal

- Base the population objective for Unit 2 wolves on a biological population viability analysis using available demographic data
- ADF&G must contract a biologist to conduct a population viability analysis using available demographic data

55

Proposal 48



55

## Background

- Unit 2 Wolf management 1997-2018: harvest quota
- Wolf management implemented in 2019 to present: population objective

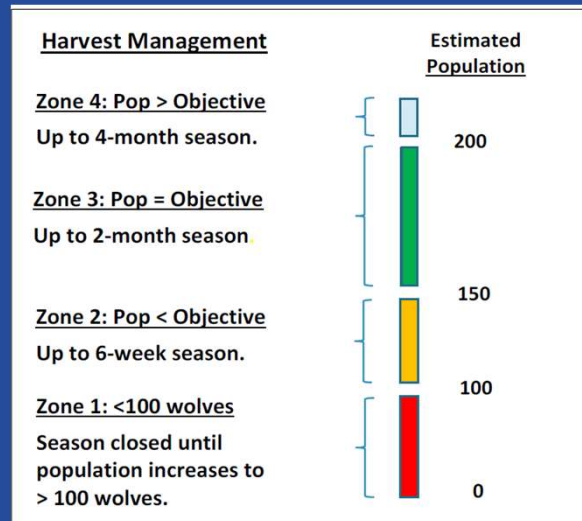
56

Proposal 48



56

## Background



57

Proposal 48



57

## Discussion

- Population estimate may be biased low in some years
- Population objective based on low estimates
- Unit 2 wolf population isolated and closely related

58

Proposal 48



58

## Discussion

- Department further investigating genetic status of Unit 2 wolves
- Department will likely conduct population viability analysis (PVA) internally

59

Proposal 48



59

## Considerations

- PVA using data and assumptions relevant to the GMU 2 wolf population is a tool to inform a new population objective range.
- Modeling exercises like PVAs include estimates of error. Range of outcomes should be evaluated with other relevant management information when considering a new population objective for GMU 2 wolves.

60

Proposal 48



60

## Proposal 48

Base population objective for Unit 2 wolves on  
population viability analysis

Proposed by *Alaska Wildlife Alliance*

### Recommendations

Department **OPPOSED**

Craig AC **OPPOSED** (0:8:0)

East POW AC **OPPOSED** (0:14:0)

Ketchikan AC **OPPOSED** (0:9:0)

Klawock AC **OPPOSED** (0:9:0)

61



61

## Proposal 49

Use lower confidence interval for harvest  
management of Unit 2 wolves

Proposed by *Alaska Wildlife Alliance*

### Recommendations

Department **OPPOSED**

Craig AC **OPPOSED** (0:8:0)

East POW AC **OPPOSED** (0:14:0)

Ketchikan AC **OPPOSED** (0:9:0)

Klawock AC **OPPOSED** (0:9:0)

62



62

## Effect of Proposal

- The lower confidence interval value of the Unit 2 wolf population estimate would be used to set season length
- ADF&G currently uses the midpoint of the estimate

63

Proposal 49



63

## Discussion

- Department estimate is likely biased low
- Harvest management is conservative

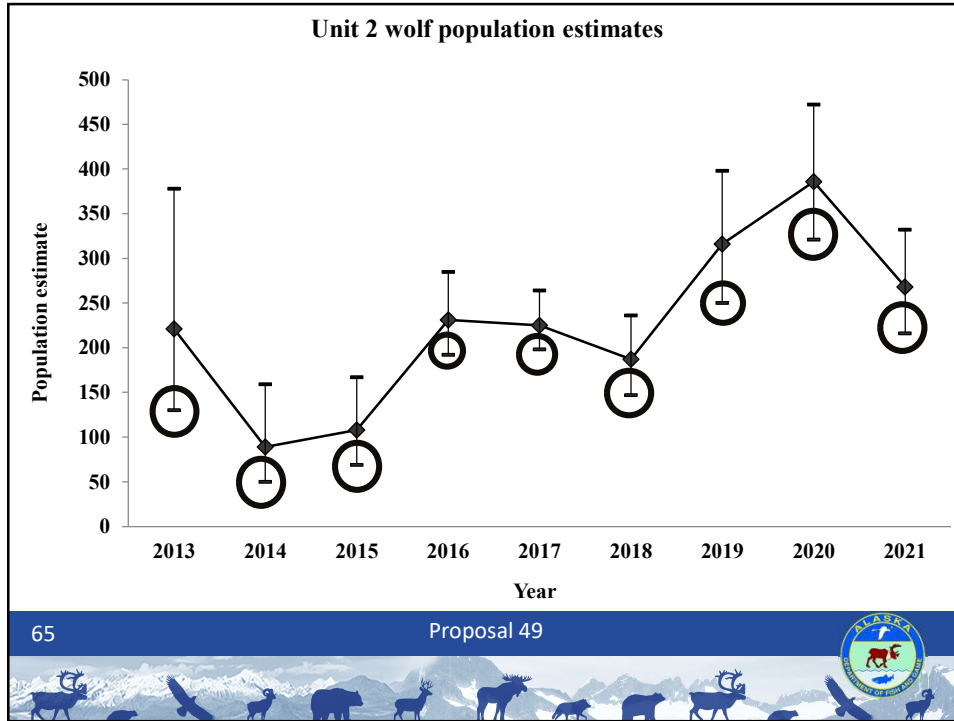
64

Proposal 49



64





65

**Table 1. Fall wolf population estimate and 95% confidence intervals (CIs) during 2013–2021 for Game Management Unit 2.**



Year	Population point estimate	95% CIs
2013	221	130-378
2014	89	50-159
2015	108	69-167
2016	231	192-285
2017	225	198-264
2018	187	147-236
2019	316	250-398
2020	386	321-472
2021	268	216-332

66

## Background

<u>Harvest Management</u>	<u>Estimated Population</u>
<u>Zone 4: Pop &gt; Objective</u> Up to 4-month season.	200
<u>Zone 3: Pop = Objective</u> Up to 2-month season	150
<u>Zone 2: Pop &lt; Objective</u> Up to 6-week season.	100
<u>Zone 1: &lt;100 wolves</u> Season closed until population increases to > 100 wolves.	0

67 Proposal 49



67

## Considerations

- Unnecessarily restricts already conservative harvest
- Unnecessary to maintain sustainable population and provide harvest opportunity

68 Proposal 49



68

## Proposal 49

Use lower confidence interval for harvest  
management of Unit 2 wolves

Proposed by *Alaska Wildlife Alliance*

### Recommendations

Department **OPPOSED**

Craig AC **OPPOSED** (0:8:0)

East POW AC **OPPOSED** (0:14:0)

Ketchikan AC **OPPOSED** (0:9:0)

Klawock AC **OPPOSED** (0:9:0)

69



69

## Proposal 50

Base Unit 2 wolf estimate on Prince of Wales Island  
only

Proposed by *Alaska Wildlife Alliance*

### Recommendations

Department **OPPOSED**

Craig AC **OPPOSED** (0:8:0)

East POW AC **OPPOSED** (0:14:0)

Ketchikan AC **OPPOSED** (0:9:0)

Klawock AC **OPPOSED** (0:9:0)

70



70

## Effect of Proposal

- The fall population estimate of wolves in Unit 2 would be based on the estimated population of wolves on Prince of Wales Island (POW) alone, with no extrapolation of the population estimate for the outer islands in Unit 2

71

Proposal 50



71

## Background

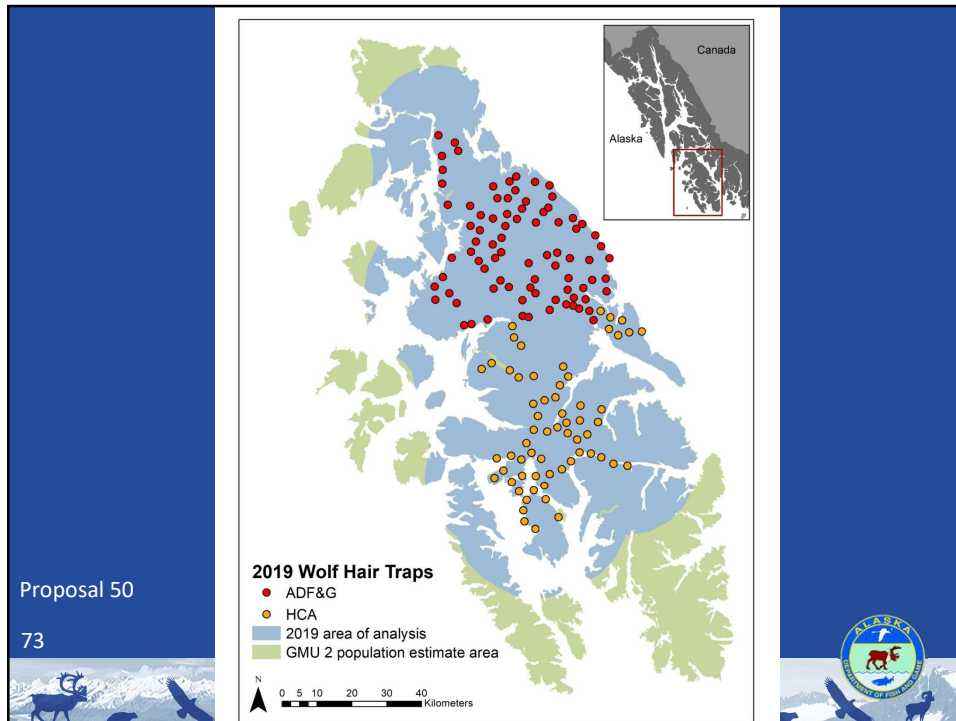
- ADF&G estimates density of wolves in a large study area, 80% of POW and 60% of Unit 2
  - Effective sampling area includes some outer islands.
  - Hair boards on some outer islands
  - Wolves harvested on outer islands used in estimate
- Density in the study area assumed to reflect density across Unit 2

72

Proposal 50



72



73

## Discussion

- Wolves in southeast Alaska documented to live on small islands at very high densities (ex. Pleasant Island)
- Wolves prey switch when ungulates are not available

74

Proposal 50



74

## Discussion

- POW is about 60% of GMU 2, so proposal would reduce population estimate/harvest opportunity by up to 40%.
- Unnecessarily restricts wolf harvest opportunity
- Current management strategy maintains a sustainably harvestable population

75

Proposal 50



75

## Proposal 50

Base Unit 2 wolf estimate on Prince of Wales Island  
only

Proposed by *Alaska Wildlife Alliance*

### Recommendations

Department **OPPOSED**

Craig AC **OPPOSED** (0:8:0)

East POW AC **OPPOSED** (0:14:0)

Ketchikan AC **OPPOSED** (0:9:0)

Klawock AC **OPPOSED** (0:9:0)

76



76

## Proposal 51

Establish a harvestable percentage of the Unit 2 wolf population annually, require in-season reporting, and close season by emergency order

Proposed by *Alaska Wildlife Alliance*

### Recommendations

Department **OPPOSED**

Craig AC **OPPOSED** (0:8:0)

East POW AC **OPPOSED** (0:14:0)

Ketchikan AC **OPPOSED** (0:9:0)

Klawock AC **OPPOSED** (0:9:0)

77



77

## Effect of Proposal

- BOG would establish a percentage of the Unit 2 wolf population to be harvested annually
- Require in-season reporting
- Department must provide public harvest data in real time
- The department would close the seasons by EO with 3 days notice, and 3 additional days if weather is inclement

78

Proposal 51



78

## Background

- Unit 2 Wolf management 1997-2018: harvest quota
- Wolf management implemented in 2019 to present: population objective

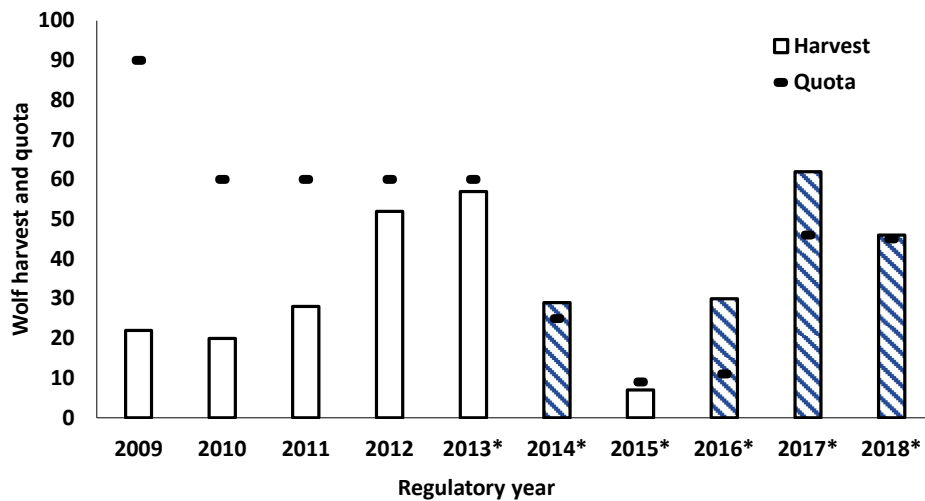
79

Proposal 51



79

Unit 2 Wolf Harvest and Quota



\*Season closed by emergency order  
 Stripes denotes years when harvest exceeded quota

80

Proposal 51



80



## Background

- 2021 BOG Meeting
  - Sequentially number or mark harvested wolves
  - Report wolf harvest within 7 days of take to Ketchikan office
  - Seal within 15 days of take
- 2022 FSB Meeting
  - Sequentially number or mark wolves harvested
  - Seal within 15 days of take

81

Proposal 51



81

## Discussion

- Season-length based management:
  - Predictable season length
  - Flexible harvest management
  - Predict range of harvest based on previous harvest rates
- Quota based management:
  - Less flexible for management
  - Harvest cap exceeded in past
  - Trappers may be forced to pull gear in inclement weather
  - Ineffective unless FSB adopts similar changes to federal subsistence regulations

82

Proposal 51



82

## Proposal 51

Establish a harvestable percentage of the Unit 2 wolf population annually, require in season reporting, and close season by emergency order

Proposed by *Alaska Wildlife Alliance*

### Recommendations

Department **OPPOSED**

Craig AC **OPPOSED** (0:8:0)

East POW AC **OPPOSED** (0:14:0)

Ketchikan AC **OPPOSED** (0:9:0)

Klawock AC **OPPOSED** (0:9:0)

83



83

## Proposal 52

Establish a harvest quota for wolves, between 20% and 35% of the estimated wolf population in Unit 2

Proposed by *Alaska Wildlife Alliance*

### Recommendations

Department **OPPOSES**

Craig AC **OPPOSES** (0:8) • Klawock AC **OPPOSES** (0:9)

East POW AC **OPPOSES** (0:14) • Ketchikan AC **OPPOSES** (0:9)

84



84

## Discussion

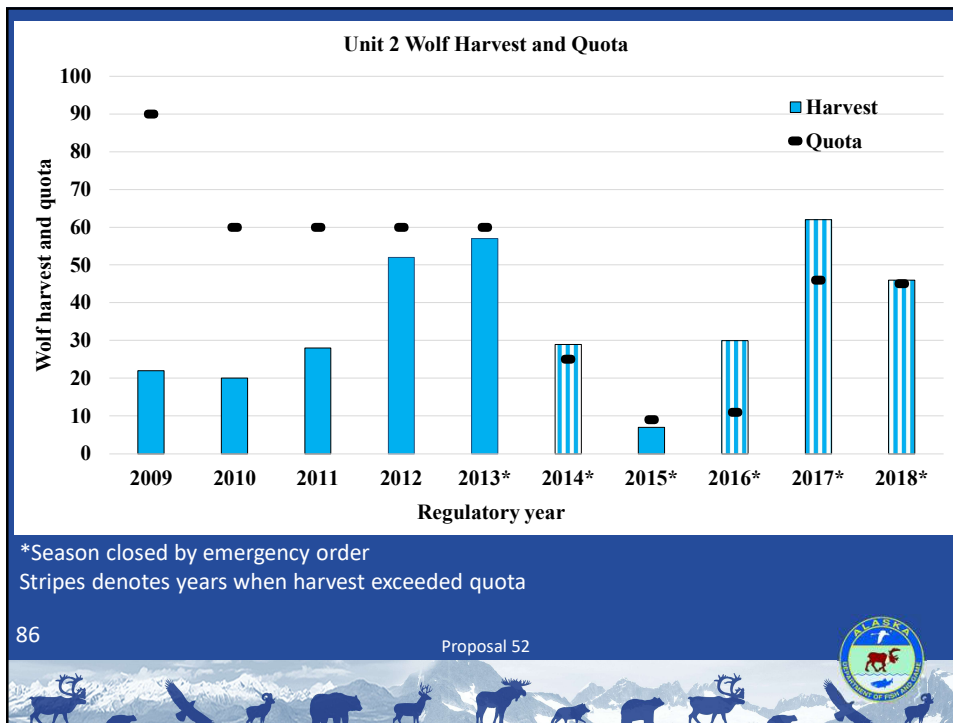
- ADFG used a harvest guideline level (HGL) from regulatory years 1997-2018
  - Shortcomings
    - Closures on short notice burdensome to trappers
    - Provides no goal for population size
    - Difficulty monitoring harvest to meet quota with 15-day sealing
- In 2019, BOG created wolf population objective of 150-200 wolves

85

Proposal 52



85



86

Proposal 52



86

## Considerations

- Trappers may have longer season in years when trapping conditions are poor
- Less flexible for management, changes require Board action
- Quota based on population estimates do not recognize error associated with estimates
- Trappers may be forced to pull gear on short notice in inclement weather
- Ineffective without similar changes to federal subsistence regulations adopted by the FSB

87

Proposal 52



87

## Proposal 52

Establish a harvest quota for wolves, between 20% and 35% of the estimated wolf population in Unit 2

Proposed by *Alaska Wildlife Alliance*

### Recommendations

Department **OPPOSES**

Craig AC **OPPOSES** (0:8) • Klawock AC **OPPOSES** (0:9)

East POW AC **OPPOSES** (0:14) • Ketchikan AC **OPPOSES** (0:9)

88



88

## Proposal 53

Establish an estimated unreported mortality rate of 35-50% to be used in establishing an annual harvest quota

Proposed by *Alaska Wildlife Alliance*

### Recommendations

Department **OPPOSES**

Craig AC **OPPOSES** (0-8) • Klawock AC **OPPOSES** (0-9)

East POW AC **OPPOSES** (0:14) • Ketchikan AC **OPPOSES** (0-9)

89



89

## Effect

- Proposal would require ADF&G to assume a fixed rate of unreported human-caused mortality (UHCM) when determining harvest opportunity
  - Reverting to a quota system
    - Does not provide recommended HGL
  - Establishing a set UHCM rate
  - Using the UHCM rate effectively reduces the quota

90

Proposal 53



90

## Unreported Human-Caused Mortality

- Collared wolf mortality in GMU 2:
    - Over 3 years, 3 of 8 collared wolves died from UHCM (Roffler et al., 2016)
    - Over 9 years, 16 of 34 collared wolves died from UHCM (Person and Russel, 2008)
      - Reported rates are cumulative, not annual.
- Annual rates of UHCM are:
- Difficult to assess without MANY collared wolves
  - Do not appear to drive population trend

91

Proposal 53



91

## Starting population

- + Reproduction
- + Immigration
- Reported harvest
- Unreported human-caused mortality (including wounding loss and illegal take)
- Natural mortality
- Emigration

---

**= Current Population**

92

Proposal 53



92

## Considerations

- No evidence to suggest UHCM drives the population
- Very expensive to accurately estimate UHCM
- An assumed fixed rate of UHCM limits department's harvest management flexibility
- Unnecessary with annual population estimates

93

Proposal 53



93

## Proposal 53

Establish an estimated unreported mortality rate of 35-50% to be used in establishing an annual harvest quota

Proposed by *Alaska Wildlife Alliance*

### Recommendations

Department **OPPOSES**

Craig AC **OPPOSES** (0-8) • Klawock AC **OPPOSES** (0-9)

East POW AC **OPPOSES** (0:14) • Ketchikan AC **OPPOSES** (0-9)

94



94

# Proposal 54

Task the department with identifying 2/3rds of Unit 2 land area for protected status for wolves

Proposed by *Alaska Wildlife Alliance*

## Recommendations

Department **OPPOSES**

Craig AC **OPPOSES** (0:8) • Klawock AC **OPPOSES** (0:9)

East POW AC **OPPOSES** (0:14) • Ketchikan AC **OPPOSES** (0:9)

95



95

## Current Trapping Closure

- Joe Mace Island Marine Park
- Small island off Point Baker, North POW



96

Proposal 54



96



## Other examples of area closures

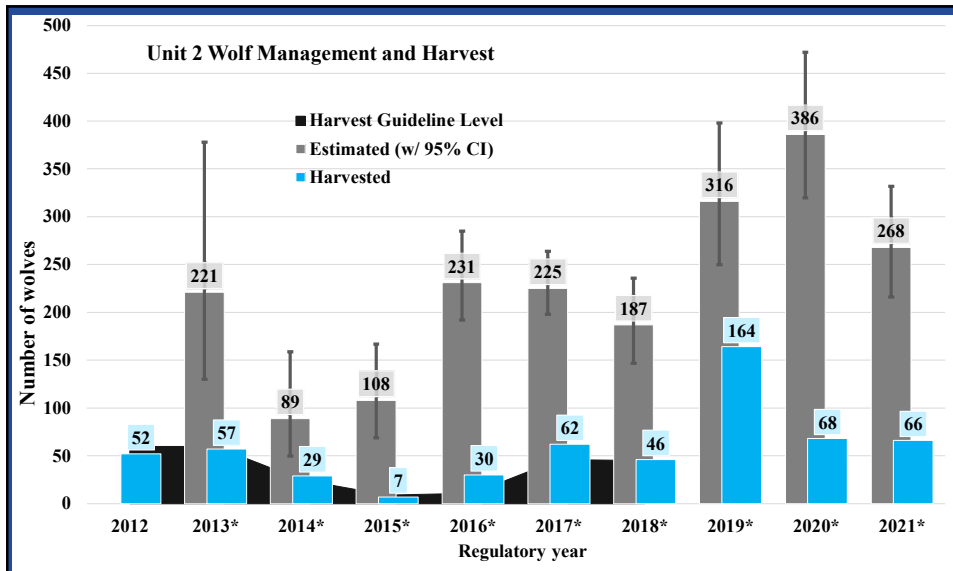
- Petersburg Road System Closed Area
  - Area closed to taking big game
  - Public safety concern*
- Kuiu Island (Unit 3)
  - Closed to marten trapping
  - Conservation concern*

97

Proposal 54



97



\*Season closed by emergency order

98

Proposal 54



98

## Discussion

- Protecting 2/3 of Unit 2 would not protect 2/3 of wolves from harvest
  - Difficult to annually determine pack boundaries
  - Wolves not associated with packs move throughout Unit 2 and would remain susceptible to harvest
  - Wolf pack territories change, and packs absorb vacant areas when opportunity arises

99

Proposal 54

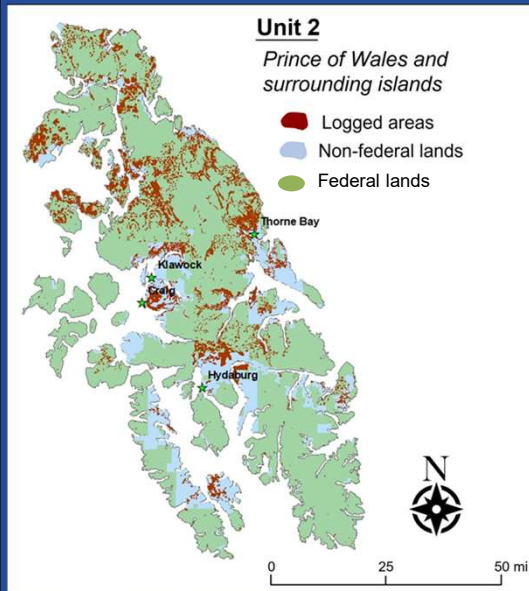


99

### Unit 2

Prince of Wales and surrounding islands

- Logged areas
- Non-federal lands
- Federal lands



## Discussion

~80% of Unit 2 is federal

Proposal applies to:

- 1) Non-federally qualified users anywhere in Unit 2
- 2) Federally qualified users on state land

100



100

## Considerations

- To be effective similar federal subsistence regulations would need to be adopted by the FSB
- Difficult to enforce
- Trappers living far from areas open to wolf trapping would be disenfranchised

101

Proposal 54



101

## Proposal 54

Task the department with identifying 2/3rds of Unit 2 land area for protected status for wolves

Proposed by *Alaska Wildlife Alliance*

### Recommendations

Department **OPPOSES**

Craig AC **OPPOSES** (0:8) • Klawock AC **OPPOSES** (0:9)

East POW AC **OPPOSES** (0:14) • Ketchikan AC **OPPOSES** (0:9)

102



102

## Proposal 202

Change the Unit 2 wolf hunting and trapping seasons and rescind the Commissioners authority to EO season

Proposed by *Public*

### Recommendations

Department **NEUTRAL**

Craig AC TNA

East POW AC **SUPPORT** (13:1:0)

103



103

## Background

- Original proposal only addressed hunting season.
  - ADF&G confirmed the author intended to include trapping season.
- Proposal requests a fixed sustainable GMU 2 wolf season length that cannot be closed by Emergency Order (EO).

104

Proposal 202



104

## Background

- Proposal did not recommend specific hunting or trapping season lengths.
- Current GMU 2 wolf seasons
  - Hunting: December 1 – March 31
  - Trapping: November 15 – March 31

105

Proposal 202



105

## Discussion

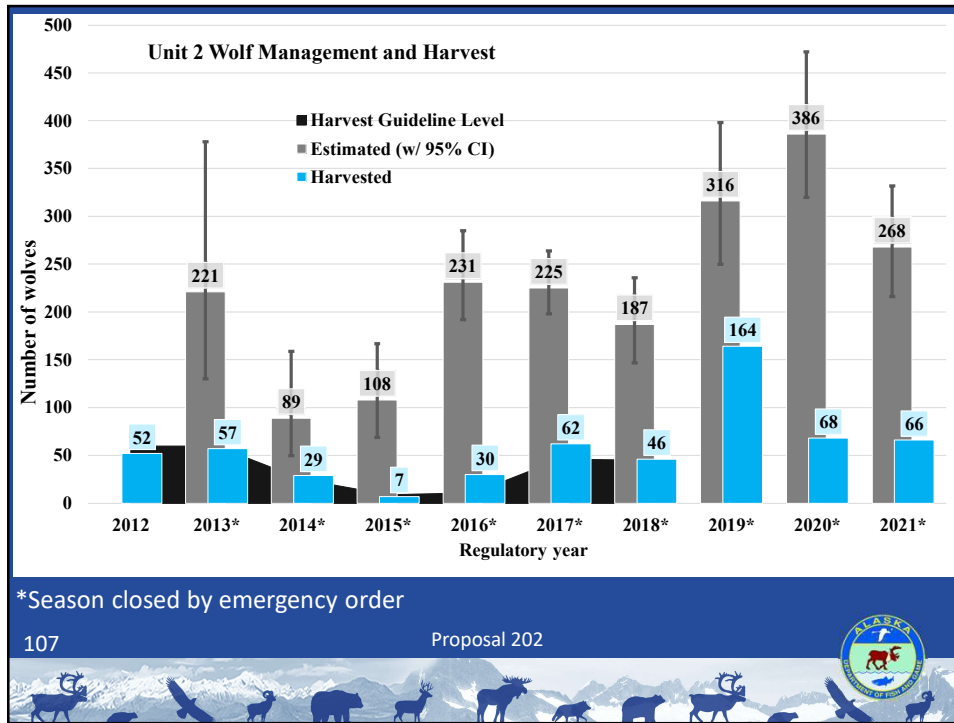
- Fixed season length lacks flexibility to manage a dynamic wolf population.
  - Flexible harvest management required to maintain population within an objective range.
  - Fixed season length risks chronic under or over harvest of wolves.
  - Ineffective without similar changes to federal subsistence regulations adopted by the FSB
- Current management strategy provides predictability.
  - The department adjusts harvest season length to ensure sustainable harvest.
  - EO announcing closure date issued before trapping season opens.

106

Proposal 202



106



107

## Summary

- Fixed harvest season length risks chronic under or over harvest.
- Changing season dates would misalign state and federal trapping season dates.
- ADF&G strongly recommends retaining a GMU 2 wolf population objective in regulation.
- Board of Game lacks authority to rescind Commissioner’s EO authority.

108 Proposal 202

108

## Proposal 202

Change the Unit 2 wolf hunting and trapping seasons and  
rescind the Commissioners authority to EO season

Proposed by *Public*

### Recommendations

Department **NEUTRAL**

Craig AC **TNA**

East POW AC **SUPPORT** (13:1:0)

109



109