



1



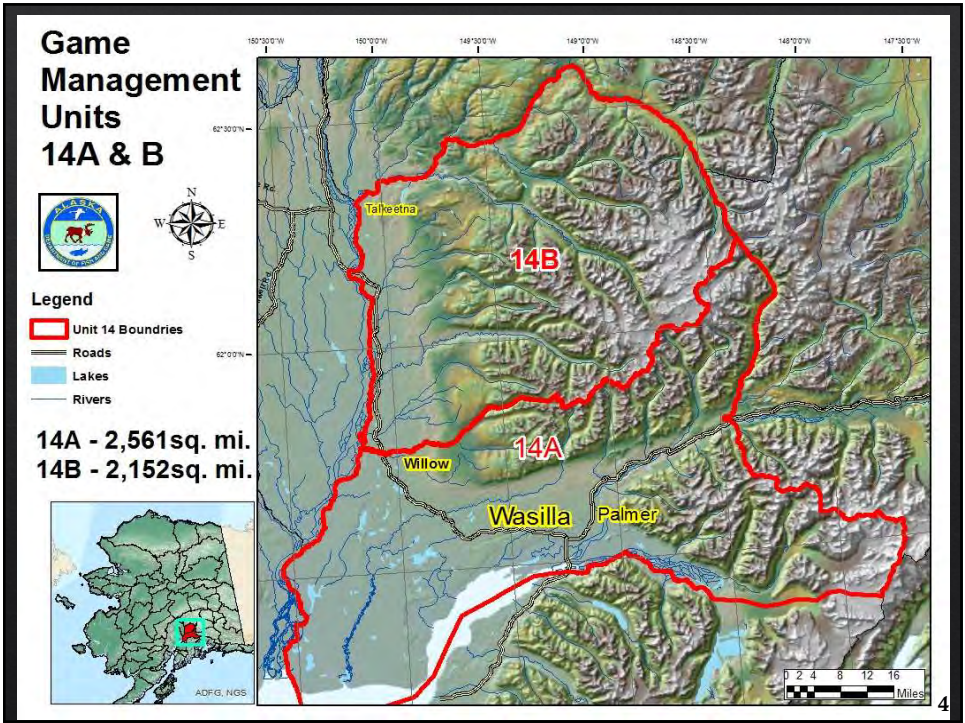
2

### Palmer Area Office

- Wildlife management of Units 14A, 14B, 16A, and 16B
- High development in the Matanuska-Susitna Valley
- High public service, front office, and sealing demand
- Conducting habitat evaluation and modification plans
- Vehicle collisions with moose on road and railroad represent a public safety concern.

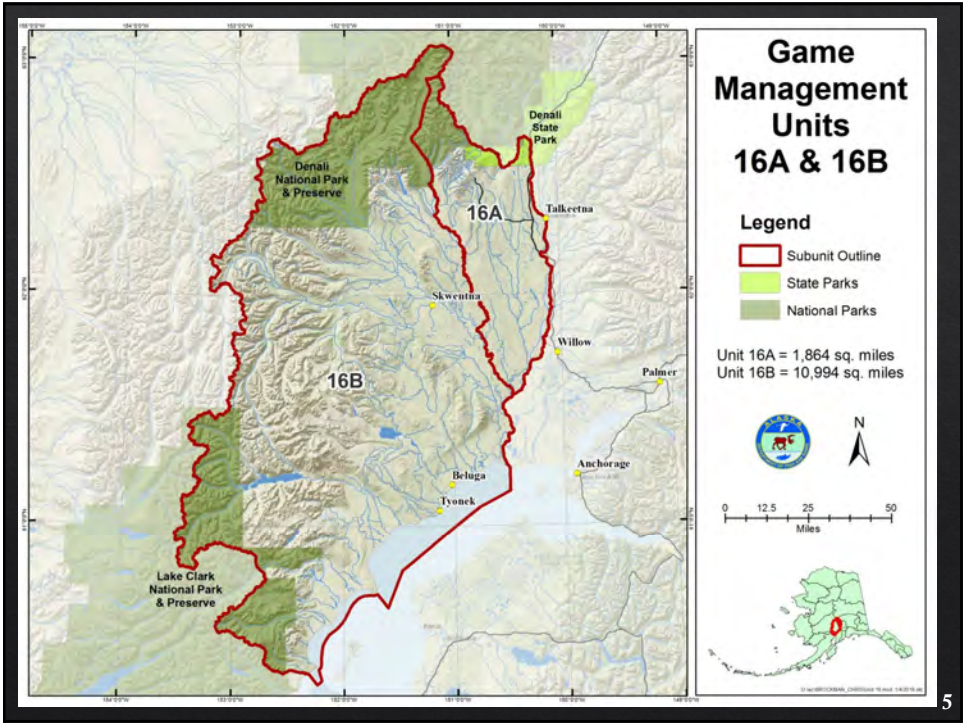
3

3




4





5

# Moose



- Most Units are within or above the population objective
- Bull to cow ratios are good in almost all units.
- Harvest within objective in 16B, above in 14A, and below in 16A, and 14B
- Moose mortality from vehicles & trains averages 390 annually
- Reports of winter killed moose were high in the spring of 2020 in parts.
- Nine proposals for moose

6

6

## Dall Sheep



### Unit 14A Chugach

- 2019 Minimum Count  
642 Sheep 352 Ewes, 93 Lambs  
& 197 Rams (14 Full curl)
- Approx. 200 fewer than 2017
- Draw hunt (Any Ram)
- Permits reduced from 75 to 53
- 5 year average harvest 19 rams

7

7

## Dall Sheep (continued)

### Units 14A & 14B Talkeetna

- Stable
- General Season (Full Curl)
- 5 year average harvest 12 rams




### Unit 16 Alaska Range

- Stable at low density
- General Season (Full Curl)
- 5 year average harvest 10 rams
- Four proposals for sheep

8

8

# Mountain Goat



Unit 14A and 14B Talkeetna Population: (≤ 50)

- No hunting season


Chugach Population: Increasing, peaked in 2020

- Draw and registration hunts
- No proposals for goats

9

9

# Caribou



16B Rainy Pass Herd

- General Season (1 Bull)

14B Western Talkeetna Population

- DC590 Draw Permit (1 caribou)
- One proposal for caribou

10

10



# Black Bear



- Stable in Units 14A & 14B
- Stable at 3,600 to 4,300 in Unit 16
- Unit 16 Black Bear Control 2007 2016
- One proposal for black bear

11

11

# Brown Bear




- Stable in Units 14A and 14B
- Stable at 625 to 1,250 in Unit 16B
- Increased harvest opportunities in Unit 16B
- Few nuisance bear complaints near communities
- Seven proposals for brown bear

12

12

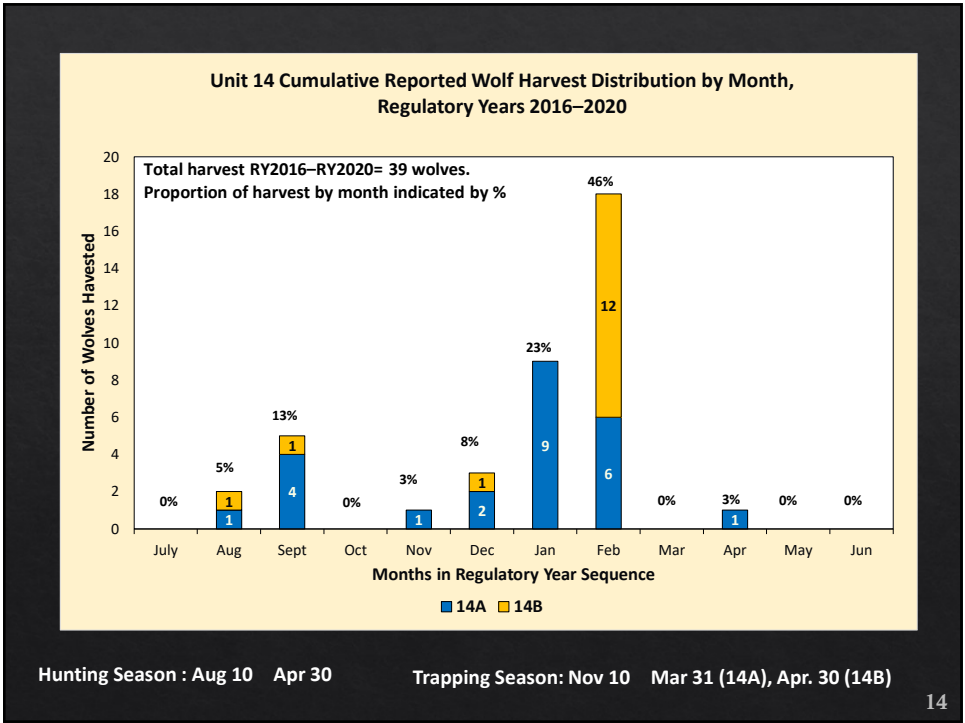
# Wolf



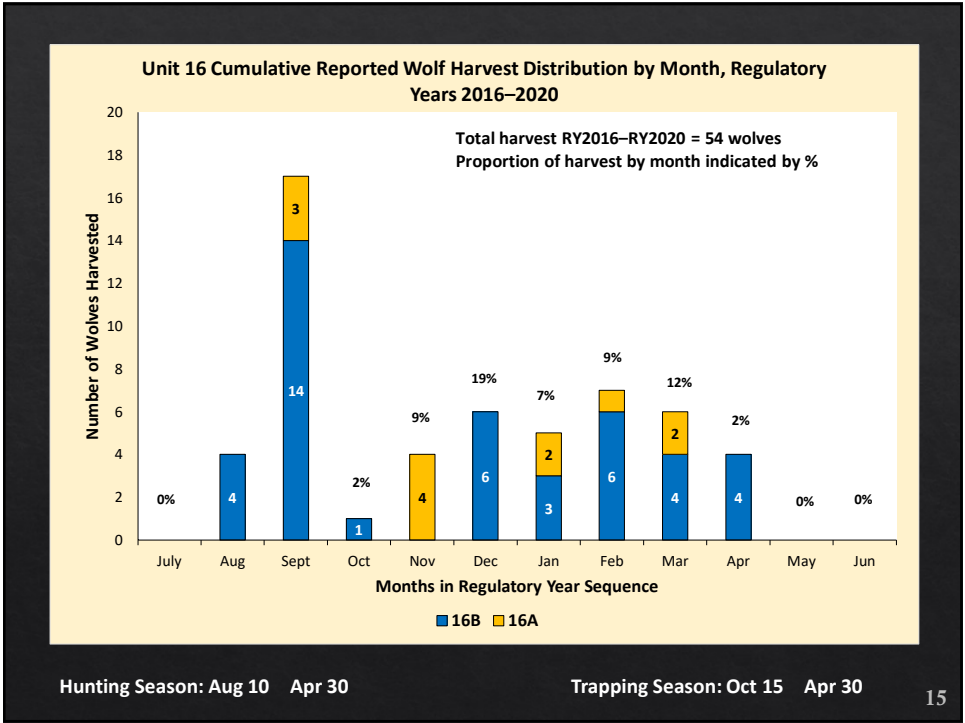
- Unit 14A & 14B harvest indicates stable population
- SDA Wolf Control in Unit 16B 2004–2016
- SDA Wolf Control Area expanded to include portions of Unit 16A in Spring 2006 (suspended 2017)
- No proposals for wolves

13


13




14



15



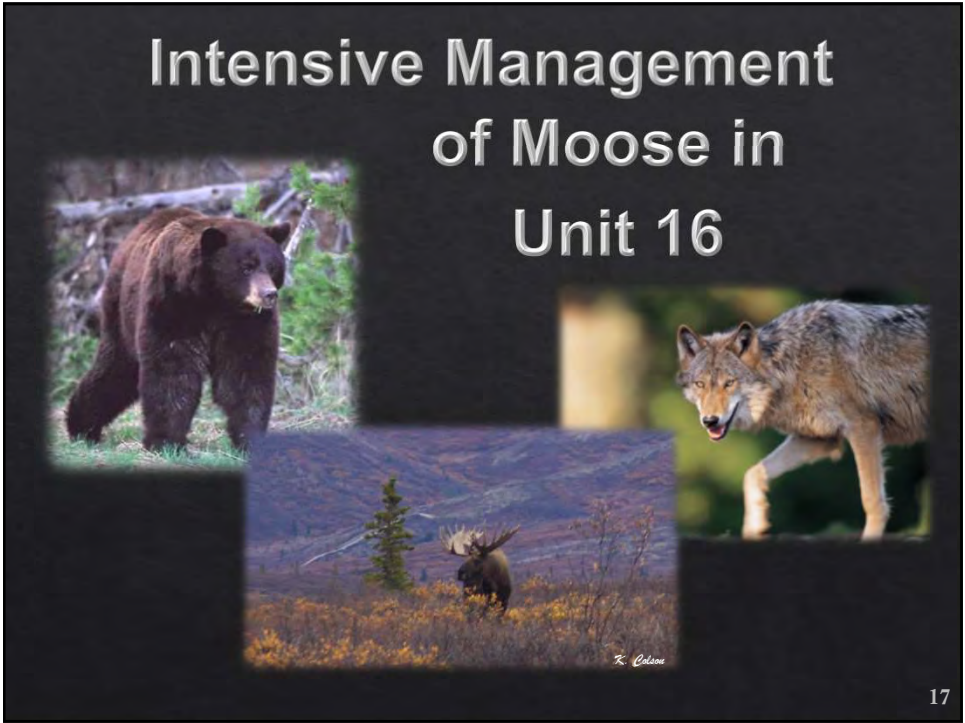
## Furbearers



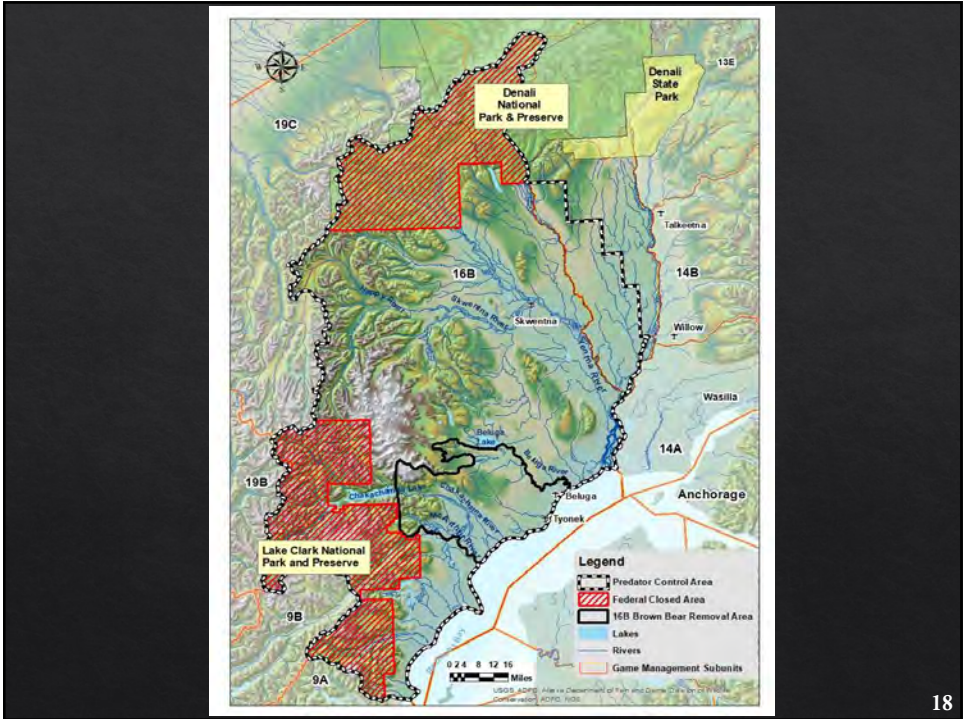
Species	Abundance	Change
Beaver	Common	None
Coyote	Common	None
Ermine	Common	None
Lynx	common	None
Marten	Scarce	Stable
Mink	Scarce	None
Muskrat	Scarce	None
Red Fox	Common	None
River Otter	Common	None
Wolf	Common	Increasing
Wolverine	Scarce	None

16





17




18

## Intensive Management Objectives for Wolves In Unit 16B

- Reduce the spring wolf population to 35–55 wolves

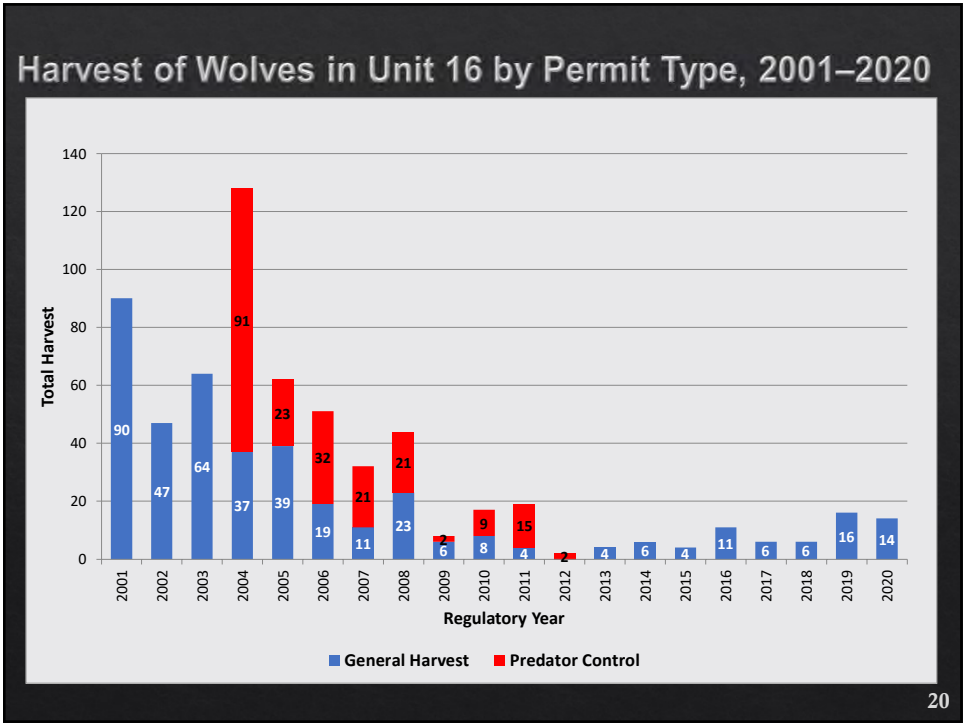
### Wolf Population Estimates

- 2003 estimate: 175 180 wolves
- 2017 preliminary estimate > 35
- Current Estimate: 67 68



19

19



20


# Black Bear IM Population Objective

- Reduce the population to 700 bears

Population Estimate:

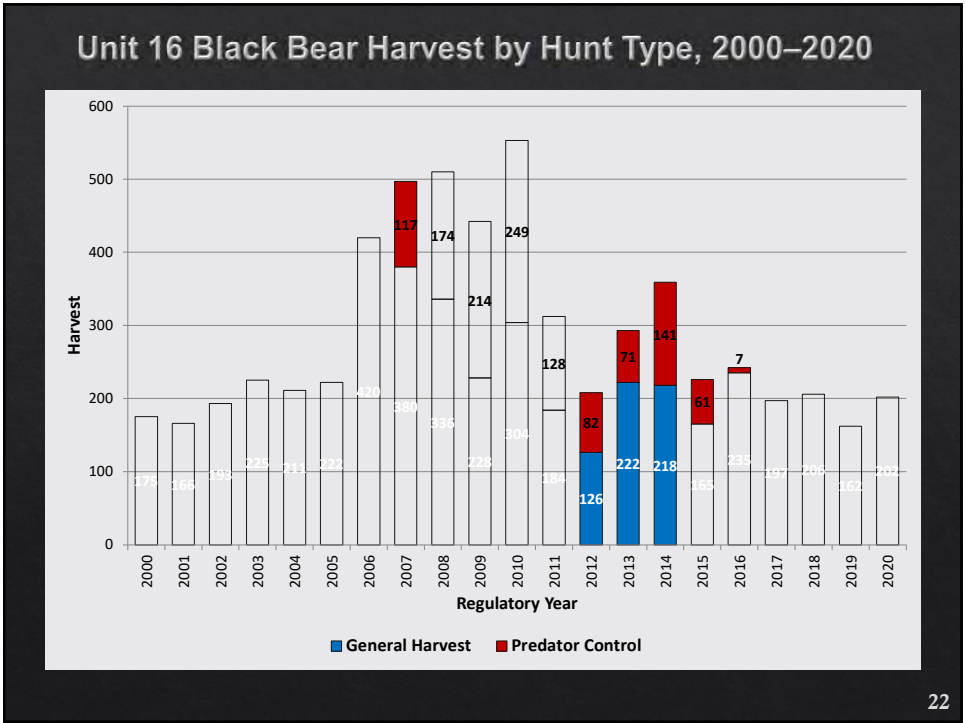
2007 16B:    3,200    3,800

Current Estimate Unknown



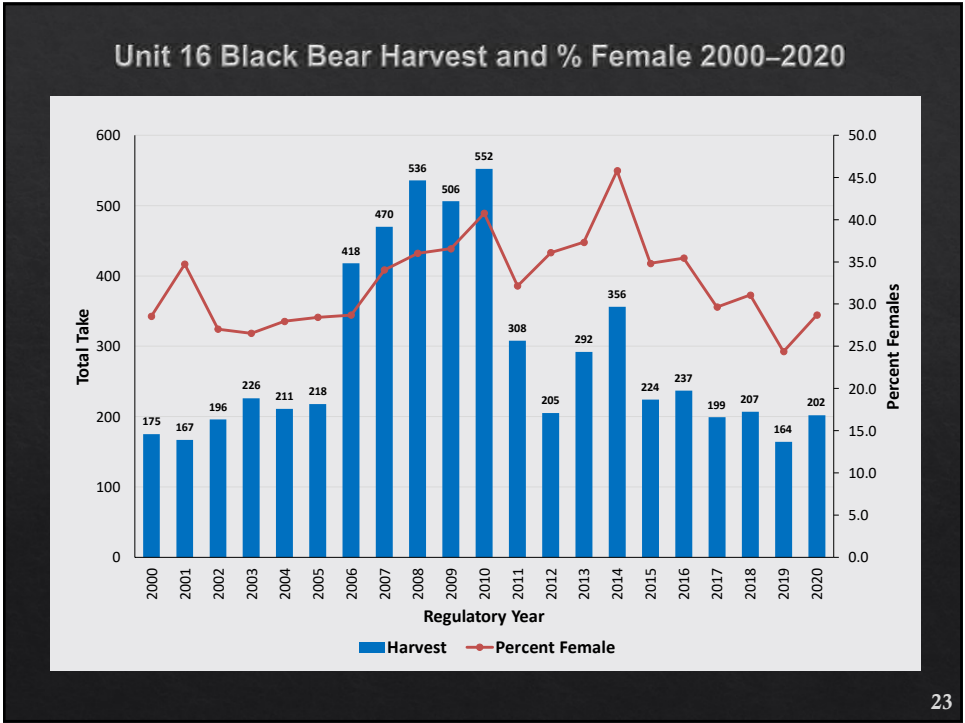
21

21



22





23

### Brown Bear IM Population Objective

- Reduce the population by 60% to 375 bears

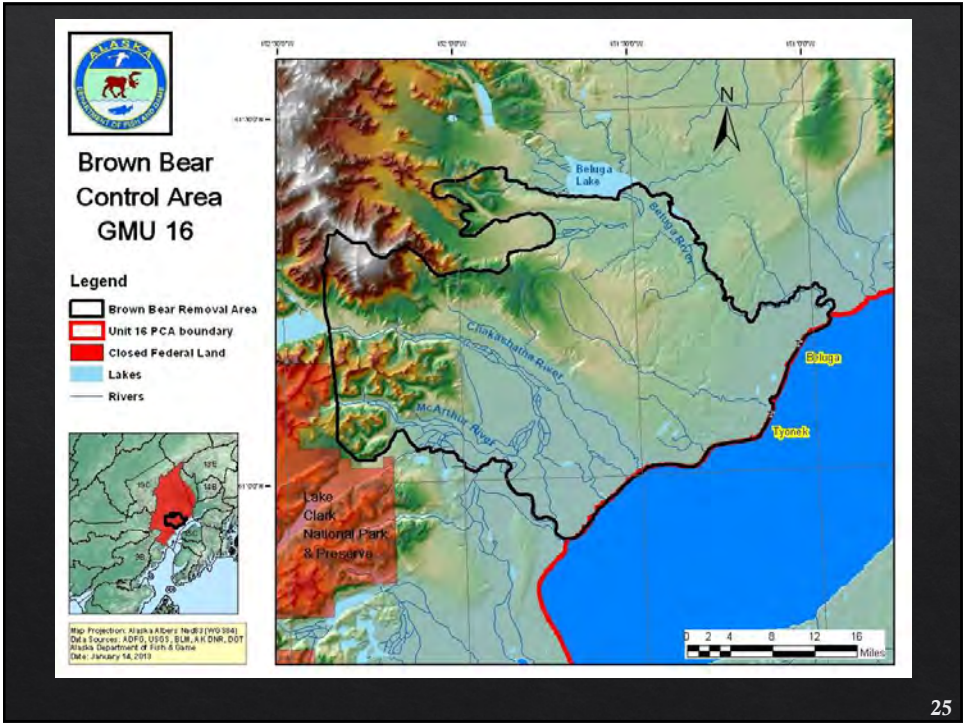
Current Population Estimate:

2007 16B: 625 1,250

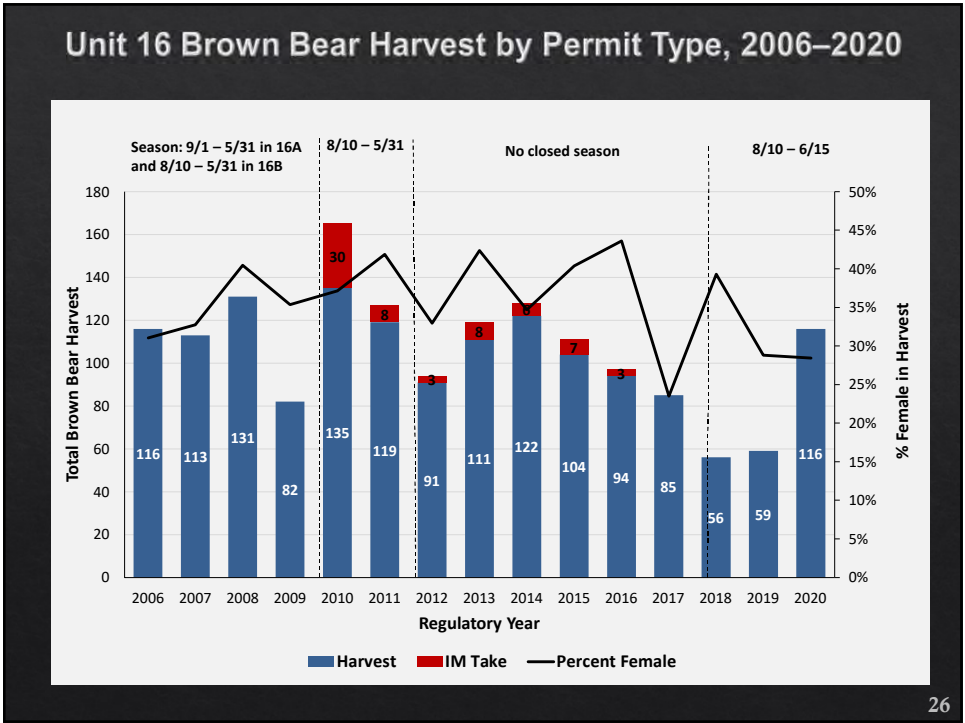
Current Estimate Unknown

24

24



25



26

# 16B Moose Population Status

Population Objective: 6,500 – 7,500

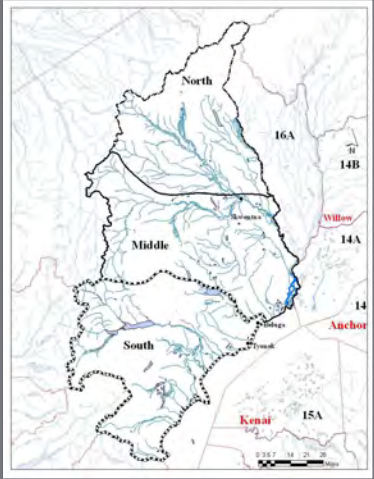
Estimate: 8485 ±1213

Calf/100 Cows: 16

Bull/100 Cows: 34

Harvest Objective: 310–600

2020 Harvest: 413



27

27

# Moose Population Estimates by Assessment Area

Survey Unit	IM Population Objective proportional to area (midpoint)	Recent Moose Population Estimate (and year of survey)	Percent Recovery to Objective Midpoint	Bull: 100 Cow Ratio (and year of est.)
16B North	1,820–2,100 (1,960)	1,671 (2019)	85%	60 (2014)
16B Middle	3,120–3,600 (3,360)	3,740 (2020)	111%	28 (2020)
16B South	1,560–1,800 (1,680)	3,074 (2018)	183%	32 (2019)
Unit 16B	6,500–7,500 (7,000)	8,485	121%	34

28

28



