



# Board of Game

February 2018

Palmer Area Overview

RCX, Tab X



# Palmer Area Staff

Tim Peltier – Area Biologist

Chris Brockman – Asst. Area Biologist

# Palmer Area Office

- **Wildlife management of Units 14A, 14B, 16A, and 16B**
- **High development in the Matanuska-Susitna Valley**
- **High public service, front office, and sealing demand**
- **Conducting habitat evaluation and modification plans**
- **Vehicle collisions with moose on road and railroad represent a public safety concern.**

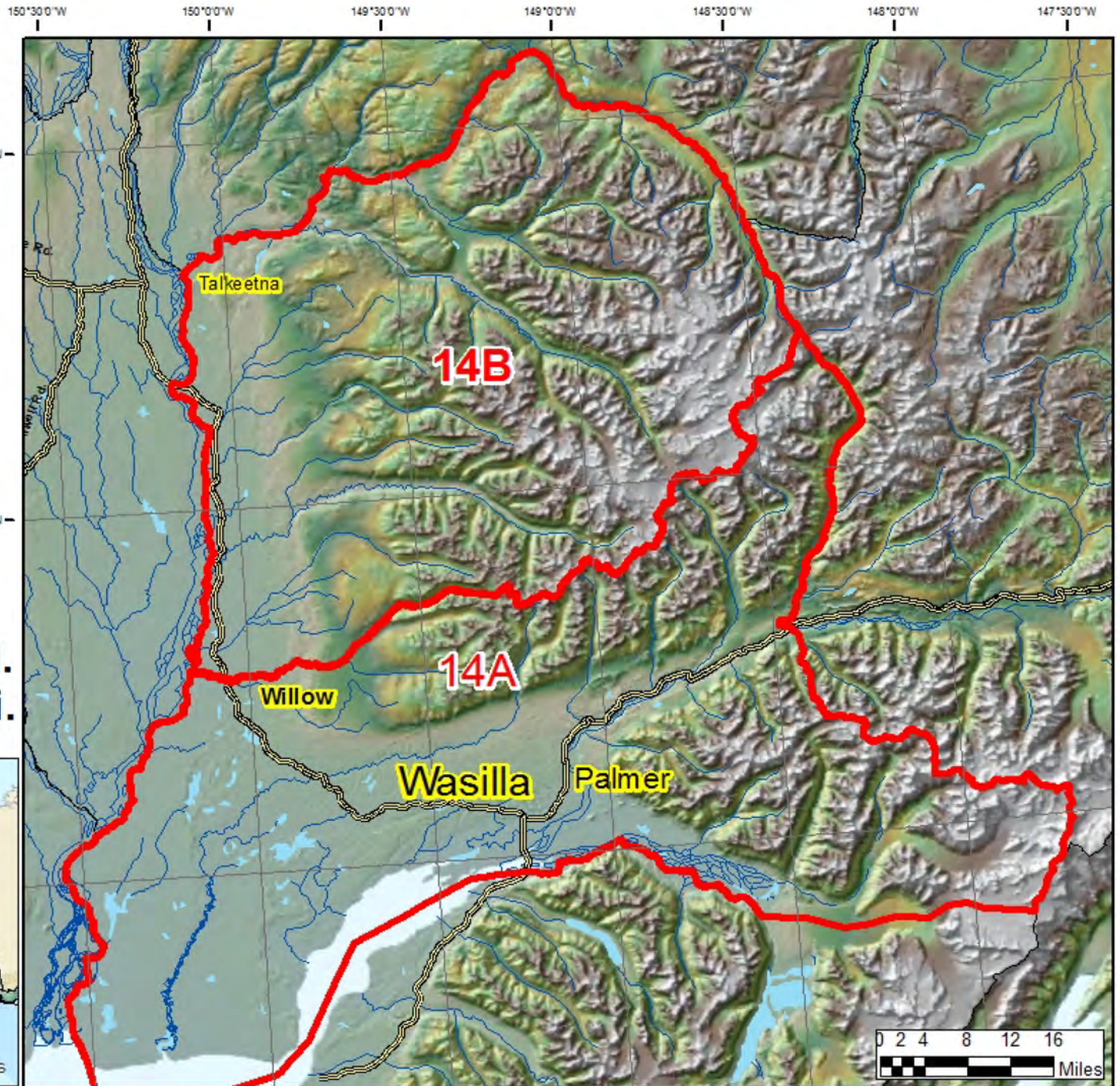
# Game Management Units 14A & B

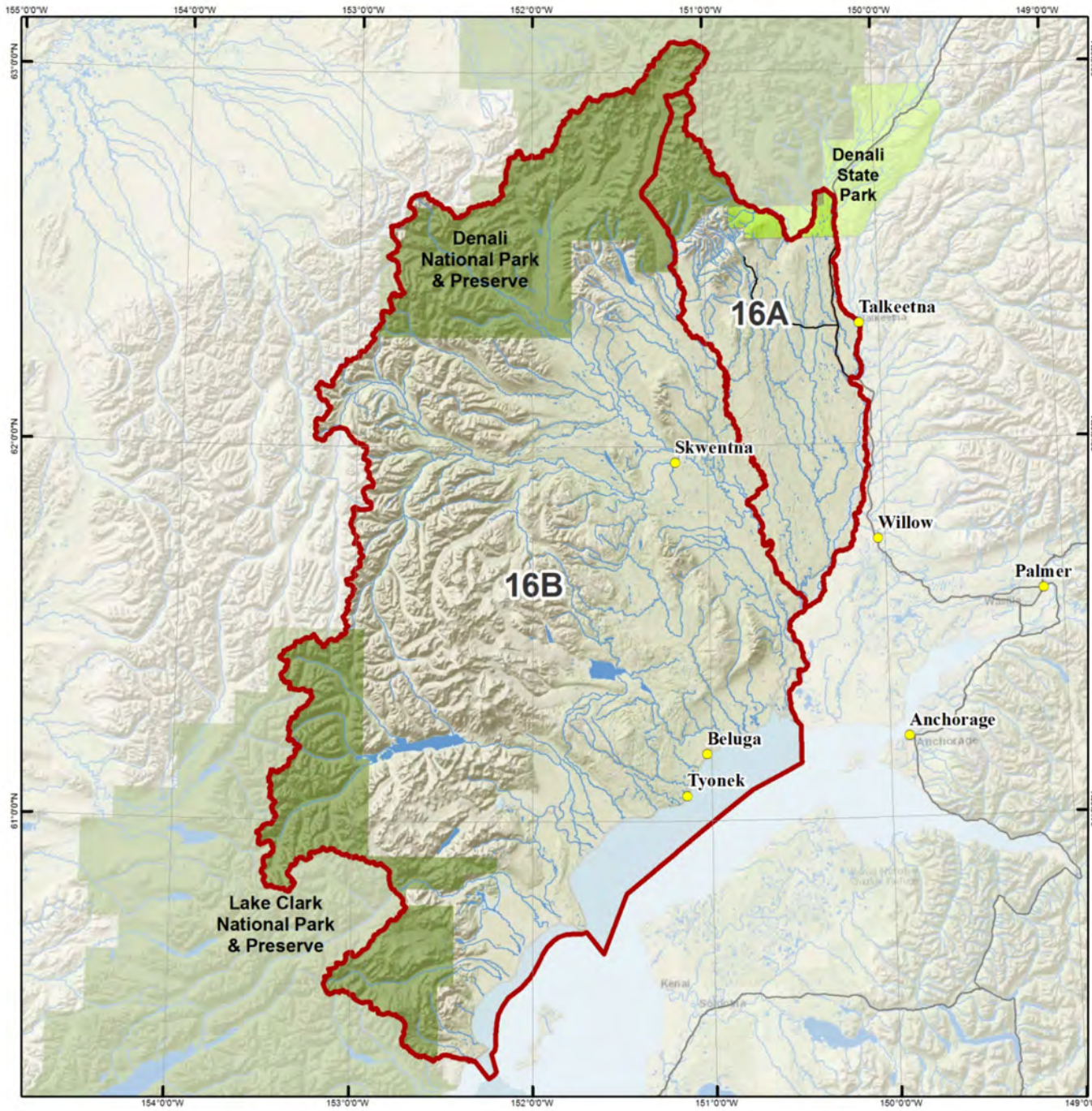


## Legend

- Unit 14 Boundries
- Roads
- Lakes
- Rivers

14A - 2,561sq. mi.  
14B - 2,152sq. mi.



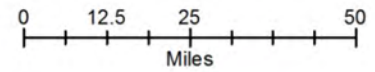


# Game Management Units 16A & 16B

## Legend

-  Subunit Outline
-  State Parks
-  National Parks

Unit 16A = 1,864 sq. miles  
 Unit 16B = 10,994 sq. miles



U:\w\BROCKMAN\_CHRIS\Unit 16.mxd 1/4/2018 skt

# Moose



- All of the Units are at or above the population objective
- Bull to cow ratios are very good in all units except 14A.
- Harvest within objective in all units except 14A, it is above objective
- Moose mortality from vehicle & train collisions averages 343 annually

*Proposals: 77, 78, 83, 84 & 85*

# Dall Sheep



- **Unit 14A Chugach – Increasing**
  - Draw hunt (Any Ram)
  
- **Units 14A & 14B Talkeetna – Increasing**
  - General Season (Full Curl)
  
- **Unit 16 Alaska Range population low – Stable?**
  - General Season (Full Curl)

*Proposal: 79*

# Mountain Goat



- **Unit 14A and 14B Talkeetna Population: ( $\leq 50$ )**
  - No hunting season
- **Chugach Population: Increasing**
  - Draw and registration hunts

*Proposal: 80*



# Caribou



## 16B Rainy Pass Herd

- General Season (1 Bull)

## 14B Western Talkeetna Population

- DC590 Draw Permit (1 caribou)

*No Proposals*

# Black Bear



- **Stable in Units 14A & 14B**
- **Stable at 3,600 to 4,300 in Unit 16**
- **Unit 16 Black Bear Control 2007—2016**

*Proposals: 86 & 89*

# Brown Bear



- **Stable in Units 14A and 14B**
- **Stable at 625 to 1,250 in Unit 16B**
- **Increased harvest opportunities in Unit 16B**
- **Few nuisance bear complaints near communities**

*Proposals: 81, 87, 88 & 89*

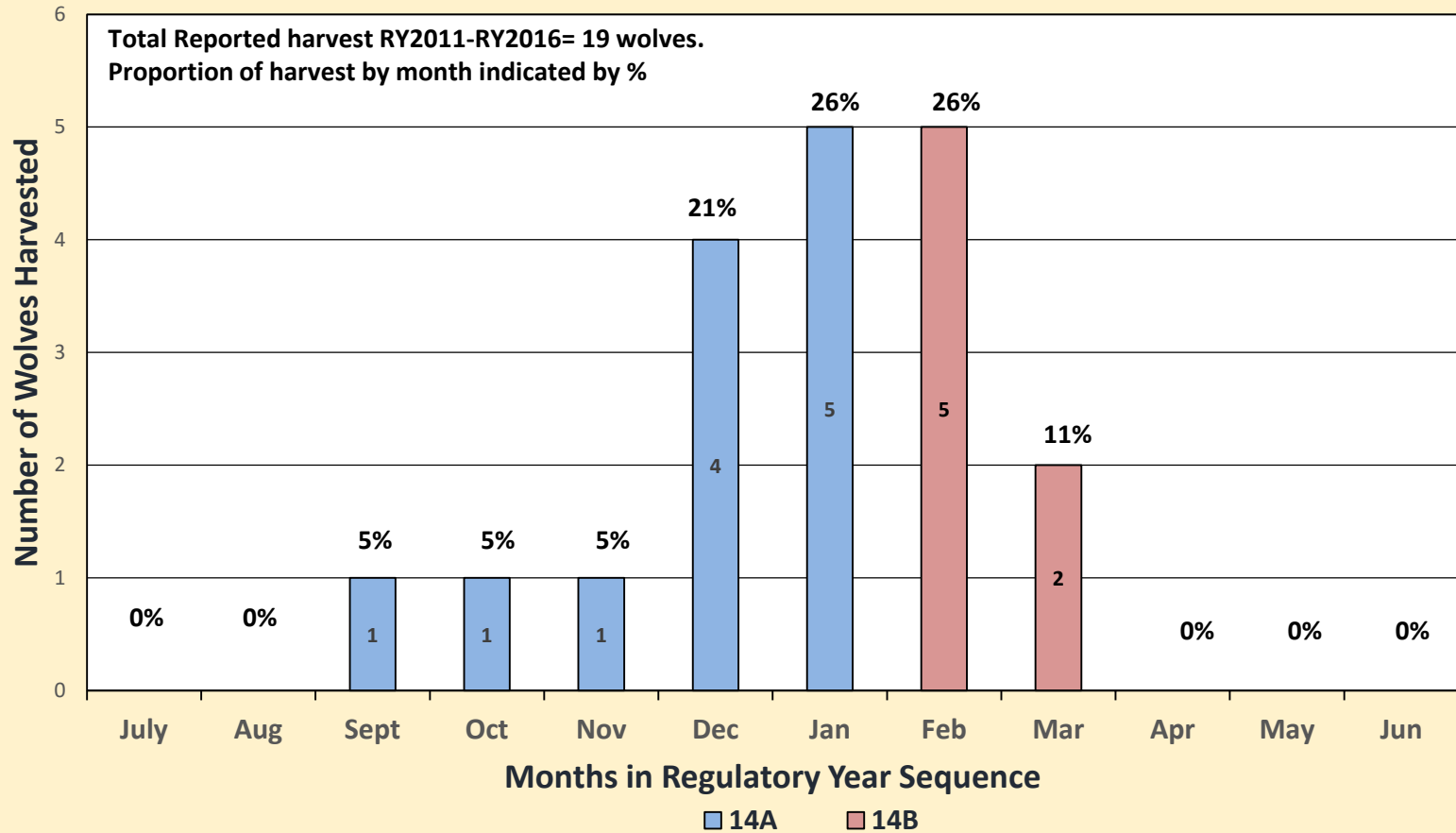
# Wolf



- **Unit 14A & 14B harvest indicates stable population**
- **SDA Wolf Control in Unit 16B 2004 – 2016**
- **SDA Wolf Control Area expanded to include portions of Unit 16A in Spring 2006 (suspended 2017)**

*No Proposals*

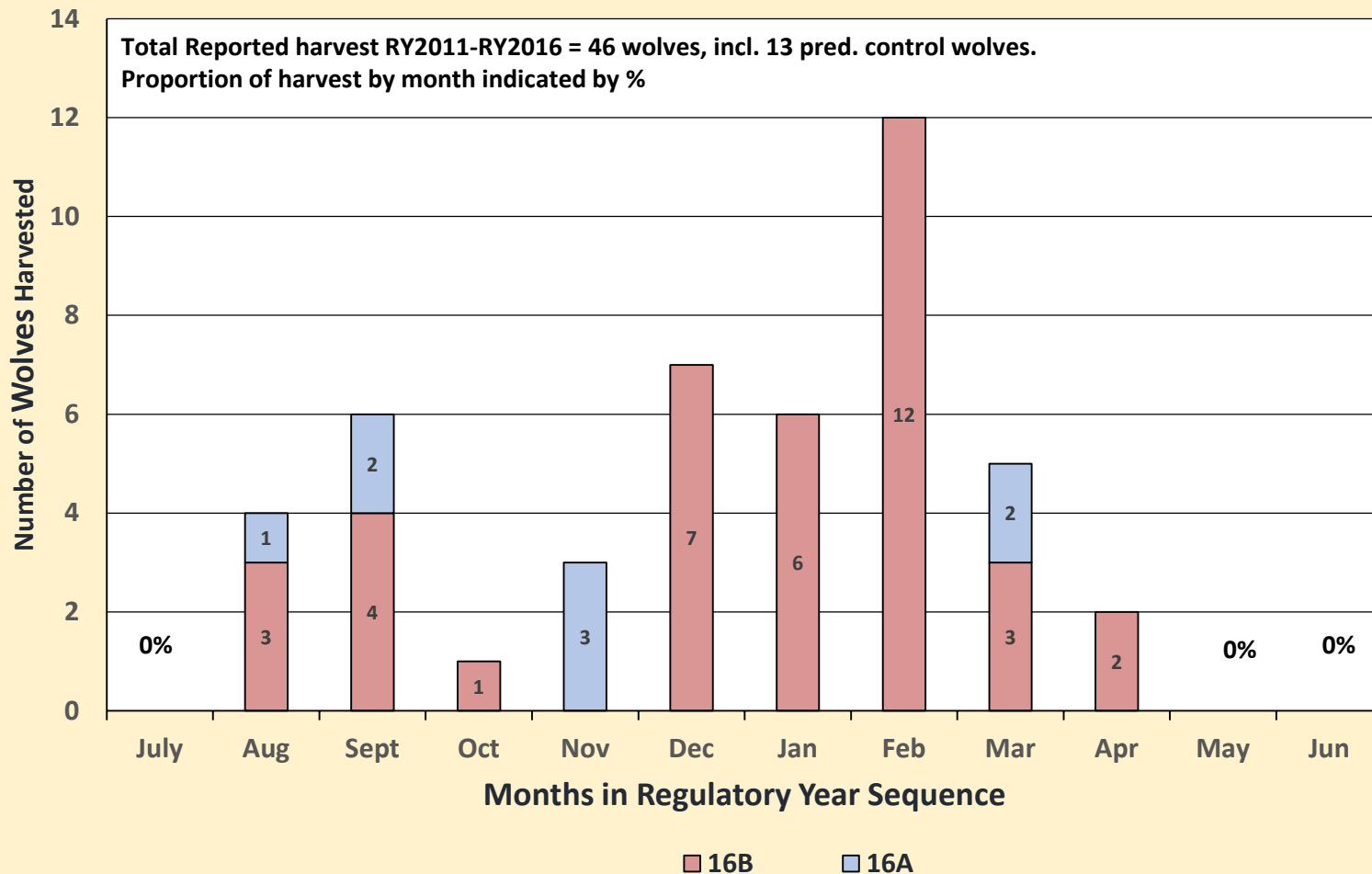
## Unit 14 Cumulative Reported Wolf Harvest Distribution by Month, Regulatory Years 2011-2016



Hunting Season : Aug 10 – Apr 30

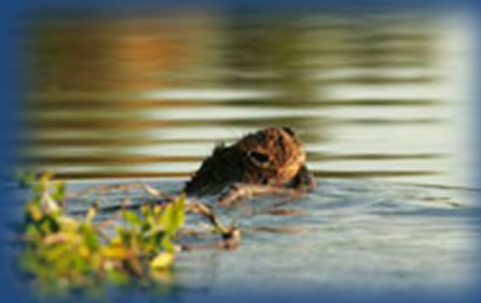
Trapping Season: Nov 10 – Mar 31 (14A), Apr. 30 (14B)

## Unit 16 Cumulative Reported Wolf Harvest Distribution by Month, Regulatory Years 2011-2016



Hunting Season: Aug 10 – Apr 30

Trapping Season: Oct 15 – Apr 30



# Furbearers



Species	Abundance	Change
Beaver	Common	None
Coyote	Common	None
Ermine	Common	None
Lynx	common	Increasing
Marten	Scarce	Stable
Mink	Scarce	None
Muskrat	Scarce	None
Red Fox	Common	None
River Otter	Common	None
Wolf	Scarce	Increasing
Wolverine	Scarce	None

# Intensive Management of Moose in Unit 16







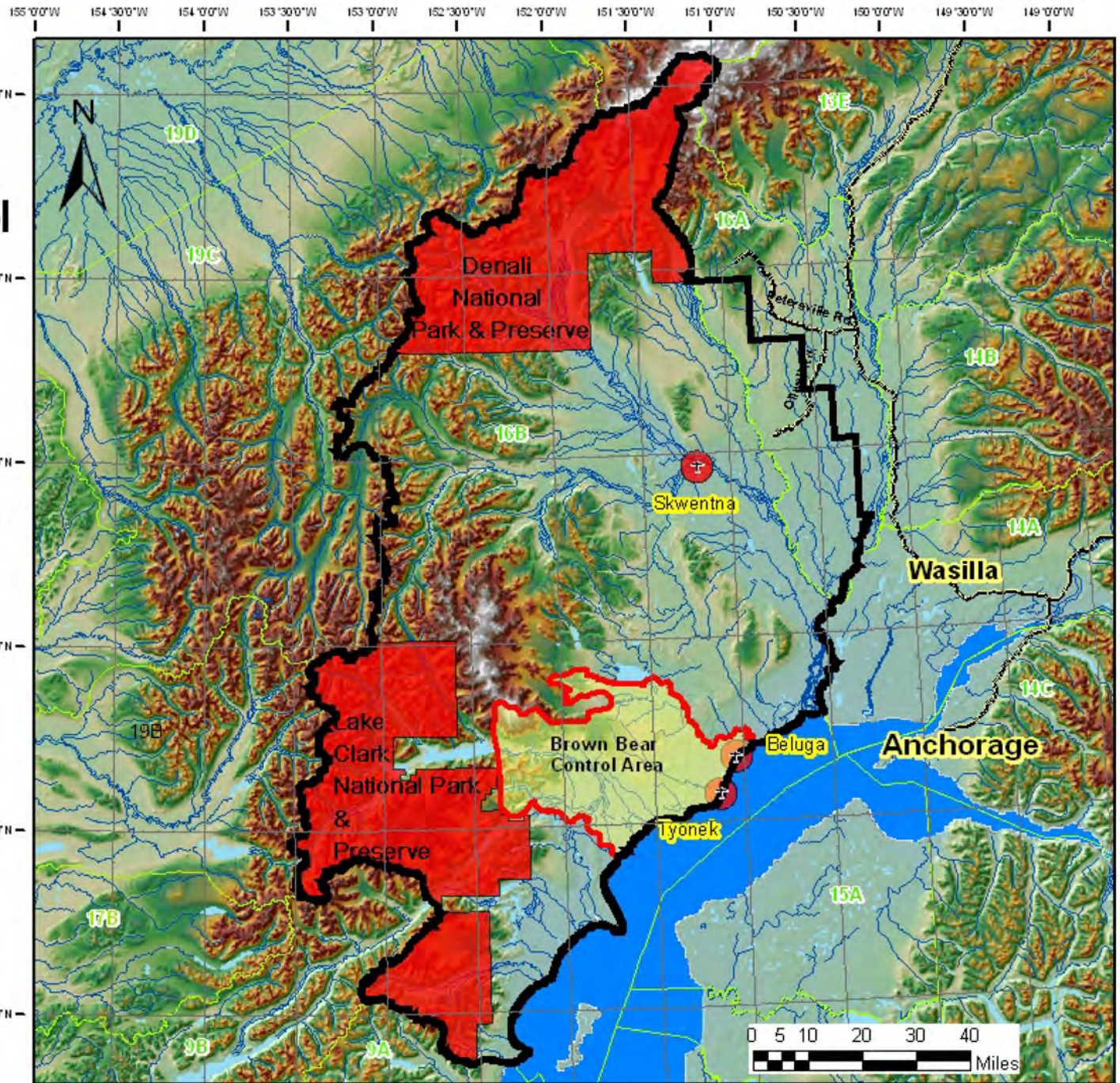
# Predator Control Areas GMU 16

## Legend

- Unit 16 PCA boundary
- Roads
- Brown Bear Removal Area
- Land closed to SDA
- Game Management Units
- Lakes
- Rivers



Map Projection: Alaska Albers NAD83 (WG 84)  
Data Sources: ADFG, USGS, BLM, AK DNR, DOT  
Alaska Department of Fish & Game  
Date: January 14, 2013



# Intensive Management Objectives for Wolves In Unit 16B

- **Reduce the spring wolf population to 35 – 55 wolves**

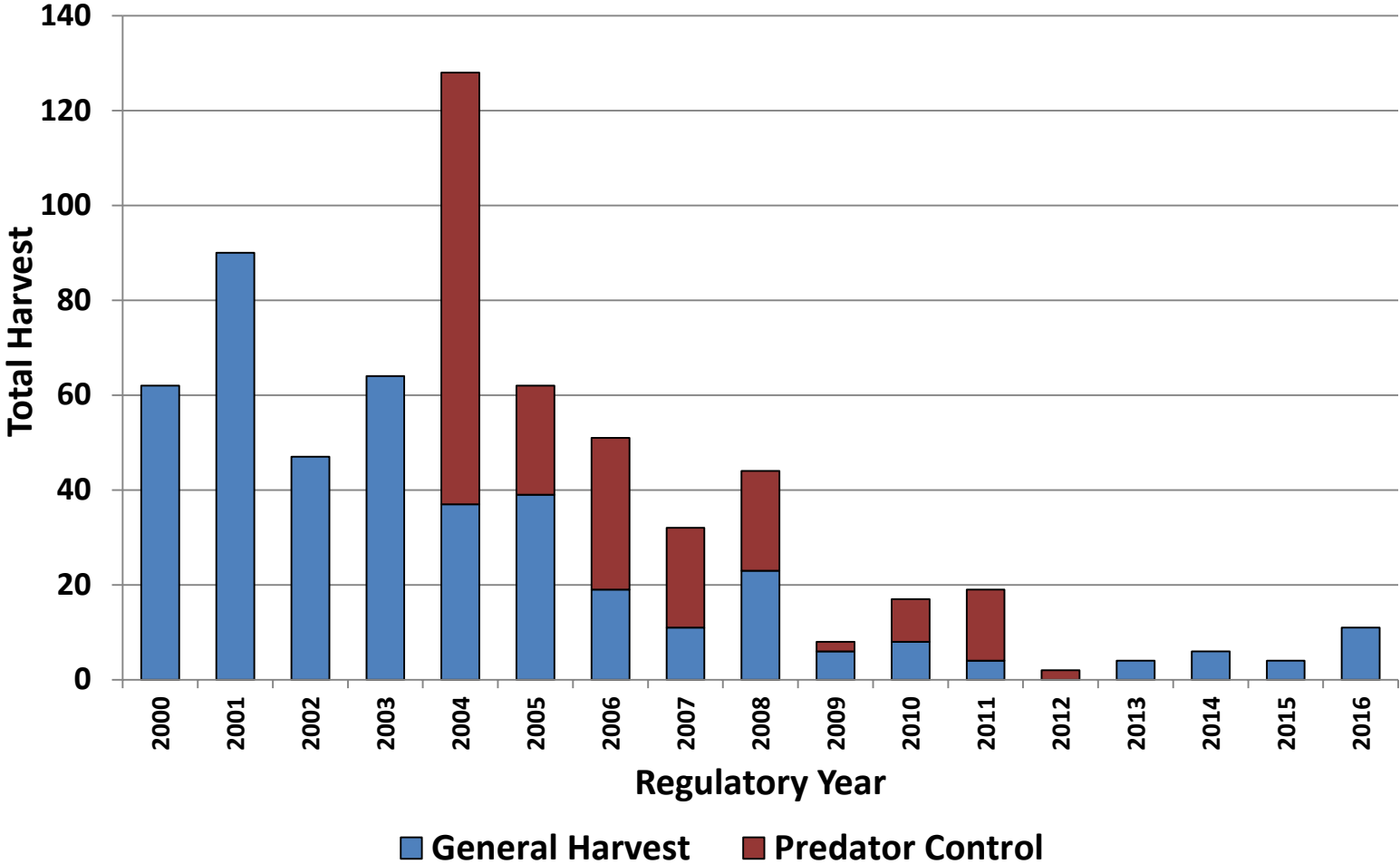
## Wolf Population Estimates

- **2003 estimate: 175–180 wolves**
- **2017 preliminary estimate > 35**



# Harvest of Wolves in Unit 16 by Permit Type, 2000–2016

## Unit 16 Wolf Harvest by Permit Type 2000-2016



# Black Bear IM Population Objective

- Reduce the population to 700 bears

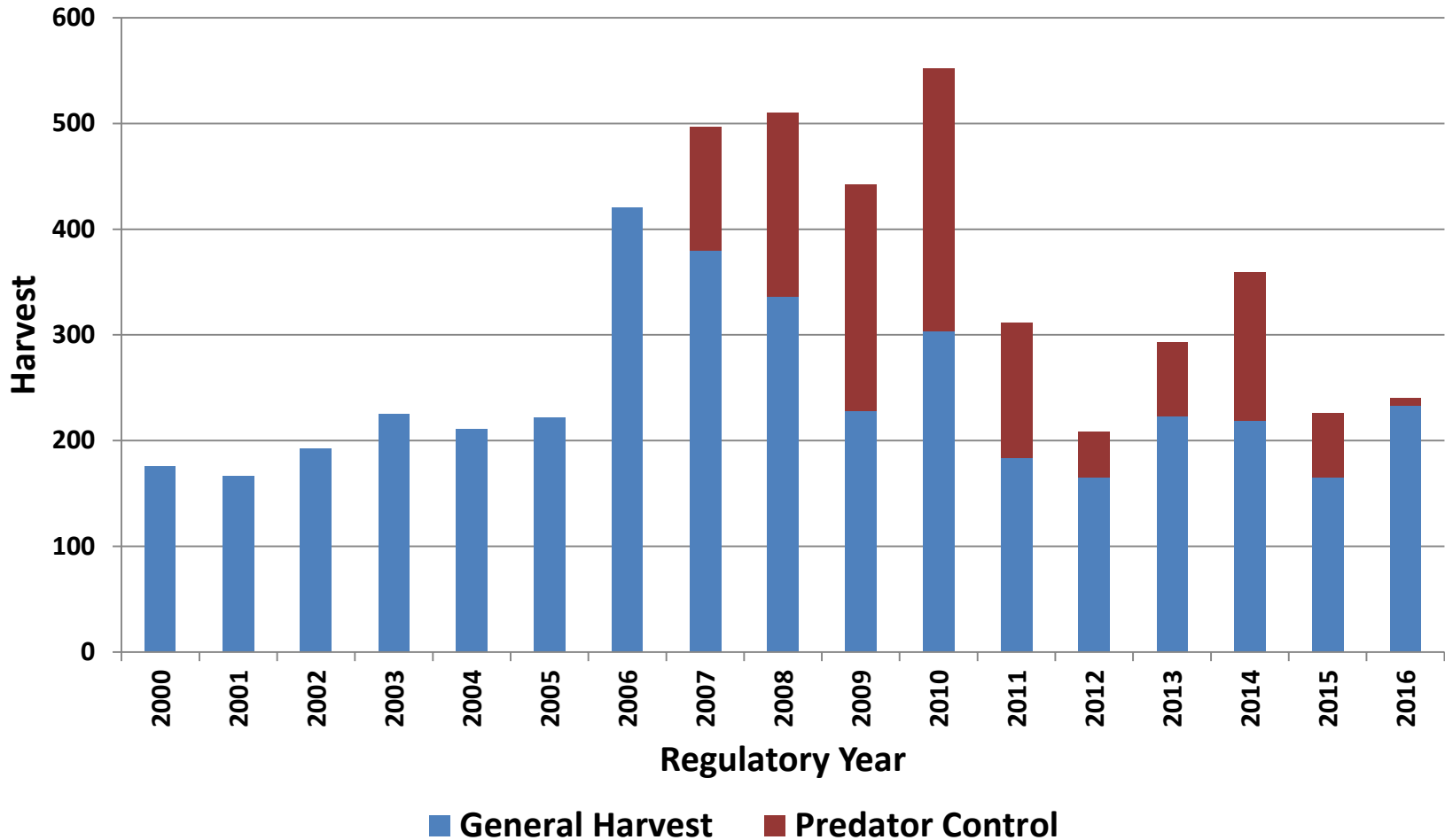
Current Population Estimate:

**16B: 3,200 – 3,800**



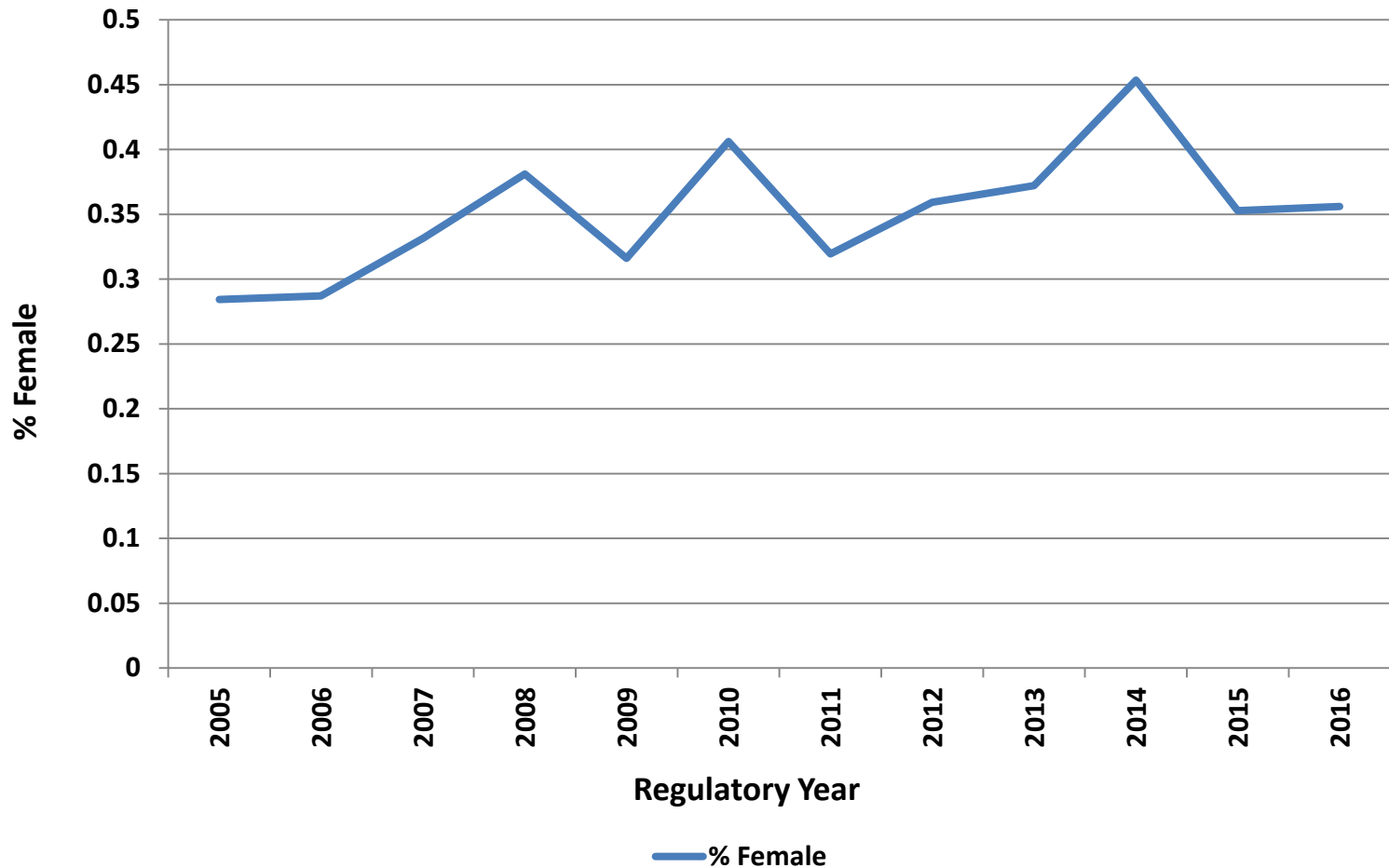
# Unit 16 Black Bear Harvest by Hunt Type, 2000 - 2016

## Unit 16 Black Bear Harvest by Hunt Type 2000 to 2016



# Unit 16 Black Bear Harvest % Female 2005–2016

## Unit 16 Black Bear Harvest % Female 2005 to 2016



# Brown Bear IM Population Objective

- Reduce the population by 60% to 375 bears

Current Population Estimate:

**16B: 625 – 1,250**

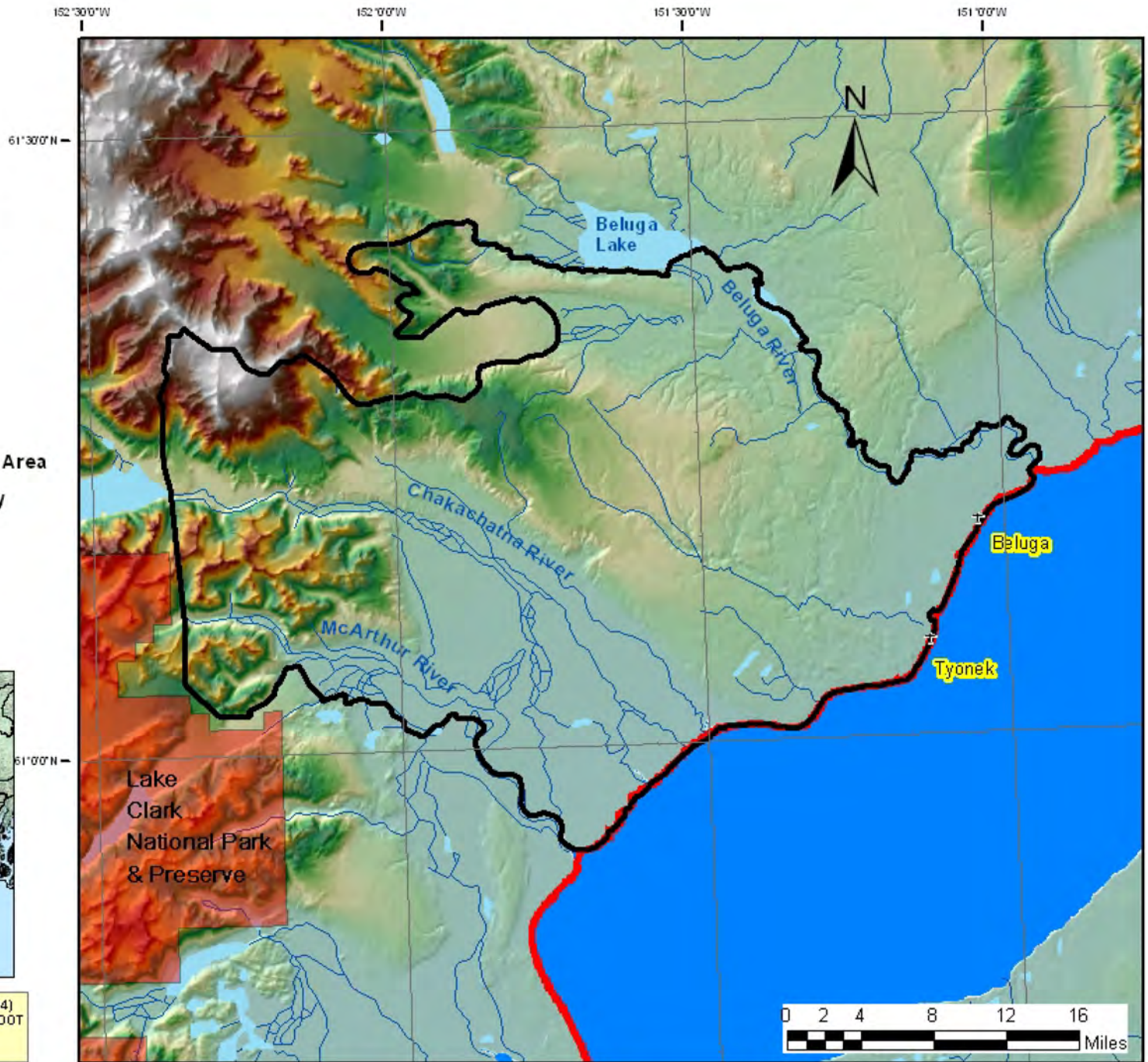
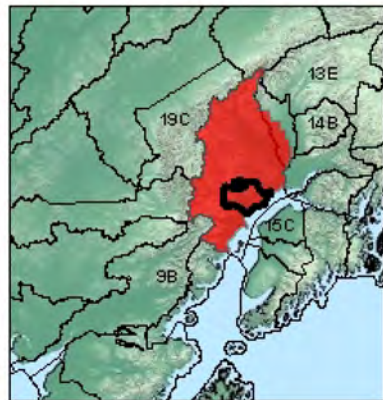




# Brown Bear Control Area GMU 16

## Legend

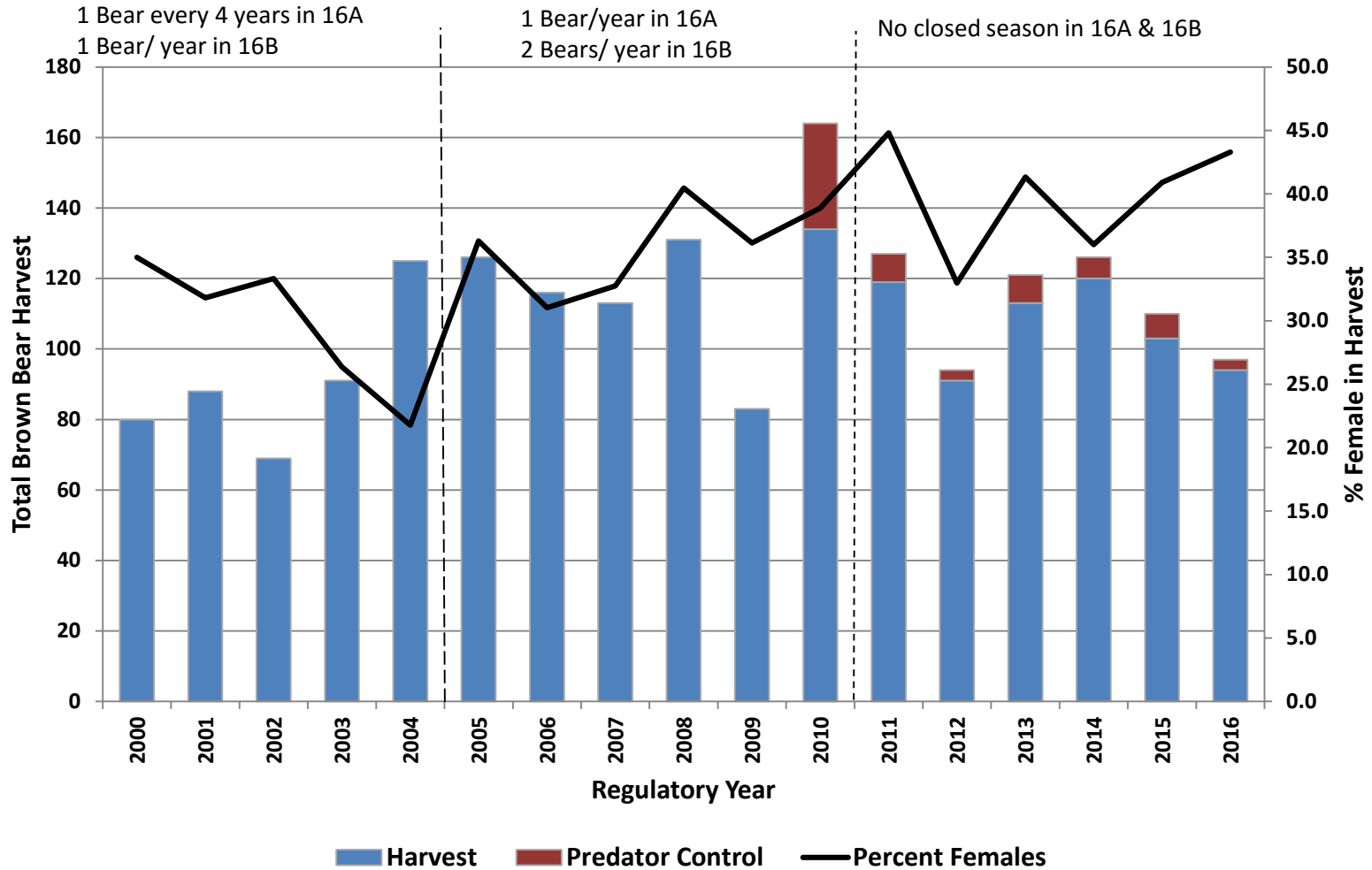
- Brown Bear Removal Area
- Unit 16 PCA boundary
- Closed Federal Land
- Lakes
- Rivers





# Unit 16 Brown Bear Harvest by Permit Type, 2000-2016

## Unit 16 Brown Bear Harvest and % Female by Regulation Type 2000 to 2016



# 16B Moose Population Status

**Estimate: 7,400**

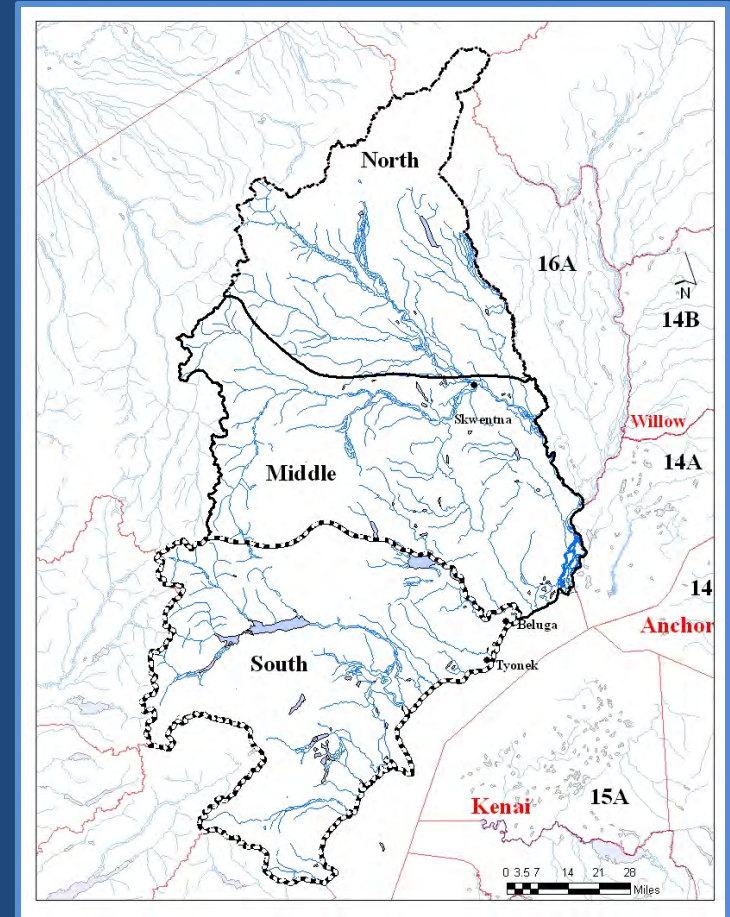
**Calf/100 Cows: 25**

**Bull/100 Cows: 50**

**Harvest Objective: 310-600**

**2016 Harvest: 343**

**Sustainable Harvest: 600-700**



# Moose Population Estimates by Assessment Area

Survey Unit	IM Population Objective proportional to area (midpoint)	2014 Moose Population Estimate	Percent Recovery to Objective Midpoint
16B-North	1,820-2,100 (1,960)	1,587	81%
16B-Middle	3,120-3,600 (3,360)	3,458	103%
16B-South	1,560-1,800 (1,680)	2,372	141%
Unit 16B	6,500-7,500 (7,000)	7,418	106%

