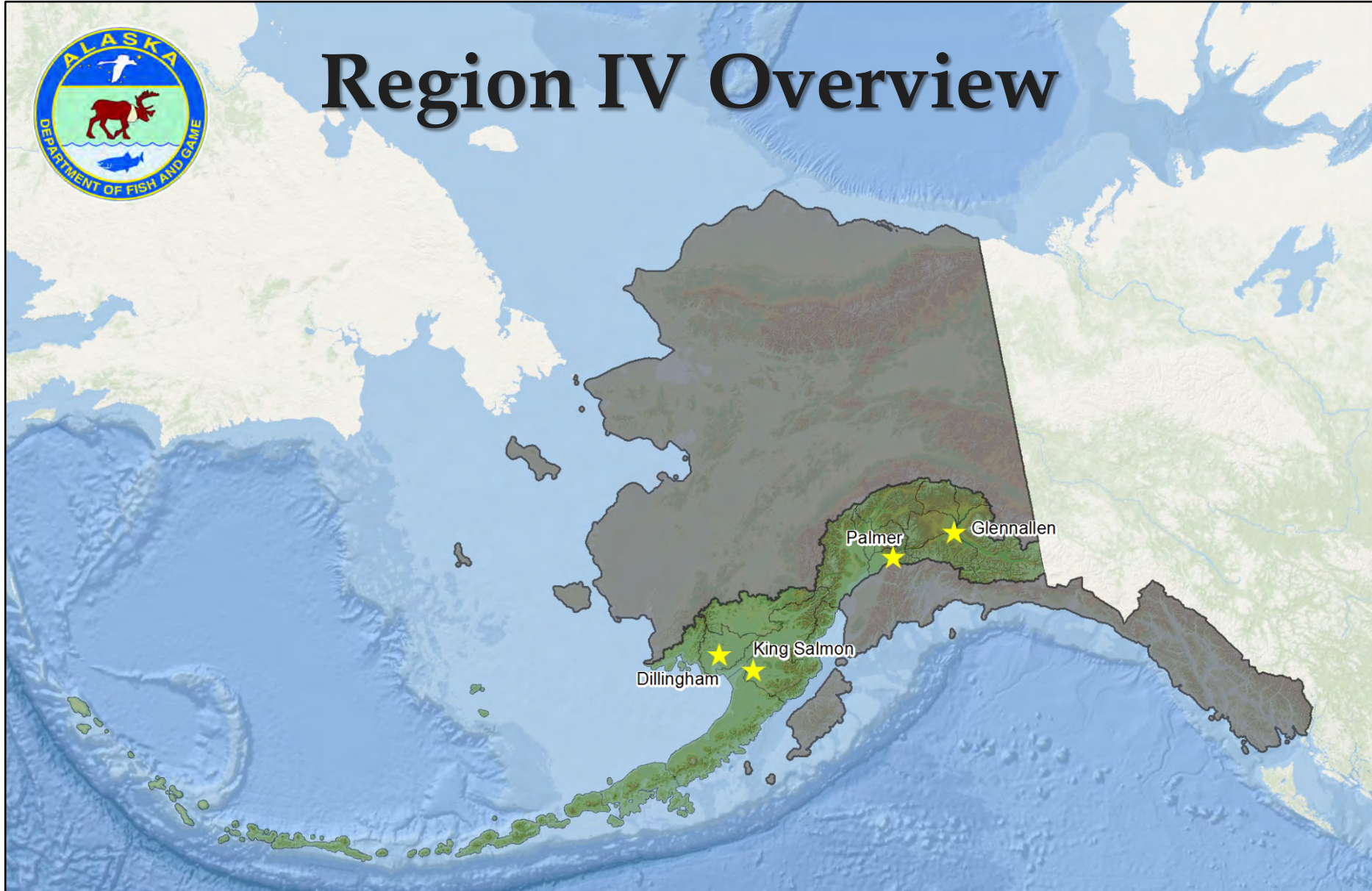




Region IV Overview



Region IV - Central and Southwest

RC 4, Tab 1.1

Regional Staff

- ▣ **Regional Supervisor** **Gino Del Frate**
- ▣ **Mgmt. Coordinator** **Todd Rinaldi**
- ▣ **Research Coordinator** **Michael Guttery**
- ▣ **Special Projects
Coordinator** **Mark Burch**
- ▣
- ▣ **Administrative** **Heather Zepp**
- ▣ **Naomi Johnston**

Challenges and Accomplishments

- ▣ **Intensive Management**
- ▣ **Human Population Growth**
 - **Customer Service**
 - **Social Carrying Capacity**
 - **Habitat Impacts**
 - **Access**
 - **Nuisance Wildlife/highway vehicle accidents**
- ▣ **Research Needs and Opportunities**
- ▣ **Budget**
- ▣ **Operational Planning**

Regional Research Staff

- ▣ **Research Coordinator** **Michael Guttery**
- ▣ **Bear/Wolf** **Nick Demma**
- ▣ **Caribou** **Vacant**
- ▣ **Predator/Prey-Watana** **Kim King Jones**
- ▣ **Moose Physiology** **Bill Collins**
- ▣ **Moose/Furbearers** **Kassidy Colson**
- ▣ **Biometrician** **Megumi Inokuma**

Statewide Programs and Staff in Palmer

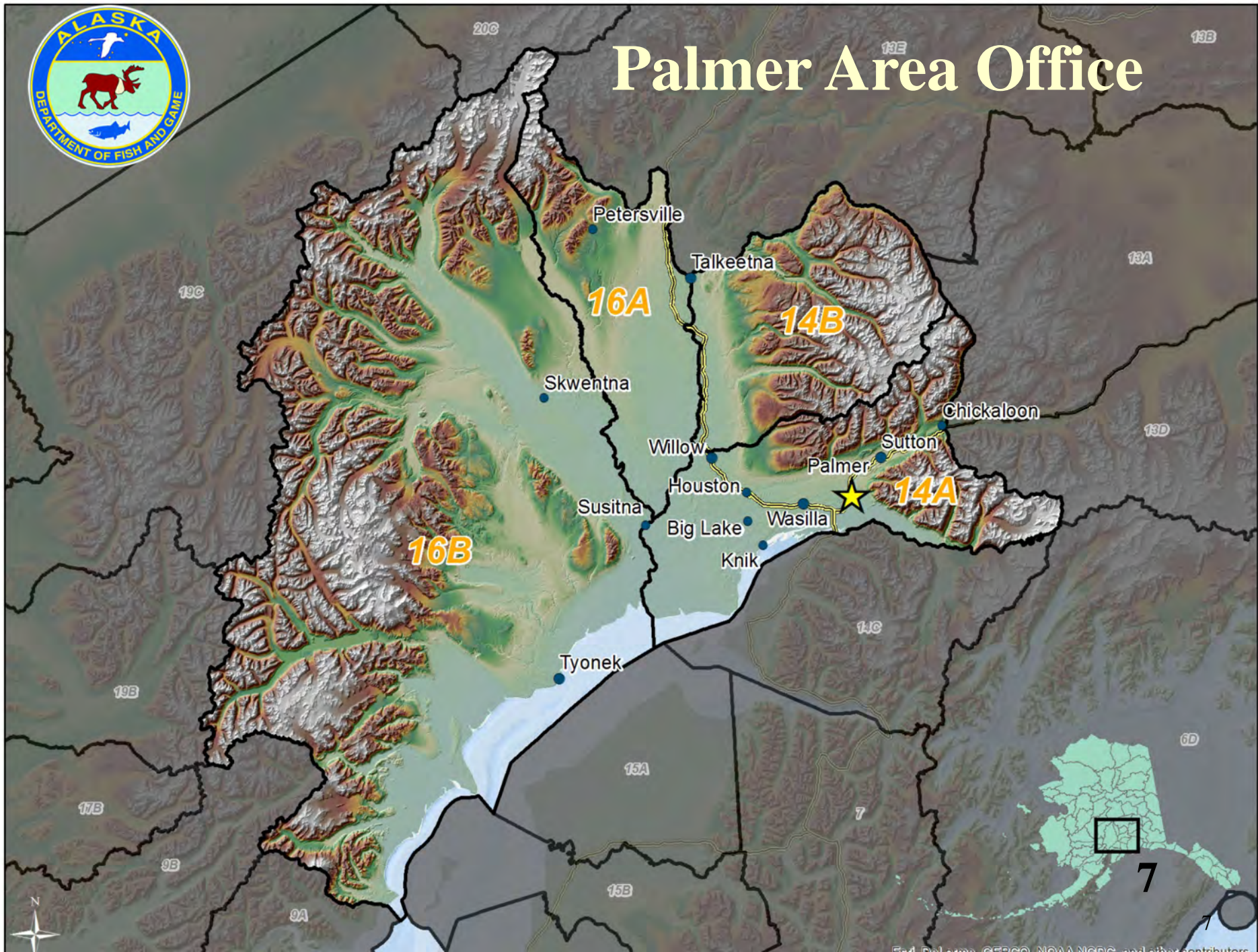
▣ GIS	Miles Spathelf
▣ Small Game	Rick Merizon
▣ Fire/Habitat	Sue Rodman*
▣ Special Areas	Doug Hill
▣ Regulations	Natalie Weber
▣ Regulations Assistant	TBA
▣ Information Services	Kenton Henry
▣ Education	Sierra Doherty
▣ HQ	Tony Kavalok
▣ HQ	Bruce Dale

A photograph of a moose with large, velvet-covered antlers standing in a forest. The forest consists of many birch trees with white bark and some yellowing leaves, suggesting an autumn setting. The moose is positioned in the center-left of the frame, looking towards the camera. A white rectangular box with a thin black border is overlaid on the image, containing the text "IS THIS MOOSE LEGAL?". The word "MOOSE" is highlighted in yellow, while the other words are in white.

IS THIS **MOOSE** LEGAL?



Palmer Area Office



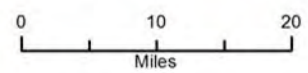
Palmer Area Office Staff

- ▣ **Area Biologist** **Tim Peltier**
- ▣ **Assistant AB** **Chris Brockman**
- ▣ **Regional Biologist** **Joel Holyoak**

- ▣ **Information Center**
- ▣ **Supervisor** **Leigh Honig**
- ▣ **F&W Technician** **Tara Moskiewicz**
- ▣ **F&W Technician** **Nick Jensen**
- ▣ **F&W Technician** **Keely Wahl**

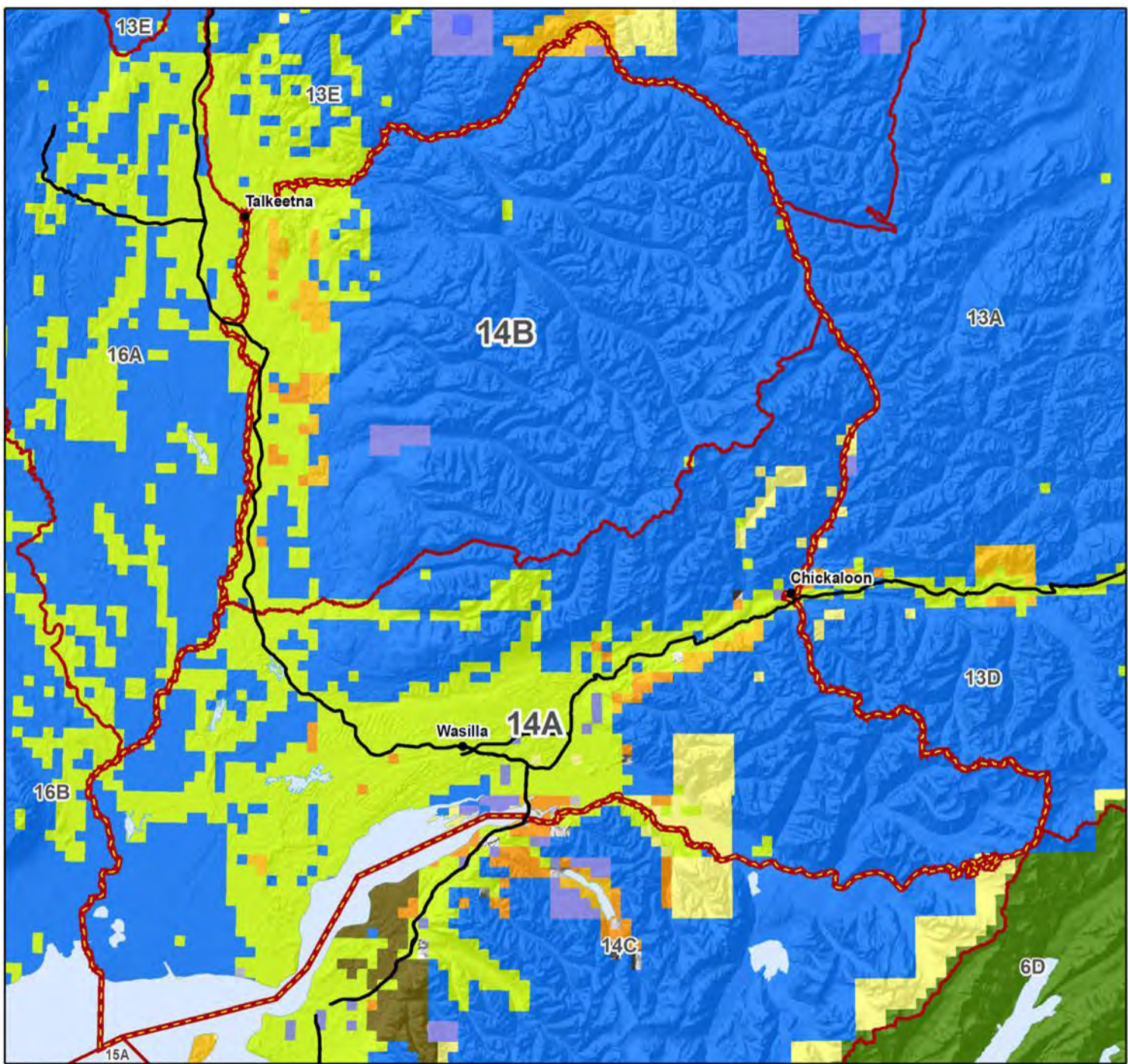
Unit 14AB General Land Status

-  Major Road
-  GMU
-  Subunit
-  Forest Service
-  Bureau of Land Management
-  Major Military
-  Native Patent or IC
-  Native Selected
-  Other/Private
-  State Patent
-  State Selected
-  Water



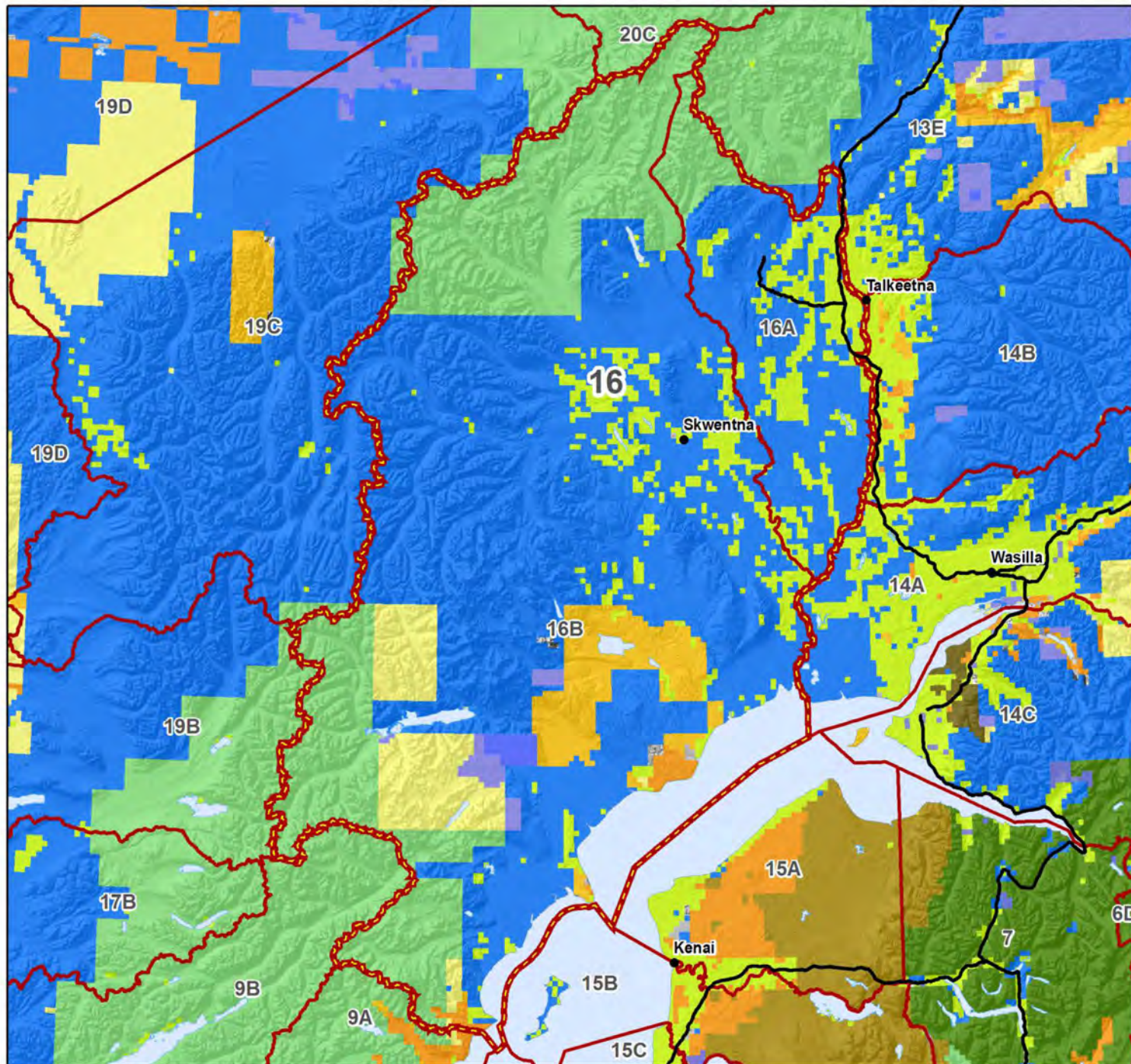
ADNR General Land Status
BLM General Land Status

NAD 1983 Alaska Albers Equal Area Projection

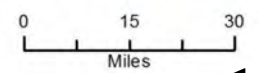


U:\wci\LandStatus_Region\14AB.mxd 1/22/2018 sst

Unit 16 General Land Status



- Major Road
- GMU
- Subunit
- Forest Service
- National Park Service
- Fish & Wildlife Service
- Bureau of Land Management
- Major Military
- Native Patent or IC
- Native Selected
- Other/Private
- State Patent
- State Selected
- Water



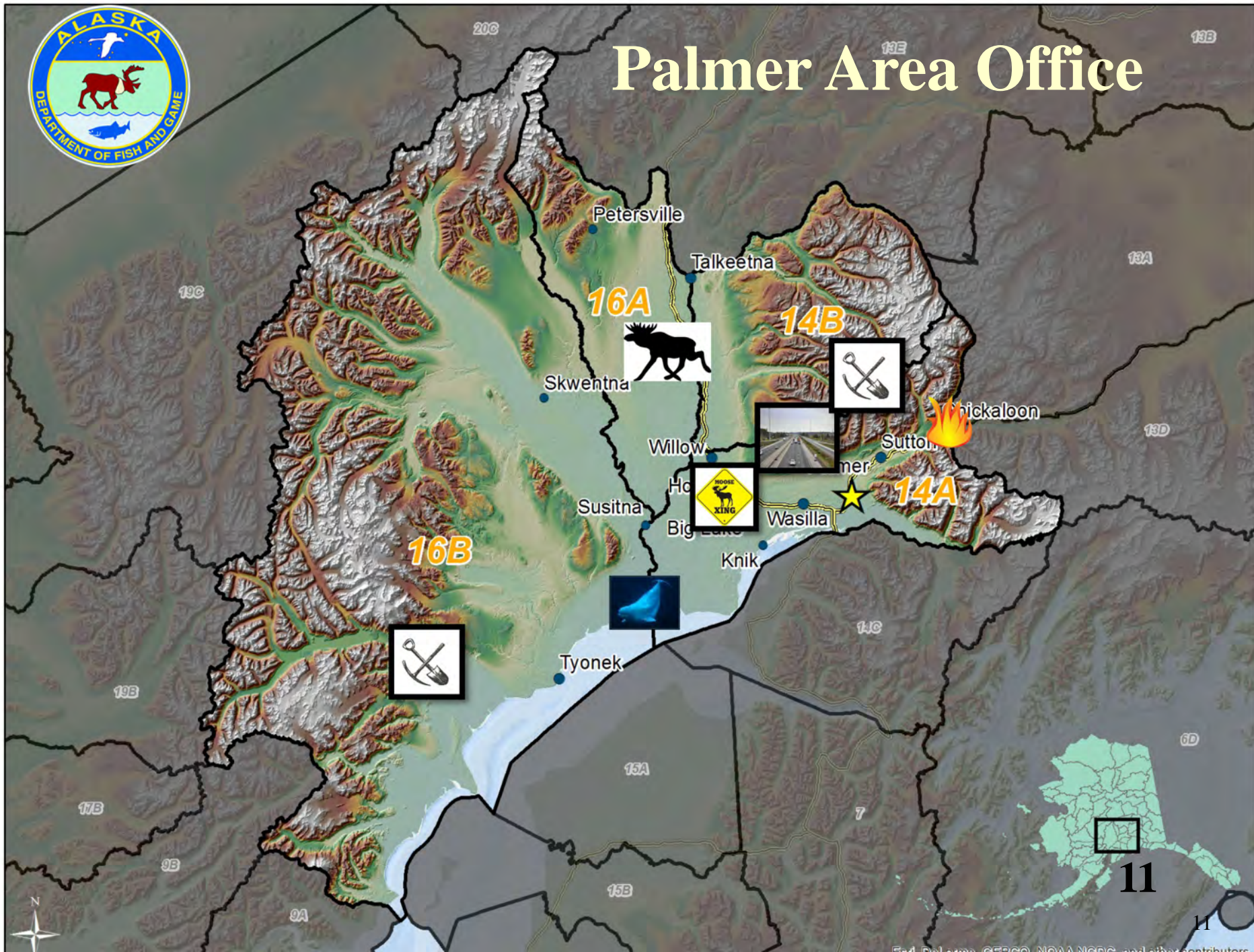
10

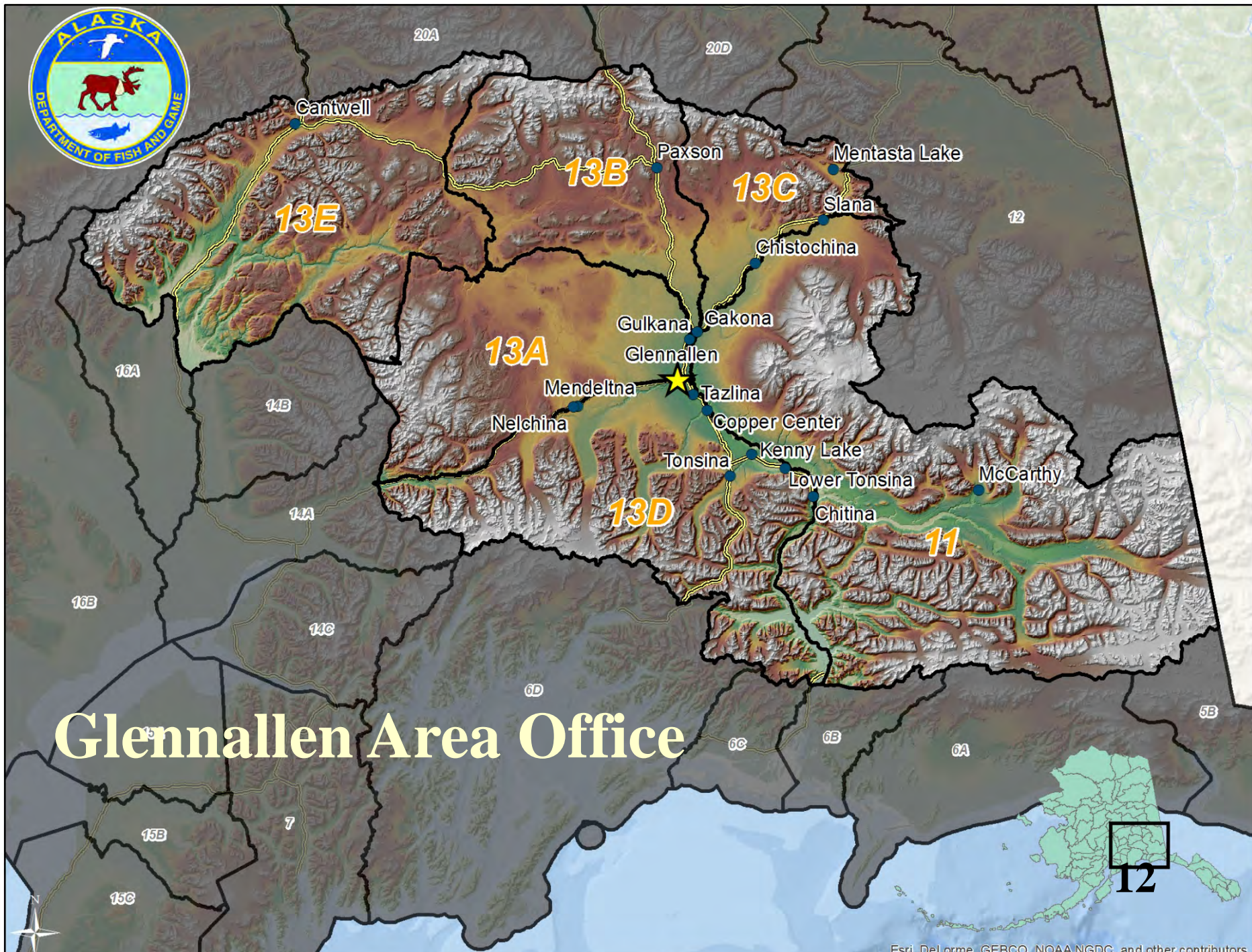
ADNR General Land Status
BLM General Land Status

NAD 1983 Alaska Albers Equal Area Projection



Palmer Area Office





Glennallen Area Office

Glennallen Area Office Staff

▣ **Area Biologist**

Frank Robbins

▣ **Assistant AB**

Heidi Hatcher

▣ **Technician**

Shawn Conway

▣ **Information Center**

Lauren Dascanio

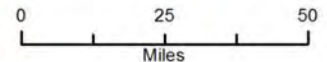
▣

▣

▣

Unit 13 General Land Status

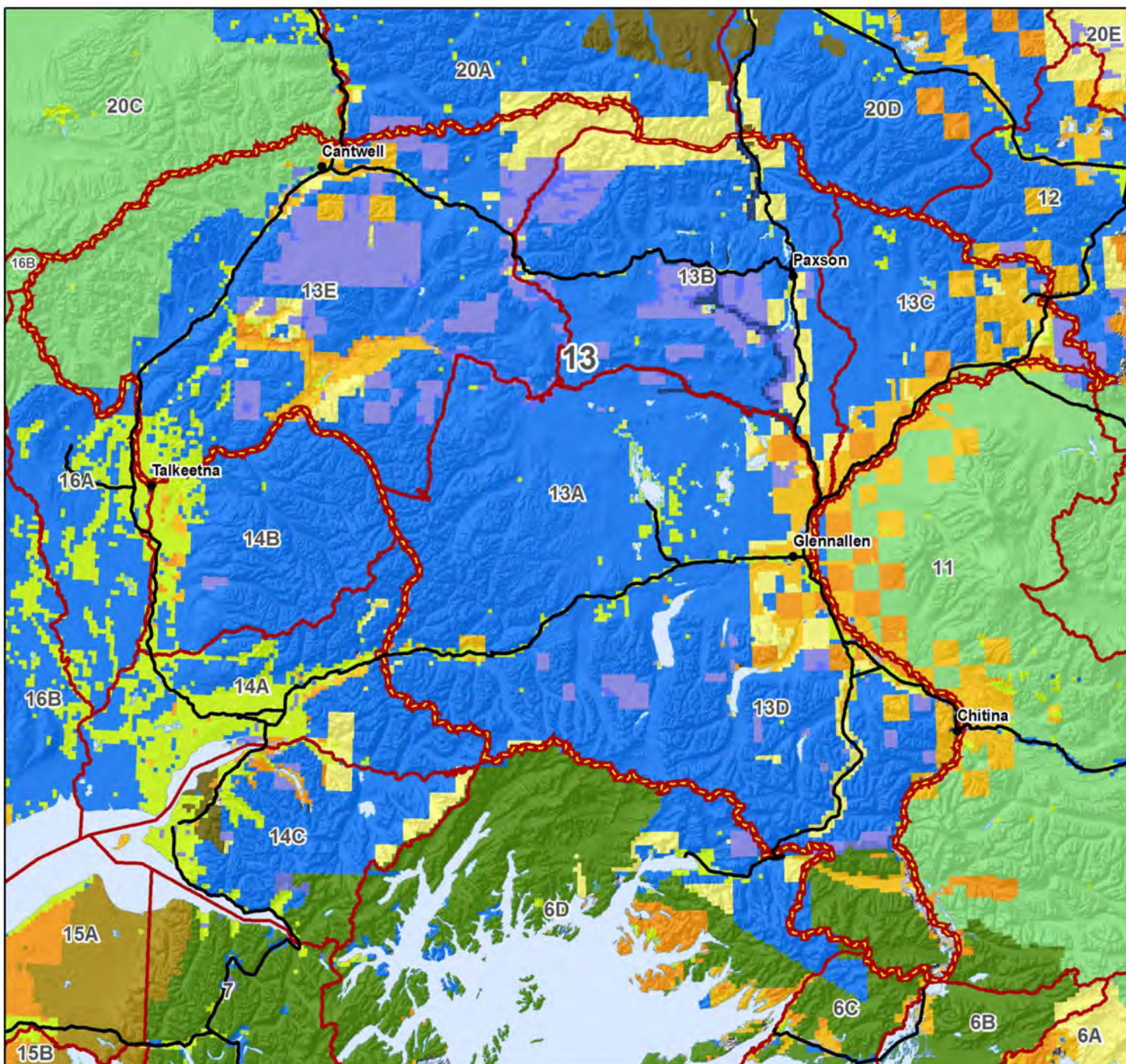
-  Major Road
-  GMU
-  Subunit
-  State Selected
-  Forest Service
-  National Park Service
-  Fish & Wildlife Service
-  Bureau of Land Management
-  Wild & Scenic River
-  Major Military
-  Native Patent or IC
-  Native Selected
-  Other/Private
-  State Patent
-  Water



14

ADNR General Land Status
BLM General Land Status

NAD 1983 Alaska Albers Equal Area Projection

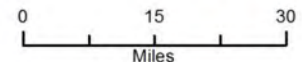


U:\wcl\LandStatus_Region13.mxd 1/23/2016 sdt

Unit 11 General Land Status

-  Major Road
-  GMU
-  Subunit
-  Forest Service
-  National Park Service
-  Fish & Wildlife Service
-  Bureau of Land Management
-  Wild & Scenic River
-  Native Patent or IC
-  Native Selected
-  Other/Private
-  State Patent
-  State Selected
-  Water

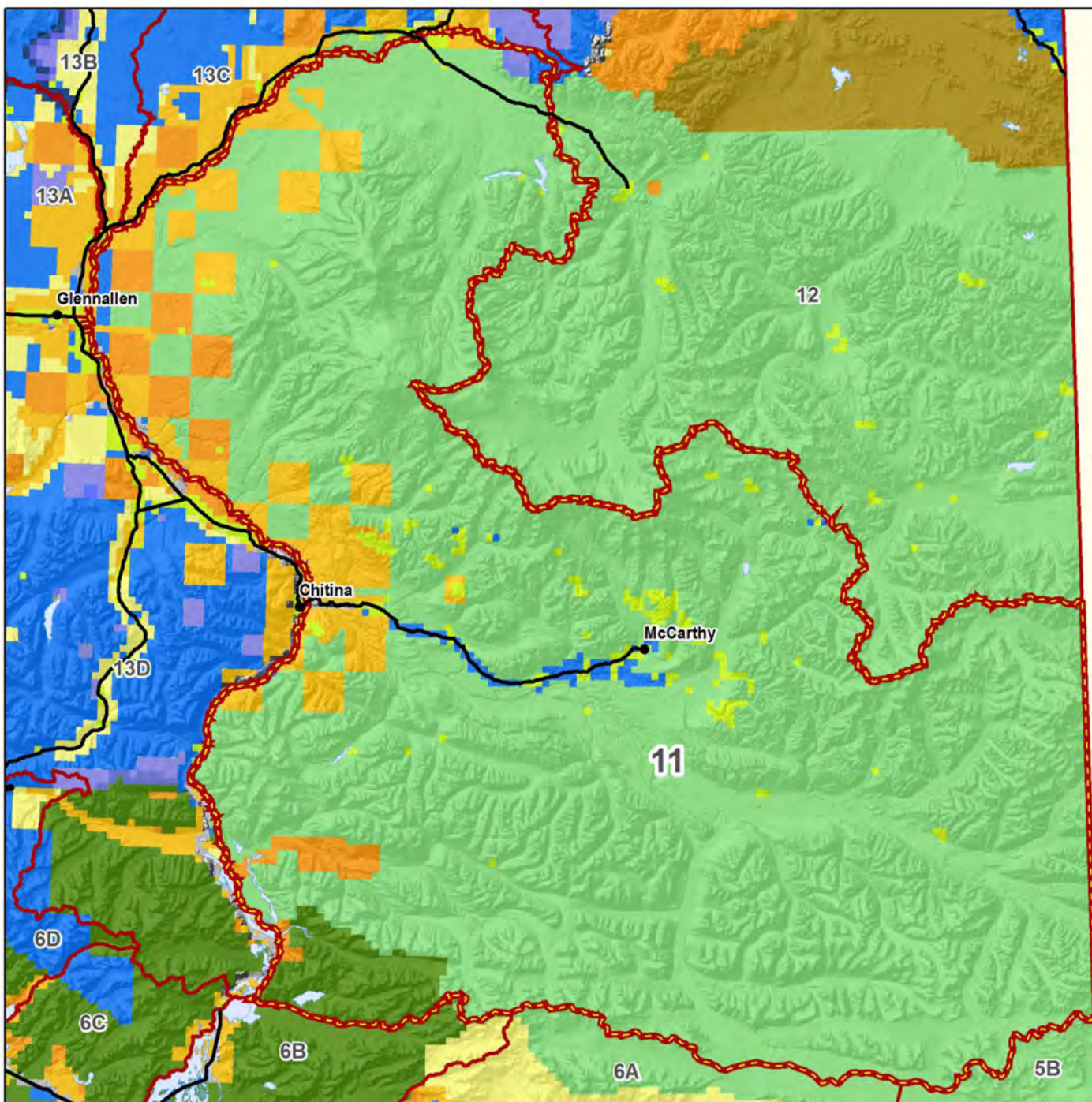
C
A
N
A
D
A

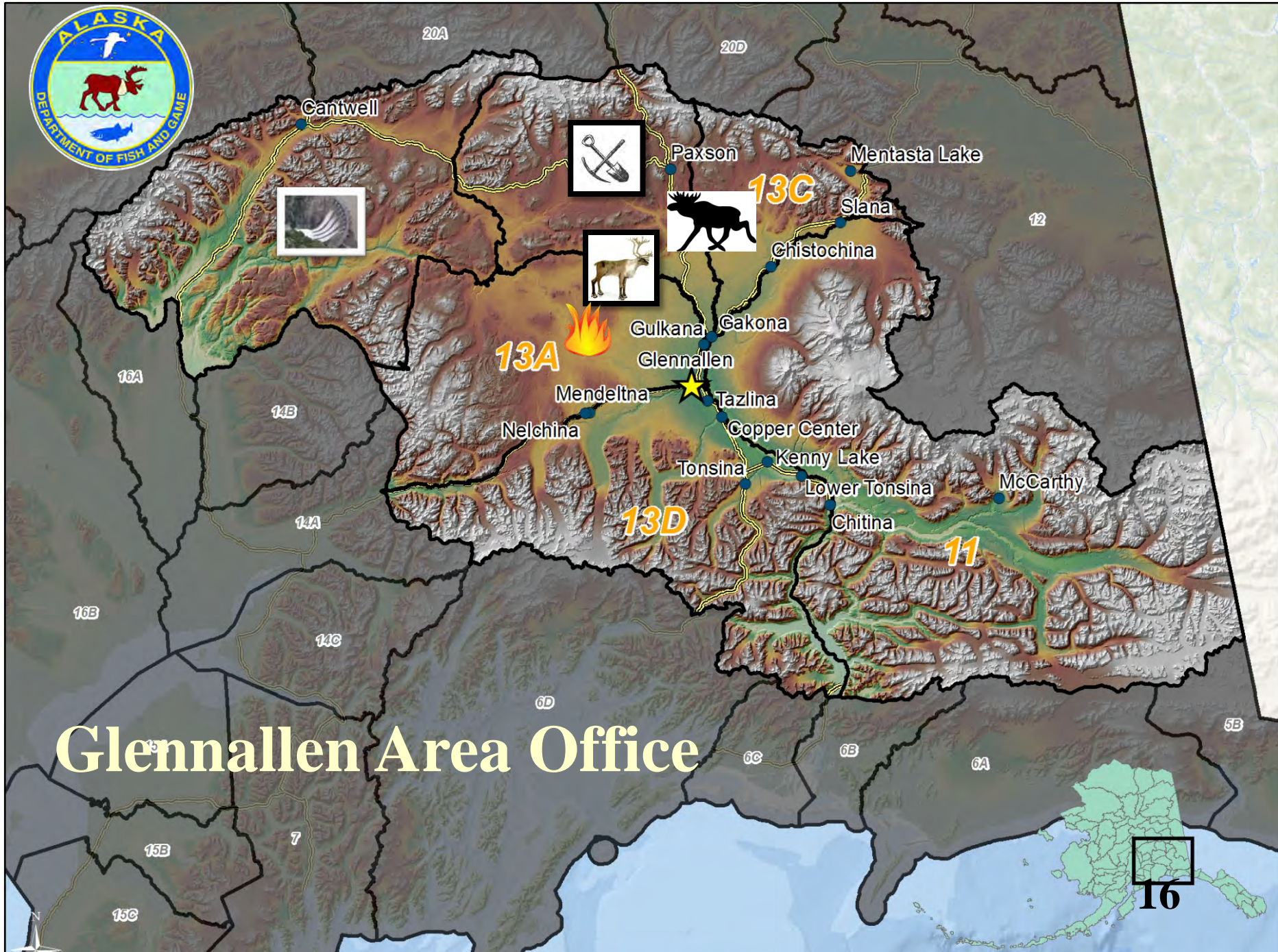


15

ADNR General Land Status
BLM General Land Status

NAD 1983 Alaska Albers Equal Area Projection

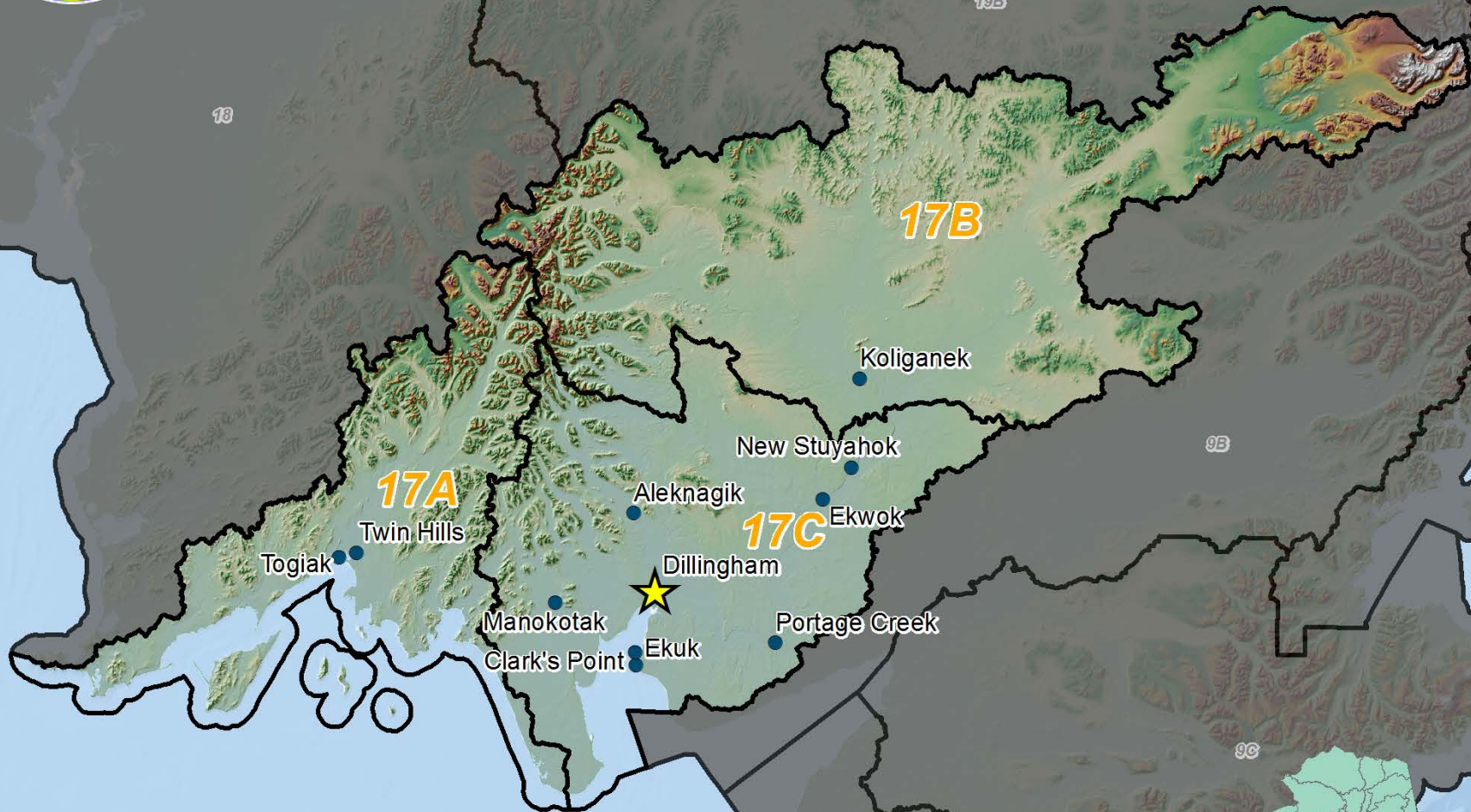




Glennallen Area Office



Dillingham Area Office



17

Dillingham Area Office Staff

▣ **Area Biologist**

Neil Barten

▣ **Assistant AB**

Chris Peterson

▣

▣ **Information Center**

Eunice Dyasuk

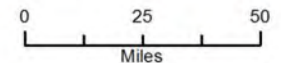
▣

▣

▣

Unit 17 General Land Status

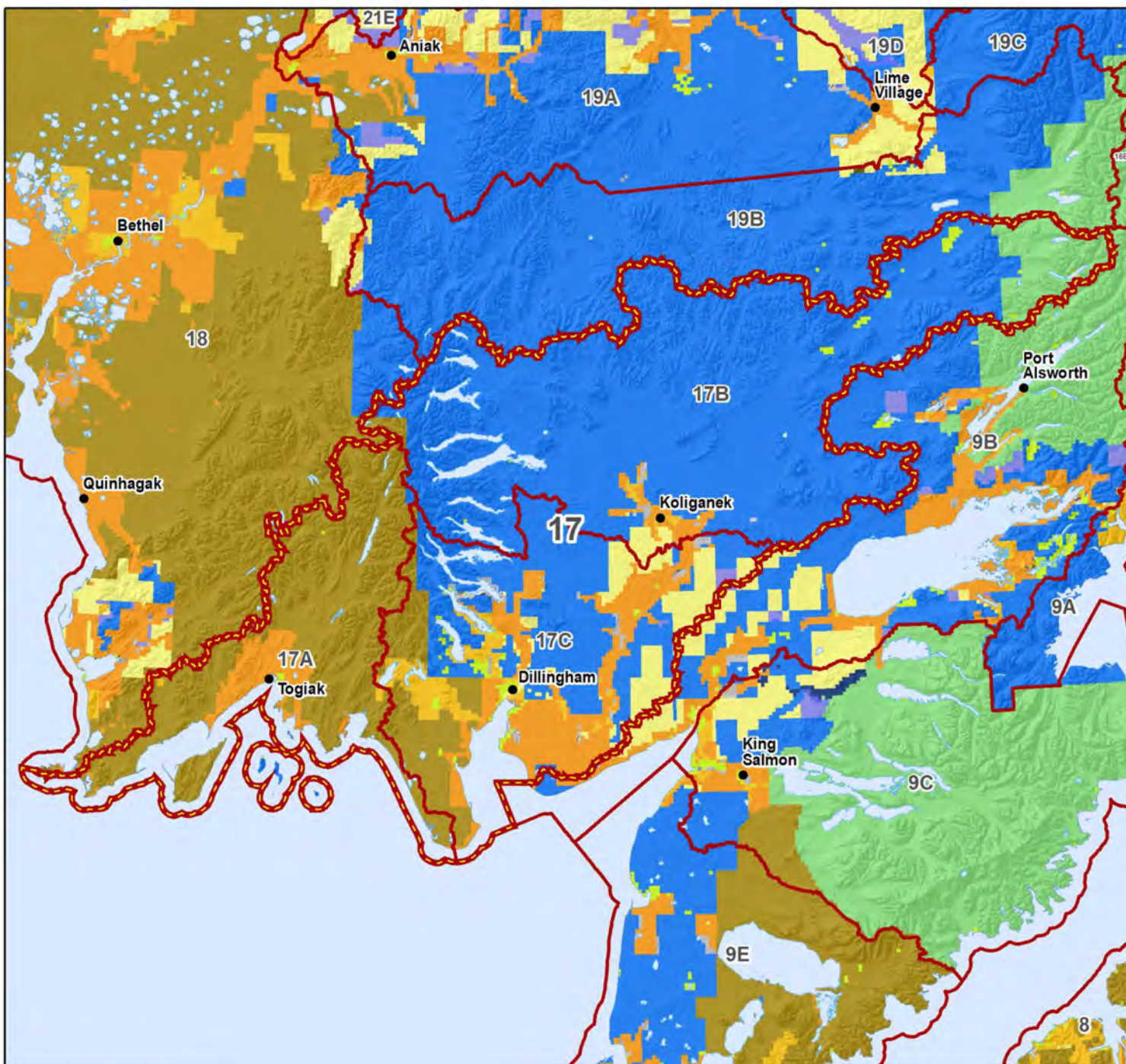
-  GMU
-  Subunit
-  State Selected
-  National Park Service
-  Fish & Wildlife Service
-  Bureau of Land Management
-  Wild & Scenic River
-  Major Military
-  Native Patent or IC
-  Native Selected
-  Other/Private
-  State Patent
-  Water

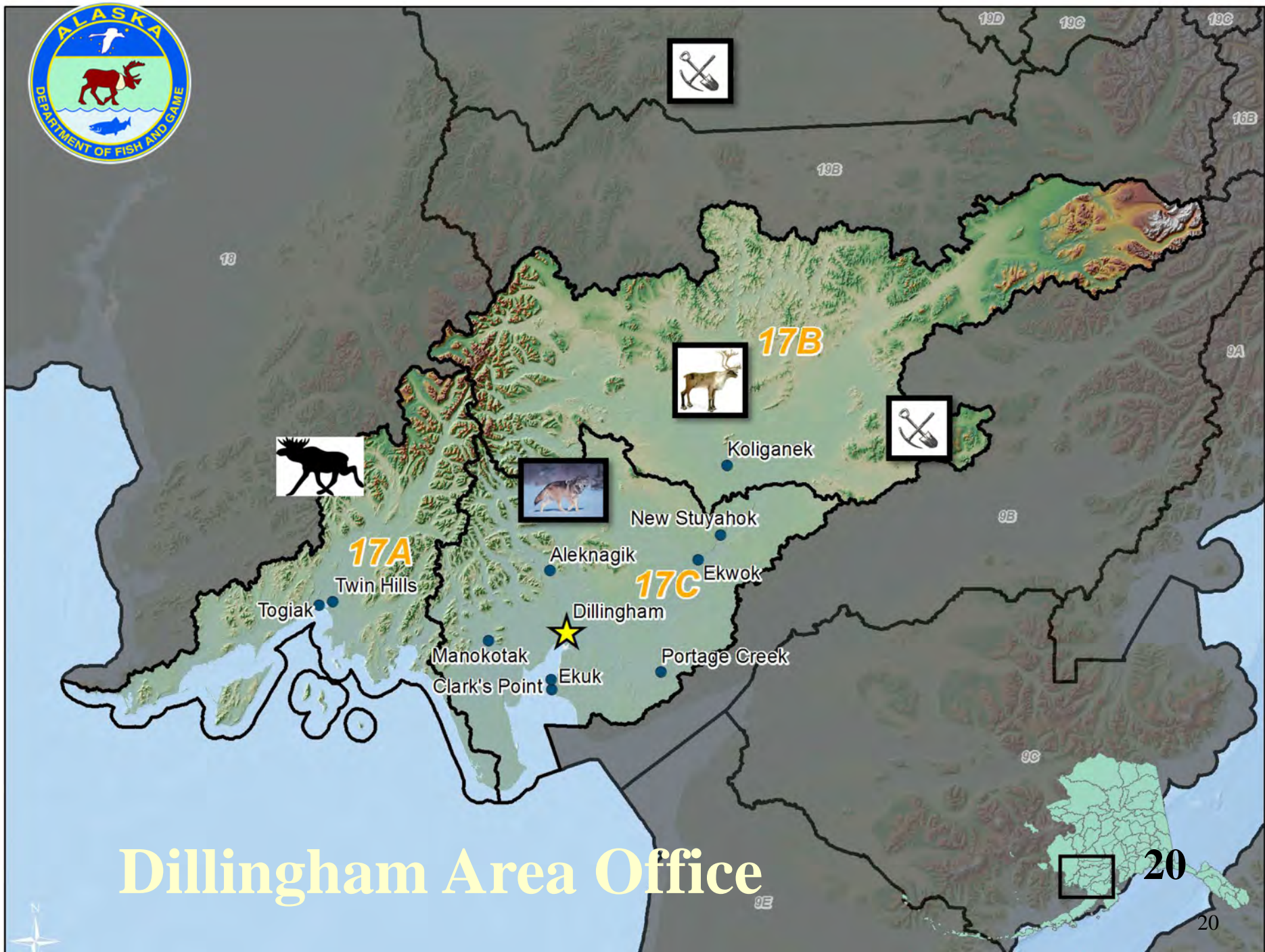


19

ADNR General Land Status
BLM General Land Status

NAD 1983 Alaska Albers Equal Area Projection



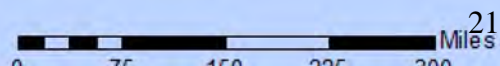
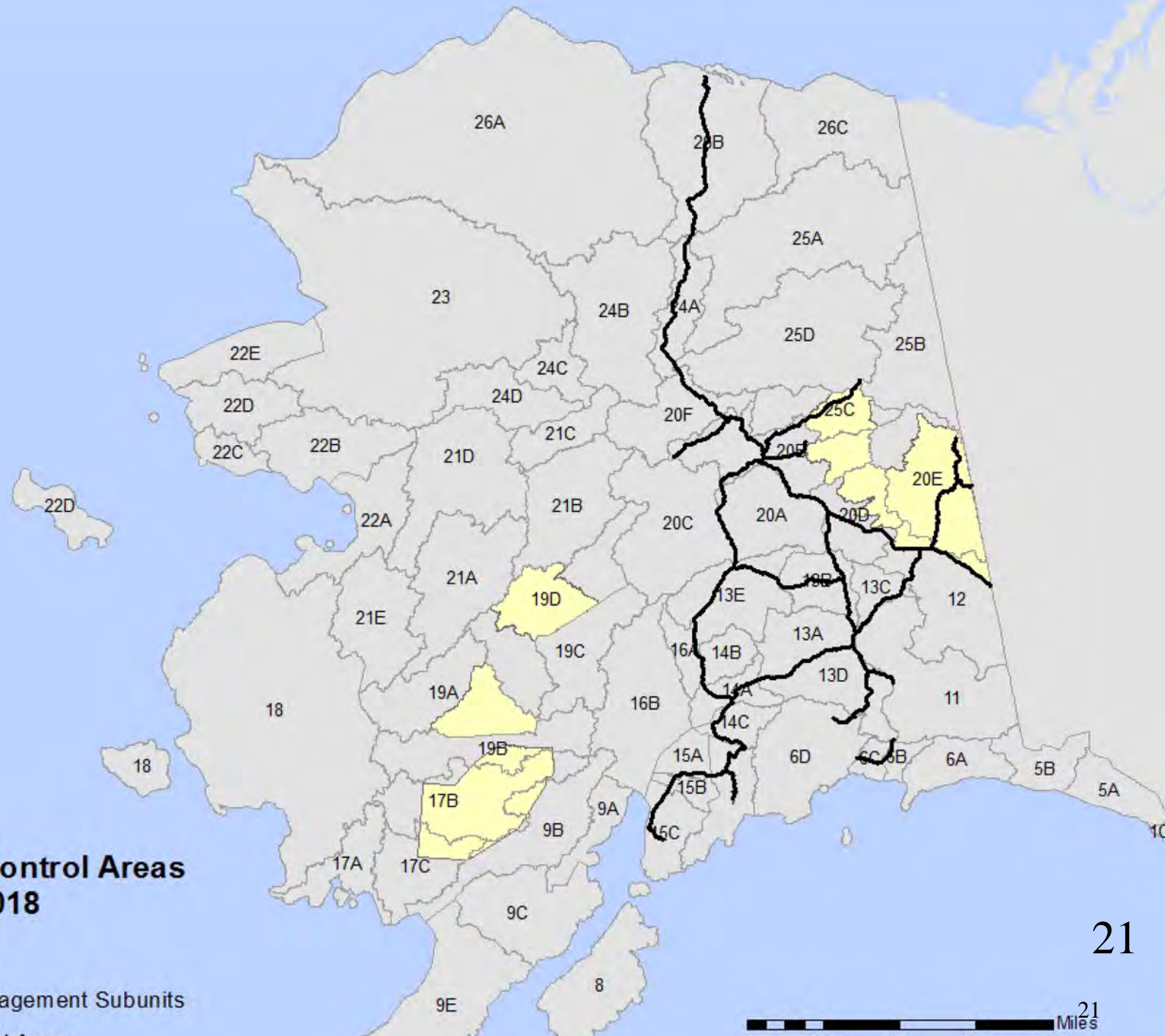


Dillingham Area Office

20

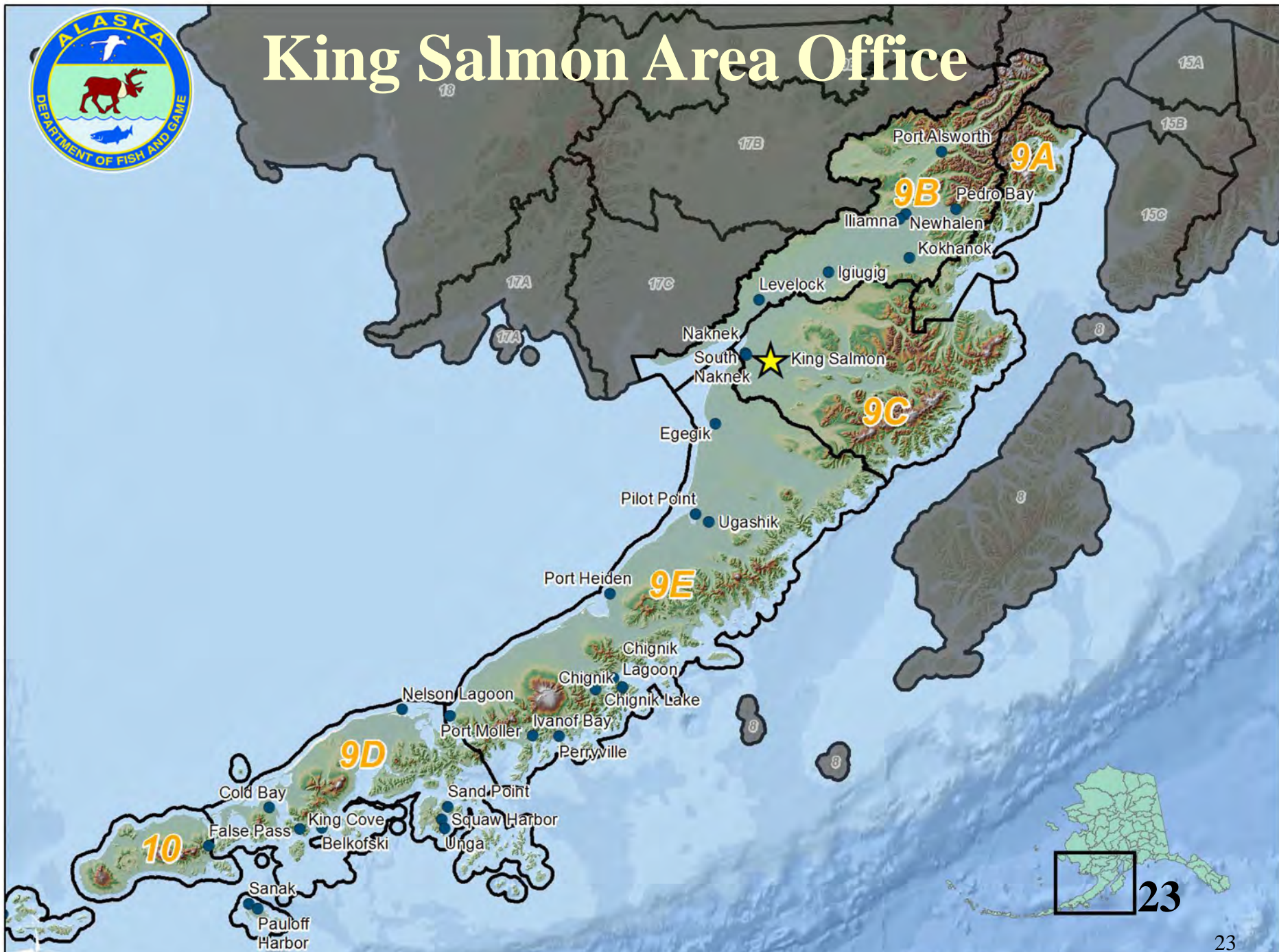
Active Wolf Control Areas 10 January 2018

- Highways
- Game Management Subunits
- Wolf Control Areas





King Salmon Area Office



King Salmon Area Office Staff

▣ **Area Biologist**

Dave Crowley

▣ **Assistant AB**

Chris Peterson

▣

▣ **Information Center**

Monette Schwoerer

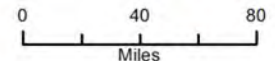
▣

▣

▣

Unit 9 General Land Status

-  Major Road
-  GMU
-  National Park Service
-  Fish & Wildlife Service
-  Bureau of Land Management
-  Wild & Scenic River
-  Major Military
-  Native Patent or IC
-  Native Selected
-  Other/Private
-  State Patent
-  State Selected
-  Water

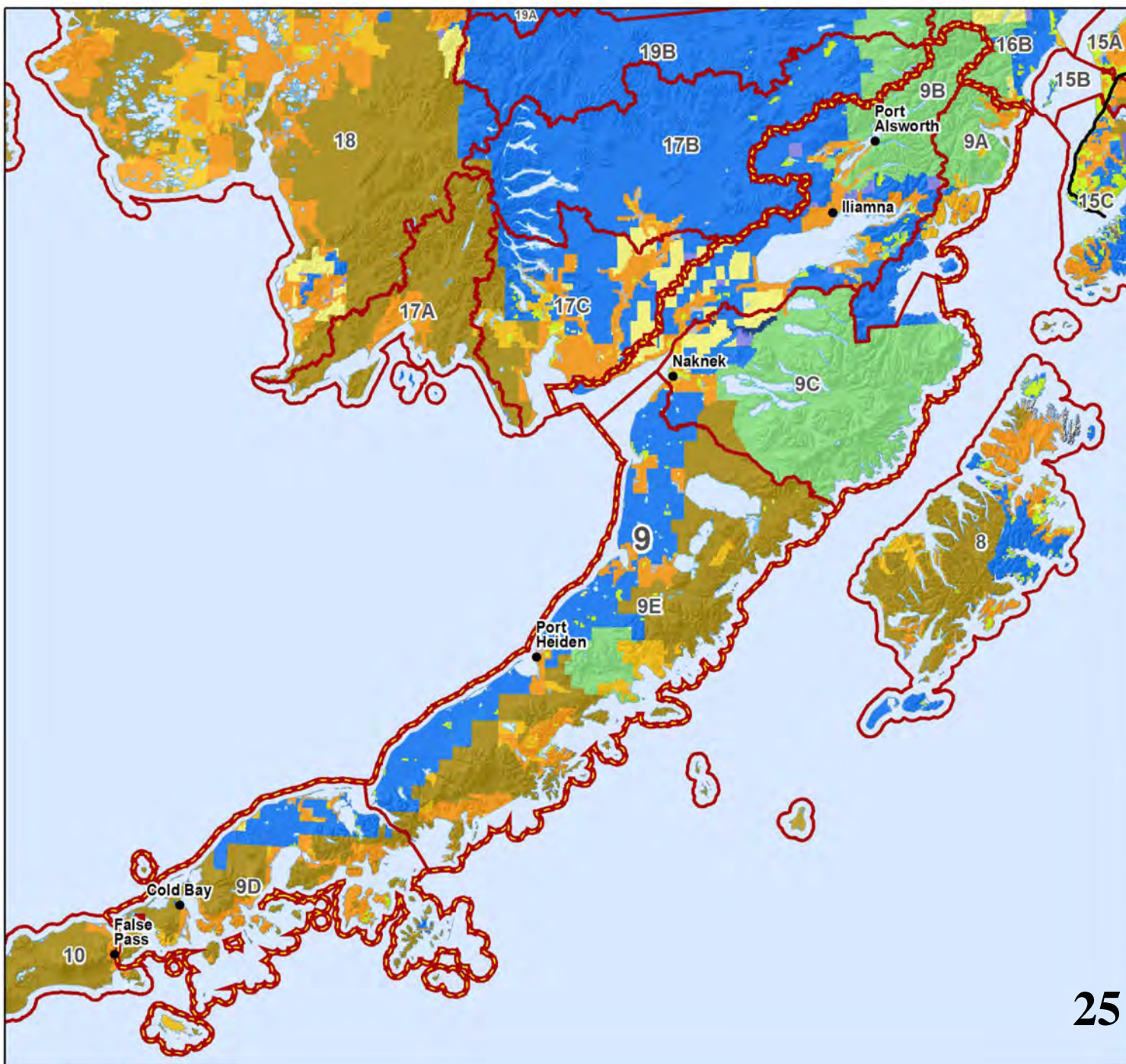


25

25

ADNR General Land Status
BLM General Land Status

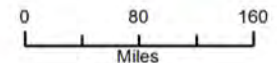
NAD 1983 Alaska Albers Equal Area Projection



U:\wcl\LandStatus_Region0.mxd 1/23/2018 skl

Unit 10 General Land Status

-  GMU
-  Subunit
-  Fish & Wildlife Service
-  Bureau of Land Management
-  Major Military
-  Native Patent or IC
-  Native Selected
-  Other/Private
-  State Patent
-  State Selected
-  Water

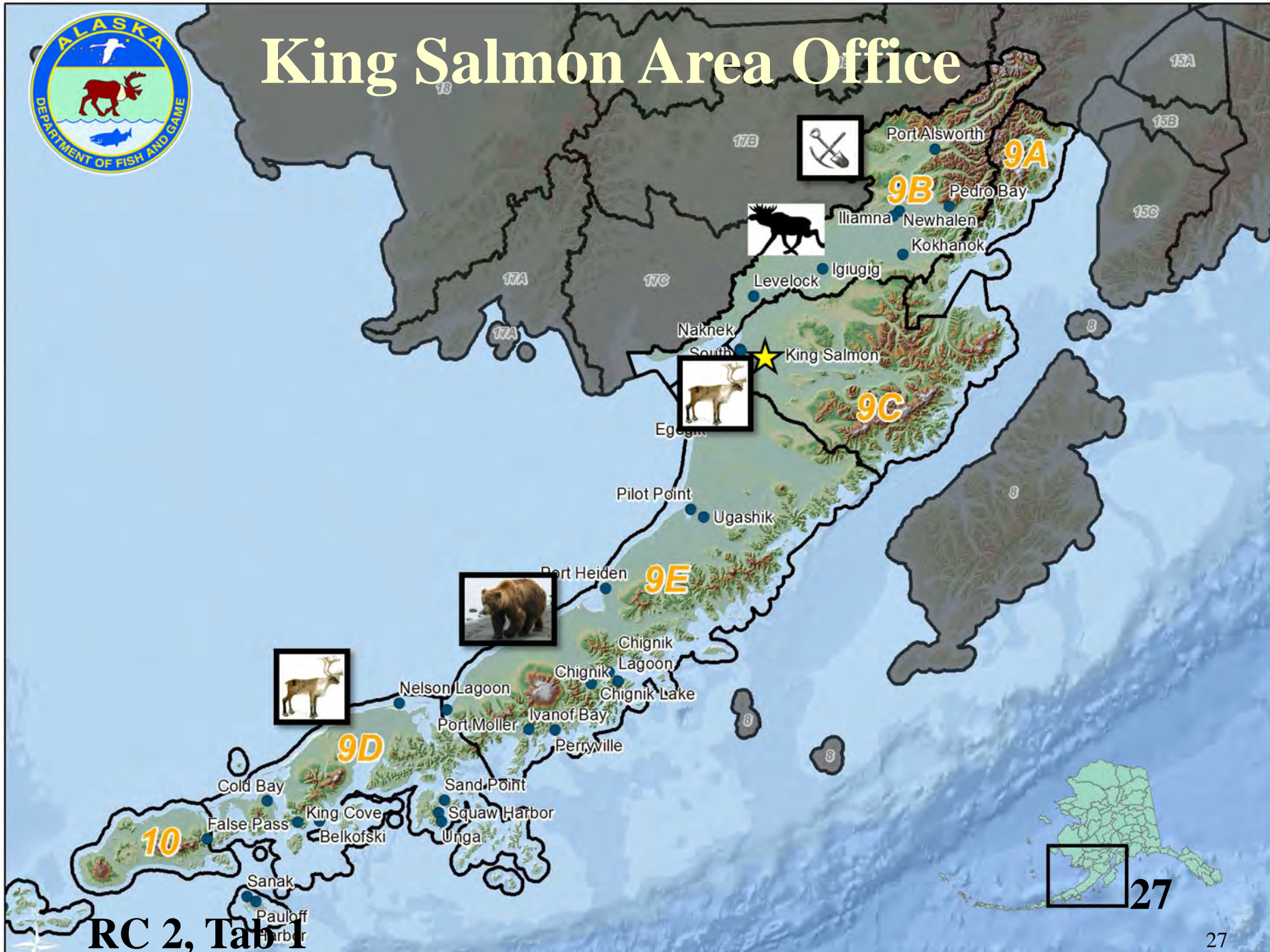


26

U:\wci\LandStatus_Region\10.mxd 1/22/2016 akc



King Salmon Area Office



RC 2, Tab 1



King Salmon Area Office



Questions?

