

Reauthorize the Antlerless Moose Seasons in Unit 23

Recommendation: OPPOSE

*We recommend an amendment to an “antlered bull”
season*

Department Proposal

<i>Kotzebue Sound AC</i>	<i>Support (5-0)</i>	<i>Northern Seward Peninsula AC</i>	<i>Support (4-0)</i>
<i>Noatak Kivalina AC</i>	<i>Dec 22</i>		
<i>Lower Kobuk AC</i>	<i>Dec 21</i>		
<i>Upper Kobuk AC</i>	<i>Support (5-0)</i>		

Unit 23 Antlerless Moose

Current Season: Nov 1 – Dec 31
One Moose – no calves or cows with calves

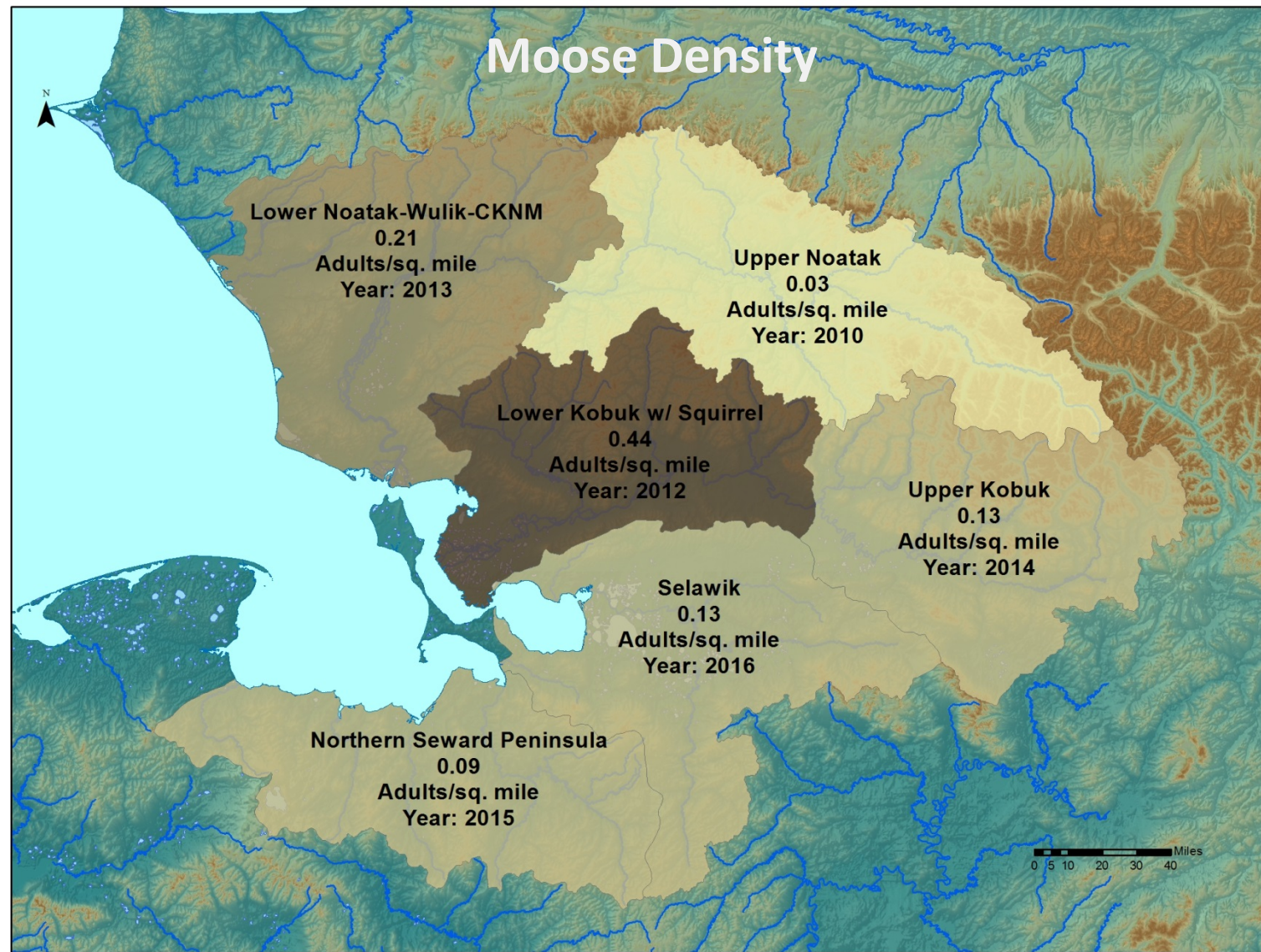
Proposed Season: Nov 1 – Dec 31
One Bull (antlered)

- Antlerless moose must season must be reauthorized annually
- RM880 was implemented in 2004 to retain antlerless

Harvest

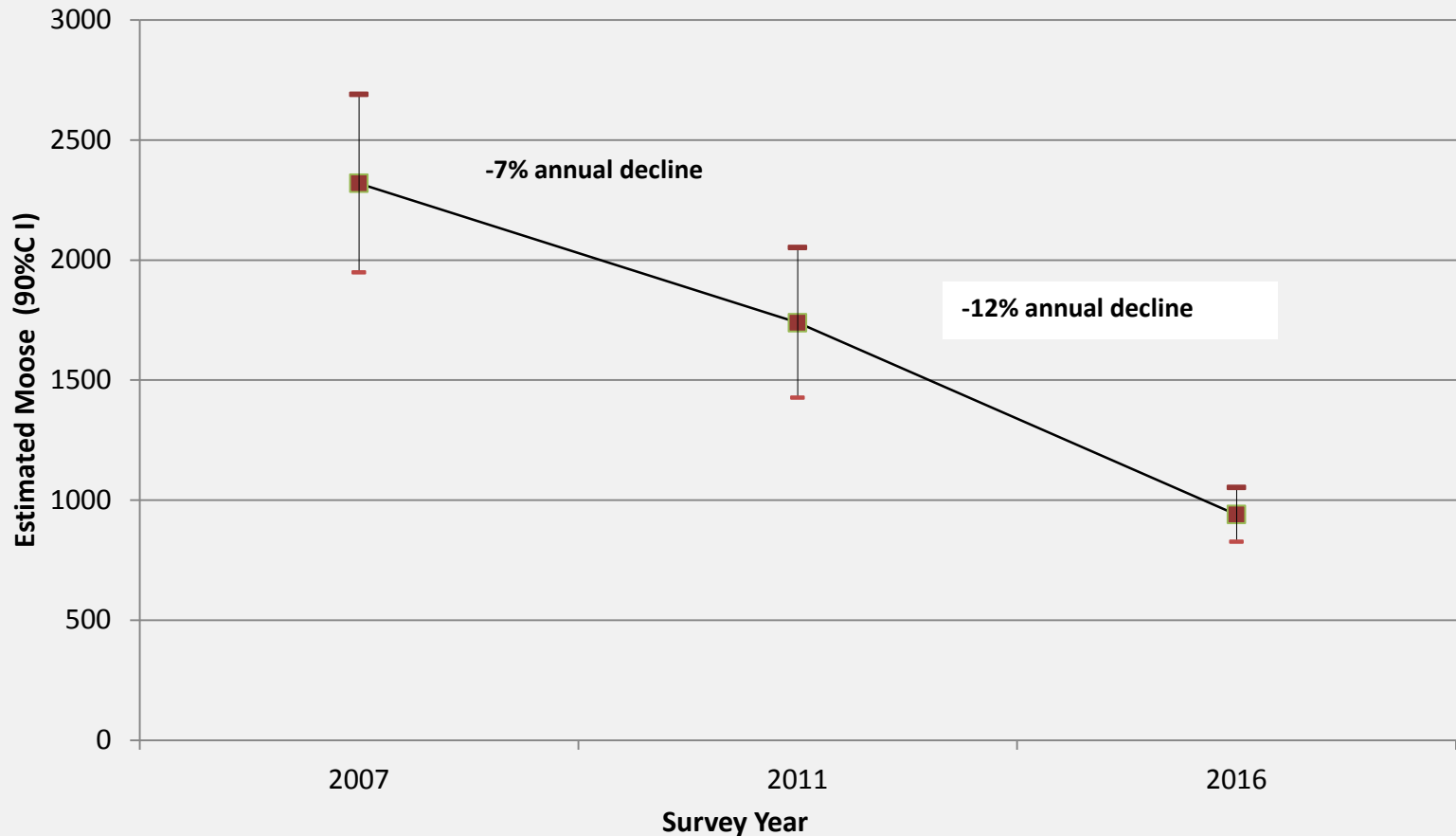
- Current Regulations
 - General Moose Hunt
 - RM880
 - DM871-877
- Harvest Objective 210-920 moose
- ANS 325-400 moose







Selawik Spring Moose Population Estimates



IM Population objective: 3,500-9,200

Population Estimate: 7,500

Harvest objective: 210-552 (6%)

Harvestable surplus: 450

Harvest: 274 (150 reported)

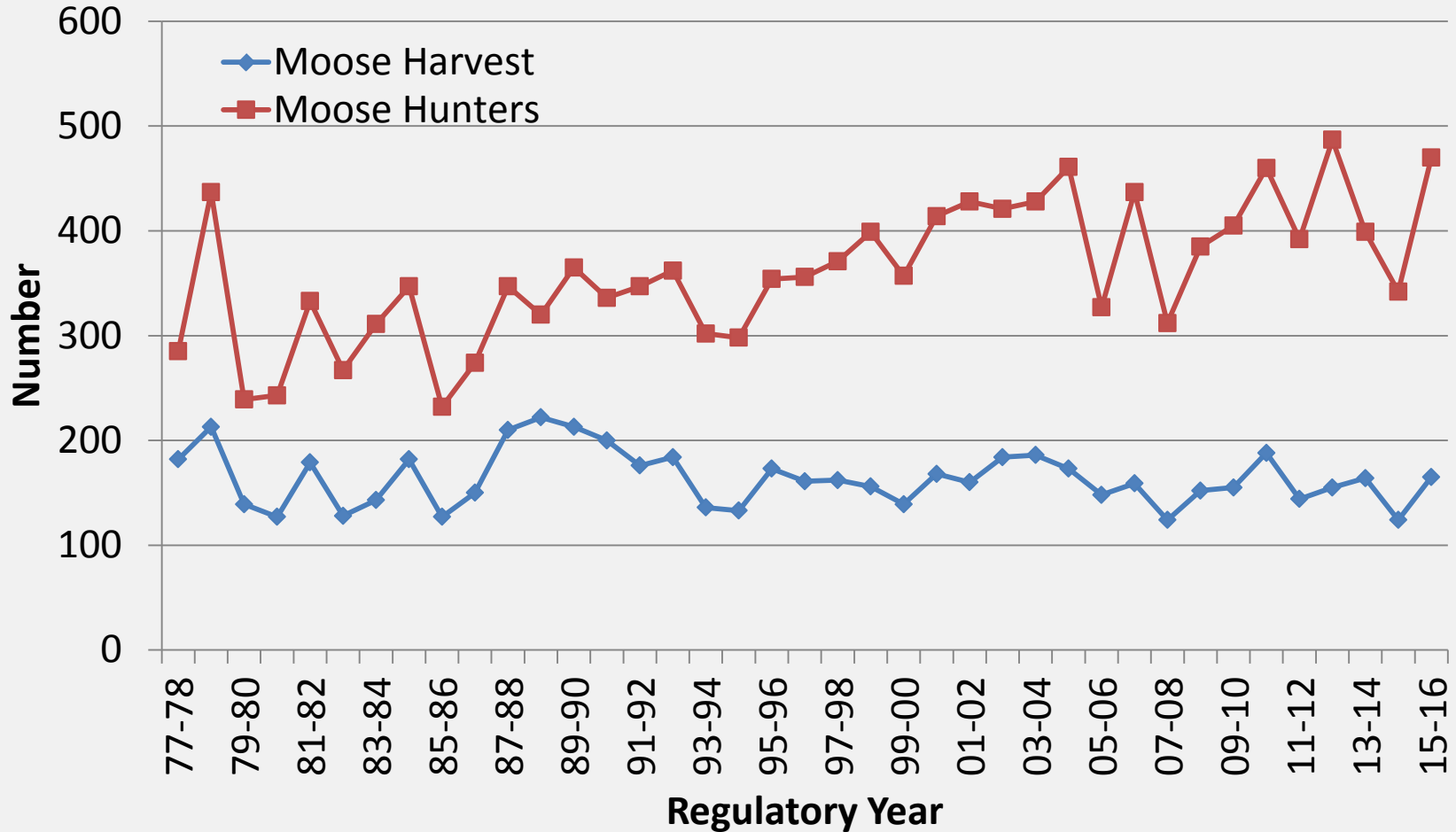
Declining Trend projected to un-surveyed areas:

Projected Population Estimate: 5,500-7,000

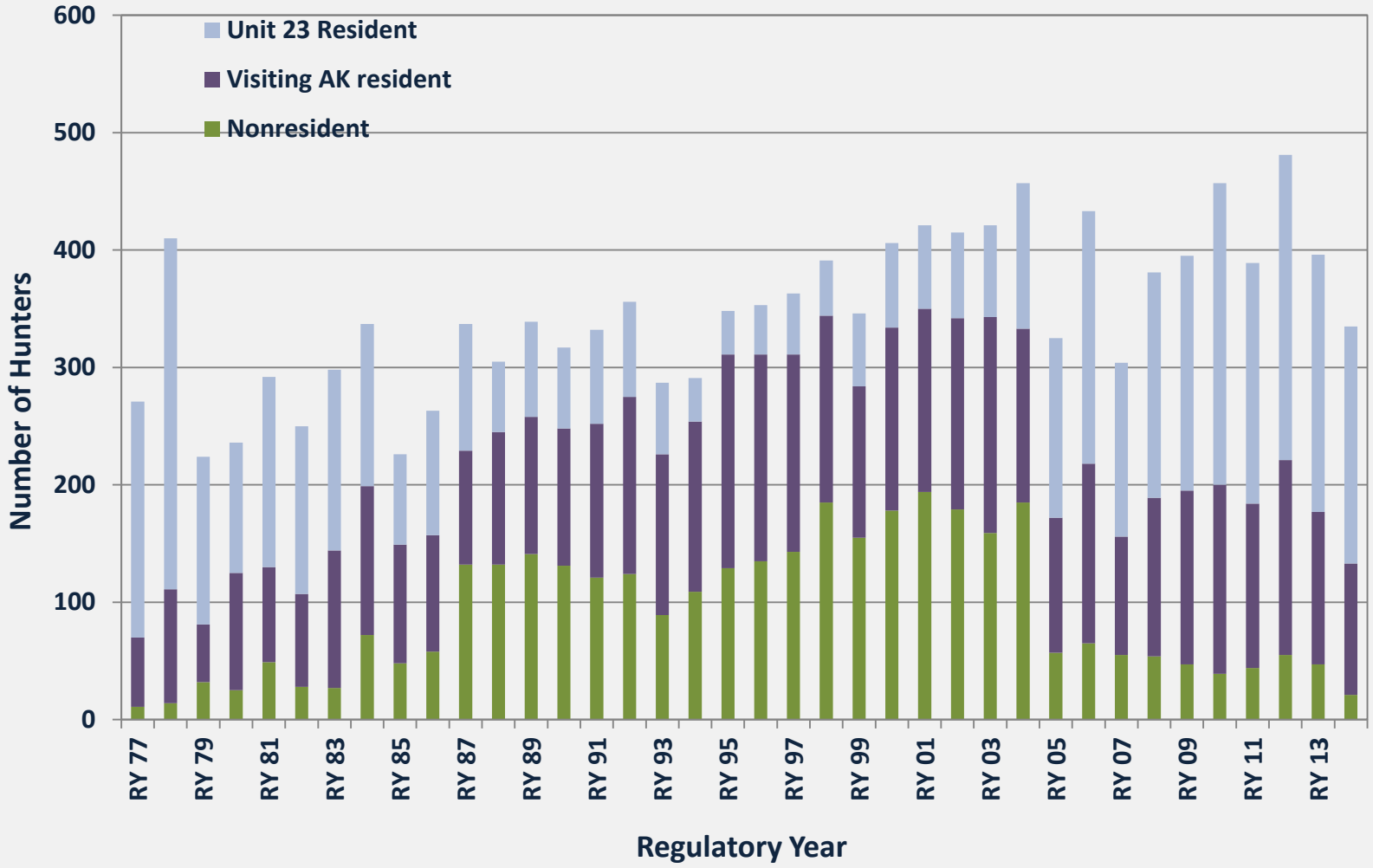
Projected Harvestable surplus: 330-420

ANS: 325-400

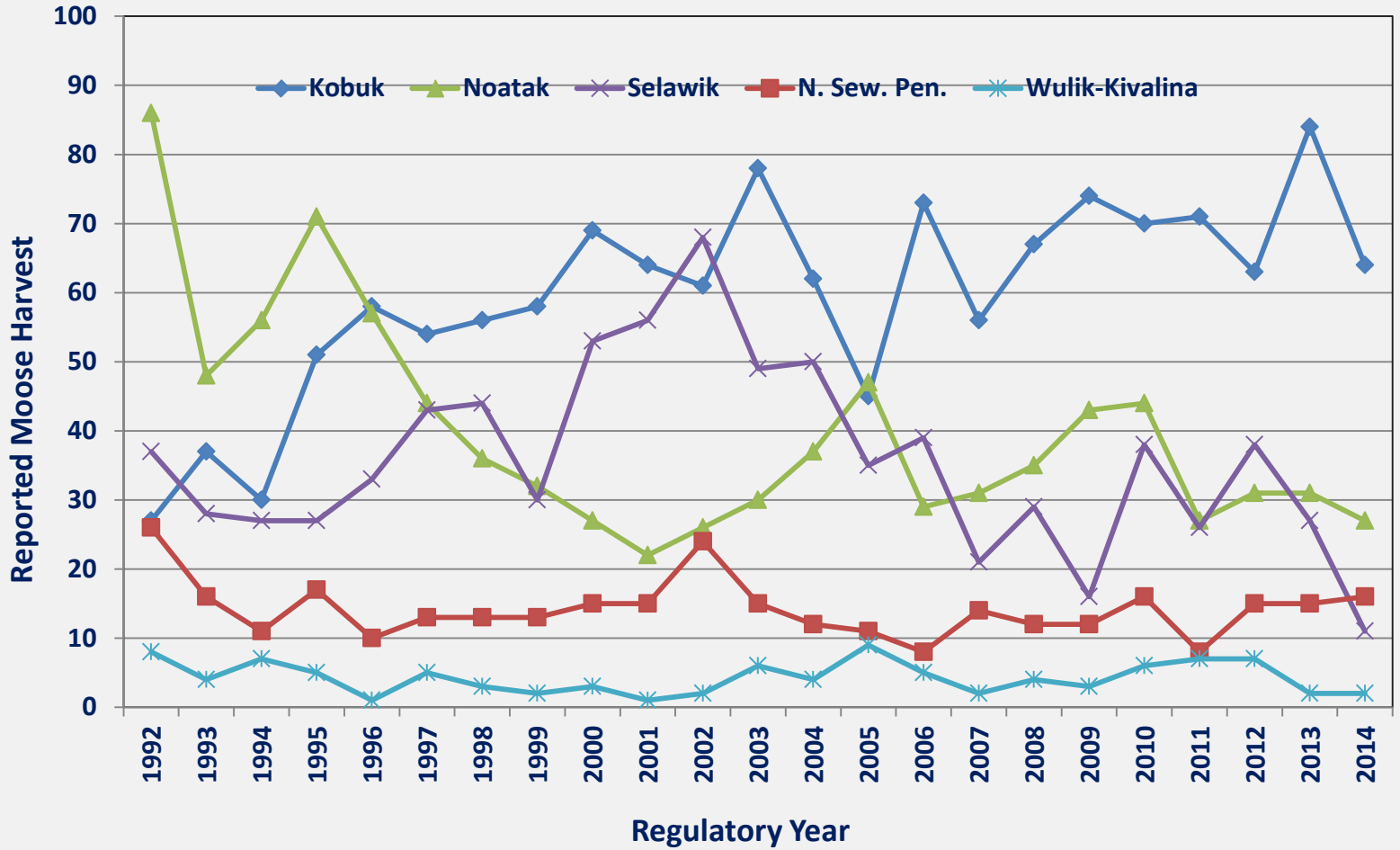
Participation and Harvest Information



Hunter Effort by Residency



Moose Harvest by Drainage



Summary:

- *Recommended- Amend to 1 antlered bull bag limit*
- *Unit Wide Declining Trend / 5 year Survey Intervals*
- *Harvestable Surplus is close to ANS*
- *Susceptibility of Cows / Cow Harvest Increase*
- *Federal Season: August 1 - March 31*

Reauthorize the Antlerless Moose Seasons in Unit 23

The department **OPPOSES** this proposal

Department Proposal

<i>Kotzebue Sound AC</i>	<i>Support (5-0)</i>
<i>Noatak Kivalina AC</i>	<i>Dec 22</i>
<i>Lower Kobuk AC</i>	<i>Dec 20</i>
<i>Upper Kobuk AC</i>	<i>Dec 21</i>

Lengthen nonresident fall hunting season for brown bear in Unit 23

Current Season: Sept 1 – Oct 31

Proposed: Aug 1 – Oct 31

Recommendation: SUPPORT

Public Proposal

<i>Kotzebue Sound AC</i>	<i>Support (5-0)</i>	<i>Northern Seward Peninsula AC</i>	<i>Support (4-0)</i>
<i>Noatak Kivalina AC</i>	<i>Dec 22</i>		
<i>Lower Kobuk AC</i>	<i>Dec 21</i>		
<i>Upper Kobuk AC</i>	<i>Support (5-0)</i>		

Effects of this proposal:

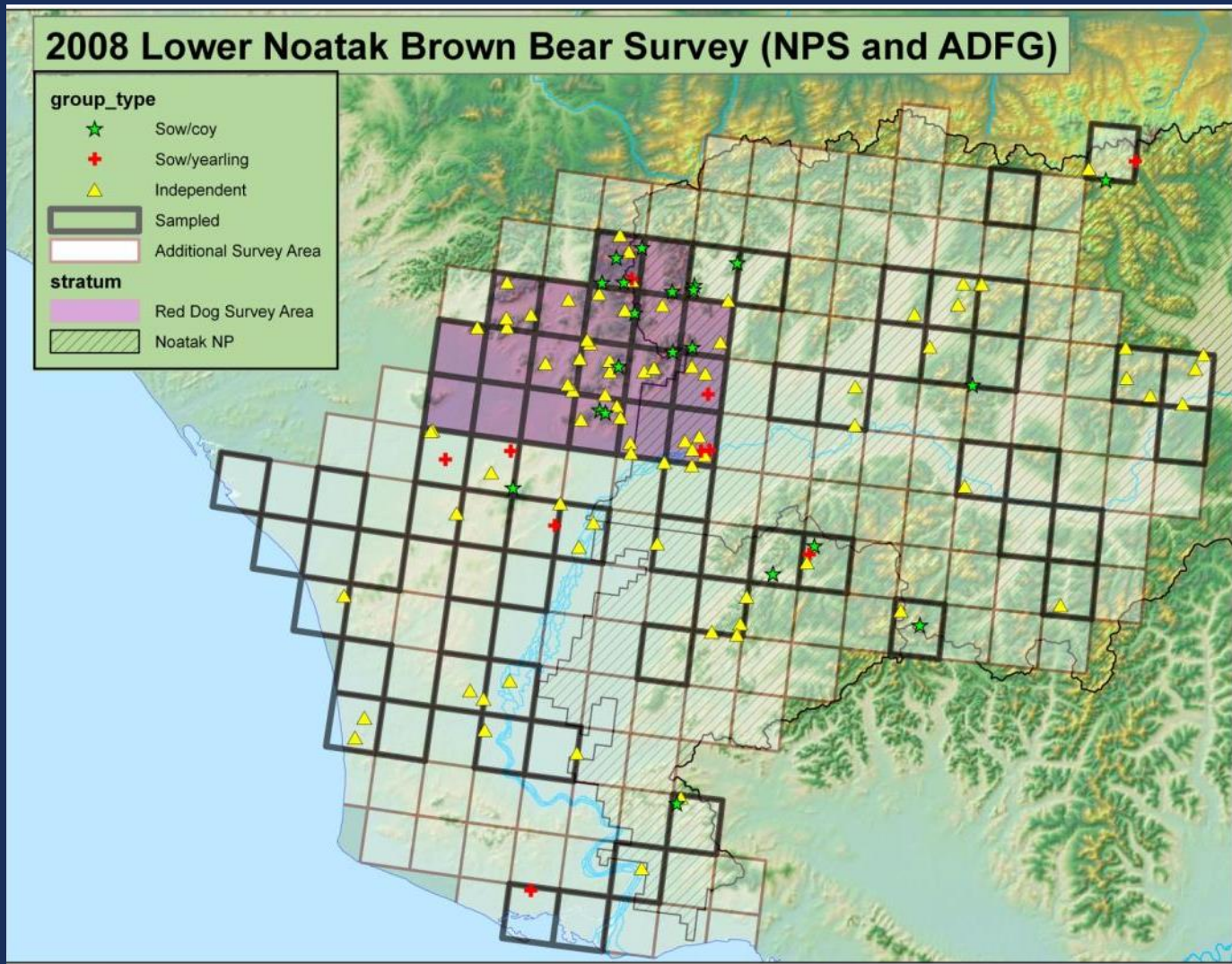
- **Provides nonresident bear hunters more opportunity**
- **Could reduce user conflicts in September**



Population : unknown (3500 extrapolated average)

Status: stable / increasing

Harvest: 50 per year



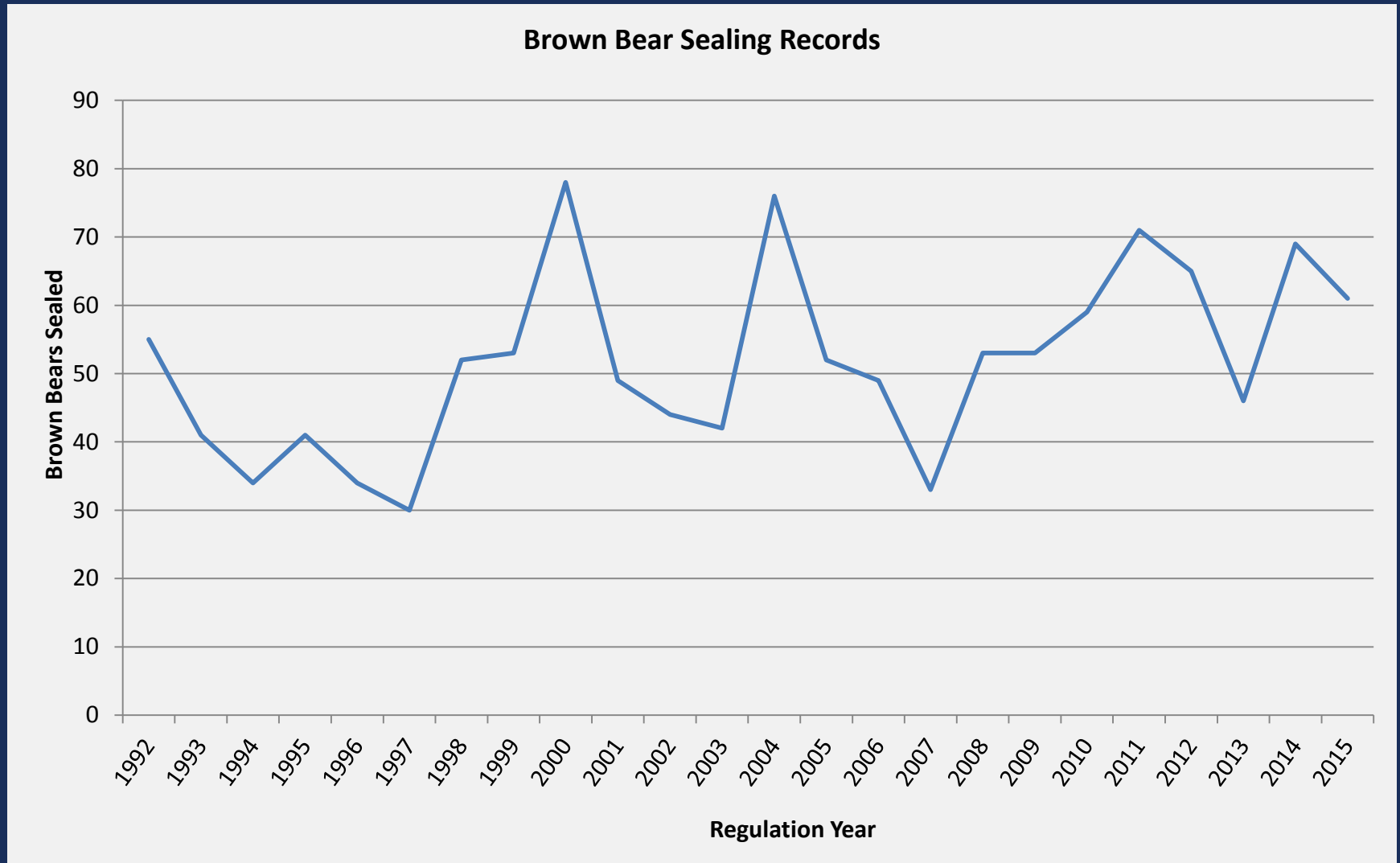
1987 Red Dog Mine area mark-recapture brown bear census

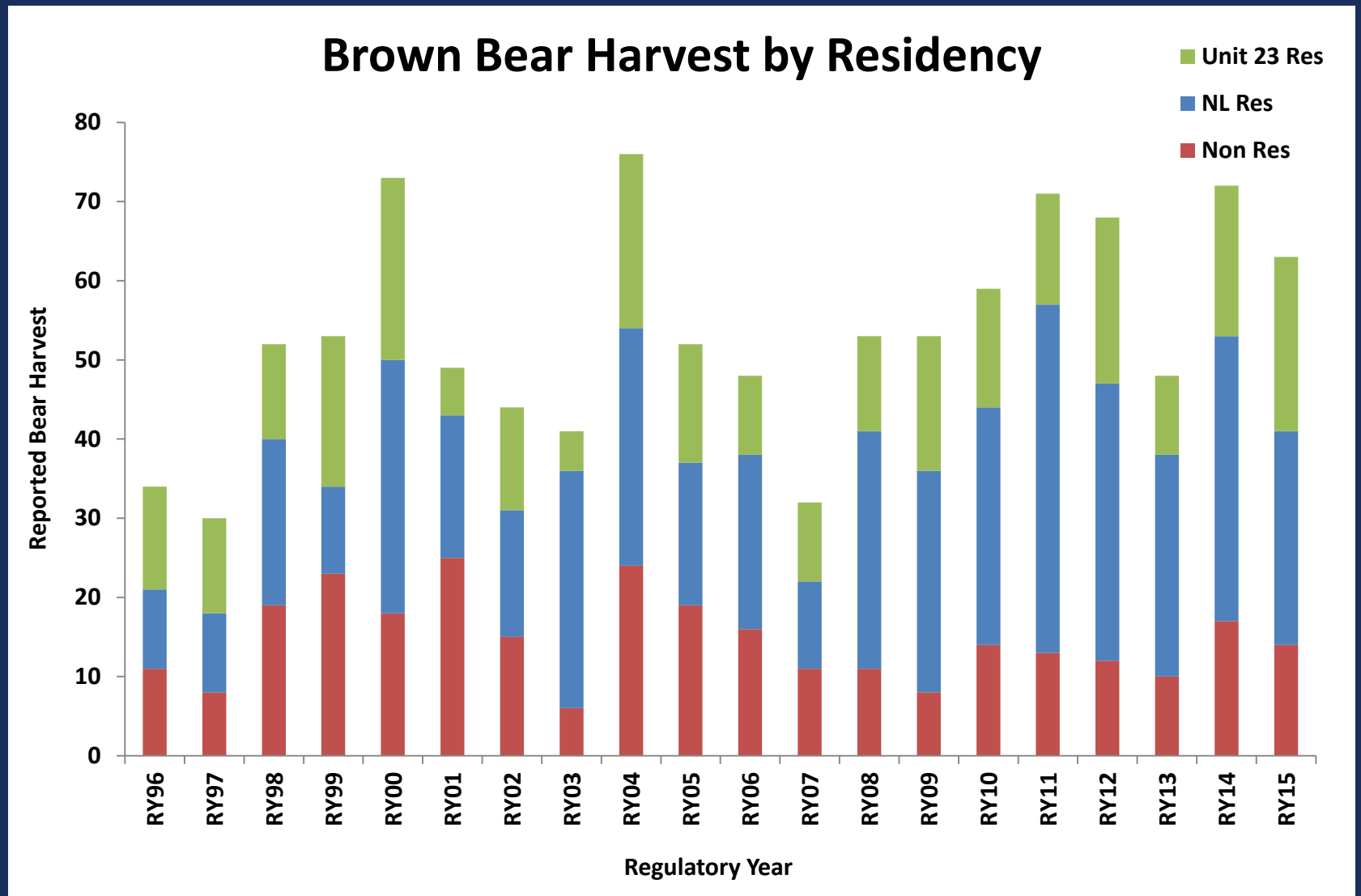
- 1 Bear every 26 mi²

2008 Red Dog Mine area paired sample brown bear census

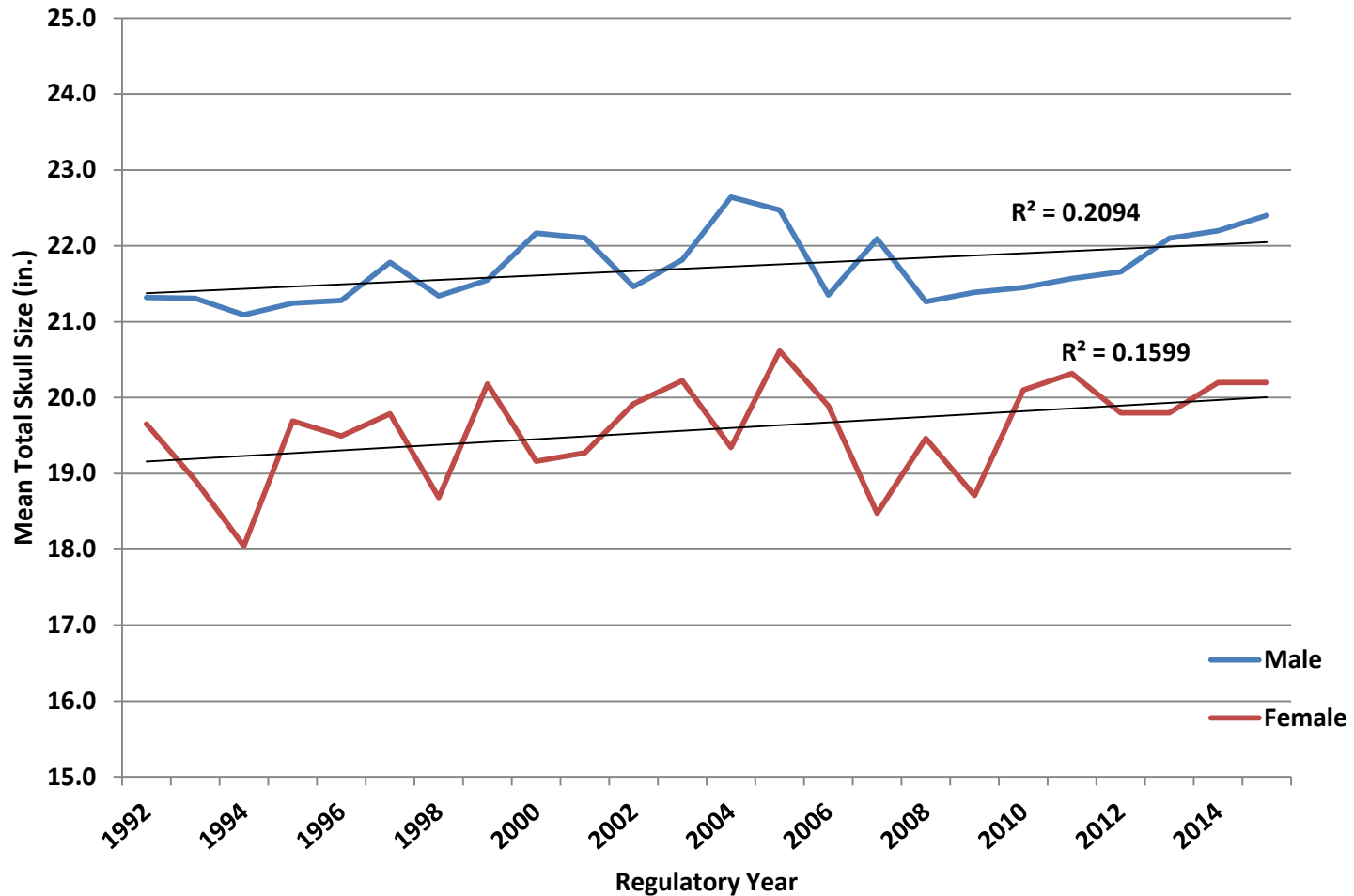
- 3.4 Bears every 26 mi²

(Preliminary results using 1987 sightability correction factor)





Brown Bear Skull Size



Lengthen nonresident fall hunting season for brown bear in Unit 23

Current Season: Sept 1 – Oct 31

Proposed: **Aug 1** – Oct 31

Recommendation: SUPPORT

Public Proposal

<i>Kotzebue Sound AC</i>	<i>Support (5-0)</i>	<i>Northern Seward Peninsula AC</i>	<i>Support (4-0)</i>
<i>Noatak Kivalina AC</i>	<i>Dec 22</i>		
<i>Lower Kobuk AC</i>	<i>Dec 21</i>		
<i>Upper Kobuk AC</i>	<i>Support (5-0)</i>		

Lengthen nonresident fall hunting season for brown bear in Unit 23

Current Season: Sept 1 – Oct 31

Proposed: Aug 20 – Oct 31

Recommendation: SUPPORT

PROPOSED BY: Anchorage Fish and Game AC

<i>Kotzebue Sound AC</i>	<i>Support (5-0)</i>	<i>Northern Seward Peninsula AC</i>	<i>Support (4-0)</i>
<i>Noatak Kivalina AC</i>	<i>Dec 22</i>		
<i>Lower Kobuk AC</i>	<i>Dec 21</i>		
<i>Upper Kobuk AC</i>	<i>Support (5-0)</i>		

Lengthen nonresident fall hunting season for brown bear in Unit 23

Current Season: Sept 1 – Oct 31

Proposed: **Aug 25** – Oct 31

Recommendation: **SUPPORT**

Public Proposal

<i>Kotzebue Sound AC</i>	<i>Support (5-0)</i>	<i>Northern Seward Peninsula AC</i>	<i>Support (4-0)</i>
<i>Noatak Kivalina AC</i>	<i>Dec 22</i>		
<i>Lower Kobuk AC</i>	<i>Dec 21</i>		
<i>Upper Kobuk AC</i>	<i>Support (5-0)</i>		

Increase the resident bag limit for brown bears in Unit 23

Current Bag limit: 1 Bear per year

Proposed: 2 Bears per year

Recommendation: SUPPORT

PROPOSED BY: James Bourquin and the Kotzebue AC

<i>Kotzebue Sound AC</i>	<i>Support (5-0)</i>	<i>Northern Seward Peninsula AC</i>	<i>Support (4-0)</i>
<i>Noatak Kivalina AC</i>	<i>Dec 22</i>		
<i>Lower Kobuk AC</i>	<i>Dec 21</i>		
<i>Upper Kobuk AC</i>	<i>Support (5-0)</i>		

Effects of this proposal:

- Provides resident bear hunters more opportunity
- 2 bear bag limit would allow sale of hide and skull

Increase the resident bag limit for brown bears in Unit 23

Current Bag limit: 1 Bear per year
Proposed: 2 Bears per year

Recommendation: SUPPORT

PROPOSED BY: James Bourquin and the Kotzebue AC

<i>Kotzebue Sound AC</i>	<i>Support (5-0)</i>	<i>Northern Seward Peninsula AC</i>	<i>Support (4-0)</i>
<i>Noatak Kivalina AC</i>	<i>Dec 22</i>		
<i>Lower Kobuk AC</i>	<i>Dec 21</i>		
<i>Upper Kobuk AC</i>	<i>Support (5-0)</i>		

Require a guide-client agreement to apply for a nonresident brown bear drawing permit in Unit 23

Recommendation: Take No Action

Public Proposal

<i>Kotzebue Sound AC</i>	<i>Support (5-0)</i>	<i>Northern Seward Peninsula AC</i>	<i>No Action</i>
<i>Noatak Kivalina AC</i>	<i>Dec 22</i>		
<i>Lower Kobuk AC</i>	<i>Dec 21</i>		
<i>Upper Kobuk AC</i>	<i>No Action</i>		

In March 2016, the Board of Game adopted regulations requiring all nonresidents and nonresident aliens to obtain a guide-client agreement prior to applying for a drawing hunt

Require a guide-client agreement to apply for a nonresident brown bear drawing permit in Unit 23

Recommendation: Take No Action

Public Proposal

<i>Kotzebue Sound AC</i>	<i>Support (5-0)</i>	<i>Northern Seward Peninsula AC</i>	<i>No Action</i>
<i>Noatak Kivalina AC</i>	<i>Dec 22</i>		
<i>Lower Kobuk AC</i>	<i>Dec 21</i>		
<i>Upper Kobuk AC</i>	<i>No Action</i>		

Allow the use of bait for black and brown bear hunting in Unit 23.

Recommendation: Neutral

Public Proposal

<i>Kotzebue Sound AC</i>	<i>Support (4-1)</i>	<i>Northern Seward Peninsula AC</i>	<i>Support (4-0)</i>
<i>Noatak Kivalina AC</i>	<i>Dec 22</i>		
<i>Lower Kobuk AC</i>	<i>Dec 21</i>		
<i>Upper Kobuk AC</i>	<i>Support (5-0)</i>		

Effects of this proposal:

- **Provides bear hunters more opportunity**
- **No biological concern for current level of harvest**
- **Not expected to significantly increase harvest**

Allow the use of bait for black and brown bear hunting in Unit 23.

Recommendation: Neutral

Public Proposal

<i>Kotzebue Sound AC</i>	<i>Support (4-1)</i>	<i>Northern Seward Peninsula AC</i>	<i>Support (4-0)</i>
<i>Noatak Kivalina AC</i>	<i>Dec 22</i>		
<i>Lower Kobuk AC</i>	<i>Dec 21</i>		
<i>Upper Kobuk AC</i>	<i>Support (5-0)</i>		

Allow the use of snowmachines to position and harvest brown bears and furbearers in Unit 23

Recommendation: Neutral

PROPOSED BY: Kotzebue Fish and Game AC

<i>Kotzebue Sound AC</i>	<i>Support (5-0)</i>	<i>Northern Seward Peninsula AC</i>	<i>Support (4-0)</i>
<i>Noatak Kivalina AC</i>	<i>Dec 22</i>		
<i>Lower Kobuk AC</i>	<i>Dec 21</i>		
<i>Upper Kobuk AC</i>	<i>Support (5-0)</i>		

Effects of this proposal:

- Provides bear hunters more opportunity
- Provides Furbearer harvest opportunity
 - Otter
 - Fox
 - Lynx

Allow the use of snowmachines to position and harvest brown bears and furbearers in Unit 23

Recommendation: Neutral

PROPOSED BY: Kotzebue Fish and Game AC

<i>Kotzebue Sound AC</i>	<i>Support (5-0)</i>	<i>Northern Seward Peninsula AC</i>	<i>Support (4-0)</i>
<i>Noatak Kivalina AC</i>	<i>Dec 22</i>		
<i>Lower Kobuk AC</i>	<i>Dec 21</i>		
<i>Upper Kobuk AC</i>	<i>Support (5-0)</i>		

Expand the Noatak Controlled Use Area

Recommendation: NEUTRAL

Noatak/Kivalina AC

Advisory Committee Votes

Kotzebue Sound: support 5-0

Lower Kobuk:

WAHWG: support 13-1

Noatak-Kivalina: support 5-0

Buckland-Deering: support

Upper Kobuk: support

Effect of Proposal:

- Expansion of the controlled use area would reduce hunting-related air traffic from mid-Aug through September over ~2/3 of the Noatak River, potentially concentrating it in other areas
- The effect that this reallocation of flying activity would have on caribou movements, success rates of hunters that do not use aircraft, or user conflicts is unknown

Proposal 44

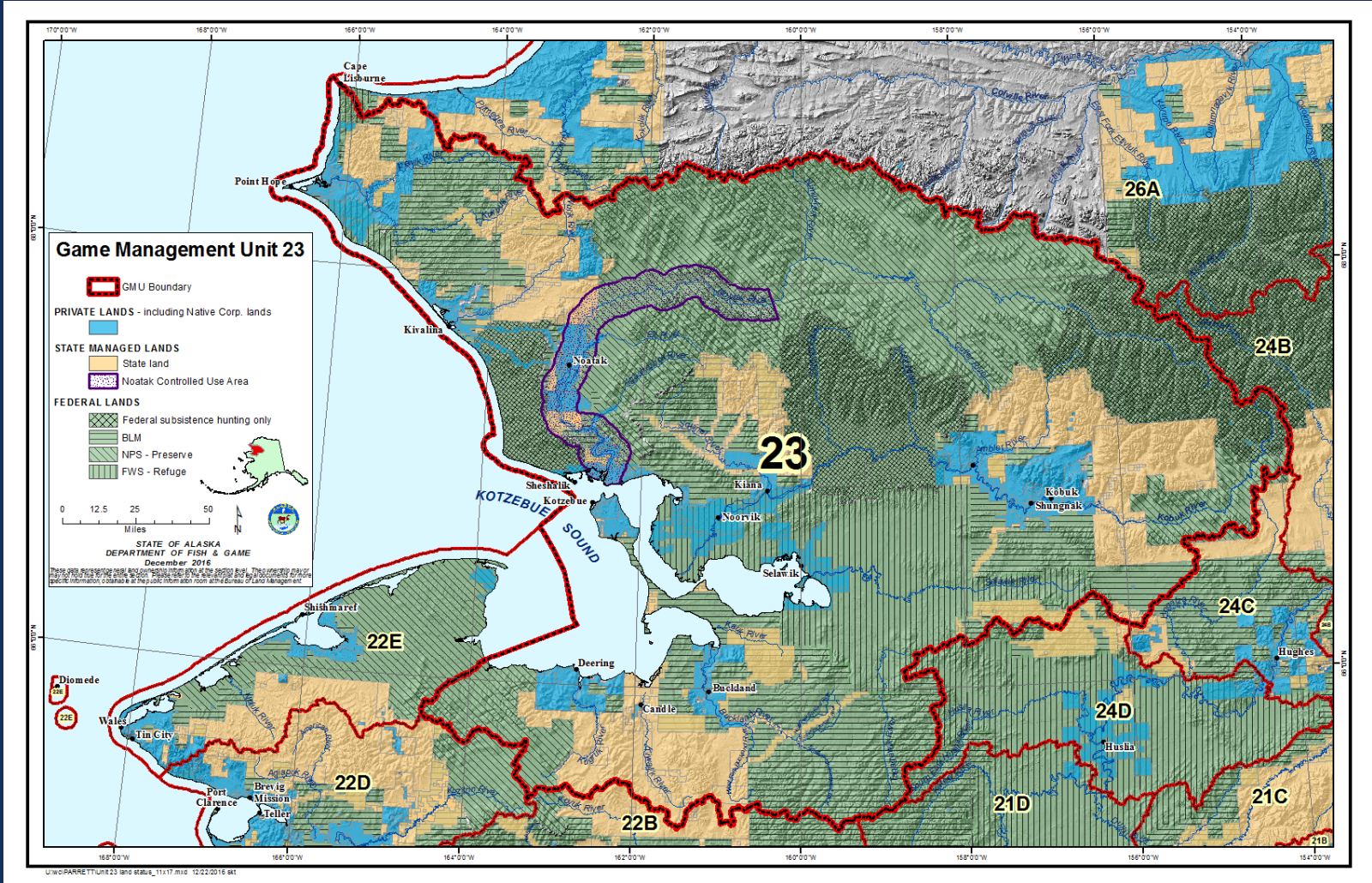
Caribou / Unit 23



Issues:

- **Long-term changes to caribou movements have led to changes in hunter distribution**
- **Local hunters report regularly using areas near and upstream of the current CUA boundary**
- **Closure of Unit 23 federal lands to hunters not qualified to participate in the federal subsistence hunt may have led to increased use of gravel bars on the upper Noatak**

Unit 23 Land Status



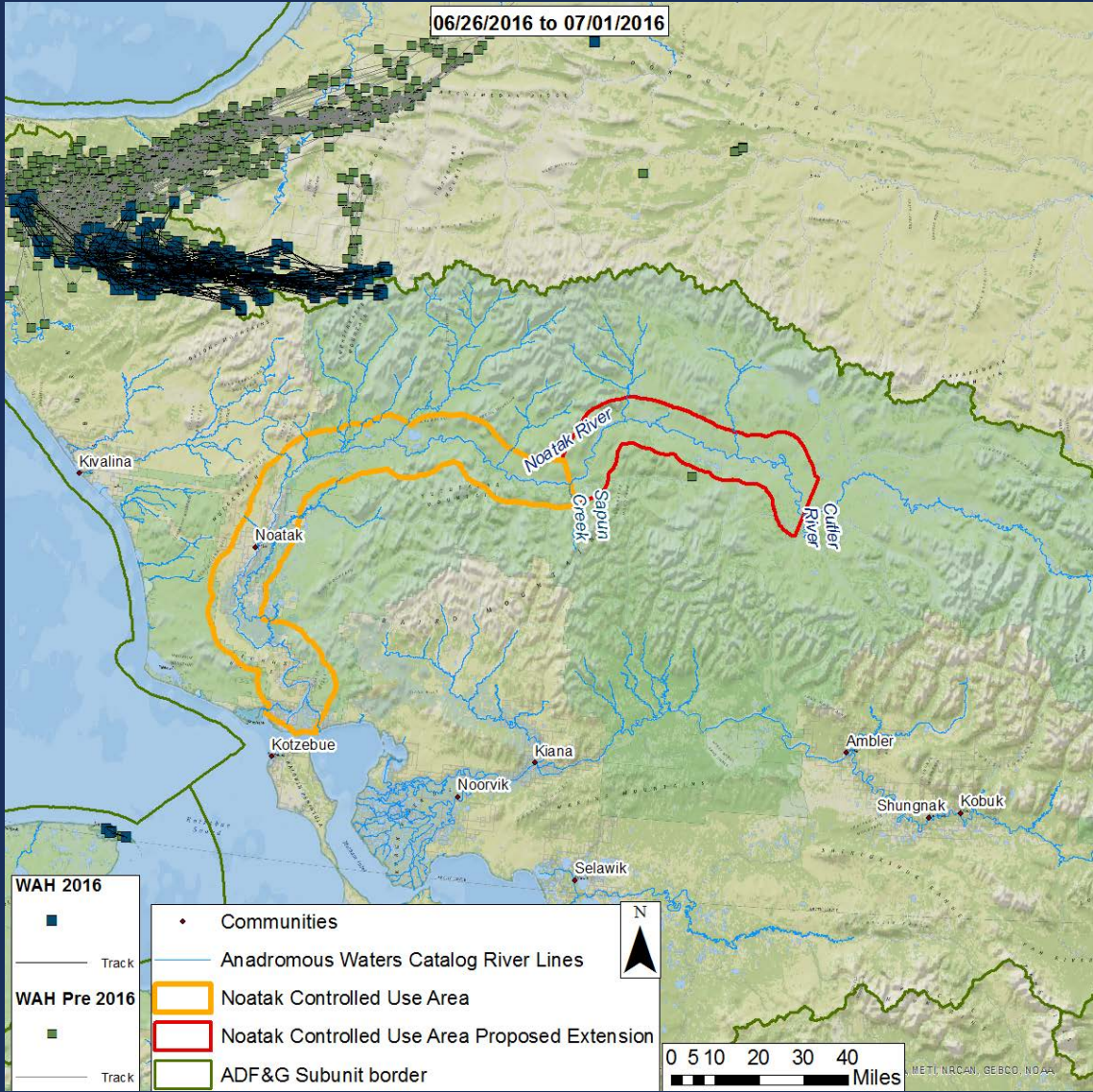
Proposal 44

Caribou / Unit 23

July 1 – Oct 31

BLUE: 2016

GREEN: 2011-2015



July 1 – Oct 31

BLUE: 2016

GREEN: 2011-2015



Prop44_Vid3.mp4

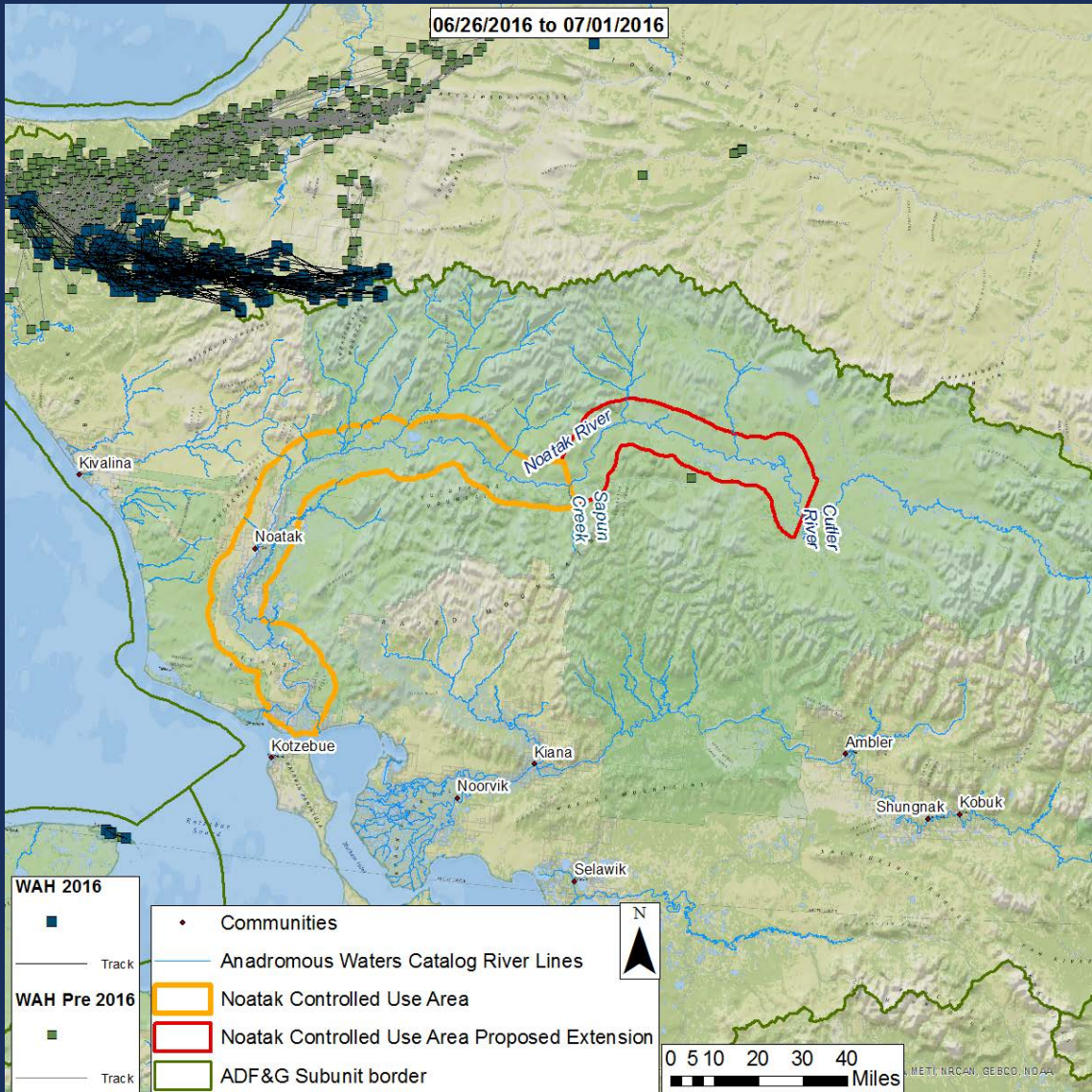
Proposal 44

Caribou / Unit 23

July 1 – Oct 31

BLUE: 2016

GREEN: 2011-2015



Expand the Noatak Controlled Use Area

Recommendation: NEUTRAL

Noatak/Kivalina AC

Advisory Committee Votes

Kotzebue Sound: support 5-0

Lower Kobuk:

WAHWG: support 13-1

Noatak-Kivalina: support 5-0

Buckland-Deering: support

Upper Kobuk: support

Camp spacing within and near the Noatak CUA

Recommendation: NEUTRAL

Noatak/Kivalina AC

Advisory Committee Votes

Kotzebue Sound: support 5-0

Lower Kobuk:

WAHWG: support as amended 14-1

Noatak-Kivalina: support as amended 5-0

Buckland-Deering: support

Upper Kobuk: support

Effect of Proposal:

- **Require that all hunting camps, regardless of method of access, be spaced three miles apart within the Noatak CUA, and along the Agashashok, Eli, and Squirrel rivers**
- **Proponent suggests an amendment to have all camps on the south sides of these rivers, eliminate spacing requirement**



Considerations:

- **The proponent is concerned that inadequate spacing between hunting camps has a fencing effect on caribou movements**
- **The effect that this spacing of human activity would have on caribou movements, success rates of hunters that do not use aircraft, or user conflicts is unknown**

Considerations:

- **Definition of camp**
- **Helping to ensure that hunters are not inadvertently spaced too close may require additional administrative tools**
- **Amended proposal may alleviate administrative complications**

Camp spacing within and near the Noatak CUA

Recommendation: NEUTRAL

Noatak/Kivalina AC

Advisory Committee Votes

Kotzebue Sound: support 5-0

Lower Kobuk:

WAHWG: support as amended 14-1

Noatak-Kivalina: support as amended 5-0

Buckland-Deering: support

Upper Kobuk: support