

# Background

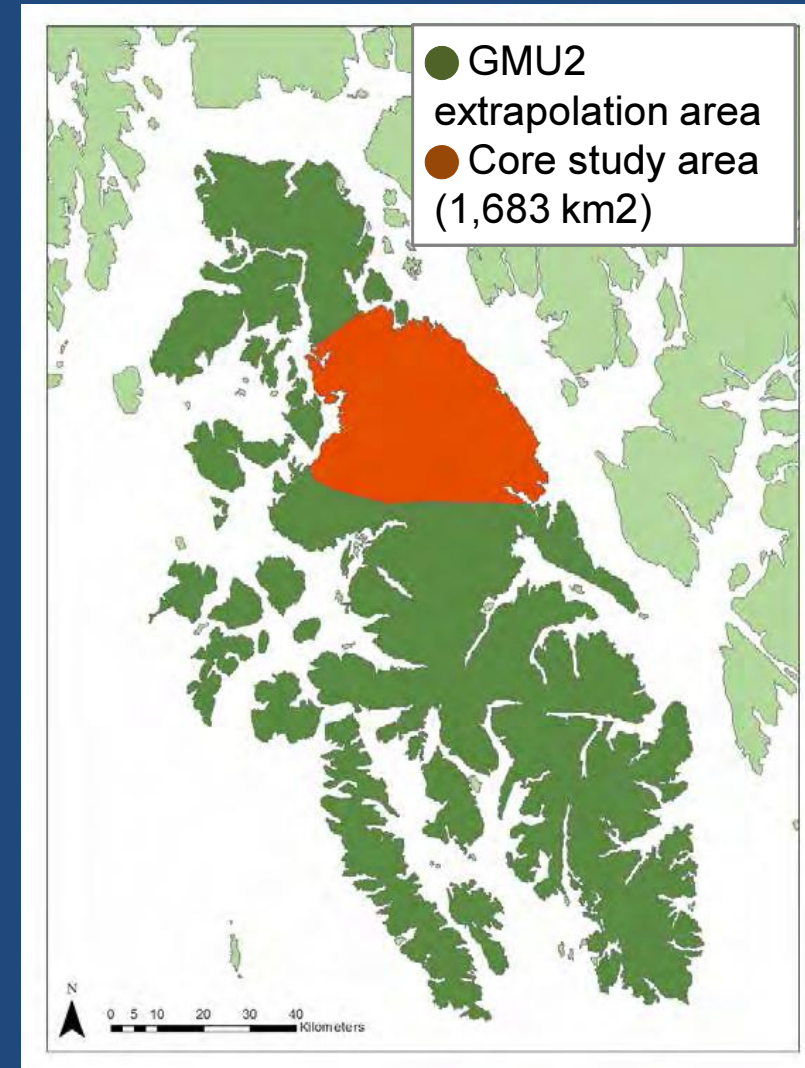
- Person and Russell (2008) determined that 38% total mortality was sustainable in a Unit 2 wolf study
- Currently only sealed wolves are included in harvest totals

[ Slide 41 from: RC-002, Units 1A and 2 Overview and Proposals (PDF) ]

# Fall Population Estimates

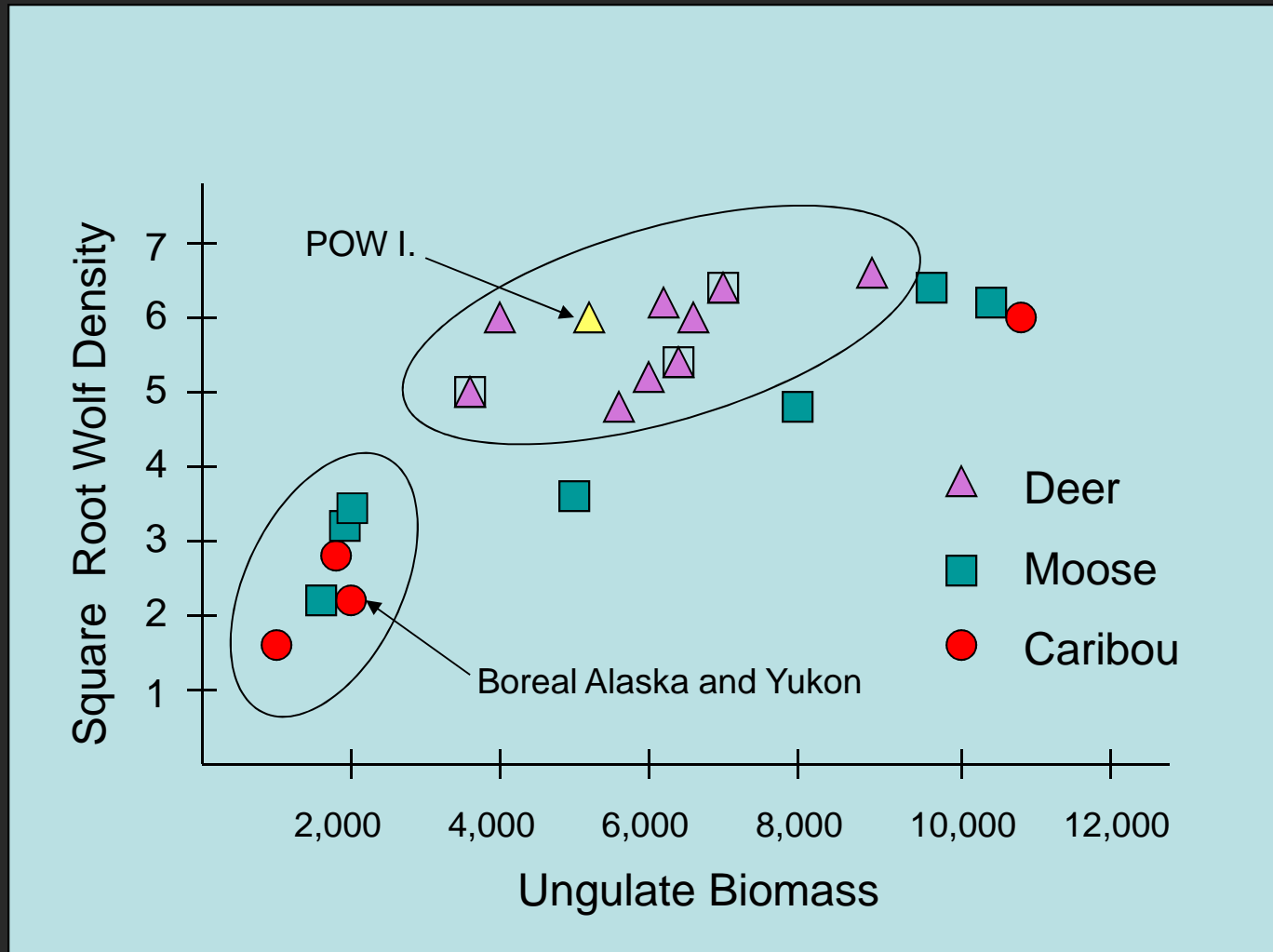
GMU 2 = 9,069 km<sup>2</sup>

Year	Pop. Estimate	SE	Density/ 1,000 km <sup>2</sup>
1994	356	±106	39.5
2003	345	±79	38
2013	221	±60	24.5

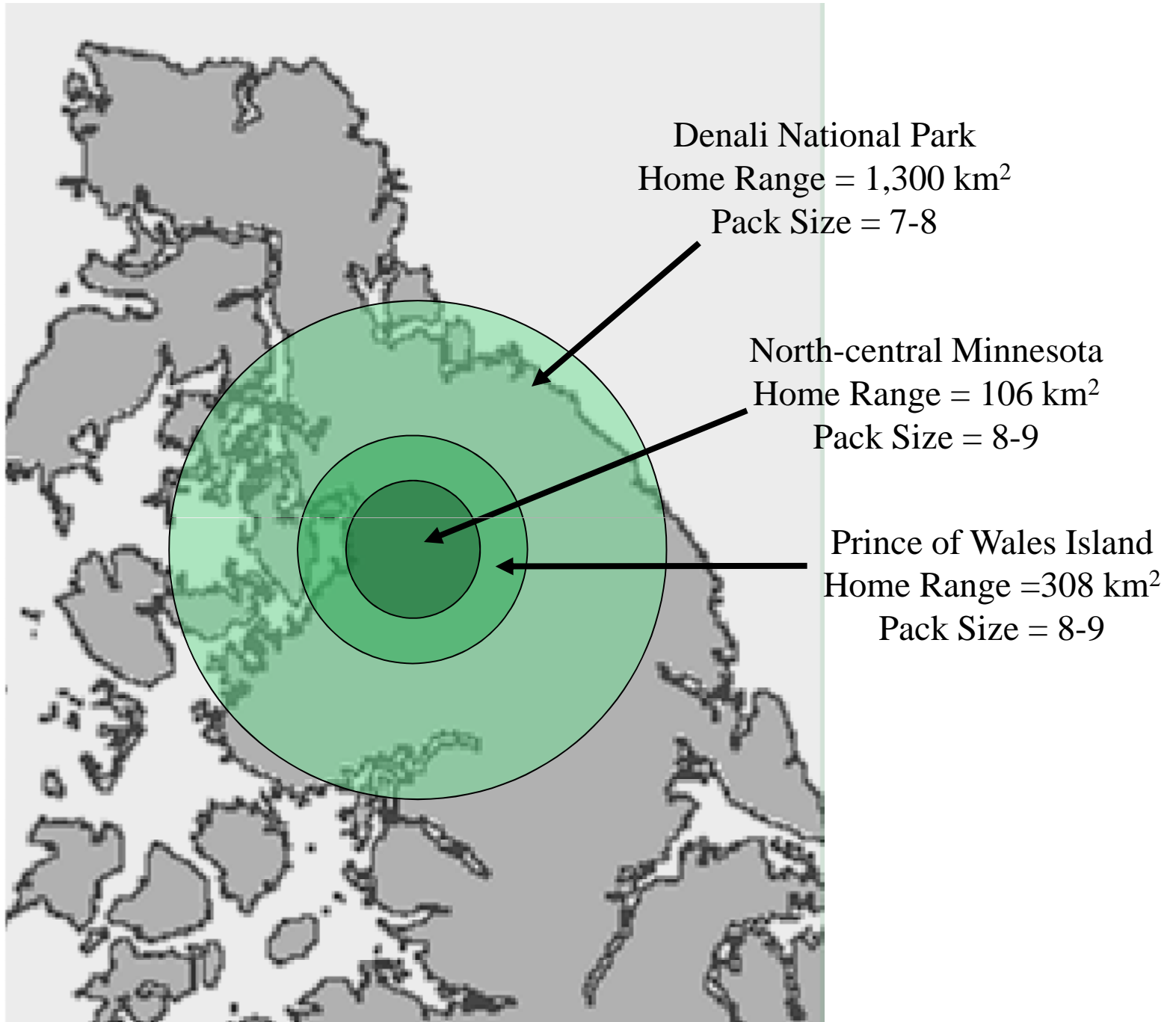


[ Roffler's Slide 21 from: RC-002, Unit 2 Wolf Population Assessment (PDF) ]

See video of Person's presentation at: <https://vimeo.com/92984376>

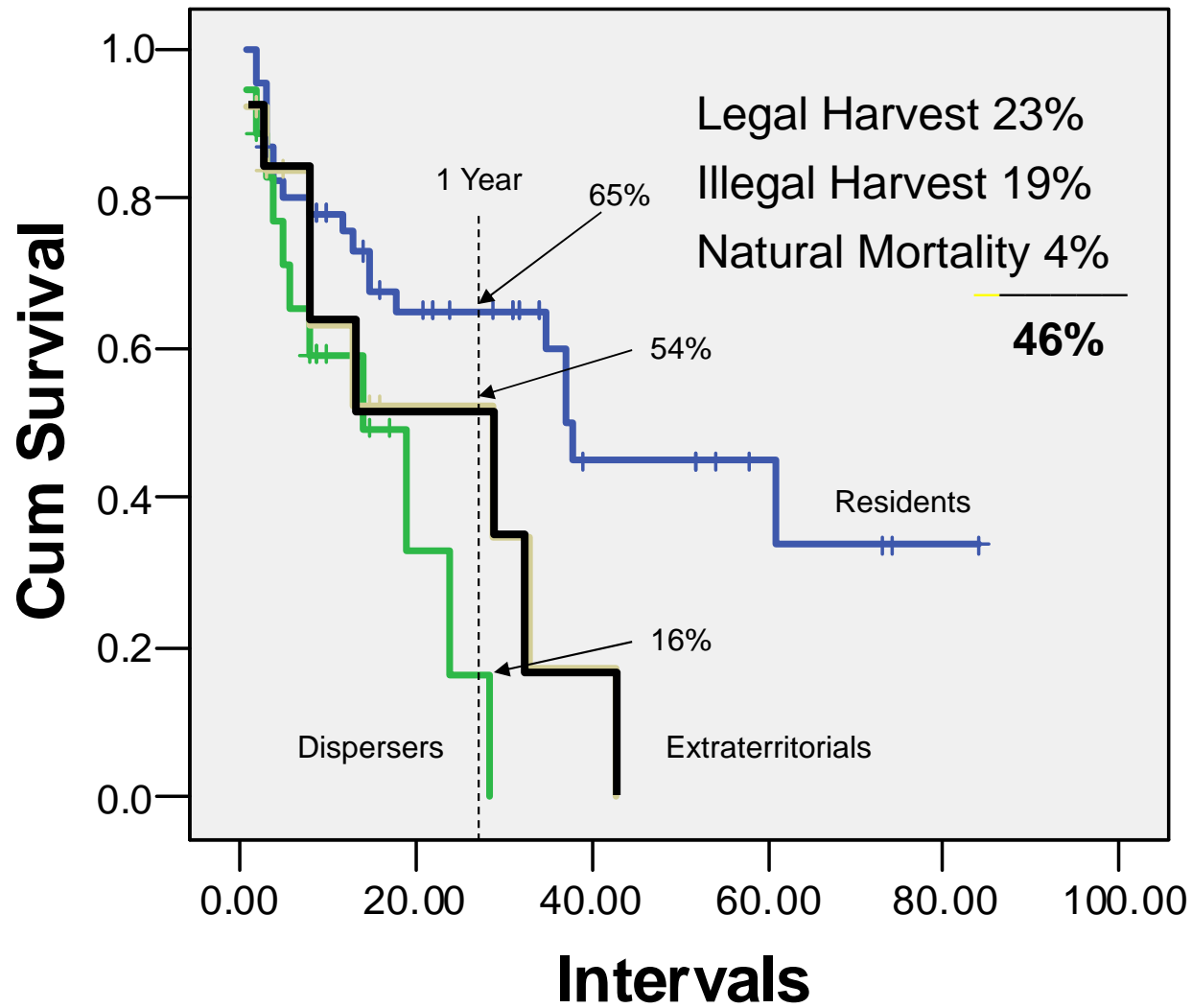


[ Person's Slide 18 from: Presentation at Nov. 2010 Board of Game meeting. ]

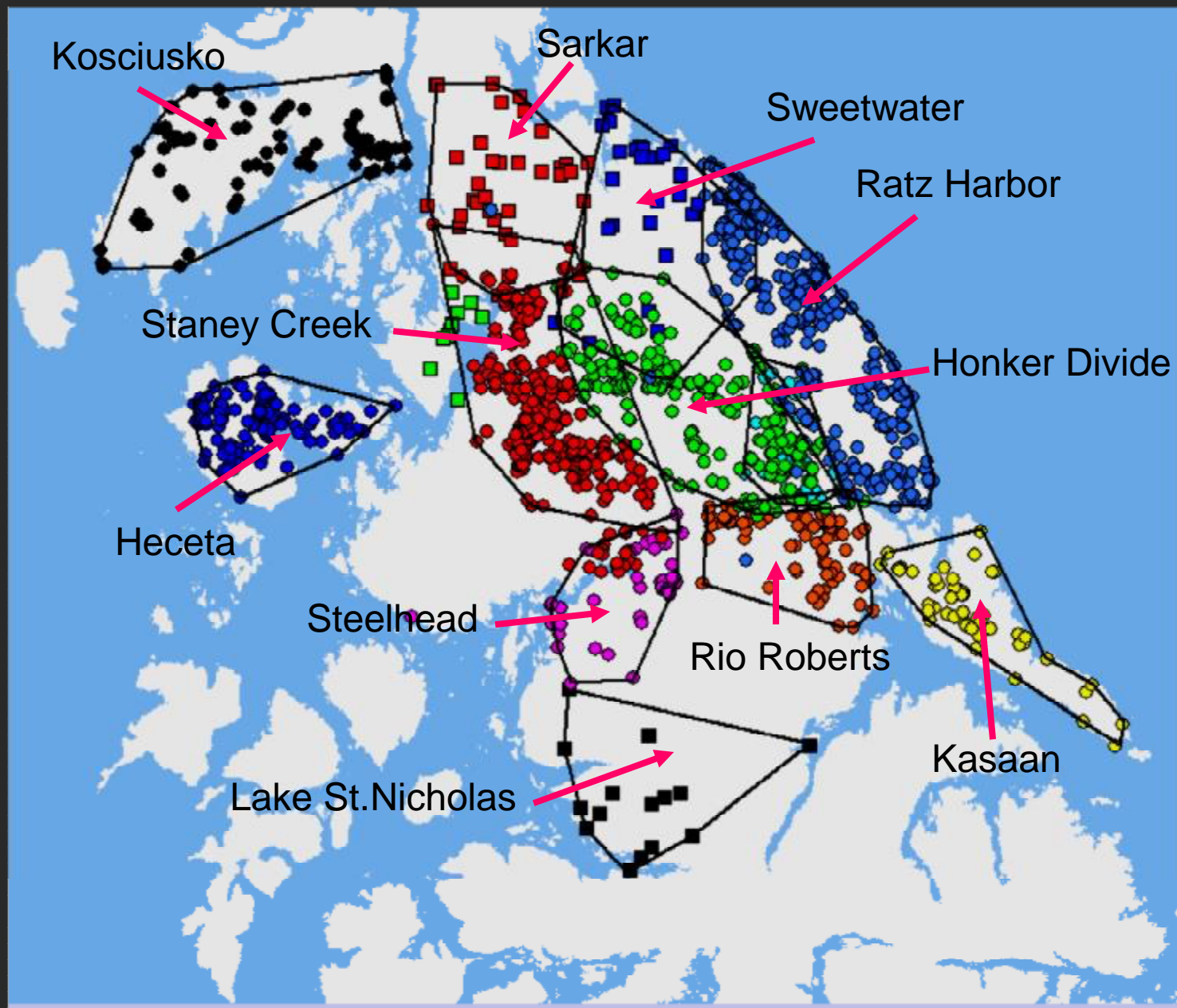


[ Person's Slide 10 from: Presentation at Nov. 2010 Board of Game meeting. ]

# Survival Functions

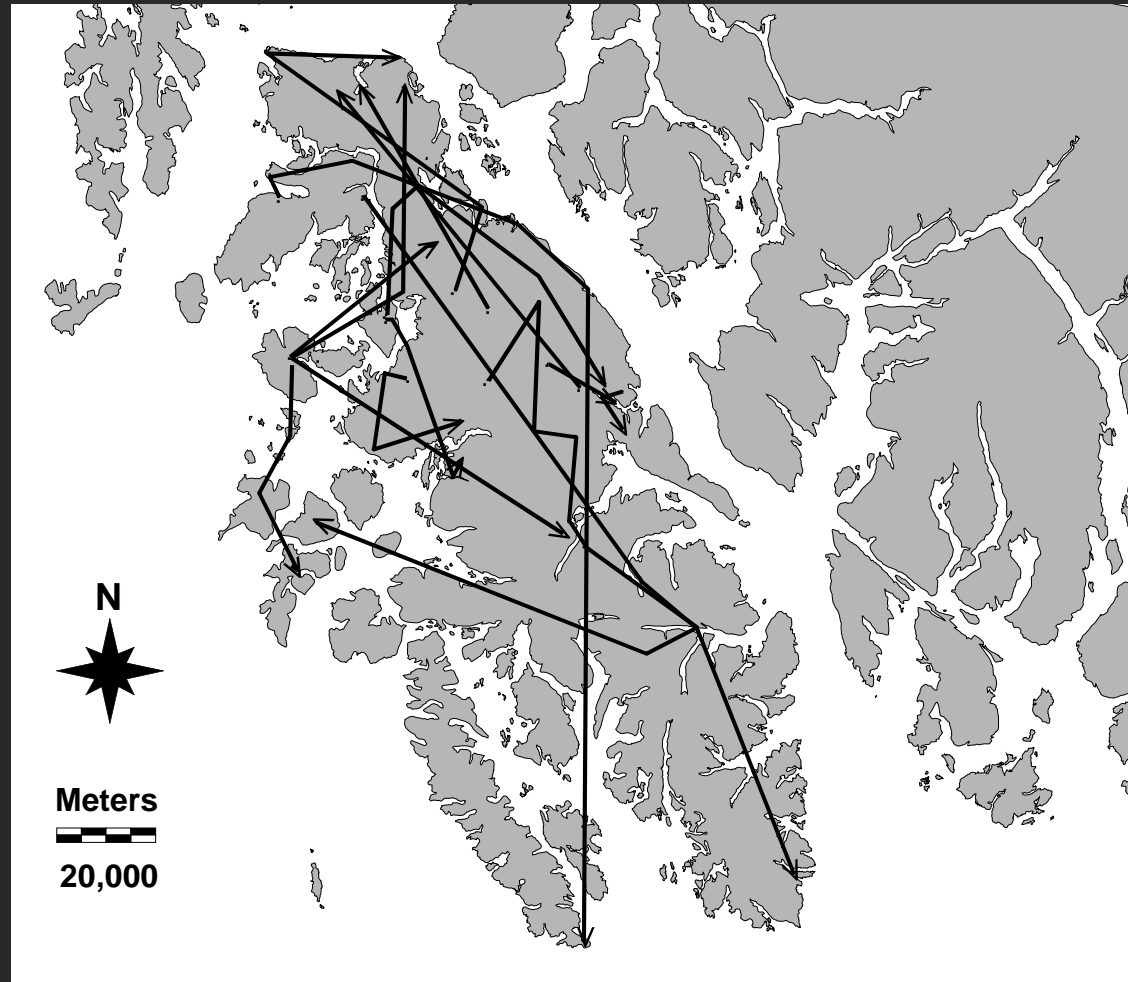


[ Person's Slide 13 from: Presentation at Nov. 2010 Board of Game meeting. ]



[ Person's Slide 9 from: Presentation at Nov. 2010 Board of Game meeting. ]

# Wolf Dispersal



[ Person's Slide 5 from: Presentation at Nov. 2010 Board of Game meeting. ]

# Estimated Unit 3 Deer Harvest

