

RC 23

GMU 13 Federal Subsistence Hunt

Merben R. Cebrian

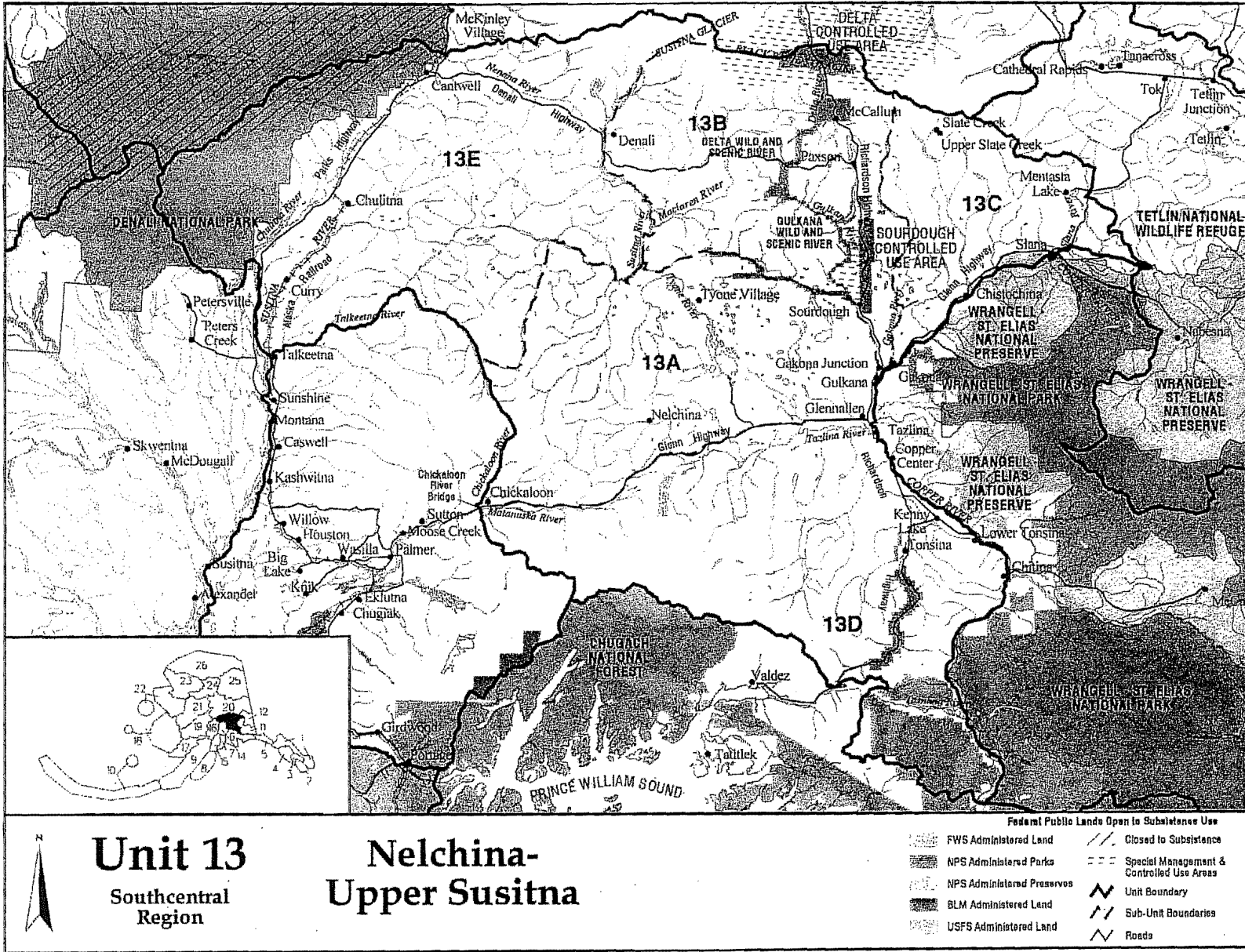
BLM Glennallen Field Office

March 2011

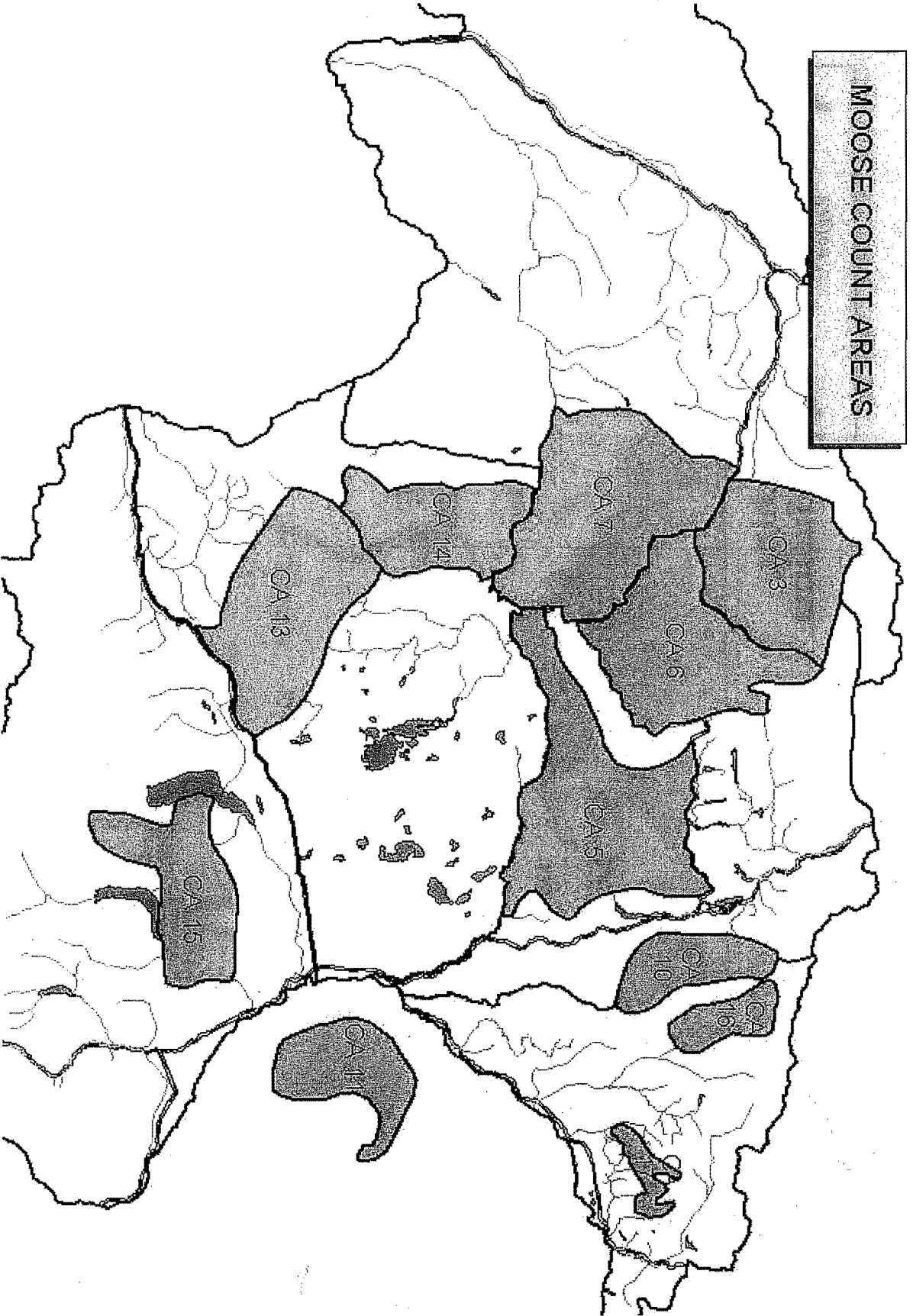


Federal moose regulations

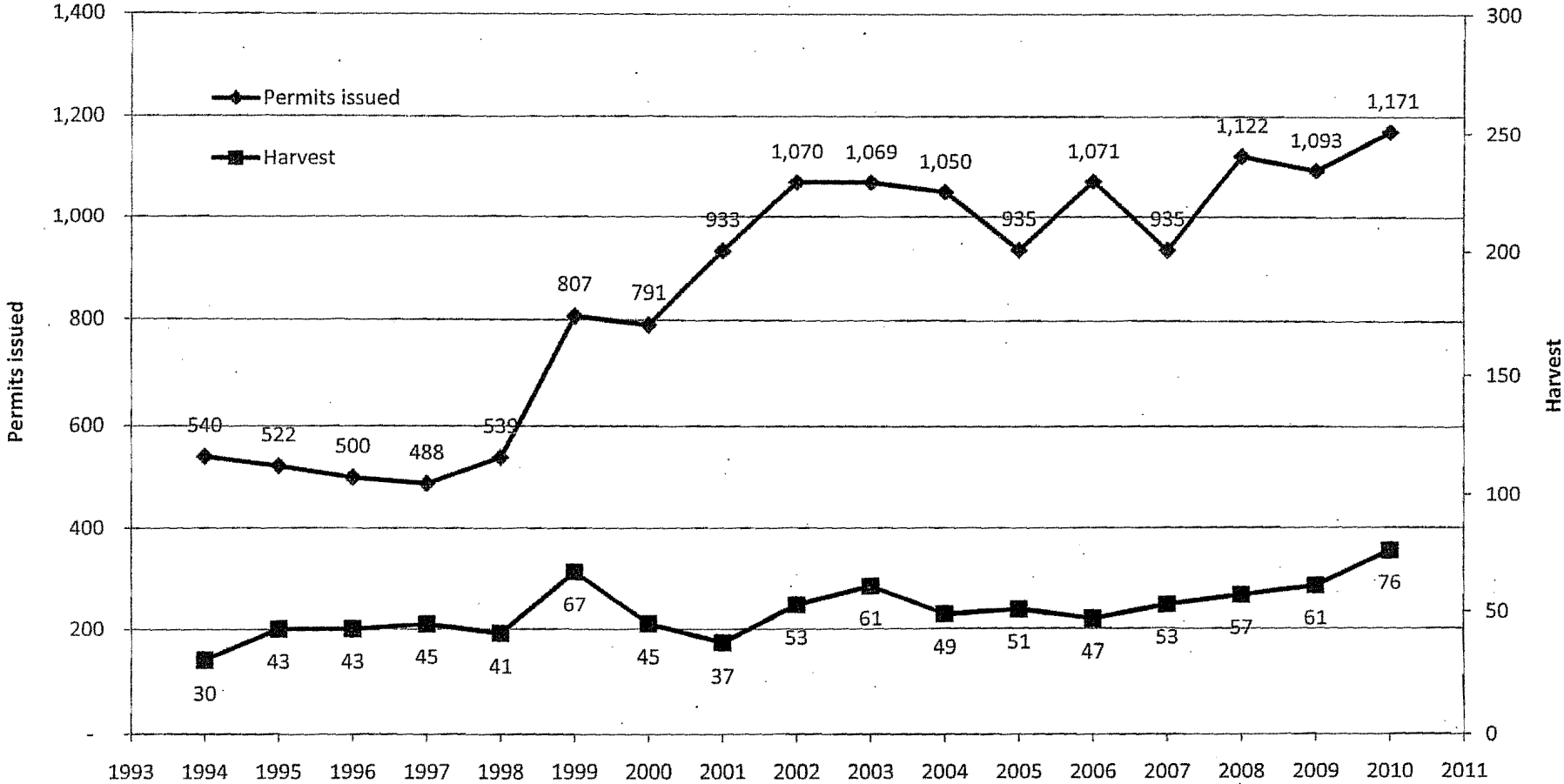
| Topics | | |
|--|---|-----------------|
| <ul style="list-style-type: none">• Units 13A and 13D—Rural residents of Unit 13, Chickaloon, and Slana | Unit 13E—1 antlered bull moose by Federal registration permit only; only 1 permit will be issued per household. | Aug. 1–Sept. 20 |
| <ul style="list-style-type: none">• Unit 13B—Rural residents of Units 13, 20D (except Fort Greely), Chickaloon, and Slana• Unit 13C—Rural residents of Units 12, 13, Healy Lake, Chickaloon, Dot Lake, and Slana• Unit 13E—Rural residents of Unit 13, Chickaloon, McKinley Village, Slana and the area between mileposts 216–239 of the Parks Highway. No Federal subsistence priority for the residents of Denali National Park headquarters | Unit 13 remainder—1 antlered bull moose by Federal registration permit only. <i>For evidence of sex requirements, see page 18.</i> <i>Federal registration and designated hunter permits are available from the local Federal land manager listed in the directory at the end of this book.</i> | Aug. 1–Sept. 20 |



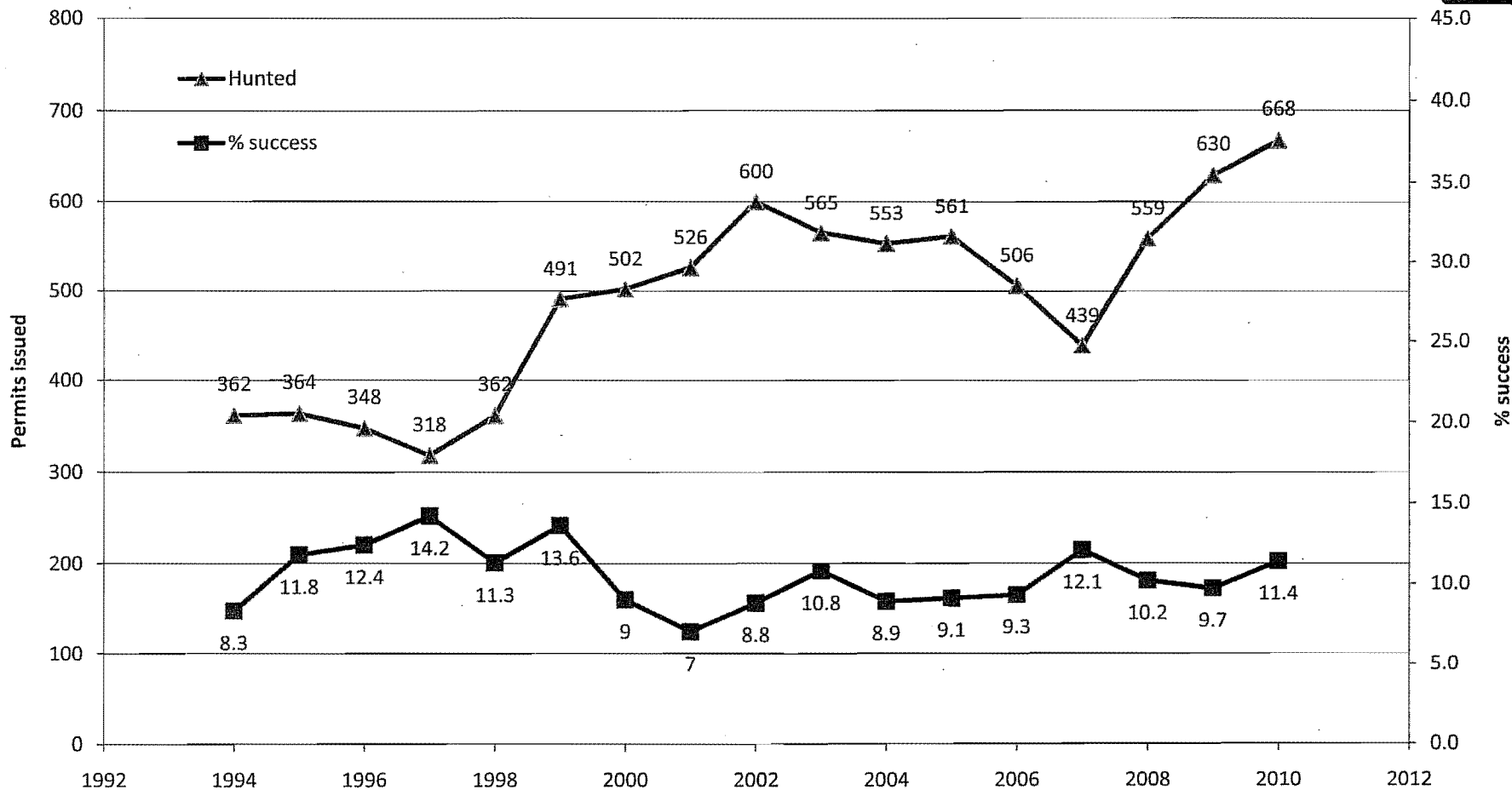
MOOSE COUNT AREAS



Unit 13 Federal moose hunt





Unit 13 Federal moose hunt



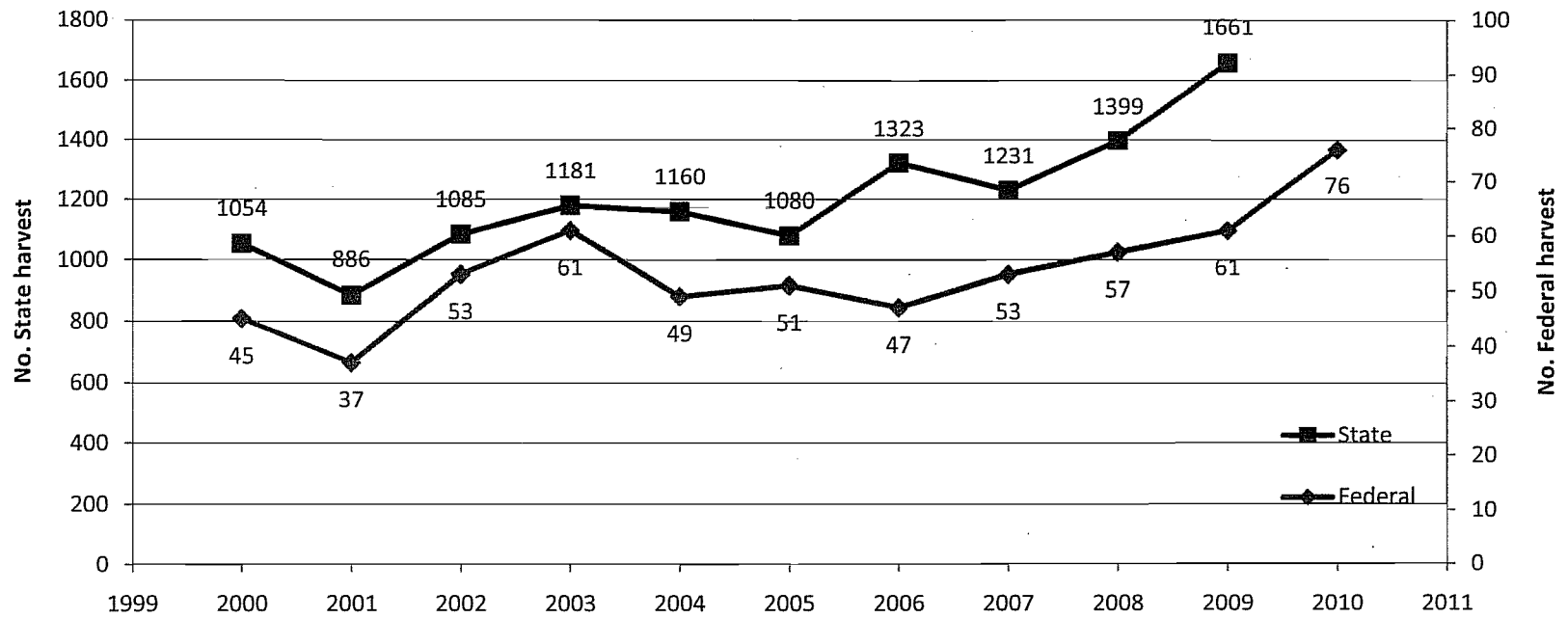
Moose harvest
GMU 13 Subunits



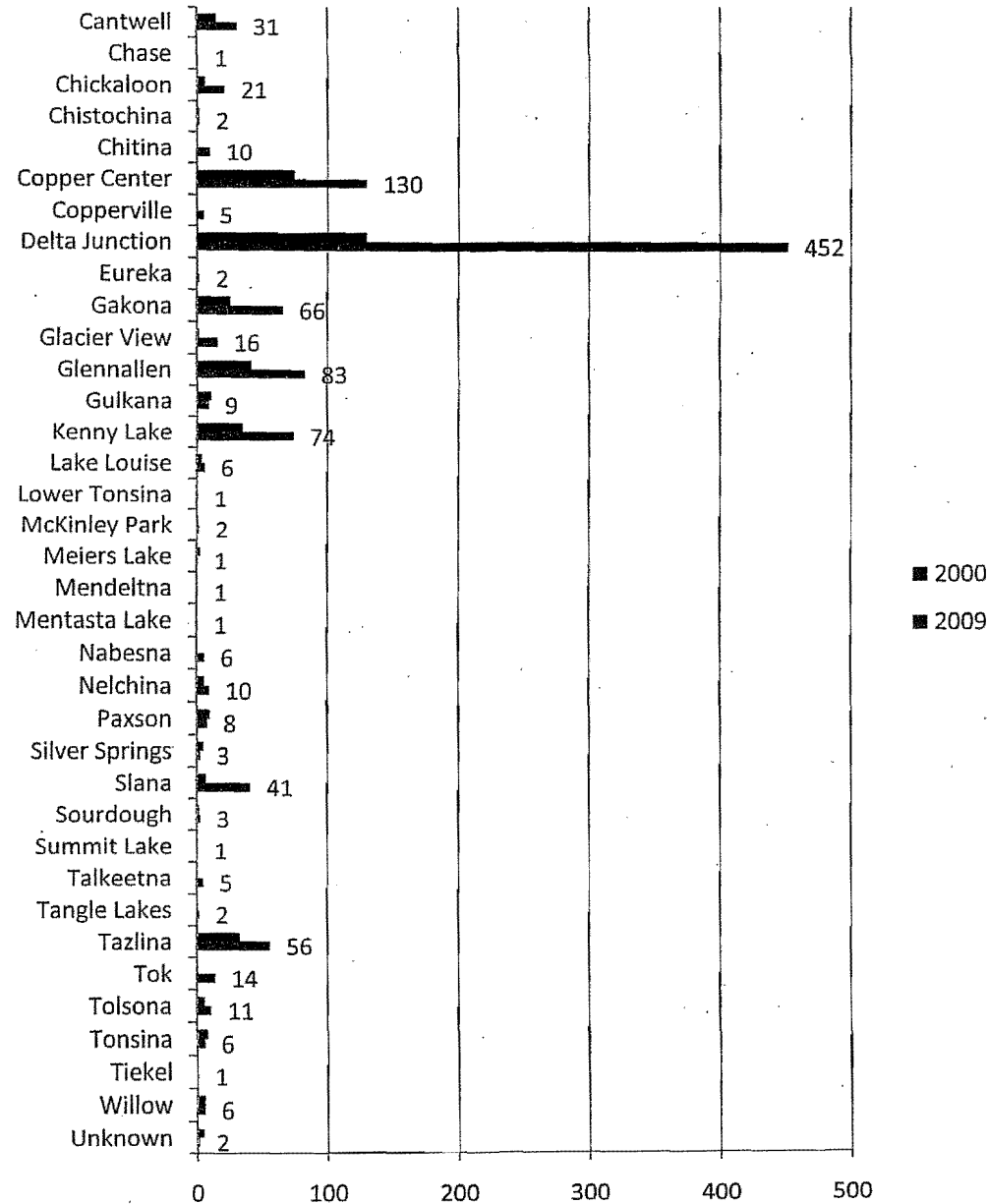
| Year | 13A | | 13B | | 13C | | 13D | | 13E | | Unknown | | Total | |
|-------------------|-----------|-------|-----------|-------|-----------|-------|-----------|-------|-----------|-------|---------|-------|-------|-------|
| Pop Objective | 3500-4200 | | 5300-6300 | | 2600-3500 | | 1200-1900 | | 5000-6000 | | | | | |
| Harvest Objective | 210-420 | | 310-620 | | 155-350 | | 75-190 | | 300-600 | | | | | |
| 2009 Bull: Cow | 27:100 | | 36:100 | | 42:100 | | 79:100 | | 34:100 | | | | | |
| Year | Fed | State | Fed | State | Fed | State | Fed | State | Fed | State | Fed | State | Fed | State |
| 1990 | | | 45 | | 5 | | 13 | | 7 | | 4 | | 74 | |
| 1991 | | | | | | | | | | | | | 0 | |
| 1992 | 4 | | 35 | | 2 | | 8 | | 2 | | 1 | | 52 | |
| 1993 | 4 | | 25 | | 1 | | 11 | | 5 | | 3 | | 49 | |
| 1994 | 4 | | 20 | | 1 | | 3 | | 2 | | 0 | | 30 | |
| 1995 | 2 | | 25 | | 0 | | 6 | | 9 | | 2 | | 44 | |
| 1996 | 1 | | 26 | | 1 | | 5 | | 6 | | 4 | | 43 | |
| 1997 | 4 | | 18 | | 1 | | 6 | | 11 | | 3 | | 43 | |
| 1998 | 3 | | 17 | | 0 | | 9 | | 6 | | 6 | | 41 | |
| 1999 | 1 | | 40 | | 0 | | 12 | | 9 | | 5 | | 67 | |
| 2000 | 1 | 115 | 29 | 148 | 0 | 101 | 10 | 77 | 2 | 96 | 3 | 25 | 45 | 562 |
| 2001 | 1 | 122 | 24 | 125 | 0 | 63 | 7 | 59 | 3 | 86 | 2 | 13 | 37 | 468 |
| 2002 | 1 | 169 | 39 | 163 | 0 | 80 | 5 | 62 | 5 | 90 | 3 | 10 | 53 | 574 |
| 2003 | 0 | 175 | 4 | 179 | 1 | 71 | 3 | 71 | 6 | 117 | 47 | 14 | 61 | 627 |
| 2004 | 0 | 214 | 31 | 129 | 0 | 62 | 11 | 68 | 3 | 120 | 4 | 23 | 49 | 616 |
| 2005 | 0 | 184 | 36 | 149 | 1 | 51 | 7 | 63 | 4 | 109 | 3 | 19 | 51 | 575 |
| 2006 | 0 | 225 | 30 | 172 | 1 | 57 | 9 | 68 | 5 | 156 | 2 | 14 | 47 | 692 |
| 2007 | 0 | 207 | 39 | 172 | 0 | 63 | 8 | 57 | 3 | 137 | 3 | 12 | 53 | 648 |
| 2008 | 0 | 238 | 42 | 188 | 2 | 61 | 7 | 65 | 3 | 169 | 3 | 14 | 57 | 735 |
| 2009 | 0 | 268 | 45 | 243 | 2 | 105 | 10 | 80 | 4 | 164 | 0 | 2 | 61 | 862 |
| 2010 | 2 | 275 | 62 | 235 | 1 | 98 | 10 | 56 | 1 | 164 | 0 | 6 | 76 | 834 |

 = Federal harvest
 = State harvest

Unit 13 moose harvest by agency



GMU 13 Federal Subsistence Moose Hunter Residency





GMU 13 Federal Nelchina caribou hunt

