

Overview of Sport Fisheries in the Anchorage Management Area



Brittany Blain-Roth
Anchorage Area Manager
Division of Sport Fish
ADF&G Anchorage Office

RC 3 & Tab 8

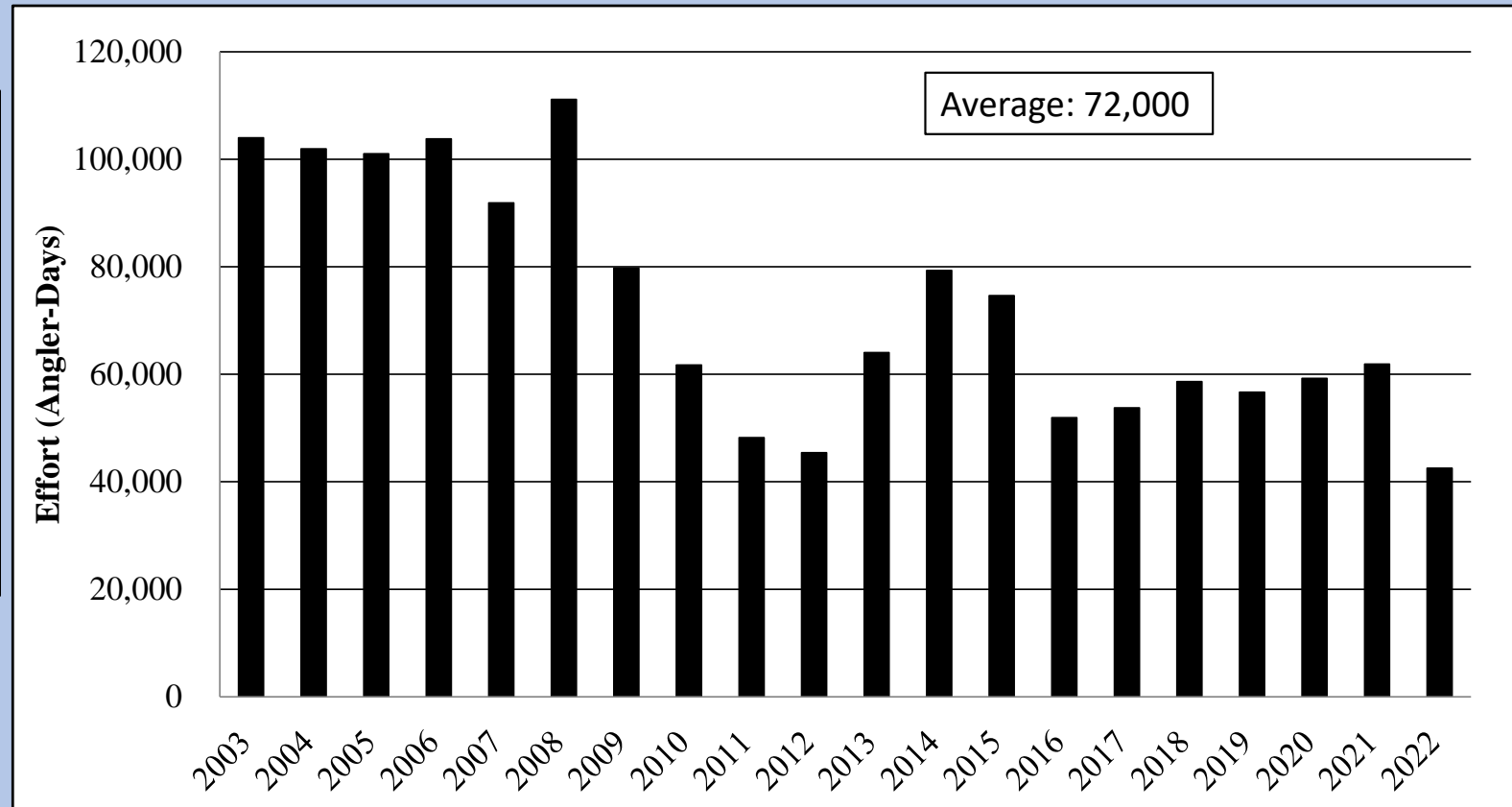
Anchorage Bowl Management Area (AMA)

All waters draining into the east side of Knik Arm south of, and including, the Eklutna River drainage, and all waters draining into the north and west sides of Turnagain Arm, and all waters draining into the south side of Turnagain Arm east of, and including Ingram Creek.

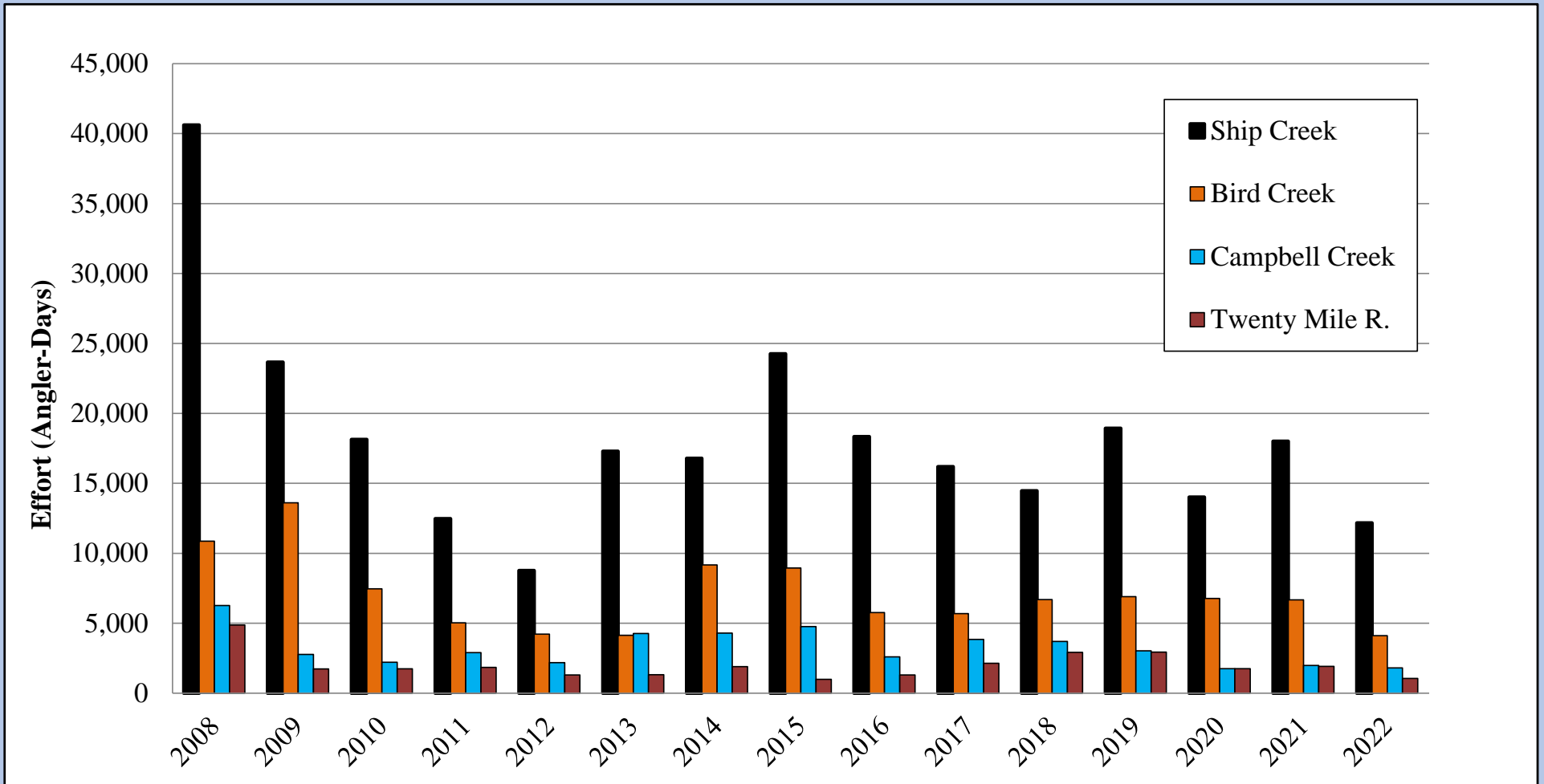


Anchorage Management Area: Sport Effort

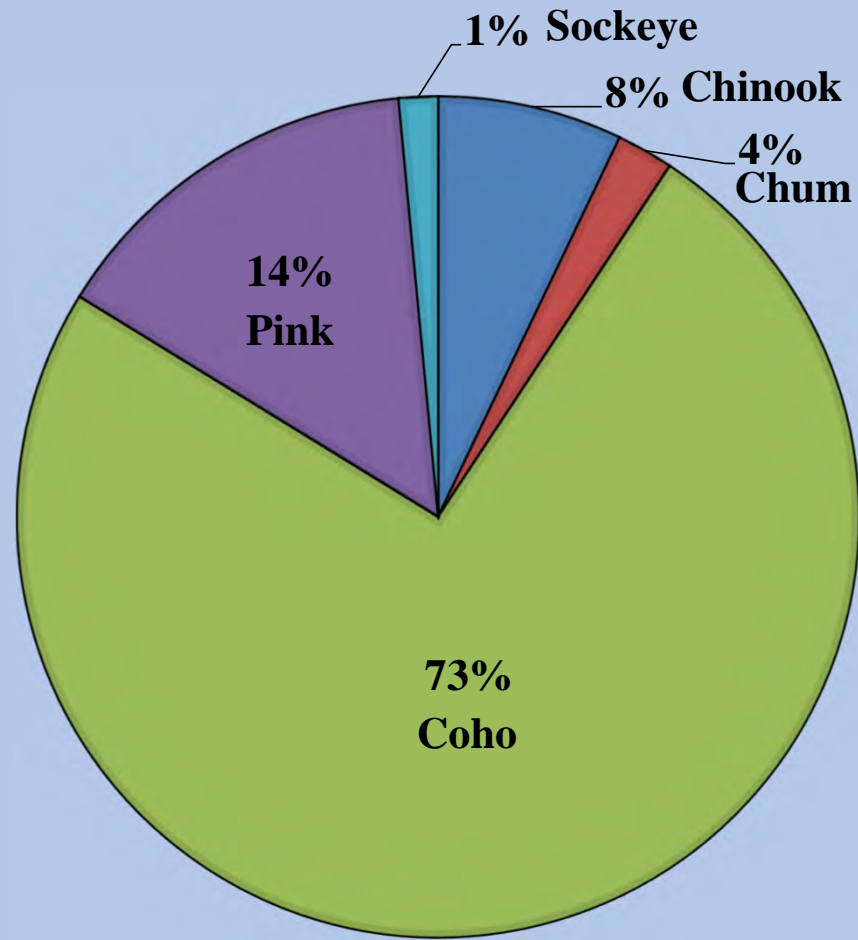
- 98% in freshwater
- 55% of the effort in streams
(versus stocked lakes)



Sport Effort: Anchorage Streams



AMA Streams: Sport Harvest of Salmon



Year	Chinook salmon		Chum salmon		Coho salmon		Pink salmon		Sockeye salmon		Total	
	Catch	Harvest	Catch	Harvest	Catch	Harvest	Catch	Harvest	Catch	Harvest	Catch	Harvest
2013	1,304	824	3,511	2,053	7,641	6,190	9,568	2,447	172	28	22,196	11,542
2014	1,382	882	3,737	541	13,939	9,430	12,941	1,473	656	288	32,655	12,614
2015	3,077	1,820	1,742	194	19,218	15,099	19,236	2,382	342	266	43,615	19,761
2016	2,826	1,999	1,759	226	6,198	5,069	5,271	631	423	16	16,477	7,941
2017	1,473	656	3,391	509	17,500	13,049	23,062	2,331	992	145	46,418	16,690
2018	567	470	1,747	157	14,887	12,058	8,769	1,055	451	193	26,421	13,933
2019	1,814	1,012	3,009	263	13,380	11,010	23,945	3,249	495	161	42,643	15,695
2020	945	574	1,792	451	9,349	7,527	14,709	2,336	309	218	27,104	11,106
2021	2,518	1,601	1,019	86	15,744	12,708	22,447	2,507	385	259	42,113	17,161
2022	902	497	1,950	294	9,344	7,764	7,259	1,014	496	206	19,951	9,775
10-year Avg (2013–2022)	1,681	1,034	2,366	477	12,720	9,990	14,721	1,943	472	178	31,959	13,622



Ship Creek



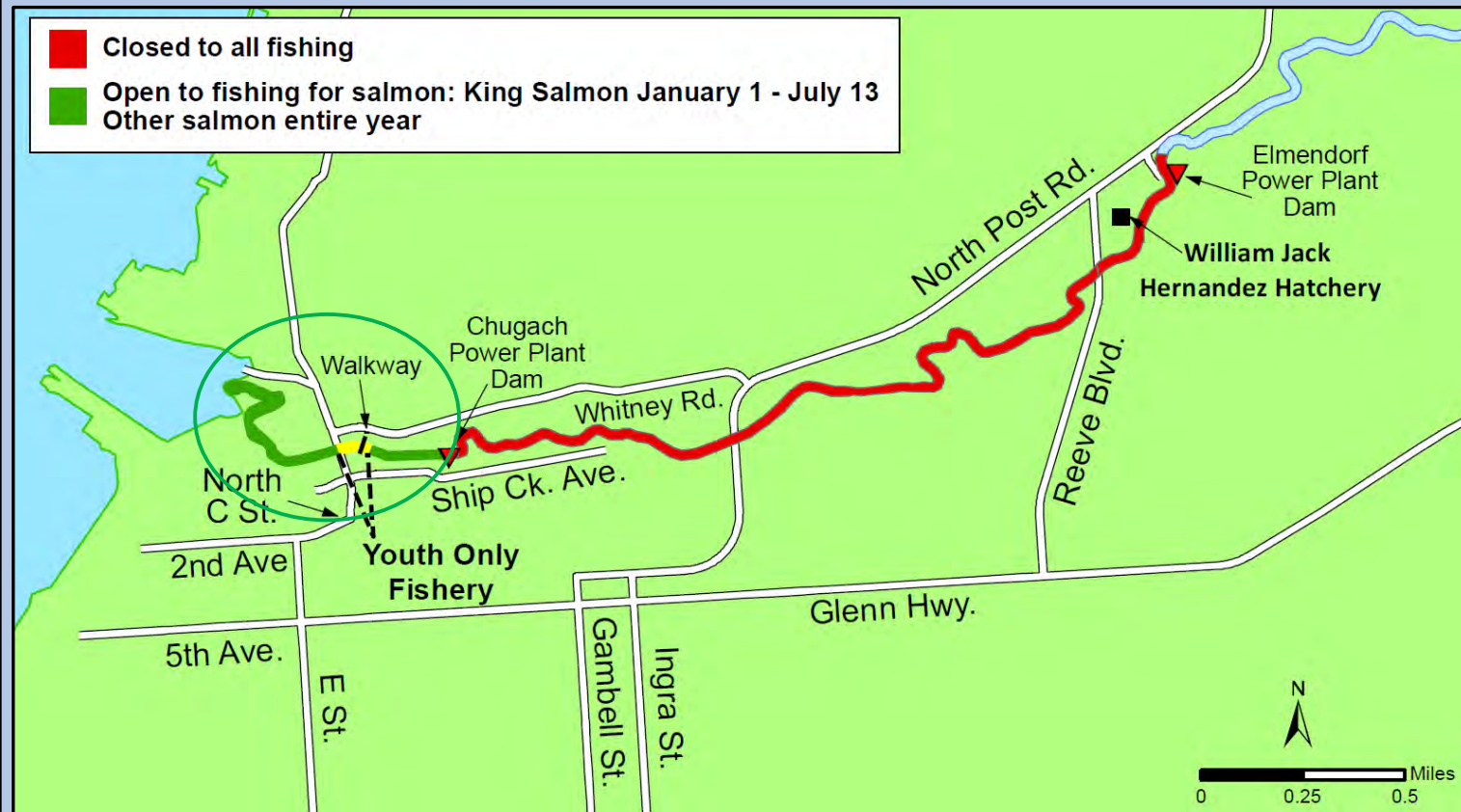
Ship Creek

- King salmon:

- 1 per day (>20")
- No fishing after harvesting a king salmon
- Annual limit: 5
- Closes to retention on July 14
- May 15 – July 13: only open 6am–11pm

- Other salmon:

- 3 per day (>16")
- All may be coho



Proposal 250: Ship Creek King Salmon

(submitted by ADF&G)

-Extend the open season



- 90% of the king salmon are through the fishery by July 14
- Monitored inseason by ground-based stream surveys and hatchery raceway counts



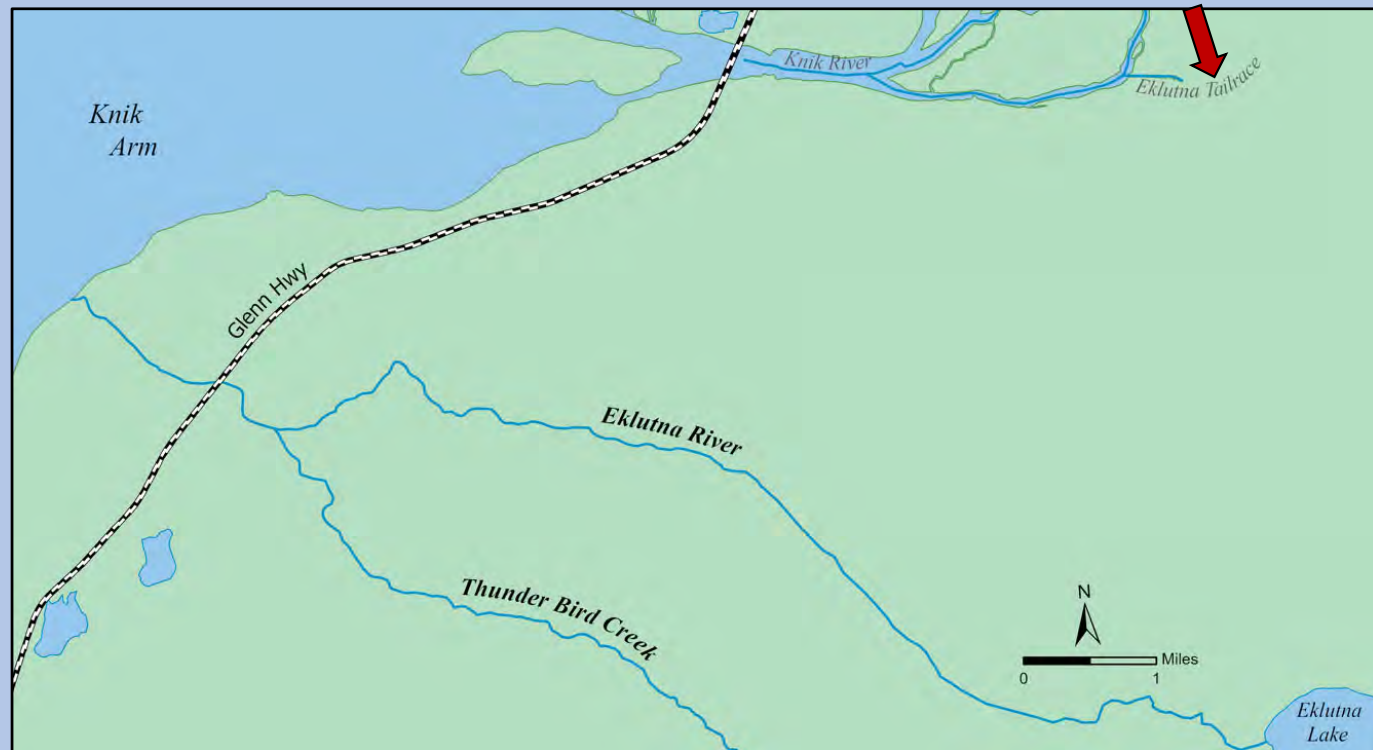
Ship Creek Emergency Orders 2014–2023

Year	Effective dates	Emergency order #	Regulatory change
2014	July 7–July 31	2-KS-2-34-14	Closed sport fishing for all species on all of Ship Creek for the remainder of the king salmon season to protect king salmon.
2015			No action
2016			No action
2017	July 11–July 31	2-KS-2-26-17	Increased the bag and possession limit from 1 to 2 for king salmon in Ship Creek and extended the sportfishing season for king salmon on Ship Creek through July 31, 2017.
2018	June 29–July 13	2-KS-2-26-18	Closed sport fishing for all species on all of Ship Creek for the remainder of the king salmon season to protect king salmon.
2019			No action
2020			No action
2021	July 14–July 31	2-KS-2-44-21	Increased the bag and possession limit from 1 to 2 for king salmon in Ship Creek and extended the sportfishing season for king salmon on Ship Creek through July 31, 2021.
2022			No action
2023			No action

Proposal 251: Eklutna River Drainage

-Close to the retention of
sockeye and coho salmon

- Open to salmon fishing, except king salmon
- No assessment by the department
- Limited harvest information from the SWHS, due to low effort



Proposal 252: Turnagain Arm Streams Coho Salmon

-Increase coho salmon bag limits from 2 to 3 fish

- Open to salmon fishing, except king salmon (seasonal closures)
- Assessed by SWHS
- Aerial survey (1994–2006)
- Limited harvest information from the SWHS



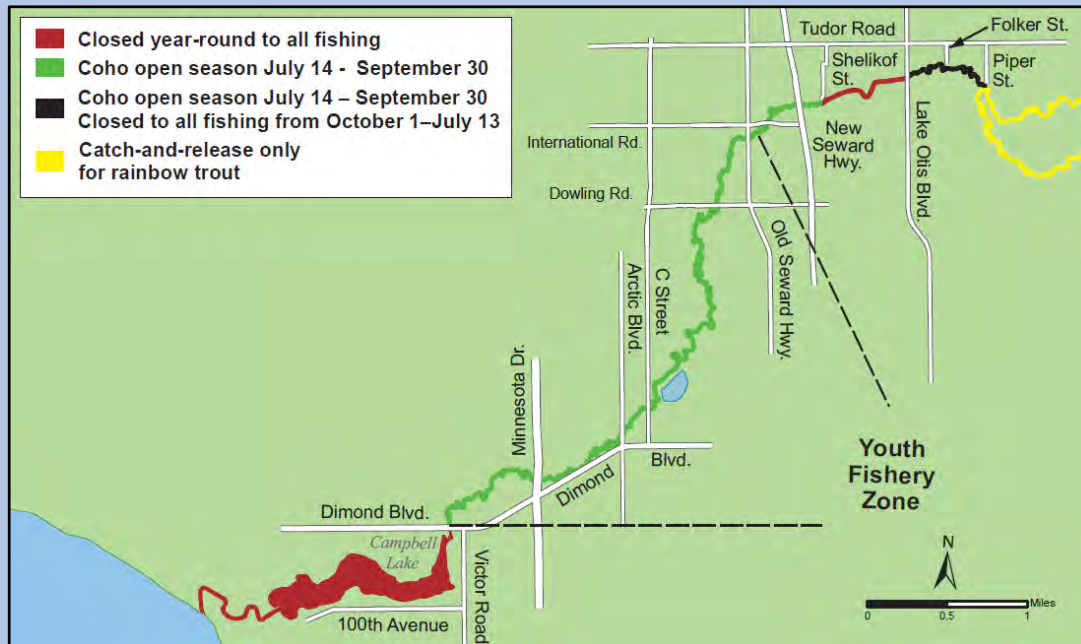
Turnagain Arm Streams: Coho salmon



Year	Swanson River	Resurrection Creek	Twenty Mile River
2003	3,087	125	2,116
2004	1,466	138	3,012
2005	2,367	39	1,334
2006	2,028	121	1,739
2007	1,660	289	719
2008	2,814	195	4,116
2009	1,790	103	1,329
2010	1,074	422	1,214
2011	1,348	0	1,087
2012	264	36	639
2013	815	63	895
2014	702	233	784
2015	766	200	503
2016	1,158	237	1,181
2017	1,688	161	1,249
2018	1,203	208	2,474
2019	2,166	338	2,393
2020	893	179	1,991
2021	1,436	611	1,763
2022	561	197	521
Average			
2003 - 2012	1,790	147	1,731
2013 - 2022	1,139	243	1,375

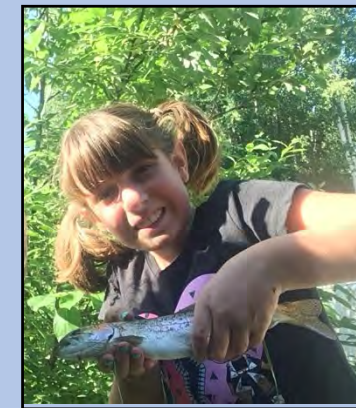
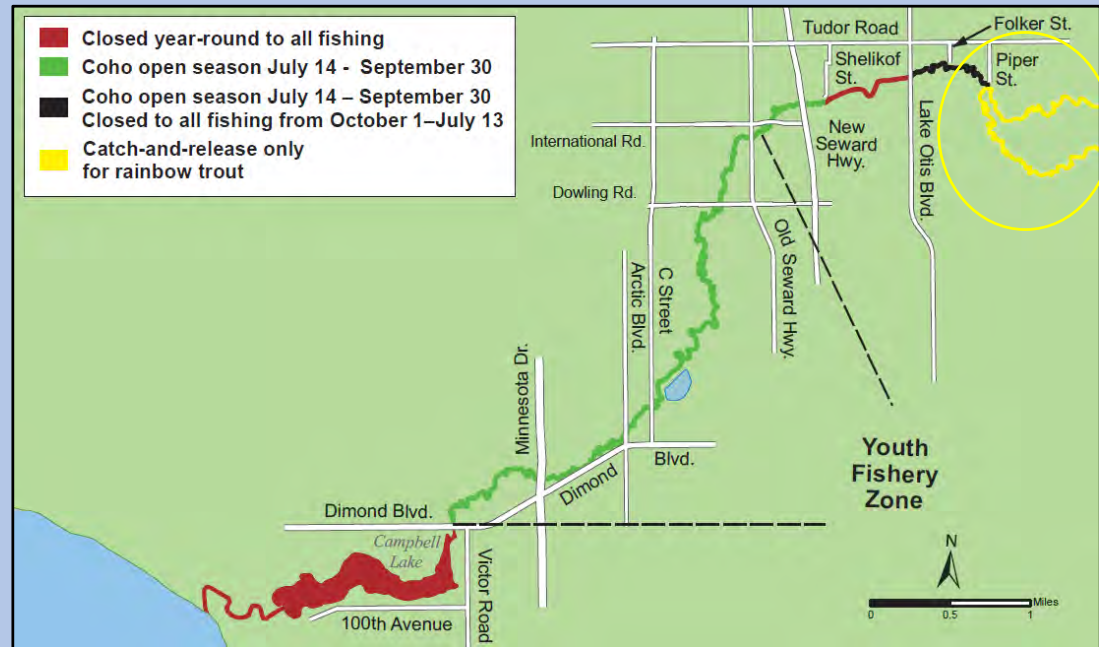
Campbell Creek

- *Special Management Area for Rainbow Trout (5 AAC 59.185)*
- Closed to retention
- Spawning closure: April 15 – June 14
- Only single hooks allowed in this area
- Assessed by SWHS



Proposal 253: Campbell Creek

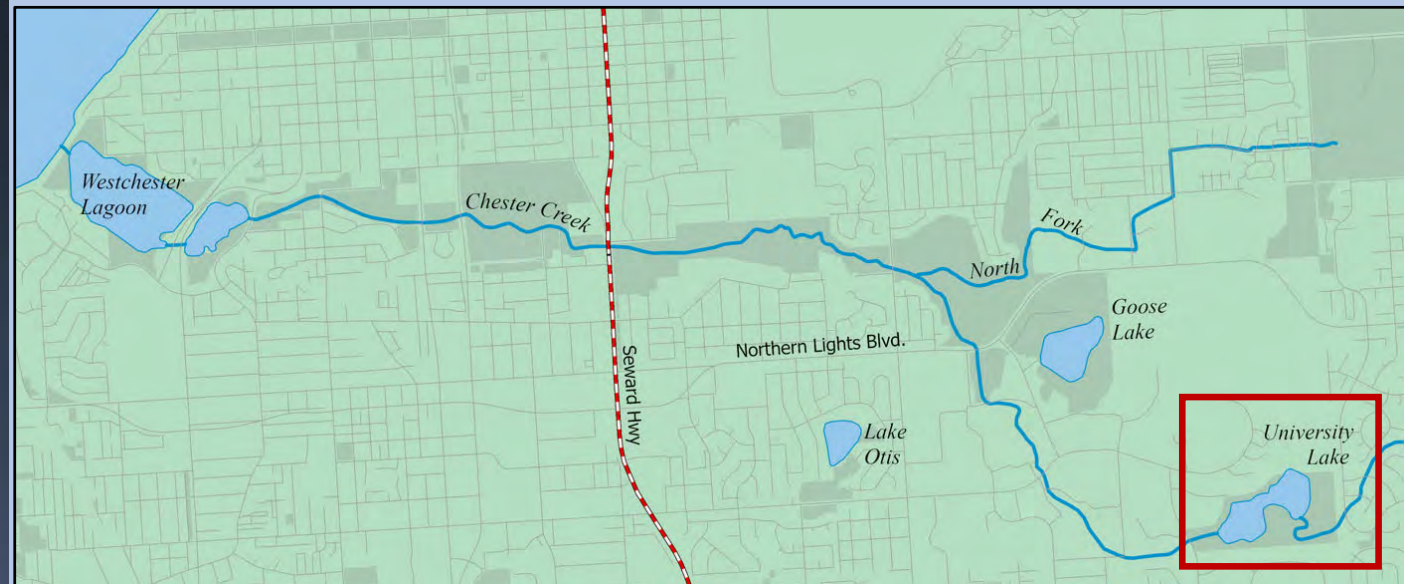
-Allow the use of two unbaited, single-hook, artificial flies in a portion of the creek that is catch-and-release only for trout, and closed to salmon fishing



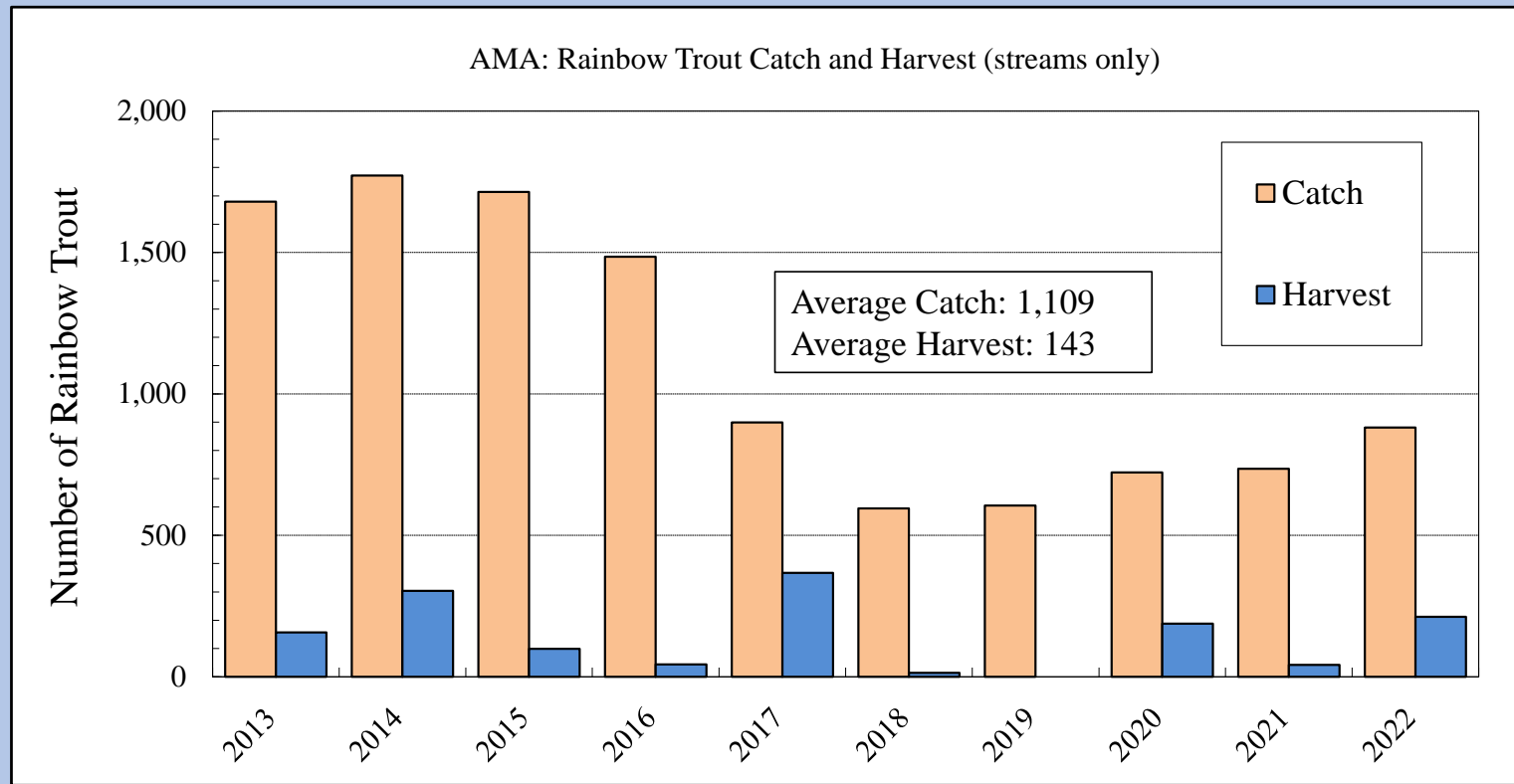
Proposal 254: Chester Creek

-Allow the use of two unbaited, single-hook, artificial flies in a portion of the creek that is catch-and-release only for trout, and closed to salmon fishing

- Open to retention of trout (excluding spawning season)
- Closed to all salmon fishing
- Multiple hooks and bait allowed in all open waters
- Assessed by SWHS

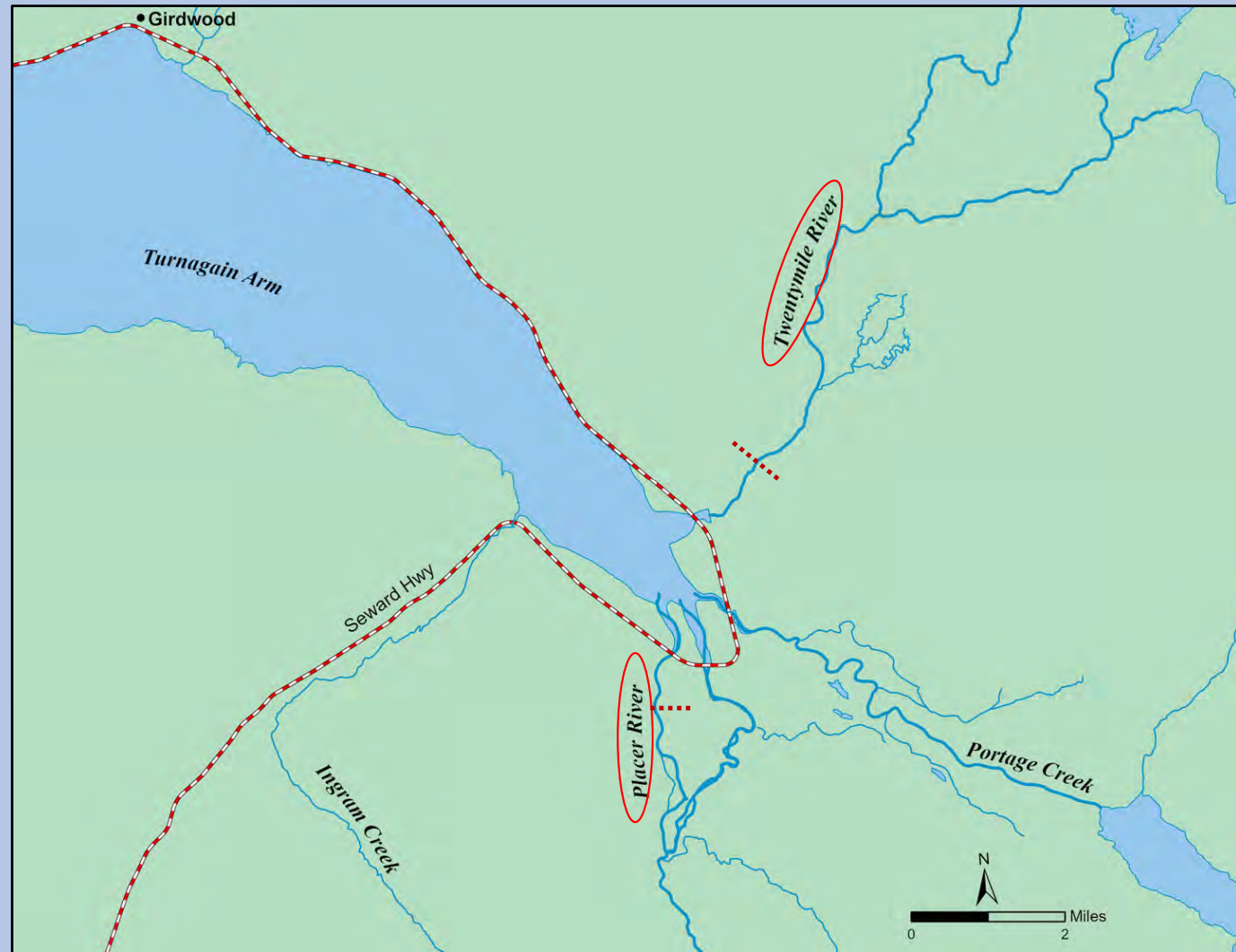


AMA: Rainbow Trout Catch and Harvest



Proposal 255: Twenty Mile and Placer Rivers

- Create a personal use dip net fishery for salmon in the Twenty Mile and the Placer Rivers
 - Limited to one mile upstream of the Hwy
 - Shore only
 - Limited days



Proposal 255: Twenty Mile and Placer Rivers

- Limited harvest information
- Assessed by SWHS



Twenty Mile River								
	Sockeye Salmon		Coho Salmon		Pink Salmon		Chum Salmon	
Year	Catch	Harvest	Catch	Harvest	Catch	Harvest	Catch	Harvest
2003	84	36	3,039	2,116	109	0	357	25
2004	291	88	5,048	3,012	163	16	103	70
2005	139	106	1,632	1,334	93	46	0	0
2006	22	11	2,299	1,739	384	0	253	0
2007	172	81	998	719	299	88	102	0
2008	275	0	7,336	4,116	2,043	63	926	0
2009	156	48	2,052	1,329	185	0	69	11
2010	180	32	1,358	1,214	450	27	903	32
2011	0	0	1,281	1,087	292	56	22	0
2012	66	33	939	639	432	134	342	0
2013	0	0	1,304	895	60	0	58	0
2014	155	0	1,116	784	287	0	0	0
2015	83	83	685	503	58	0	19	0
2016	35	0	1,260	1,181	36	0	45	0
2017	676	0	2,349	1,249	2,190	19	123	18
2018	20	20	2,805	2,474	567	31	59	0
2019	0	0	2,449	2,393	1,055	0	93	44
2020	45	0	2,451	1,991	332	9	251	0
2021	259	259	2,419	1,763	0	0	16	16
2022	0	0	521	521	309	0	229	161
Average	133	40	2,167	1,553	467	24	199	19

Questions?

Additional Reports:

- *Sport fisheries in the Anchorage Management Area in 2022 to inform the Alaska Board of Fisheries in 2024*

<https://www.adfg.alaska.gov/FedAidPDFs/FMR24-01.pdf>

