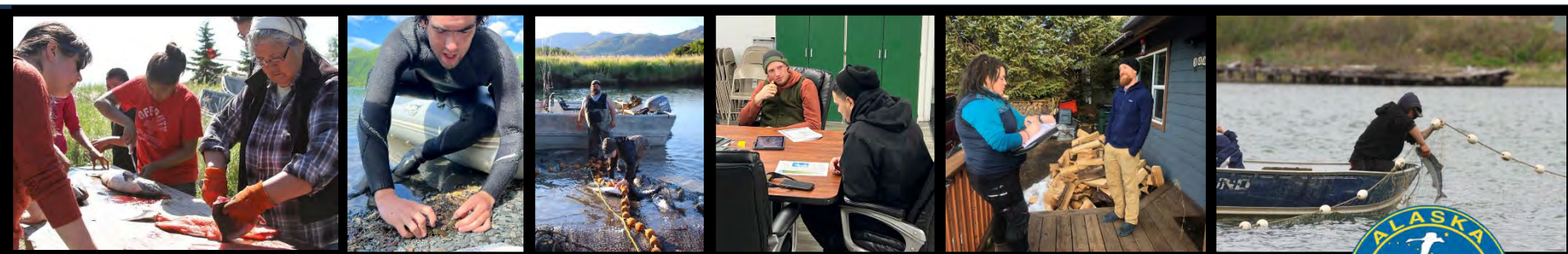




Subsistence Overview


Presentation to the Alaska Board of Fisheries
Anchorage, Alaska - February 23, 2024



Jackie Keating and Lauren Sill
RC 3, Tab 5



Our mission is to scientifically gather, quantify, evaluate, and report information about customary and traditional uses of Alaska's fish and wildlife resources. AS 16.05.094

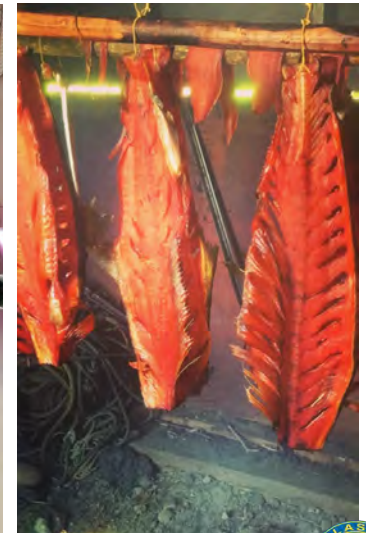
 Quantitative and qualitative research

 Most projects are partnerships

 Research is voluntary and confidential

 Inform **C&T** and **ANS** findings

Photo captions:
Participant observation in Tyonek;
Harvest area mapping in Chenega;
King salmon drying in Tyonek.



Alaska Department of Fish and Game Active Online Subsistence Surveys

Community Subsistence Information System

This dashboard is used to disseminate subsistence harvest data and technical reports for a community.

For summary information about the subsistence harvests, population, demography, and economy of Alaska's rural communities, please use the Subsistence Community Profile Dashboard.

Explore

© ADF&G/Sara Germain

Photo © ADF&G/Jim Dau

Subsistence Community Profile Dashboard

Comprehensive source for summary information about the subsistence harvests, population, demography, economy and geographic location of Alaska's rural communities.

User Guide Explore

Photo © ADF&G

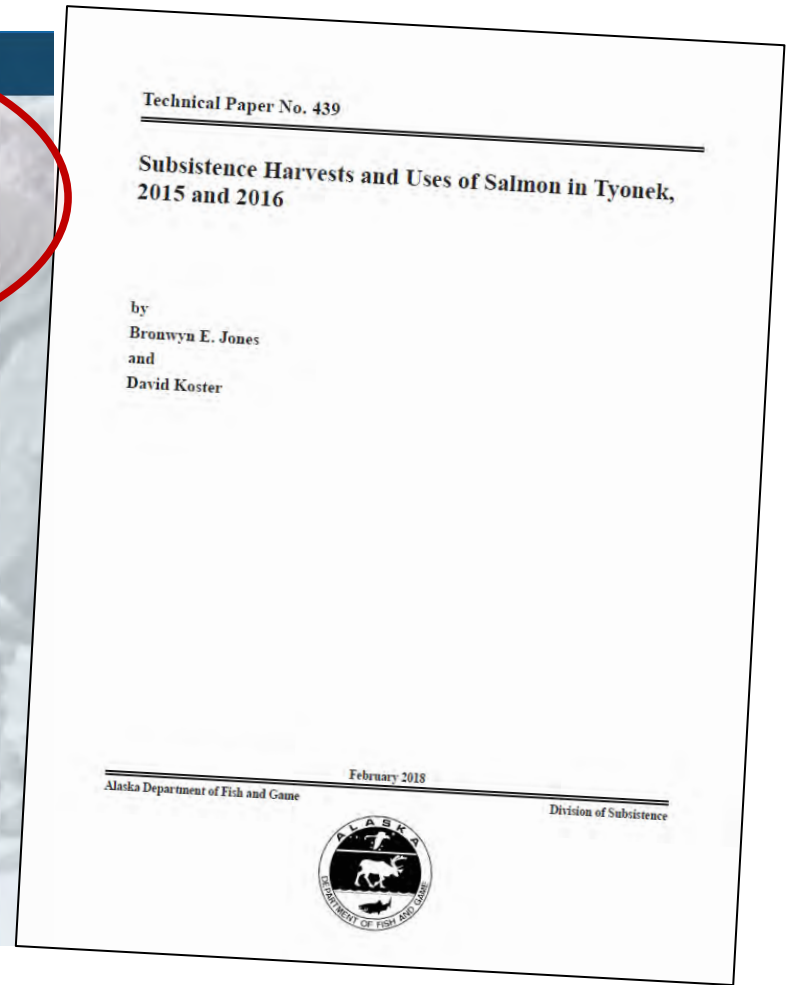
Subsistence Fisheries Data Dashboard

This dashboard provides access to Alaska's subsistence and personal use salmon fisheries data based upon subsistence and personal use permit data and harvest assessment surveys.

User Guide Explore

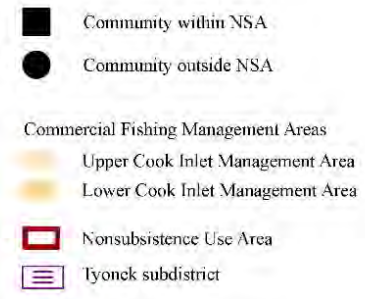
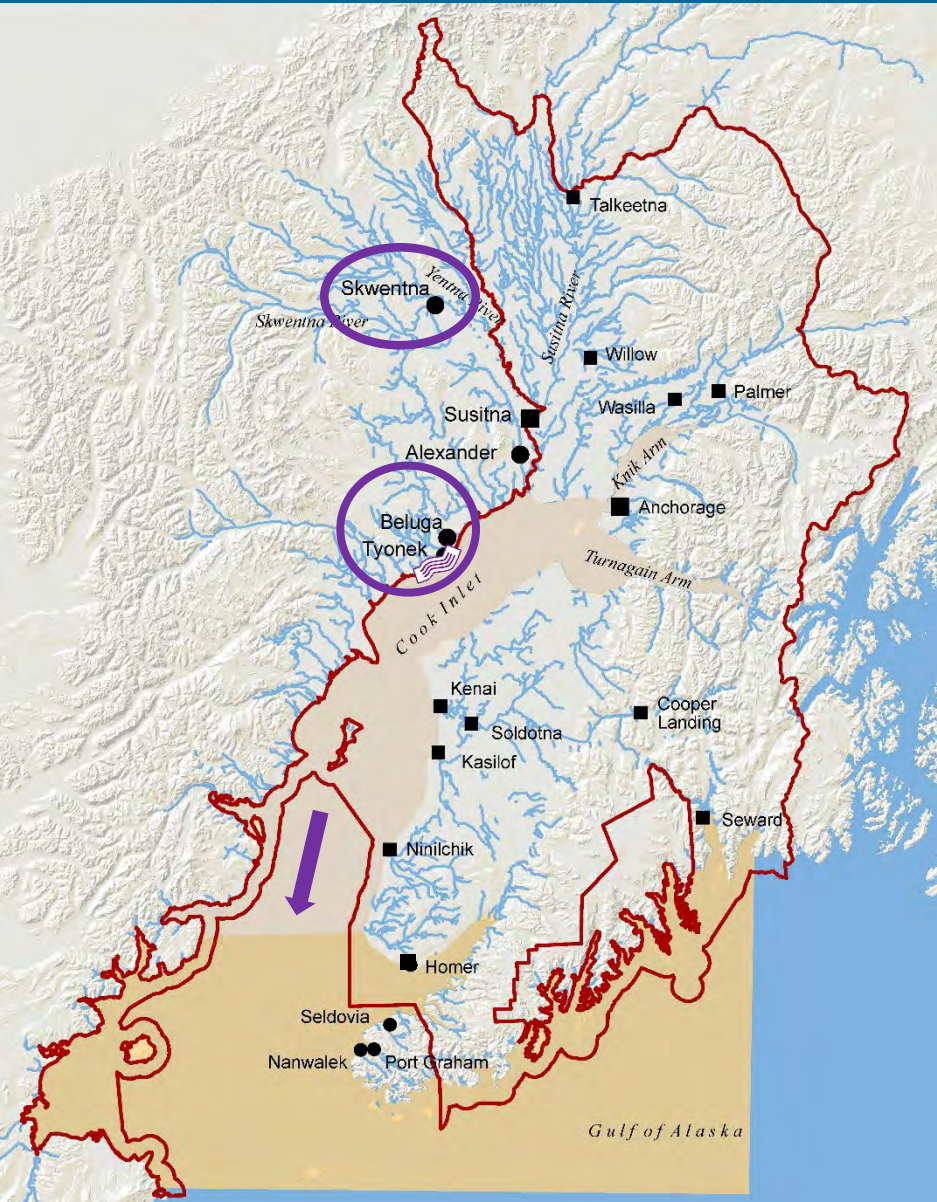
Photo © ADF&G

<http://www.adfg.alaska.gov/sb/CSIS/>



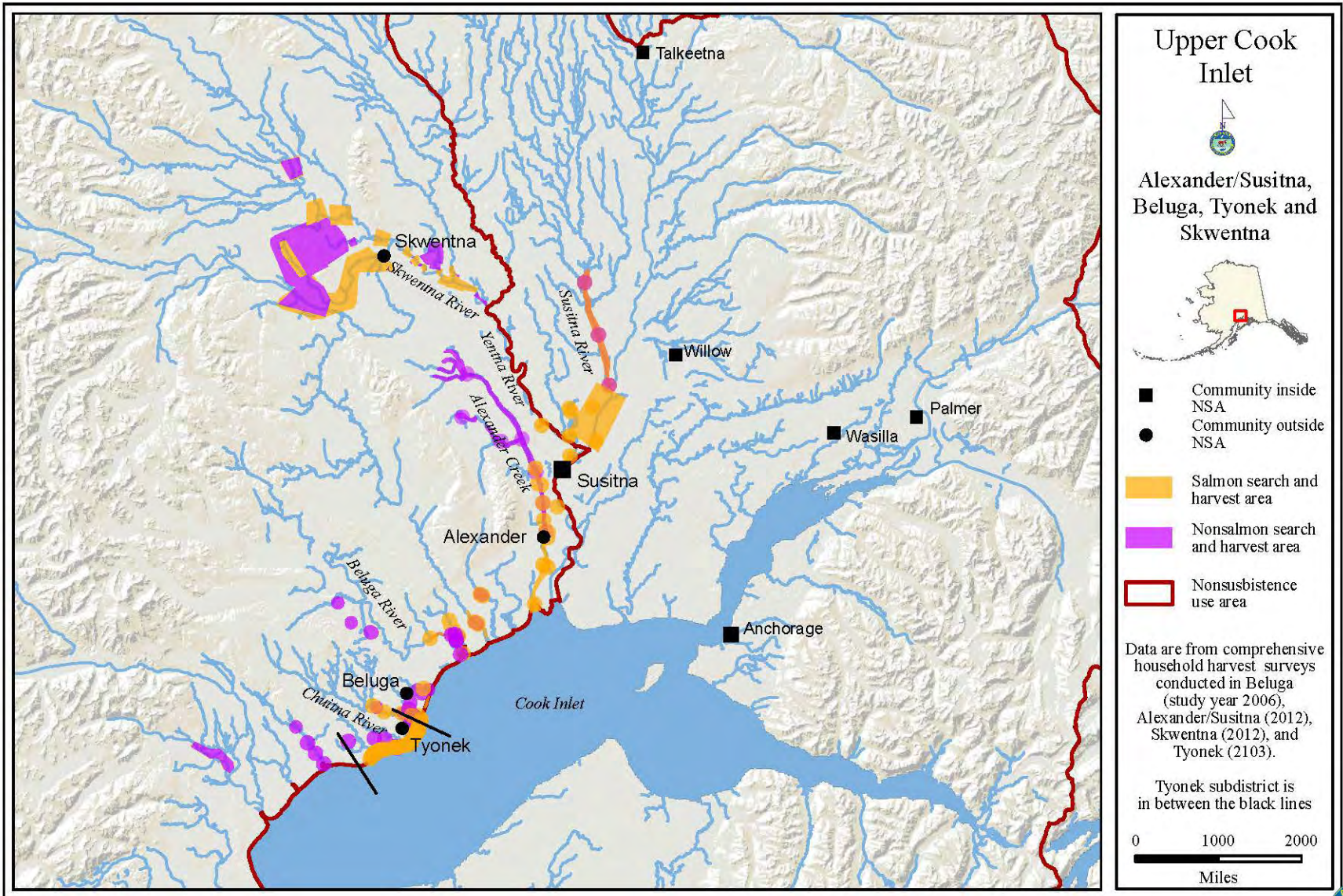
<http://www.adfg.alaska.gov/sf/publications/>



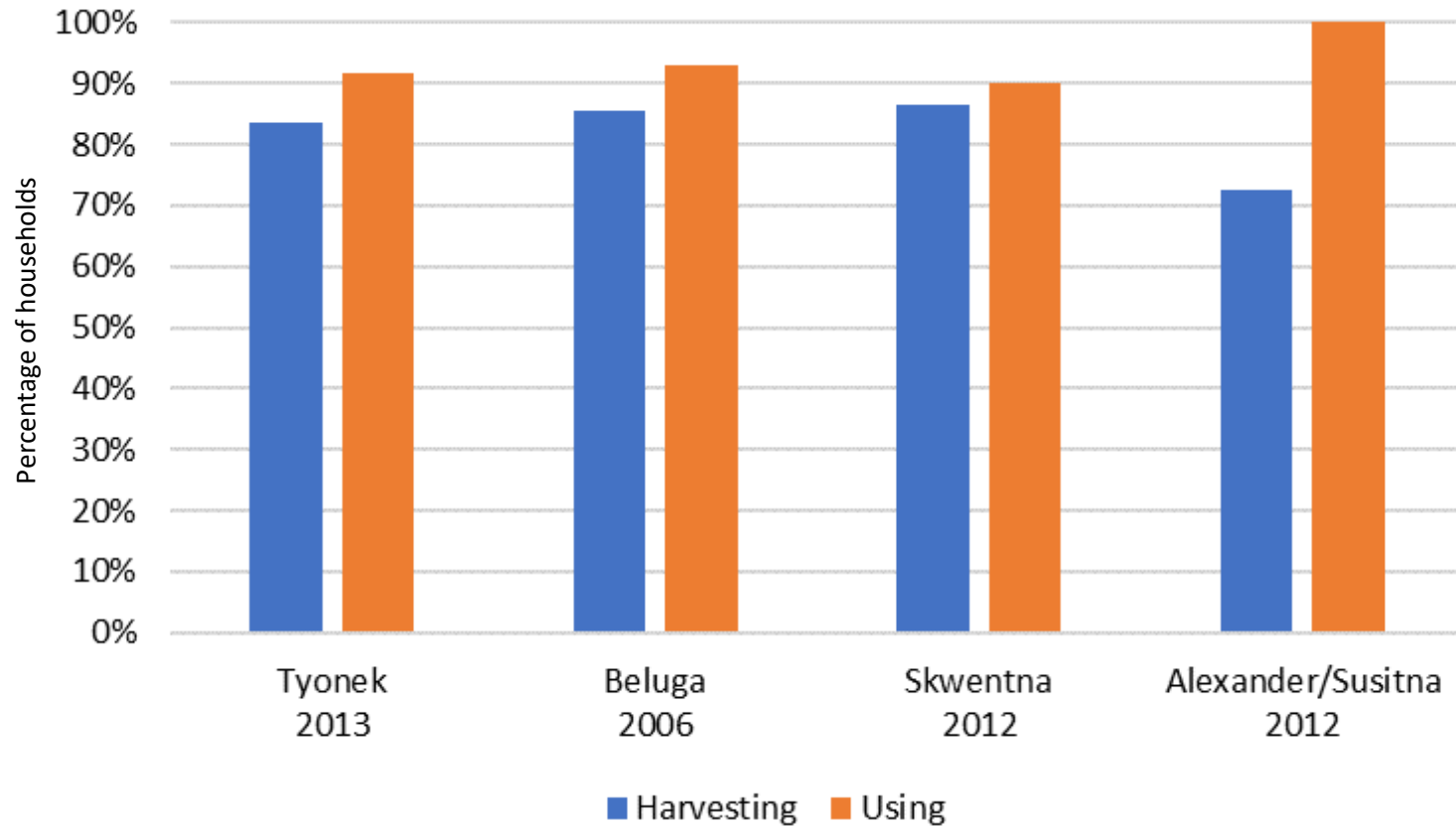


1. Tyonek Subdistrict salmon
2. Yentna River fishwheel fishery
3. Other positive C&T findings



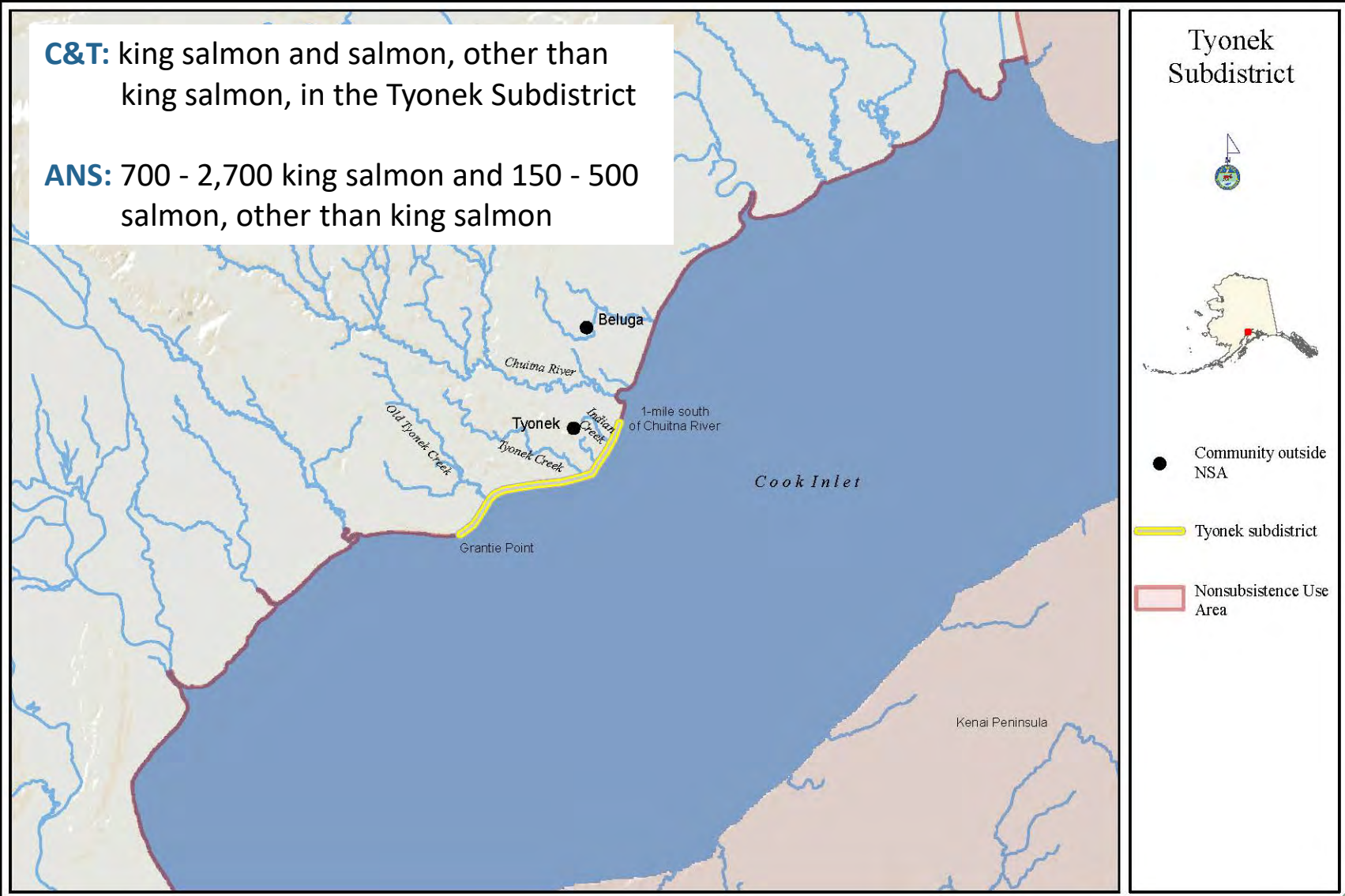


Harvest and Use of Fish



C&T: king salmon and salmon, other than king salmon, in the Tyonek Subdistrict

ANS: 700 - 2,700 king salmon and 150 - 500 salmon, other than king salmon



“Fishing is part of our heritage that can be handed down through generations. Tradition is very important.”

-Qualitative data from key respondent interviews with Tyonek knowledge holders, 2016

- In Dena’ina language, June is “**liq’aka’a’n’u**” which translates to “king salmon month”
- Families fish in the same locations annually; a stake is set in the mudflats at low tide each spring to set gillnets from the beach with a running line
- All parts of salmon are used
- Salmon are dried, smoked, rendered, fermented, and salted for preservation
- Salmon are shared throughout the community

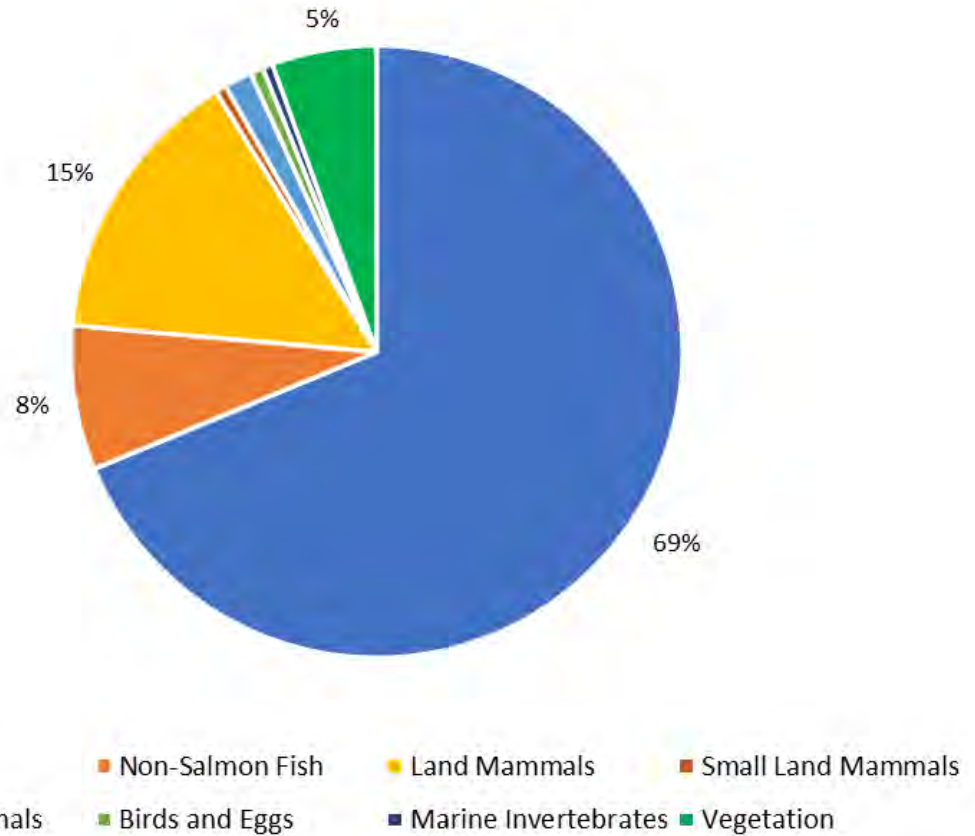


Photo: Teaching the next generation to fish, 2004. Credit: ADF&G Subsistence



Tyonek Study Years

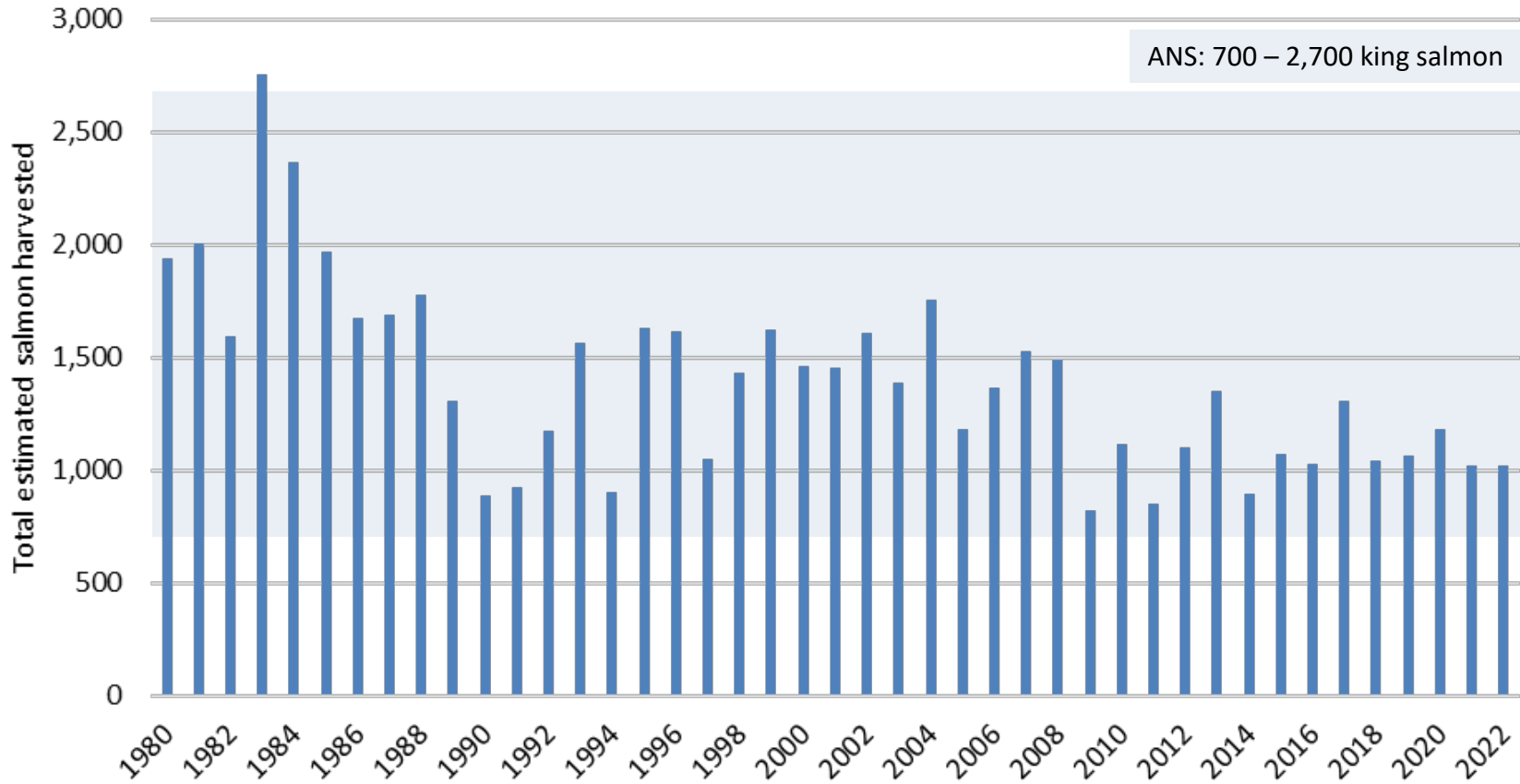
1983	Comprehensive
2006	Comprehensive
2013	Comprehensive
2015	Salmon Only
2016	Salmon Only



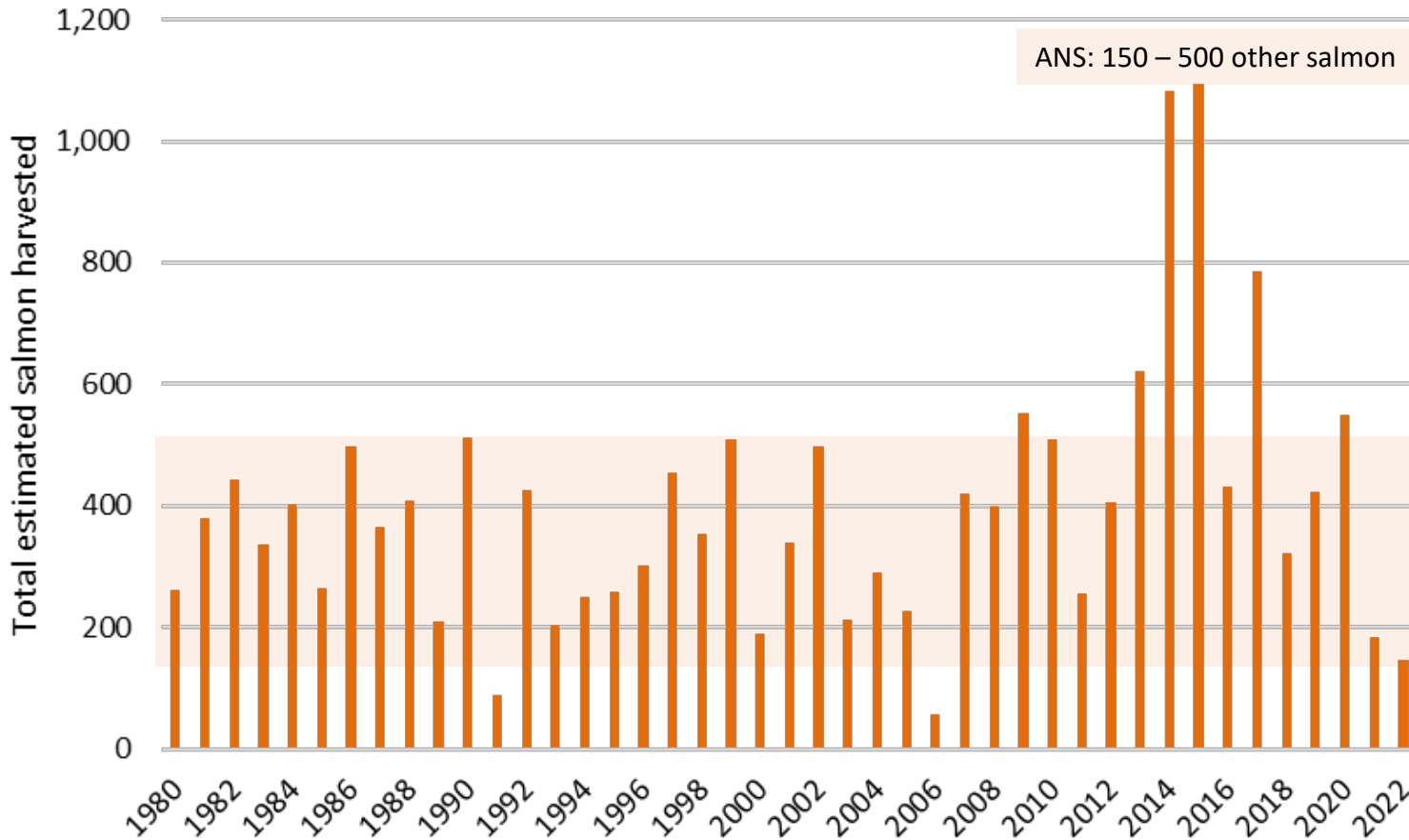
Salmon = 69% of harvest weight; 118 lbs. per capita.



Tyonek Subdistrict Subsistence King Salmon Harvest Estimates



Tyonek Subdistrict Subsistence other Salmon Harvest Estimates



Yentna Subsistence Salmon

Positive C&T for Salmon in the Yentna River drainage outside the Anchorage-Matsu-Kenai Nonsubsistence Area

ANS: 400-700 salmon, other than king salmon (no ANS finding for king salmon yet, due to lack of harvest data)




-  Salmon may only be taken in a portion of the mainstem of the river, and only with a fish wheel
-  Permits administered by Division of Sport Fish; daily reporting requirements
-  Limit of 25 salmon other than king salmon, and 5 king salmon/permit holder, plus 10 salmon other than king salmon and 2 king salmon for each dependent of the permit holder



Photo credit: ADF&G Sport Fish



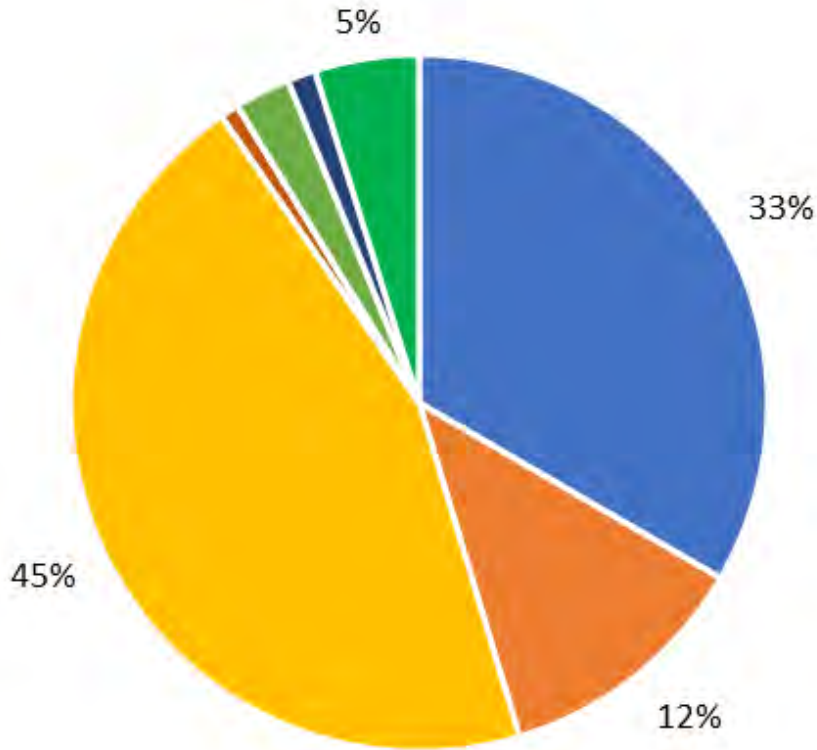
- Salmon were historically taken with fish traps, spears, dip nets, and weirs, and later gillnets and fish wheels
- Preservation methods include drying, smoking, fermenting, salting, canning, and jarring
- Documentation through the last 100 years shows an effort to efficiently harvest and preserve fish early in the season
- 50% of Skwentna households received salmon from other households during the 2012 study year



Photo: Yentna River Fish Wheel. Credit: ADF&G Sport Fish



Salmon = 33% of harvest weight; 54 lbs. per capita.

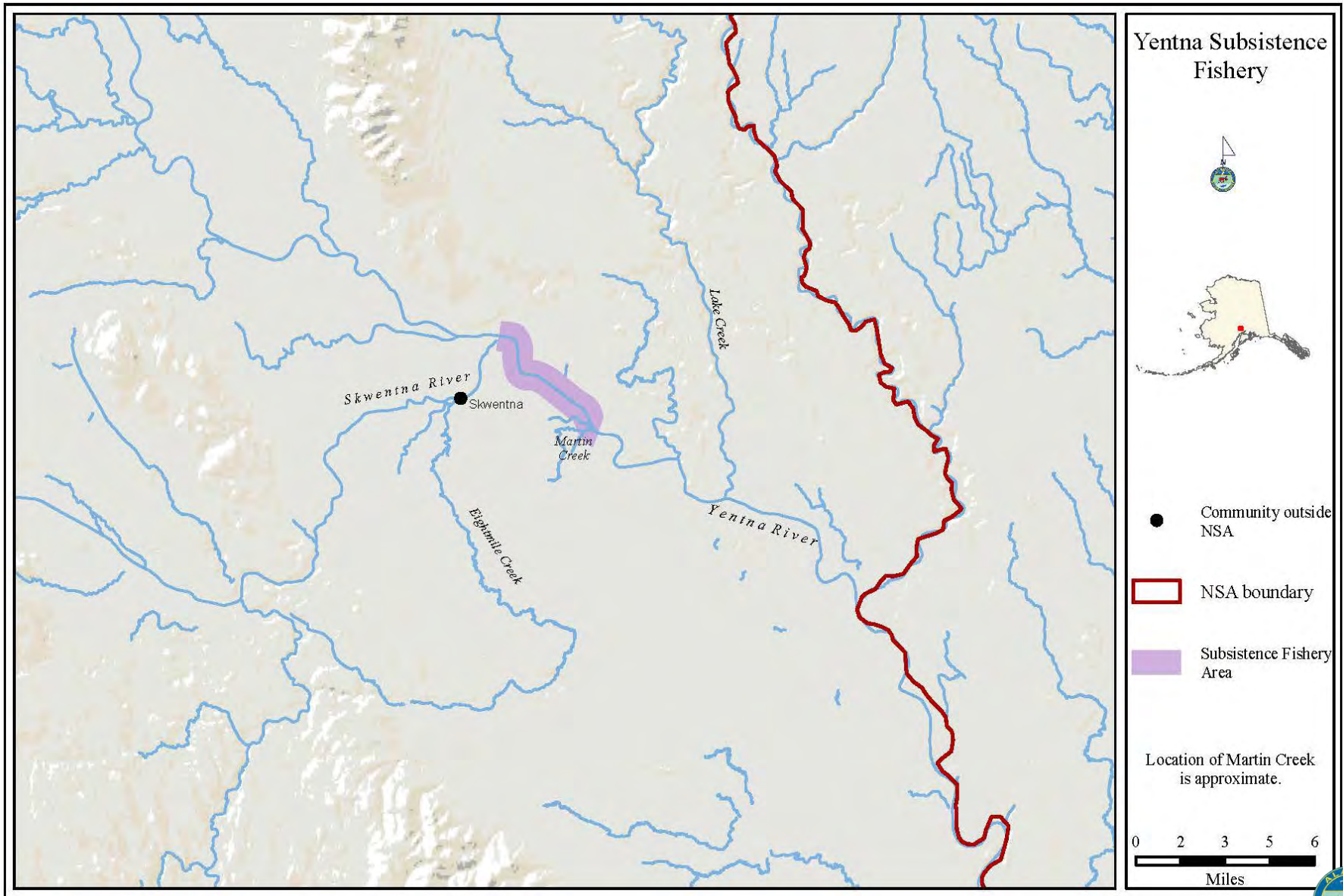


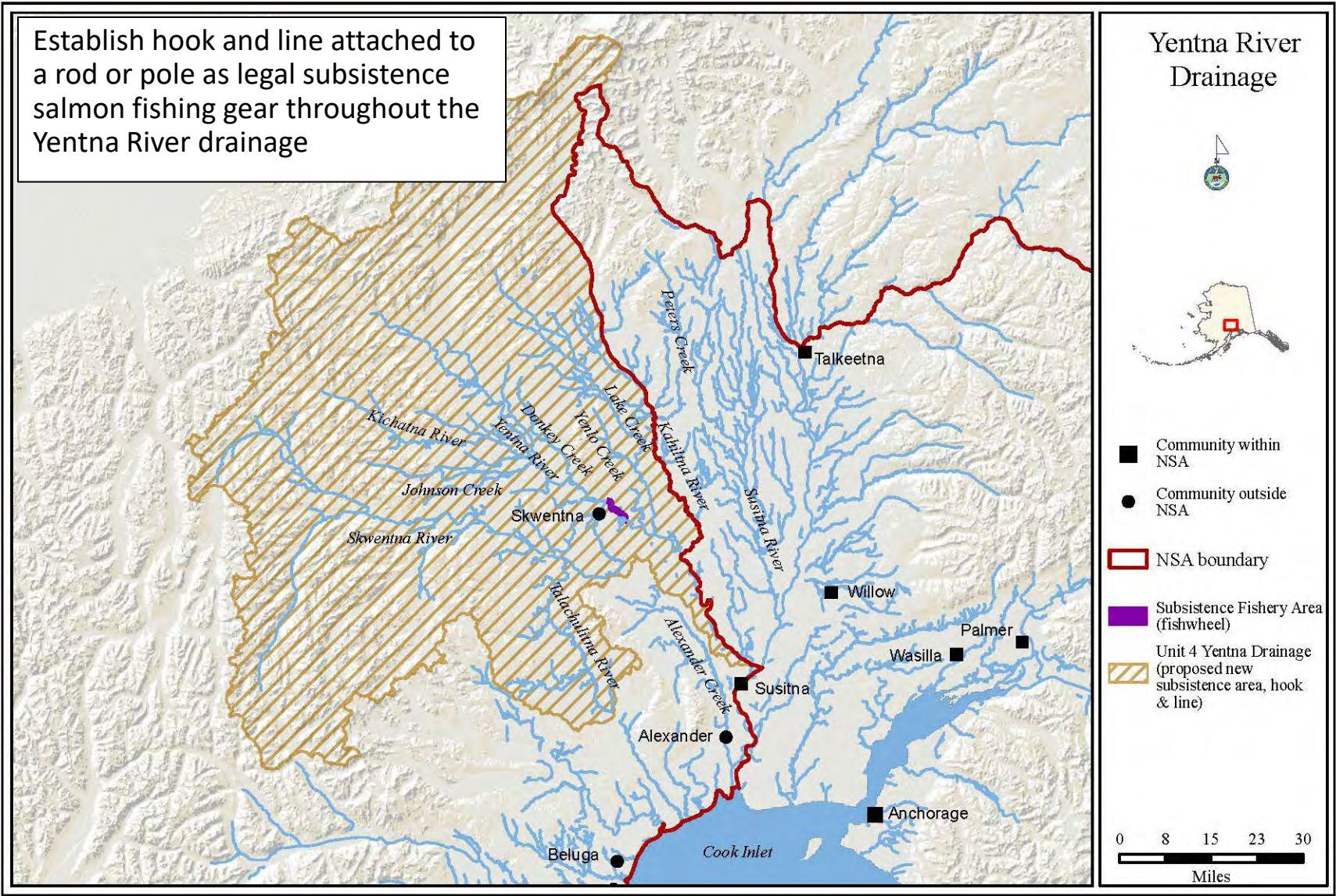
- Salmon
- Non-Salmon Fish
- Land Mammals
- Small Land Mammals
- Marine Mammals
- Birds and Eggs
- Marine Invertebrates
- Vegetation

“Salmon is just as important as the traditional subsistence moose in Skwentna, if not more. Everyone gets some salmon, but if moose populations are down, maybe not everyone gets moose. But everyone gets some salmon.”

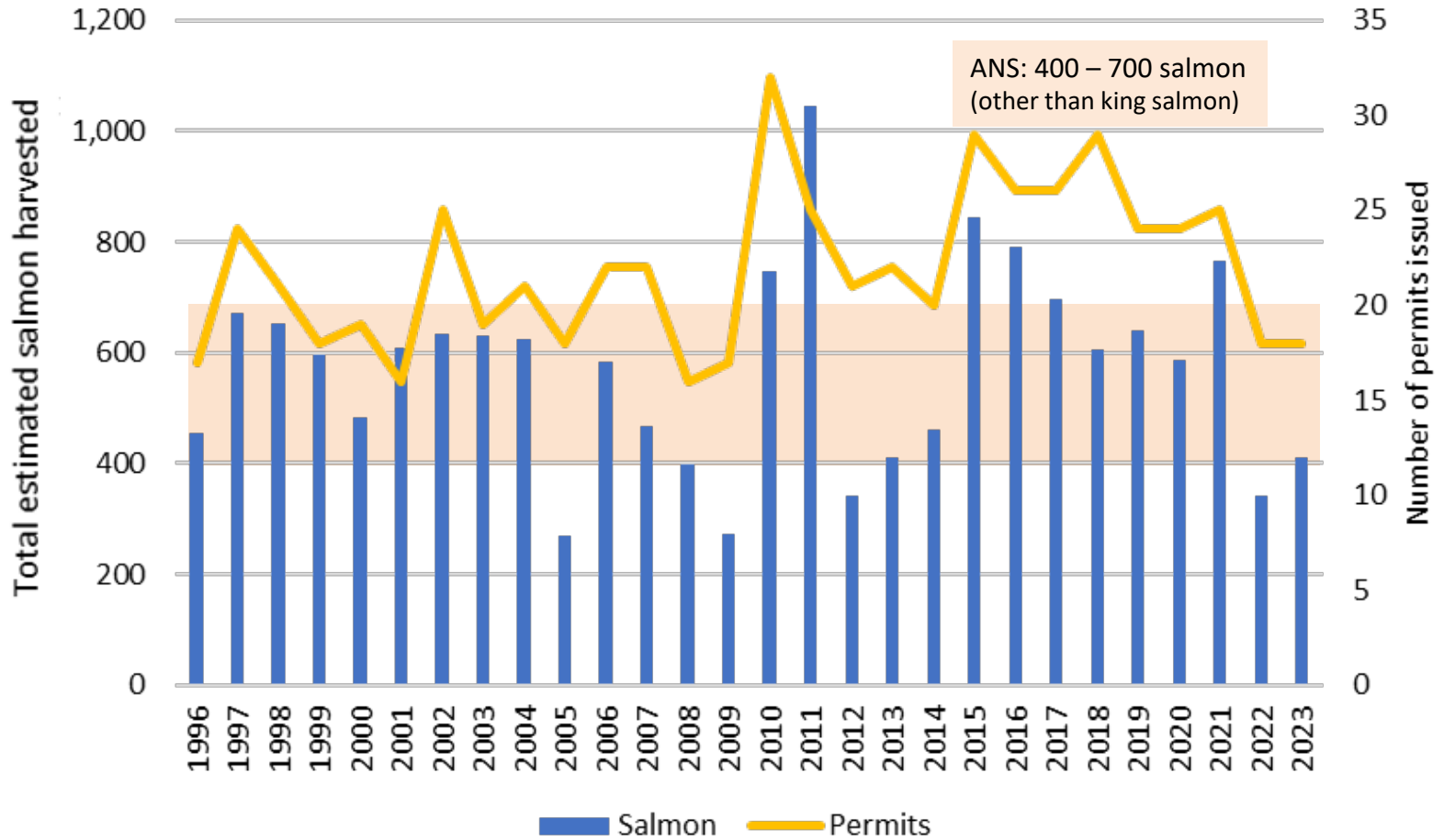
— Qualitative data from key respondent interviews with Skwentna knowledge holders, 2016



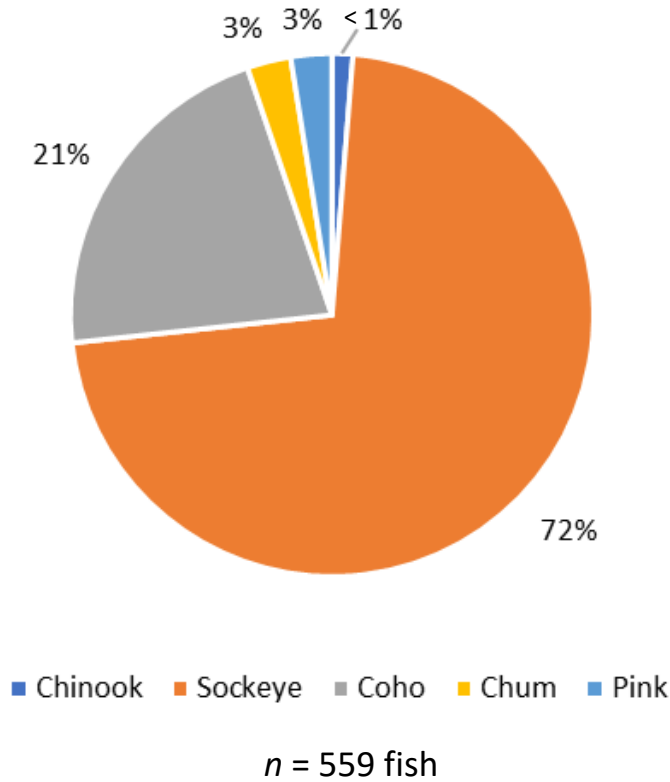




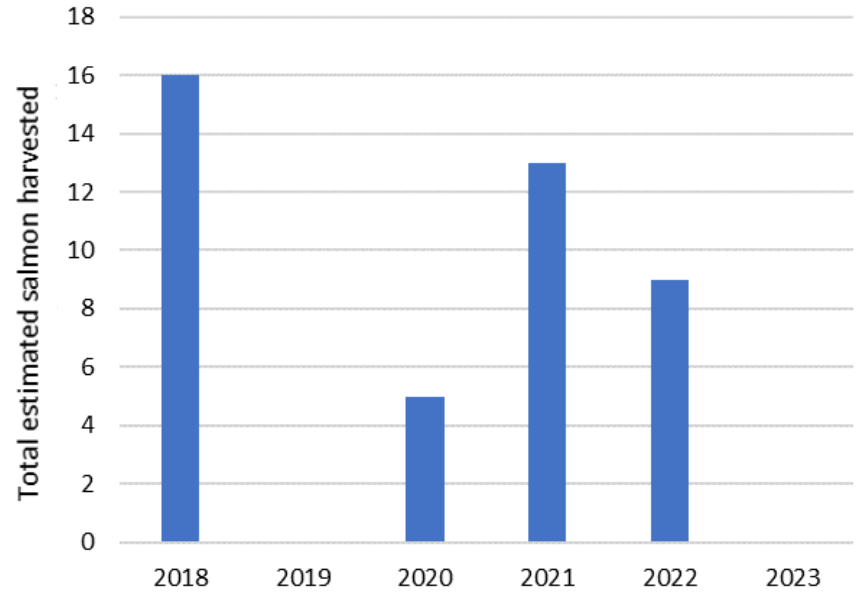
Yentna Permit Data: Total Salmon Harvest



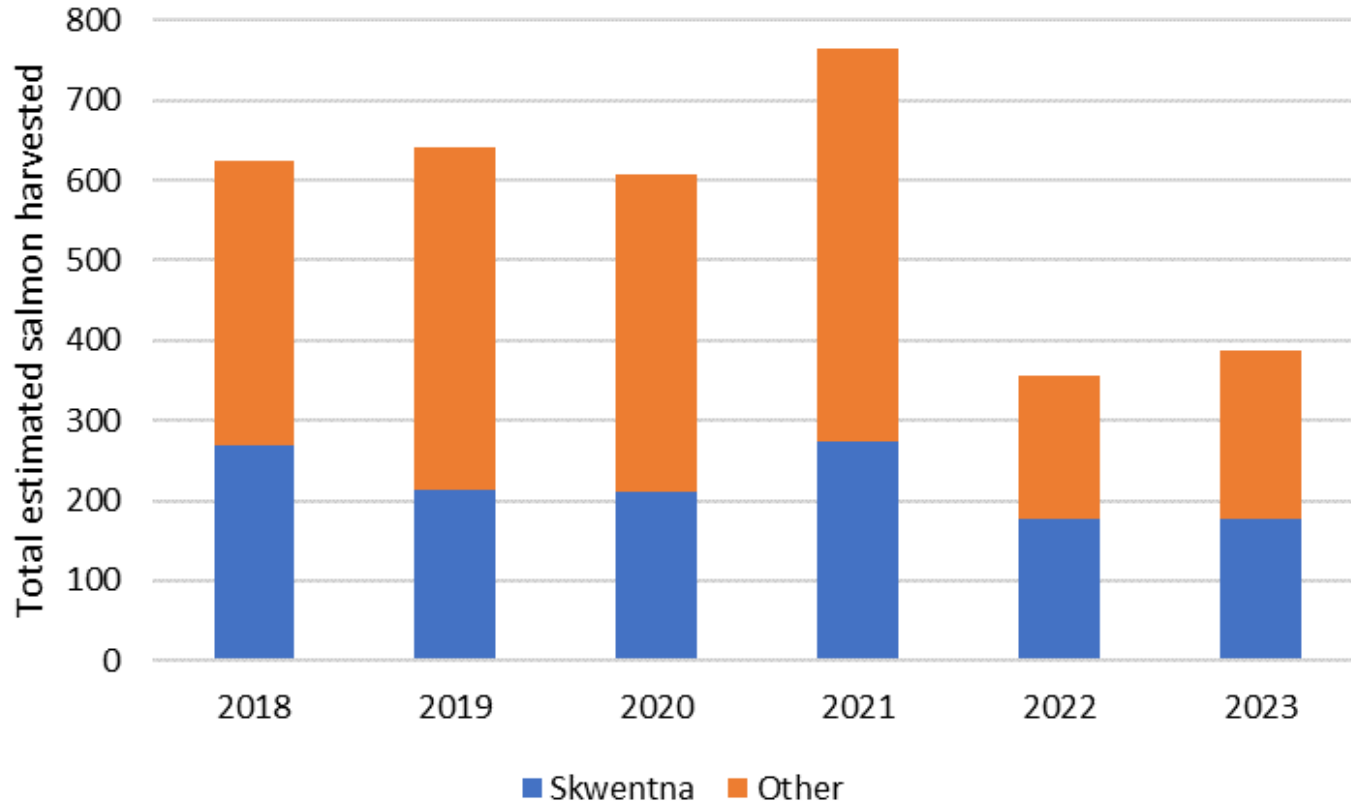
Average Harvest Composition (2018 – 2023)



King Salmon Harvest 2018 – 2023



Yentna Subsistence Harvest by Place of Residence



Other communities = Sterling, Anchorage, Eagle River, Chugiak, Palmer, Wasilla, and Willow



Smelt in those portions of the Cook Inlet Area outside the boundaries of the NSA

Bottomfish, halibut, and herring in those portions of the Cook Inlet Area that are outside the boundaries of the nonsubsistence area

ANS: 100 - 225 lingcod

ANS: 750 - 1,350 rockfish



Photo credit: ADF&G

Contact Us:

Jackie Keating

Southcentral Subsistence Resource Specialist

jacqueline.keating@alaska.gov

(907) 267-2368

Lauren Sill

Southern Region Program Manager

lauren.sill@alaska.gov

(907) 465-3617

Community Subsistence Harvest Information System

<http://www.adfg.alaska.gov/sb/CSIS/>

Division Technical Paper Series

<http://www.adfg.alaska.gov/sf/publications>

Photos:

A multi-generational family processes king salmon, Tyonek Fishing at a fishwheel, Yentna River

