

# The Commercial Salmon Fisheries of the Kodiak Management Area



**James Jackson**

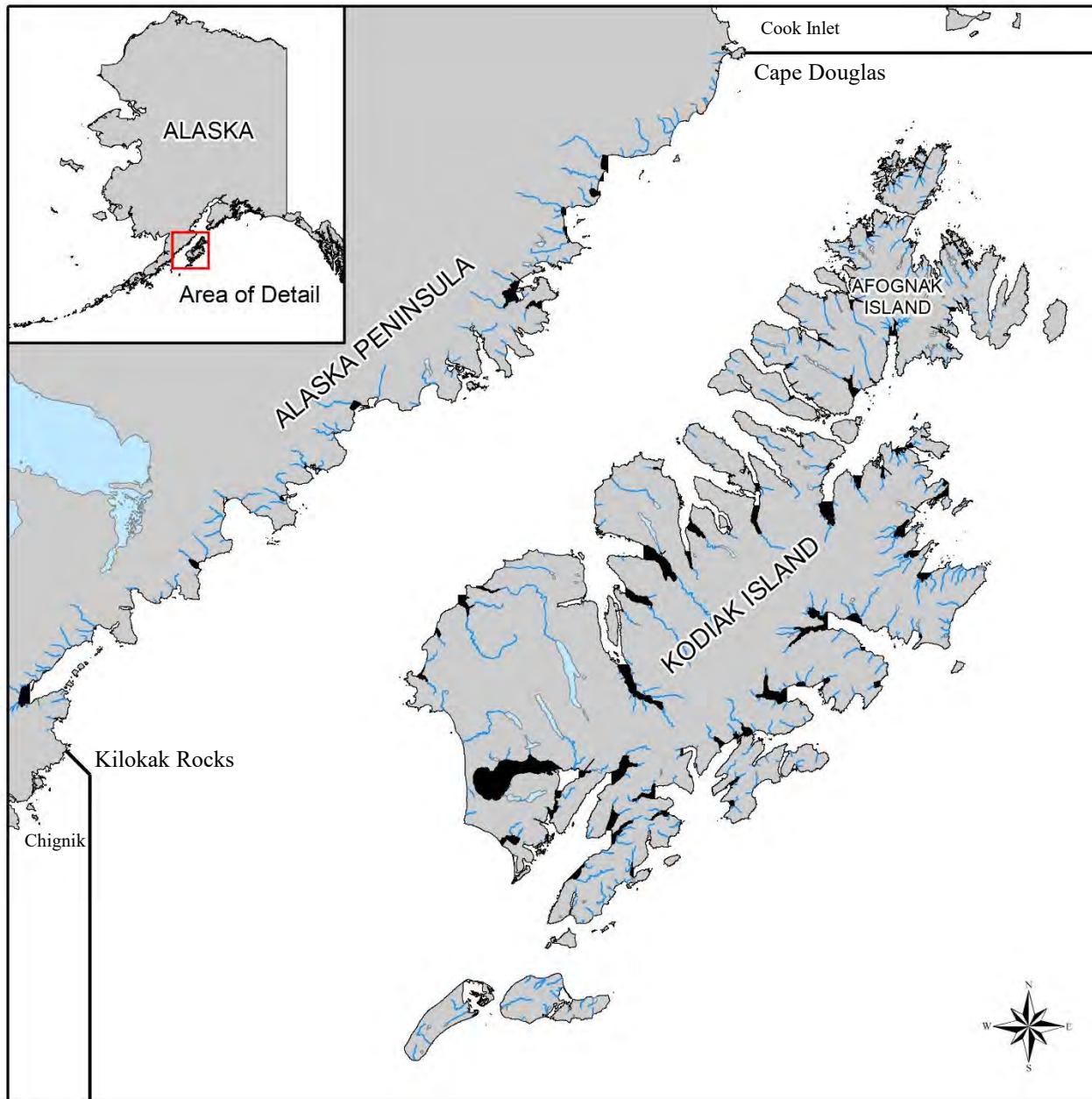
**A Report to the Alaska Board  
of Fisheries  
January 2024**

**Oral Report: RC 3; Tab 4  
Staff Comments: RC 2**

# Topics to be Covered:

1. Description of Kodiak management area
2. A geographic description of the 9 major management plans
3. Average run timing by species
4. Gear types and permits fished
5. Harvest and escapement by salmon species
6. Kodiak King salmon stock status

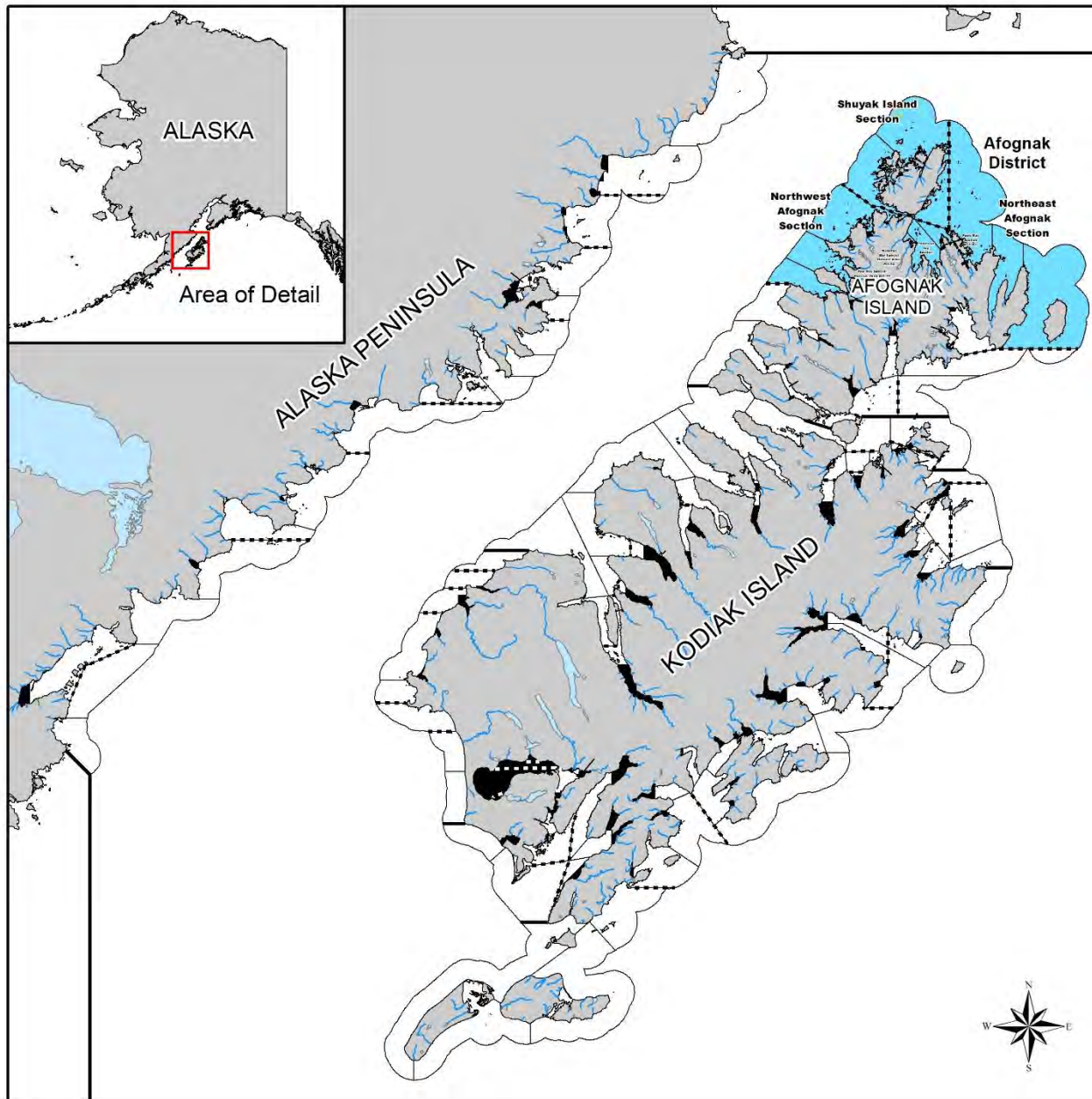
# Kodiak Management Area





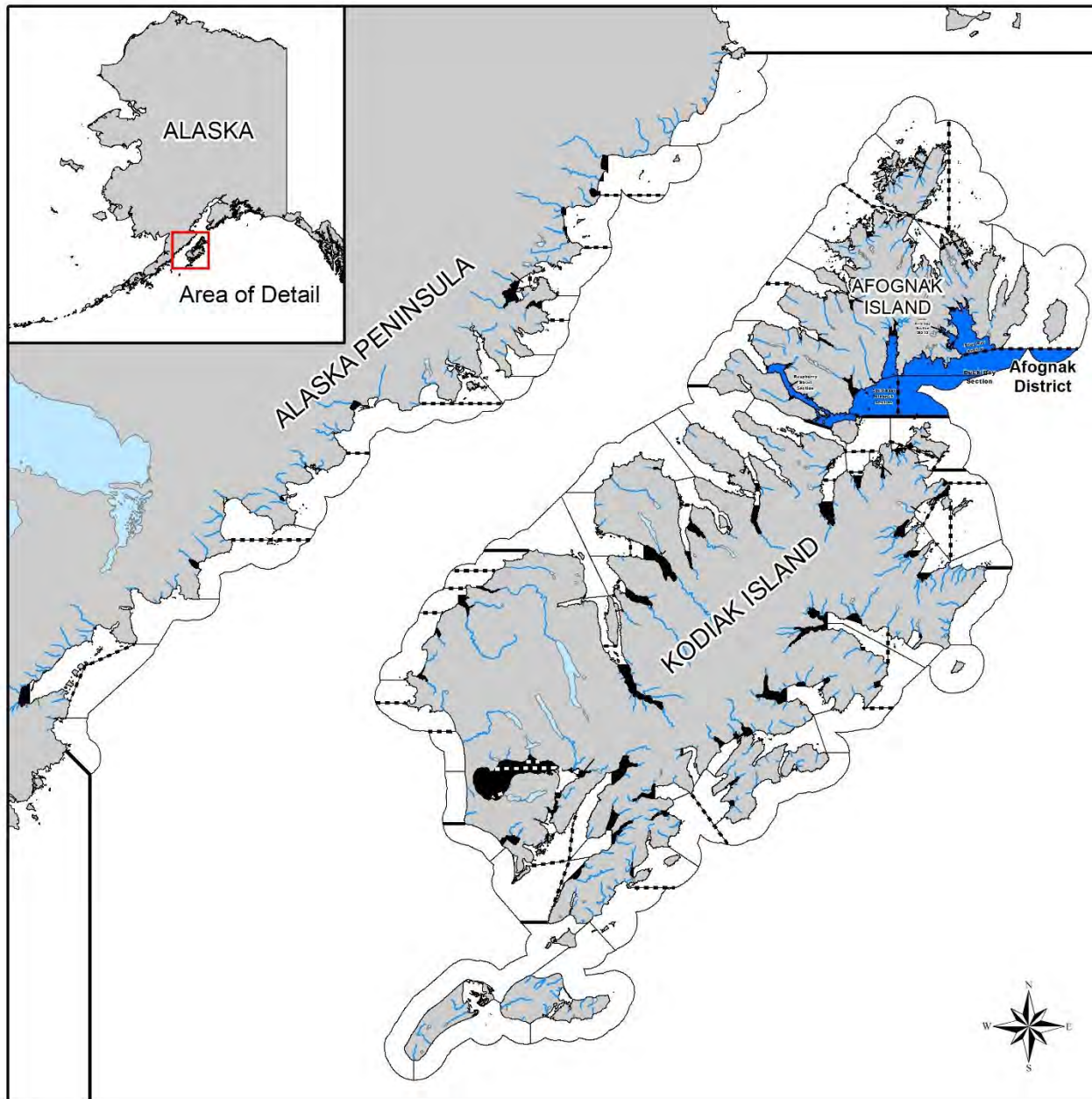


# North Afognak/Shuyak Island Salmon MP

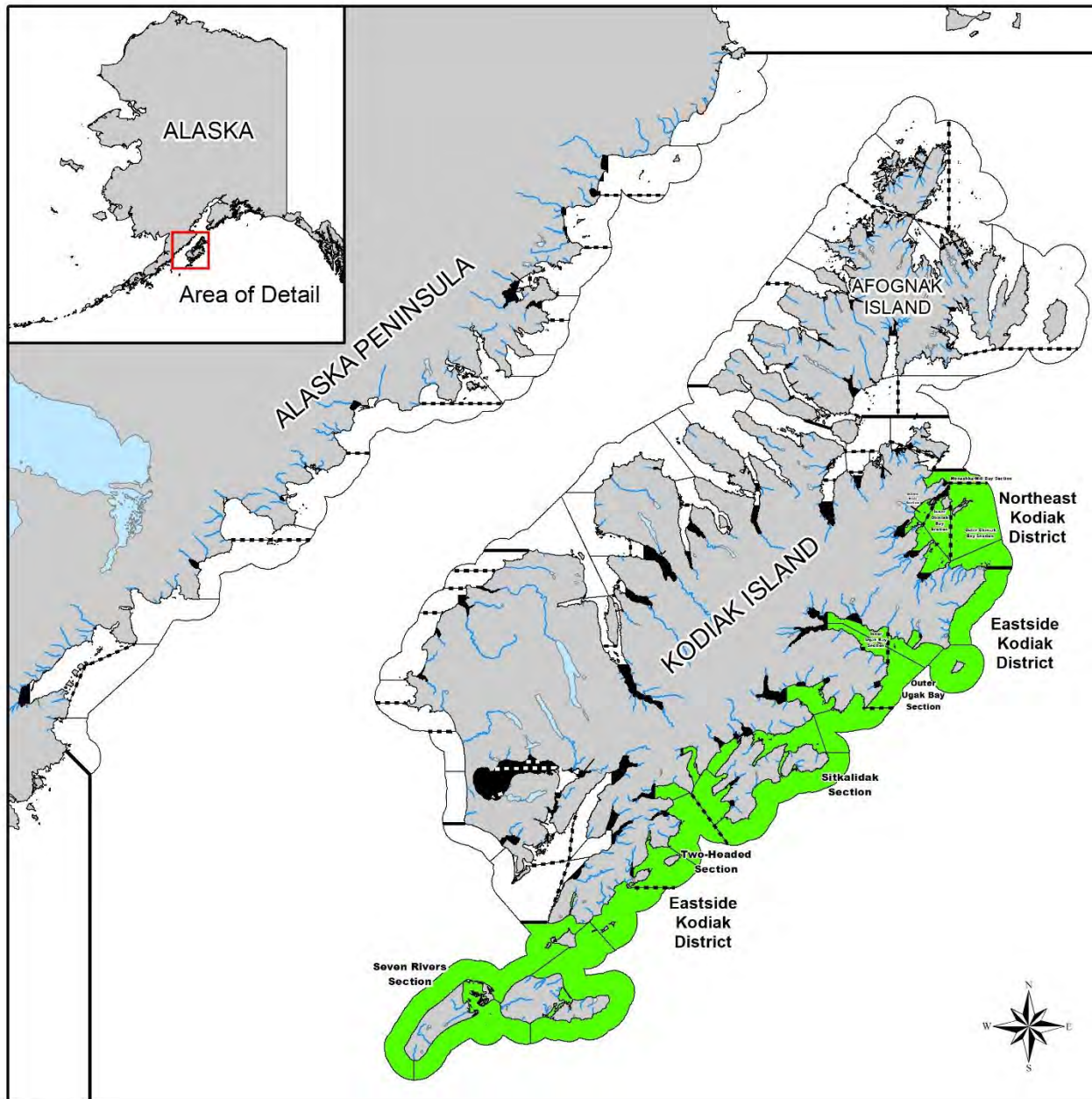




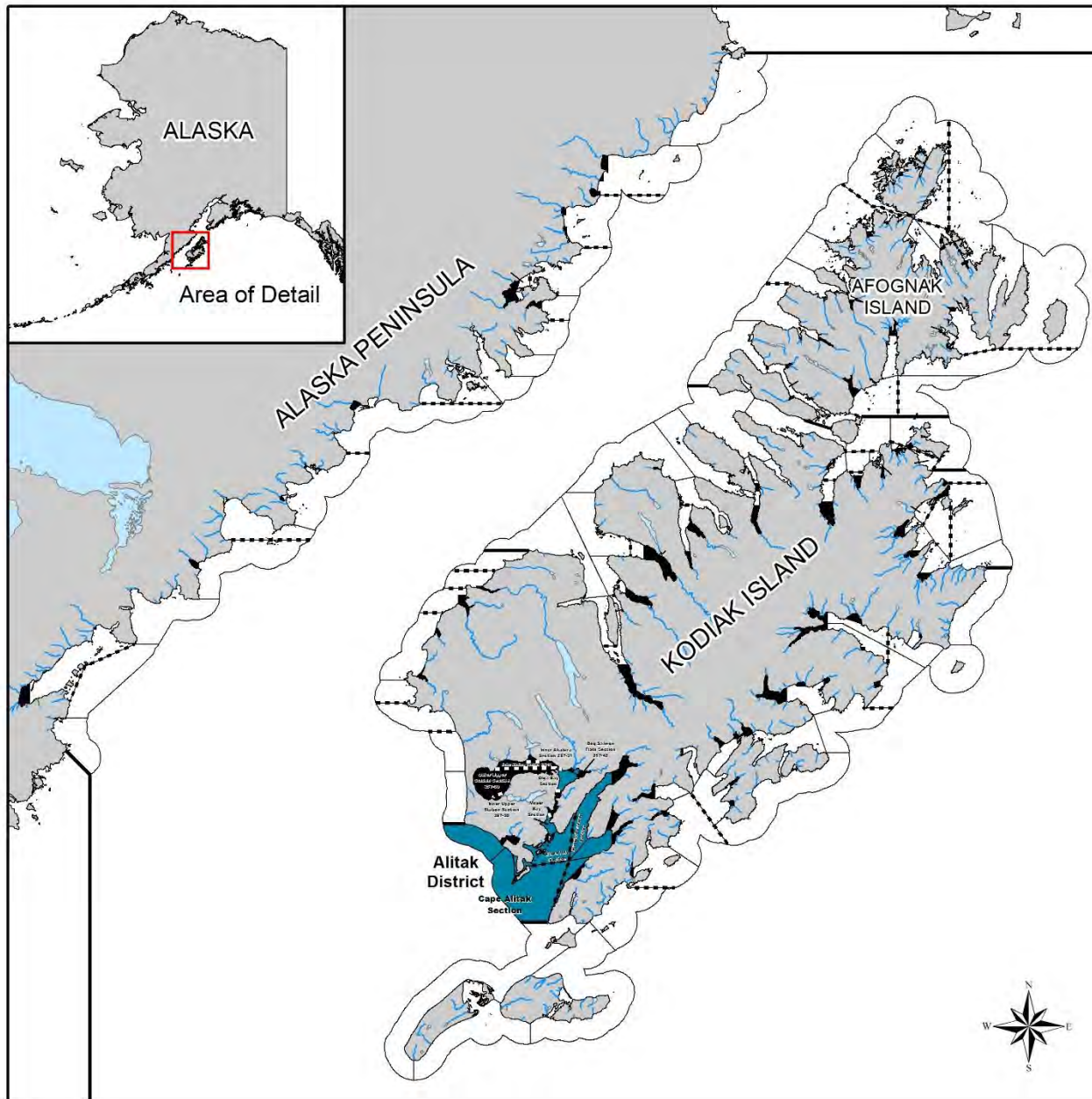
# East Afognak Salmon MP



# Eastside Kodiak Salmon MP

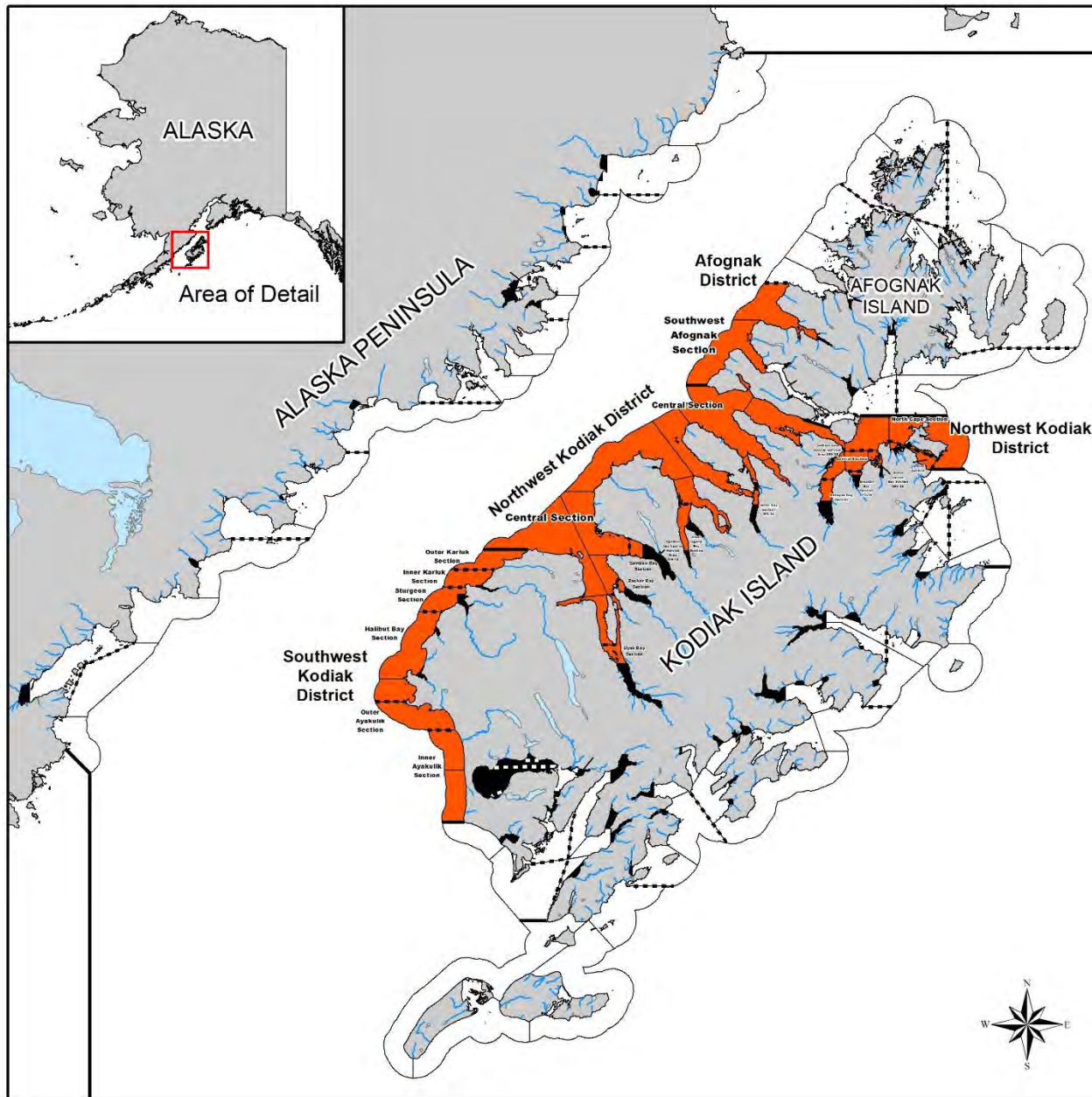


# Alitak District Salmon MP

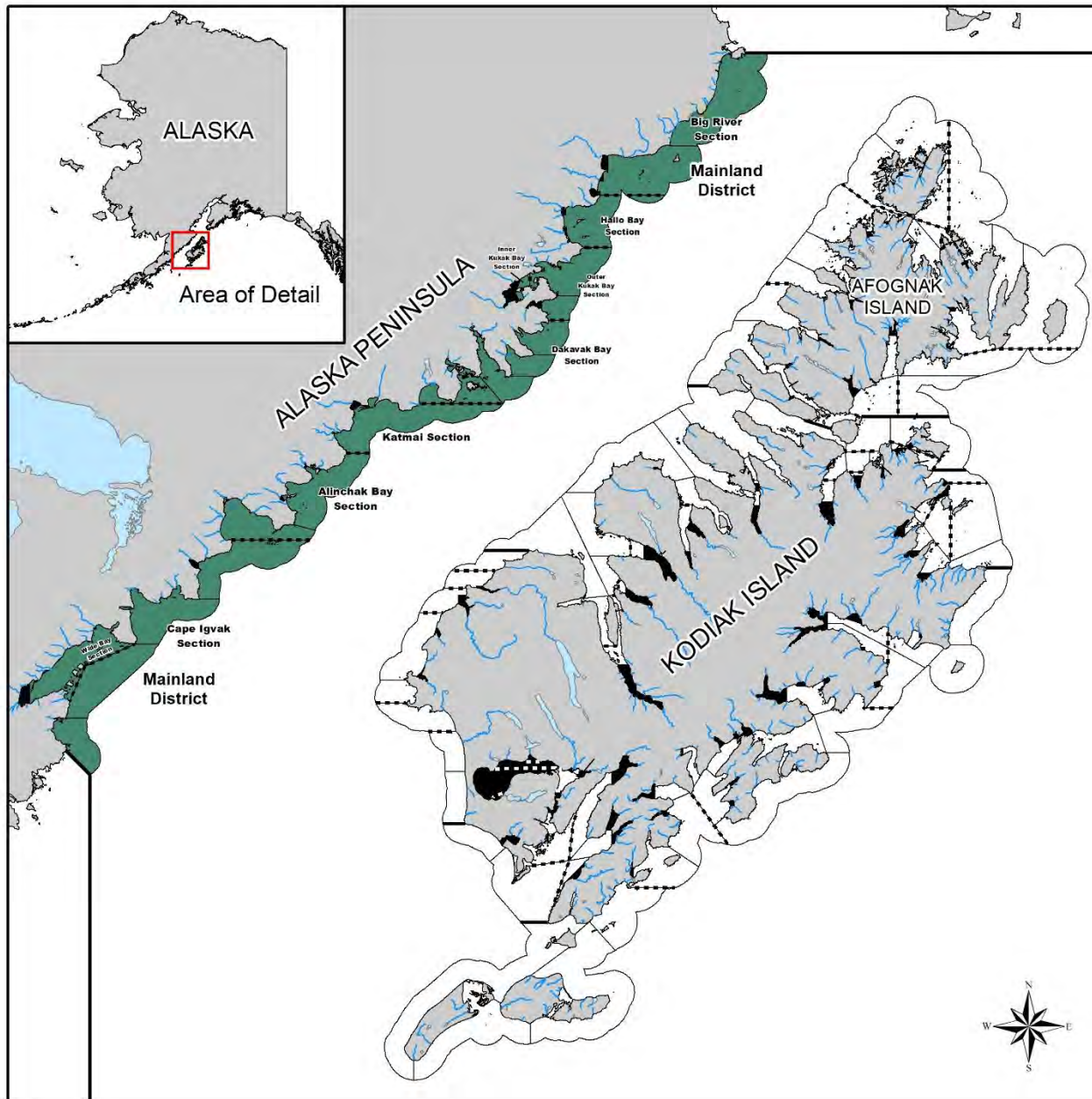




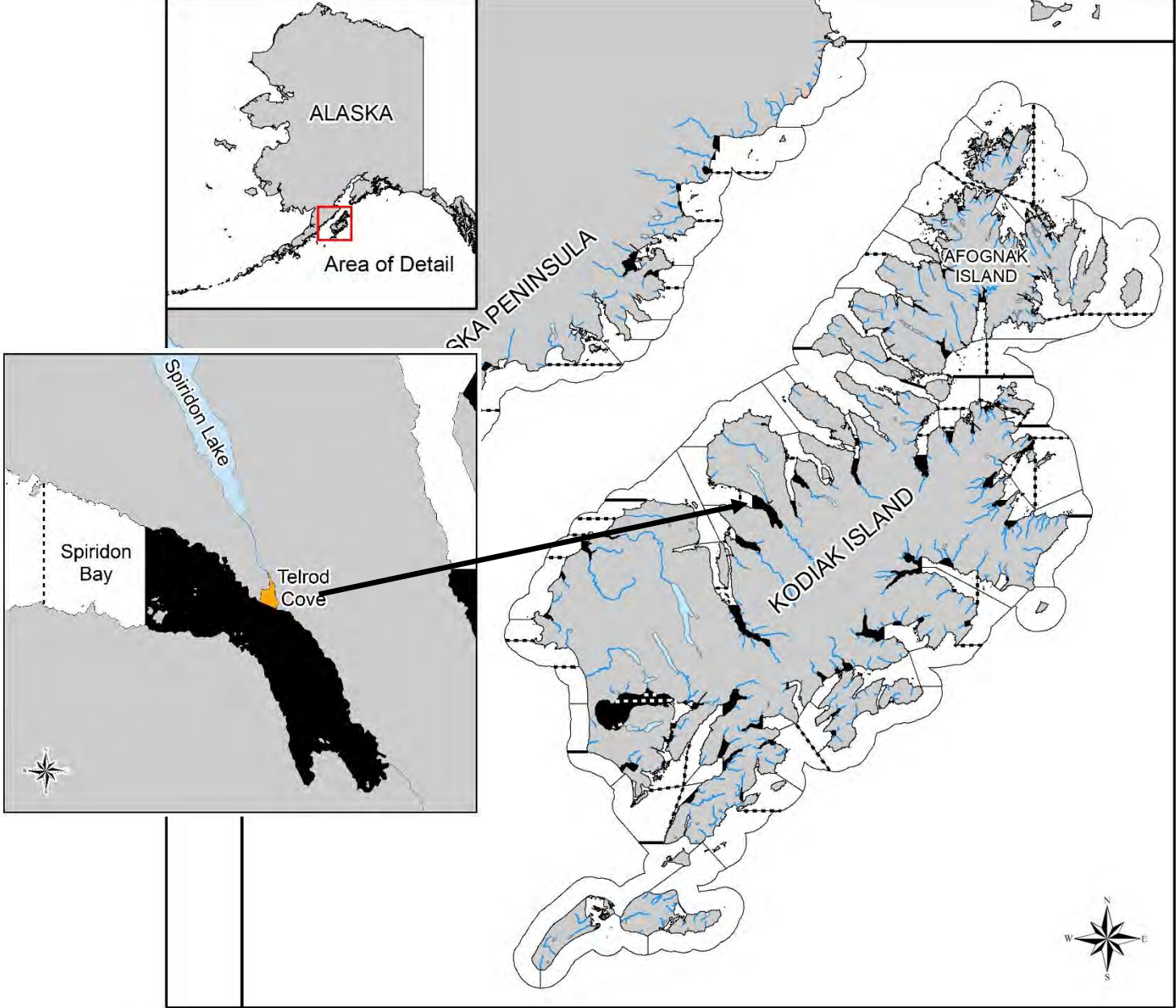
# Westside Kodiak Salmon MP



# Mainland District Salmon MP

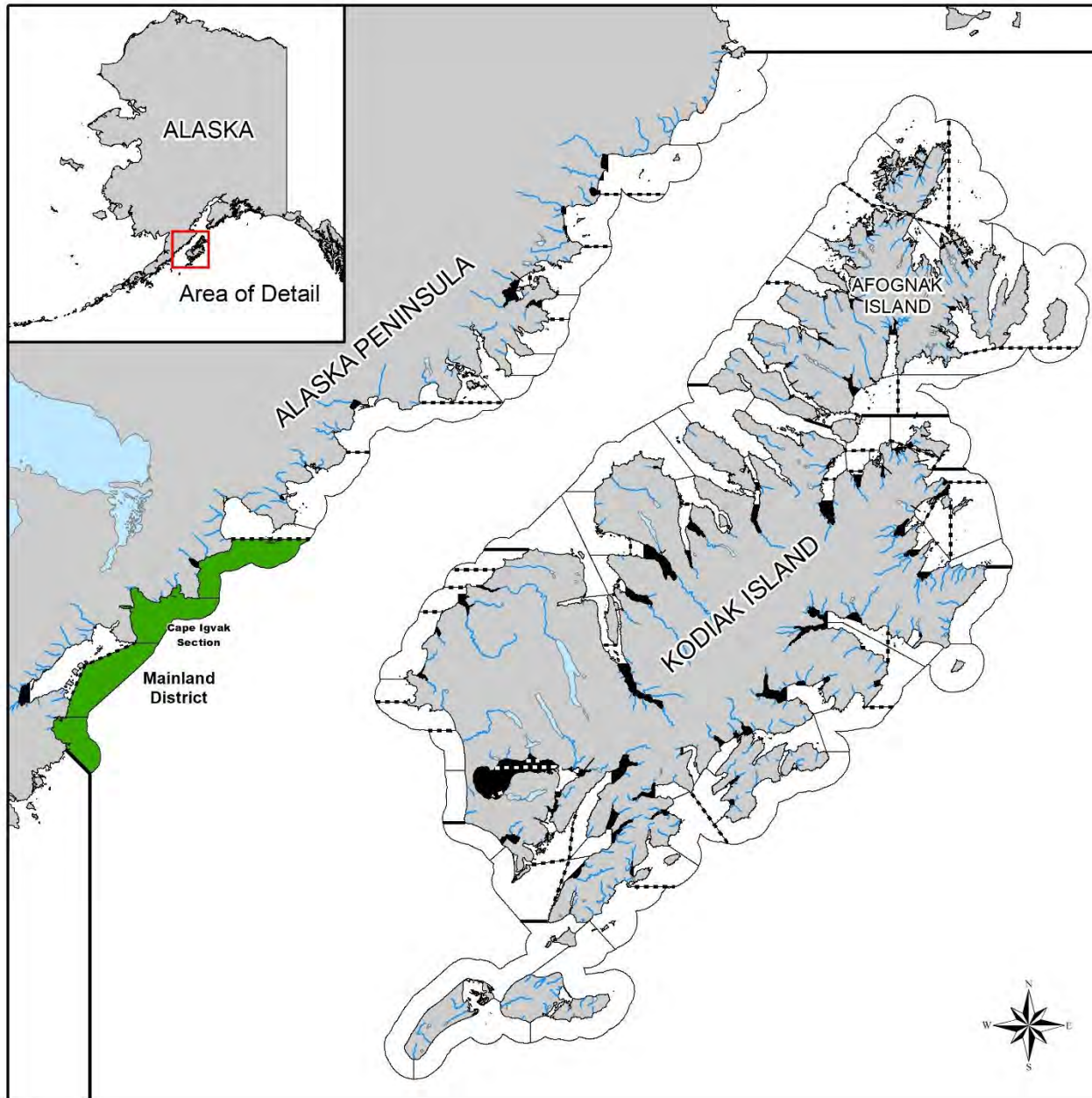


# Spiridon Bay Sockeye Salmon MP (Telrod Cove)





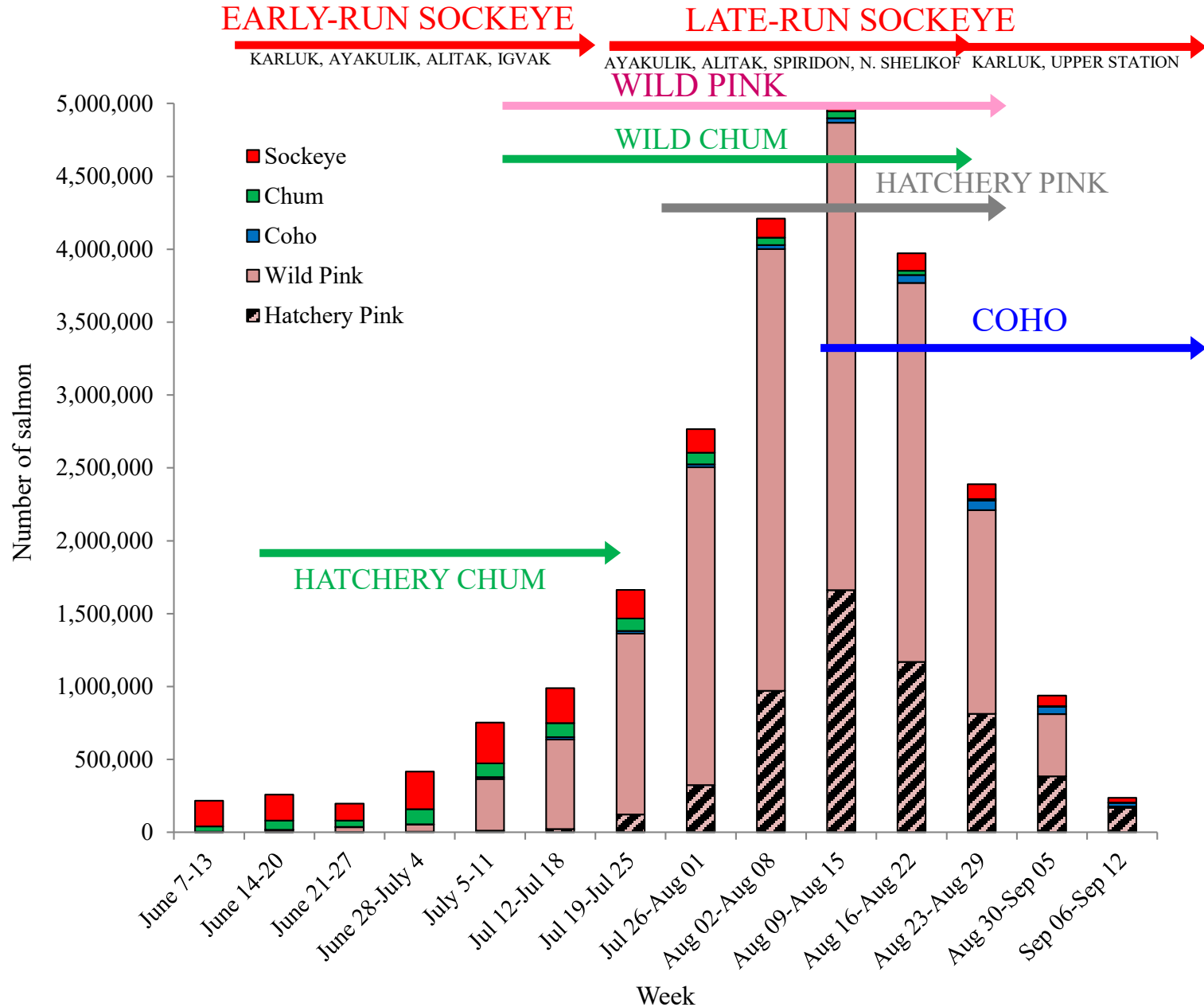
# Cape Igvak Salmon MP



# North Shelikof Salmon MP

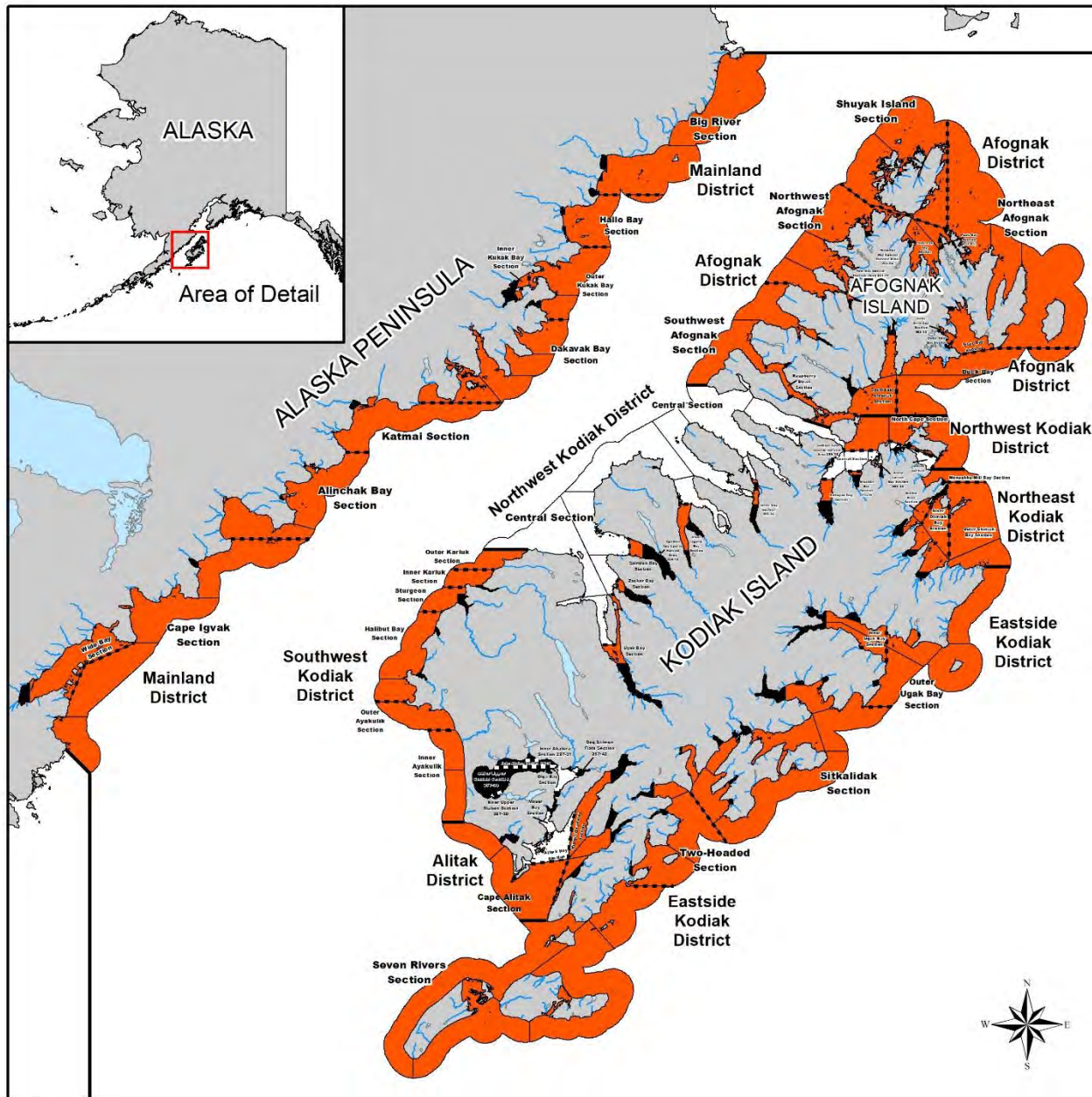


# Average Weekly Salmon Harvest for the KMA, 2004-2023

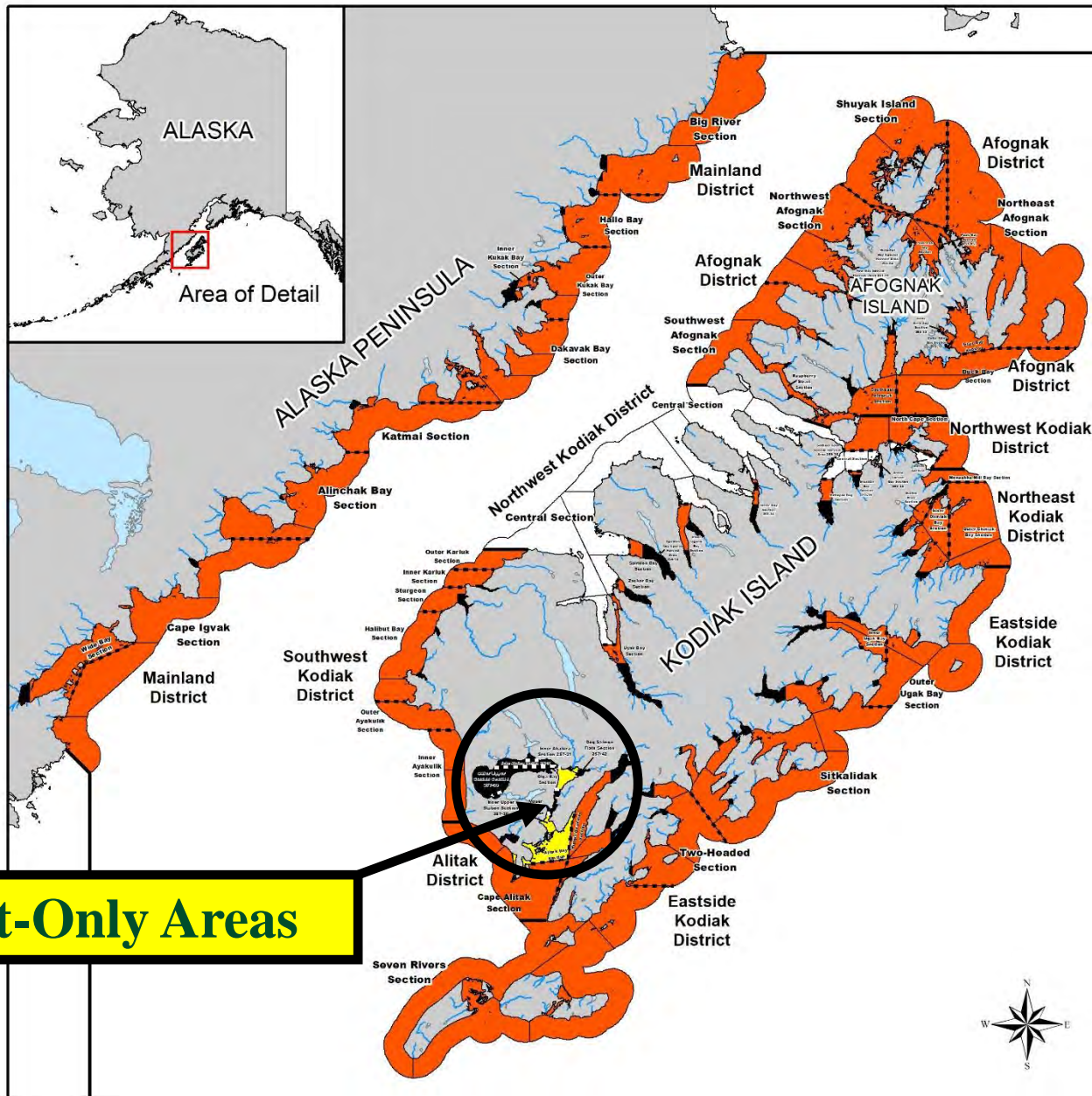




# Seine Only Areas



# Set Gillnet Only Areas



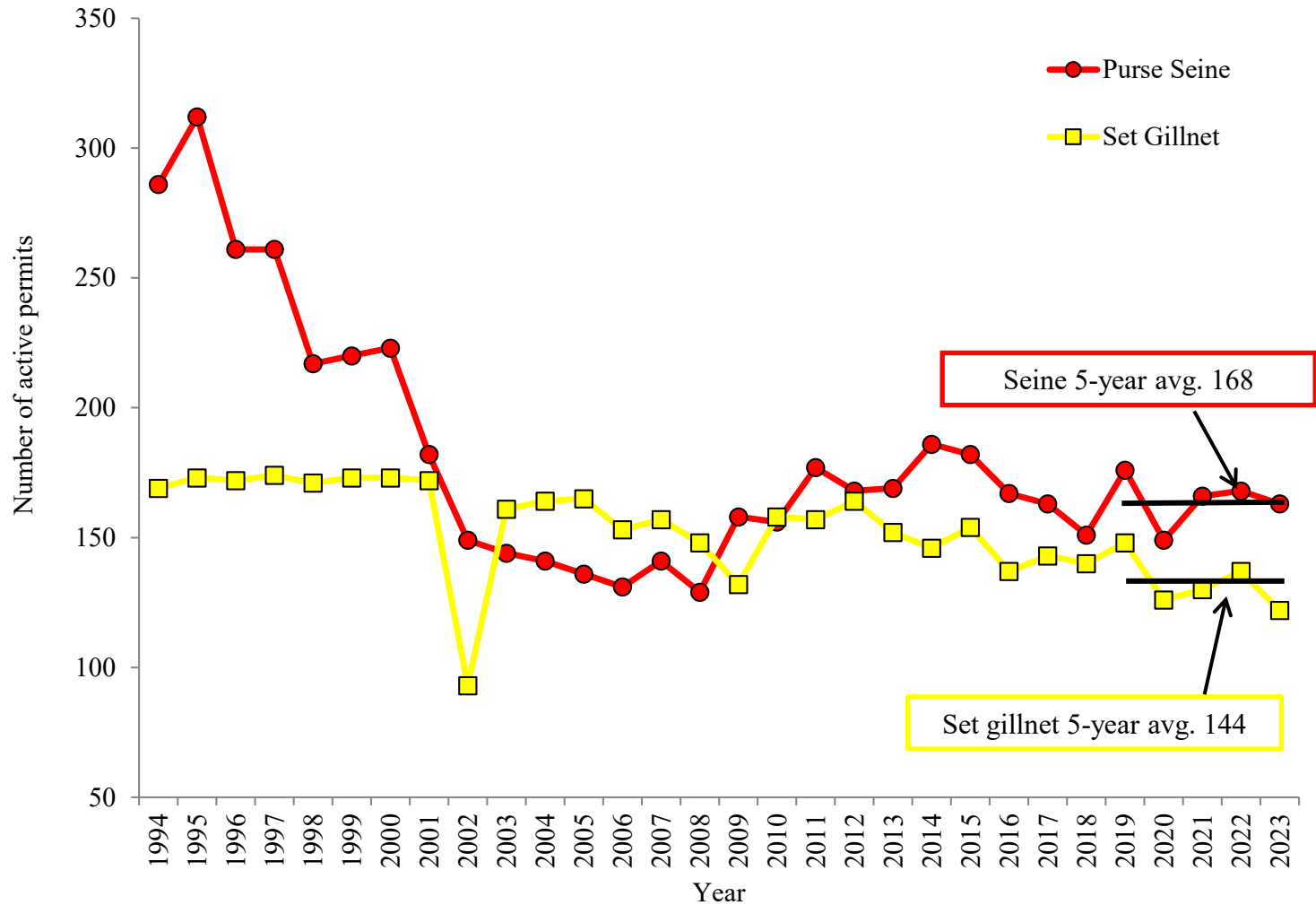
**Set Gillnet-Only Areas**



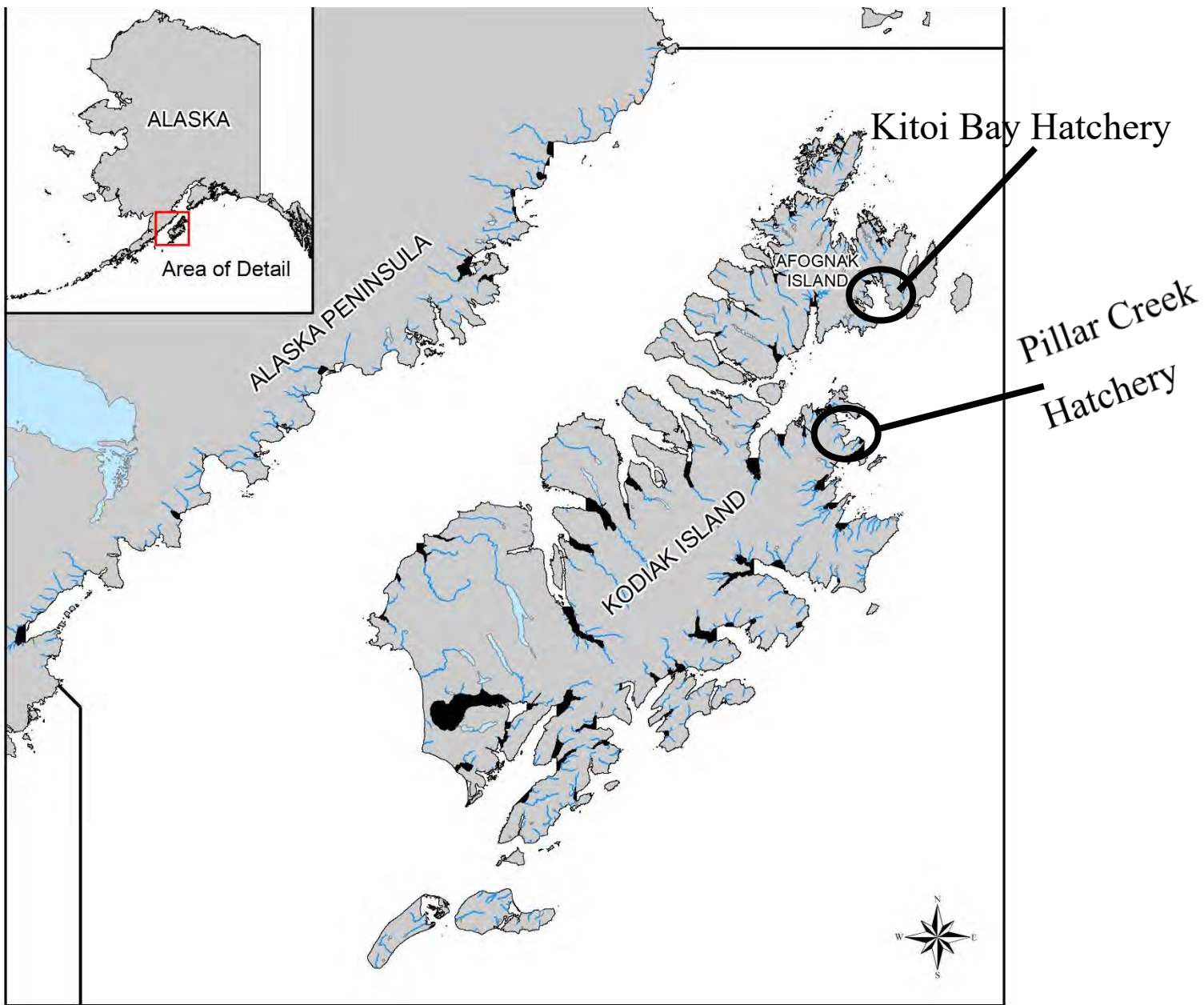




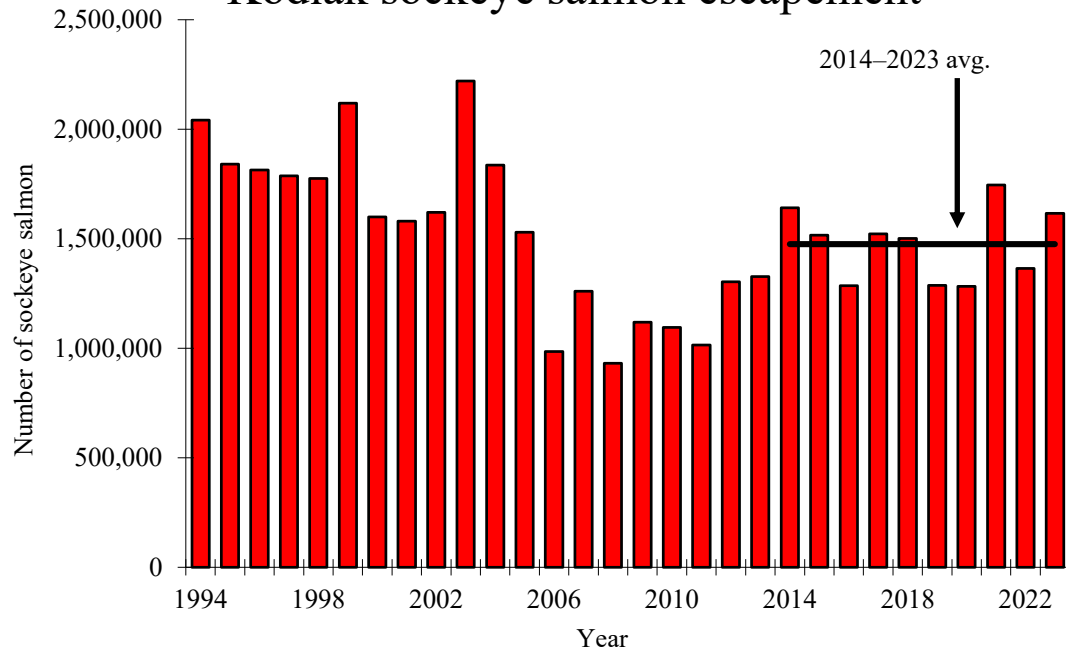
# Number of Kodiak Area Commercial Salmon Permits Fished



# Kodiak Hatcheries



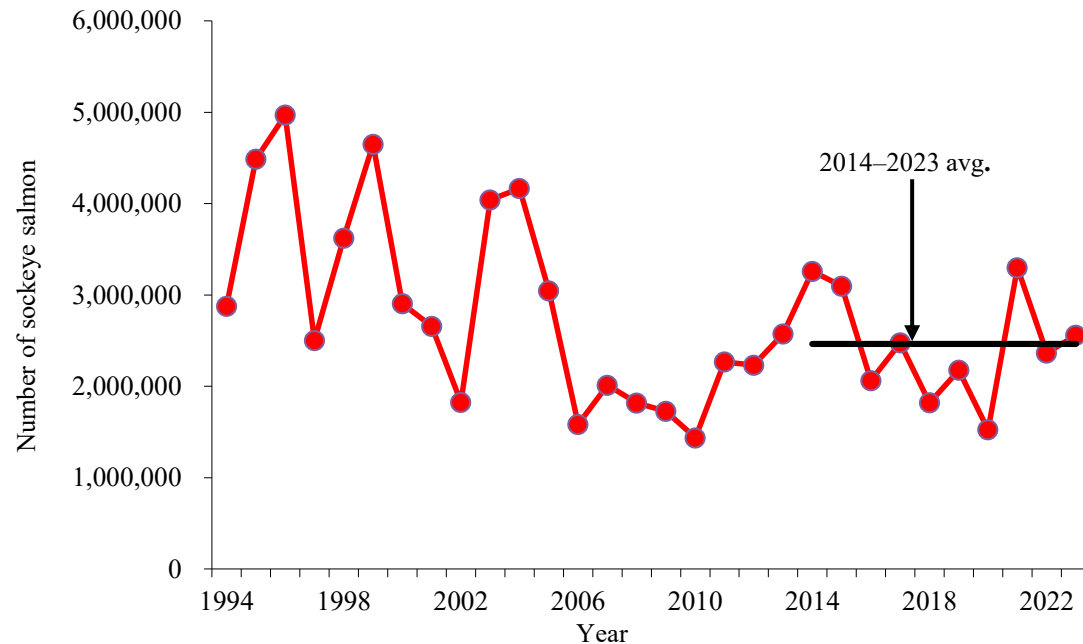
## Kodiak sockeye salmon escapement



## Kodiak sockeye salmon escapement

- 2014–2023 avg. escapement of ~ 1,500,000 fish
- 2014–2023 avg. ~ 90% of KMA escapement from Karluk, Ayakulik, Upper Station, and Frazer

## Kodiak sockeye salmon harvest

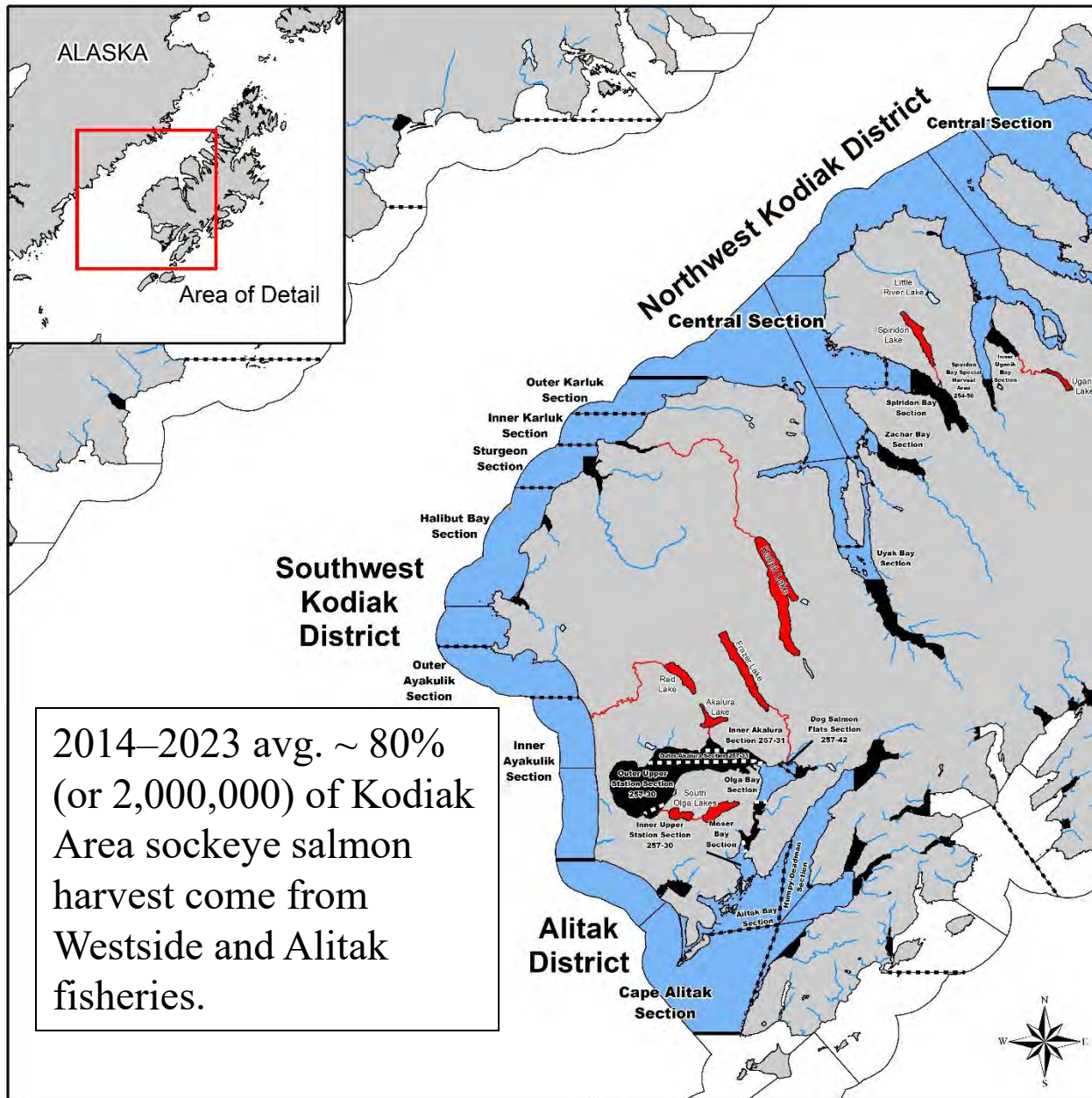


## Kodiak sockeye salmon harvest

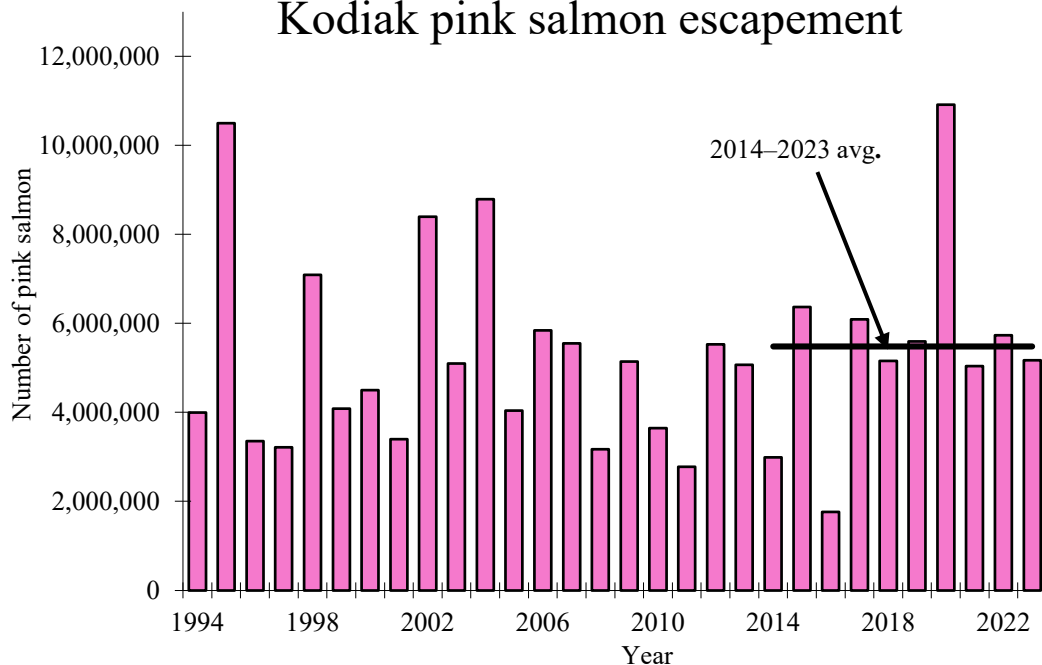
- 2014–2023 avg. harvest of ~ 2,500,000 fish
- 2014–2023 avg. 81% (or ~ 2,000,000) of KMA sockeye salmon harvest from Westside and, Alitak



# Kodiak Area Sockeye Salmon Harvest



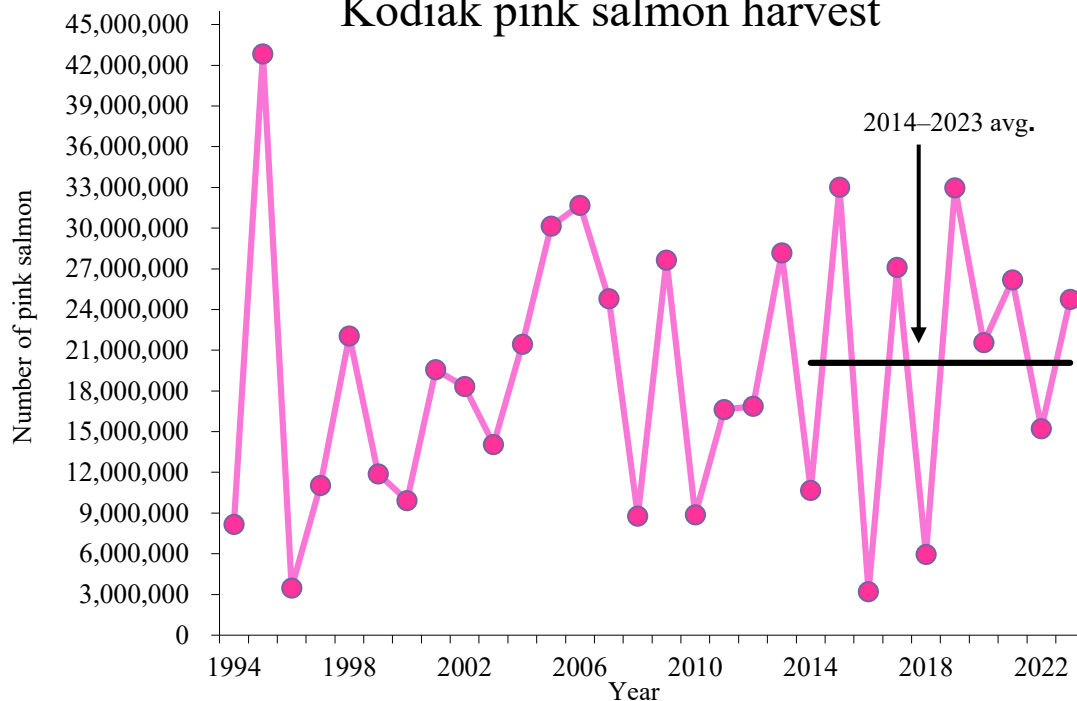
## Kodiak pink salmon escapement



## Kodiak pink salmon escapement

- Pink salmon are found in virtually every KMA stream
- 2014–2023 avg. **index** escapement of ~ 5,500,000 fish
- Last 7 years KMA pink salmon escapement has been relatively high and stable

## Kodiak pink salmon harvest

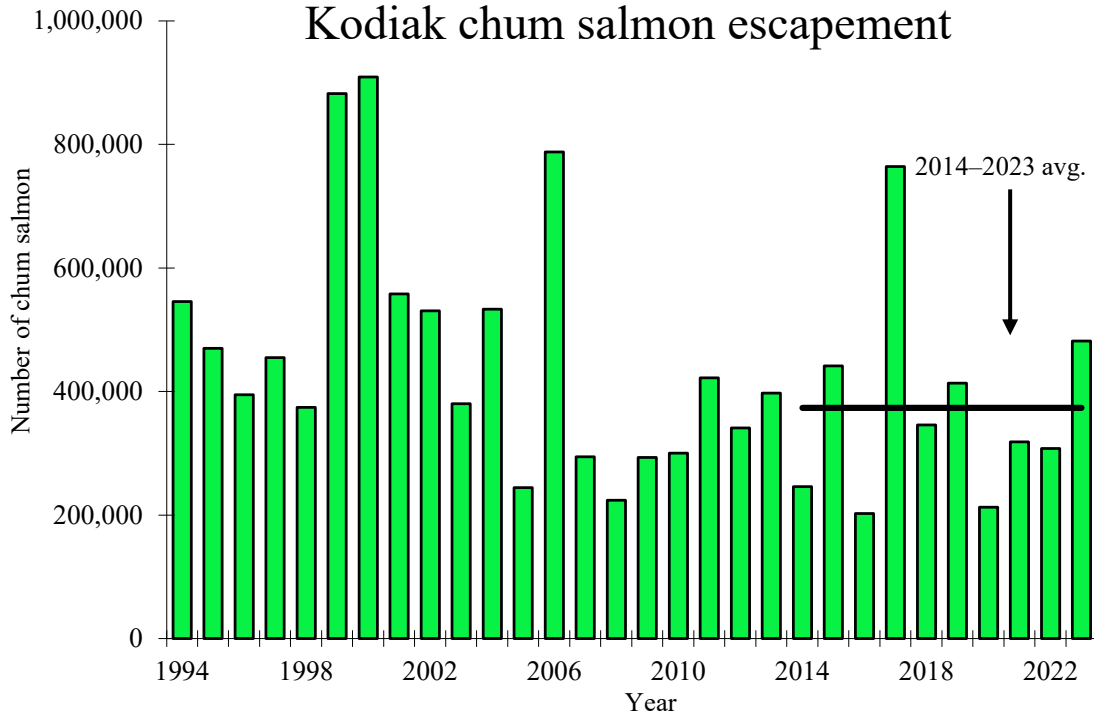


## Kodiak pink salmon harvest

- Pink salmon harvest has been stable for the past 5 years
- 2014–2023 avg. harvest of ~ 20,000,000 fish
- 2014–2023 avg. ~ 70% of KMA pink salmon harvested in areas managed based on wild stocks

## Kodiak chum salmon escapement

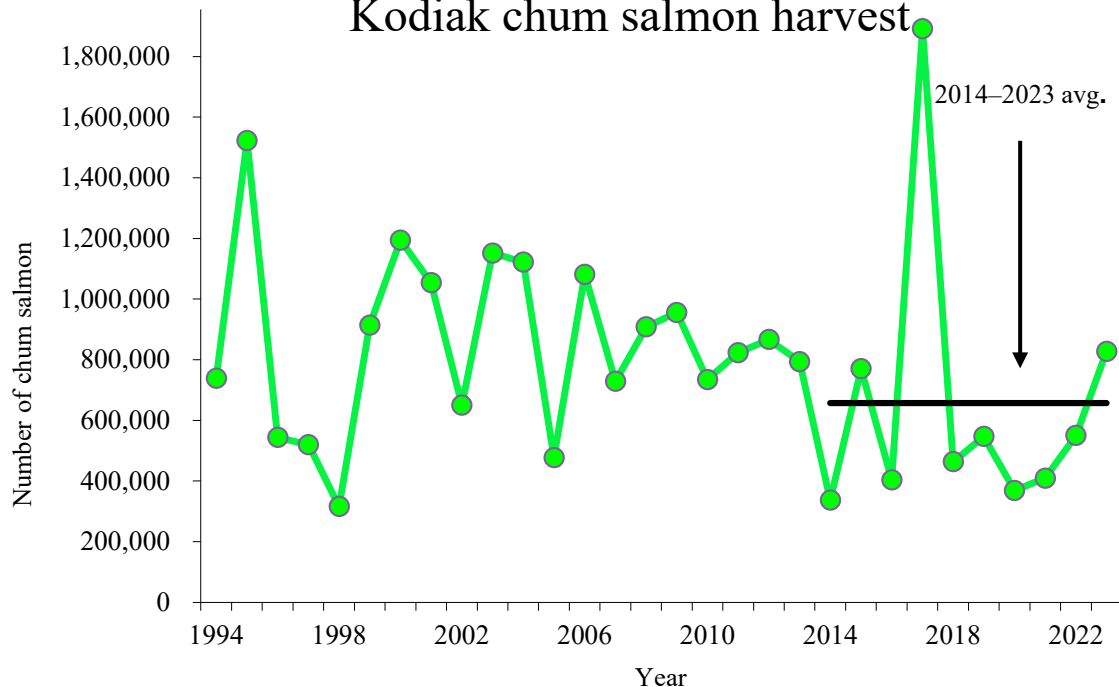
## Kodiak chum salmon escapement



- Chum salmon are found in approximately 150 KMA streams
- 2014-2023 avg. **index** escapement of ~ 373,000 fish
- Part of recent low escapement numbers reflect fewer aerial surveys

## Kodiak chum salmon harvest

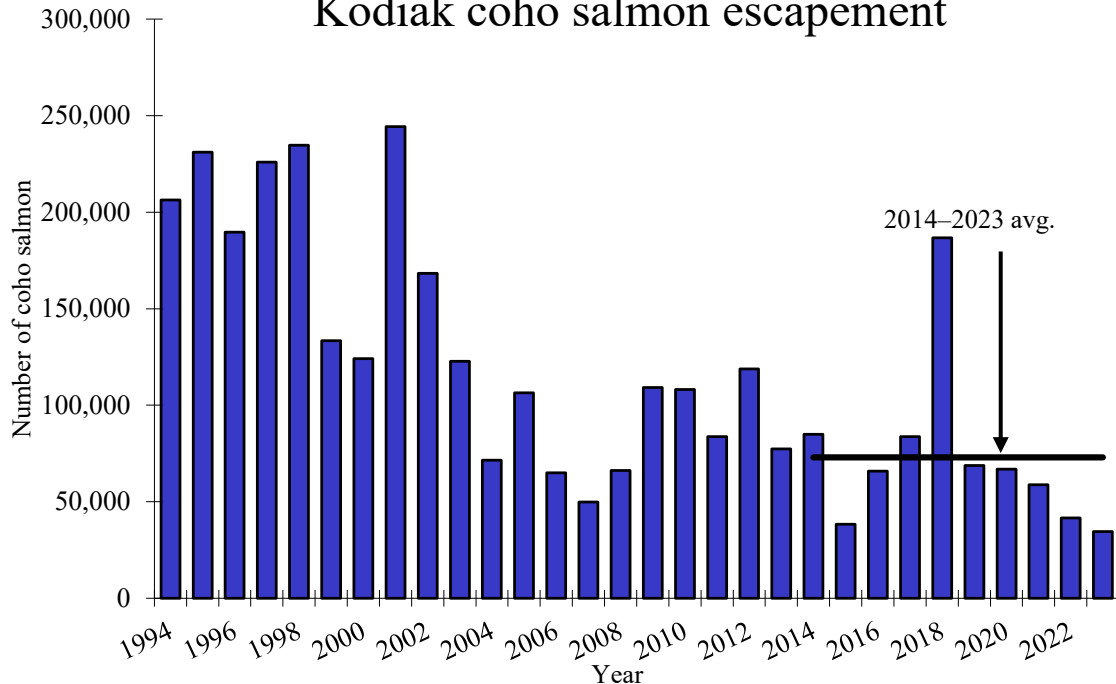
## Kodiak chum salmon harvest



- 2014-2023 avg. harvest of ~ 655,000 fish
- 2014-2023 avg. 85% of KMA chum salmon harvested in non hatchery areas
- Recent low harvest partly due to weak pink and chum runs and restrictive fishing time on the mainland



## Kodiak coho salmon escapement



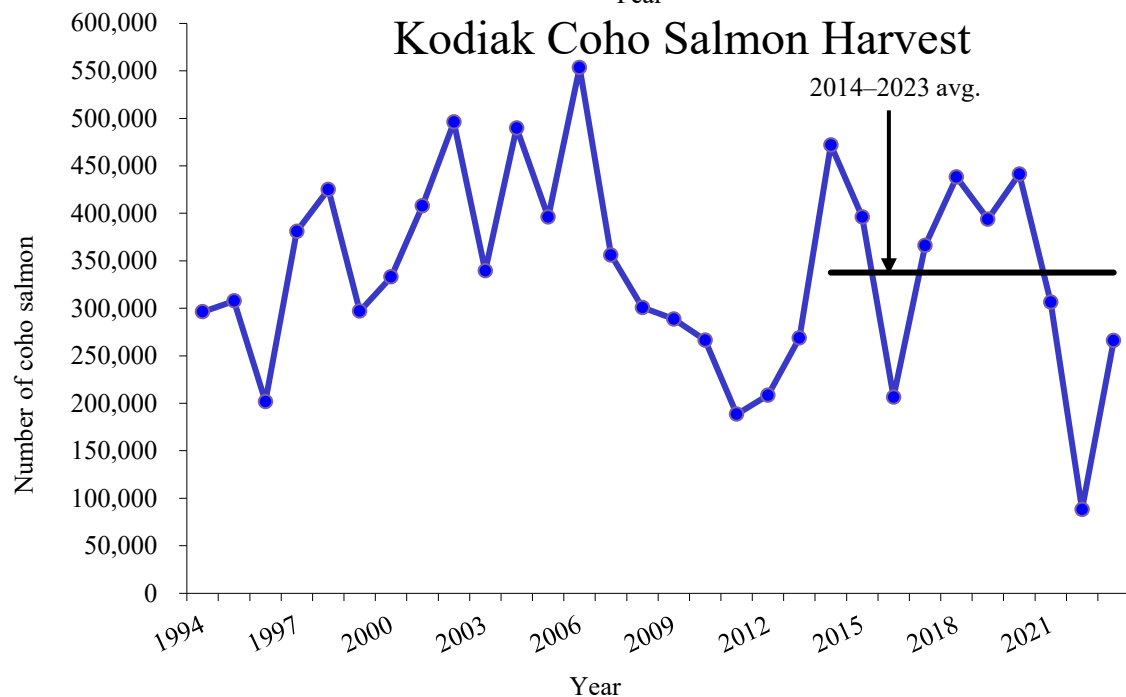
## Kodiak coho salmon escapement

- Coho salmon are found in approximately 150 KMA streams
- 2014–2023 avg. ~ 73,000 fish
- Most of recent low escapement numbers reflect less weirs, less weir time and less aerial surveys
- Kodiak has large coho stocks, but the department has little money or resources to monitor

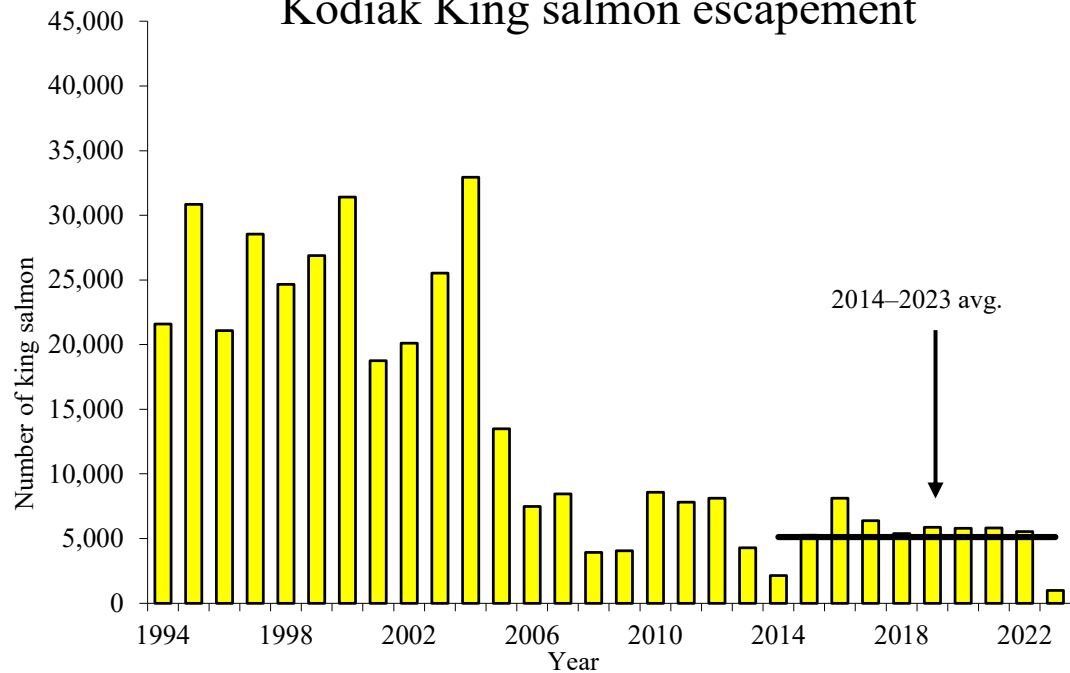
## Kodiak coho salmon harvest

- 2014–2023 avg. ~ 340,000 fish
- 2014–2023 avg. 80% of KMA coho salmon harvested in non-hatchery areas

## Kodiak Coho Salmon Harvest



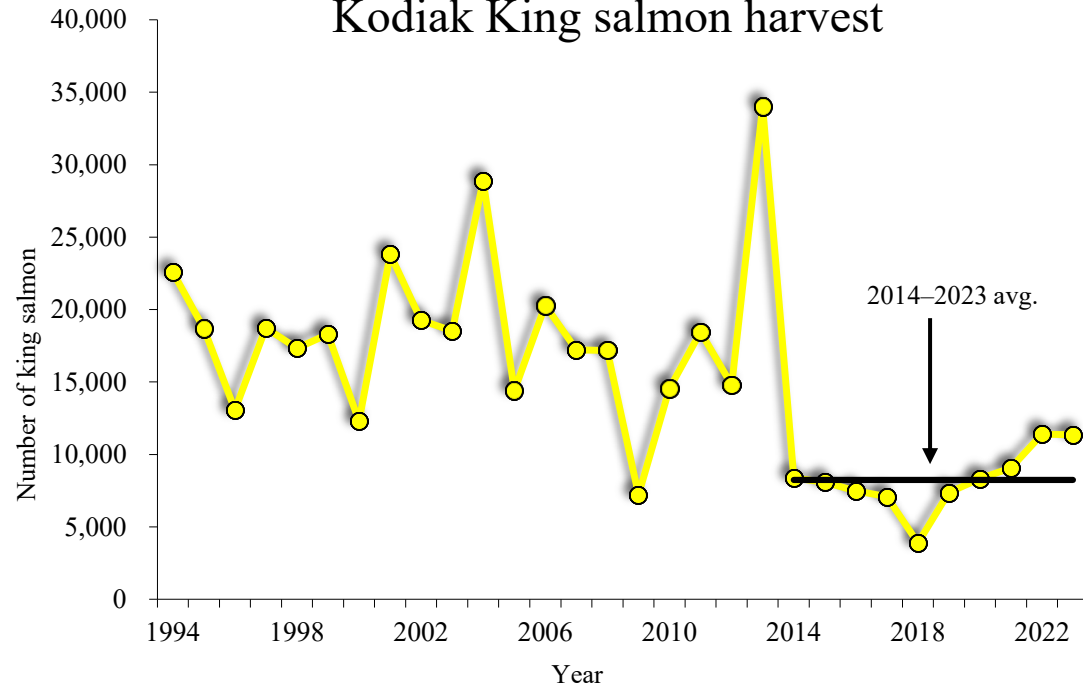
## Kodiak King salmon escapement



## Kodiak King salmon escapement

- KMA has two systems, Karluk and Ayakulik Rivers
- 2014–2023 avg. ~ 5,100 fish
- Karluk King salmon listed as Stock of Management Concern in **2011**; Ayakulik King Salmon listed as stock of Management Concern in **2020**

## Kodiak King salmon harvest

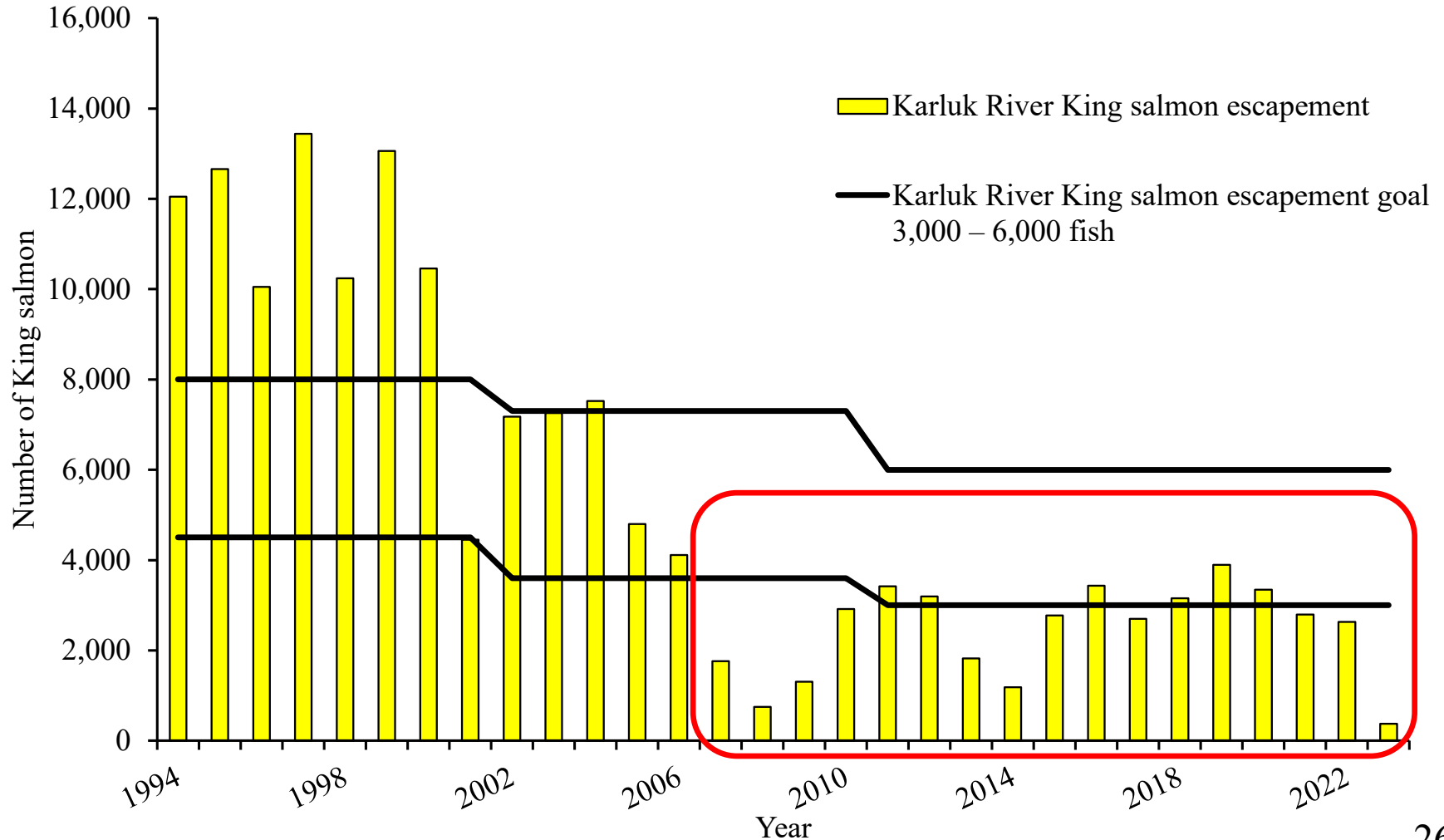


## Kodiak King salmon harvest

- 2014–2023 avg. ~ 8,200 fish
- Significant decline in harvest the past 10 seasons
- Nonretention on Westside of Kodiak 2011-2013
- June area wide nonretention 2014–2023

# Karluk King Salmon Escapement

- BEG (3,000 – 6,000) was not achieved for 11 of the past 17 years
- 2023 was the lowest King salmon escapement on record



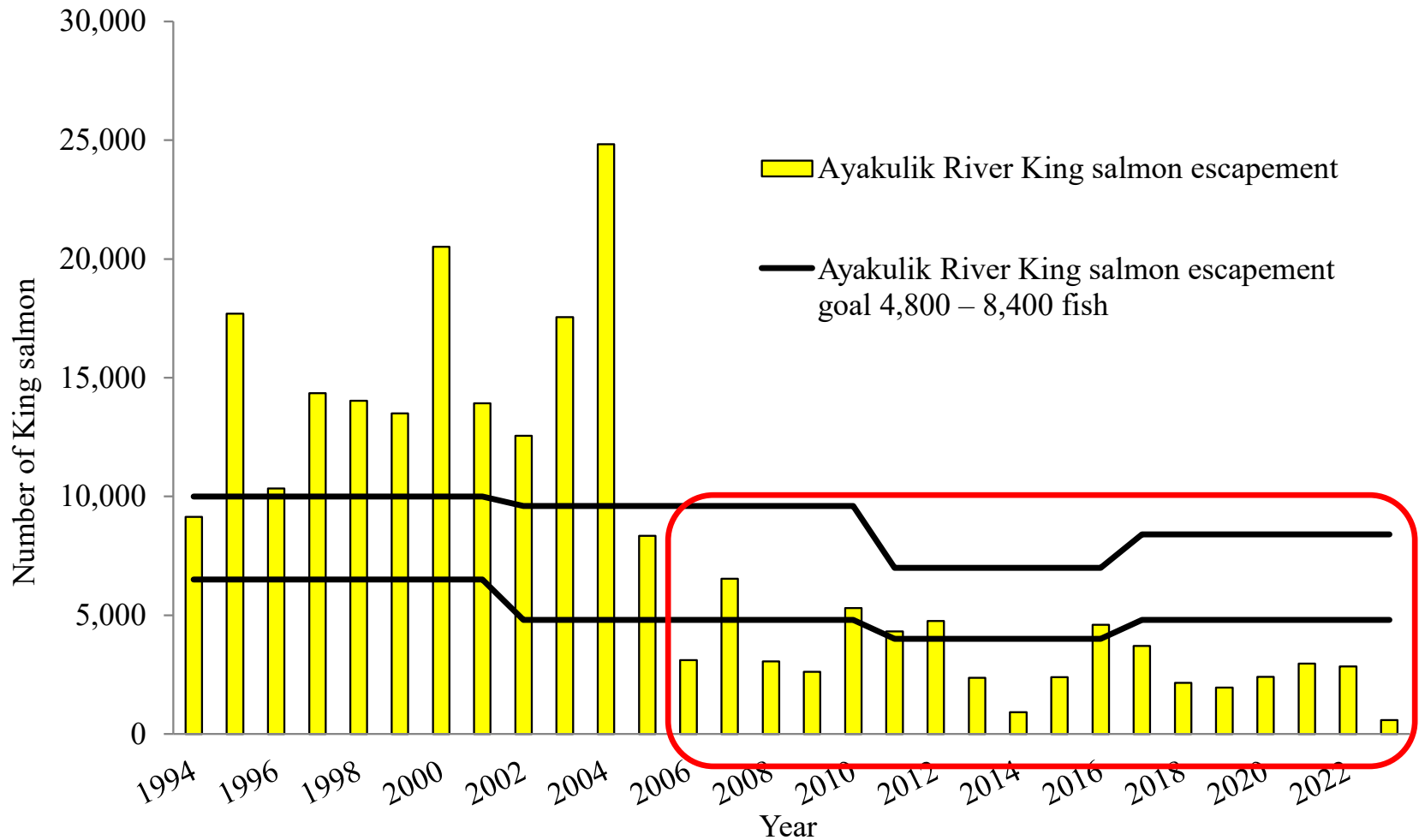


# Karluk King Salmon Commercial Salmon Conservation Measures:

- 2005: Board adopts regulation to mandate nonretention of King salmon 28 inches or greater in length for seine gear in the Inner and Outer Karluk Sections
- 2011: Karluk King Salmon listed as stock of concern, board adopts regulation to mandate nonretention of king salmon 28 inches or greater in length for seine gear within portions of Northwest Kodiak District and all Southwest Kodiak District through July 30
- 2014: Board adopts regulation mandating KMA area wide nonretention of king salmon 28 inches or greater in length for seine gear prior to July 5

# Ayakulik King Salmon Escapement

- BEG (4,800 – 8,4000) was not achieved for 13 of the past 18 years
- 2023 was the lowest King salmon escapement on record



# Ayakulik king salmon commercial salmon conservation measures:

- 2005: Board adopts regulation to mandate nonretention of King salmon 28 inches or greater in length for seine gear in the Inner and Outer Ayakulik Sections
- 2011: Karluk King Salmon listed as stock of concern, board adopts regulation to mandate nonretention of king salmon 28 inches or greater in length for seine gear within portions of Northwest Kodiak District and all Southwest Kodiak District through July 30
- 2014: Board adopts regulation mandating KMA area wide nonretention of king salmon 28 inches or greater in length for seine gear prior to July 5
- 2020: Ayakulik King Salmon listed as stock of concern, board adopts regulation to limit commercial salmon openings in the Inner Ayakulik Section



# Questions