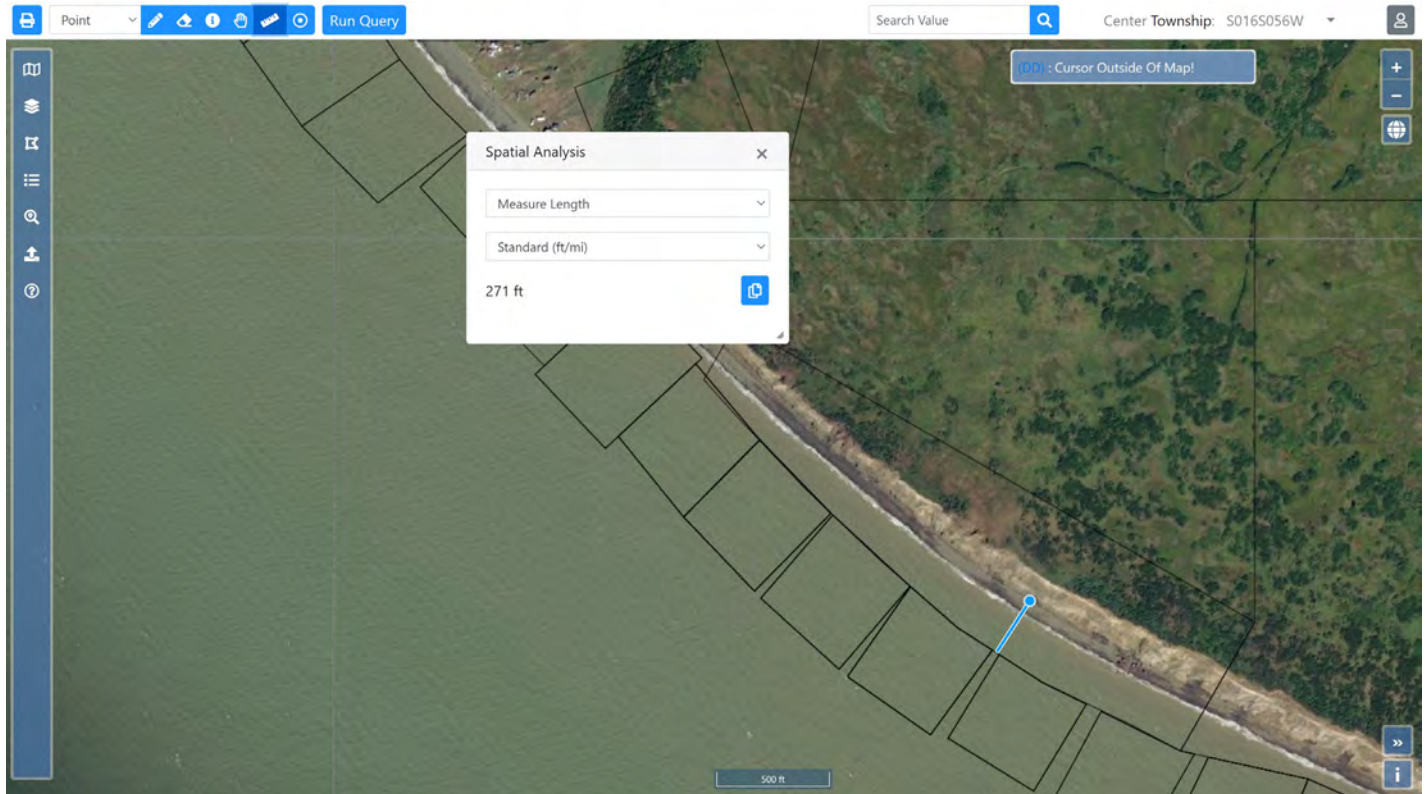


December 1, 2022

RE: Proposal 41

Example erosion on Ekuk Beach

Data source: Alaska Department of Natural Resources, Alaska Mapper Tool



This picture reflects a survey completed in 1983 approximately at the beginning of Ekuk Bluff, south of Ekuk village. The shoreward black line of each black box represents the private upland owner and public access boundary from Alaska Department of Natural Resources for establishment of shore fisheries leases. When the survey was conducted in 1983 this line was at the mean highwater mark of the beach, at the base of the bluff. That same line is now over 200' from mean high water.

Submitted by:

John O'Connor

Christine O'Connor

Nicholas Dowie