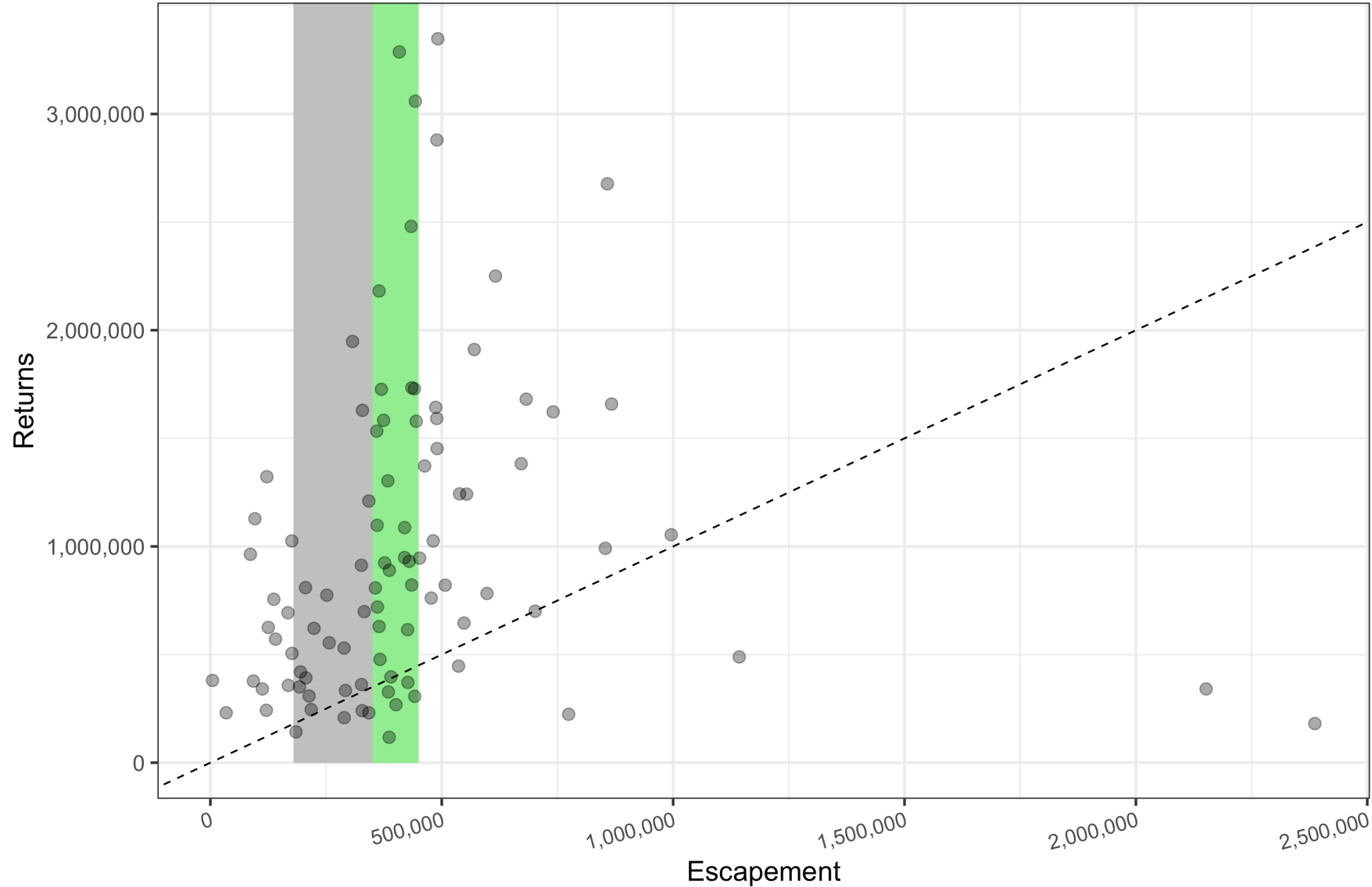
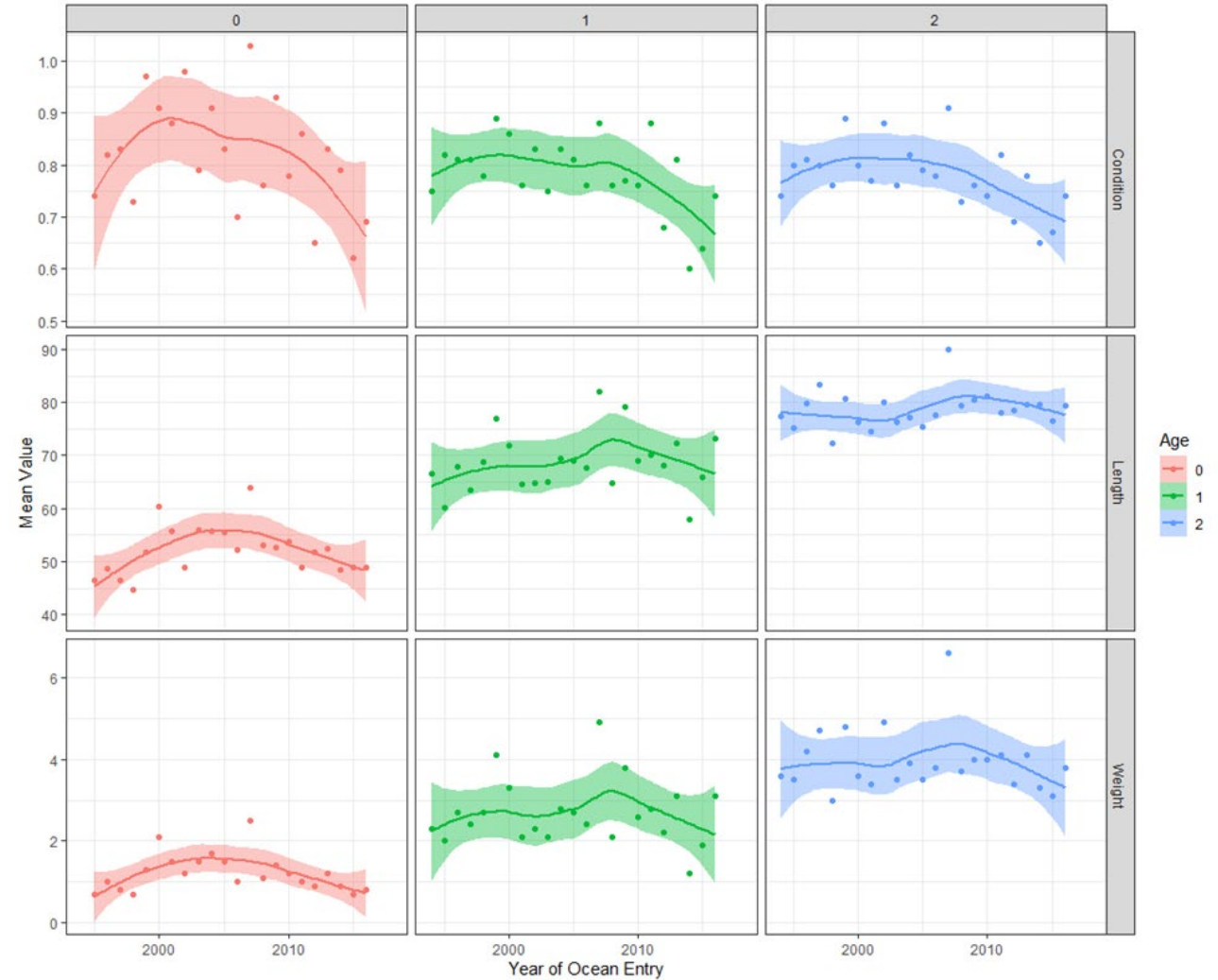
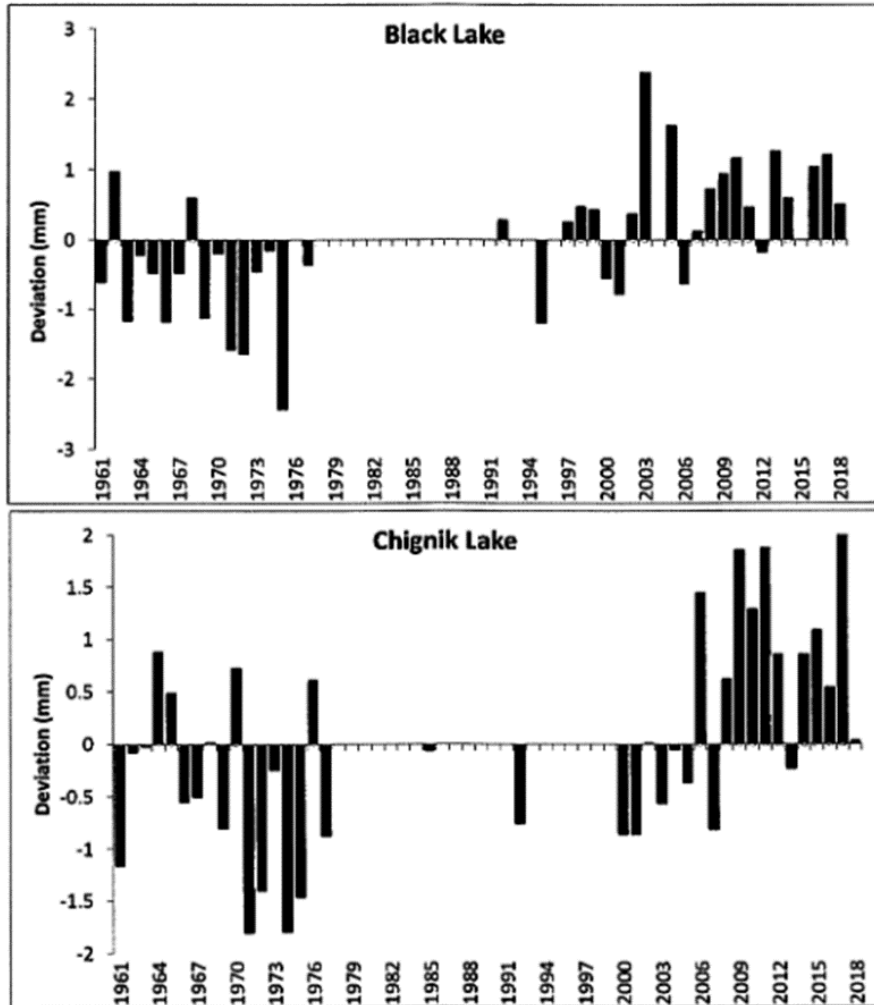


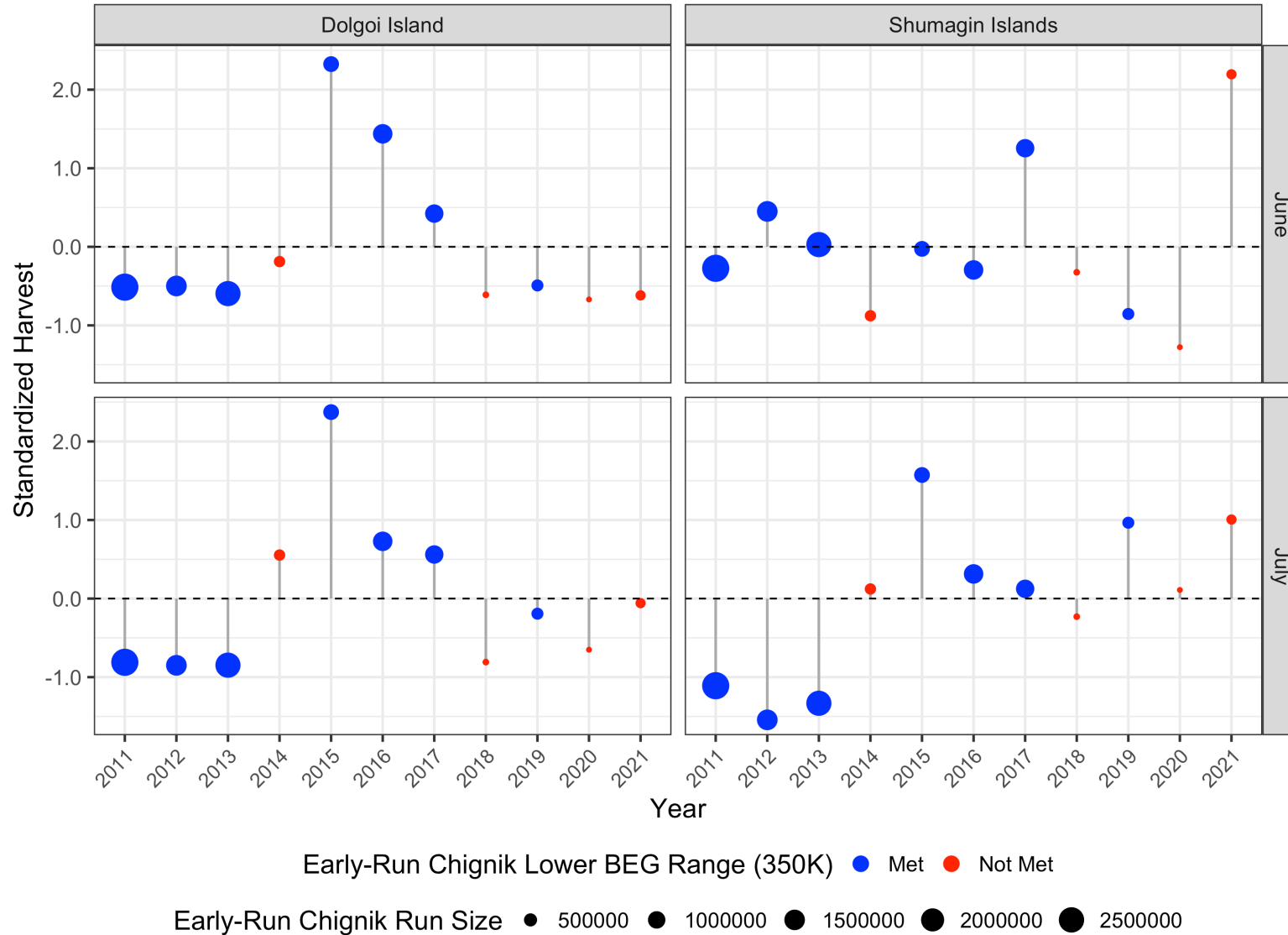
Chignik Early-Run Sockeye Escapement and Returns: 1922-2015



We Did Not Find Evidence for a Chronic Negative Freshwater Habitat Issue from Smolt Studies



Dolgoi and Shumagin Harvest Levels Since 2018 Have Generally Been Below Last Decade's Average



Low Survival Due to Marine Environment Seems Most Likely Explanation for Recent Low Chignik Sockeye Returns

