

Submitted by John Murray
March 17 2022 re opposition
to PC 462 with ADFG
Tables/maps

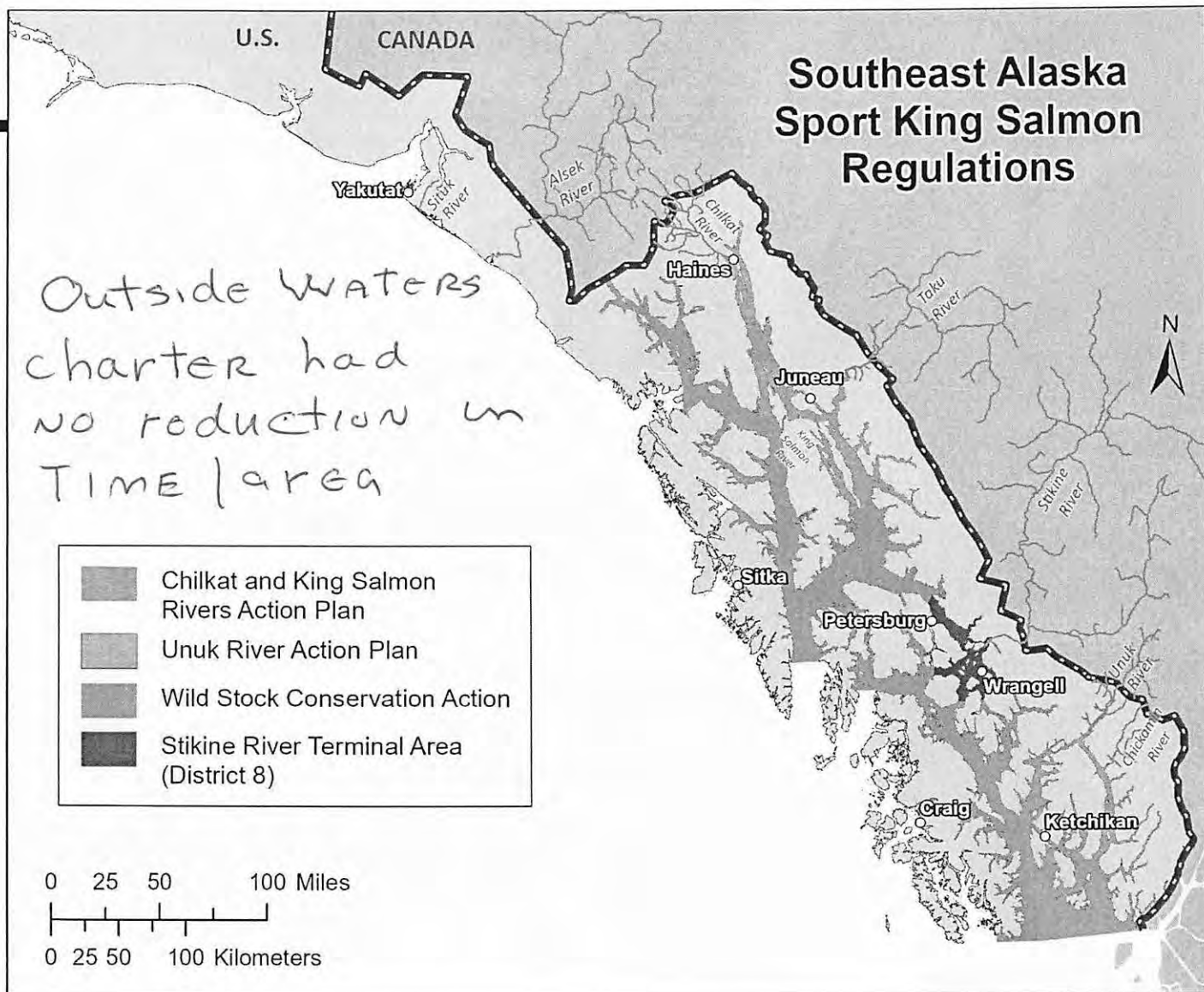
These Tables/maps (ADFG)
show the extent of what has
already been compromised
VIA Stock of Concern
Action Plans by Board
action in 2018.

They show the loss of
harvest opportunity in the
Spring and Winter Troll
Fishery to the Trollers.

The corresponding table
and map show the harvest
by Charters in different
Southeast areas (Regionwide)
The maps shows the Outside
Charter Fleet had no
reduction in Time/Area
BUSINESS as usual!!!

King Salmon Sport Regulations

Wild stock Protection



2

Proposal 93
PC 462

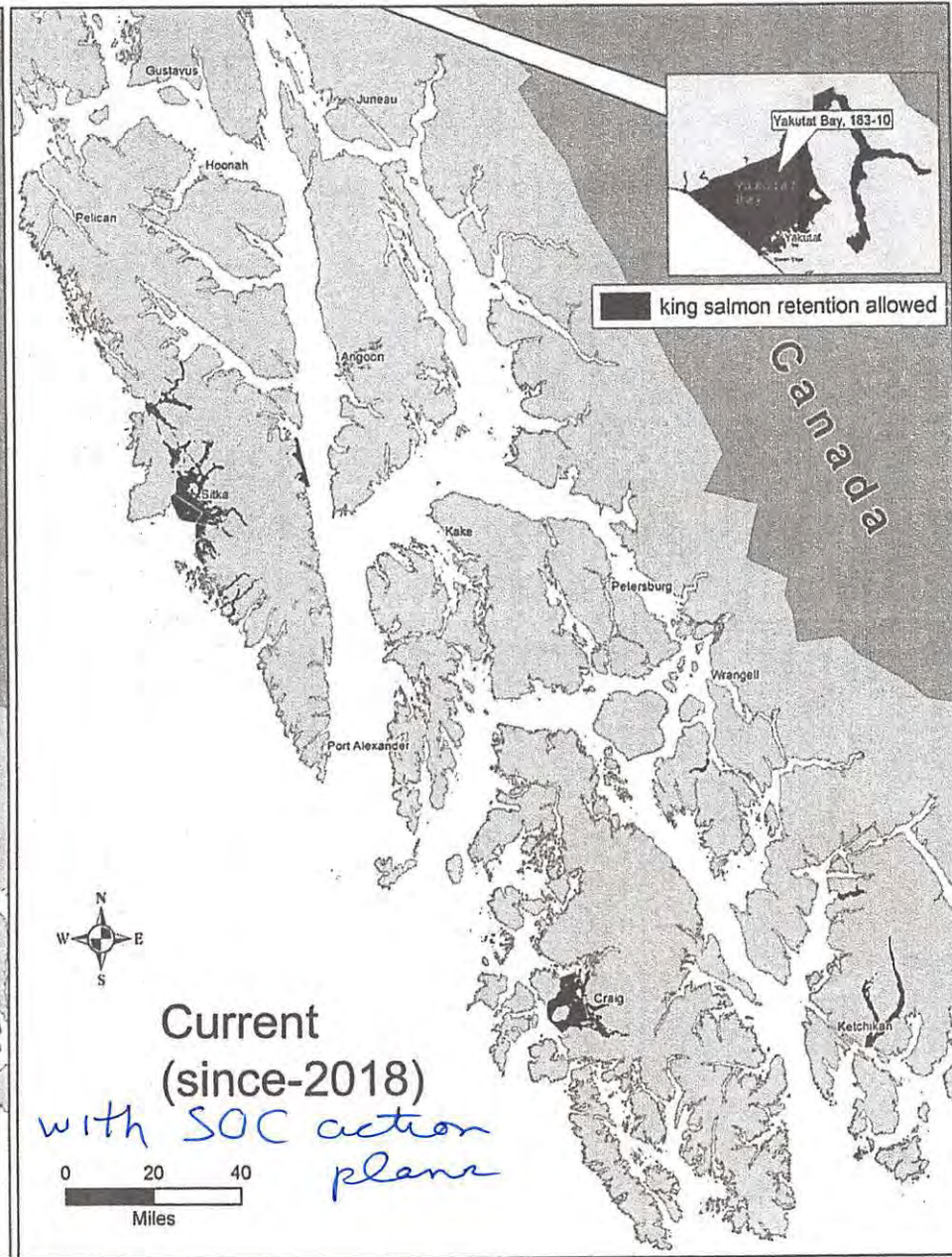
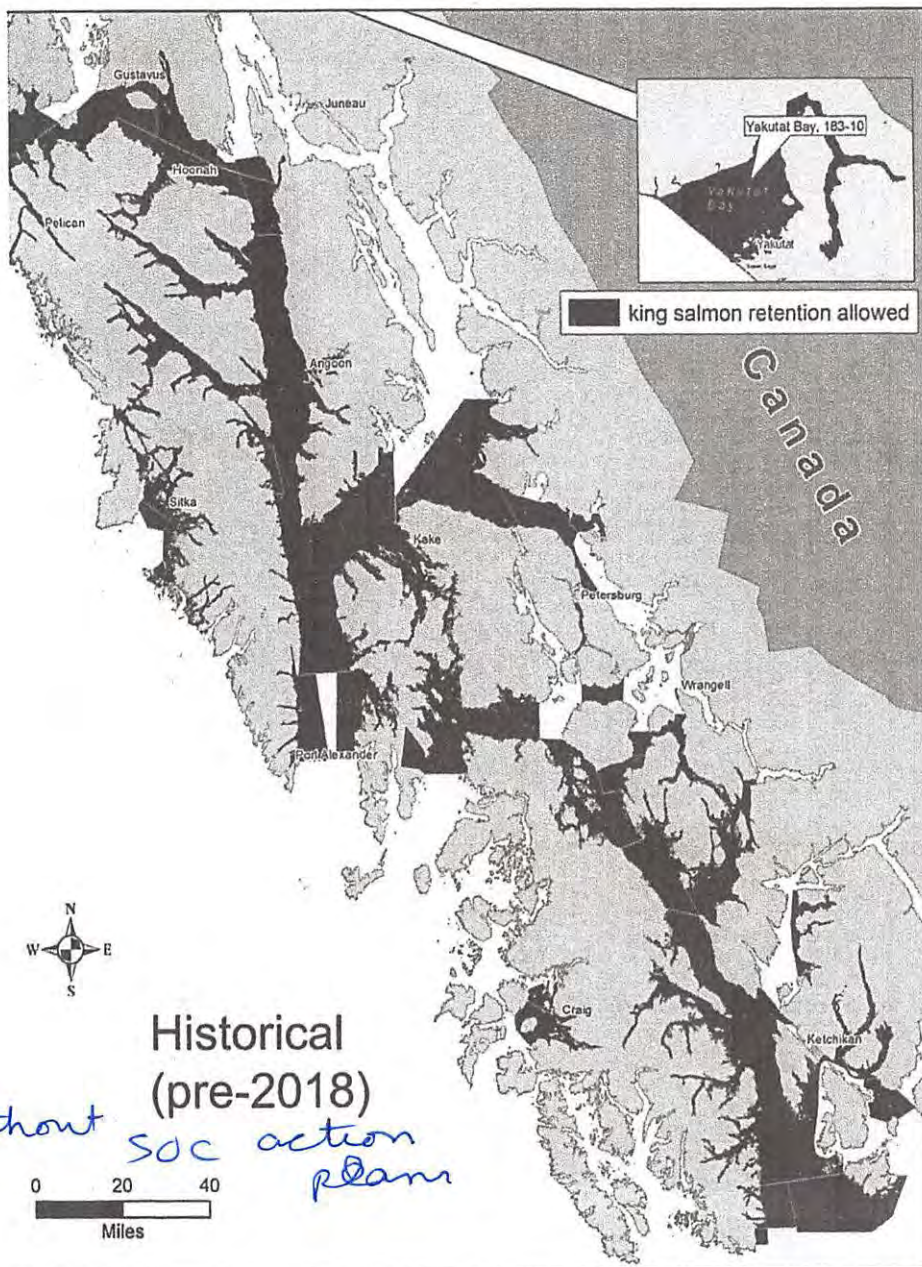
CHARTER HARVESTS

Mandatory logbooks for charter vessels fishing in marine waters were implemented in 1998. The logbook estimates of king salmon harvests for SEAK have varied from 16,687 to over 57,000 during 1998–2019 (Table 13). From 2008 to 2016, the total regionwide estimated charter harvest of king salmon averaged about 35,500 fish, which was a 21% decrease compared to the 1998–2007 time period. During the 2008–2016 time period, an average of 81% of the charter harvest occurred in the outer coast fisheries (Sitka and PWI) with an average of 56% occurring off of Sitka and 24% off of the west coast of PWI.

Table 13.—Estimated charter harvest of king salmon (clients only) in Southeast Alaska as determined from saltwater logbook and vessel registration program, 1998–2020.

Year	SWHS Area ^a								Total
	Ketchikan	Prince of Wales	Petersburg-Wrangell	Sitka ^c	Juneau	Haines-Skagway	Glacier Bay ^c	Yakutat	
1998	1,144	10,895	1,024	18,072	2,060	1,050	525	219	34,989
1999	4,116	7,633	979	17,462	3,035	1,203	505	239	35,172
2000	2,968	5,440	651	14,834	2,601	1,461	1,672	433	30,060
2001	4,807	7,811	1,099	19,360	2,841	1,335	2,304	792	40,349
2002	4,956	11,293	831	20,954	2,828	998	2,708	542	45,110
2003	6,254	8,750	905	21,286	2,504	1,713	1,912	242	43,566
2004	6,256	14,680	686	27,181	2,871	1,280	3,822	239	57,015
2005 ^b	6,662	14,568	1,600	24,658	2,597	1,056	2,431	262	53,834
2006	4,913	15,372	1,727	30,078	1,650	638	2,926	273	57,577
2007	4,630	12,189	1,232	27,201	1,894	476	3,399	288	51,309
2008	2,405	3,099	429	13,093	807	153	900	312	21,198
2009	2,772	4,137	345	15,509	1,035	235	1,868	405	26,306
2010	2,499	5,579	356	16,415	605	193	1,595	113	27,355
2011	3,460	9,887	465	22,545	658	159	2,742	197	40,113
2012	2,537	6,672	329	15,207	1,012	207	1,166	197	27,327
2013	2,323	6,779	477	13,230	883	196	2,341	240	26,469
2014	4,238	12,762	1,098	31,009	916	135	3,817	414	54,389
2015	3,844	14,092	855	26,663	1,238	131	3,732	362	50,917
2016	2,286	15,258	819	25,693	416	63	1,148	138	45,821
2017	3,285	12,180	1,199	16,518	307	1	1,770	233	35,493
2018	2,096	5,892	541	6,447	259	4	1,265	183	16,687
2019	1,787	5,878	671	11,103	457	9	1,158	218	21,281
2020 ^d	367	6,968	501	12,262	37	0	1,625	193	21,953
Average									
1998–2007	4,671	10,863	1,073	22,109	2,488	1,121	2,220	353	44,898
2008–2017	2,965	9,045 ²⁴	637	19,588 ⁵⁶	788	147	2,108	261	35,539
2017–2020	1,417	6,246 ²⁹	571	9,937 ⁵²	251	4	1,349	198	19,974
Average %									
2011–2020	8%	29%	2%	52%	2%	0%	6%	1%	

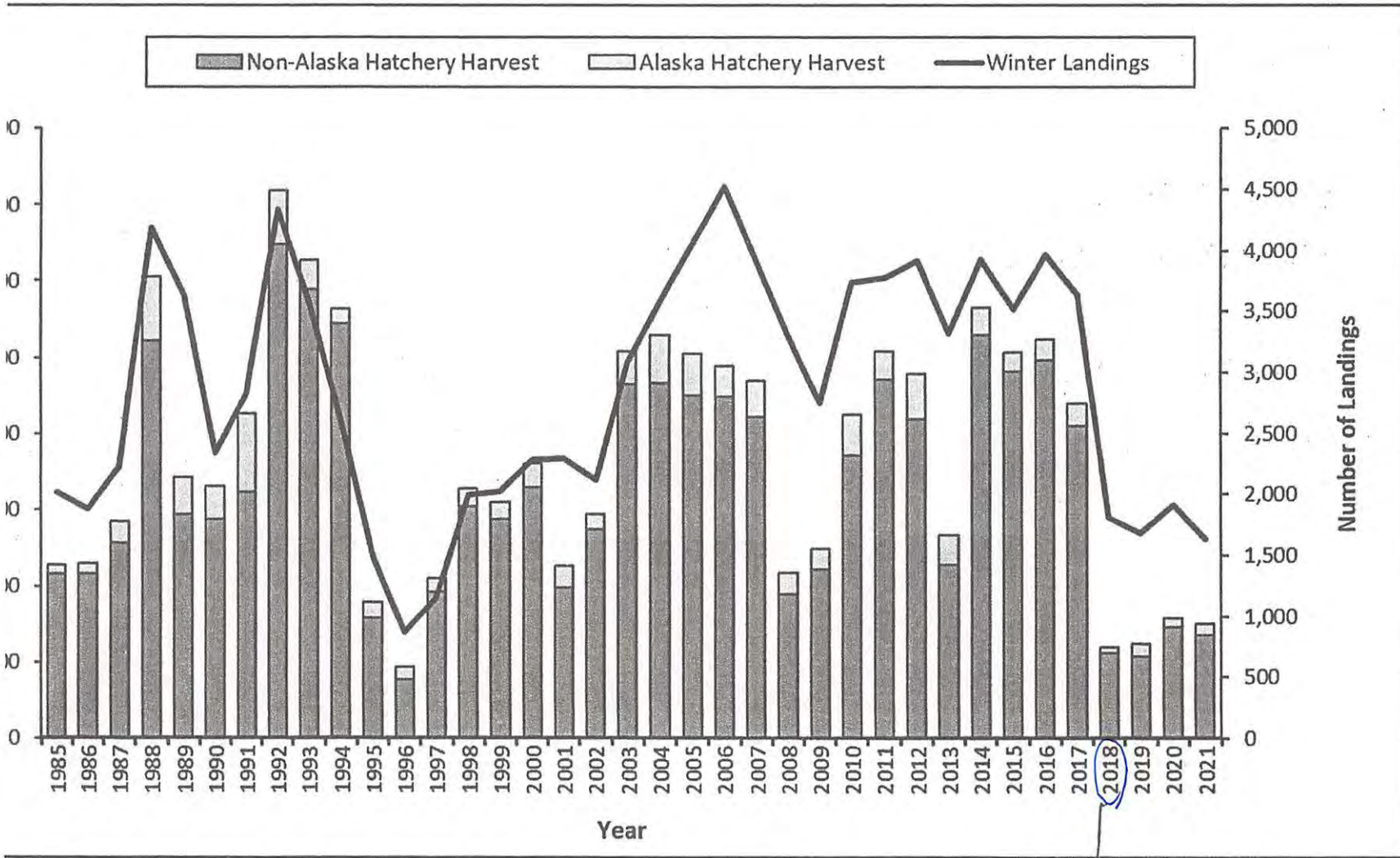
^a Statewide Harvest Survey (SWHS) area is assigned based on salmon statistical area, bottomfish statistical area, and port of offloading, in that order.
^b Unique angler identification information was not collected, so harvest is for all anglers; crew members were not allowed to retain king salmon.
^c The boundary between the Sitka and Glacier Bay SWHS areas was modified in 2000.
^d 2020 data is preliminary.



Winter King Salmon Fishery

RC-3 Tab-17

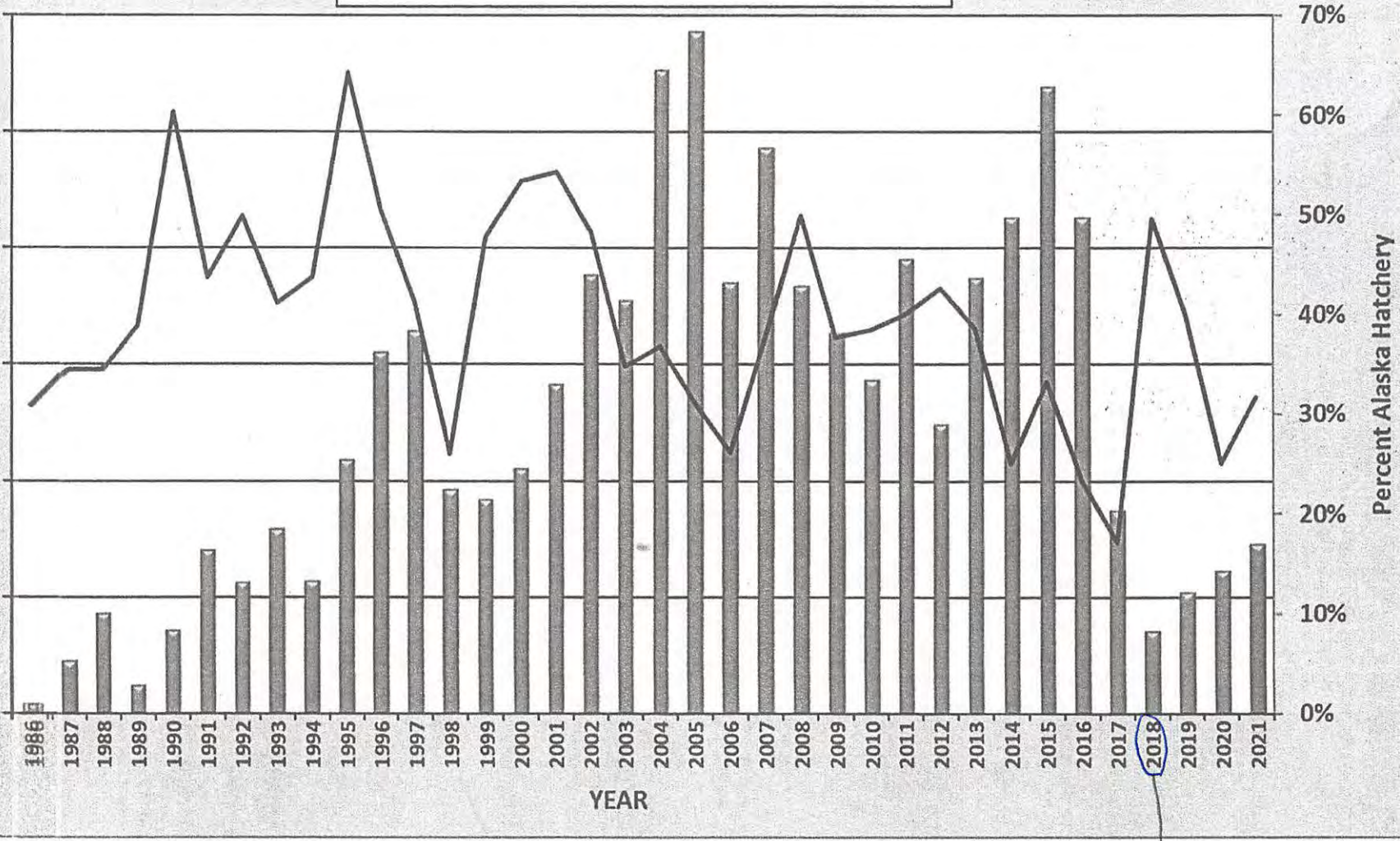
ADFG TROLL



SINCE stocks of
CONCERN
ACTION PLANS

Spring Fishery King Salmon Harvests, 1986-2021

■ Total harvest — Alaska hatchery %



RC3 - TAB17

ADFG
TROLL

SINCE STOCK OF CONCERN
Action Plans