

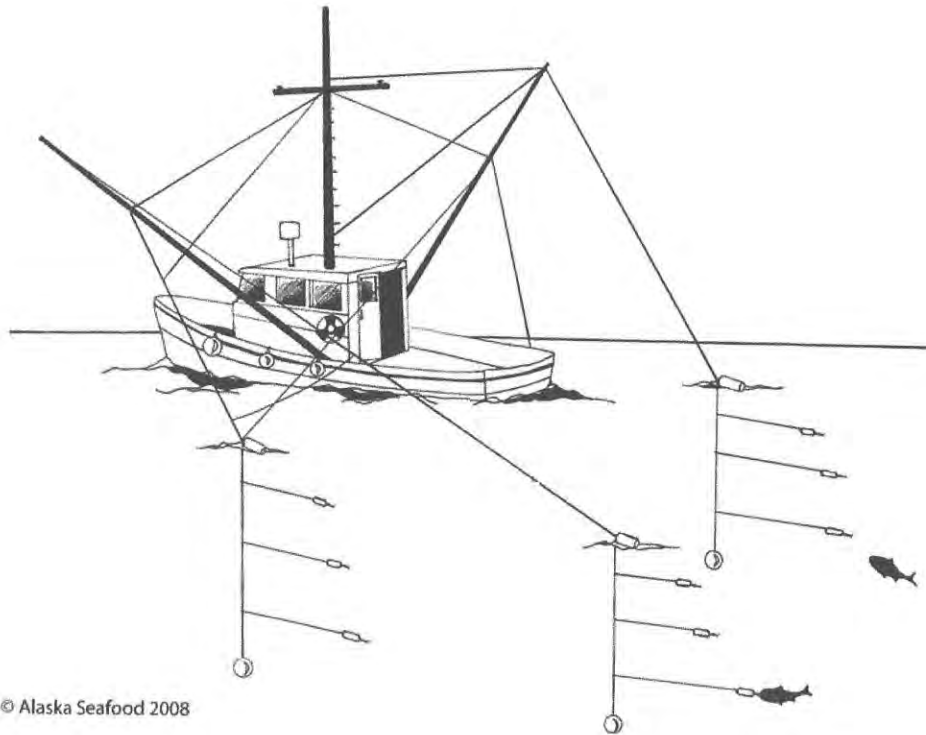
Tim O'Conner



- 22 years in Alaska
- Invested in rural SE- Craig
- Mayor of Craig 4 years
- EMT- 12 yrs/Fire Chief- 8 yrs
- Troller since 2008
- ATA board member- 3 years
- FV Virginia Rose
- Trolling- like sportfishing; fish have to bite



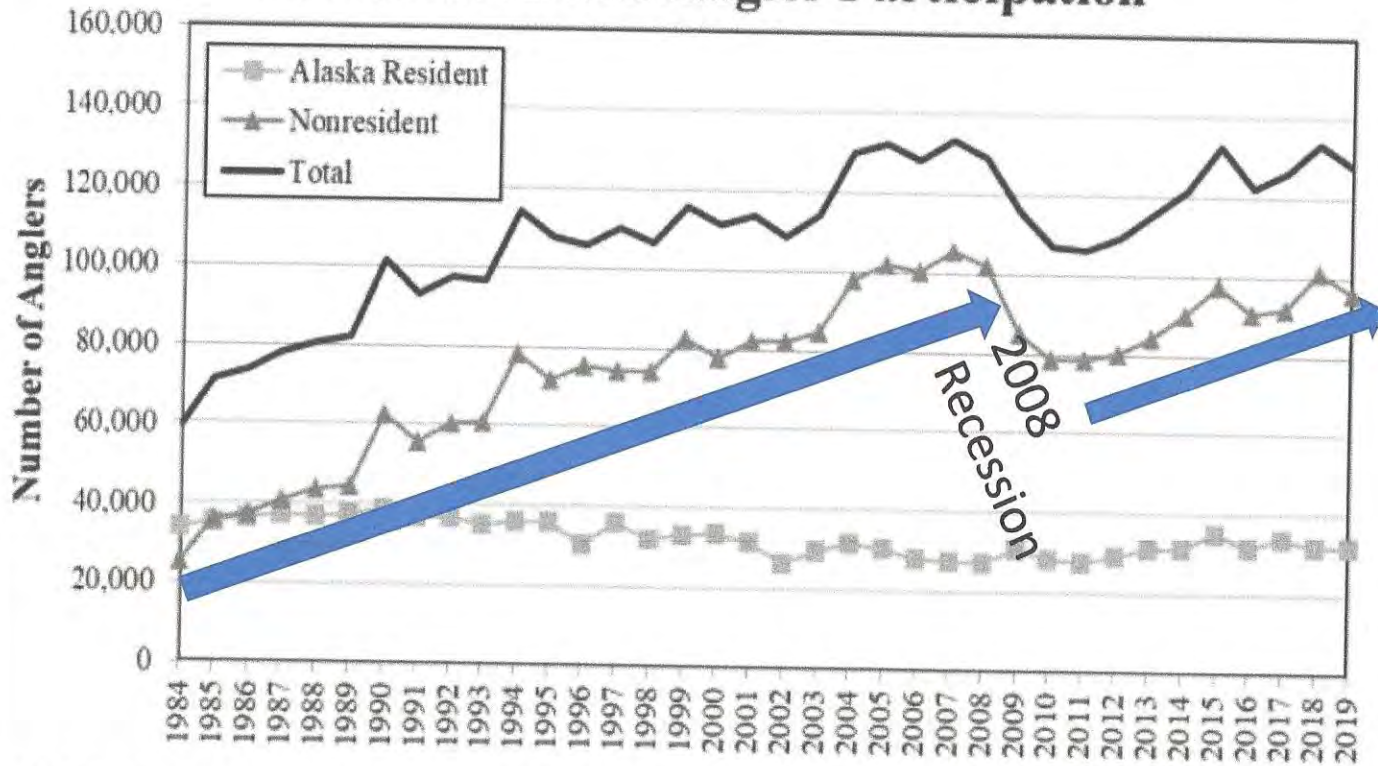
What is commercial trolling?



- 4 main lines, each with multiple leaders
- Hook-and-line fishery ==> Fish have to be in biting mood
- Gear is specie selective
- Catch rate is limited by required manual labor
- Fish landed one-at-a-time by hand
- Fish quickly bled/cleaned/iced to maintain quality
- Low catch rate => need long openings to produce volume
- Low catch rate allows superior handling => high prices; 2022 troll kings worth <\$100 apiece
- Few other sources of \$ in winter time in Craig/rest of rural SE

Proposal 83: FLAWED

Southeast Alaska Angler Participation



RC 3 Tab 3 SP 21-10 Overview of Sport fisheries for King Salmon in SEAK through 2020

Figure 3.—Number of resident and nonresident anglers who fished in Southeast Alaska, 1984–2019 as estimated from the Alaska Sport Fishing Survey (i.e., SWHS; available at <https://www.adfg.alaska.gov/sf/sportfishingsurvey/index.cfm?ADFG=main.home>).

- proposer's math assumes fixed effort and static efficiency
- history shows increasing sport effort under most circumstances
 - more NR anglers will mean higher harvest
- better technology will mean higher harvest
- no protection for trollers if projections are wrong
- not realistic to guarantee fixed limits regardless of changes in quota, effort, efficiency, etc. in 2023, 2024,...

King Salmon are Vital to Troll Fleet

- Kings make up over 40% of total troll ex-vessel value; Nearly 100% of value Oct-June
- When troll king quota drops below 150,000, some trollers can't stay in business. The troll quota in Tier f is only 148,500 (2020 & 2021 seasons)
- Size of troll fleet is sharply reduced as king quota drops towards 100,000. The troll quota in Tier g is only 101,300 (2019 season)
- In these lower tiers, any further reductions in troll quota directly reduces the number of viable trollers
- In 2002-2005 farmed salmon drove dock price very low making those quotas equal to ~100,000 @ current prices

Active Power Troll Permits vs Pre-season Troll Allocation

