



Participation, harvest, and catch in Upper Copper River sport, personal use, and subsistence fisheries

TRACY HANSEN, DIVISION OF SPORT FISH, UPPER COPPER/UPPER SUSITNA MANAGEMENT AREA

RC 3, TAB 11



Upper Copper – Upper Susitna Management Area

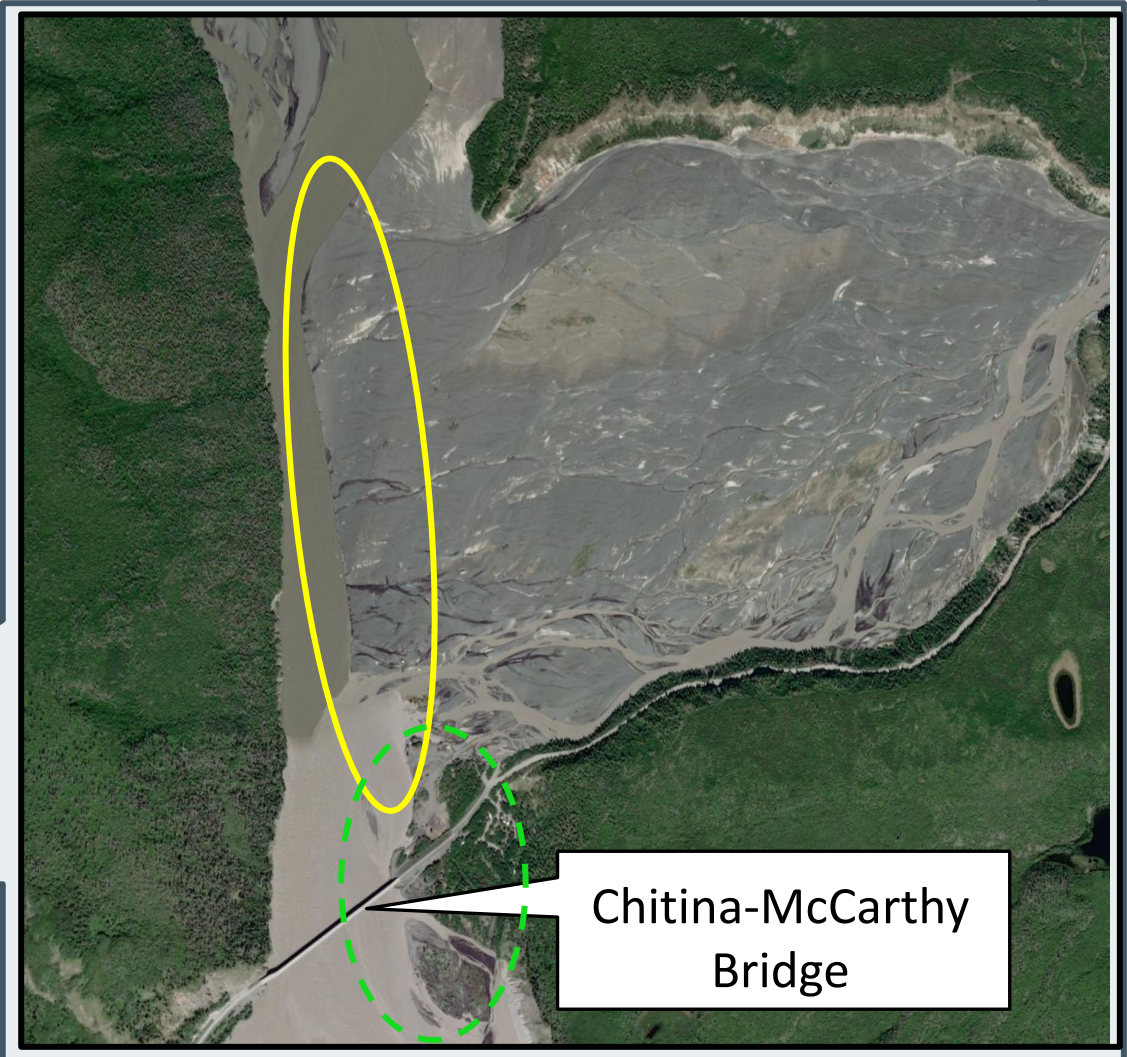
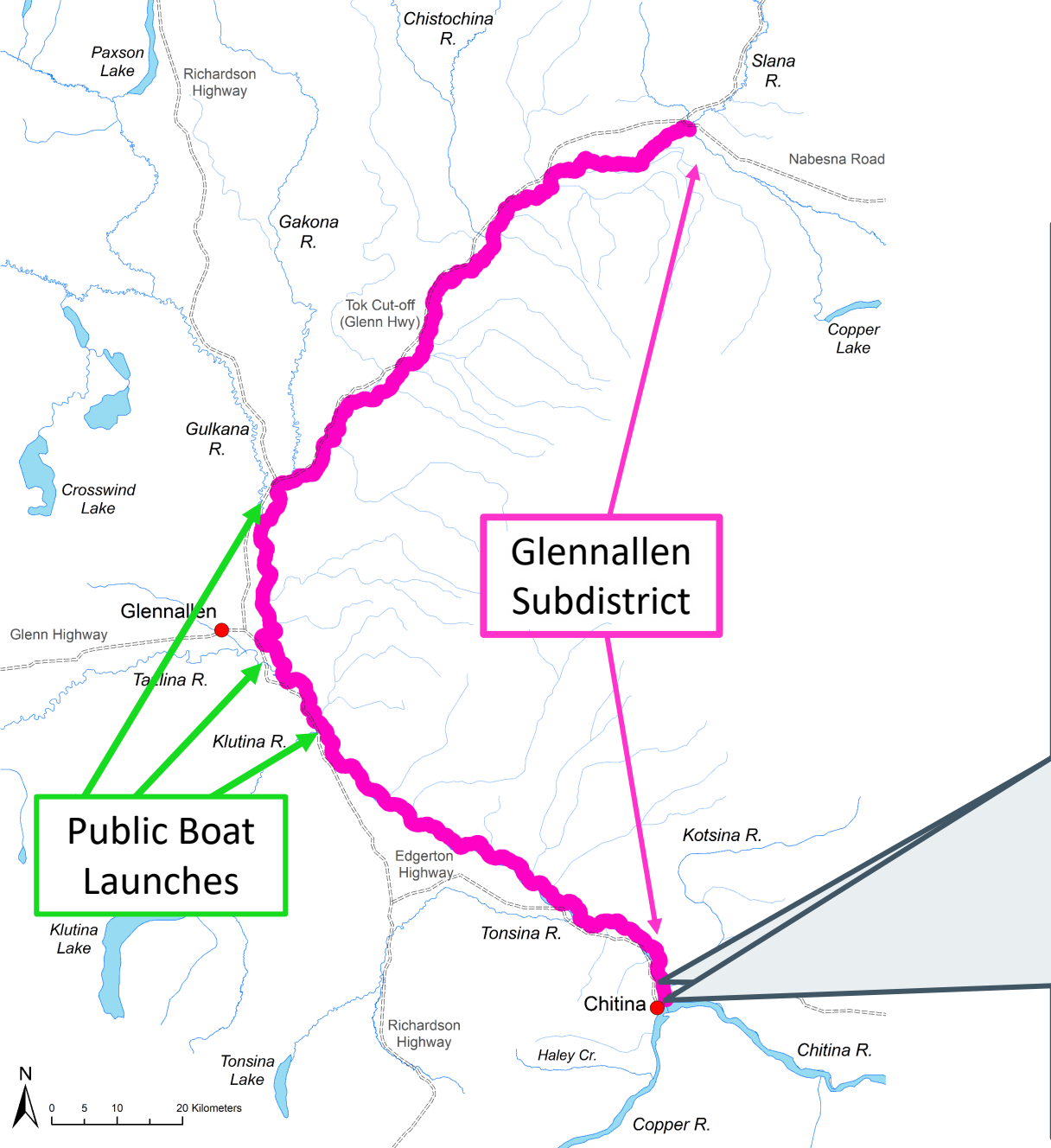




Glennallen Subdistrict Subsistence Fishery

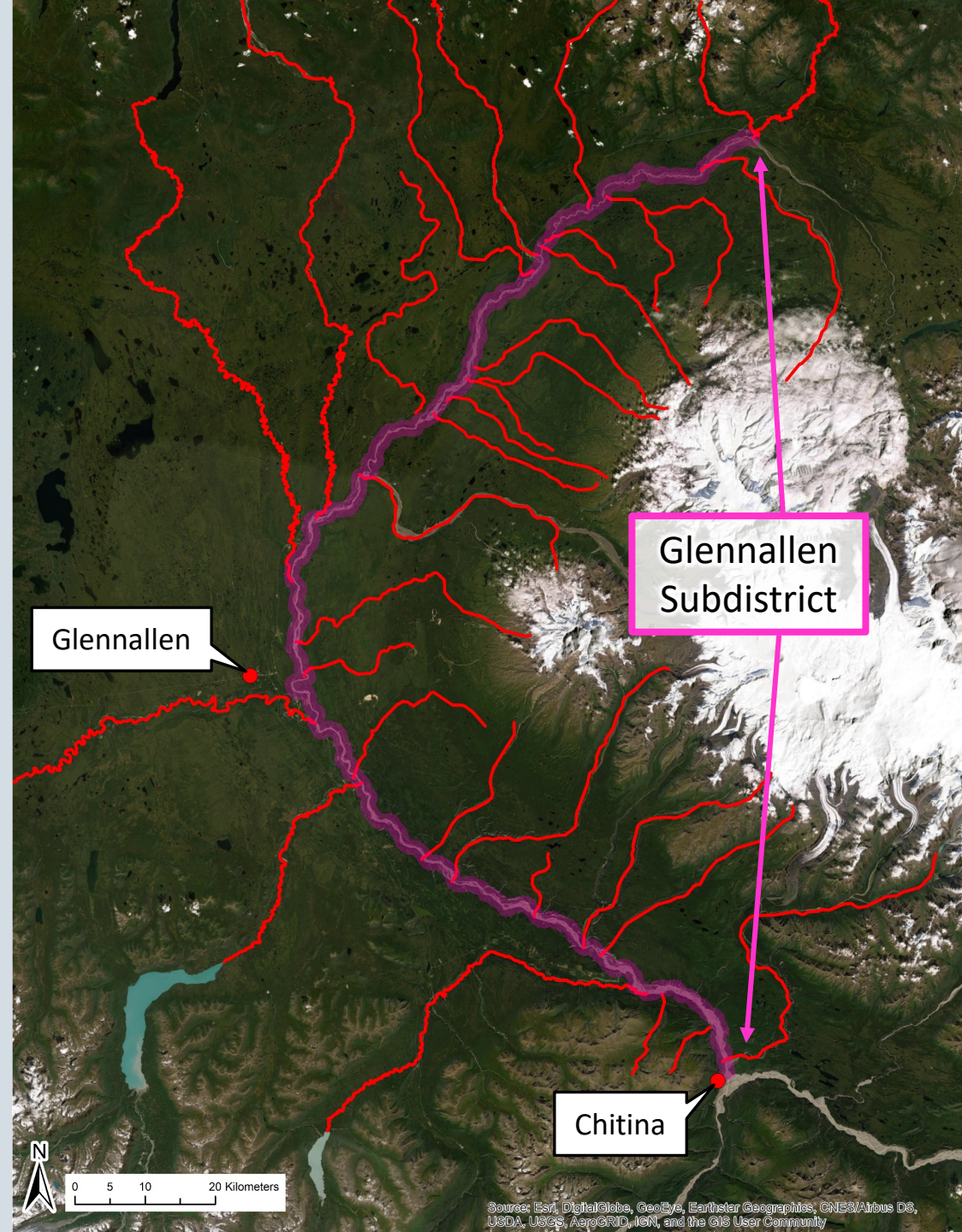
- June 1 – September 30, open continuously
- Permits required, available online or at ADF&G offices
- Fish wheel or dip net is allowed
- Limit: Household of 1=30 salmon
Household of 2 = 60 salmon
+ 10 salmon/each additional HH member
 - Can request up to 200 salmon/HH of 1 and 500 salmon/HH of 2 or more
- Dip net gear is limited to 5 king salmon
- Must record harvest on permit each day prior to leaving fishing site
- Must report participation/harvest to the Department by October 31

Glennallen Subdistrict Subsistence Fishery



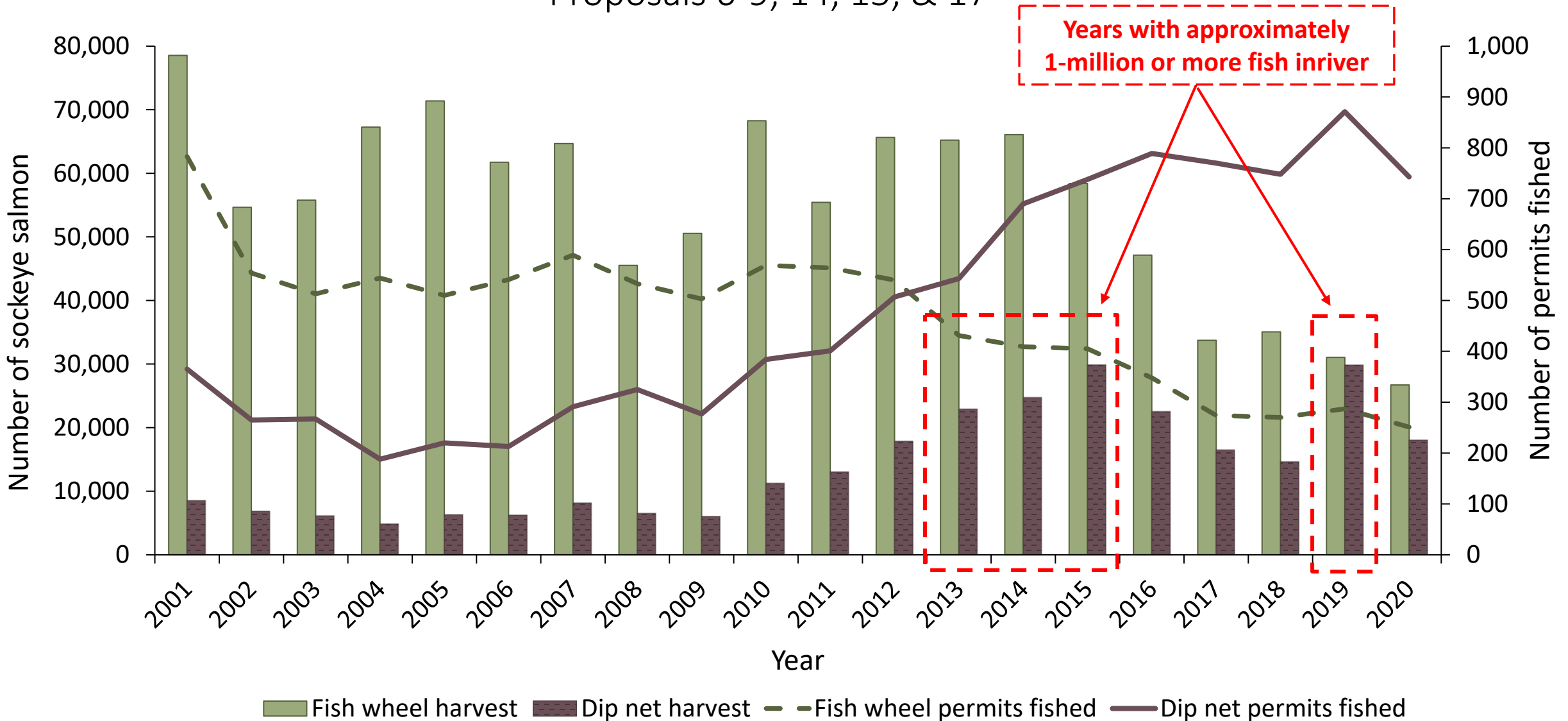
Glennallen Subdistrict

Proposal 8



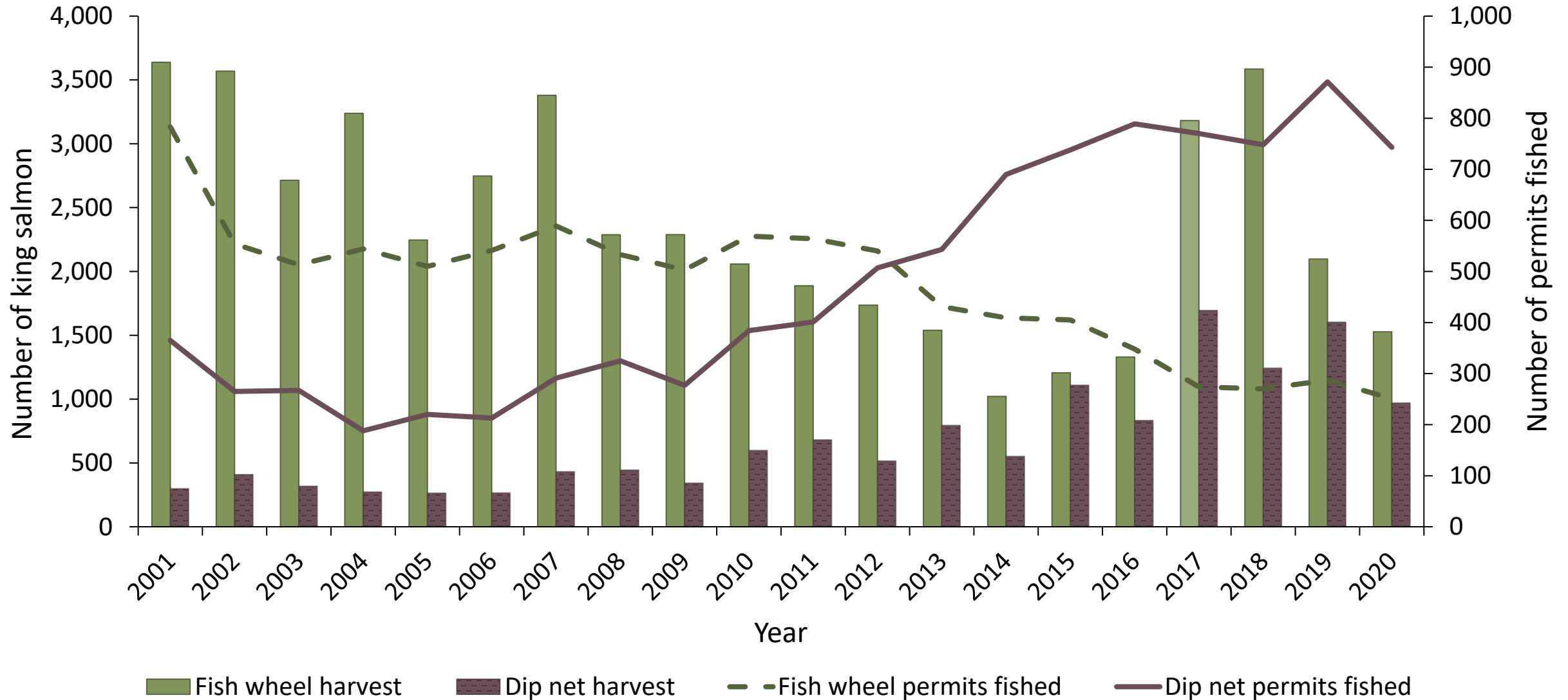
Reported harvest of sockeye salmon in the Glennallen Subdistrict by gear type

Proposals 6-9, 14, 15, & 17



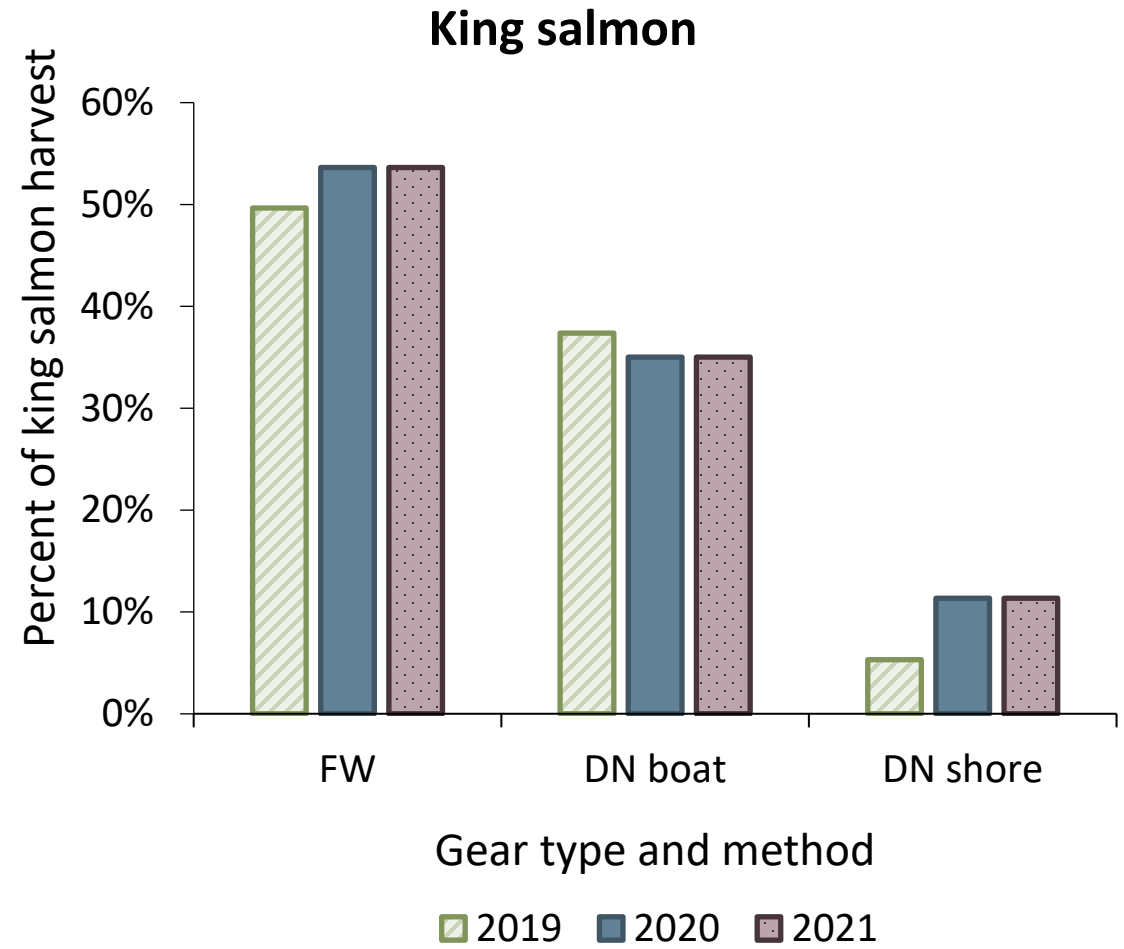
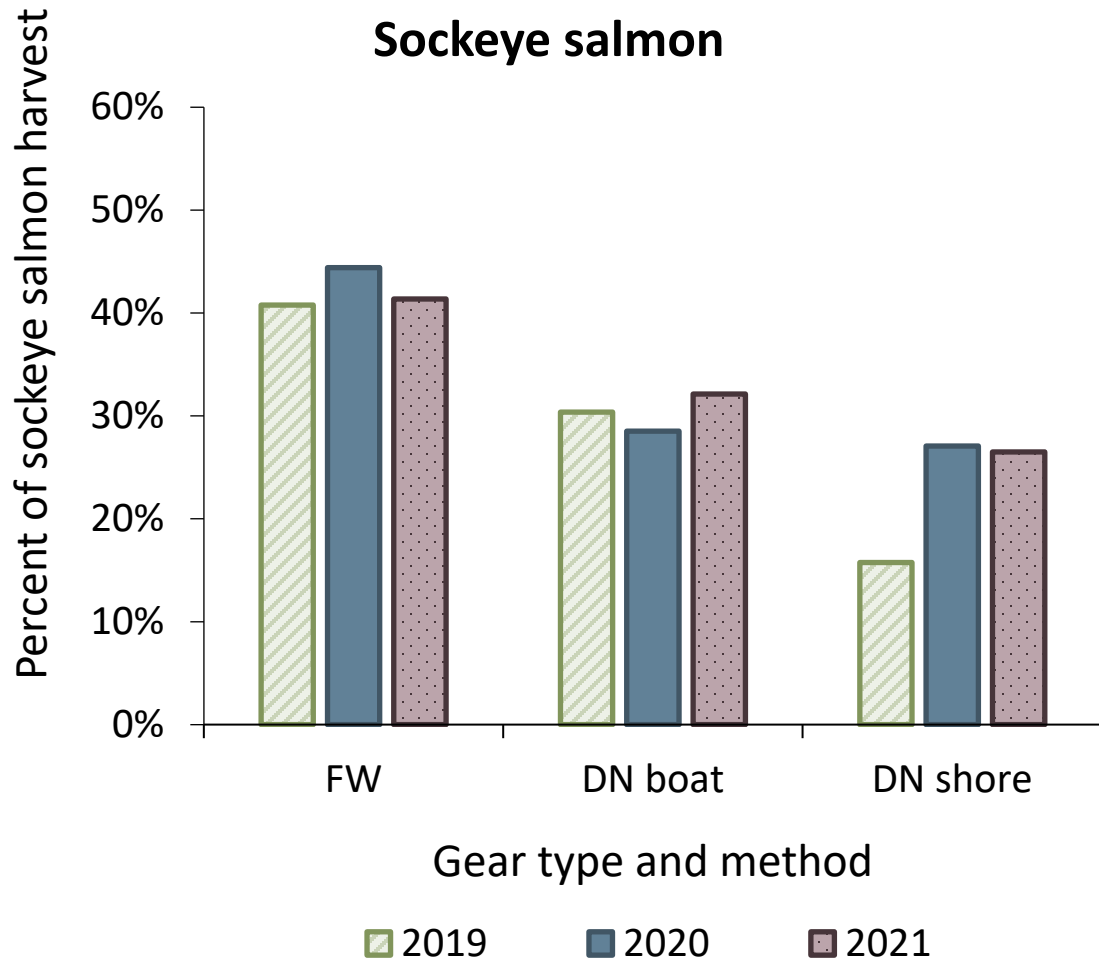
Reported harvest of king salmon in the Glennallen Subdistrict by gear type

Proposals 6-9, 14, 15, & 17



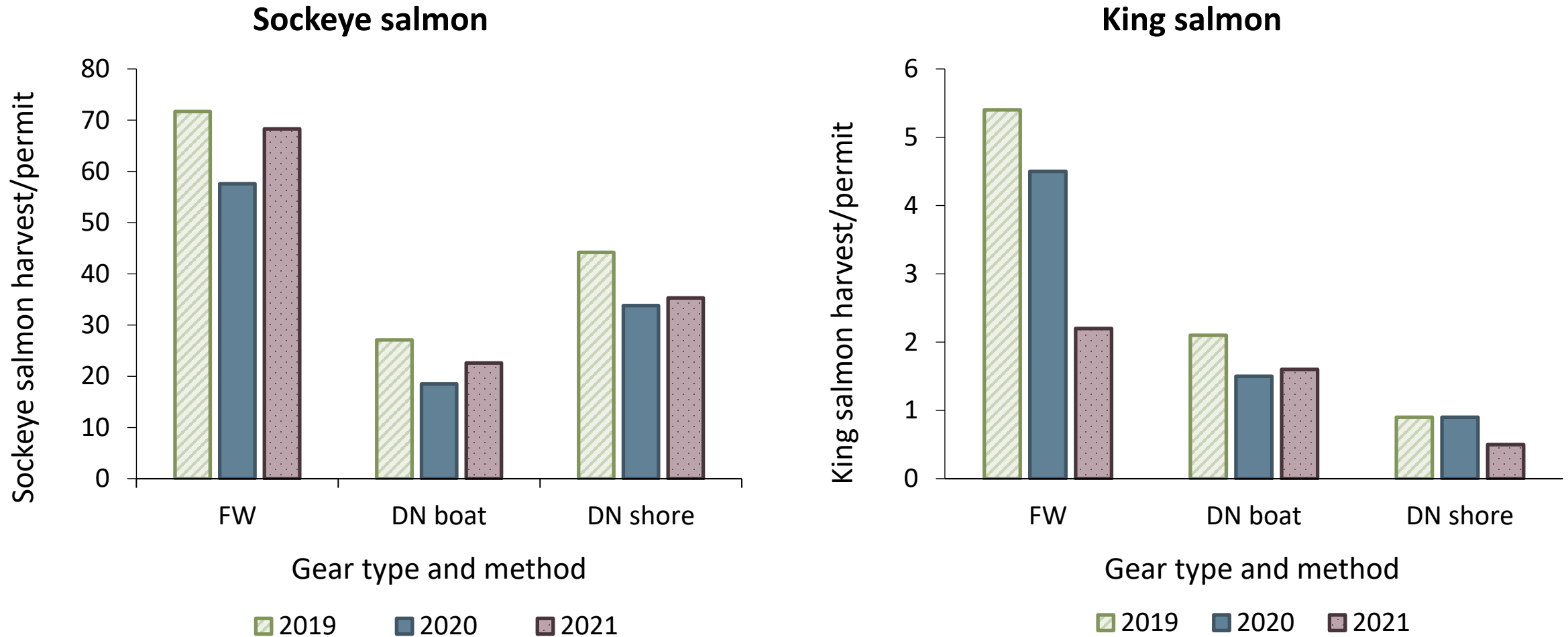
Percent of subsistence harvest of sockeye and king salmon by gear type

Proposals 6-9, 14, 15, & 17

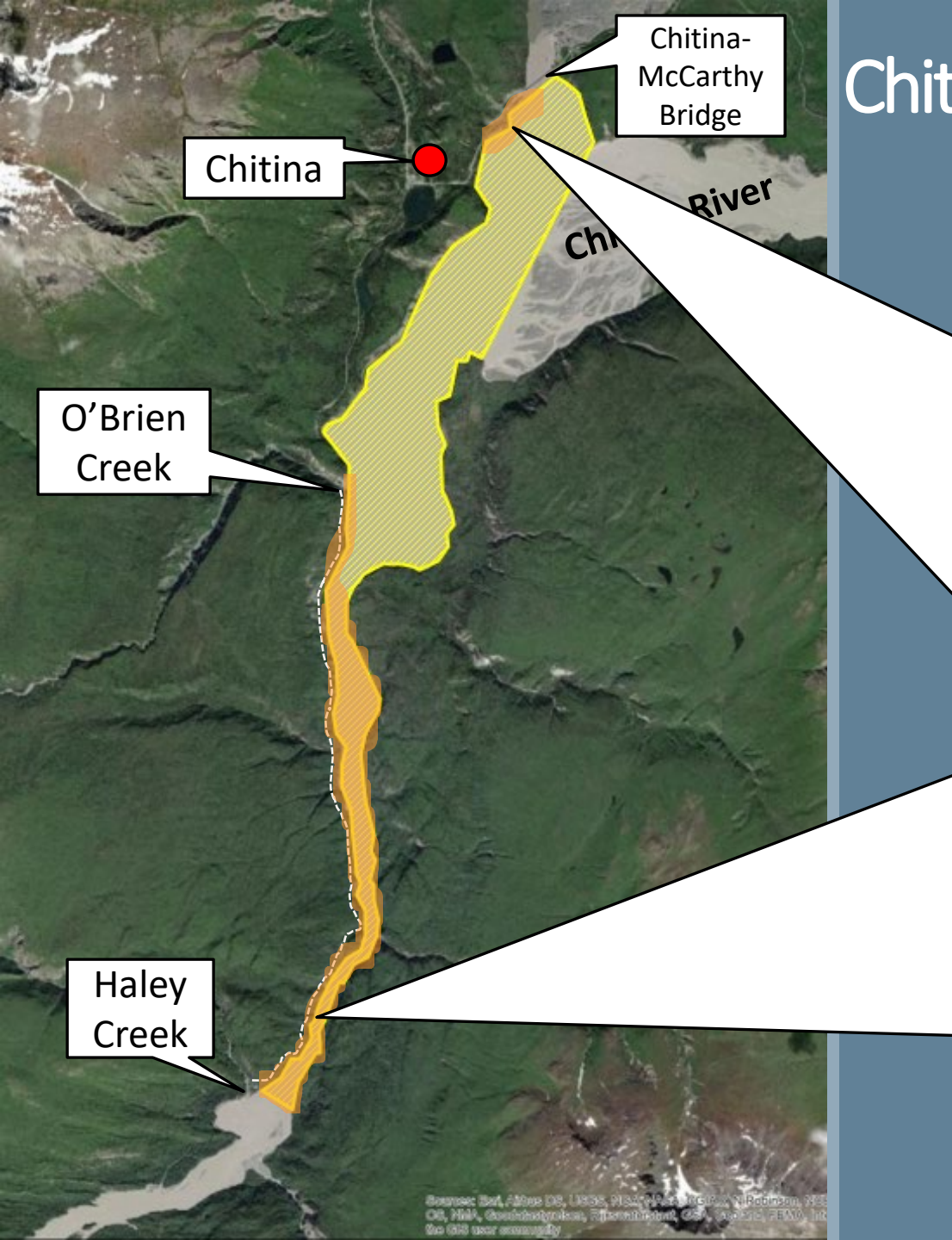


Glennallen Subdistrict subsistence sockeye and king salmon harvest

Proposals 6-9, 14, 15, & 17

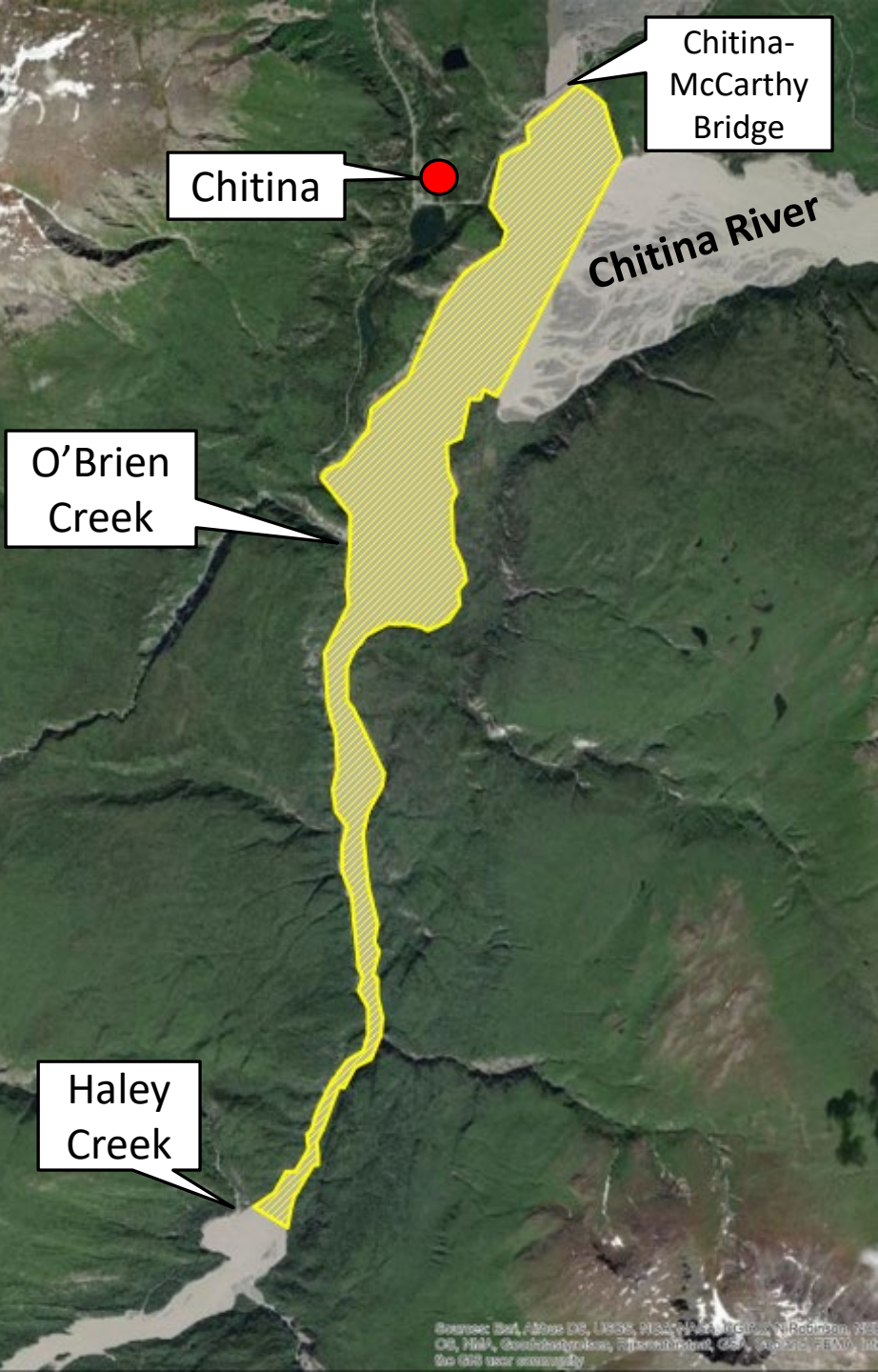


Chitina Subdistrict Personal Use Dip Net Fishery



Source: USGS, Alaska DNR, USGS, NPS, Alaska Department of Natural Resources, 2013
USGS, NPS, Alaska Department of Natural Resources, 2013. All rights reserved. Photo by
USGS under authority.

Chitina Subdistrict Personal Use Dip Net Fishery

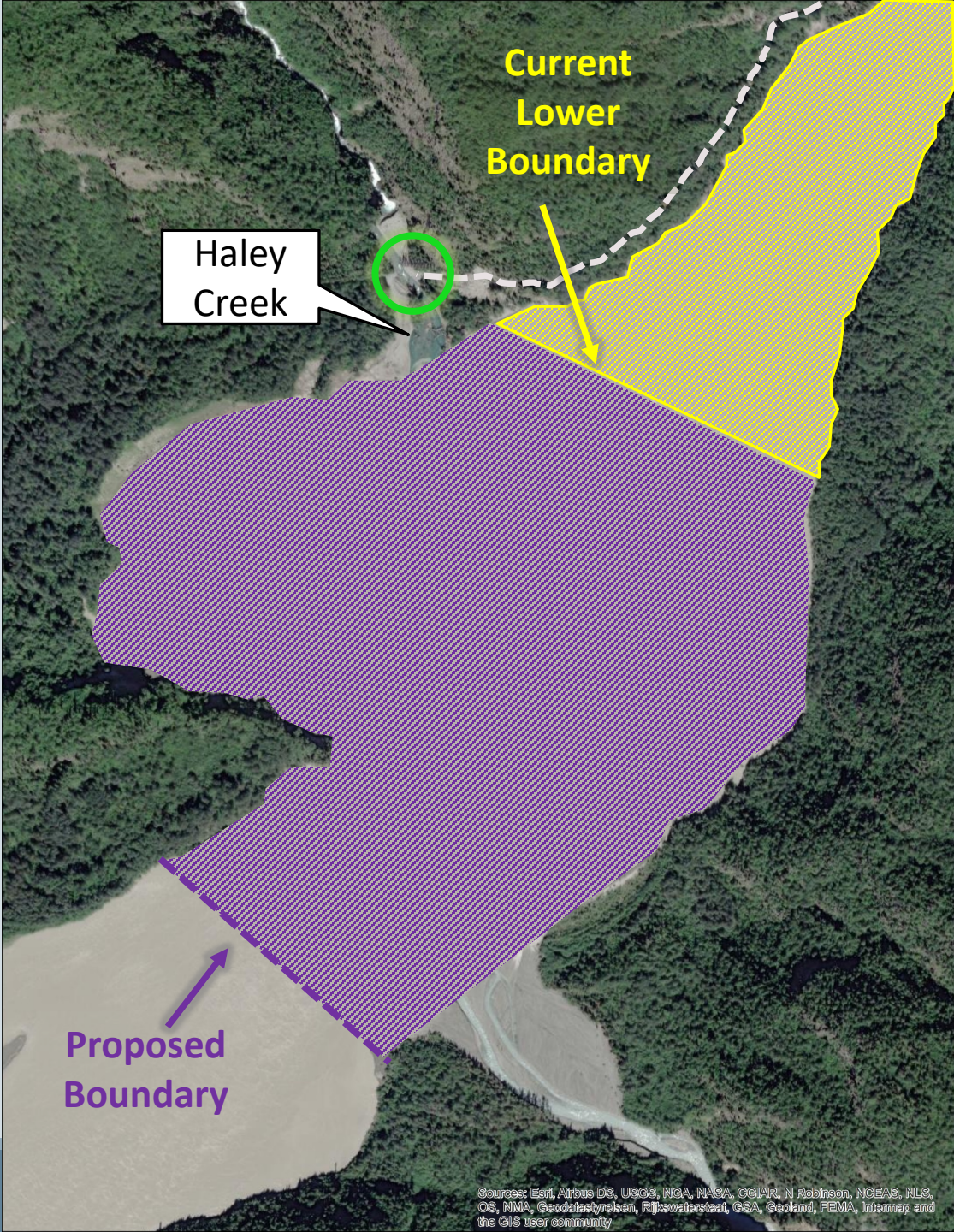


- June 7 – September 30, with weekly openers based on sonar abundance
- Permits required, available online or through e-Vendor
- Limit: 25 salmon/permit holder with 10 additional/per household member (only 1 king salmon)
- Must record harvest on permit each day prior to leaving fishing site
- Must report participation/harvest to the Department by October 15
- Failure to report results in permit holder being ineligible to obtain permit the following season

Source: Esri, DeLorme, USGS, NPS, Mapbox, Swatch, Nominatim, Swatch, OpenStreetMap contributors, Swatch, Bing, and the OpenStreetMap community.

Chitina Subdistrict

Proposal 18



Sources: Esri, Airbus DS, UCGS, NOAA, NASA, CGIAR, N Robinson, NCEAS, NLS, OS, NIMA, Geodatas/veisen, Rijkswaterstaat, ESA, Geoland, FEMA, Intermap and the GIS user community

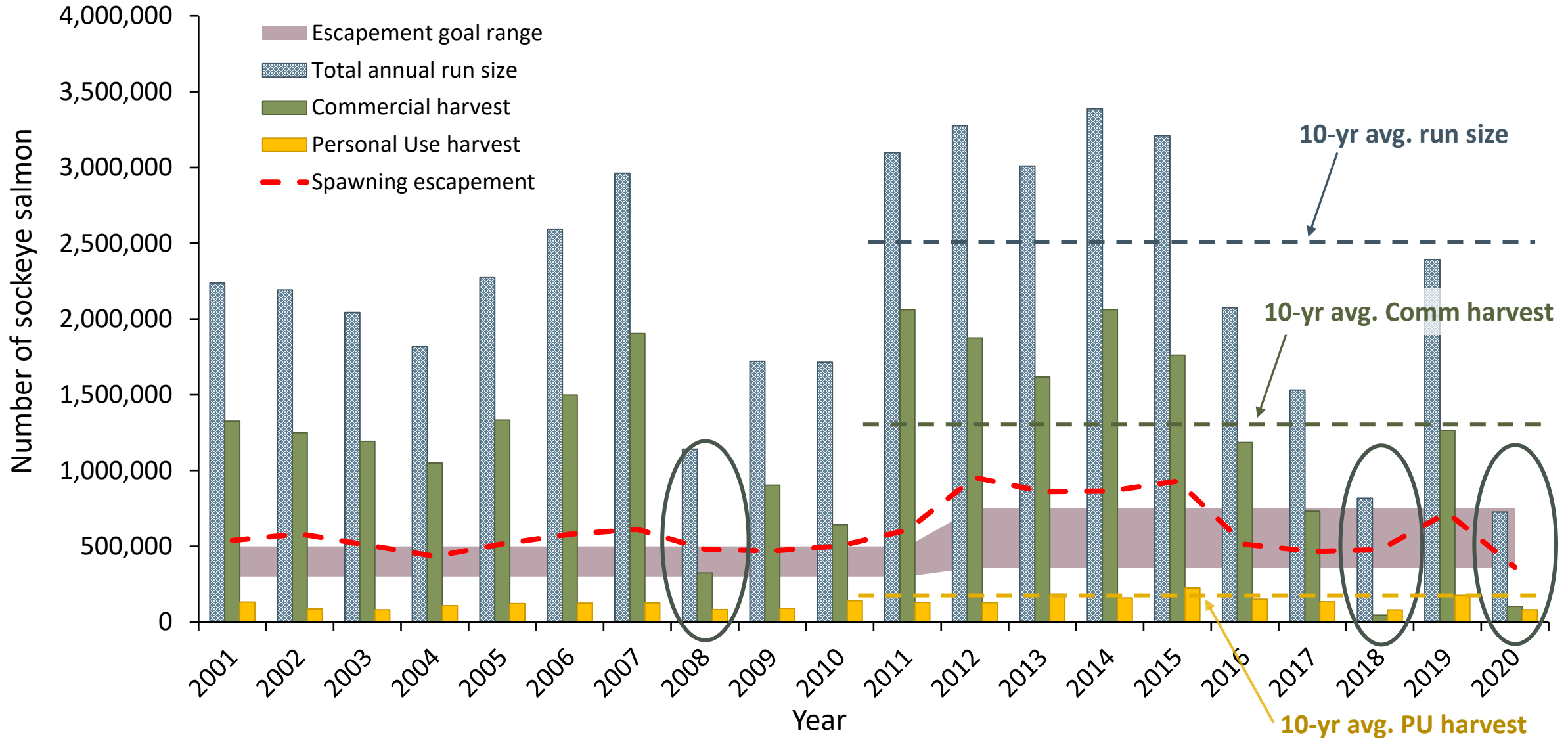
Reported personal use sockeye salmon harvest from boat and shore

Proposals 11-13 & 15



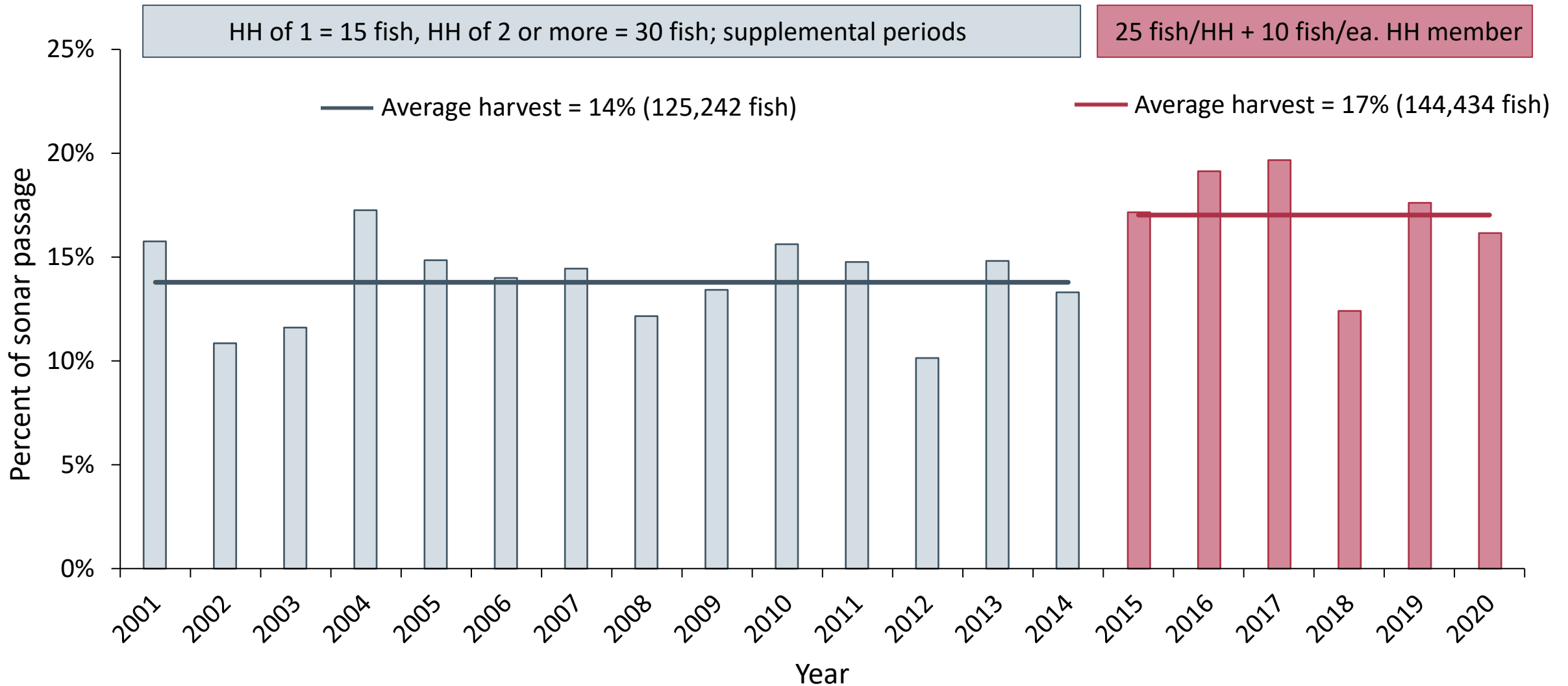
Copper River sockeye salmon run strength, harvests, and escapement

Proposal 19



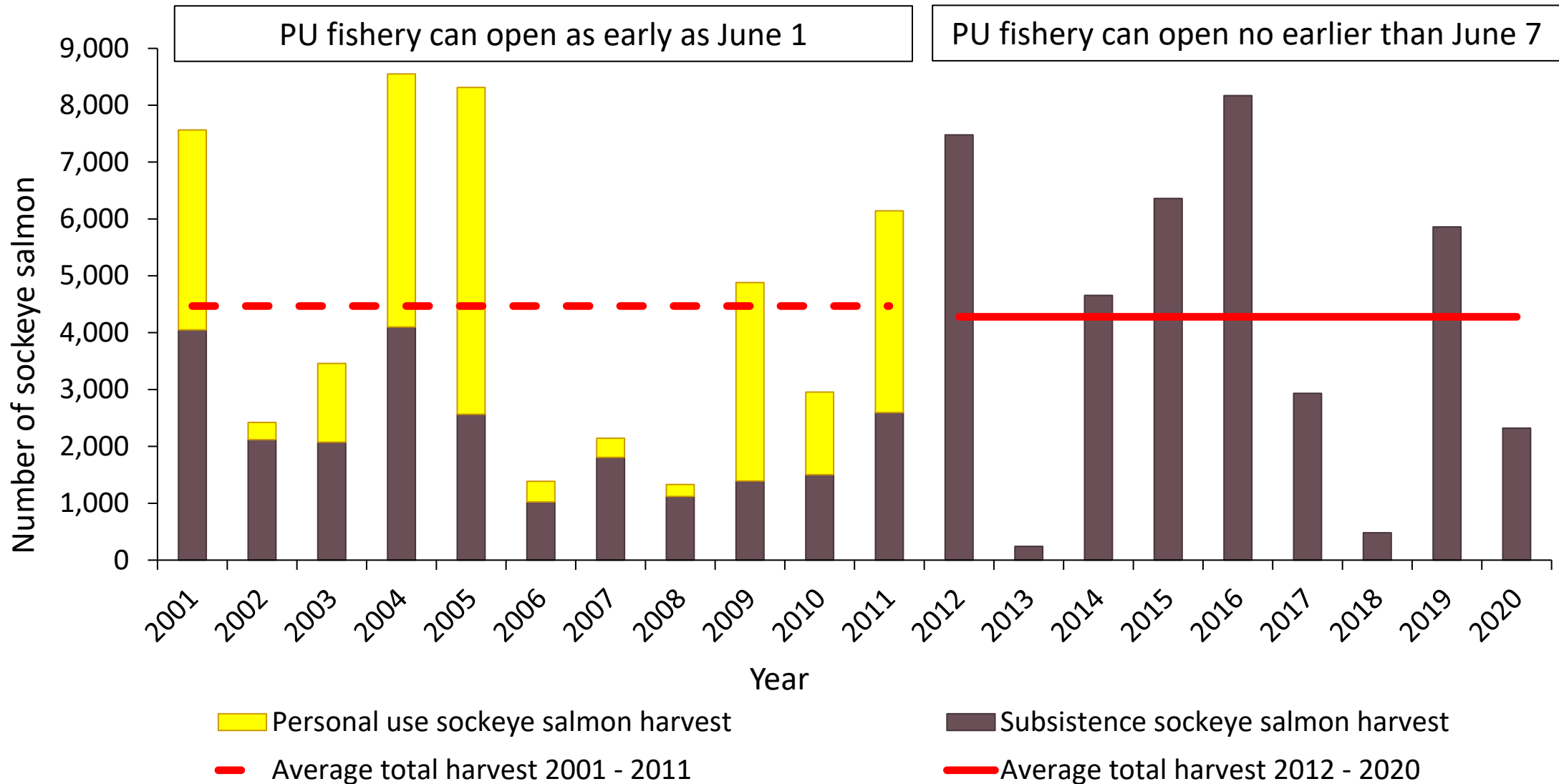
Percent of sonar passage harvested in the personal use fishery

Proposal 20

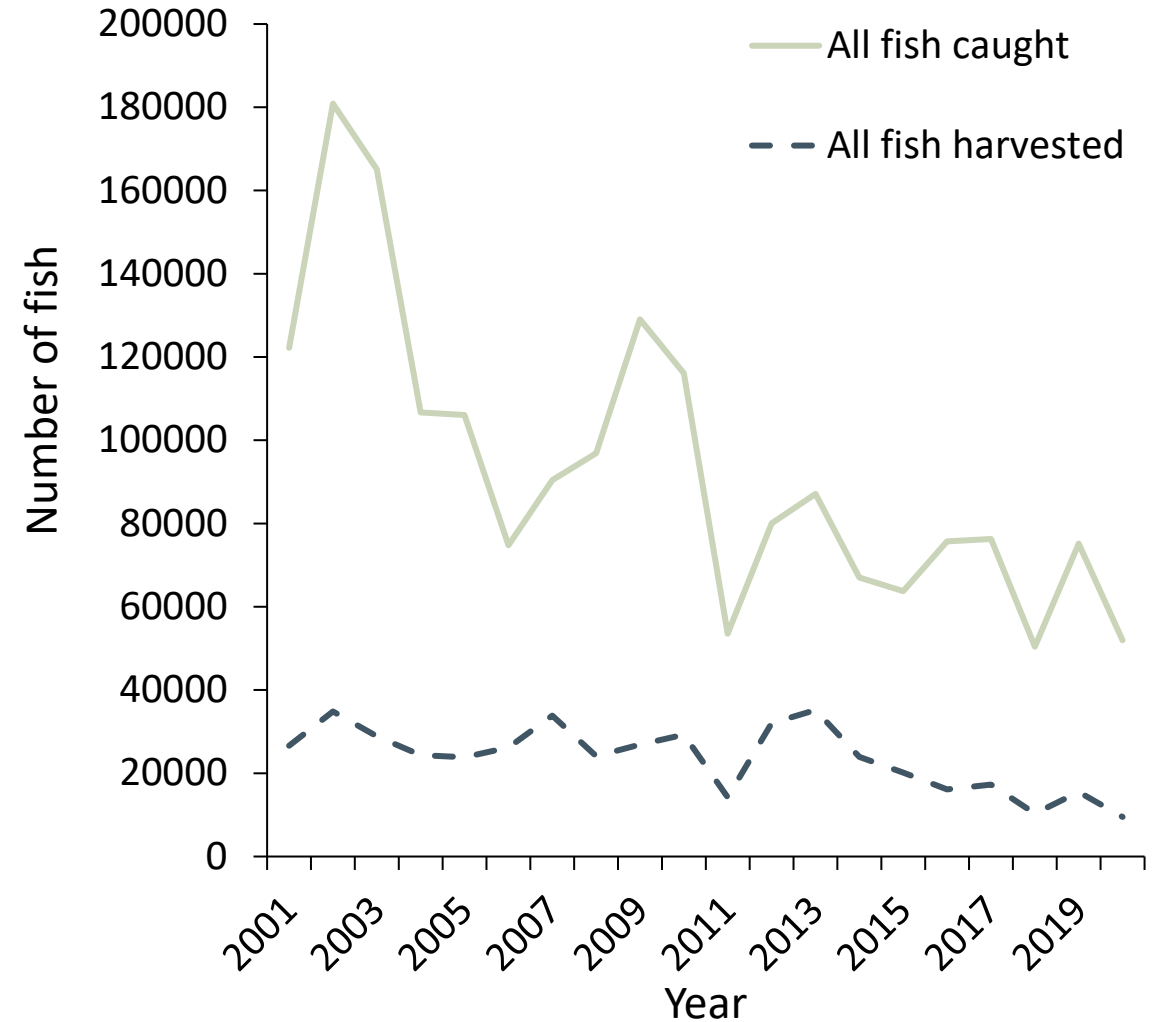
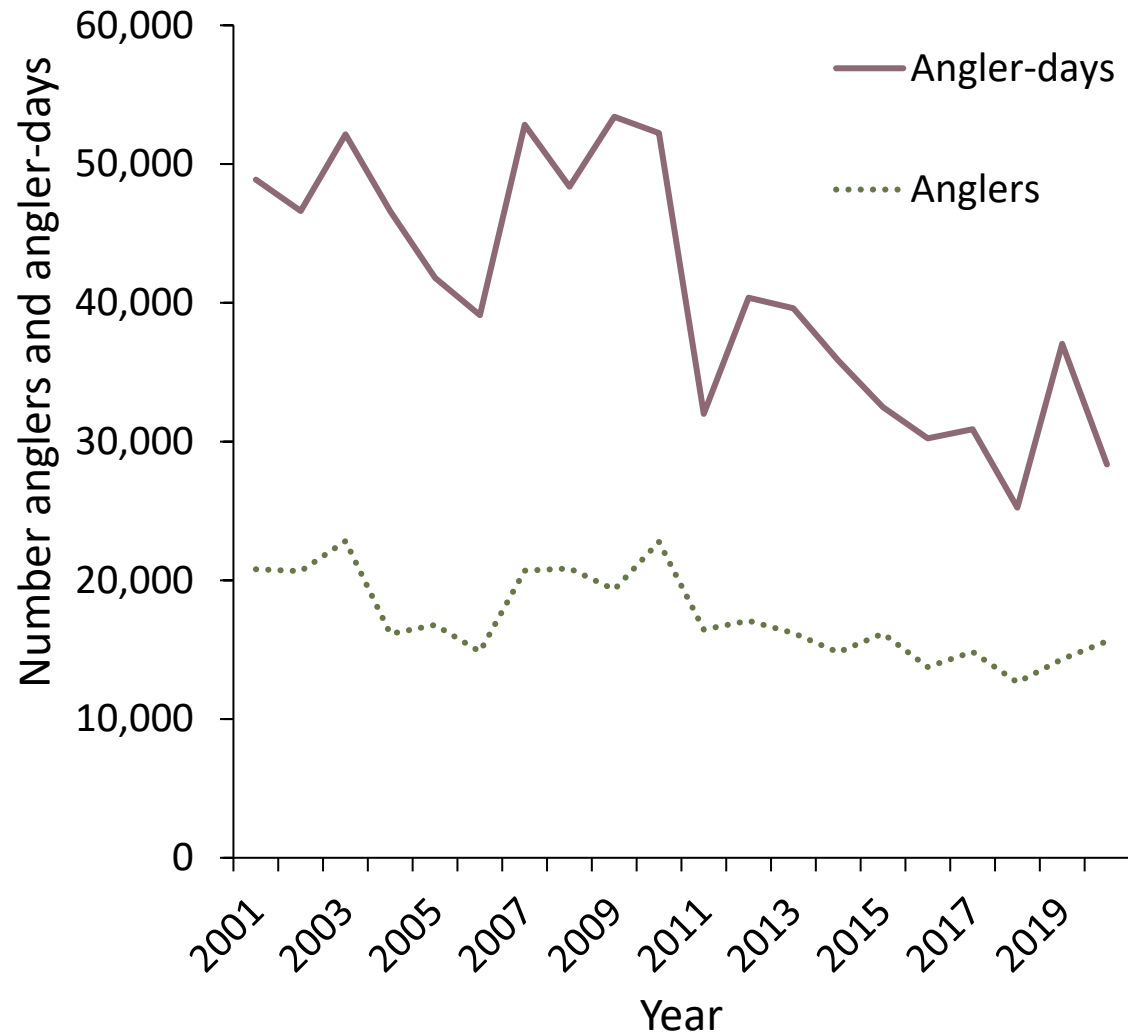


Number of sockeye salmon harvested June 1-6

Proposal 21

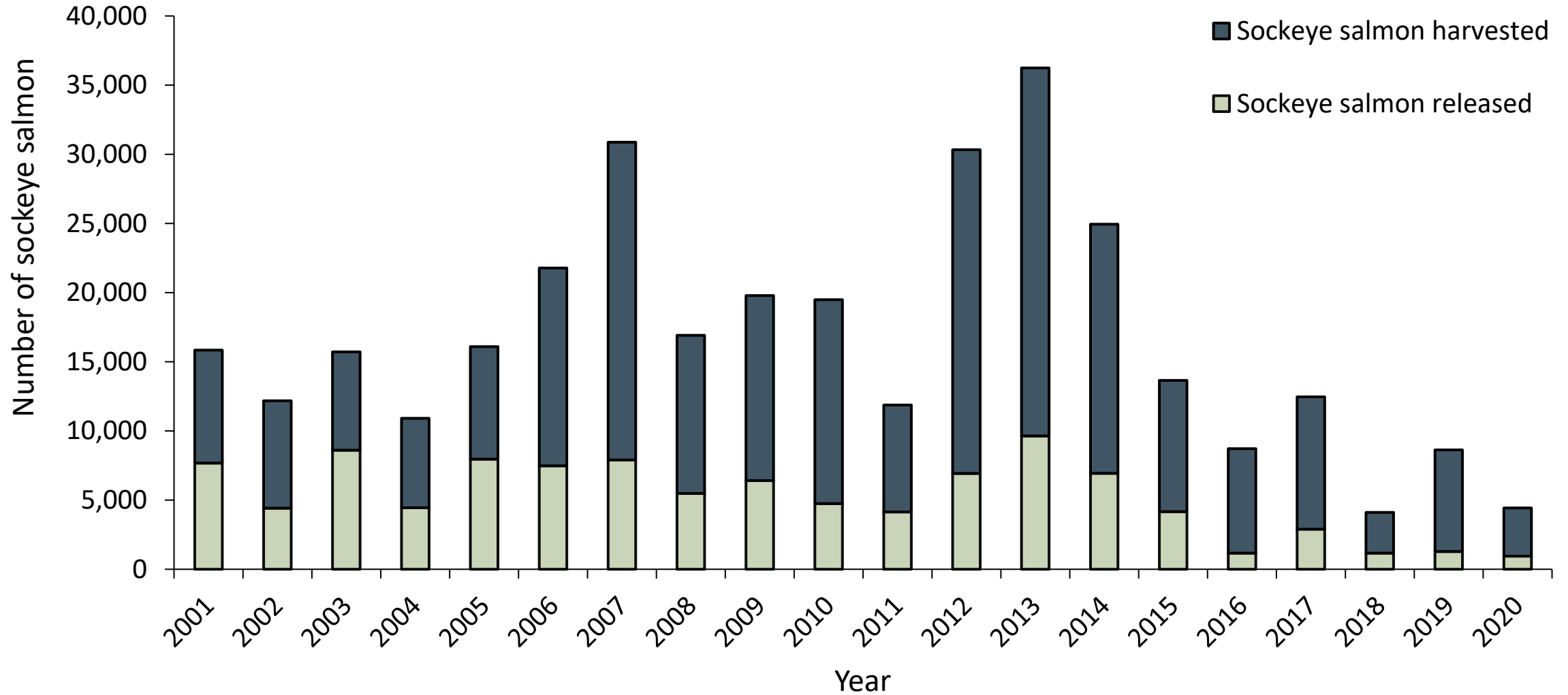


Sport catch, harvest, and effort in the Upper Copper/Upper Susitna Management Area



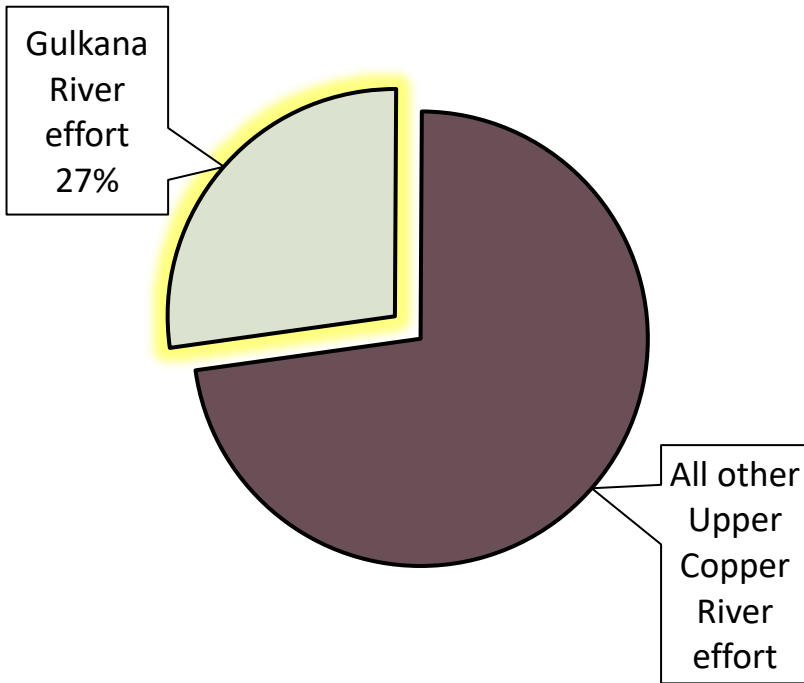
Sockeye salmon sport catch and harvest in the Upper Copper River drainage

Proposal 31



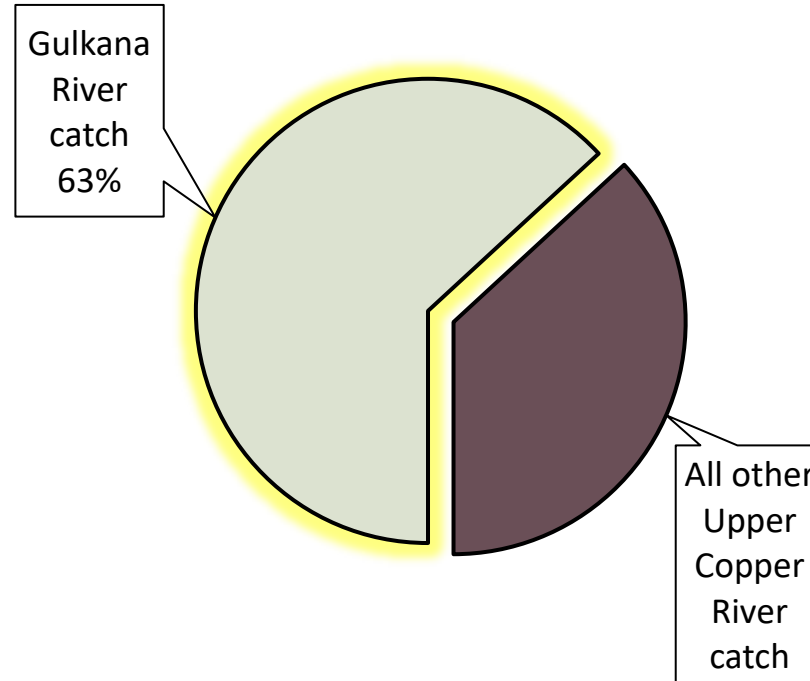
Average Gulkana River sport fishing effort

Proposal 32 & 33



Average wild rainbow trout/steelhead catch from the Gulkana River

Proposal 32 & 33

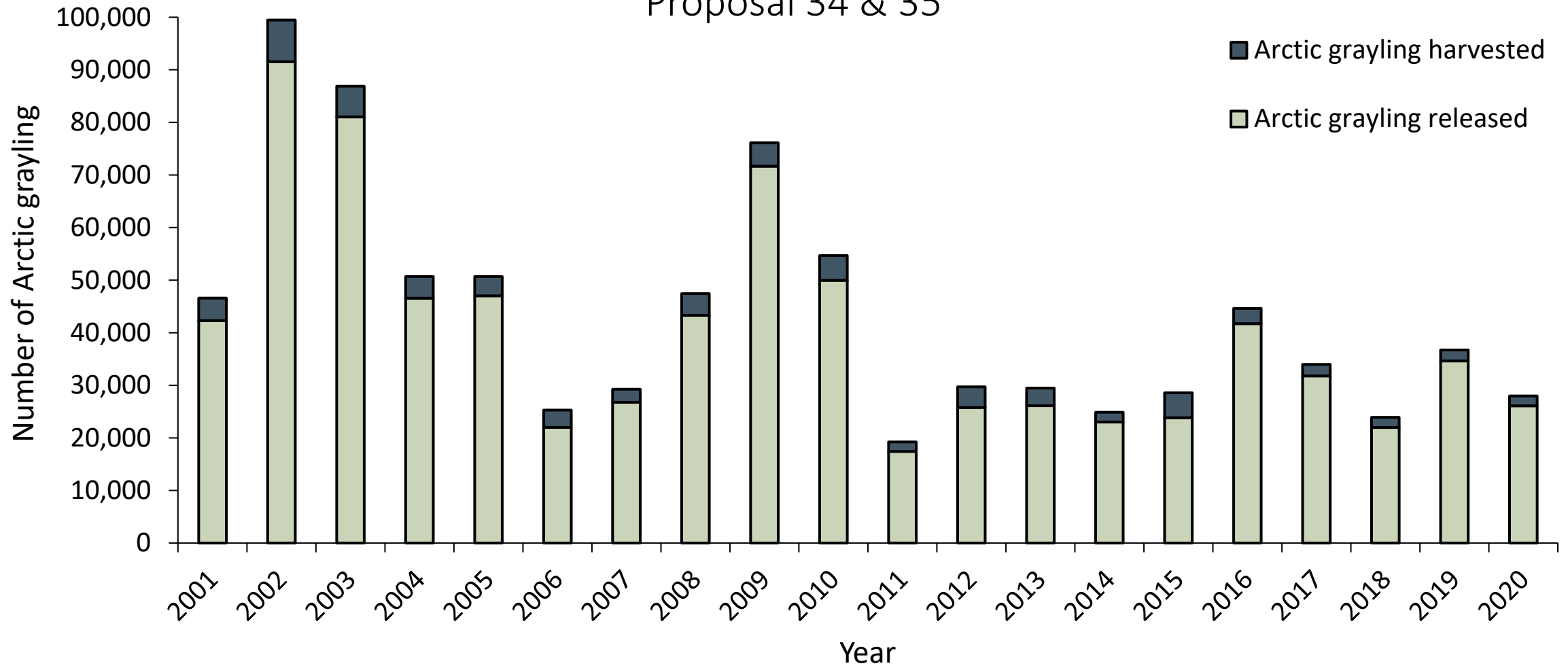


Estimated abundance of rainbow trout in the Gulkana River =

5,238 fish,
11 inches or larger

Arctic grayling sport catch and harvest in the Upper Copper/Upper Susitna management area

Proposal 34 & 35

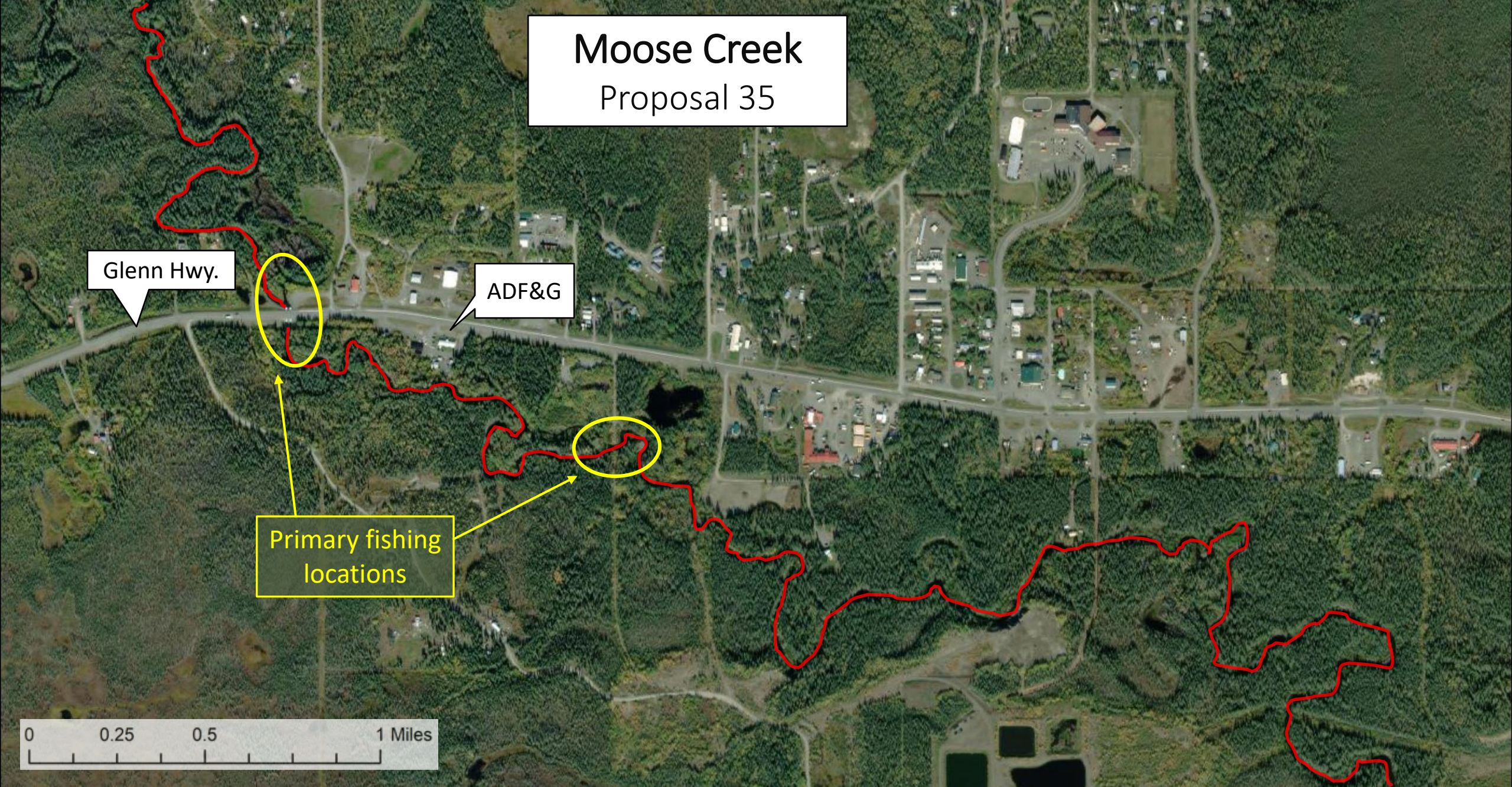
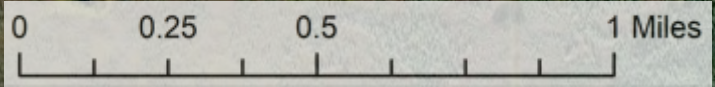


Moose Creek Proposal 35

Glenn Hwy.

ADF&G

Primary fishing
locations



Crosswind Lake Proposal 36



