

South Alaska Peninsula  
Post-June Salmon Fishery  
by  
Cassandra Whiteside



Report to the Alaska Board of Fisheries  
February 2019

Written Report: Supplemental Materials

Staff Comments: RC 2

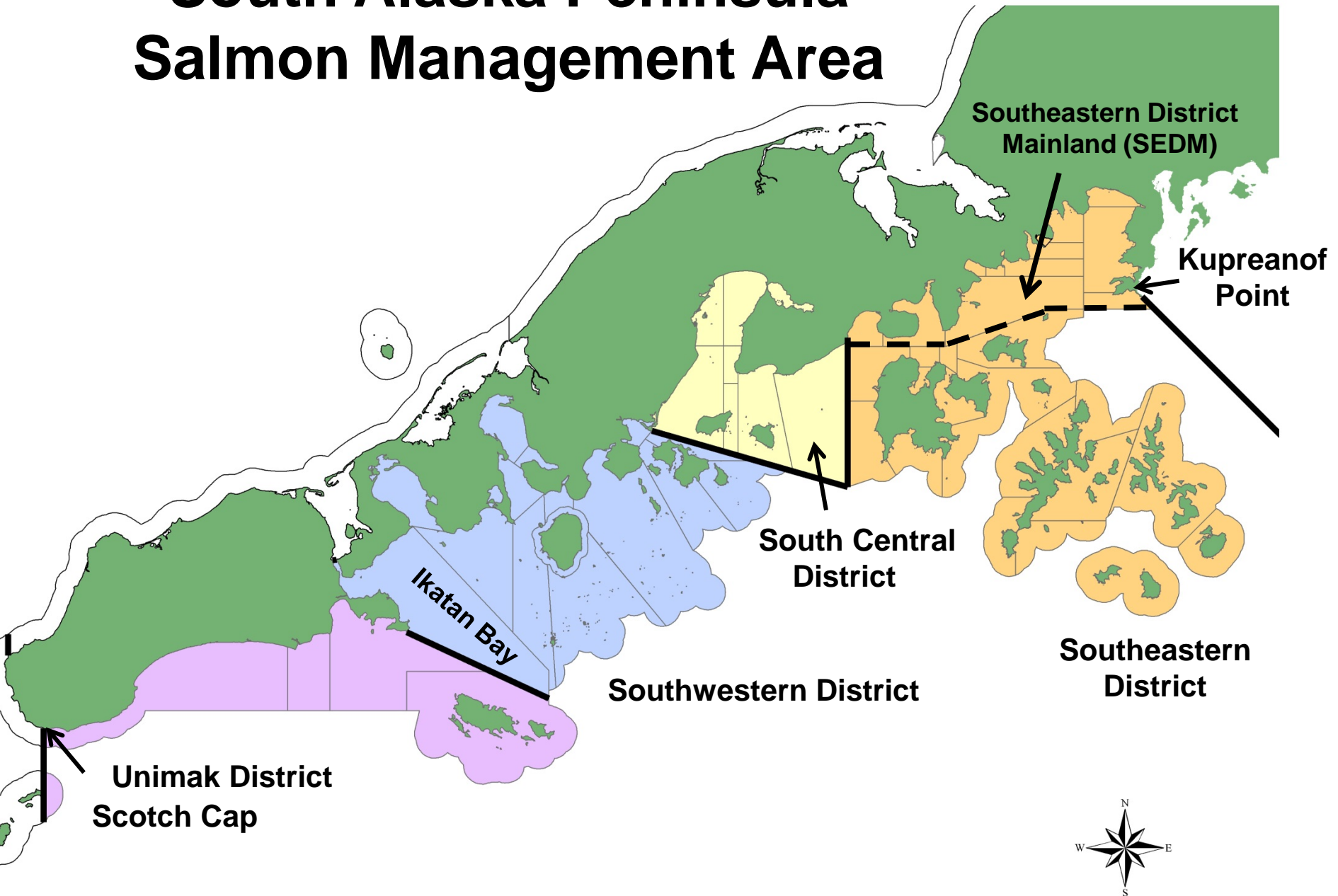
Oral Report: RC 3; Tab 3

# Post-June Salmon Fishery

## Topics to be covered:

- Fishery location
- Economic importance
- History of fishery
- Current regulations
- 2016–2018 season summaries
- Overview of post-June proposals and issues

# South Alaska Peninsula Salmon Management Area



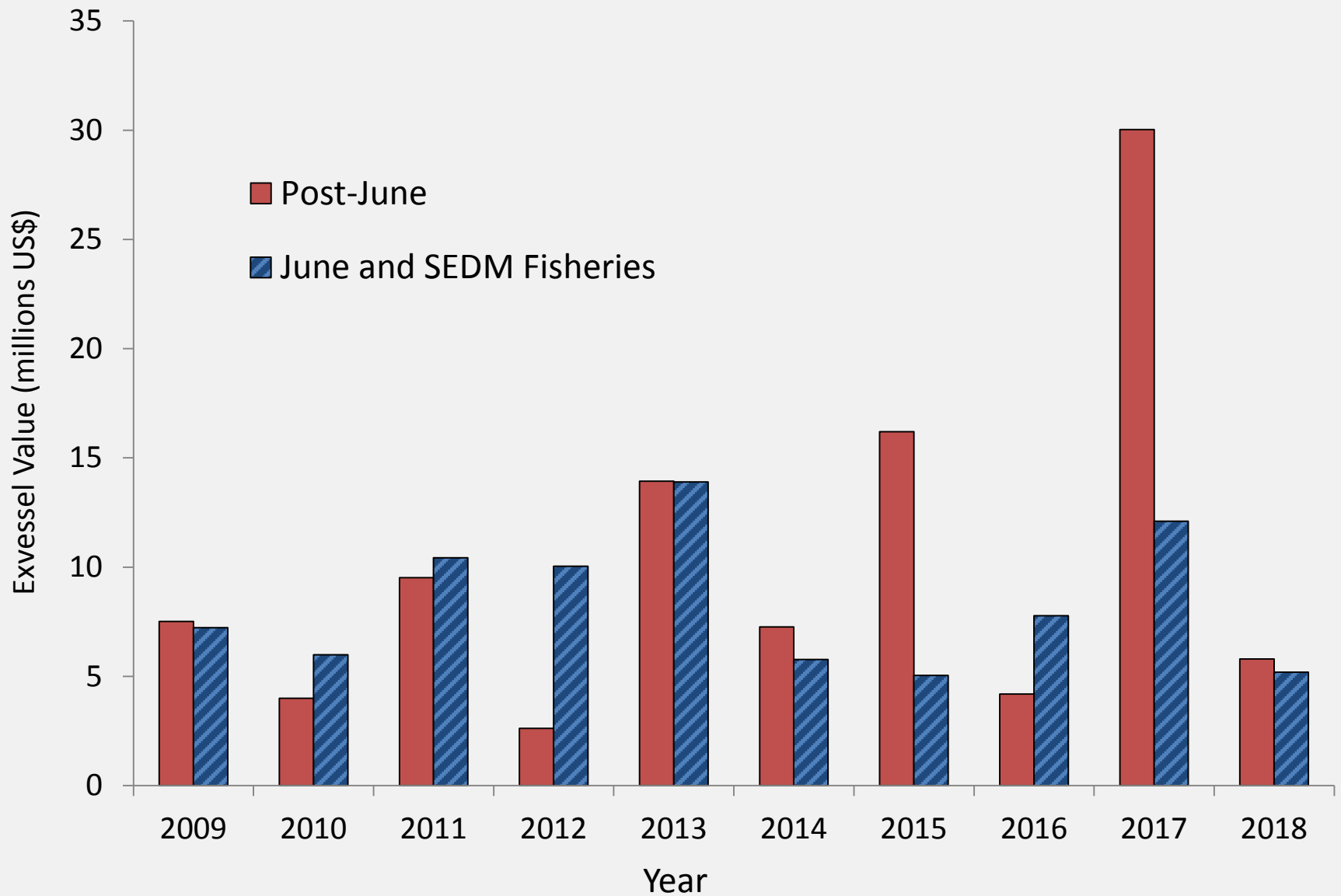
# Post-June Fishery

## Economic Importance

The post-June Fishery 2009–2018 averages

- 55% of exvessel value of South Alaska Peninsula Fisheries
- Average exvessel value for the post-June Fishery \$10,114,662

# South Alaska Peninsula Exvessel Value by Fishery 2009–2018



# Historical Perspective: Regulatory History

Terminal Harvest: local sockeye, coho, pink, and chum salmon

Non-Terminal Harvest: traveling fish of all Pacific salmon species

## Fishing schedule

- Before 1974: open 5 days per week
- Since 1974: varying schedule dependent on terminal area run strength
- 1992–1997: no fishing outside terminal harvest areas from July 6–July 19
- 1998: fishing opportunities outside terminal harvest areas were increased
- 2013: current fishing schedule for July was adopted

## Gear specifications

- Increased set gillnet lead length
- Reduced minimum mesh size

# Post-June Fishery

## Historical Perspective 2009–2018 Average Harvest

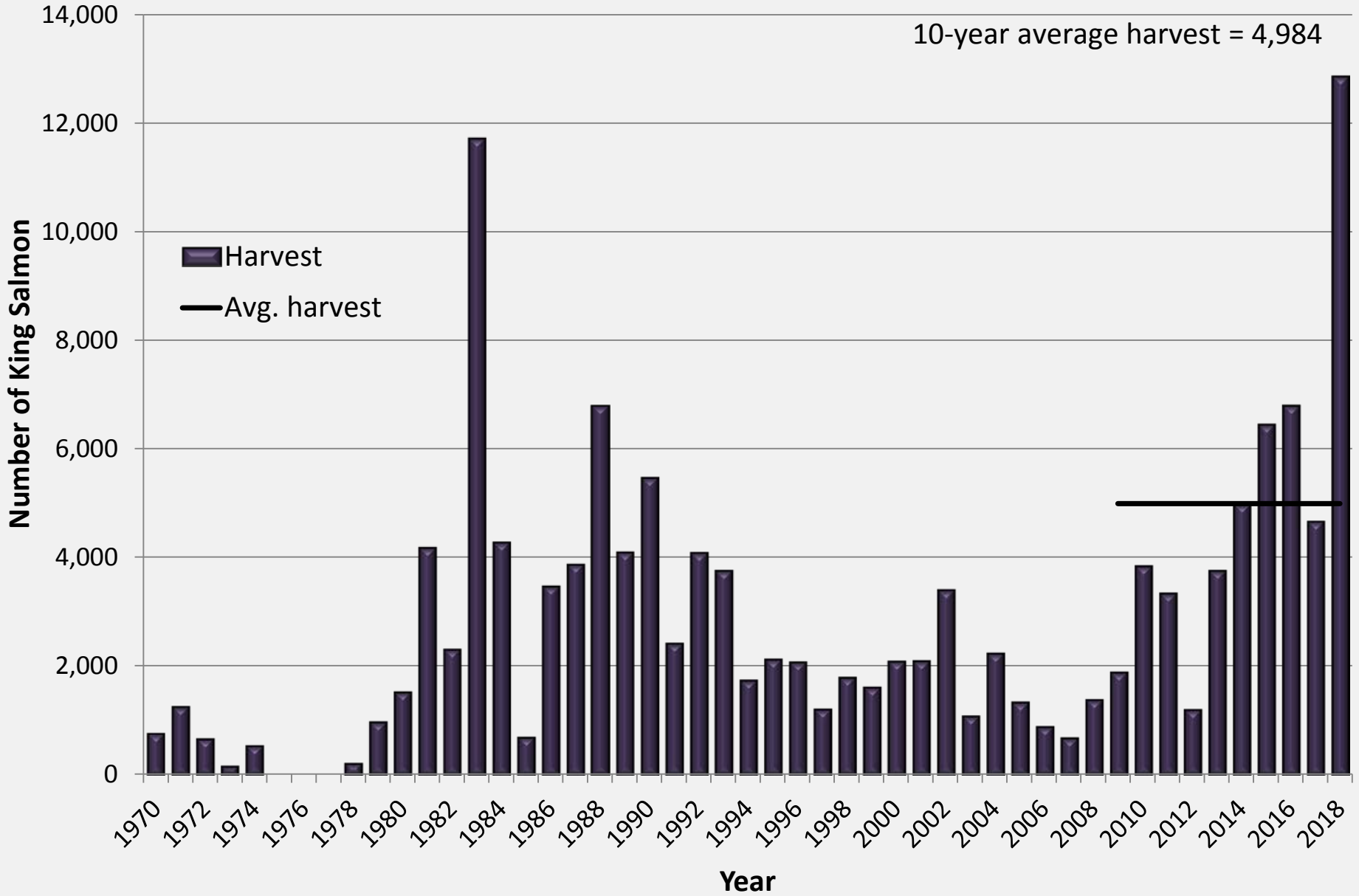
### Number of Fish

	King	Sockeye	Coho	Pink	Chum	Total
Odd-years	4,027	839,931	251,809	10,621,627	753,700	12,471,094
Even-years	5,941	524,952	196,567	394,039	270,076	1,391,575

### Percent of Total Catch

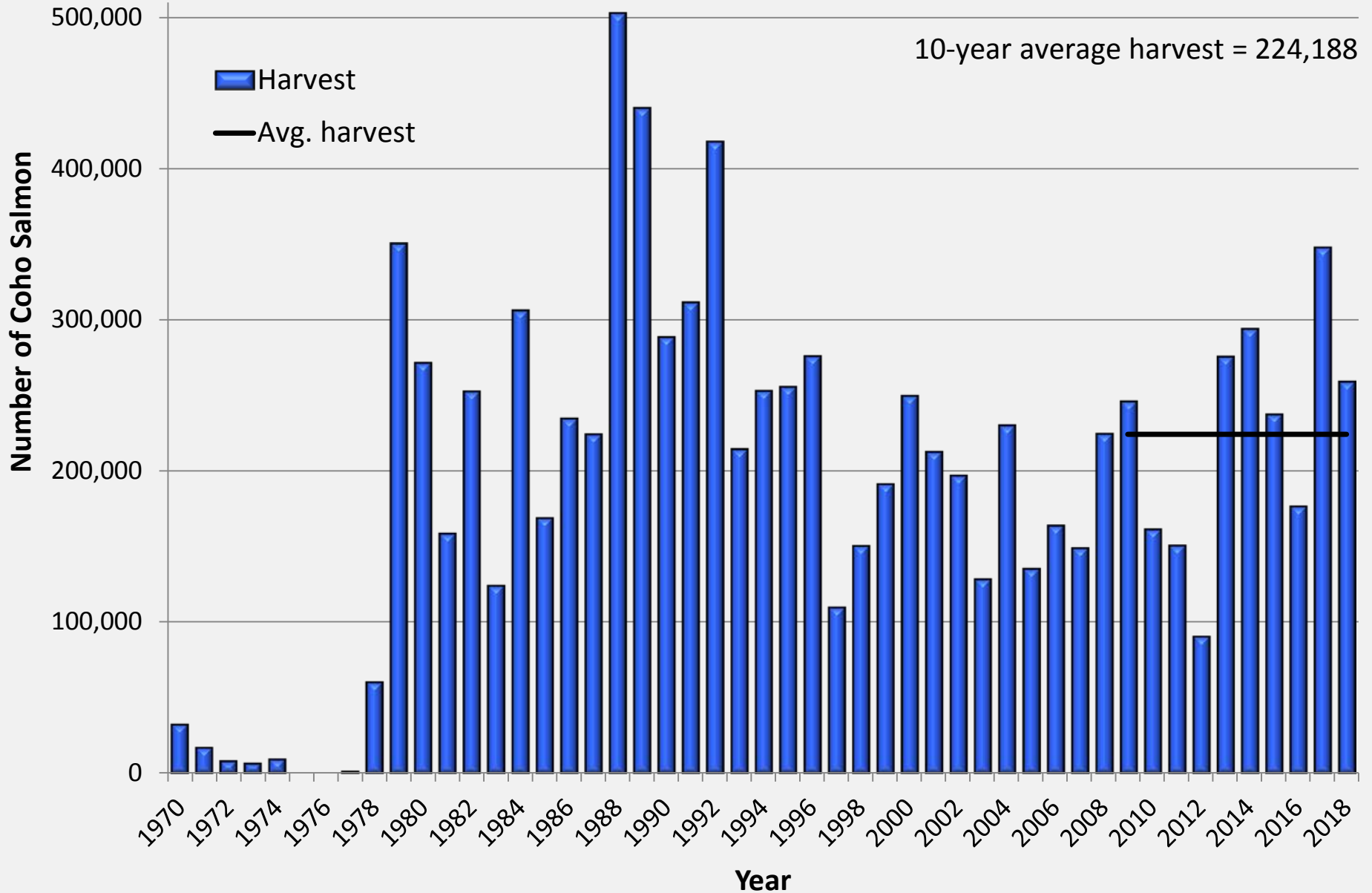
	King	Sockeye	Coho	Pink	Chum
Odd-years	< 1%	7%	2%	85%	6%
Even-years	< 1%	38%	14%	28%	19%

# Post-June King Salmon Harvest 1970–2018

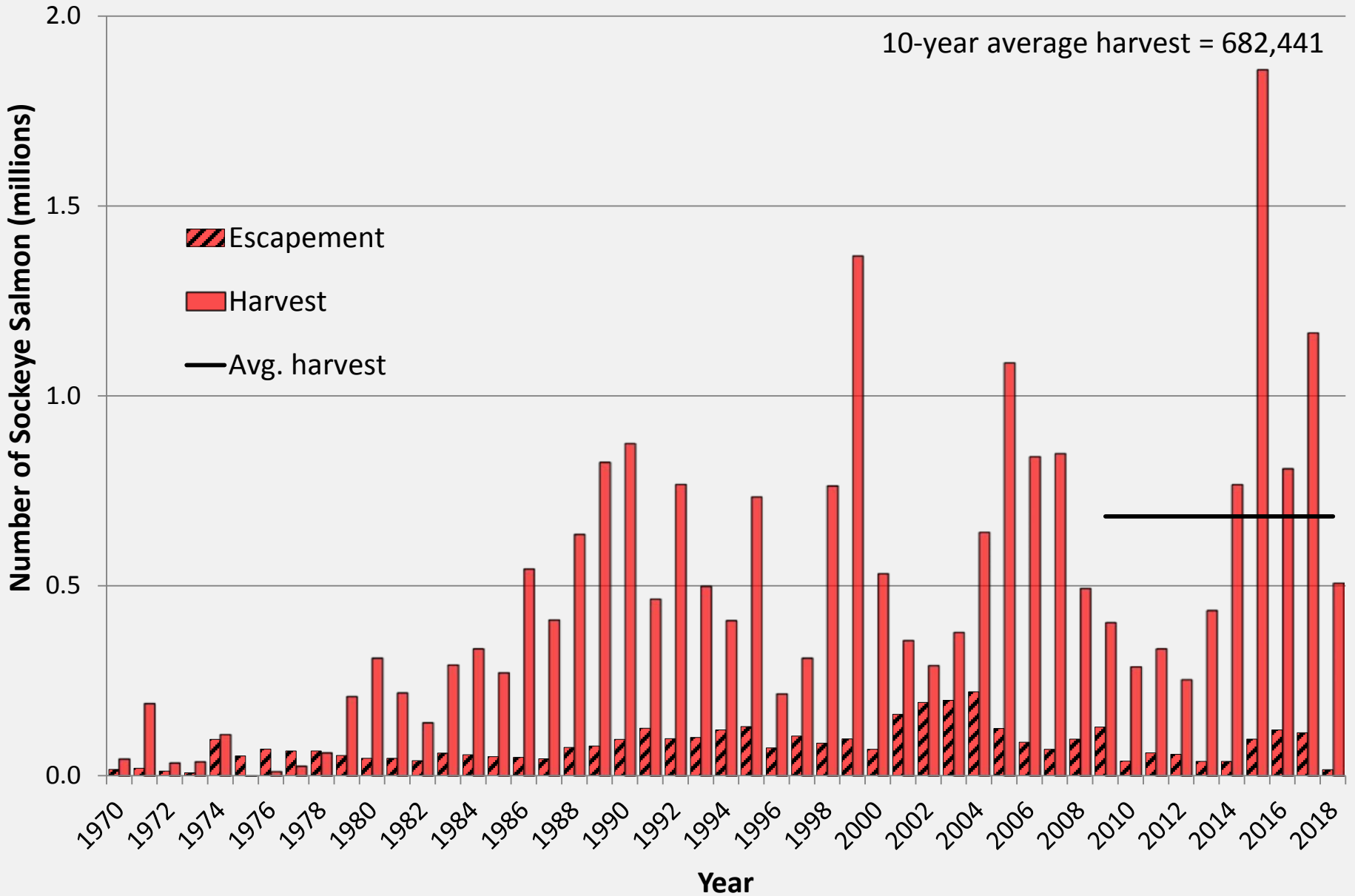




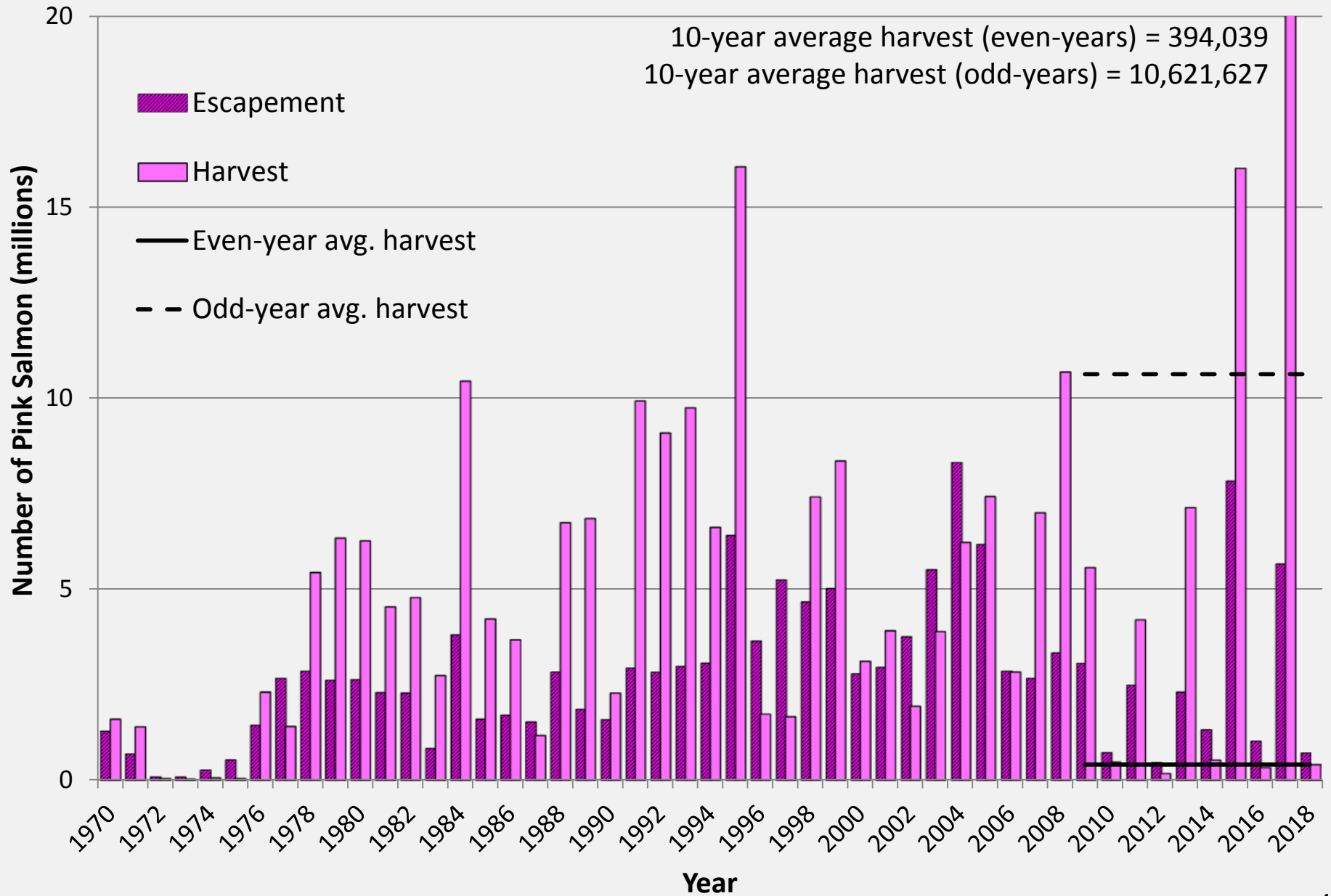
# Post-June Coho Salmon Harvest 1970–2018



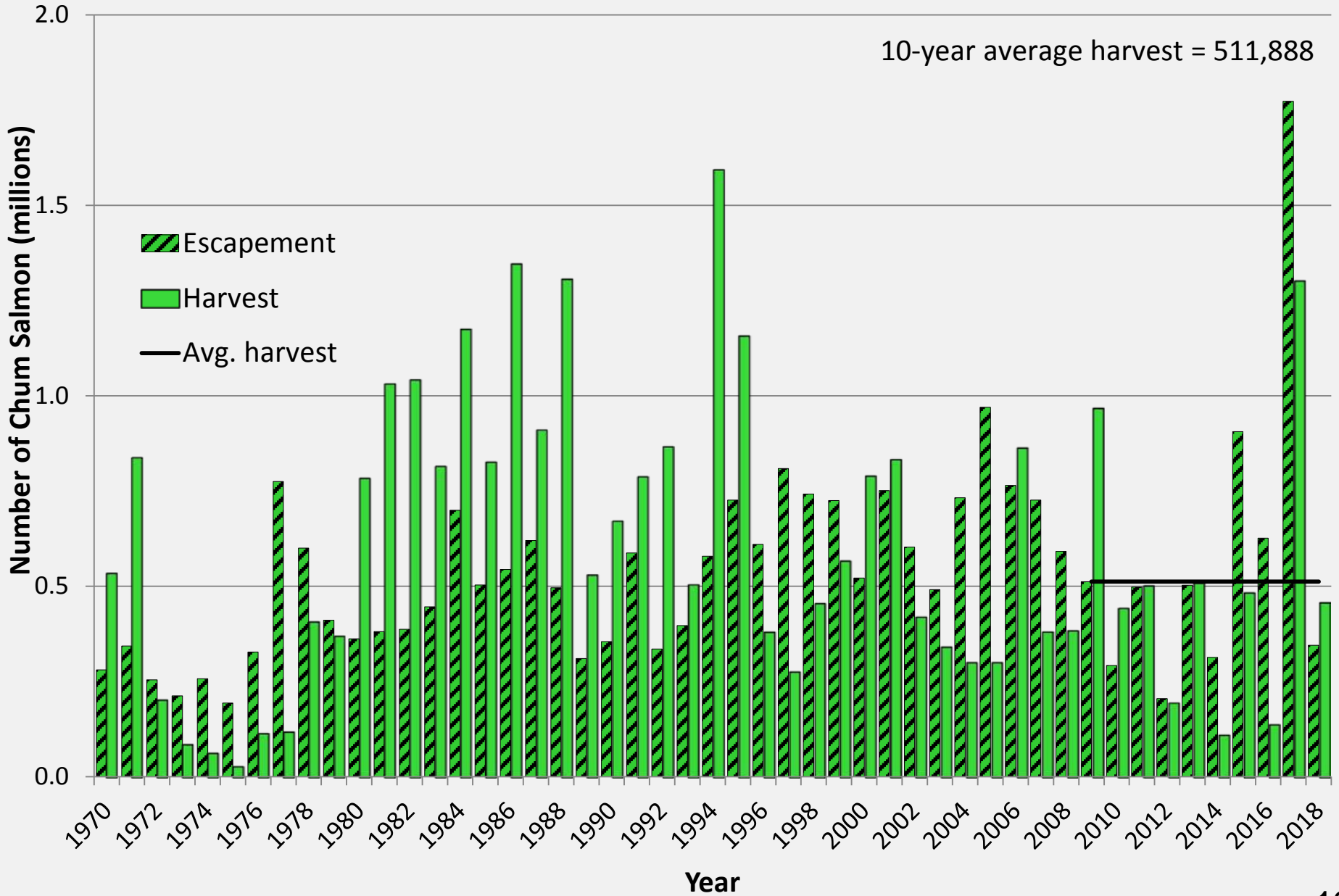
# Post-June Sockeye Salmon Escapement and Harvest 1970–2018



# Post-June Pink Salmon Escapement and Harvest 1970–2018



# Post-June Chum Salmon Escapement and Harvest 1970–2018



# Current Regulations

## Fishing periods July 6–July 31

- Fishing periods begin at 6:00 a.m.
- The first period is 33 hours in length, followed by a 63-hour closure
- Remaining periods are 36 hours in length, followed by 60-hour closures

## Commercial salmon fishing periods established by emergency order from August–October

- August: sockeye, coho, pink, and chum salmon
- September–October: coho salmon
  - late pink and chum salmon stocks

# The Shumagin Islands Immature Salmon Test Fishery

- Test fishing prior to the start of the post-June Fishery
- Immature salmon are incidentally harvested, most often by the purse seine fleet



# Immature Salmon Test Fishery



# The Immature Salmon Test Fishery

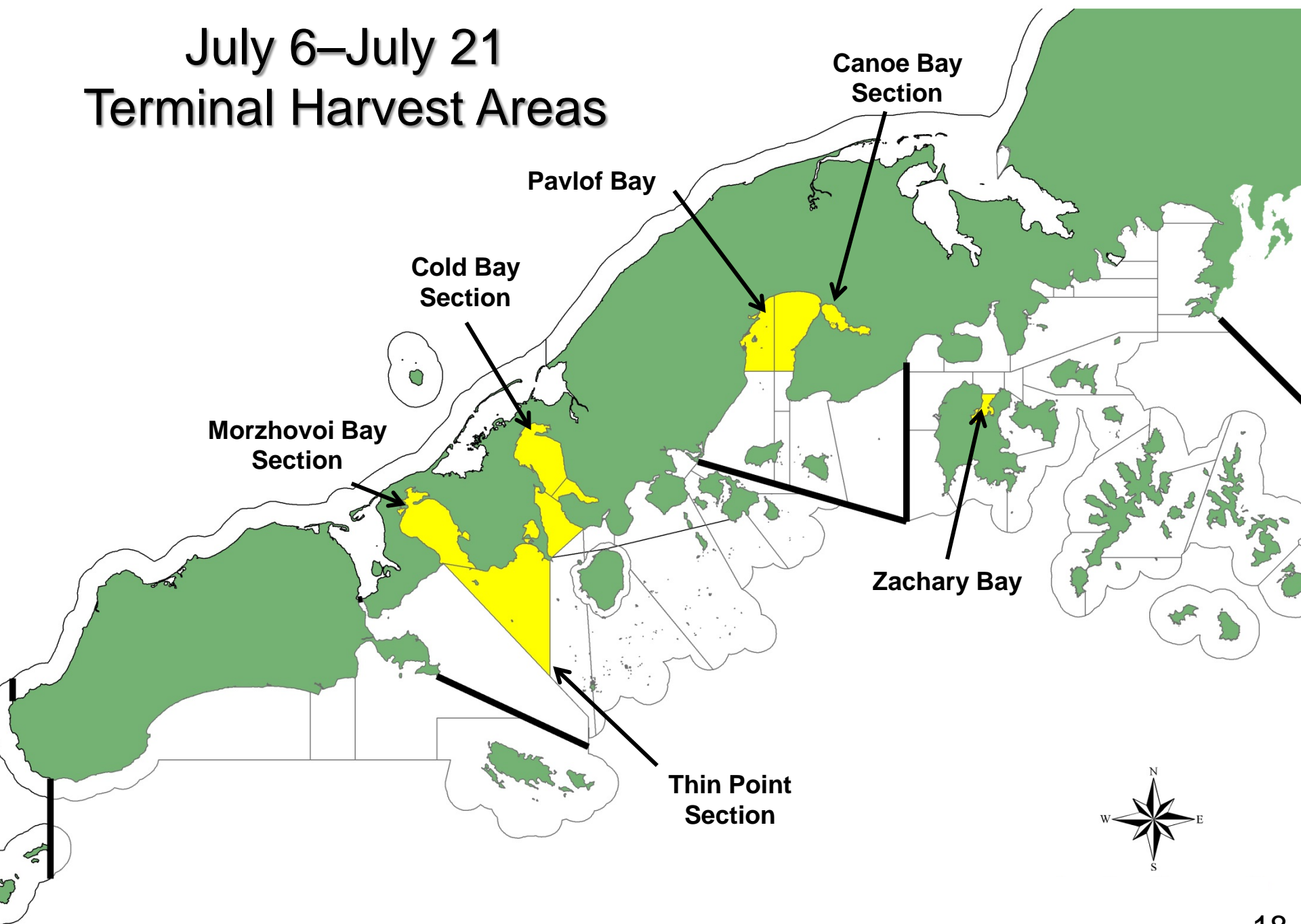
- “Immature salmon, per set” is defined as the number of immature king, sockeye, coho, and chum salmon gilled in the seine web (5 AAC 09.366(i))
- > 100 immature salmon gilled
  - Seine fishery closed
  - Set gillnet gear permitted
    - Including between Popof Head and Dark Cliffs
- < 100 immature salmon gilled
  - Fishery may open on July 6 to all gear types
  - Area between Popof Head and Dark Cliffs
    - Seine gear only



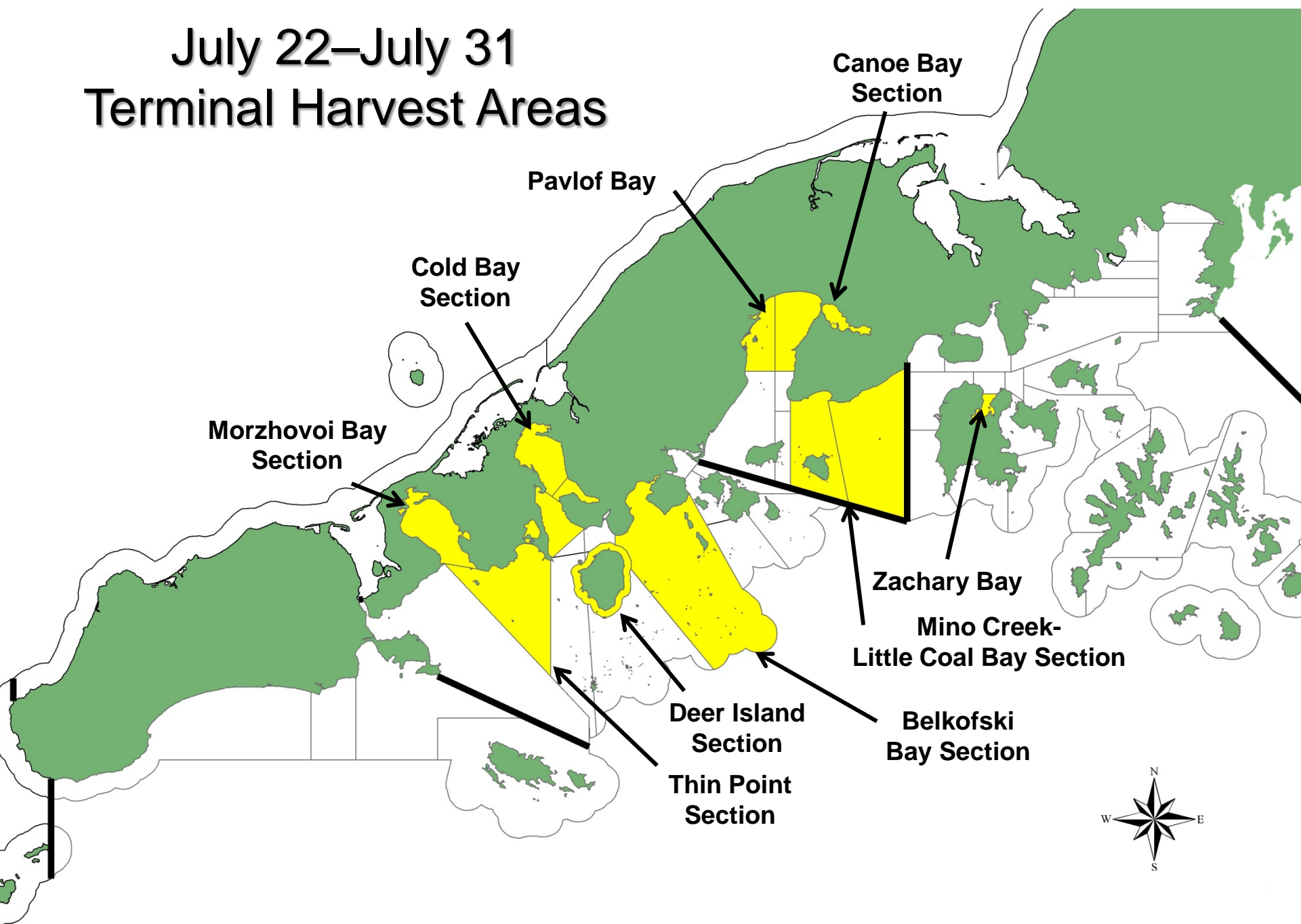
# Post-June Salmon Fishery Schedule for July 2018

Sunday	Monday	Tuesday	Wednesday	Thursday	Friday	Saturday
1	2	3	4	5	6	7
					6:00 AM 33 Hours 3:00 PM	
8	9	10	11	12	13	14
		6:00 AM 36 Hours 6:00 PM				6:00 AM
15	16	17	18	19	20	21
36 Hours 6:00 PM			6:00 AM 36 Hours 6:00 PM			
22	23	24	25	26	27	28
6:00 AM 36 Hours 6:00 PM				6:00 AM 36 Hours 6:00 PM		
29	30	31				
	6:00 AM 36 Hours 6:00 PM					

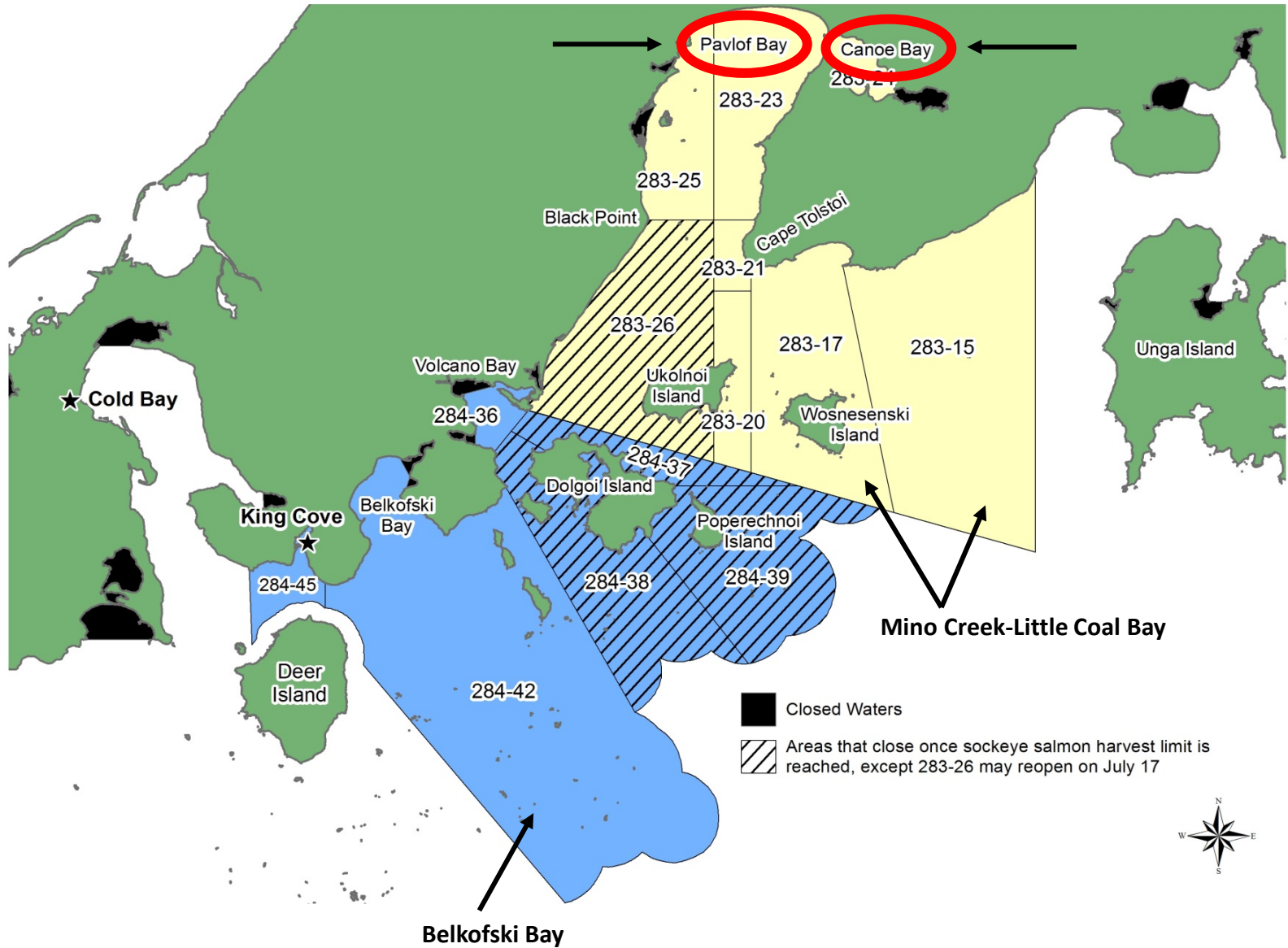
# July 6–July 21 Terminal Harvest Areas



# July 22–July 31 Terminal Harvest Areas



# The “Dolgoi Island area” Terminal Harvest Areas



# Post-June Salmon Fishery 2016–2018 Season Summaries

Year	Number of Salmon Harvested				
	King	Sockeye	Coho	Pink	Chum
2016	6,804	808,806	176,838	339,864	139,519
2017	4,672	1,166,129	348,154	20,099,320	1,302,507
2018	12,867	507,454	259,341	416,590	458,947
Average	8,114	827,463	261,444	6,951,925	633,658

## Average participation by gear type:

Purse seine = 51 of 121  
 Drift gillnet = 21 of 162  
 Set gillnet = 59 of 116

## Average percent of harvest:

Purse seine = 93%  
 Drift gillnet = 1%  
 Set gillnet = 6%

# Post-June Proposals

- Proposal 142:
  - Establish commercial salmon fishing periods by emergency order from July 14 through July 31 in the South Alaska Peninsula
- Proposal 143:
  - Repeal the immature salmon test fishery in the Shumagin Islands Section

# Post-June Proposals

## Gear Specifications and Operations

- Proposal 155:
  - Allow the shoreward end of a set gillnet lead to be anchored other than on the beach above low tide
- Proposal 156:
  - Repeal minimum mesh size requirement for set gillnets in the South Alaska Peninsula Management Area
- Proposal 157:
  - Allow two legal limits of set gillnet gear to be transported or operated by a single vessel as long as both limited entry permit holders are onboard the vessel



Cold Bay