

# **Southeast Alaska King, Tanner, and Dungeness Crab Fisheries**

**Alaska Board of Fisheries**

**January 11–14, 2018**

**Sitka**

**Report by Karla Bush, Joe Stratman,  
and Patrick Fowler**

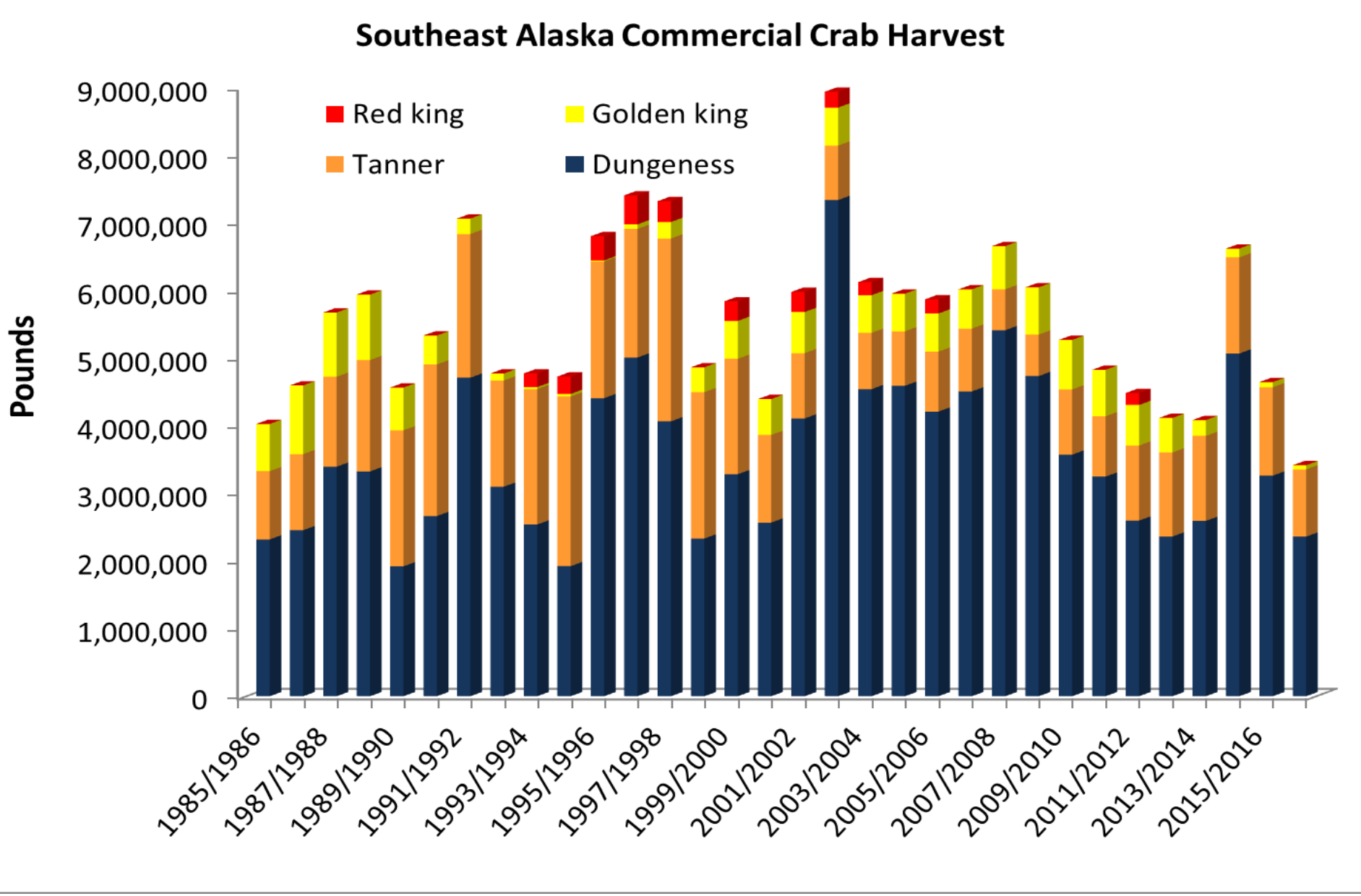


# Southeast Commercial Crab Fisheries

## Presentation Outline:

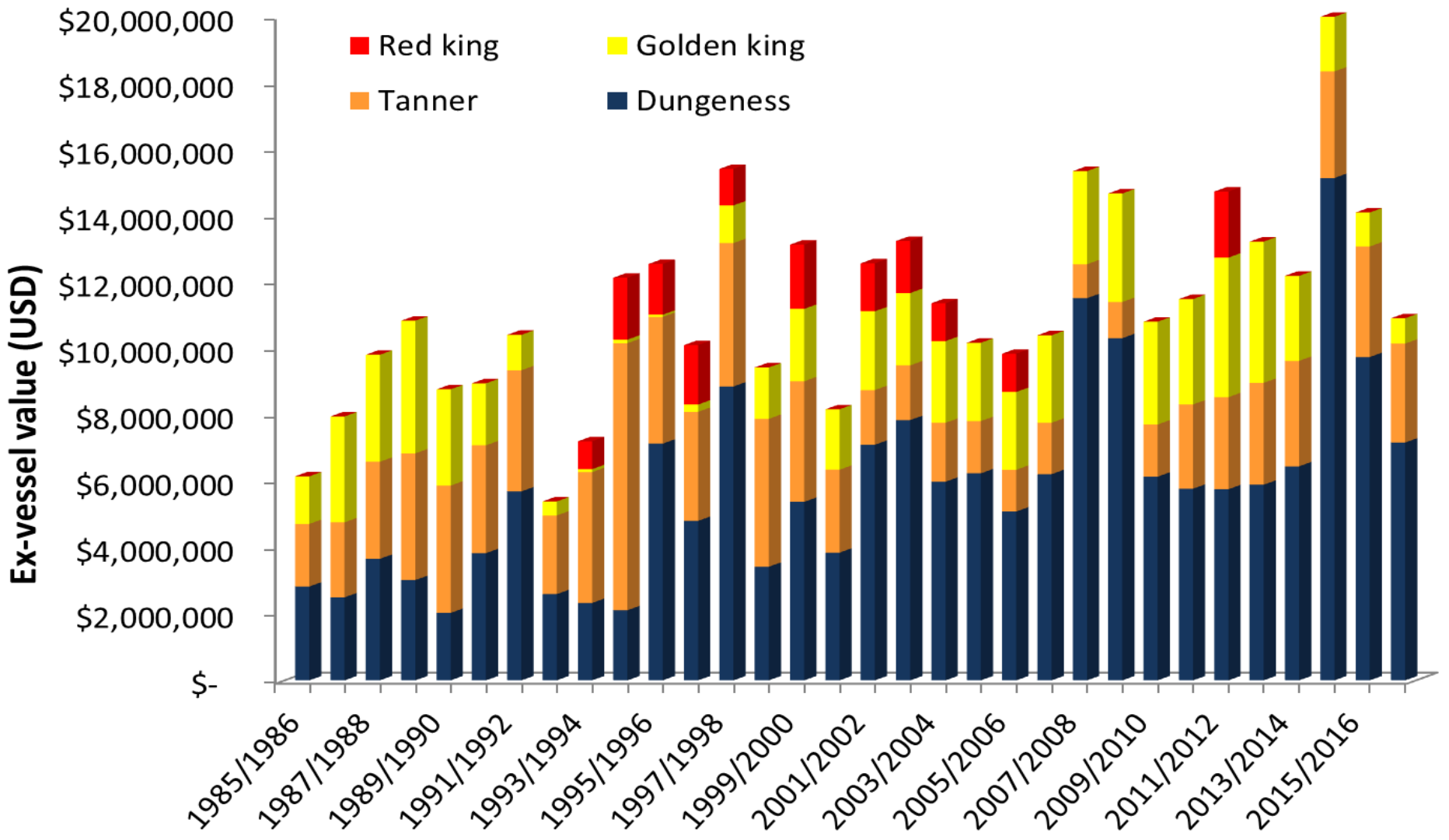
Management Overview  
Dungeness crab Fishery  
Red king crab Fishery  
Golden king crab Fishery  
Tanner crab Fishery

# Southeast Commercial Crab Fisheries - Overview



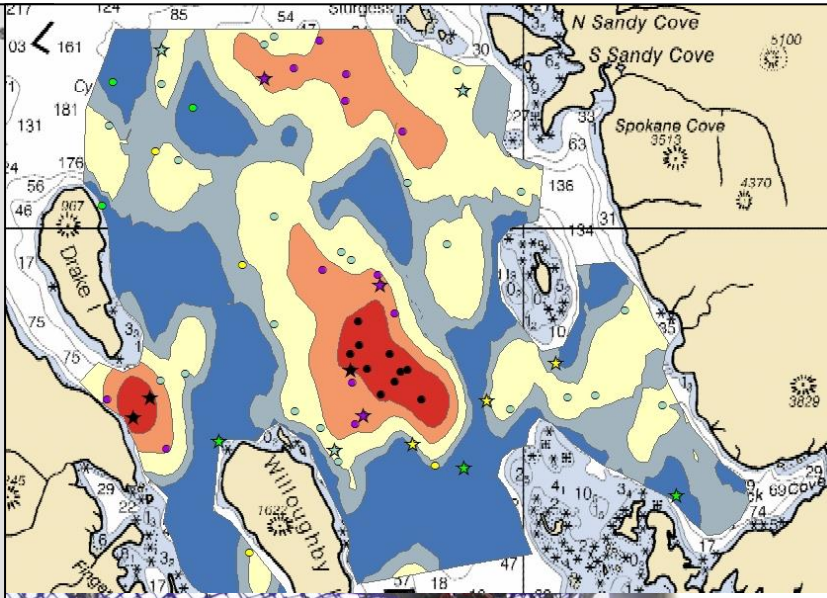
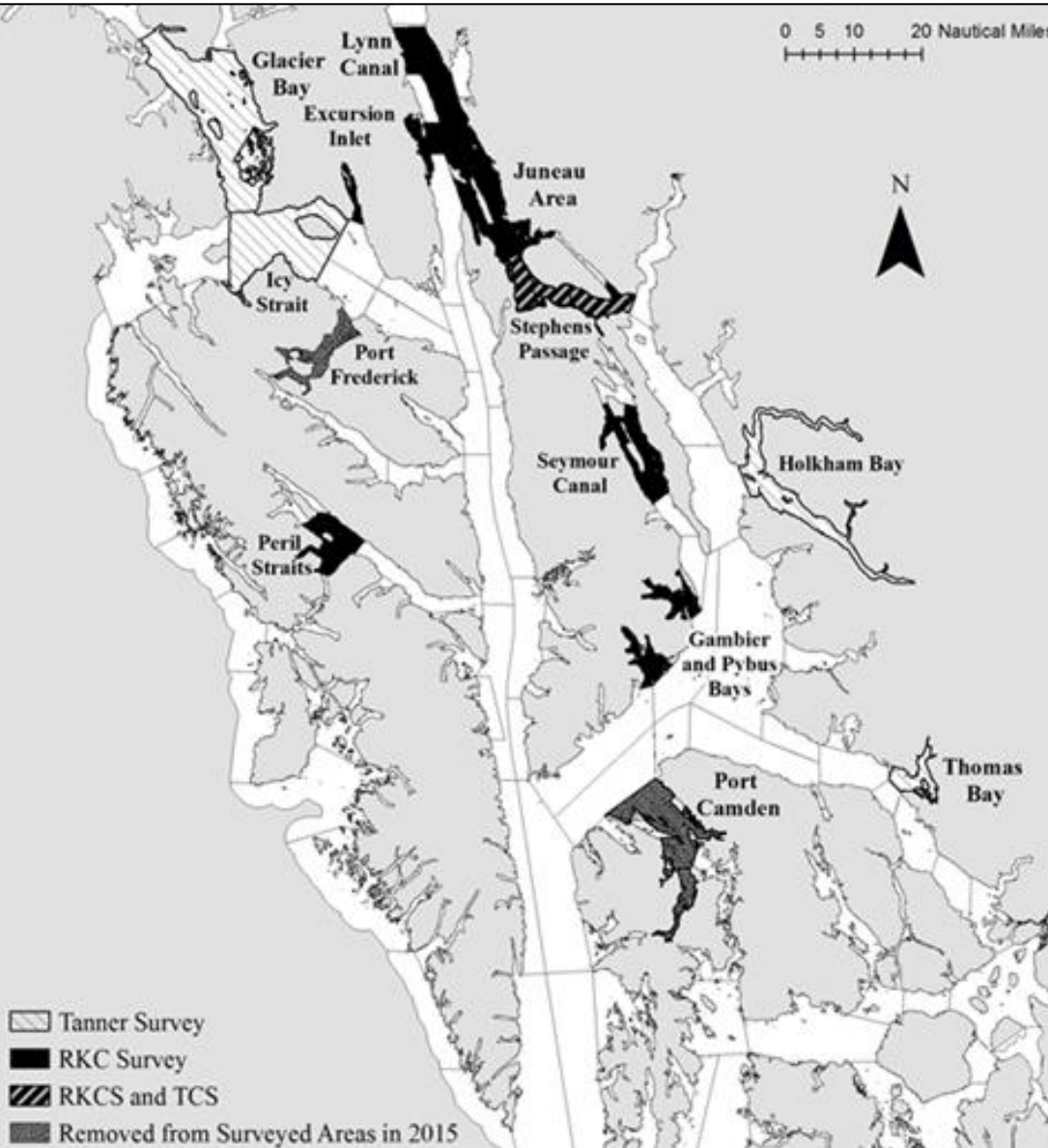
# Southeast Commercial Crab Fisheries - Overview

## Southeast Alaska Commercial Crab Value



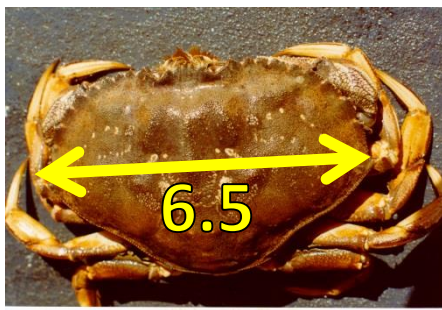
# Southeast Commercial Crab Fisheries - Overview

## Survey/Stock Assessment: Red king and Tanner crab



# Southeast Commercial Crab Fisheries - Overview

- Male only
- Minimum legal size (carapace width) set to allow reproductive activity prior to entering fishery.



- Seasons established to avoid sensitive life history events (molting/mating).

Southeast Alaska Commercial Crab Fishing Seasons

	Jan	Feb	Mar	Apr	May	Jun	Jul	Aug	Sep	Oct	Nov	Dec
Dungeness	Blue	Blue	Blue				Light Blue	Light Blue	Light Blue	Hatched	Hatched	Blue
Tanner		Yellow	Yellow	Yellow	Yellow							
Red king	Red	Red									Red	Red
Golden king*		Green	Green	Green	Green	Green	Green	Green	Green	Green	Green	Green

\* Closes by Emergency Order

# Southeast Commercial Crab Fisheries - Overview

## Limited Entry - King & Tanner

Permit	Number of Permits	Species		
		Tanner	Red/Blue king	Golden king
T19A	24	24		
K19A	7		7	
K29A	6		6	6
K39A	9			9
K49A	16	16	16	
K59A	6	6		6
K69A	30	30	30	30
<b>Maximum permits</b>		<b>76</b>	<b>59</b>	<b>51</b>

## Dungeness

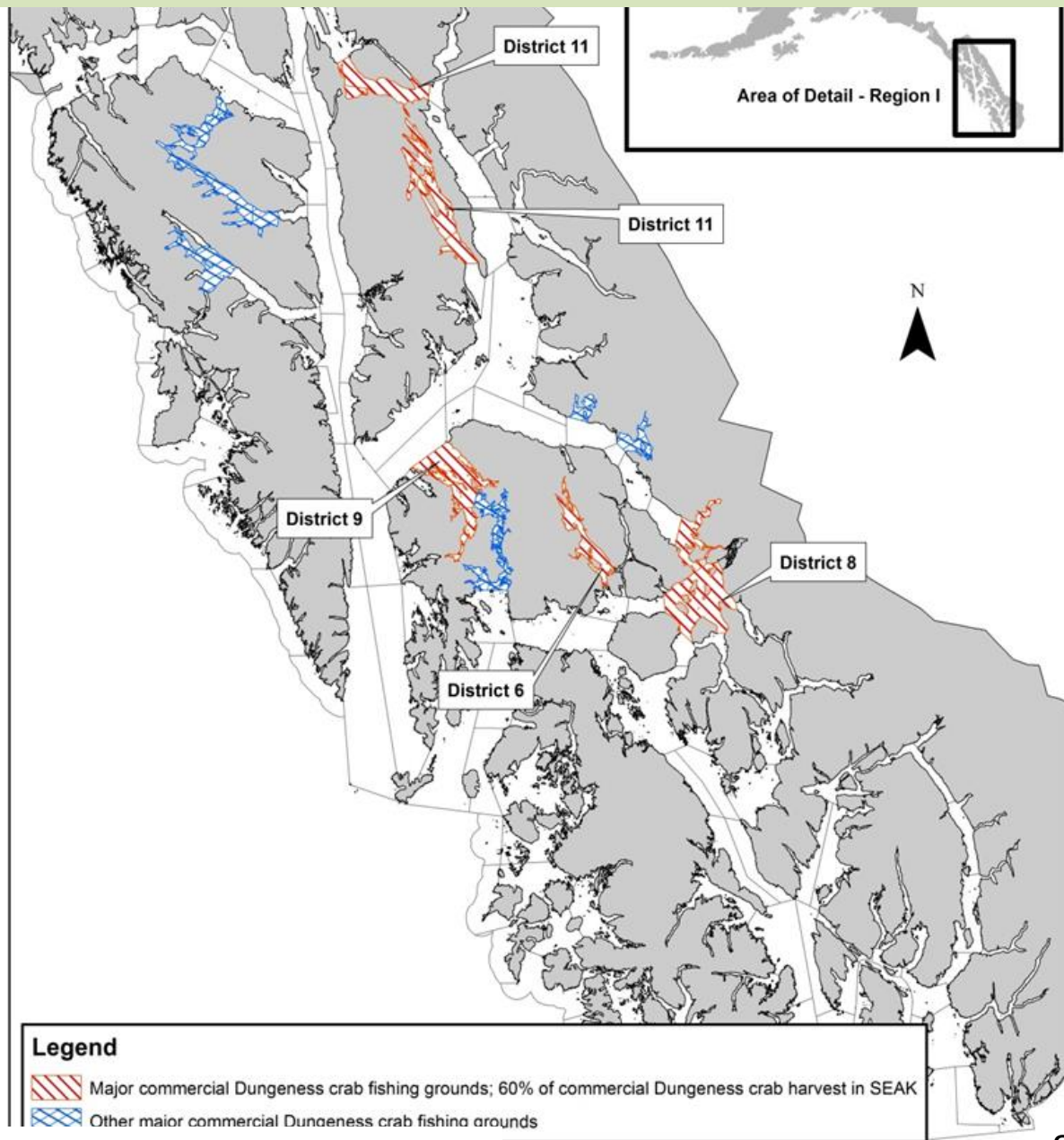
Vessels with more than one permit holder are limited to **300 pots**

Proposal 55 would increase this to **400 pots** per vessel

Permit	Gear type/limit	Number of permits	Maximum pots	
			Status quo	Proposal 54
D9AA	100% max pots (300)	49	14,700	11,760
D9BA	75% max pots (225)	43	9,675	7,740
D9CA	50% max pots (150)	83	12,450	9,960
D9DA	25% max pots (75)	98	7,350	5,880
D10A	Ring net	2		
D11A	Dive	2		
<b>Maximum permits</b>		<b>277</b>	<b>44,175</b>	<b>35,340</b>

# Southeast Alaska Commercial Dungeness Crab

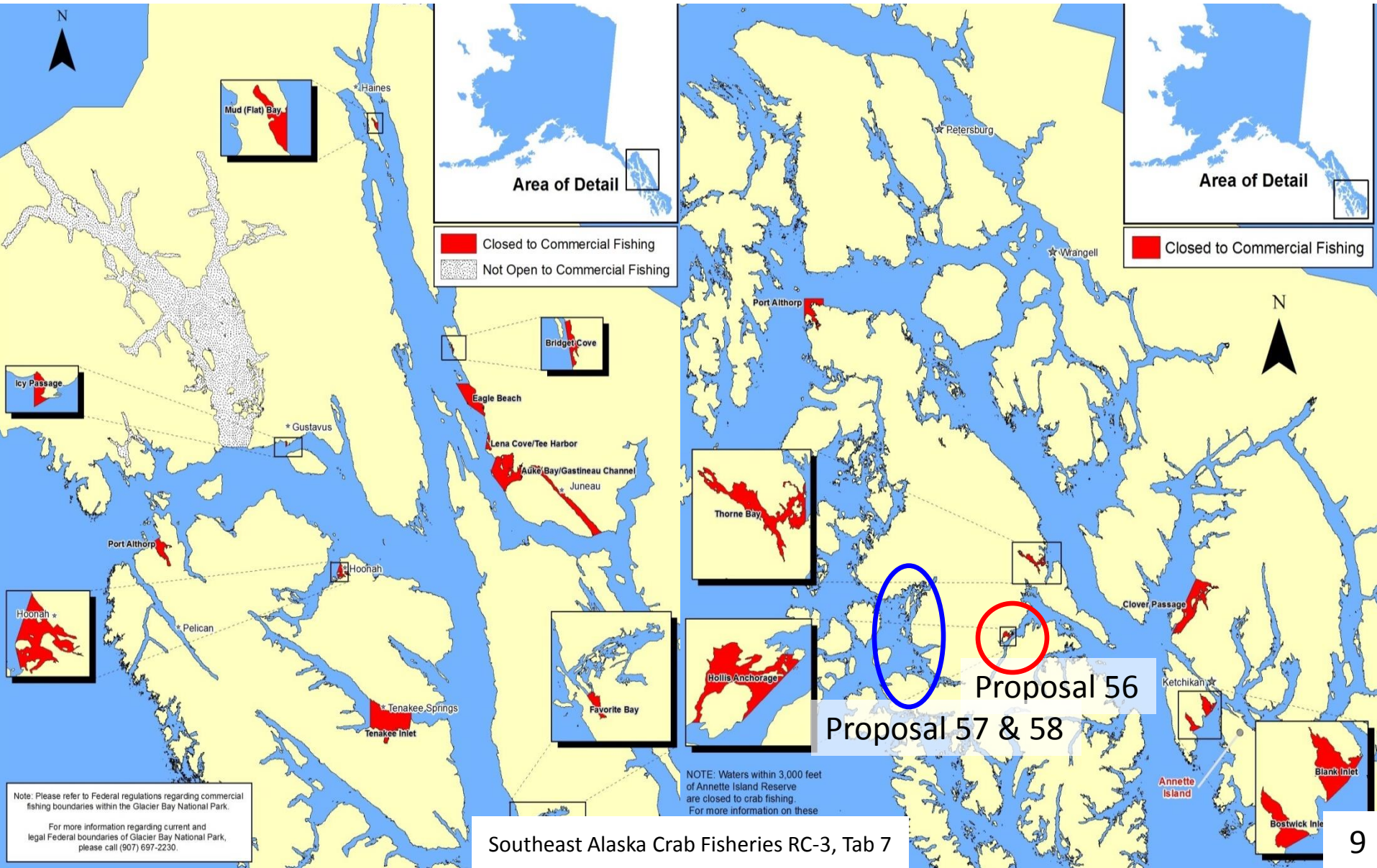
## Major Fishing Areas



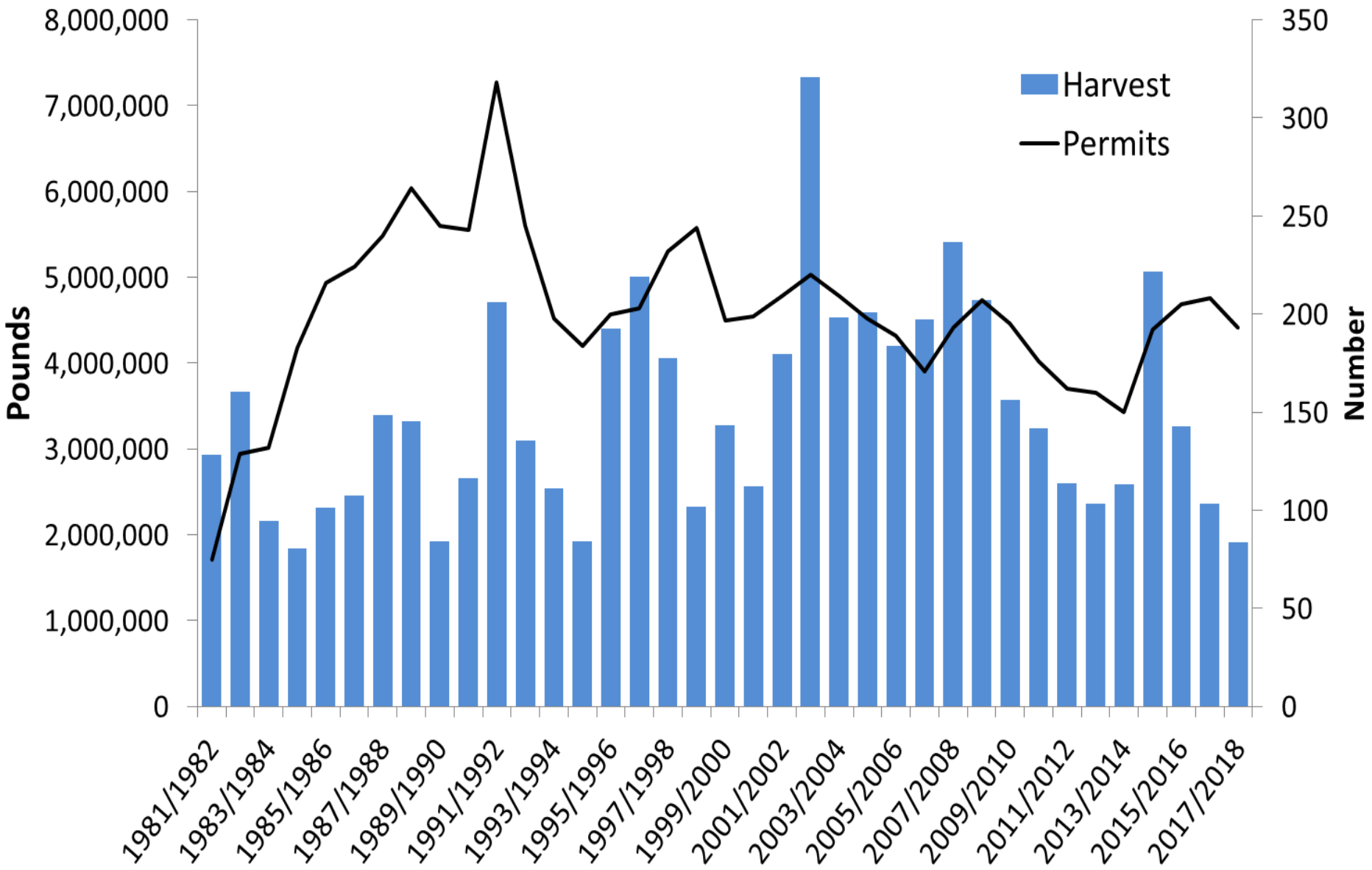


# Southeast Alaska Commercial Dungeness Crab

## Closed Waters



# Southeast Alaska Commercial Dungeness Crab

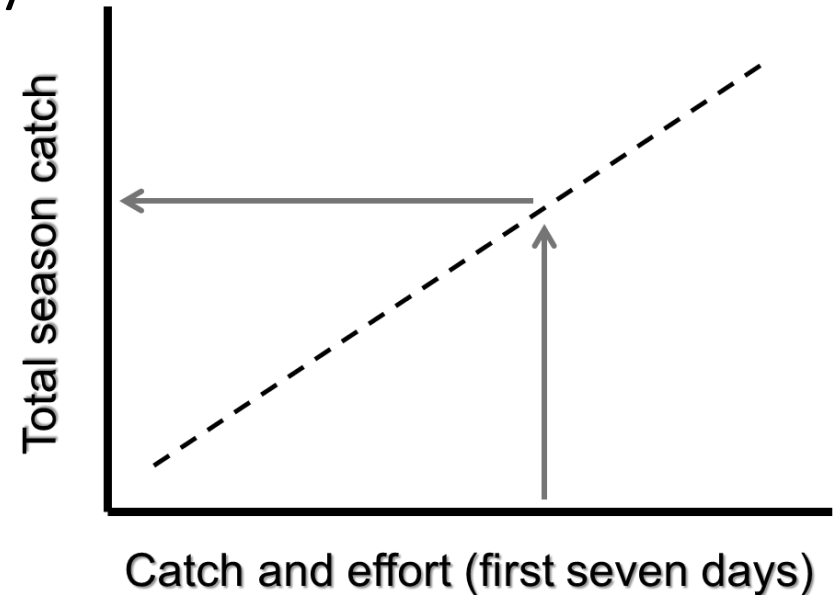


# Southeast Alaska Commercial Dungeness Crab

## **Management Plan** – (Proposal 235 repeals this plan)

### Harvest Projection Threshold

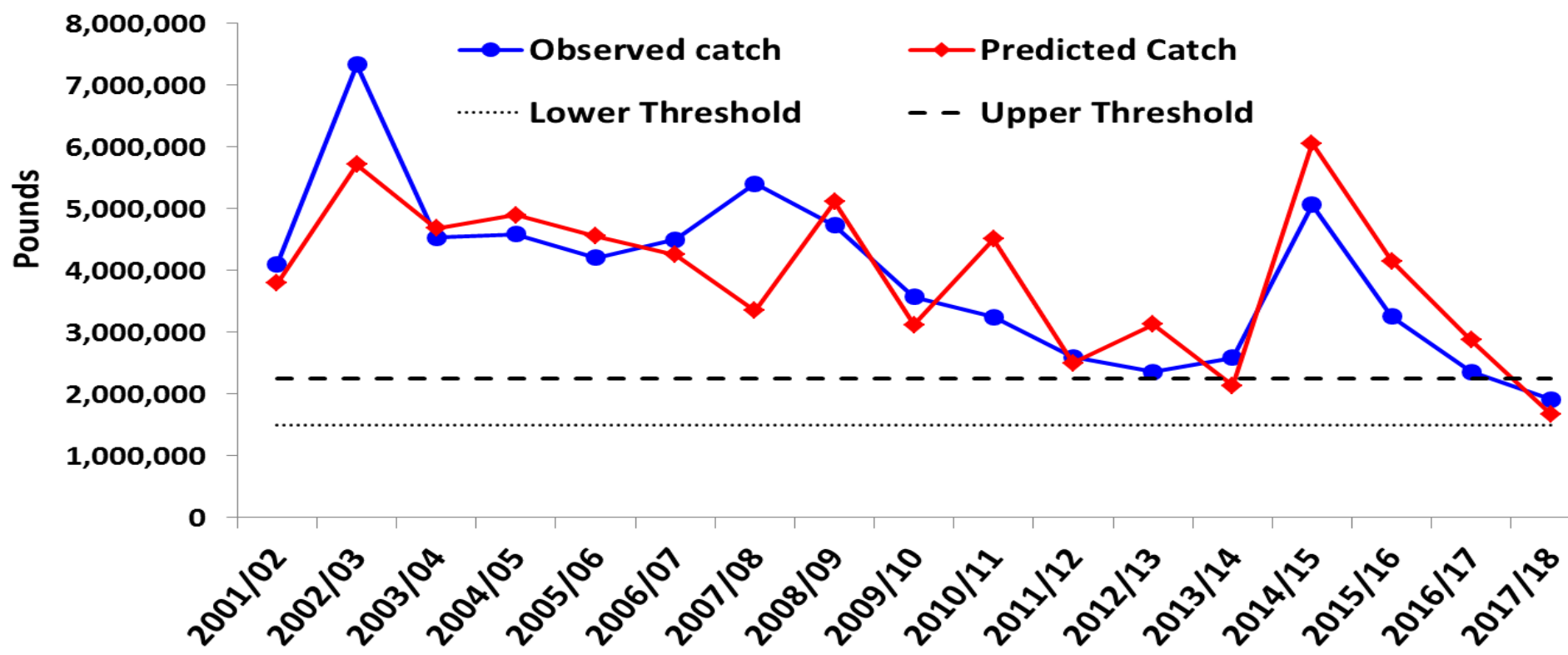
- Simple regression to predict the current season's catch, based on the catch and effort in the first seven days.



- Based on three variables:
  1. Pounds of crab landed in the first seven days
  2. Number of permits that made landings in the first seven days
  3.  $\frac{7 \text{ day catch (lbs)}}{\text{season catch (lbs)}} = \text{ratio of 7 day catch to total season catch (lbs)}$

# Southeast Alaska Commercial Dungeness Crab

Southeast Dungeness Total Catch and Predicted Catch at Day 7



Season lengths based on projection:

Season	<1.5 million lb	Between 1.5 and 2.25 million lb	>2.25 million lb
Summer	Closes no sooner than 21 days after season opening.	Closes no sooner than 28 days after season opening.	Complete season
Fall	No fall season.	30 day fall season.	Complete season

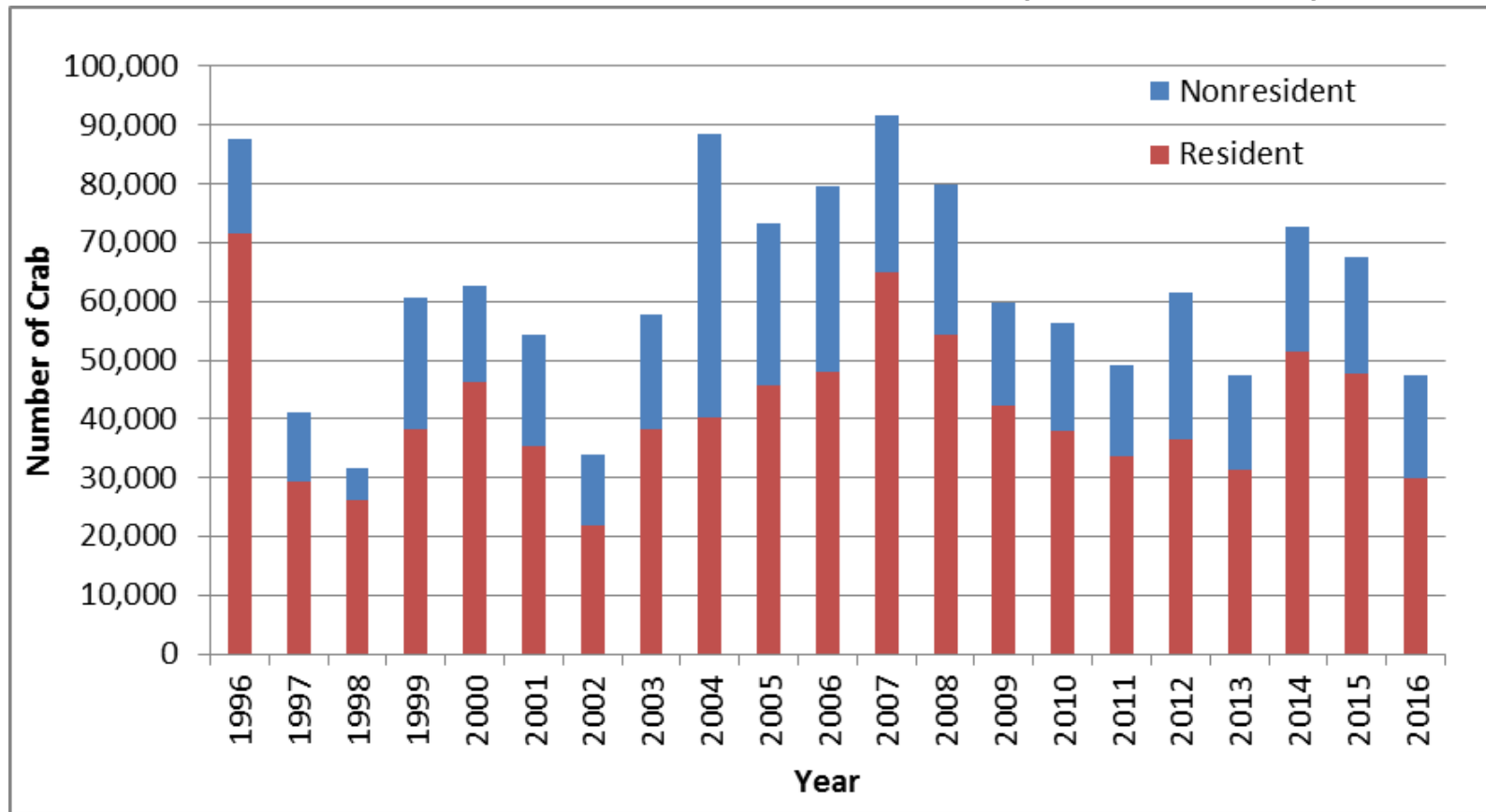
# Southeast Alaska Crab Sport Fisheries

## **Regulations:**

- Dungeness and Tanner Crab (in combination):
  - Bag and possession limit: resident and nonresident anglers, 3 male crab.
  - Size limits: 5½ inches minimum size for Tanner and 6 ½ inches minimum size for Dungeness.
  - Gear Limits:
    - Dungeness: 4 pots or 10 ring nets per person with a maximum of 10 pots or 20 ring nets per vessel.
    - Tanner: 4 pots or 10 ring nets maximum per vessel.
- King crab is closed to sport fishing.

# Southeast Alaska Crab Sport Fisheries

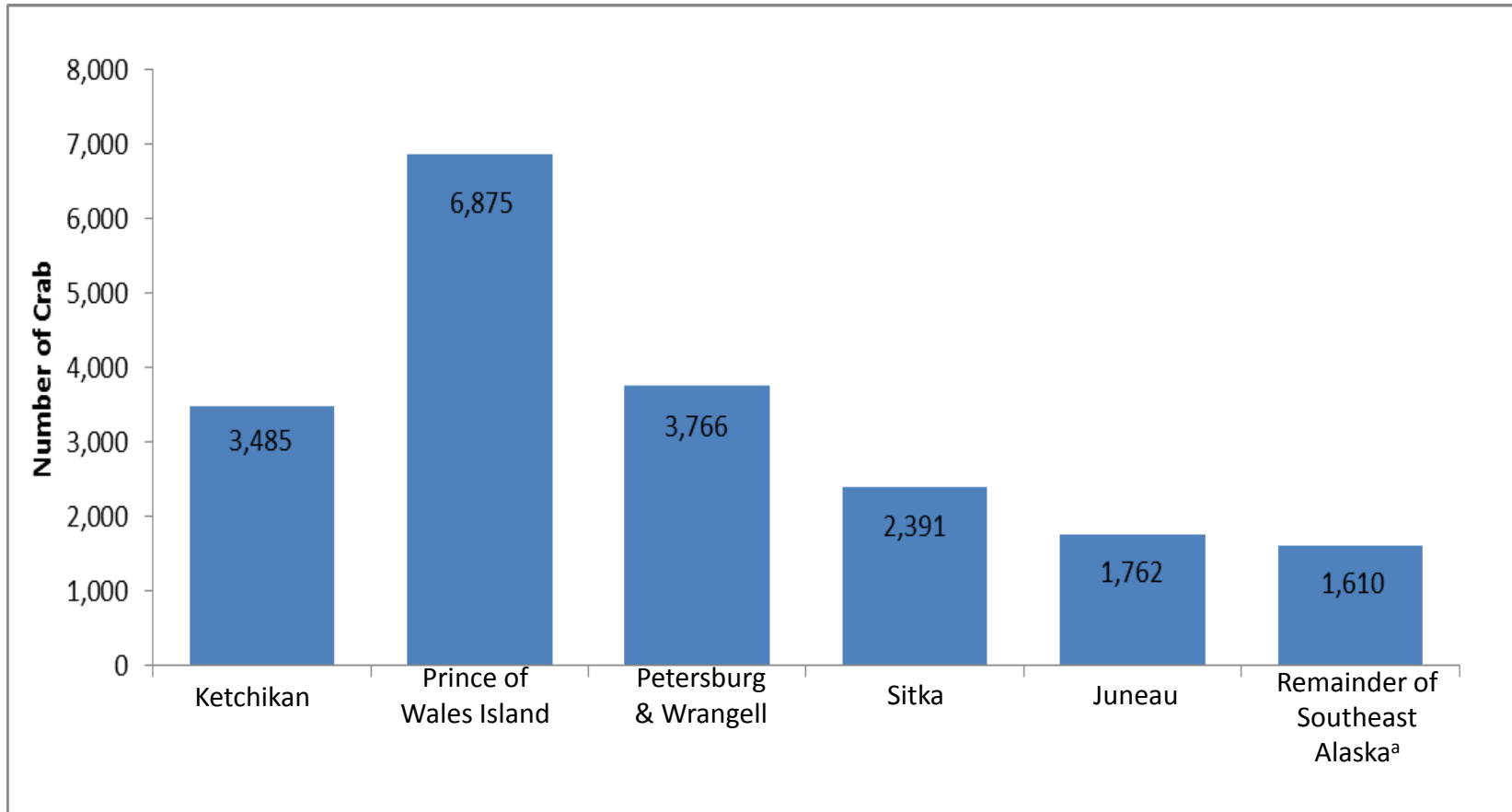
Statewide harvest survey estimates of Dungeness crab harvest in Southeast Alaska by residency.



- On average nonresidents harvest 33% or 20,611 Dungeness crab annually (1996-2016).

# Southeast Alaska Crab Sport Fisheries

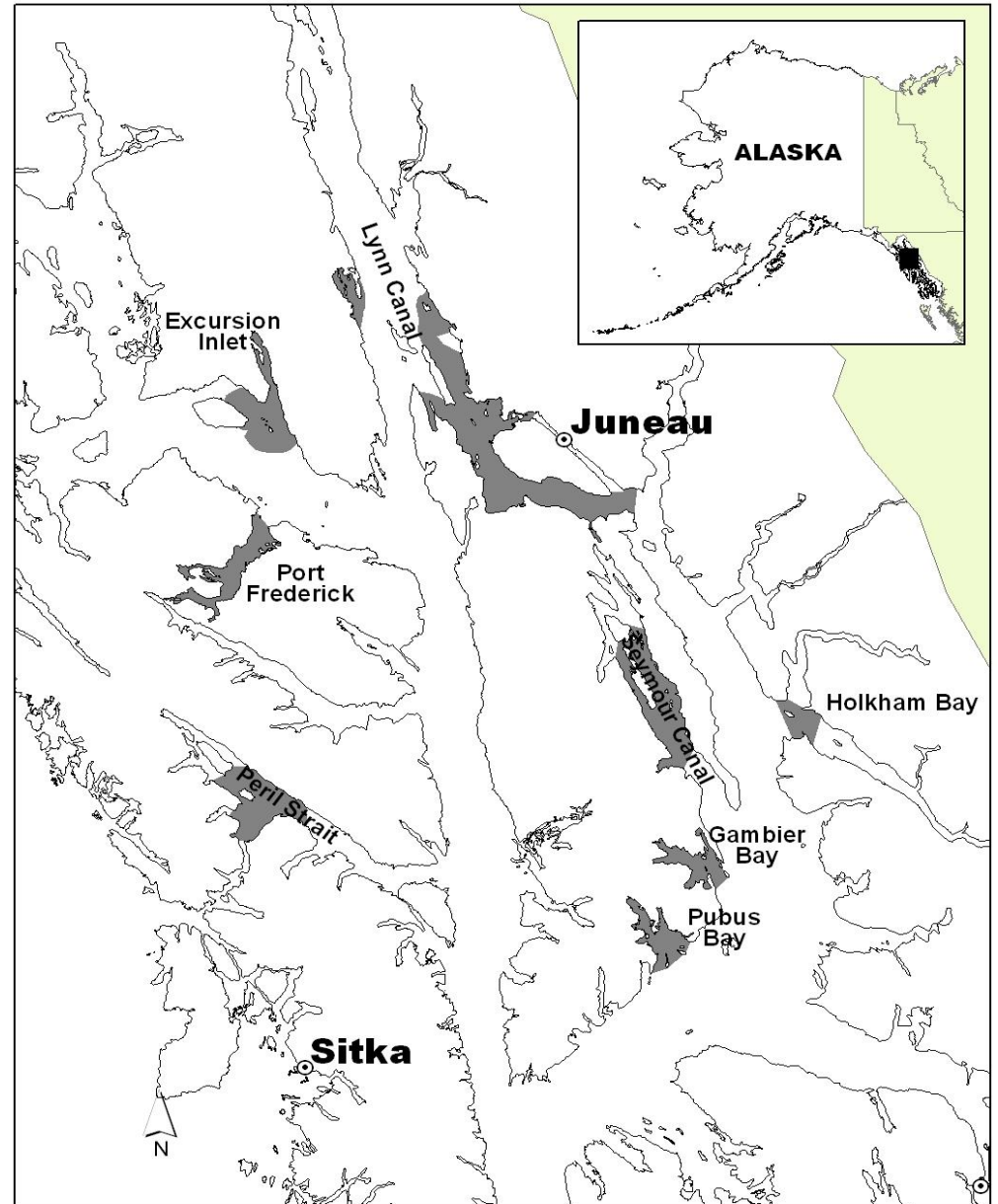
Five-year average (2012–2016) nonresident Dungeness crab harvest by statewide harvest survey area.



<sup>a</sup>Includes the Haines, Skagway, and Glacier Bay areas, low response rates prohibit survey area estimates for these locations.

# Southeast Alaska Commercial Red King Crab

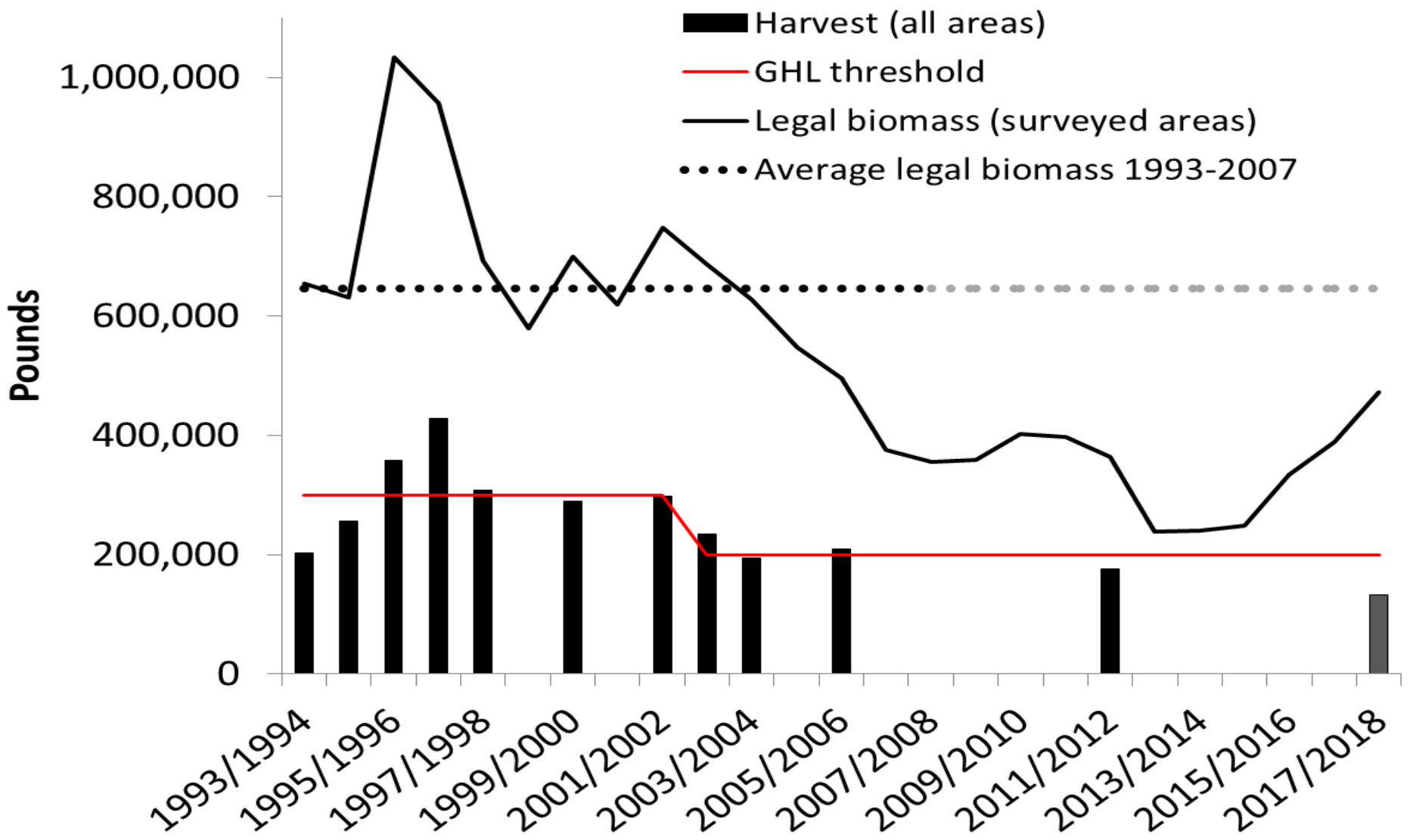
## Major red king crab fishing grounds





# Southeast Alaska Commercial Red King Crab

## Survey area legal biomass and commercial harvest



# Southeast Alaska Commercial Red King Crab

## **Management Overview:**

- Pot limits based on GHL (20, 30, 40, or 50 pots)
- Logbooks and call-ins required
- Allocation plan for commercial and personal use in Section 11-A (5 AAC 34.111)
- Personal use permit required for 11-A only
  - Proposal 234 would require a permit for all of Southeast

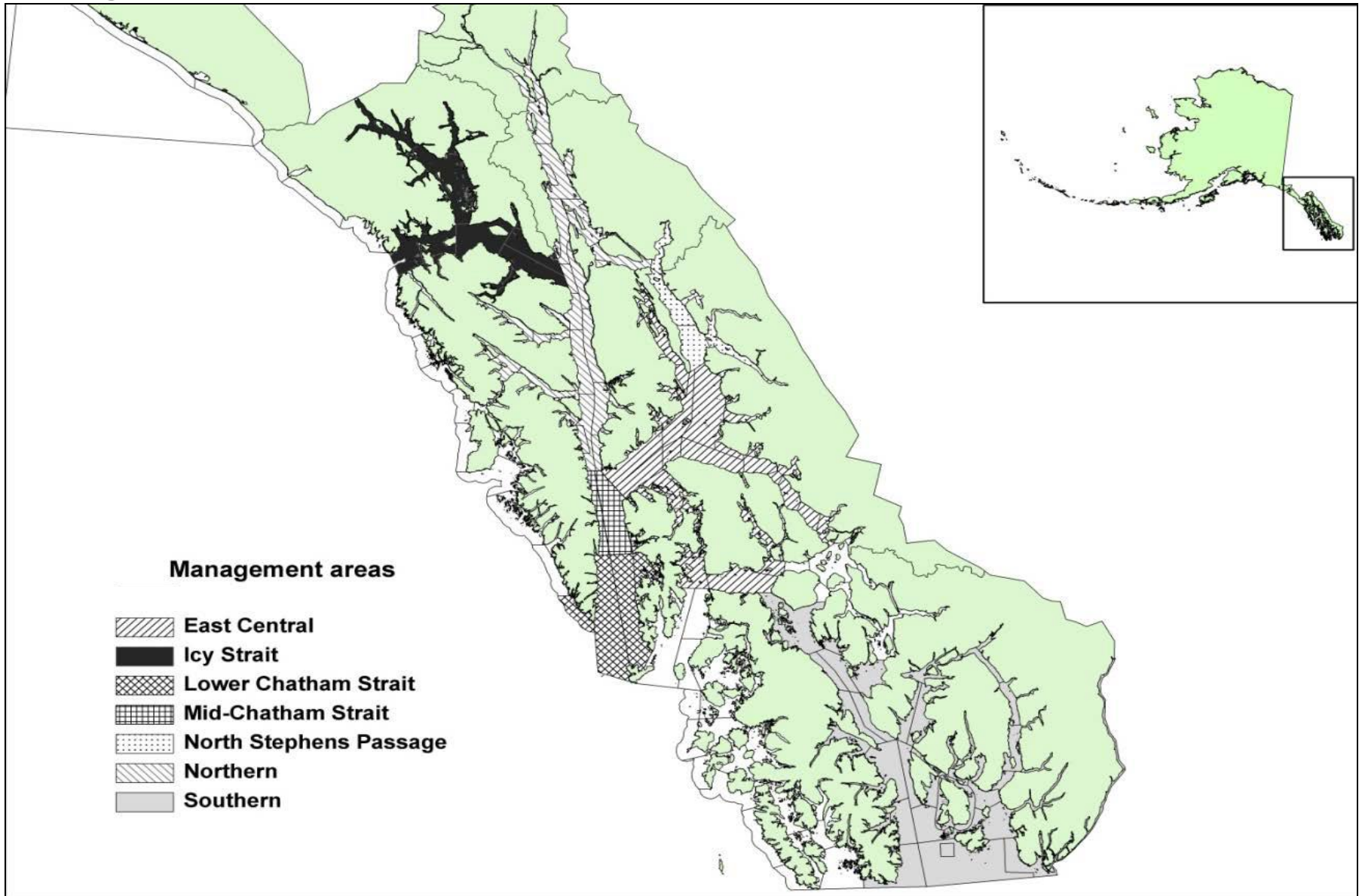
## **Management Plan: 5 AAC 34.113**

- *“Policy on King and Tanner Crab Resource Management”*
- Closures for conservation concerns or high effort
- Minimum GHL threshold of 200,000 pounds
- Appropriate harvest rates
- Regional GHL set using survey biomass and estimated proportion of historic harvest in non-surveyed areas

# Southeast Alaska Commercial Golden King Crab

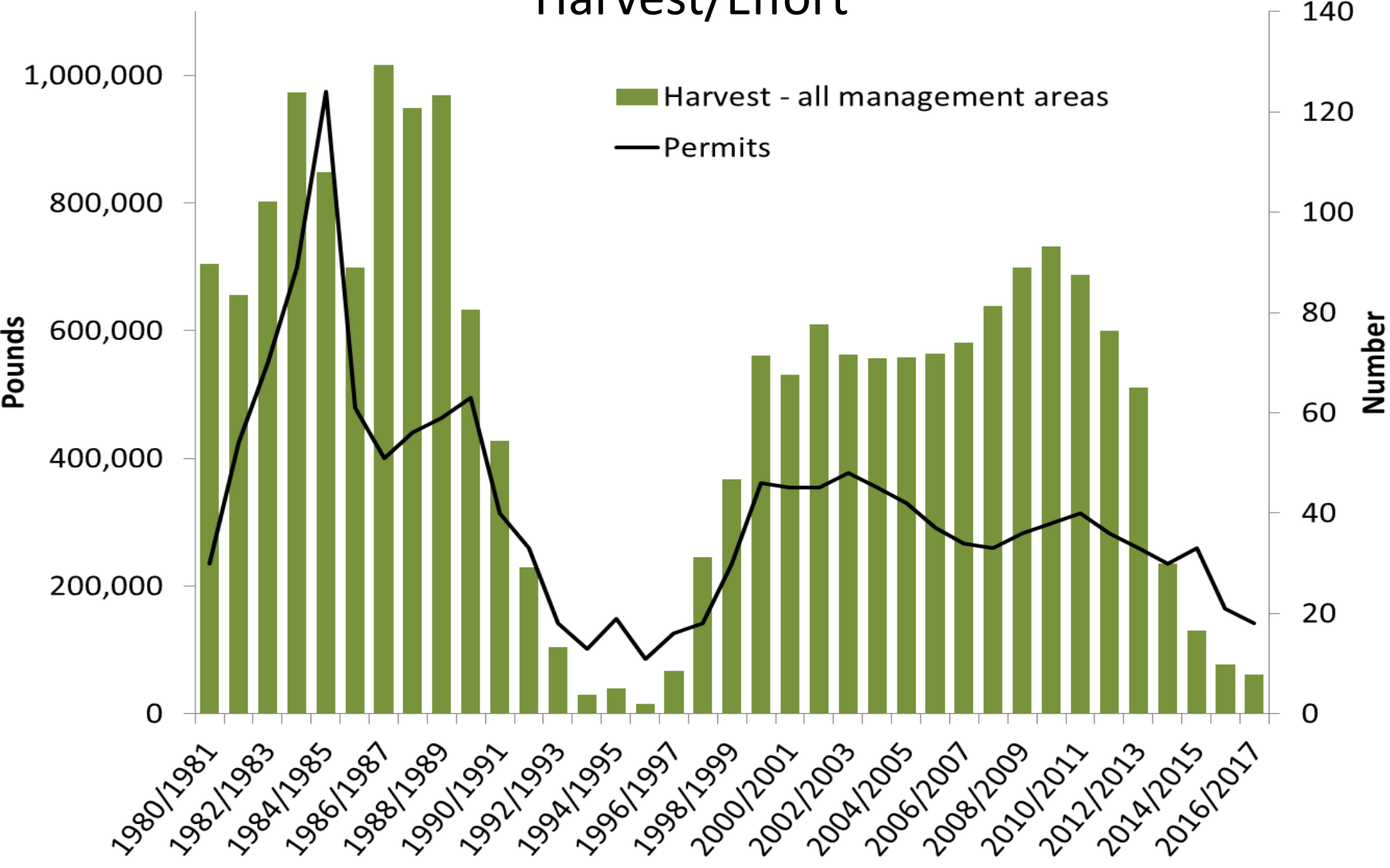
## Management Areas

Proposal 65: see RC-2, p.39



# Southeast Alaska Commercial Golden King Crab

## Harvest/Effort



# Southeast Alaska Commercial Golden King Crab

## Management

- Pot limit = 100
- Logbooks and call-ins required
- GHs are set annually
- Data sources (all fishery dependent):  
fish tickets, logbooks, and  
port sampling



## Management Plan: 5 AAC 34.114 (Proposal 68)

- *“Policy on King and Tanner Crab Resource Management”*
- Each fishing area managed as a separate stock
- Closures for conservation concerns or high effort
- Managed based on historical fishery performance
- Lack of information = conservative management

# Southeast Alaska Commercial Golden King Crab

## **Guideline Harvest Ranges: 5 AAC 34.115**

- 1) Northern Area: 0–175,000\* pounds;
- 2) Icy Strait Area: 0–75,000\* pounds;
- 3) North Stephens Passage Area: 0–25,000 pounds;
- 4) East Central Area: 0–300,000\* pounds;
- 5) Mid-Chatham Strait Area: 0–150,000 pounds;
- 6) Lower Chatham Strait Area: 0–50,000 pounds;
- 7) Southern Area: 0–25,000 pounds.

## **Proposal 69\***

*145,000 pounds*

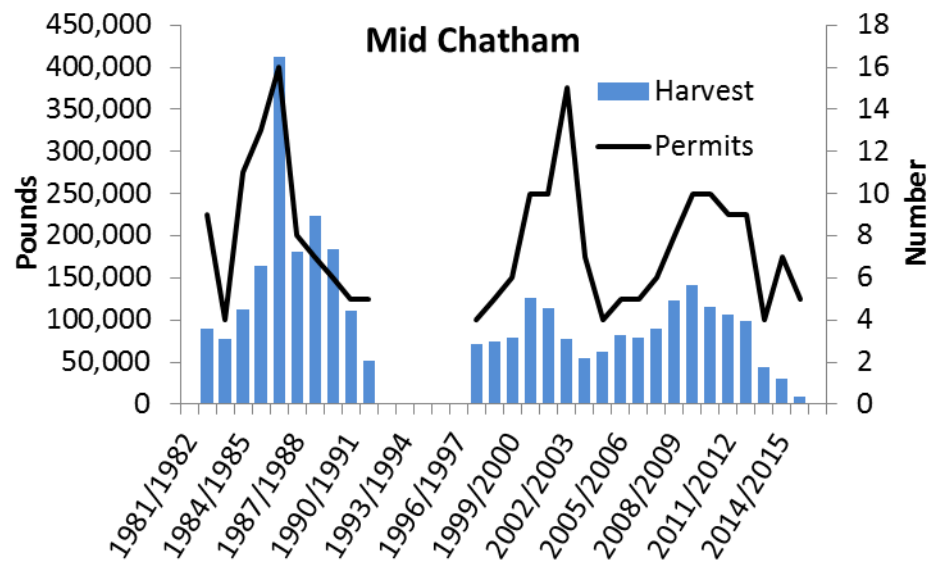
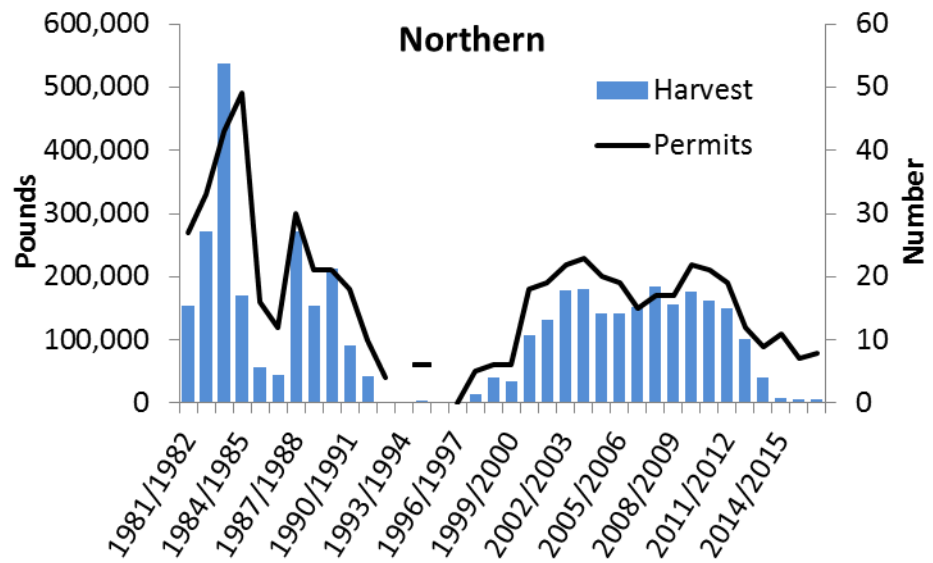
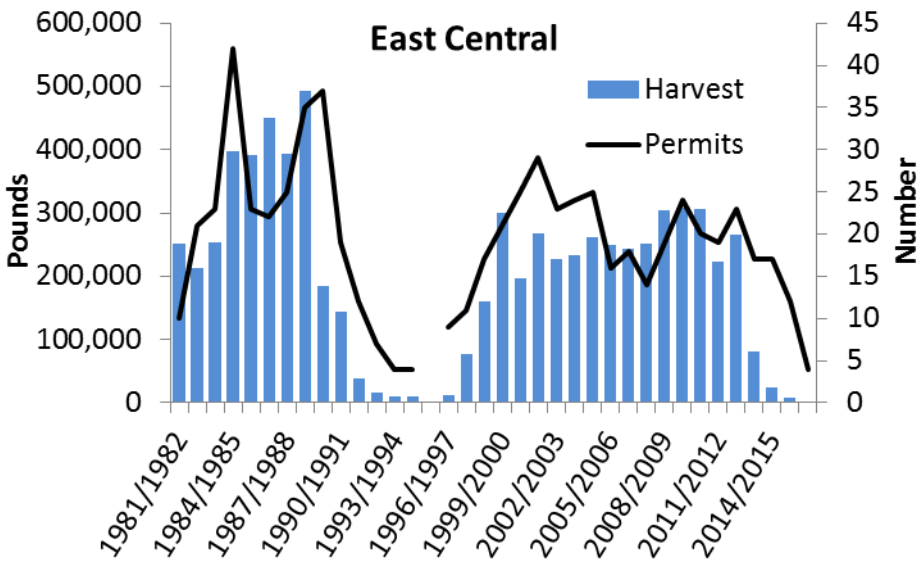
*55,000 pounds*

*225,000 pounds*



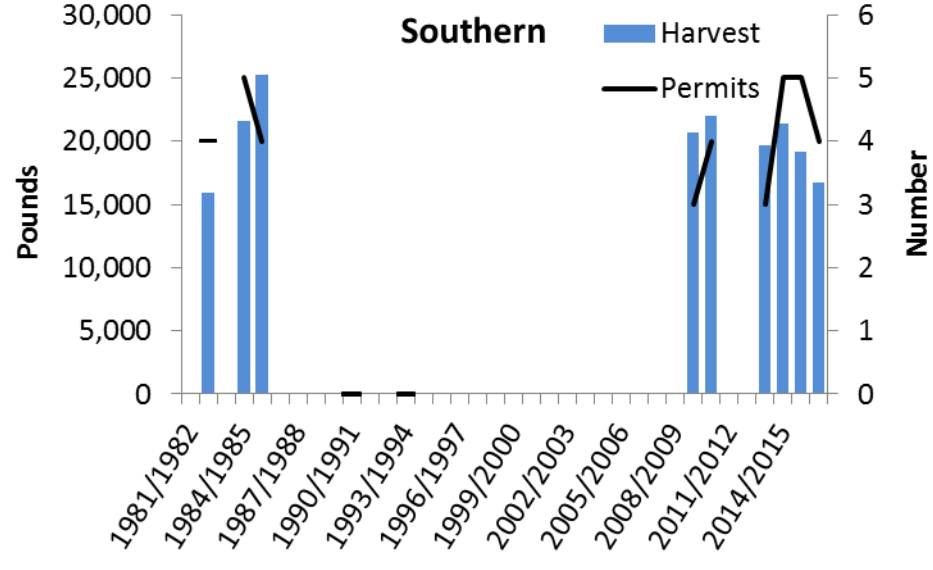
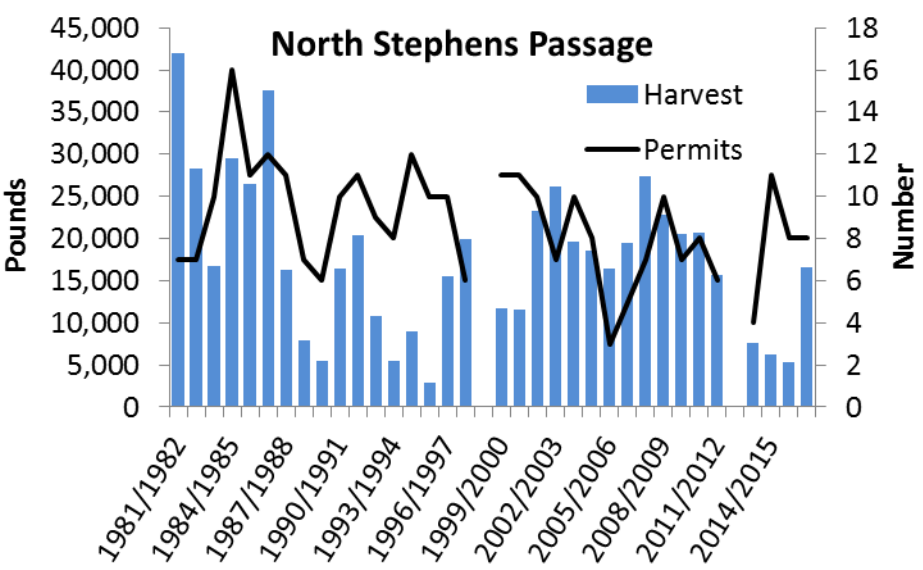
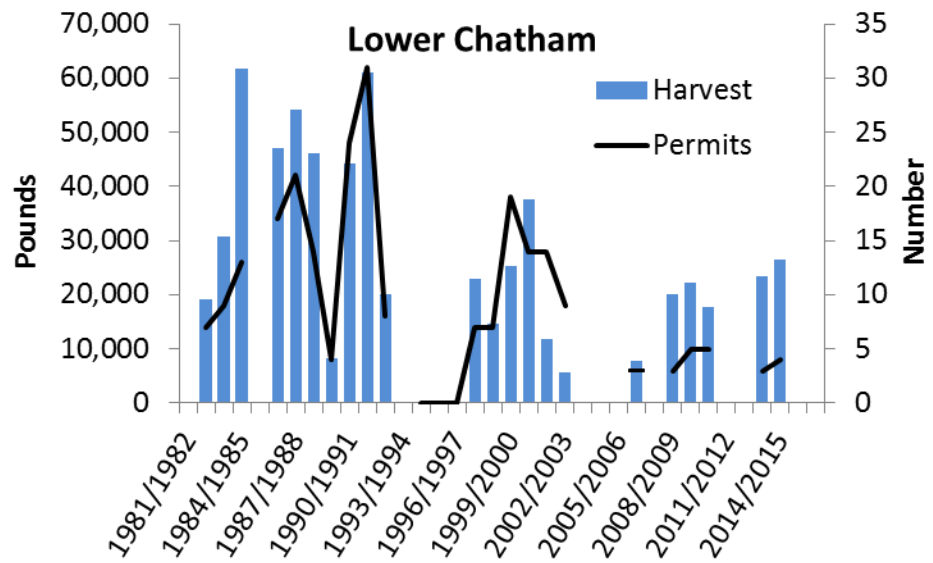
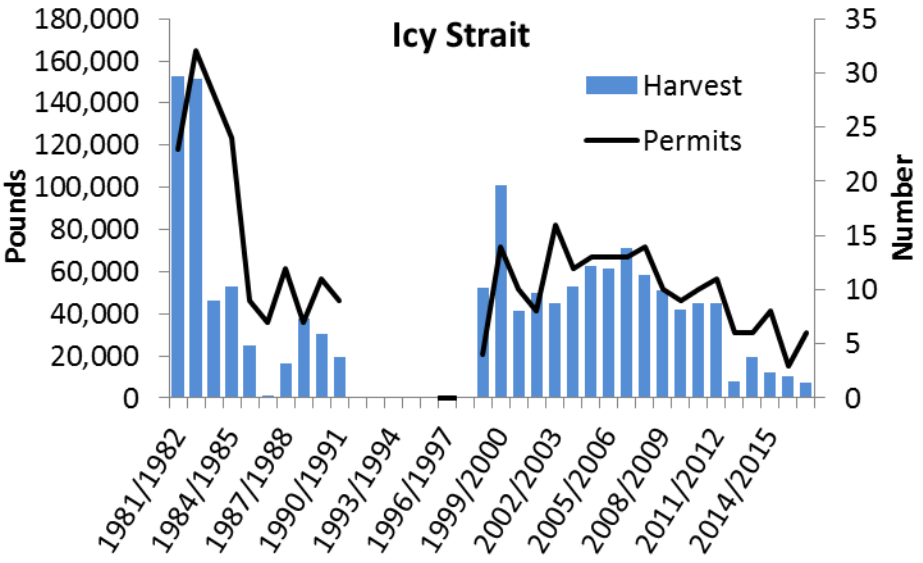
# Southeast Alaska Commercial Golden King Crab

## Harvest/Effort – by area



# Southeast Alaska Commercial Golden King Crab

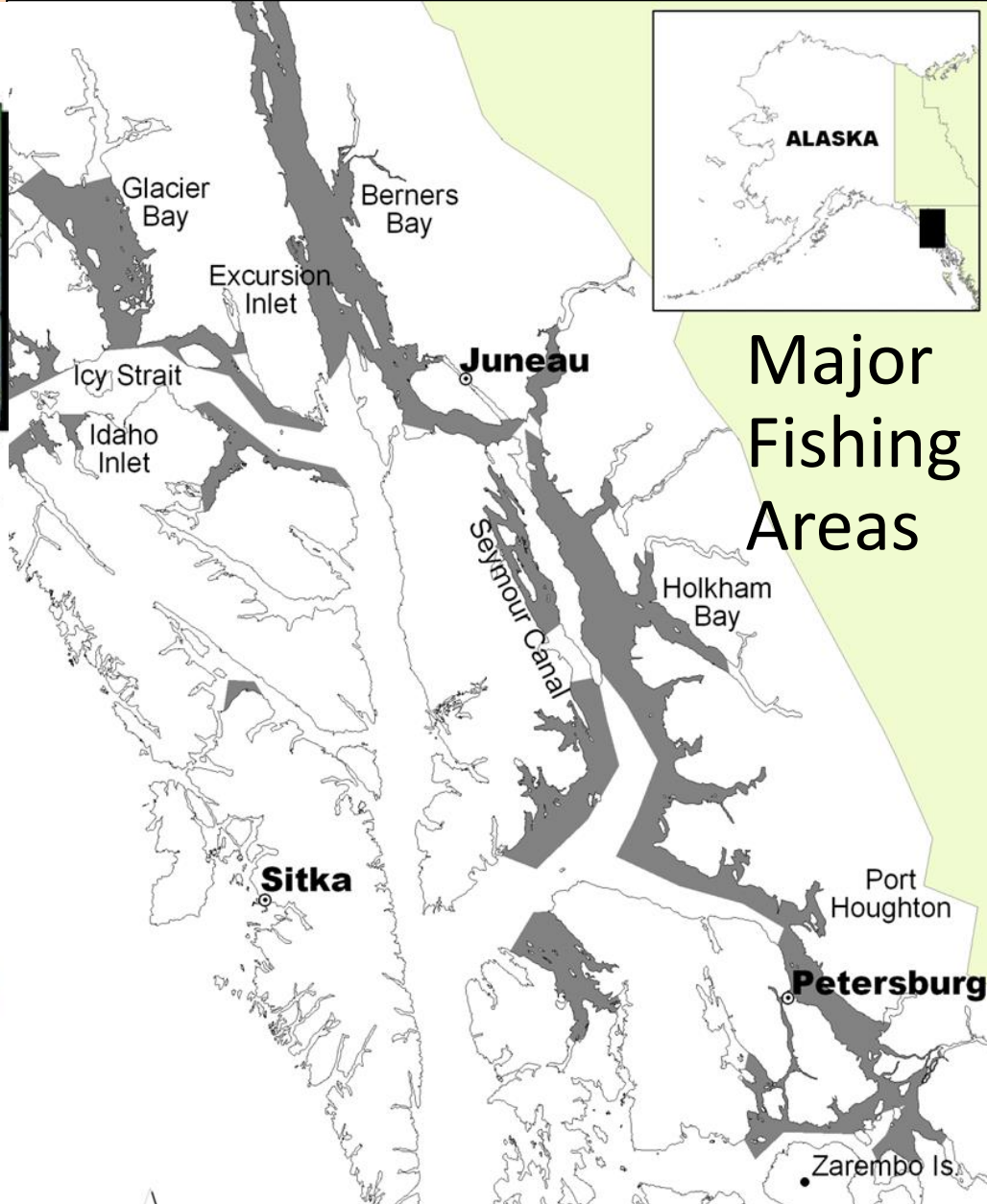
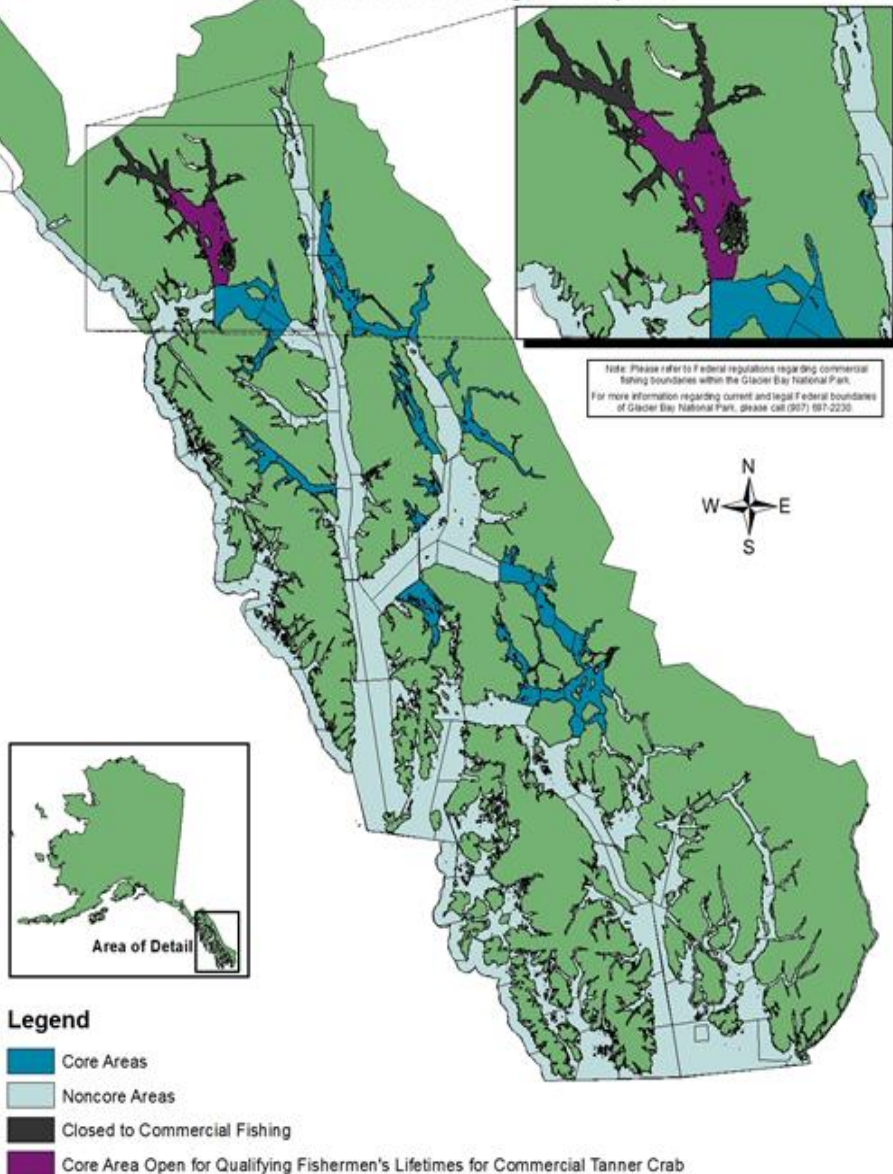
## Harvest/Effort – by area





# Southeast Alaska Commercial Tanner Crab

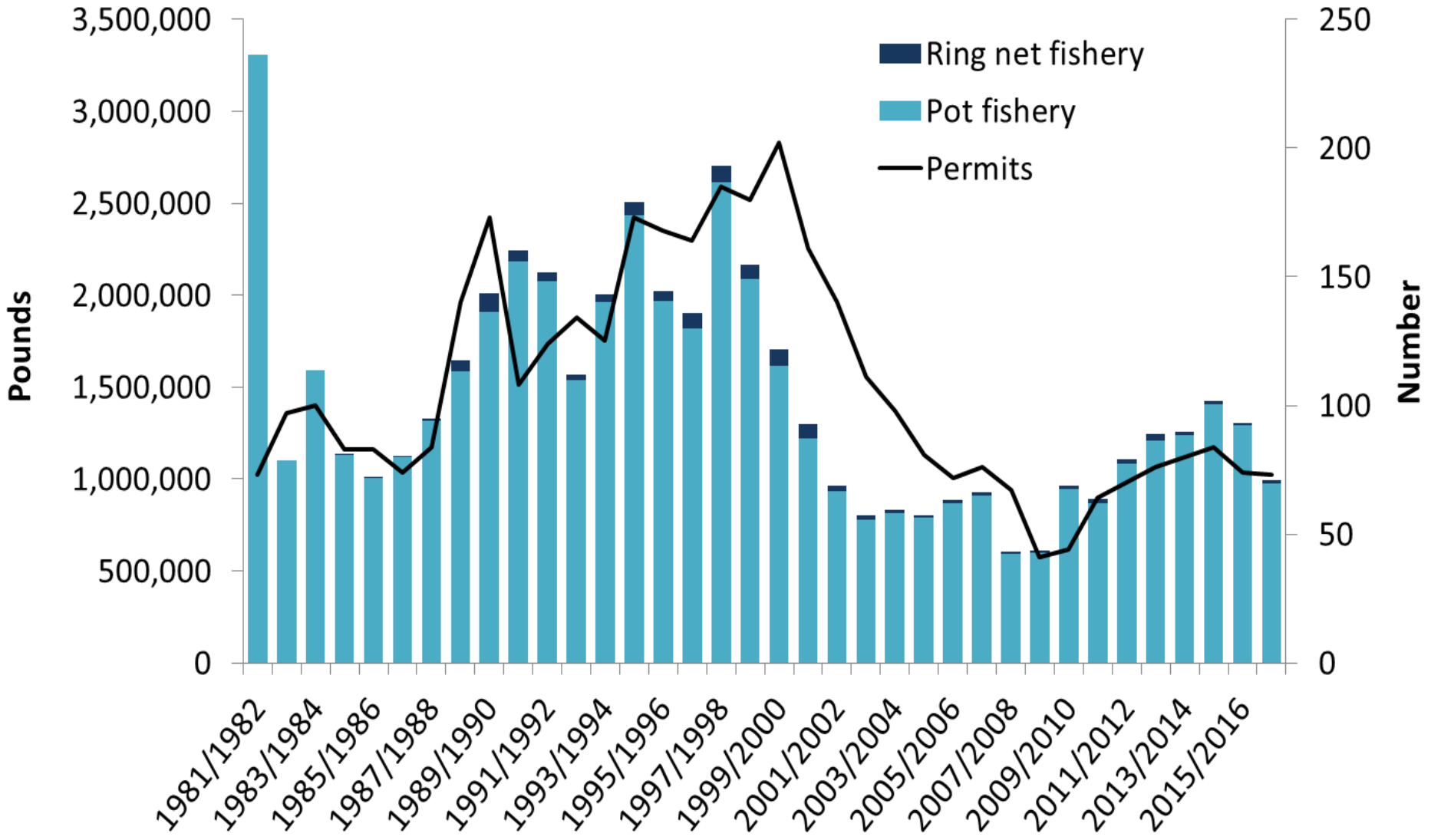
Commercial Tanner Crab Management Core, Non Core and Closed Areas of Registration Area A  
 Refer to 5AAC 35.113 for Legal Descriptions



Major Fishing Areas

# Southeast Alaska Commercial Tanner Crab

## Harvest/Effort



# Southeast Alaska Commercial Tanner Crab

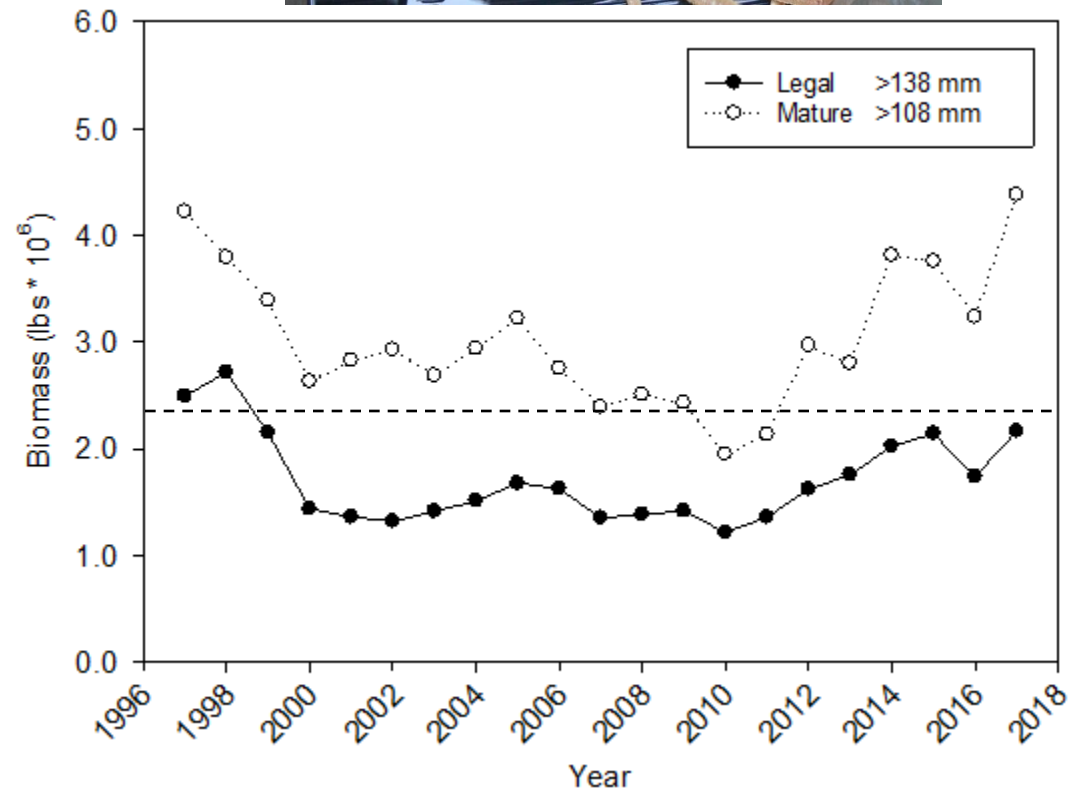
## Management

- Pot Limit = 80 pots
- Logbooks required (pot fishery)



## Harvest Strategy

- Biomass-based minimum stock threshold to open
  - 2.3 million pounds of mature males



# Southeast Alaska Commercial Tanner Crab

## Harvest Strategy

- Fishing Area split into core and noncore areas
- Season length determined by biomass and effort
  - Core and noncore areas open for initial period of 5–10 days
  - Noncore areas open for an additional 5 days

Proposal 72 – ‘exploratory’ areas would open for an additional 14 days

Proposal 73 – Equal quota share fishery



<b>Pots Registered</b>	<b>Additional Fishing Days</b>	<b>Additional Fishing Days</b>
	<i>Mature Biomass is Between 2,300,000 and 5,500,000 lb</i>	<i>Mature Biomass is Greater than 5,500,000 lb</i>
1,600 – 2,399	4 Additional Days	5 Additional Days
2,400 – 3,199	3 Additional Days	4 Additional Days
3,200 – 3,999	2 Additional Days	3 Additional Days
4,000 – 5,599	1 Additional Days	2 Additional Days
5,600 – 7,000	0 Additional Days	1 Additional Days

# Thank you / Questions?

