

Commercial Salmon Net Fisheries of the Southeast Alaska Region

Alaska Board of Fisheries

January 11–23, 2018

Sitka



Troy Thynes

Petersburg-Wrangell Area Management Biologist

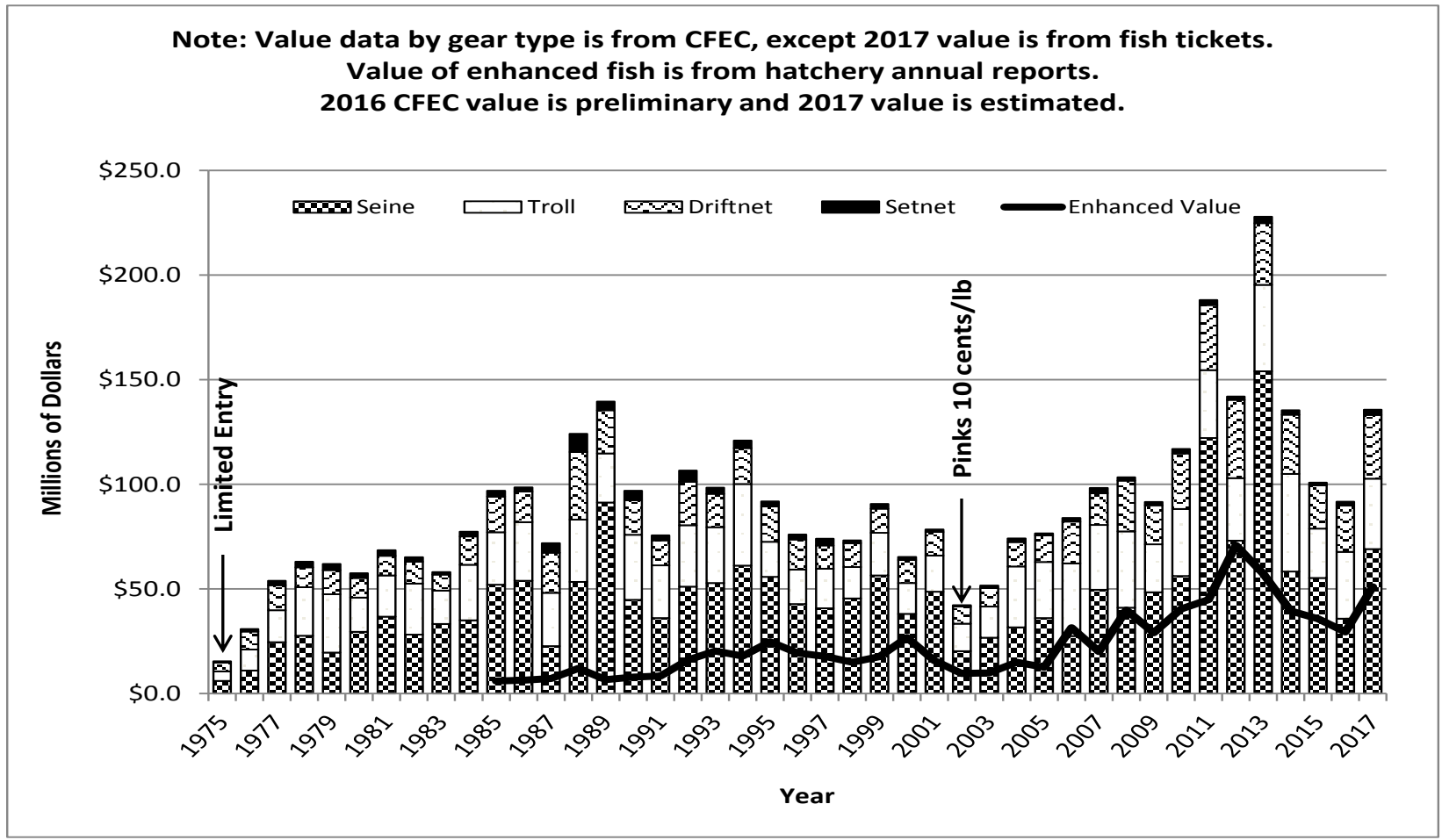
Division of Commercial Fisheries

Presentation Topics

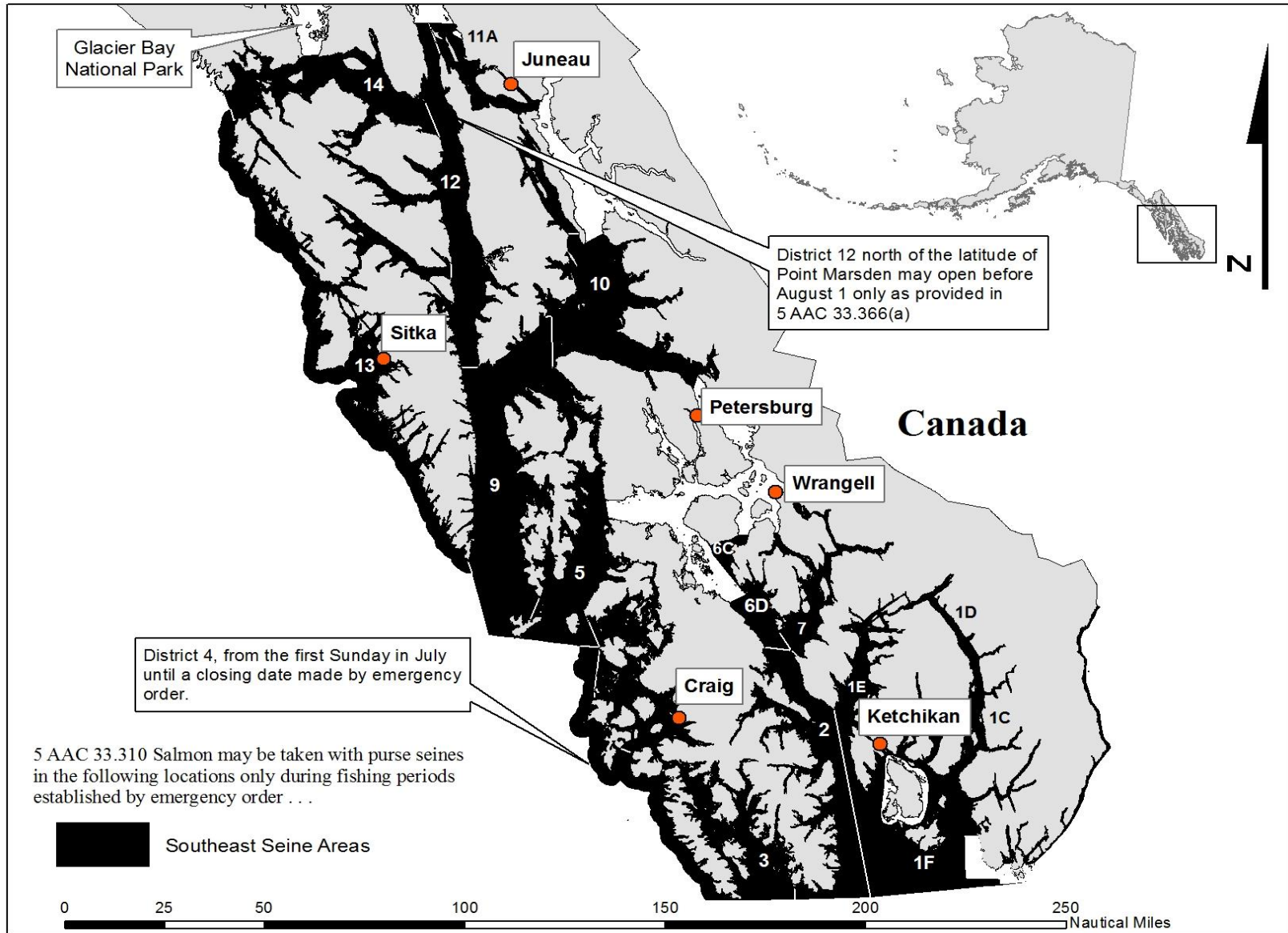
- Regional Exvessel Values
- Purse Seine Fishery Overview
- Drift Gillnet Fishery Overview
- Terminal Harvest Areas
- Hatchery Cost Recovery
- Hatchery – Wild Contributions
- Set Gillnet Fishery Overview

Regional Exvessel Values of Common Property Salmon Fisheries, 1975–2017

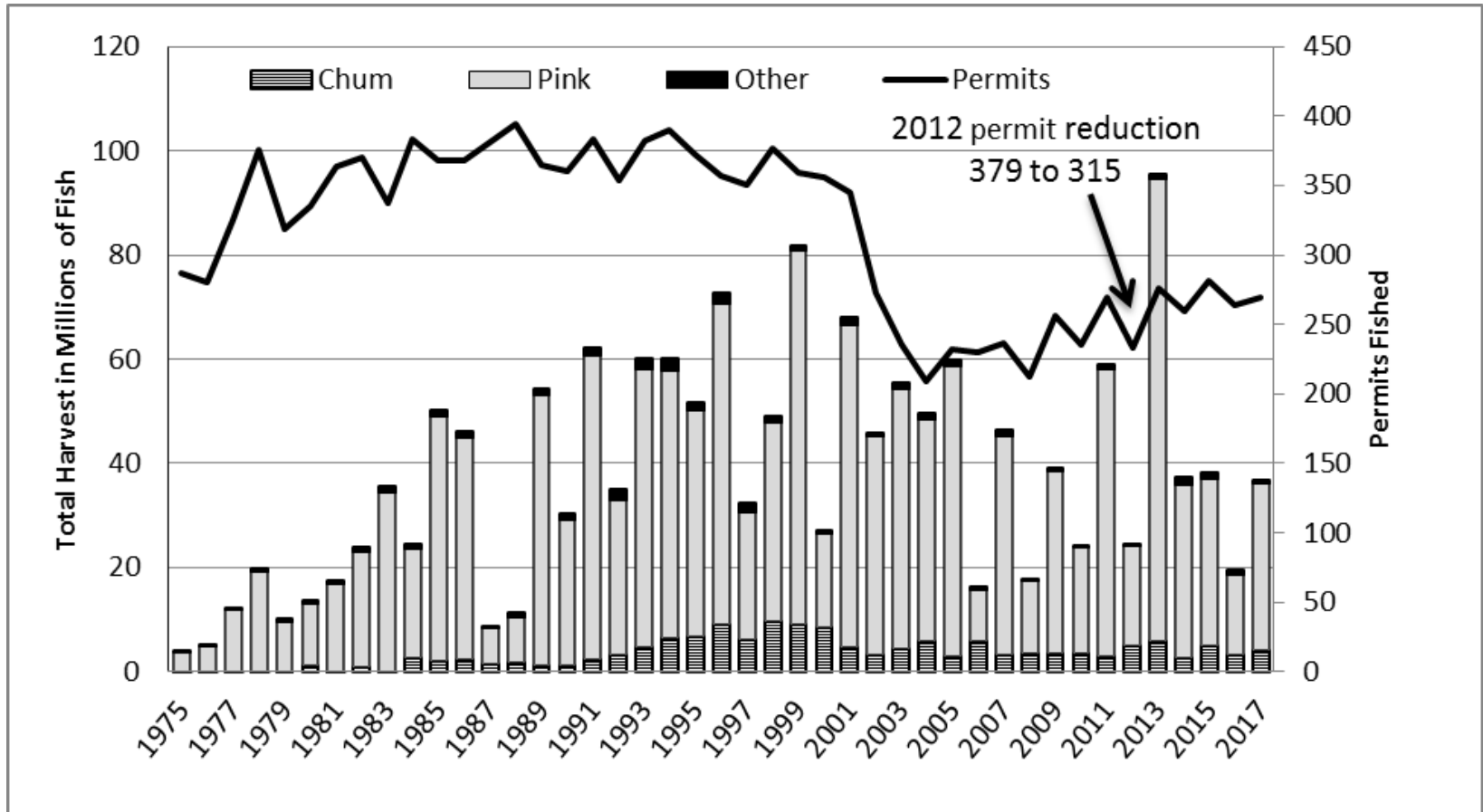
**Note: Value data by gear type is from CFEC, except 2017 value is from fish tickets.
 Value of enhanced fish is from hatchery annual reports.
 2016 CFEC value is preliminary and 2017 value is estimated.**



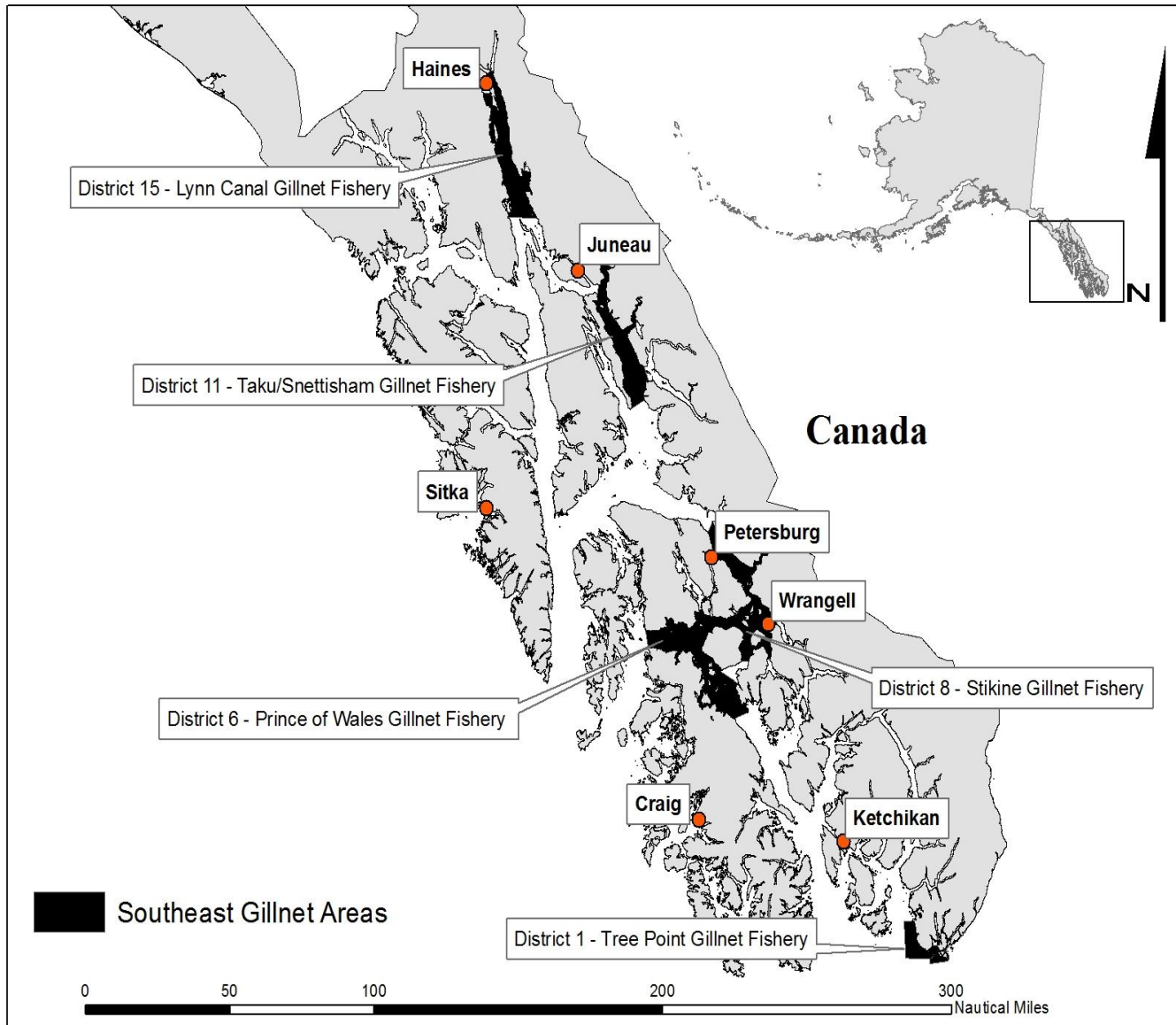
Purse Seine Fishing Areas



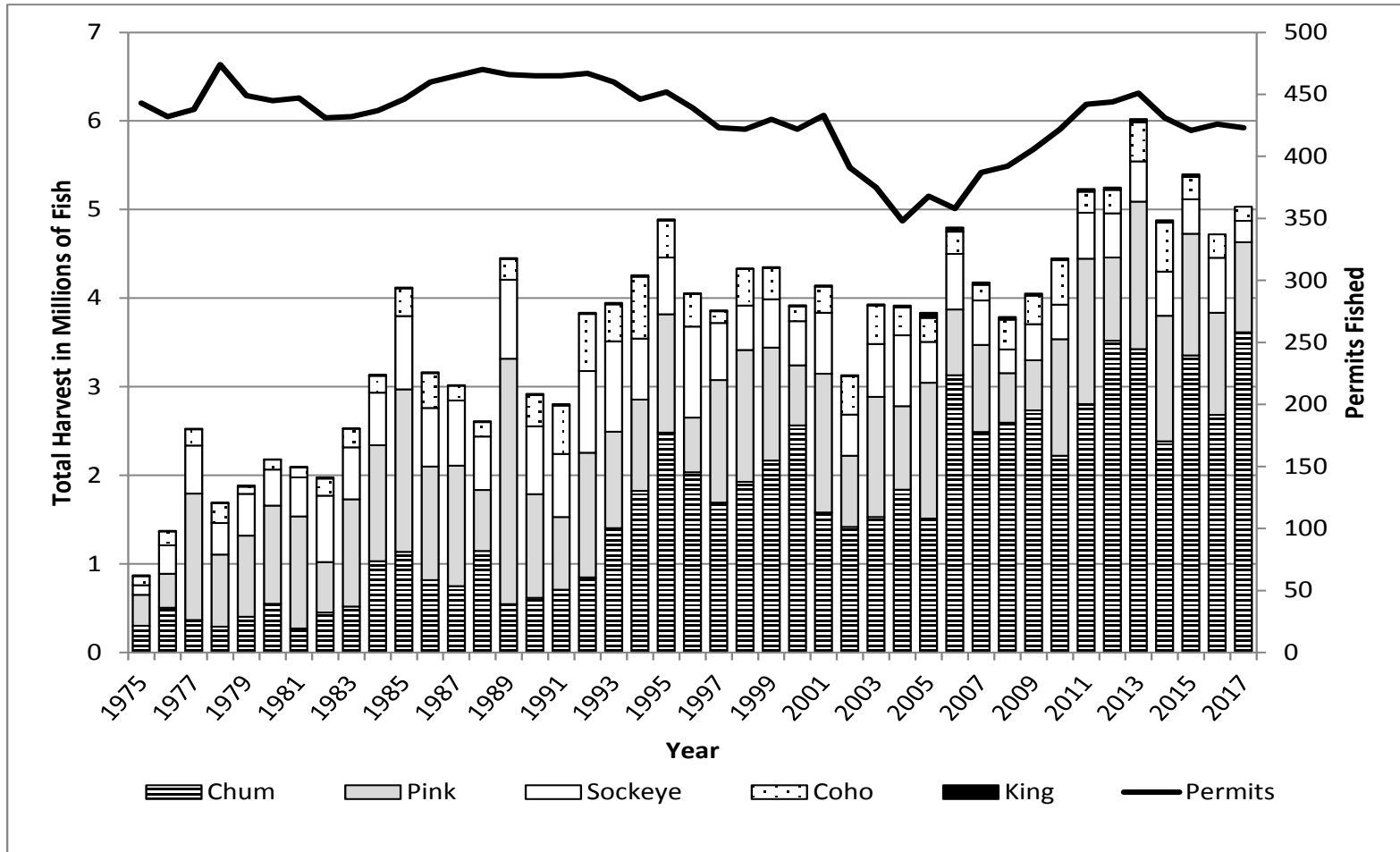
Southeast Alaska Purse Seine Harvest and Permits Fished, 1975–2017, Common Property Fisheries



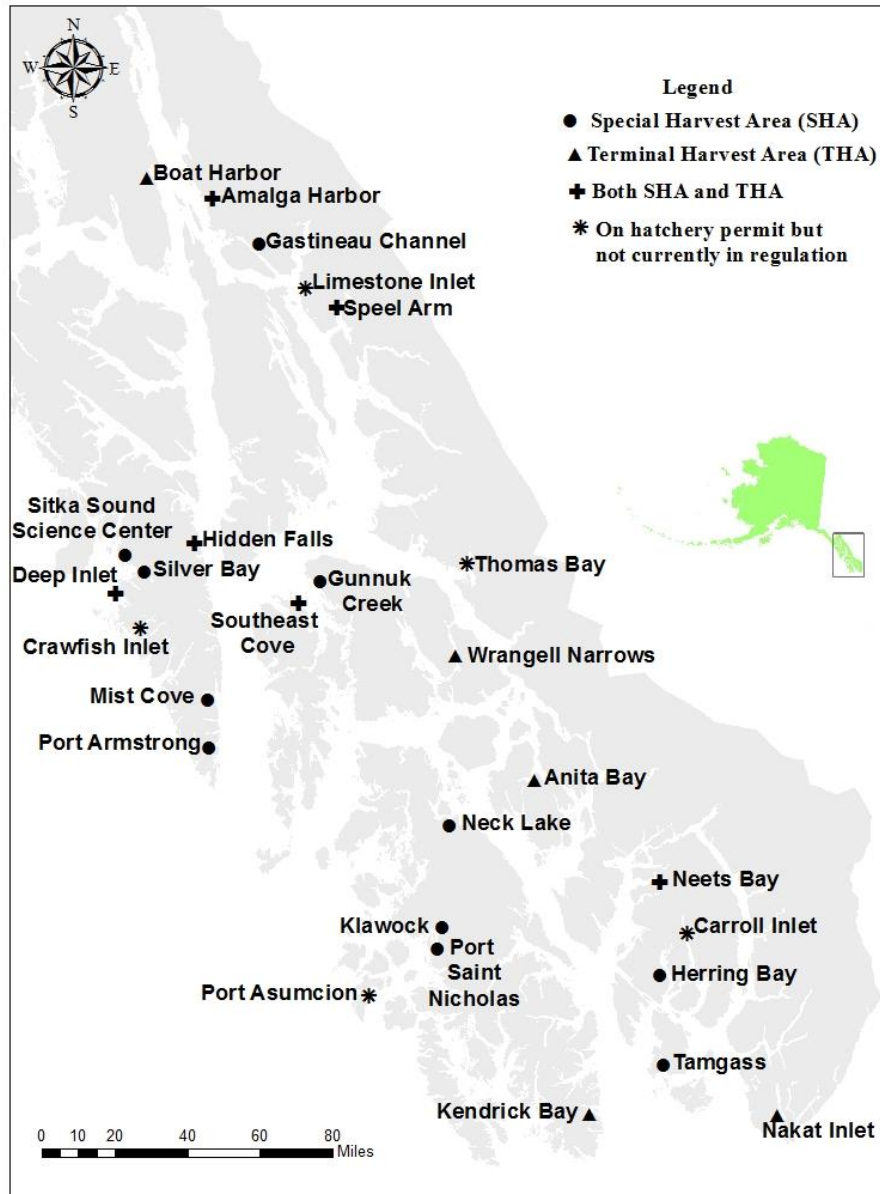
Drift Gillnet Fishing Areas



Southeast Alaska Drift Gillnet Salmon Harvests and Permits Fished, 1975–2017, Common Property Fisheries

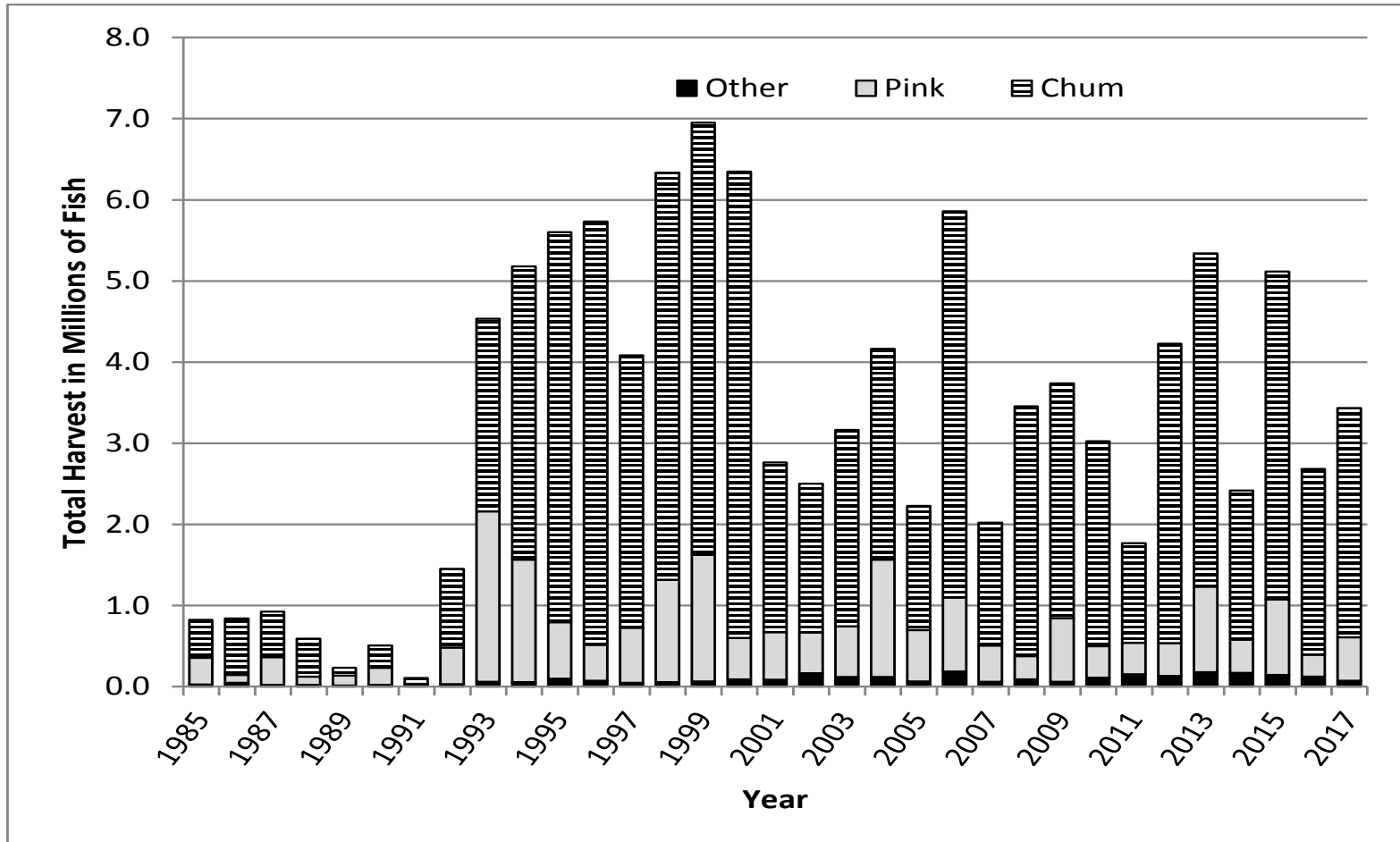


Southeast Alaska Terminal Harvest Areas

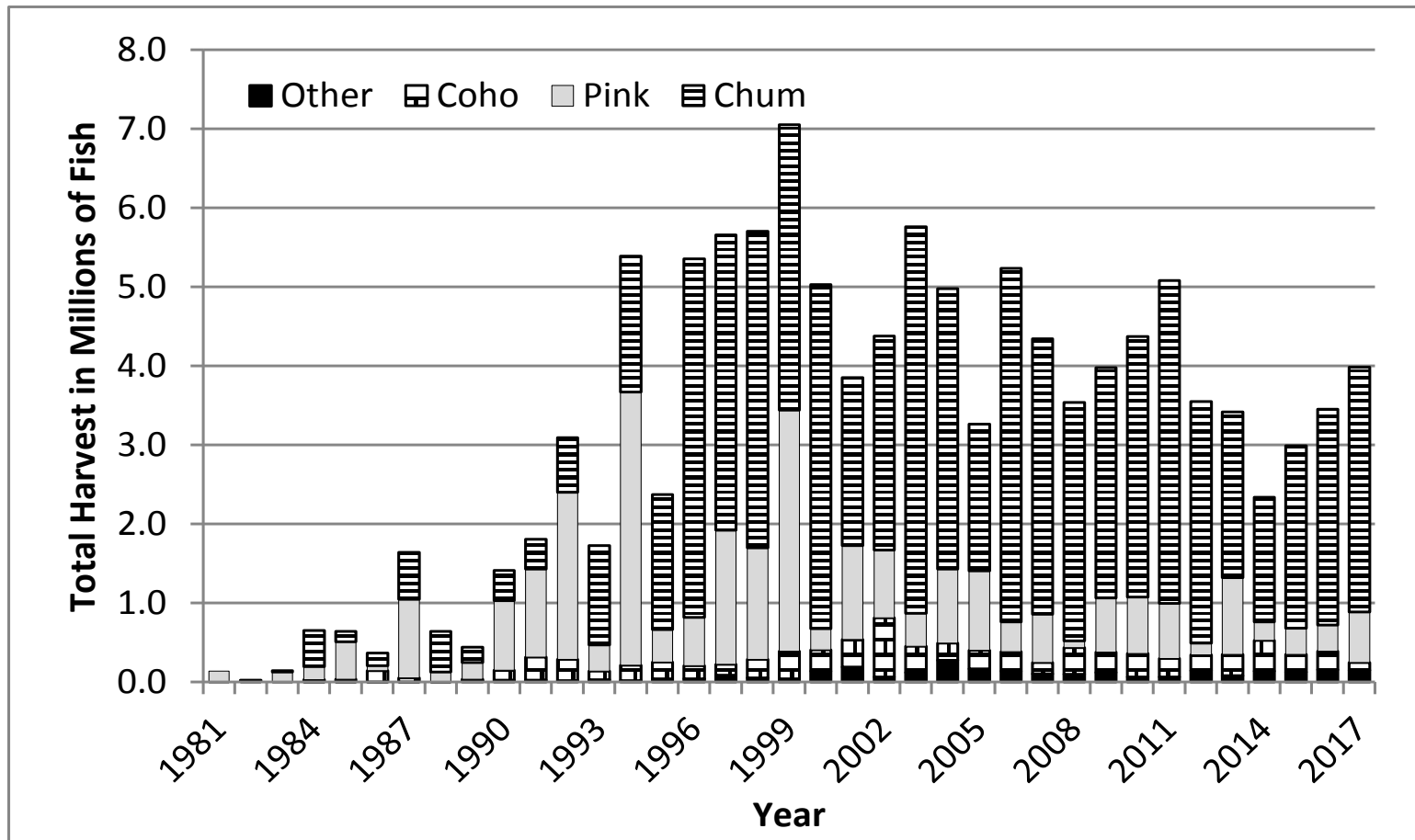


Terminal Harvest Areas

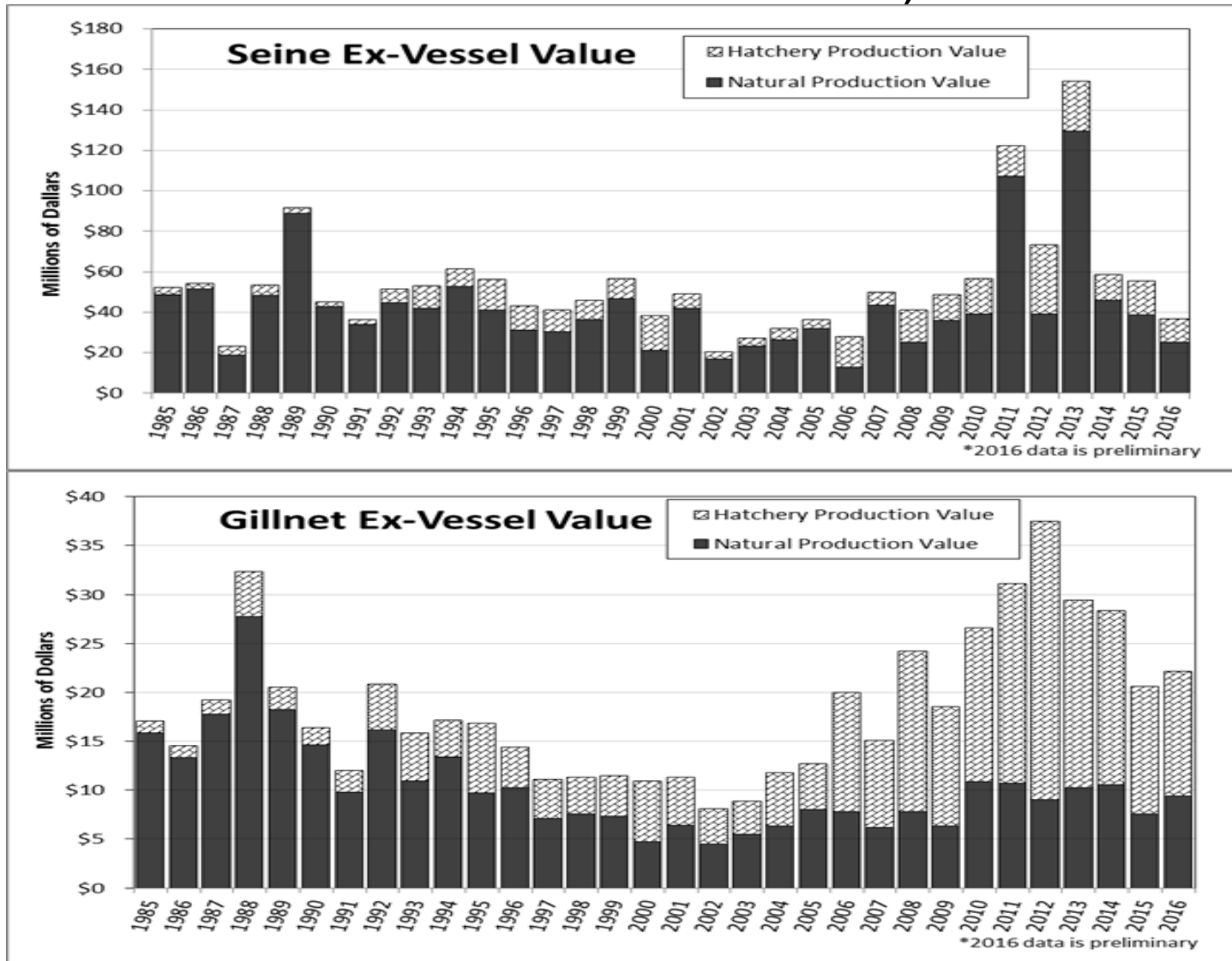
Common Property Harvests, 1985–2017



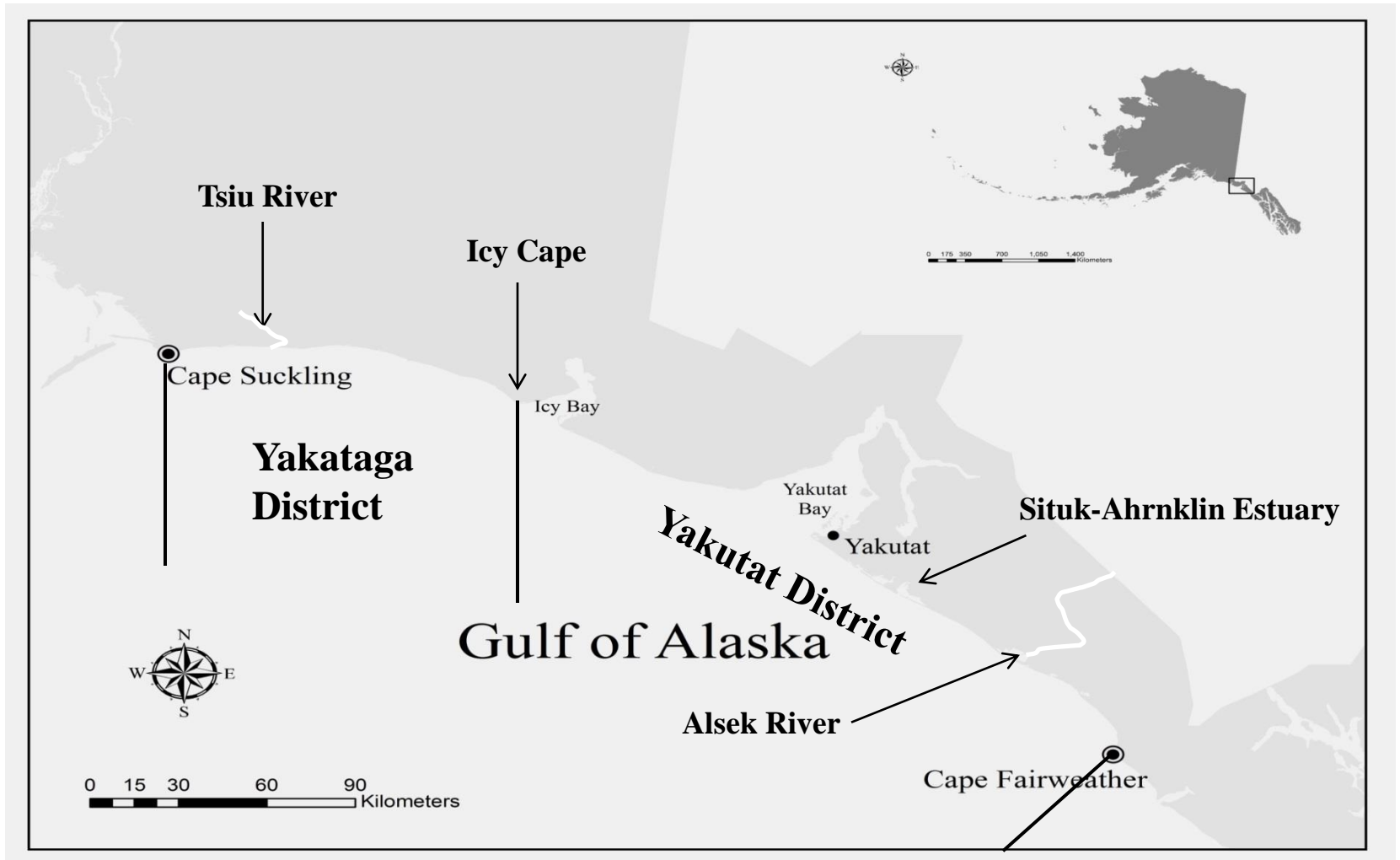
Hatchery Cost Recovery Harvests, 1981–2017



Wild Stock and Enhanced Salmon Contributions to Value of the Purse Seine and Drift Gillnet Fisheries, 1985–2016



Set Gillnet Fishing Areas, Yakutat Area



Yakutat Area Salmon Set Gillnet Harvests, and Permits Fished, 1975–2014

