

North Alaska Peninsula Salmon Fisheries

by Bob Murphy



Report to Alaska Board of Fisheries

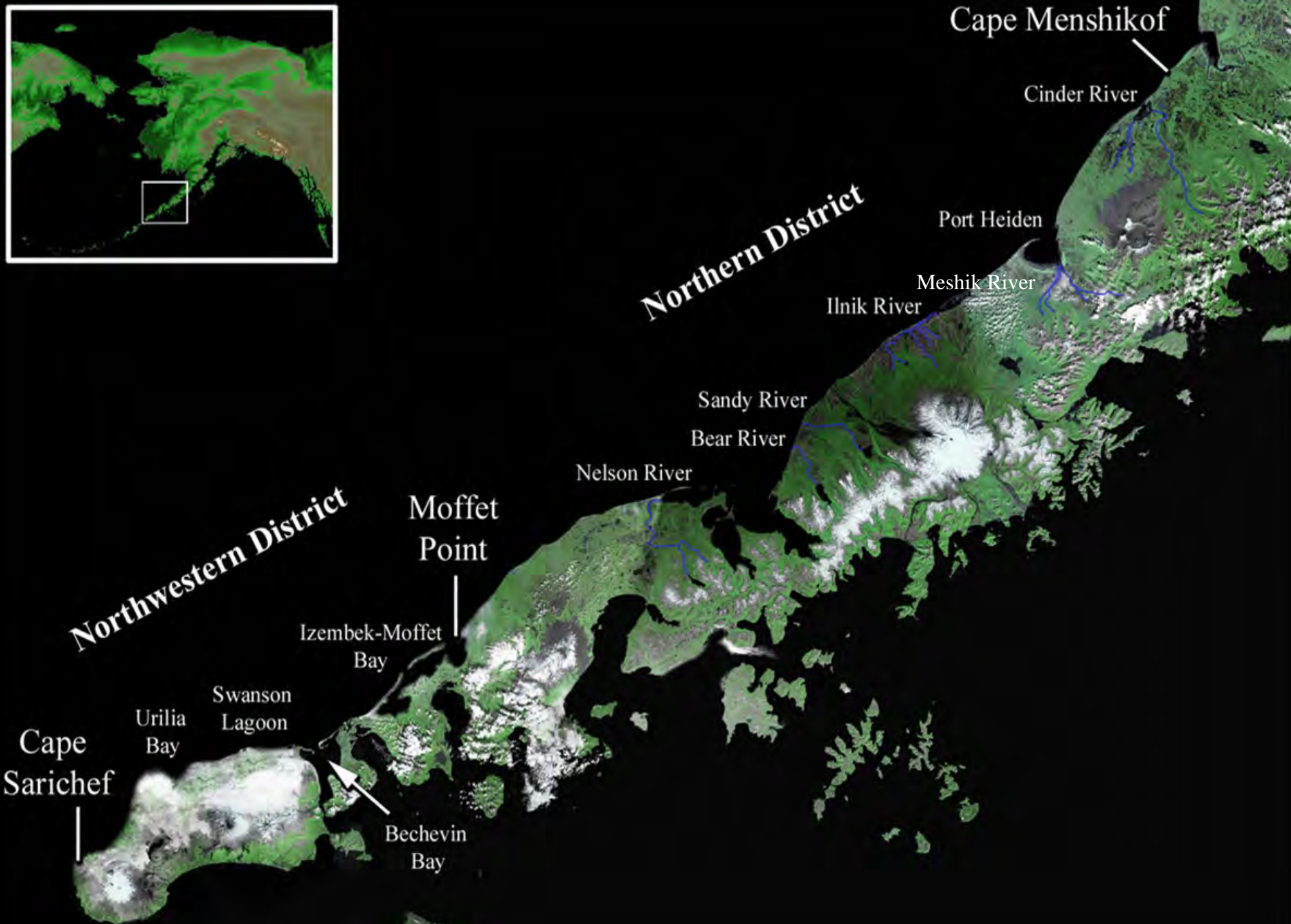
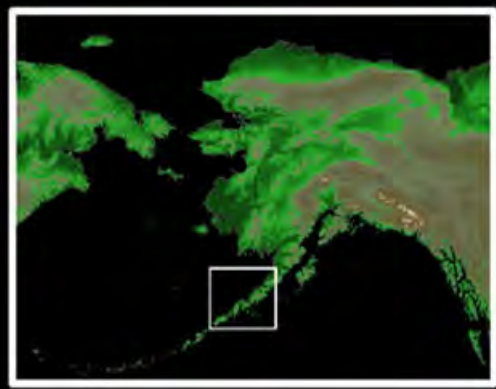
February 2016

Staff Comments: RC 2
Oral Report: RC 3; Tab 5

Port Moller

Presentation Objectives

- Describe North Alaska Peninsula geographic areas and fisheries
- Brief description of the management of the Bear River, Three Hills, Ilnik, and Outer Port Heiden sections
- Discuss North Peninsula effort levels, harvest, and escapement data
- Overview of proposals and issues



Cape Menchikof

Cinder River

Port Heiden

Meshik River

Ilnik River

Sandy River

Bear River

Nelson River

Moffet Point

Izembek-Moffet Bay

Swanson Lagoon

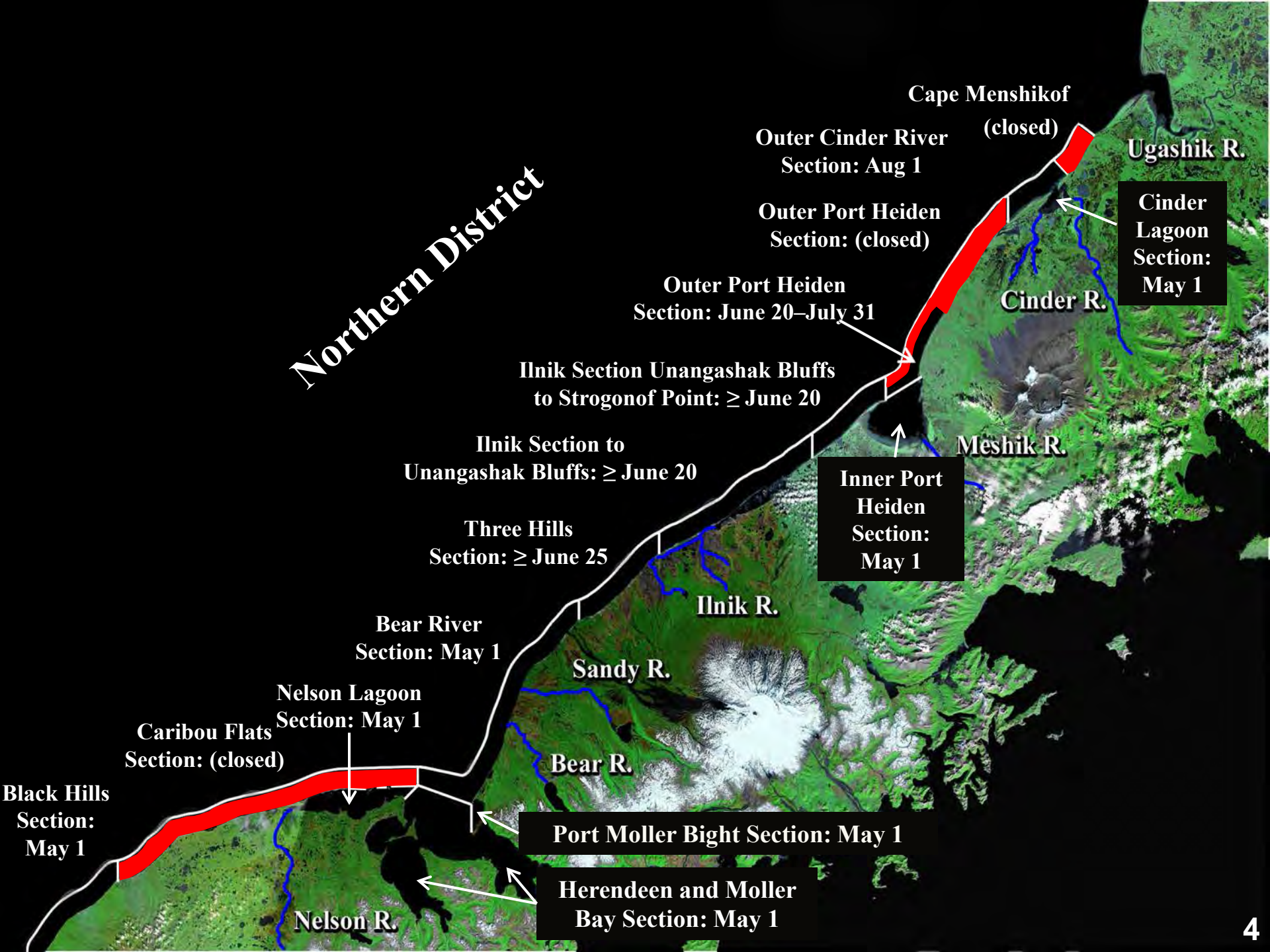
Urilia Bay

Cape Sarichef

Bechevin Bay

Northern District

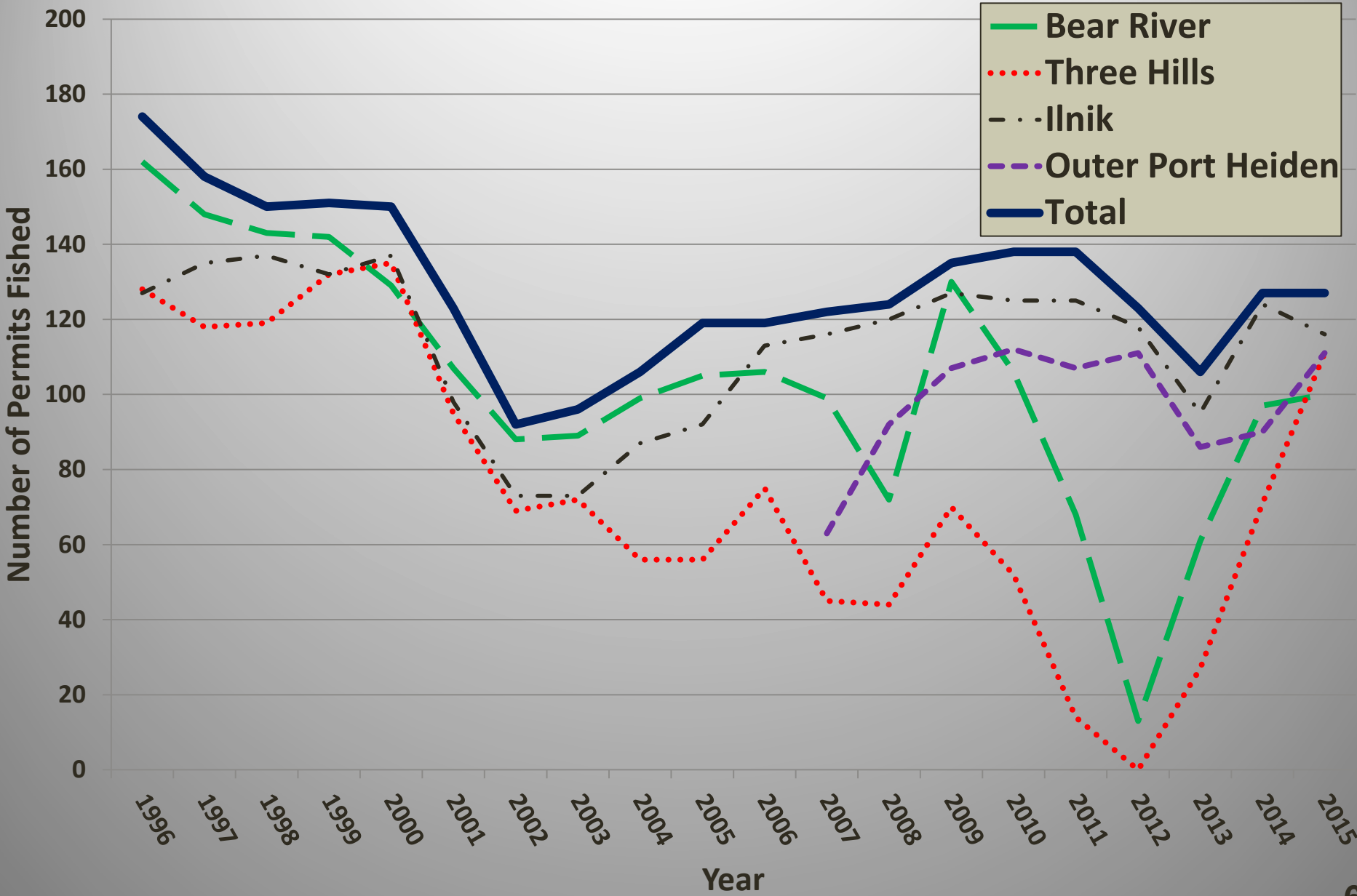
Northwestern District



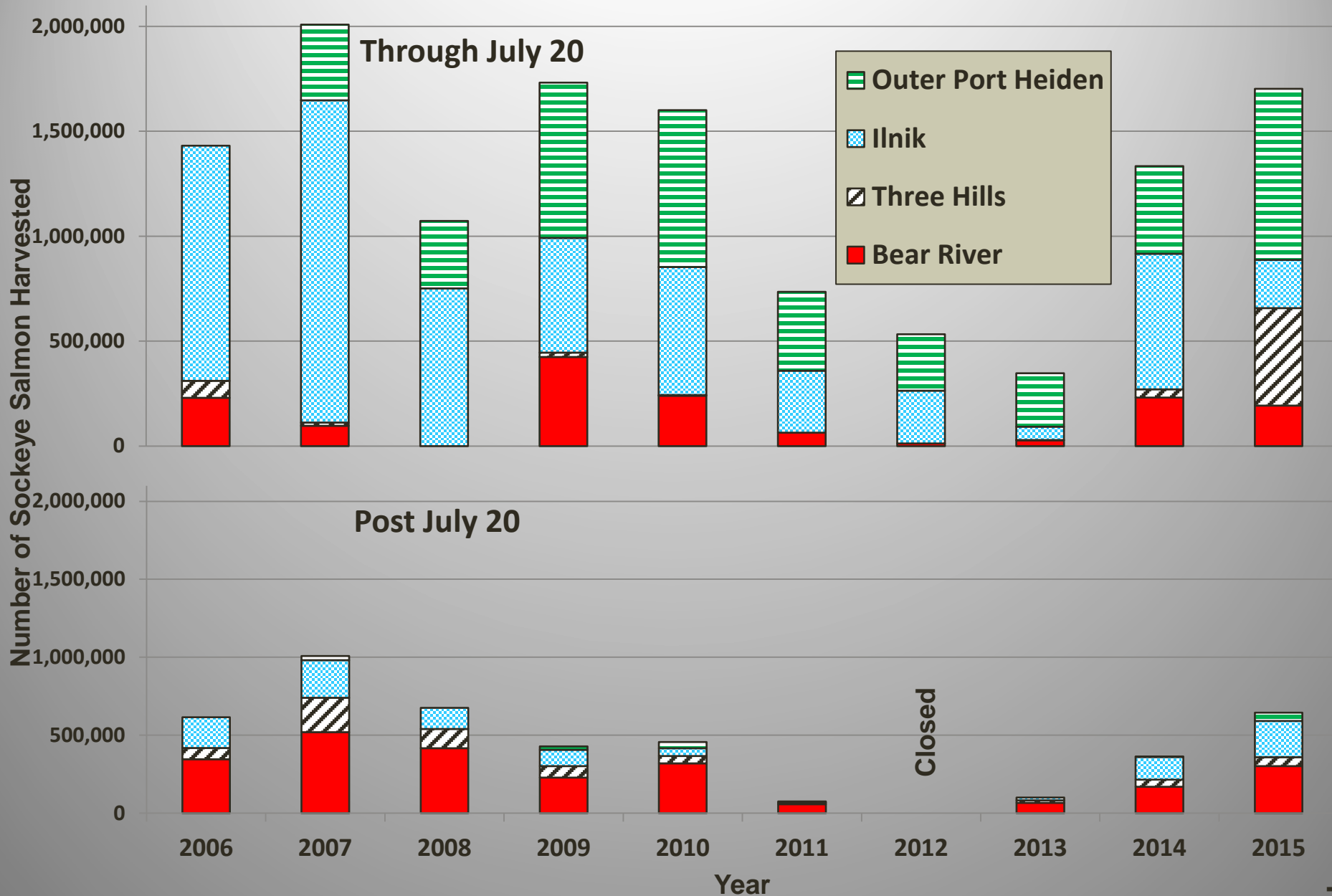
Sockeye Salmon Stocks Managed in Five Areas of the Northern District

Section	Through July 20	Post July 20
Bear River	Bear River, Sandy River	Bear River, Sandy River
Three Hills	Bear River, Sandy River, Ilnik River	Bear River, Sandy River
Ilnik SW of Unangashak Bluffs	Ilnik River, Ugashik River	Bear River (through August 15 only)
Ilnik NE of Unangashak Bluffs	Ilnik River, Meshik River, Ugashik River	Bear River (through August 15 only)
Outer Port Heiden (June 20 – July 31)	Meshik River, Ugashik River	Meshik River

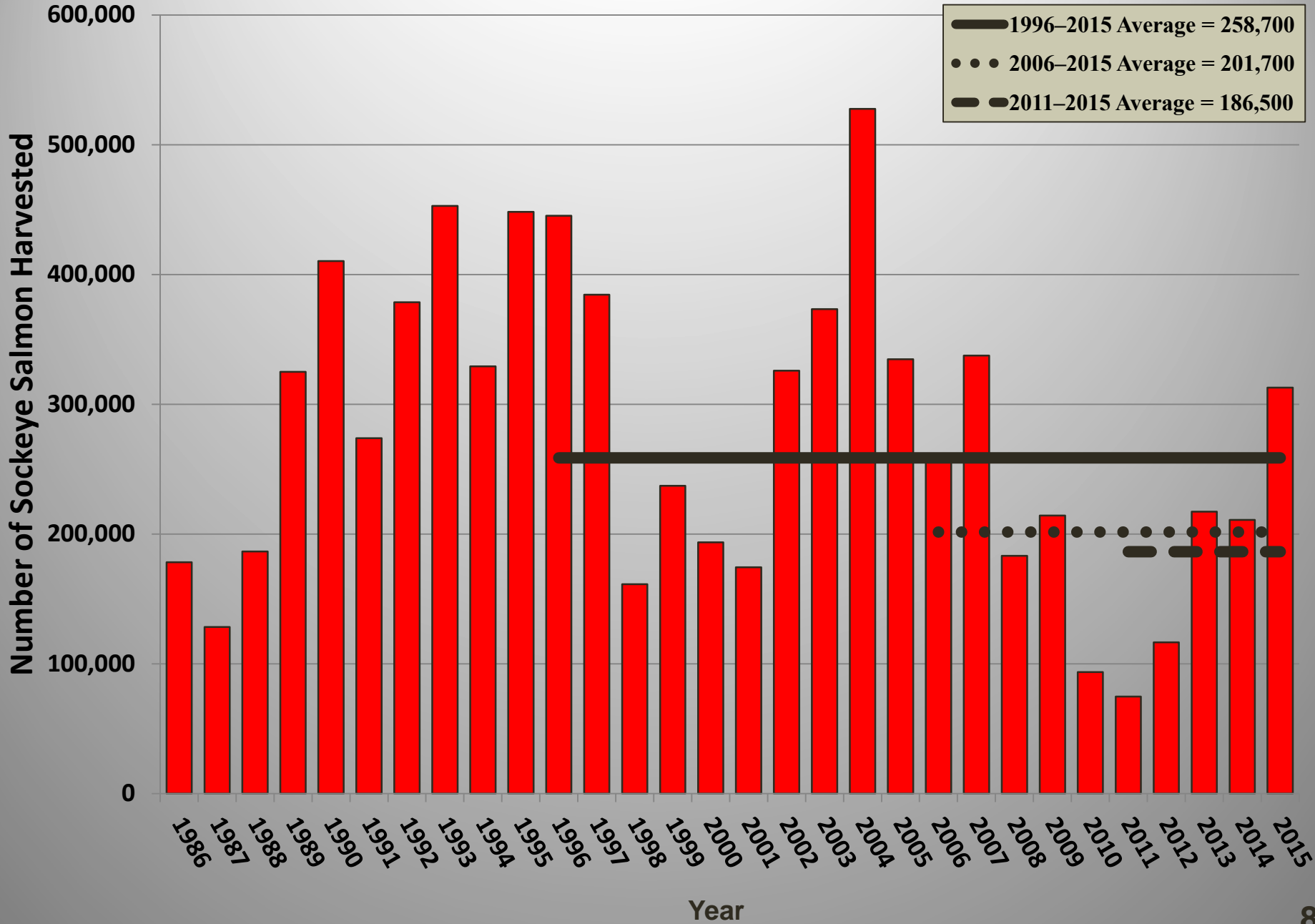
Number of permits fished in the Bear River, Three Hills, Ilnik and Outer Port Heiden sections, 1996–2015



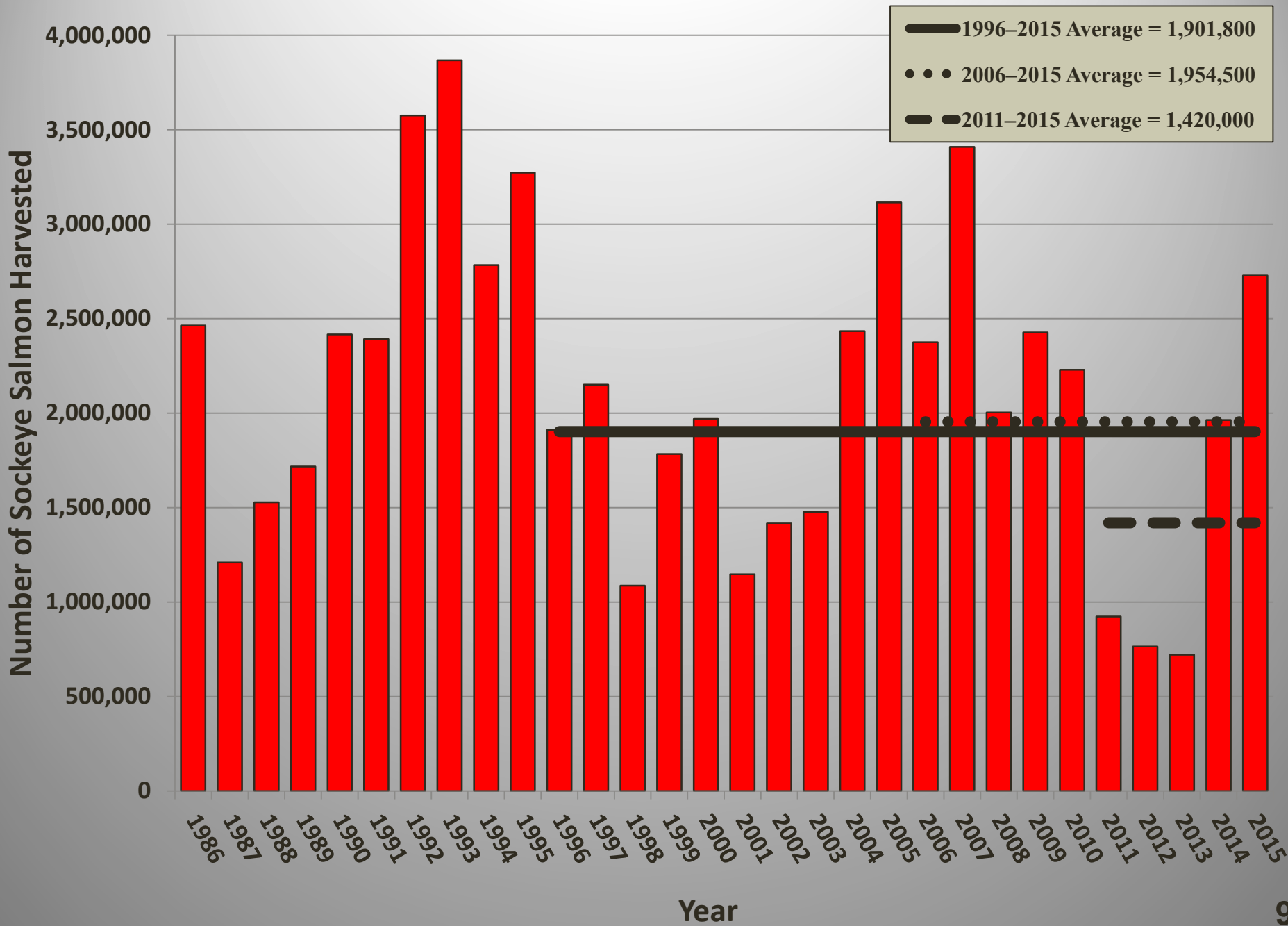
Bear River, Three Hills, Ilnik, and Outer Port Heiden Sections Harvest, Through and Post July 20, 2006–2015



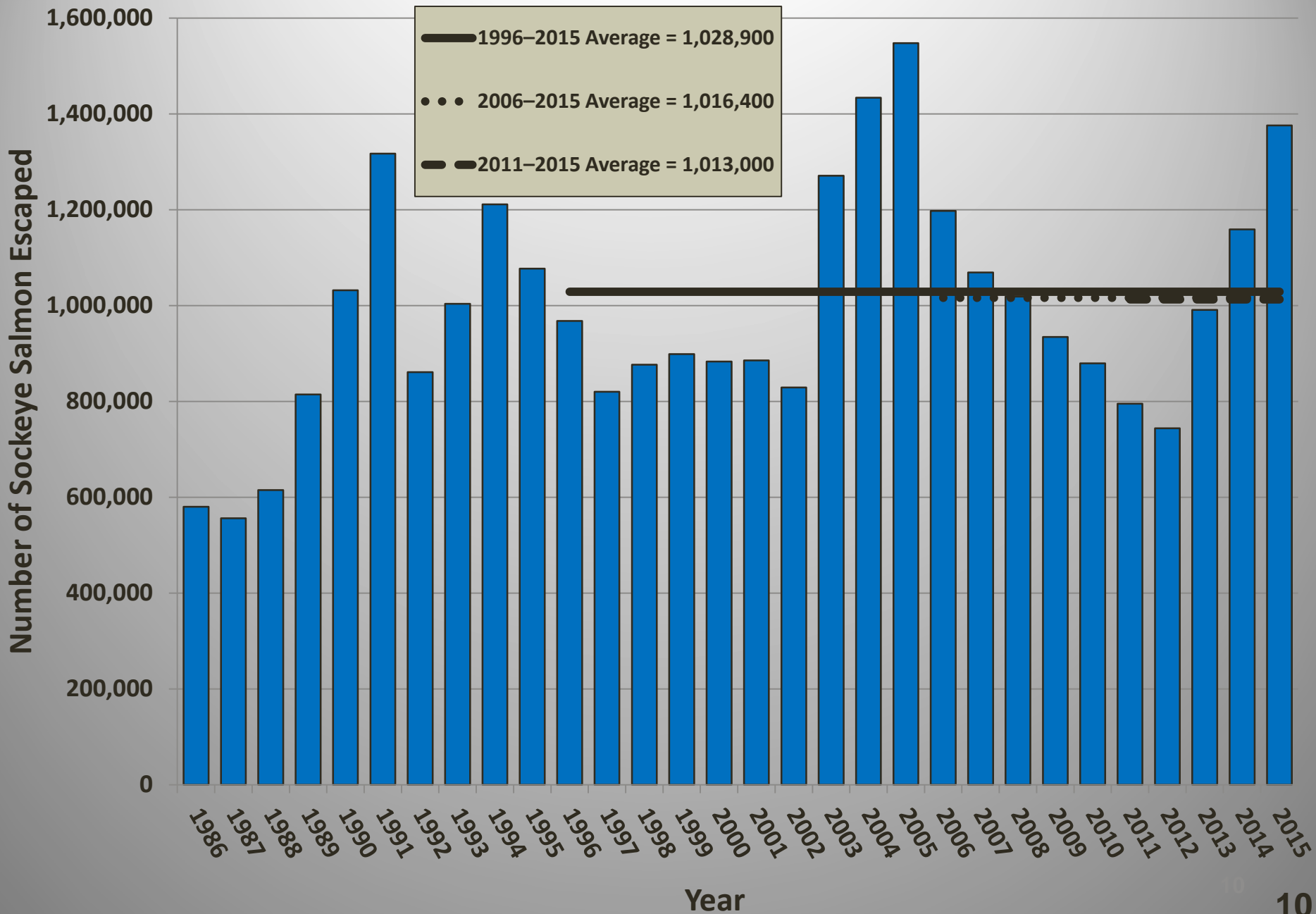
Nelson Lagoon Sockeye Salmon Harvest, 1986–2015



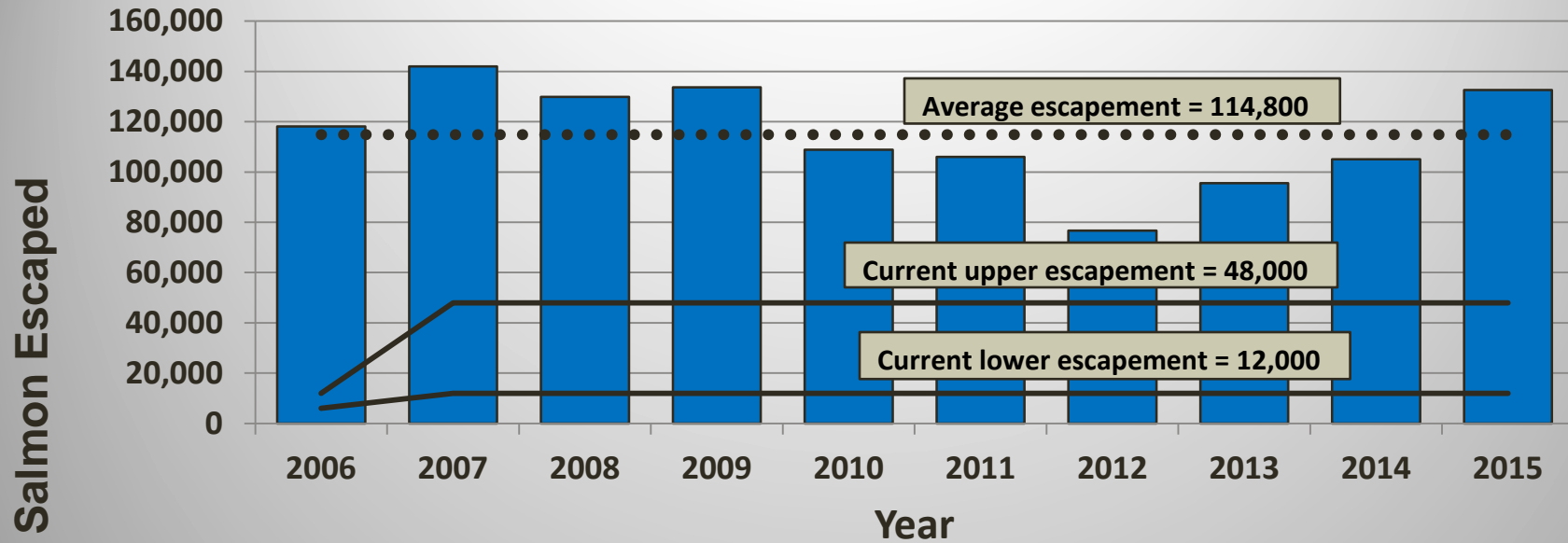
North Peninsula Sockeye Salmon Harvest, 1986–2015



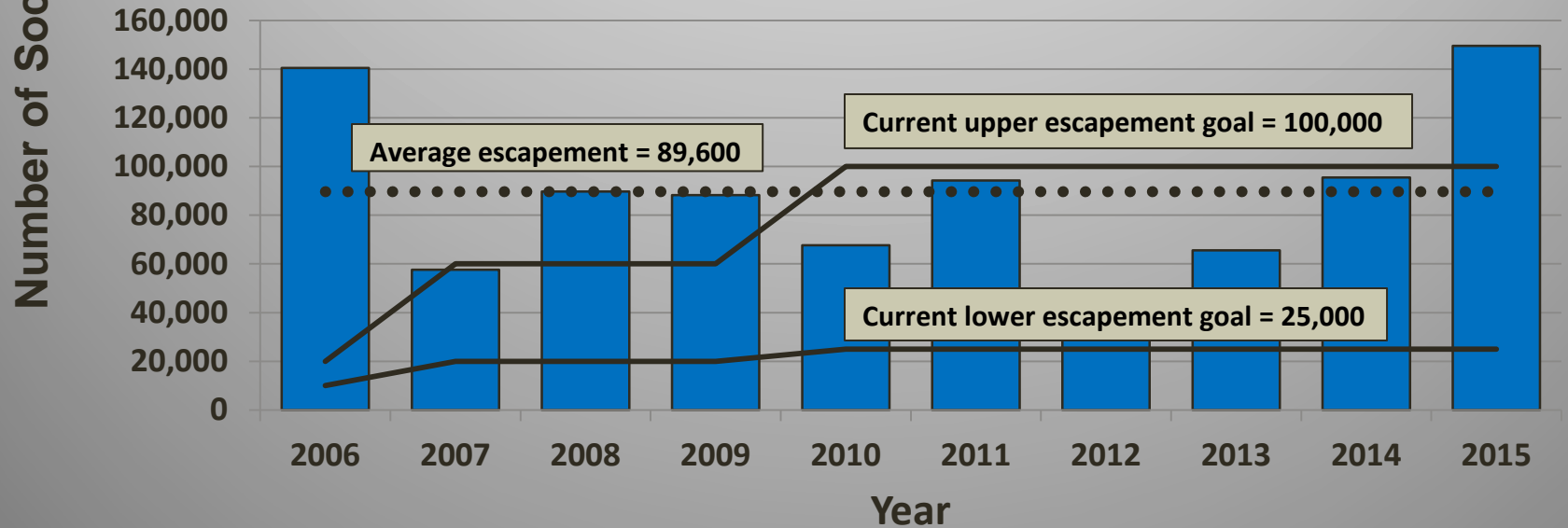
North Peninsula Sockeye Salmon Escapement, 1986–2015



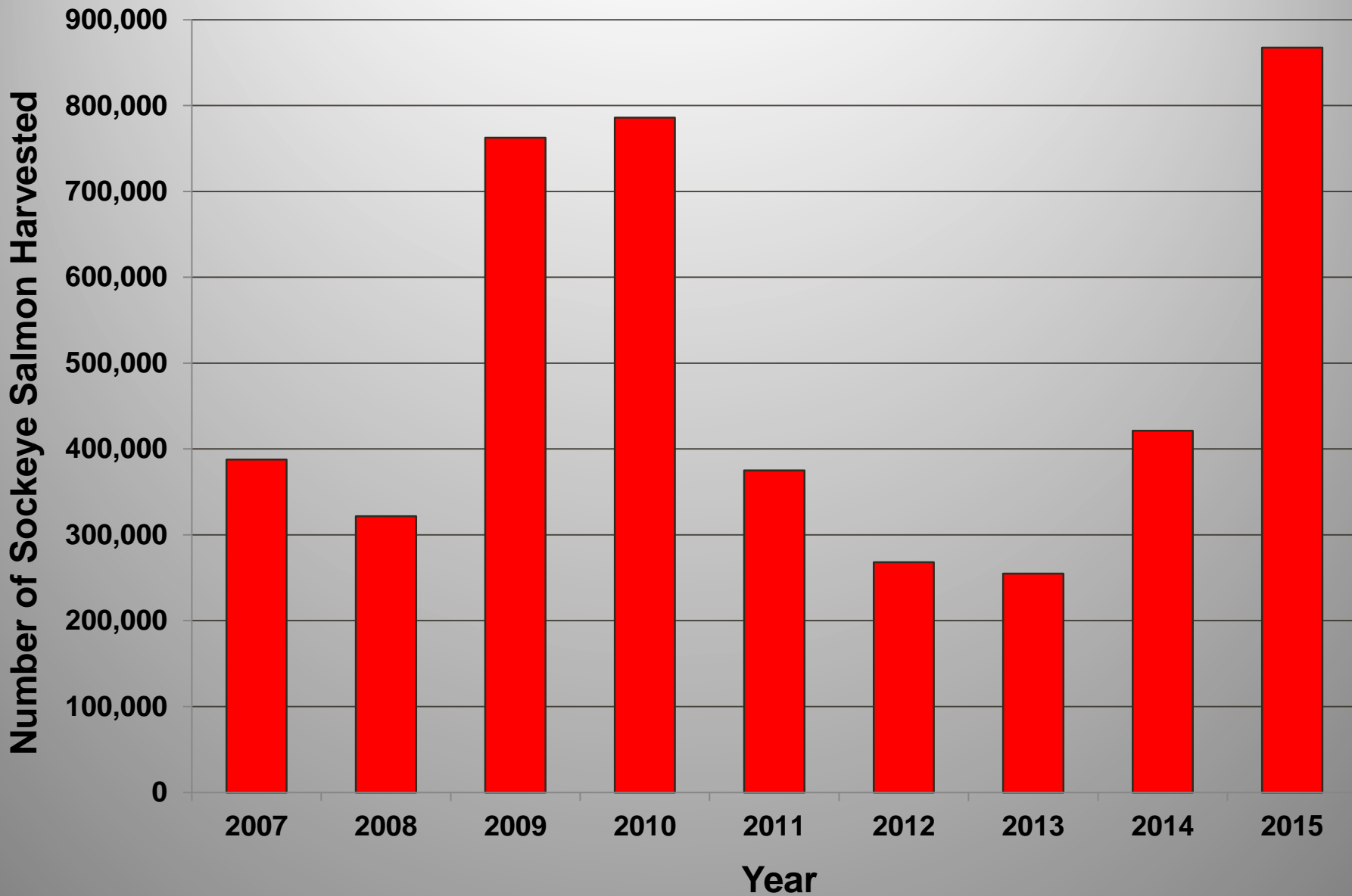
Cinder River Sockeye Salmon Escapement, 2006–2015



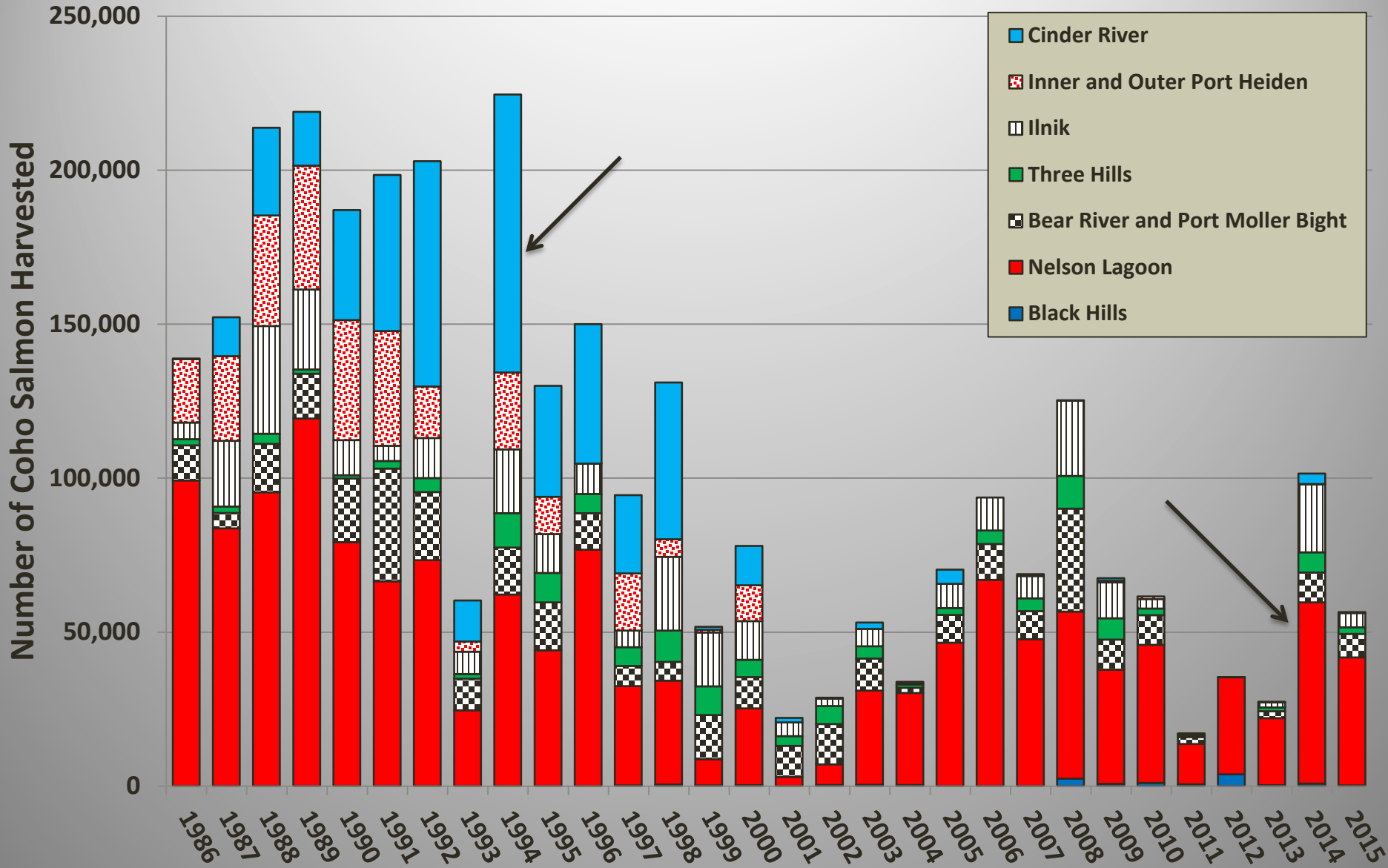
Meshik River Sockeye Salmon Escapement, 2006–2015



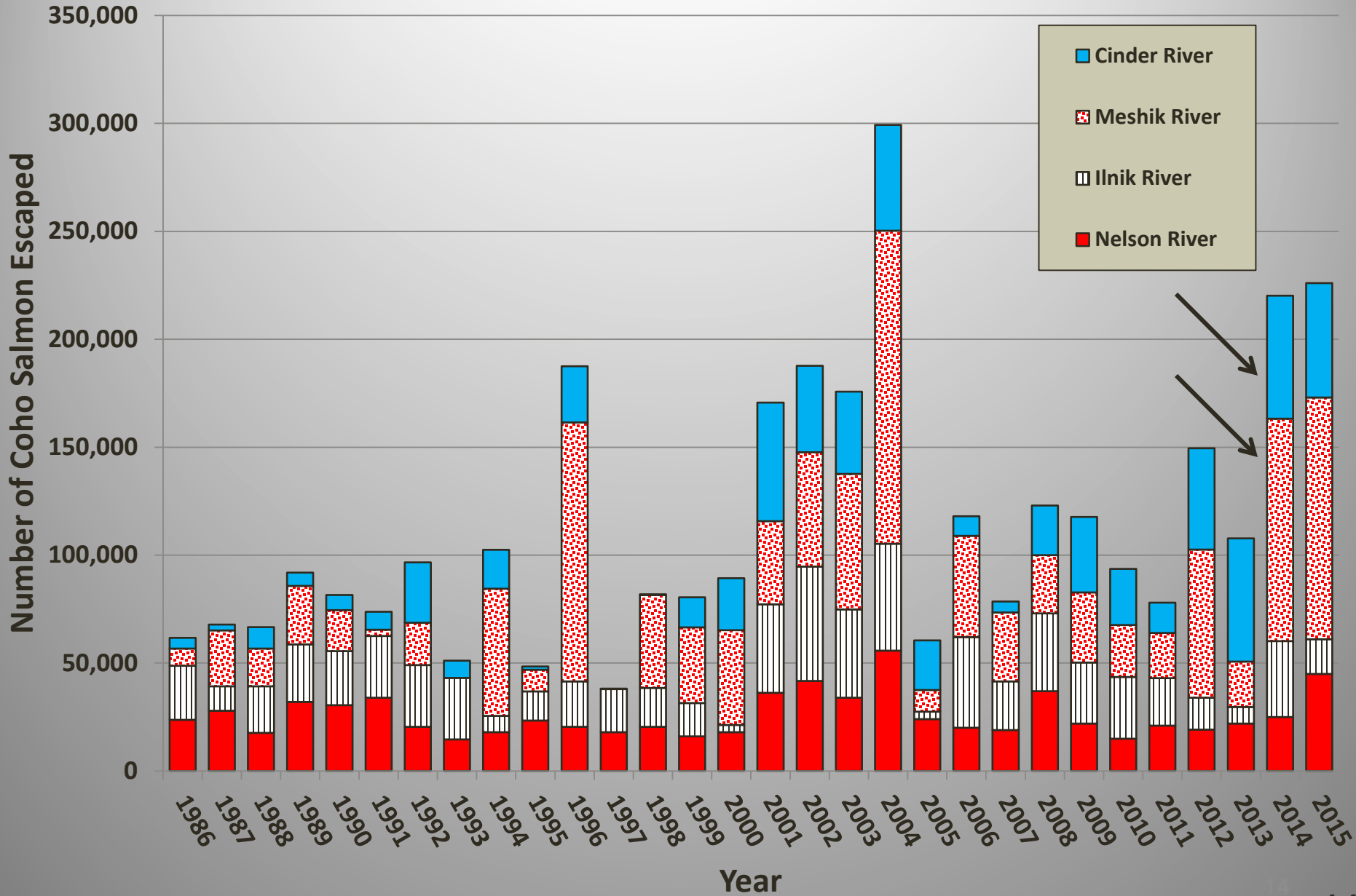
Outer Port Heiden Section Commercial Sockeye Salmon Harvest, 2007–2015



Northern District Coho Salmon Harvest, 1986–2015



Northern District Coho Salmon Escapement, 1986–2015



North Peninsula Proposals

- **Redefine Management Boundary of Bristol Bay and Alaska Peninsula Management areas**

Proposals 22, 23, and 24: These proposals have already been heard at the Bristol Bay Board of Fisheries meeting and will be deliberated at this meeting



Area M and Area T overlap

★ Pilot Point
Ugashik R.

Cape Menshikof

Cinder R. Section
(Closed)

Mud Cr.
Cinder R.

Outer Port Heiden Section
(Closed)

Strogonof Point
★ Port Heiden

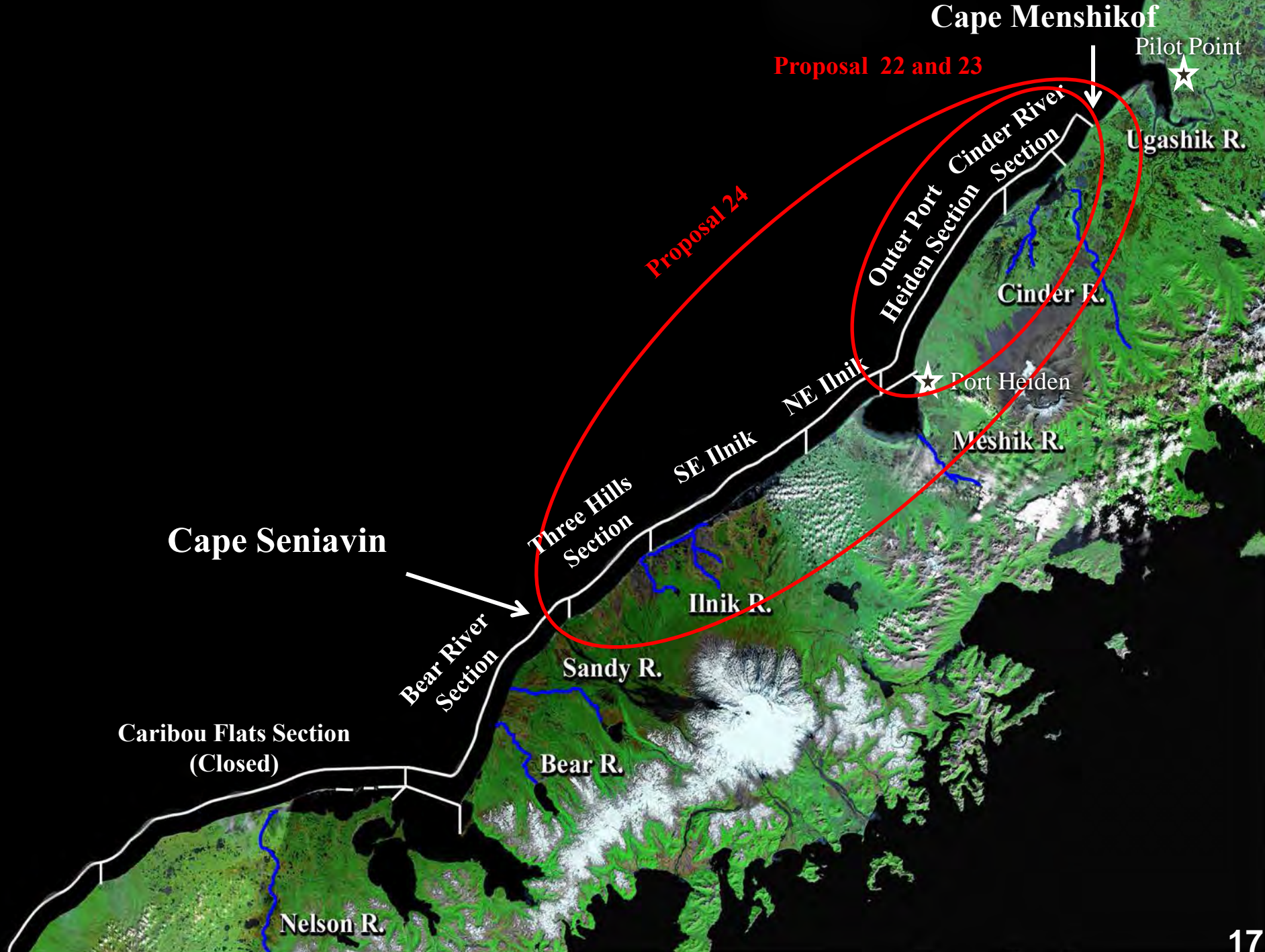
Inner Port Heiden Section

IlNIK Section

Unangashak Bluffs

Meshik R.

IlNIK Lagoon



North Peninsula Proposals

- **Rolling Closures in the Bear River, Three Hills, and Ilnik sections**

Proposals 147, 158, 159, 160, 161, and 162

- **Modifications to Fishing Periods**

Proposals 148, 149, and 157

- **Closures**

Proposals 155 and 156

- **Changes to Northern District Salmon Fisheries Management Plan**

Proposals 151, 152, 153, 154, and 166

- **Gear and Area Issues**

Proposals 150, 163, 164, and 165

- **Description of Sections and Closed Waters**

Proposals 169, 170, and 171

- **Northwestern District Issues**

Proposals 167 and 168

A close-up, low-angle shot of several sockeye salmon swimming through a wooden weir. The fish are silvery with a hint of blue on their sides. The weir is made of vertical wooden slats, and the water is clear and bright. The fish are positioned at various heights, some near the top and some lower down, as they navigate the structure. The lighting is bright, creating a shimmering effect on the water and the fish's scales.

The End

Sockeye salmon swimming through the Bear River weir