

South Alaska Peninsula Post-June Salmon Fishery

by
Lisa C. Fox



Report to the Alaska Board of Fisheries
February 2016

Oral Report: RC 3; Tab 3

Staff Comments: RC 2

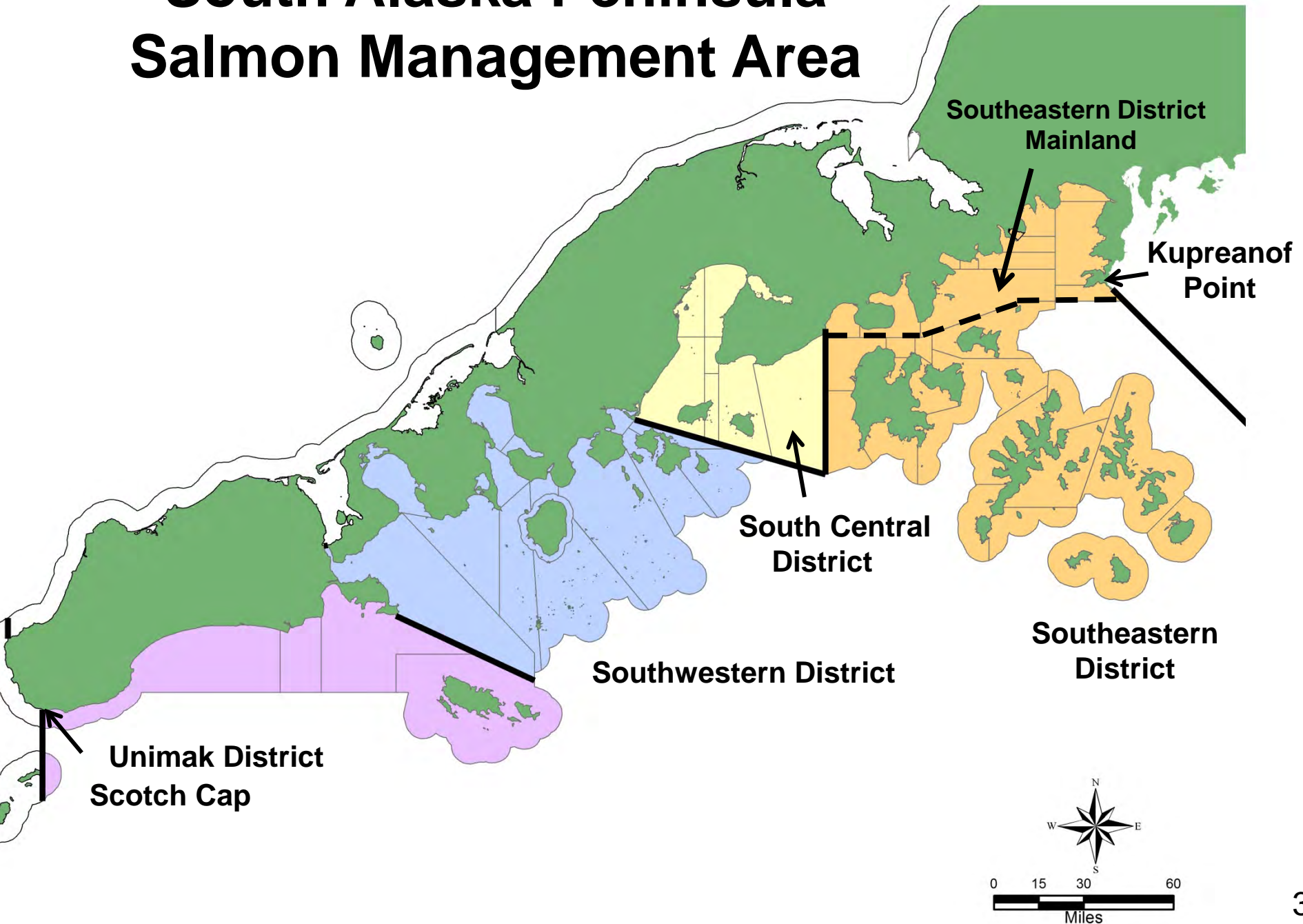
Written Report: Supplemental Materials

Post-June Salmon Fishery

Topics to be covered:

1. Fishery location
2. Seine test fishery
3. Post-June fishing periods and terminal harvest areas
4. Historical harvest and escapement by species
5. 2013–2015 season summaries
6. Post-June proposals and issues

South Alaska Peninsula Salmon Management Area



Post-June Seine Test Fishery

- Shumagin Islands Section immature salmon test fishery

Post-June Seine Test Fishery



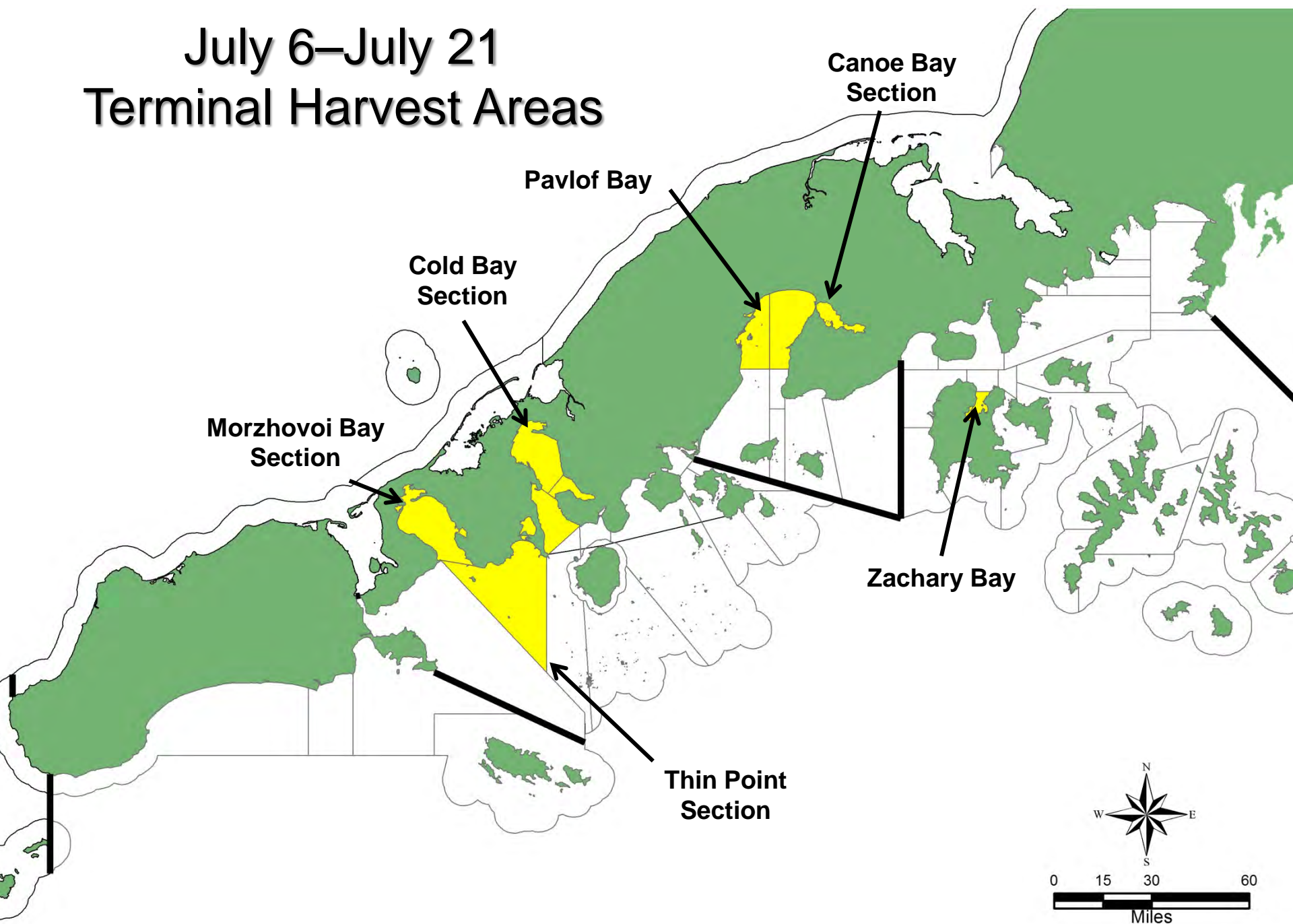
Post-June Seine Test Fishery

- Shumagin Islands Section immature salmon test fishery
- “Immature salmon, per set” = number of immature king, sockeye, coho, and chum salmon gilled in the seine web (5 AAC 09.366(i))
- > 100 immature salmon present, seine fishery closed
 - set gillnet gear permitted
- < 100 immature salmon present, fishery may open on July 6

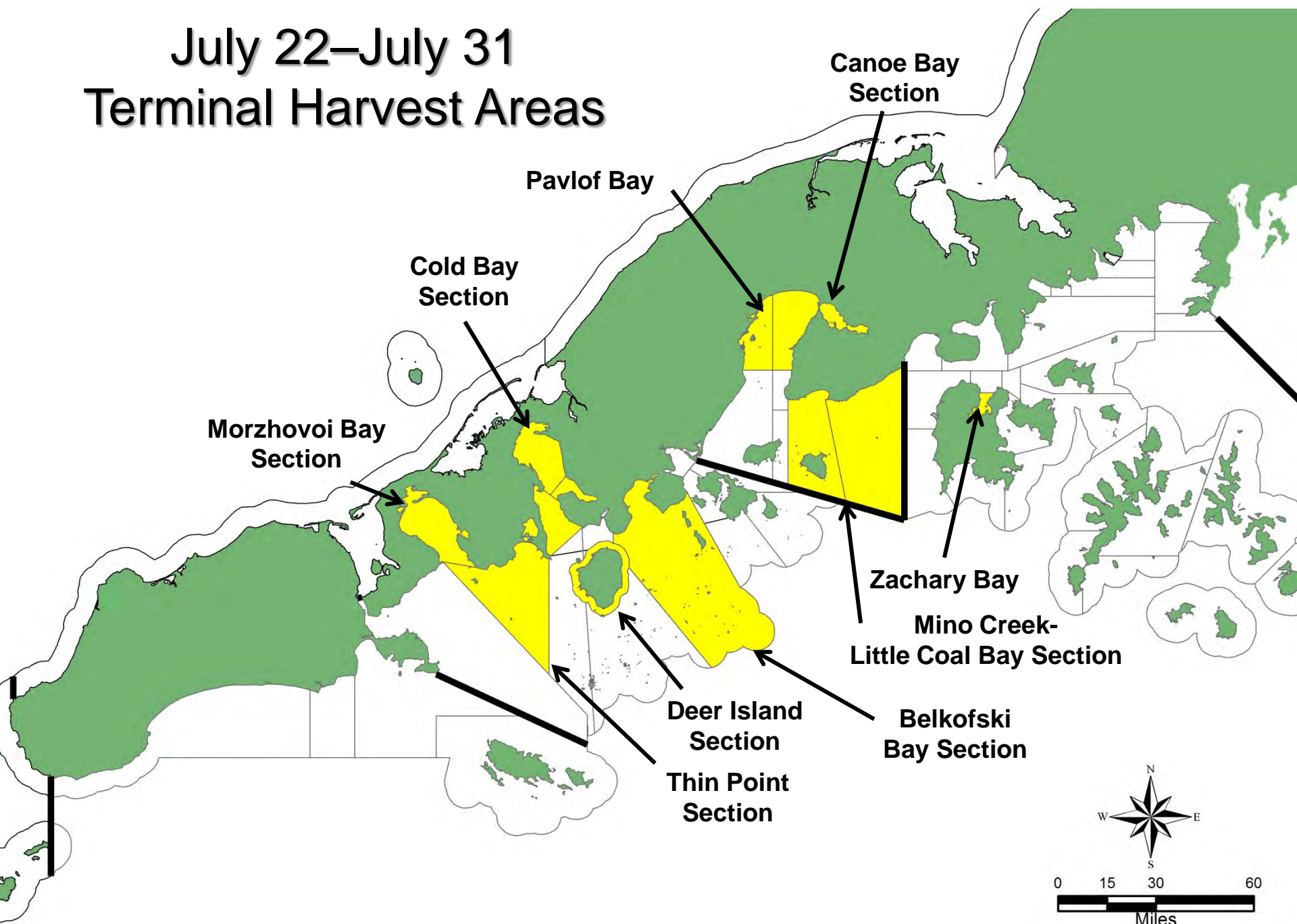
Post-June Salmon Fishery Schedule for July 2015



July 6–July 21 Terminal Harvest Areas



July 22–July 31 Terminal Harvest Areas

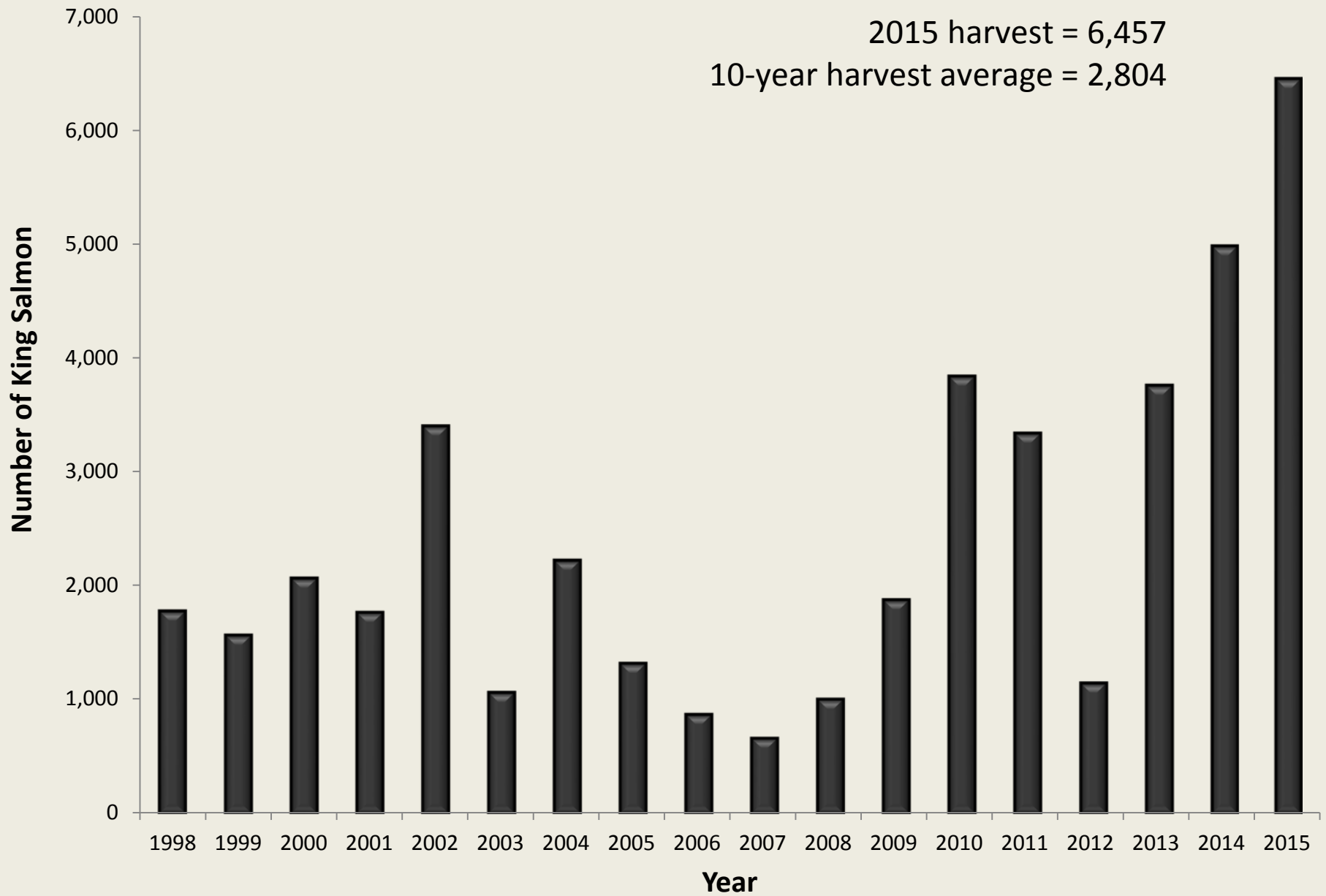


Post-June Fishing Periods

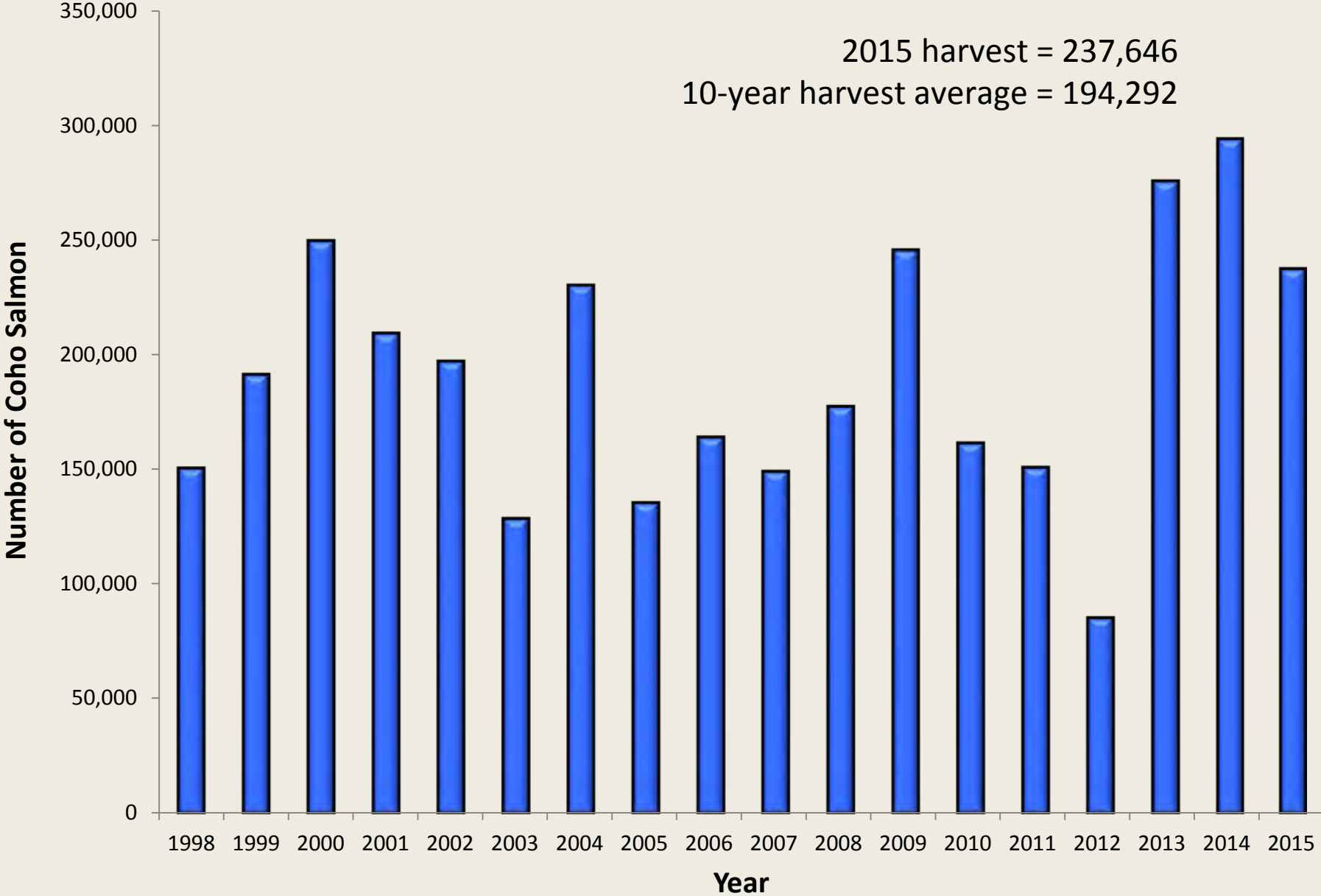
August – October

- Commercial salmon fishing periods established by emergency order from August – October
 - August = local sockeye, coho, pink, and chum salmon
 - September – October = coho salmon
 - late pink and chum salmon stocks

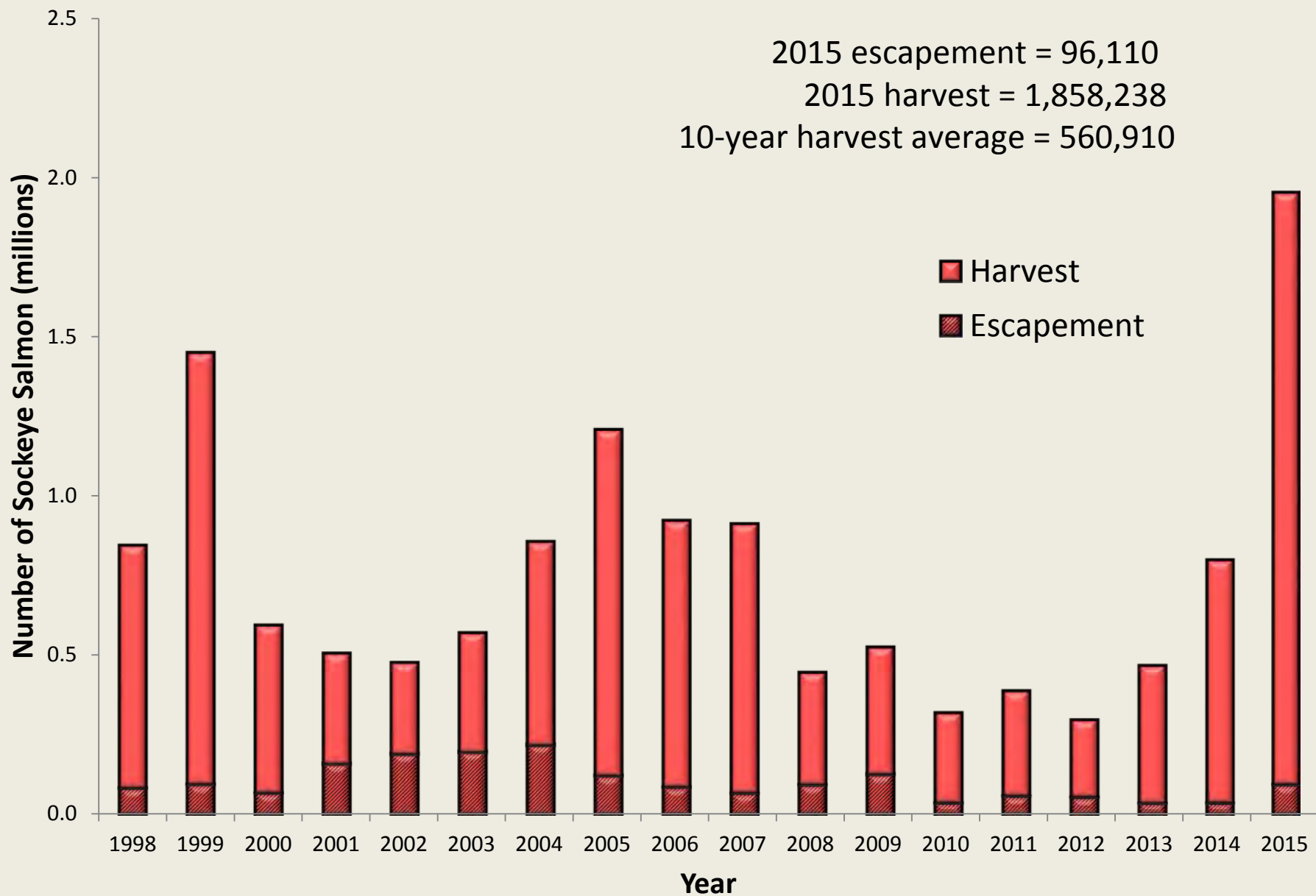
Post-June King Salmon Harvest, 1998–2015



Post-June Coho Salmon Harvest, 1998–2015

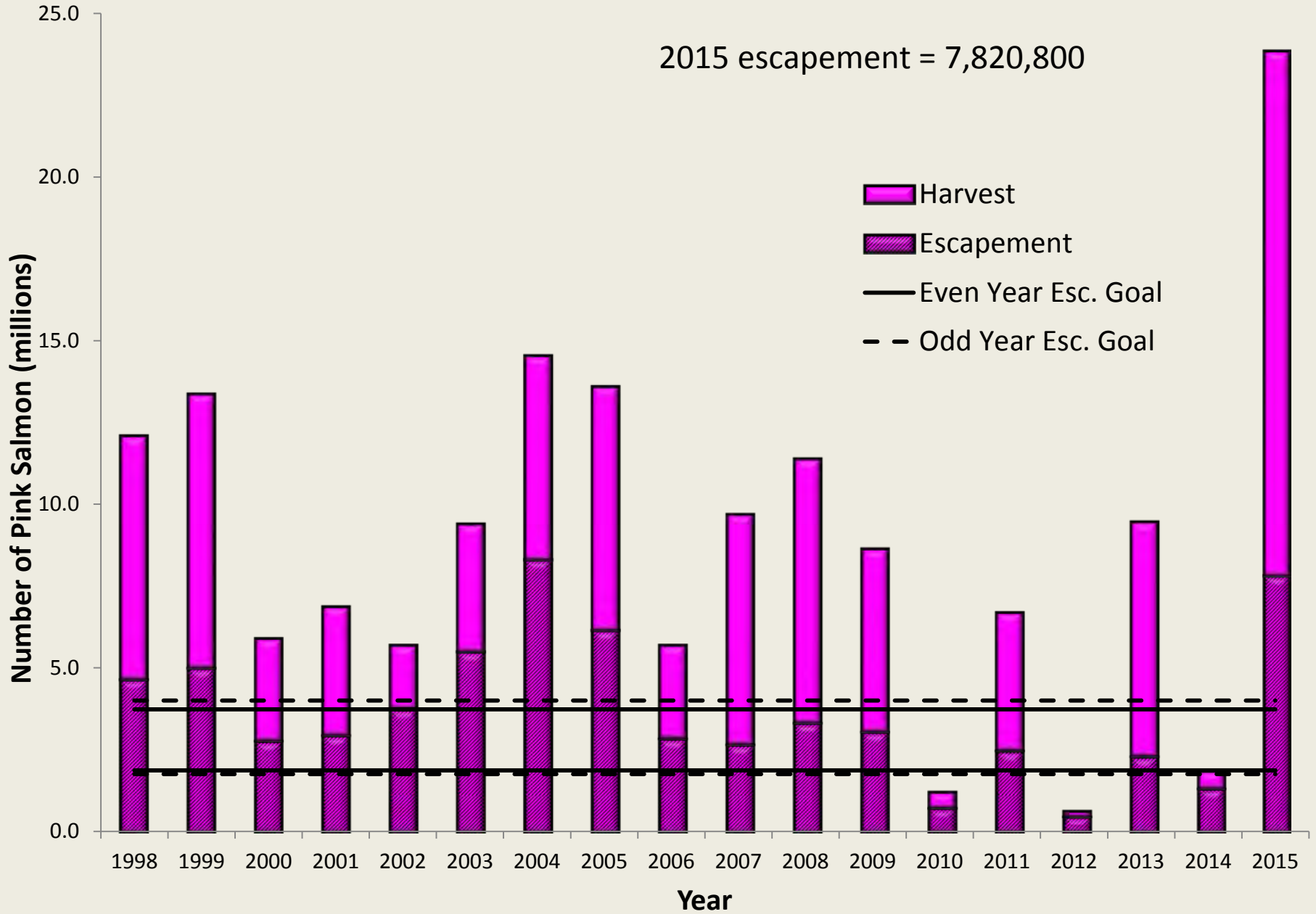


Post-June Sockeye Salmon Escapement and Harvest, 1998–2015

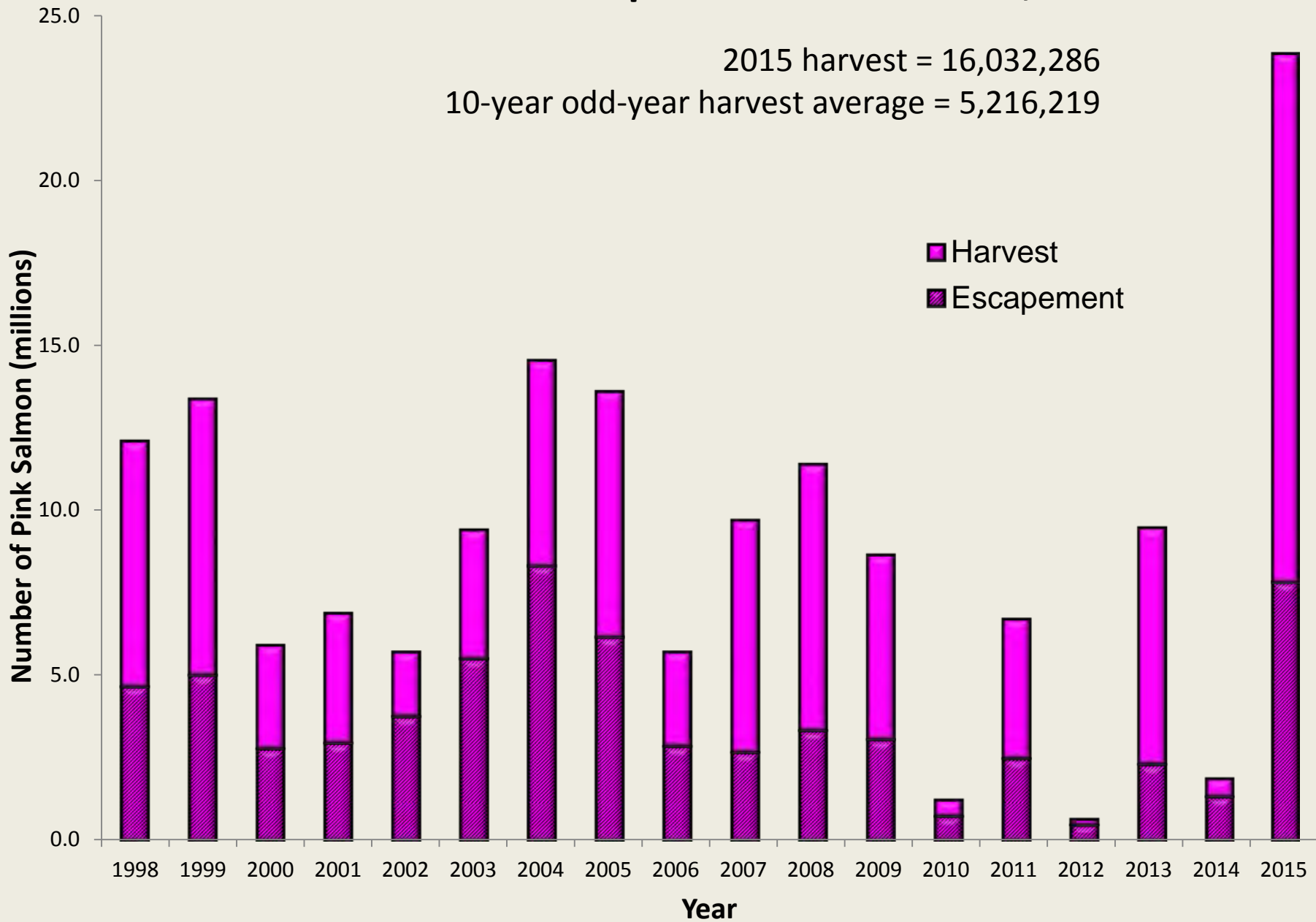


Post-June Pink Salmon Escapement and Harvest, 1998–2015

2015 escapement = 7,820,800

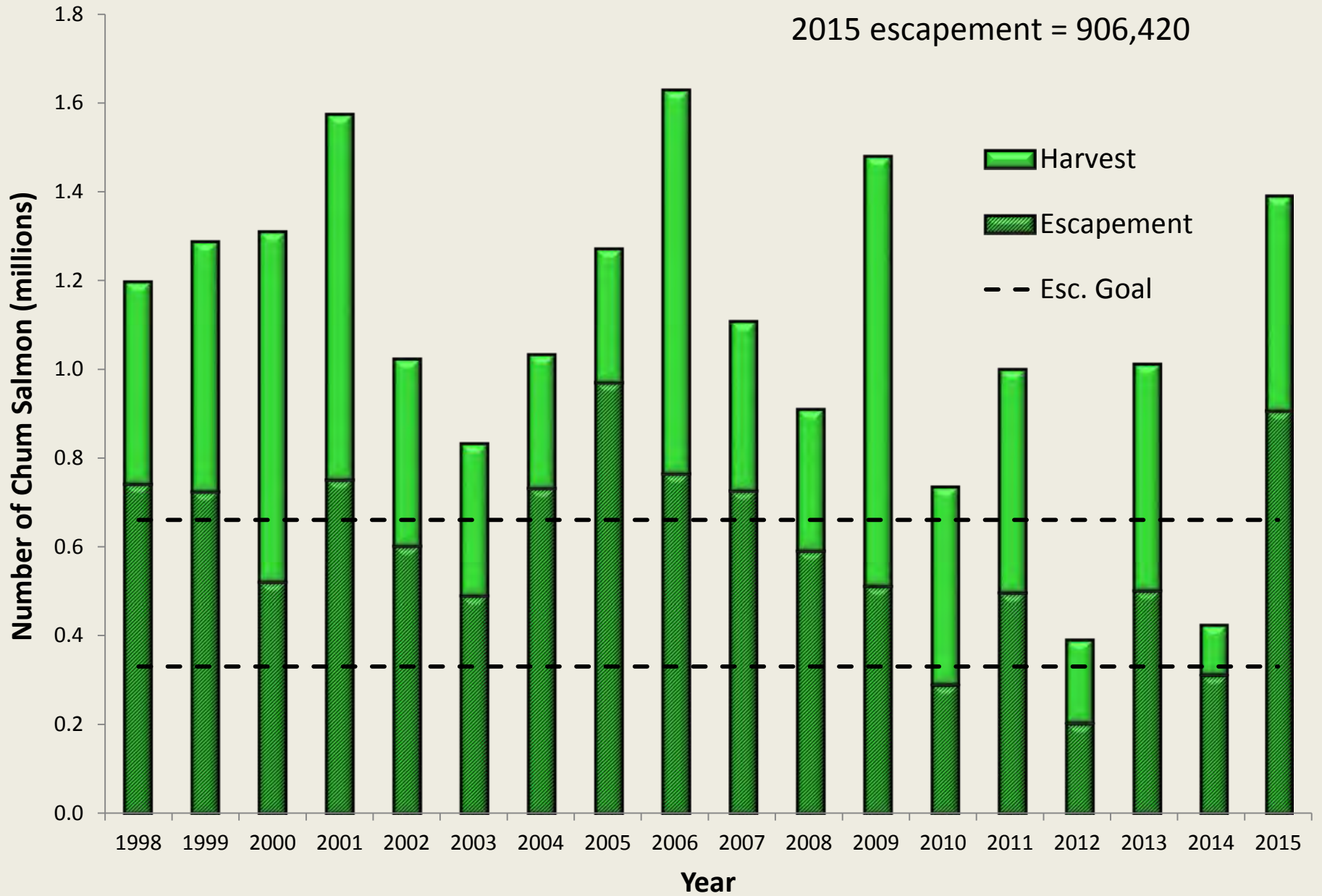


Post-June Pink Salmon Escapement and Harvest, 1998–2015

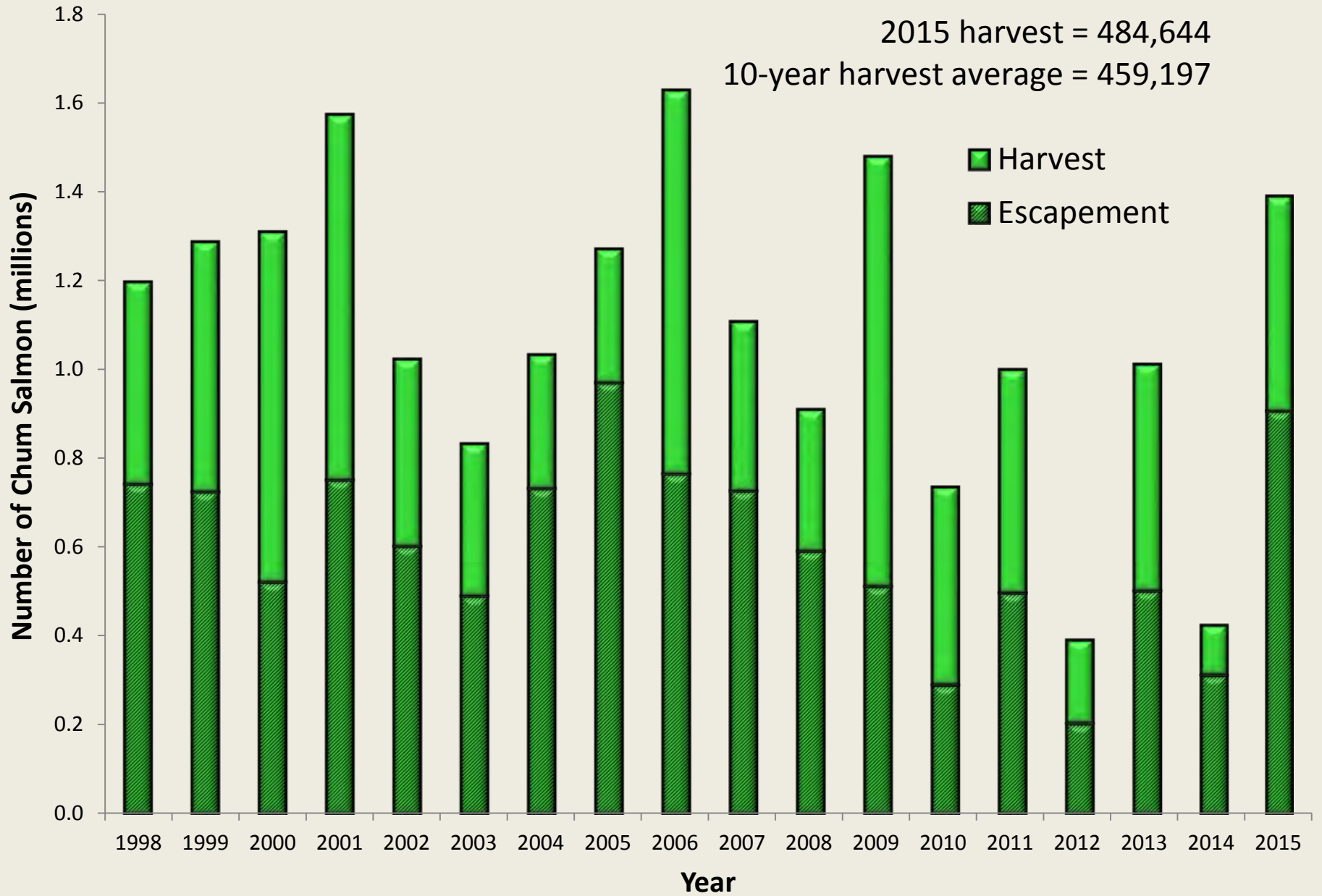


Post-June Chum Salmon Escapement and Harvest, 1998–2015

2015 escapement = 906,420



Post-June Chum Salmon Escapement and Harvest, 1998–2015



Post-June Salmon Fishery 2013–2015 Season Summaries

Year	Number of Salmon Harvested				
	King	Sockeye	Coho	Pink	Chum
2013	3,767	436,059	275,885	7,162,950	510,111
2014	4,990	767,167	294,341	540,949	111,788
2015	6,457	1,858,238	237,646	16,032,286	484,644
Average	5,071	1,020,488	269,291	7,912,062	368,848

Average participation by gear type:

Purse seine = 54 of 121
 Drift gillnet = 57 of 162
 Set gillnet = 58 of 116

Average percent of harvest:

Purse seine = 91%
 Drift gillnet = 3%
 Set gillnet = 6%

Average total annual exvessel value = \$ 12,515,366

Post-June Proposals

Five proposals for the Post-June Salmon Fishery

- Establish Dolgoi Island Section and Dolgoi Island Section Salmon Fisheries Management Plan
Proposals 185 and 186
- Modify *Post-June Salmon Management Plan* to manage by gear type
Proposal 187
- Create fishing periods in Unalaska District of the Aleutian Islands Area for pinks concurrent with last two periods July
Proposal 188
- Repeal minimum mesh size for drift gillnet gear in *Post-June Salmon Management Plan*
Proposal 191

One proposal for subsistence fishing

- Clarify when commercial fishing license holders may subsistence fish for salmon in the Alaska Peninsula Area
Proposal 197

