

ADF&G ORAL STAFF PRESENTATION TO ALASKA BOARD OF FISHERIES

Southeast Alaska Enhanced Salmon Allocation Update
RC3 Tab 8



Flip Pryor
Region 1 Regional Resource Development Biologist

Southeast Alaska Enhanced Salmon Allocation Presentation Outline

- A brief history of the development of the allocation plan.
- A brief description of Southeast Alaska Area Enhanced Salmon Allocation Management Plan [5 AAC 33.364].
- Current Status of the Enhanced Salmon Allocation and a brief explanation of some of the complexities of balancing allocation.
- Joint Southeast Regional Planning Team written comments.

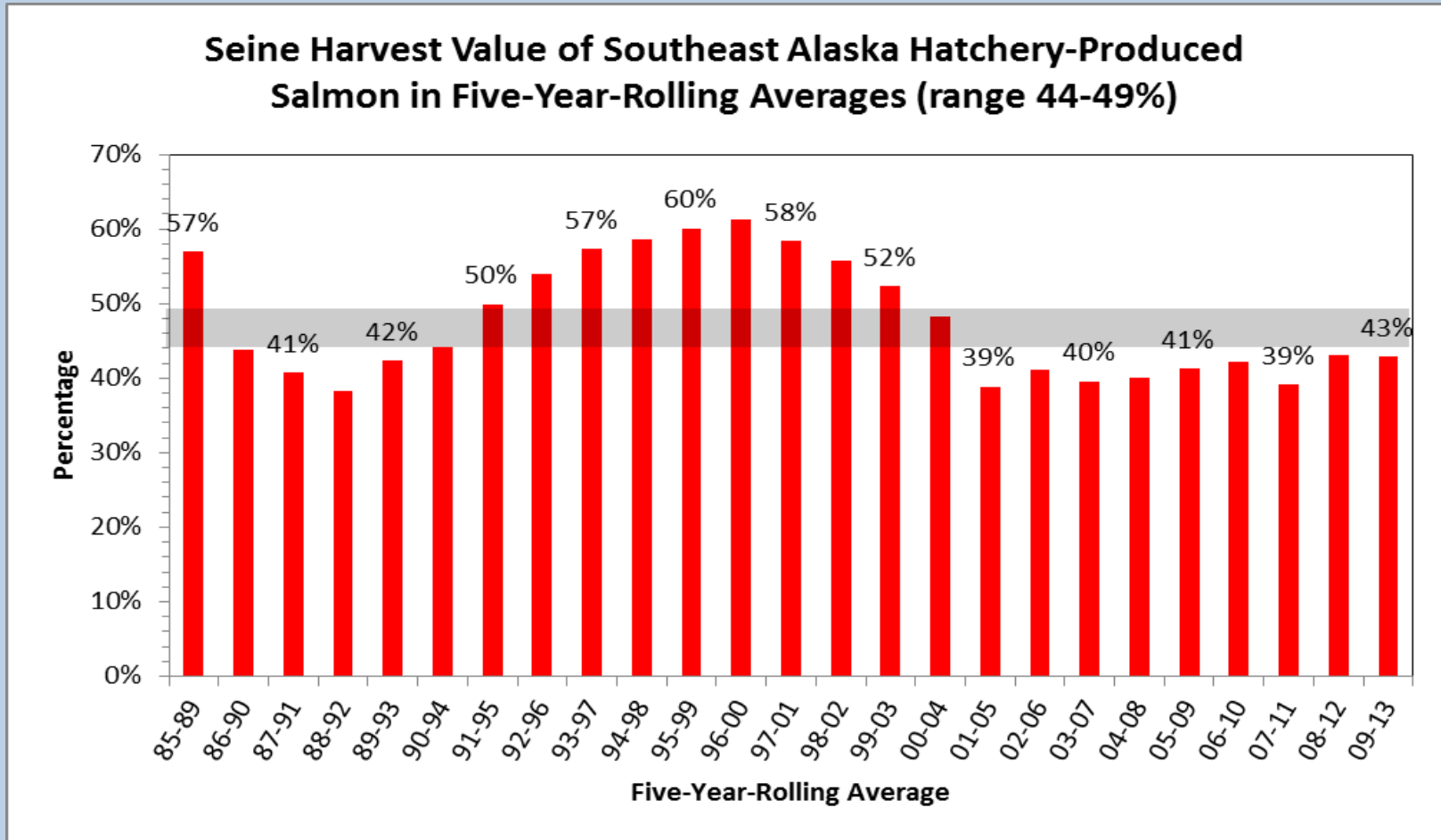
Brief History of the Enhanced Salmon Allocation Management Plan

- 1991- Numerous proposals were presented to the Board regarding the benefit commercial fisherman receive from hatchery-produced salmon, especially related to the 3% salmon enhancement tax.
- Board requested NSRAA and SSRAA to coordinate and develop a southeast wide allocation plan for all hatchery-produced salmon.
- Southeast Allocation Task Force was formed and a plan was developed using harvest values from 1985–1990 as calculated by CFEC.
- 1994- Board approved the plan which is now regulation 5 AAC 33.364.
- 1995- In accordance with 5 AAC 33.364, the Joint RPT shall make annual recommendations to the commissioner on hatchery production changes to comply with allocation plans (5 AAC 40.345).

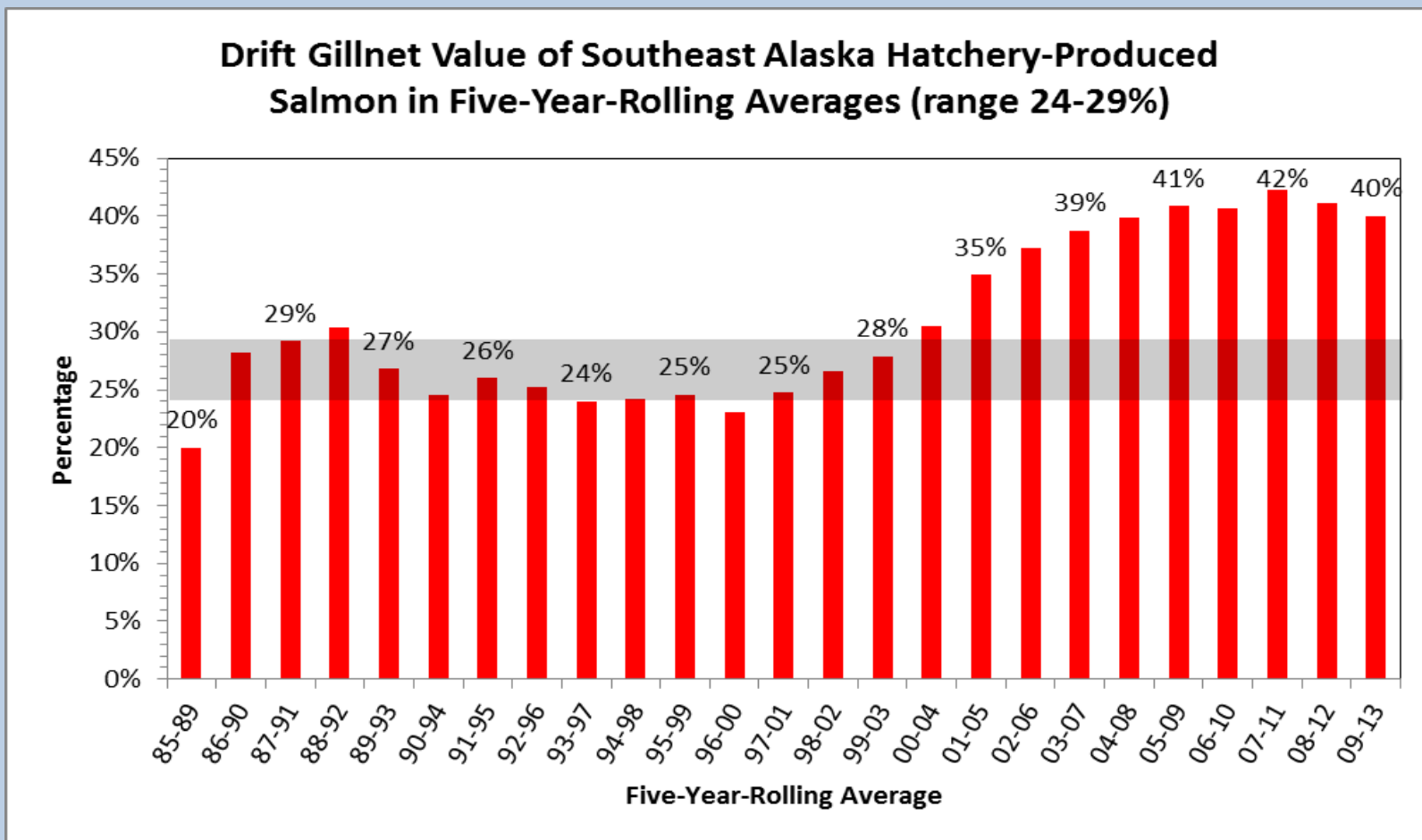
Southeastern Alaska Area Enhanced Salmon Allocation Management Plan

- “Provide a fair and reasonable distribution of the harvest of salmon from enhancement projects among seine, troll and drift gillnet commercial fisheries and to reduce conflicts among these users.”
- The Board established the following value allocation guidelines:
 - Seine – 44 to 49%
 - Hand and Power Troll – 27 to 32%
 - Drift Gillnet – 24 to 29%.
- If the value of the harvest by a gear group falls outside this range for three consecutive years (evaluated as five-year moving averages), the Board will, in its discretion, adjust fisheries within special harvest areas to bring the gear group within its allocation percentage.
- The department may not make inseason adjustments or changes to management in or out of the special harvest areas to achieve the allocation percentages.

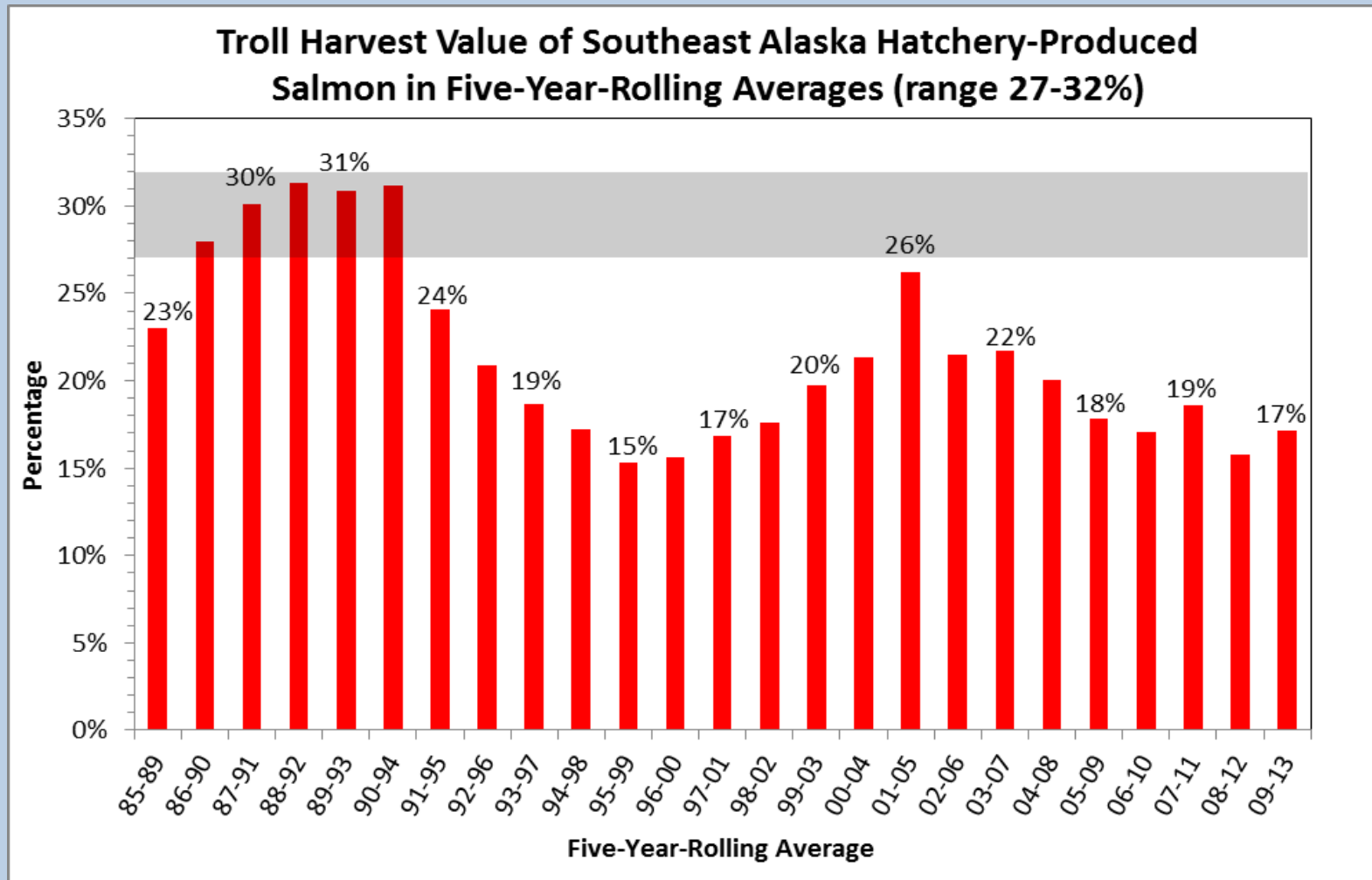
Seine harvest value has been below range for over three consecutive years



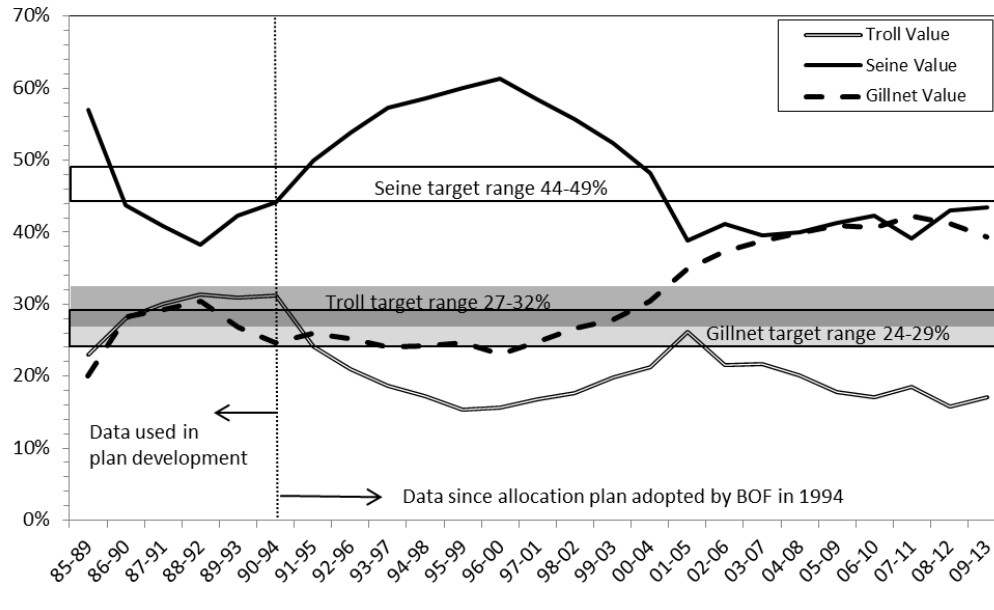
Drift Gillnet harvest value has been above range for over three consecutive years



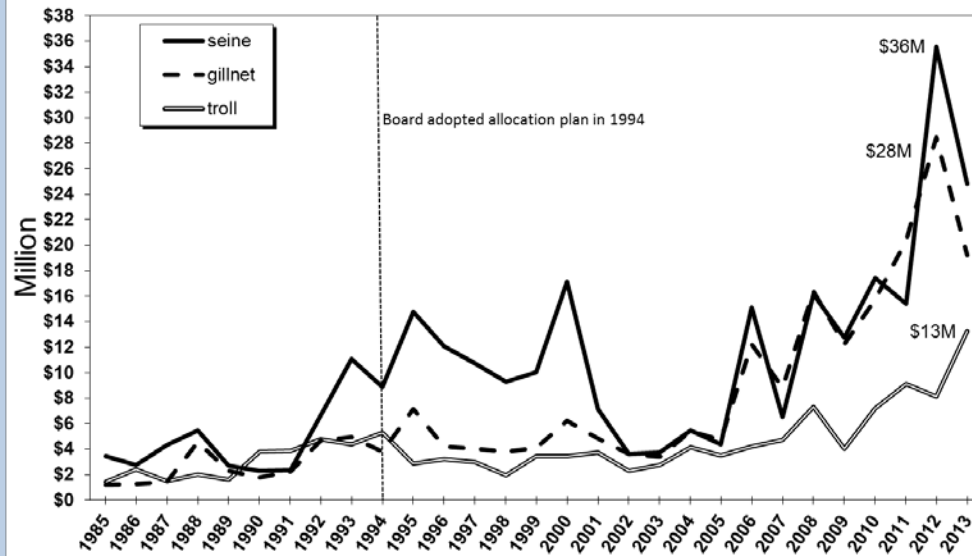
Troll harvest value has been below range for over three consecutive years.



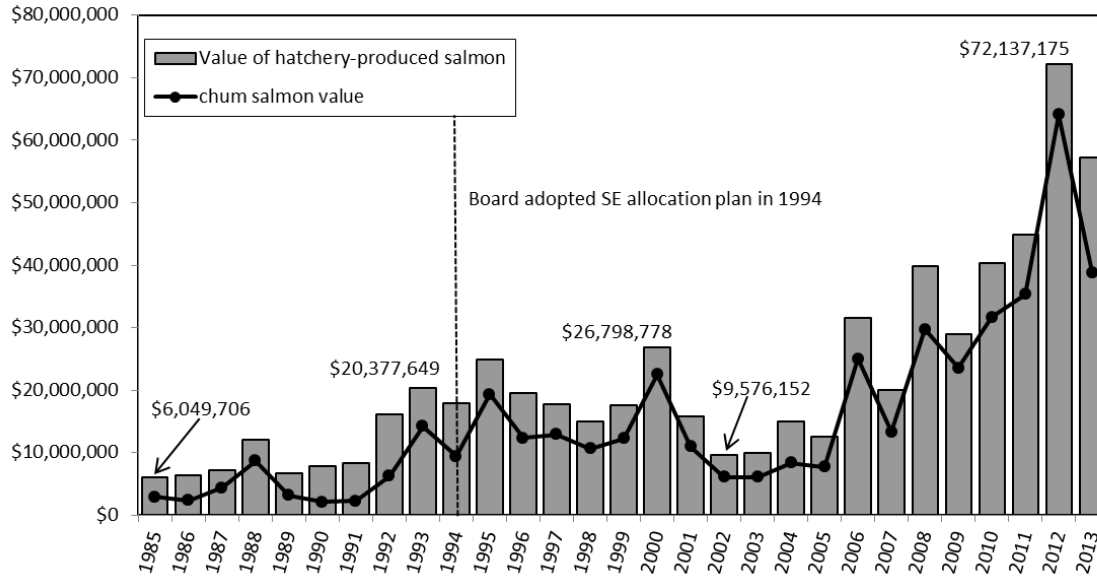
Value of Southeast Alaska Hatchery-Produced Salmon in Five-Year-Rolling Averages



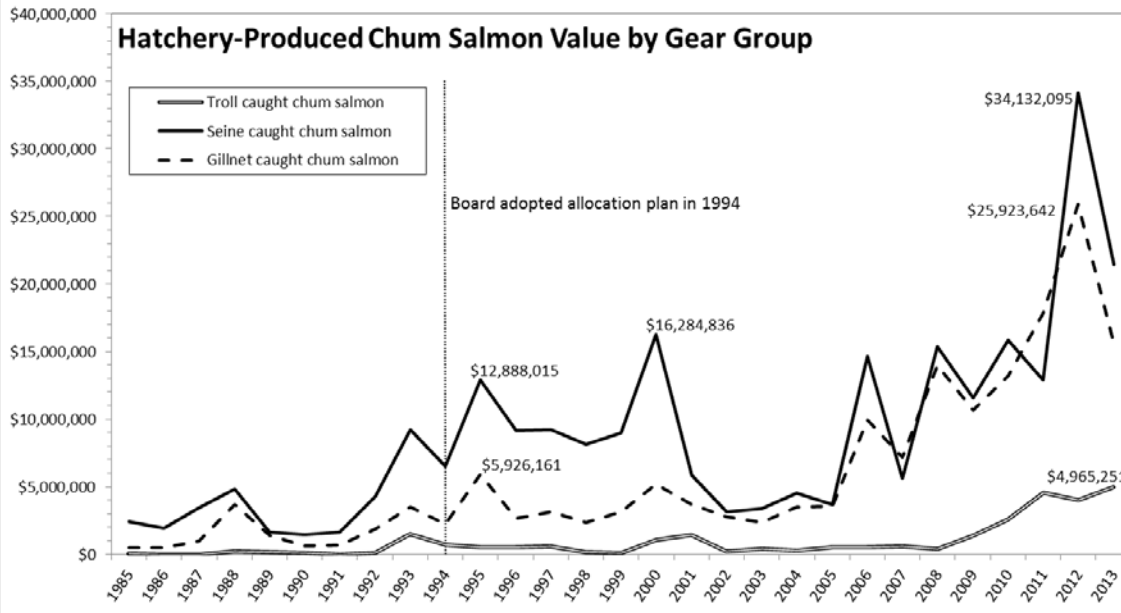
Value of Hatchery-Produced Salmon by Gear Type



Value of Hatchery-Produced Salmon in Southeast



Hatchery-Produced Chum Salmon Value by Gear Group



- The Joint Southeast Regional Planning Team has submitted written comments on proposals that affect the allocation of hatchery-produced salmon.