



Lower Cook Inlet Commercial Salmon Fisheries

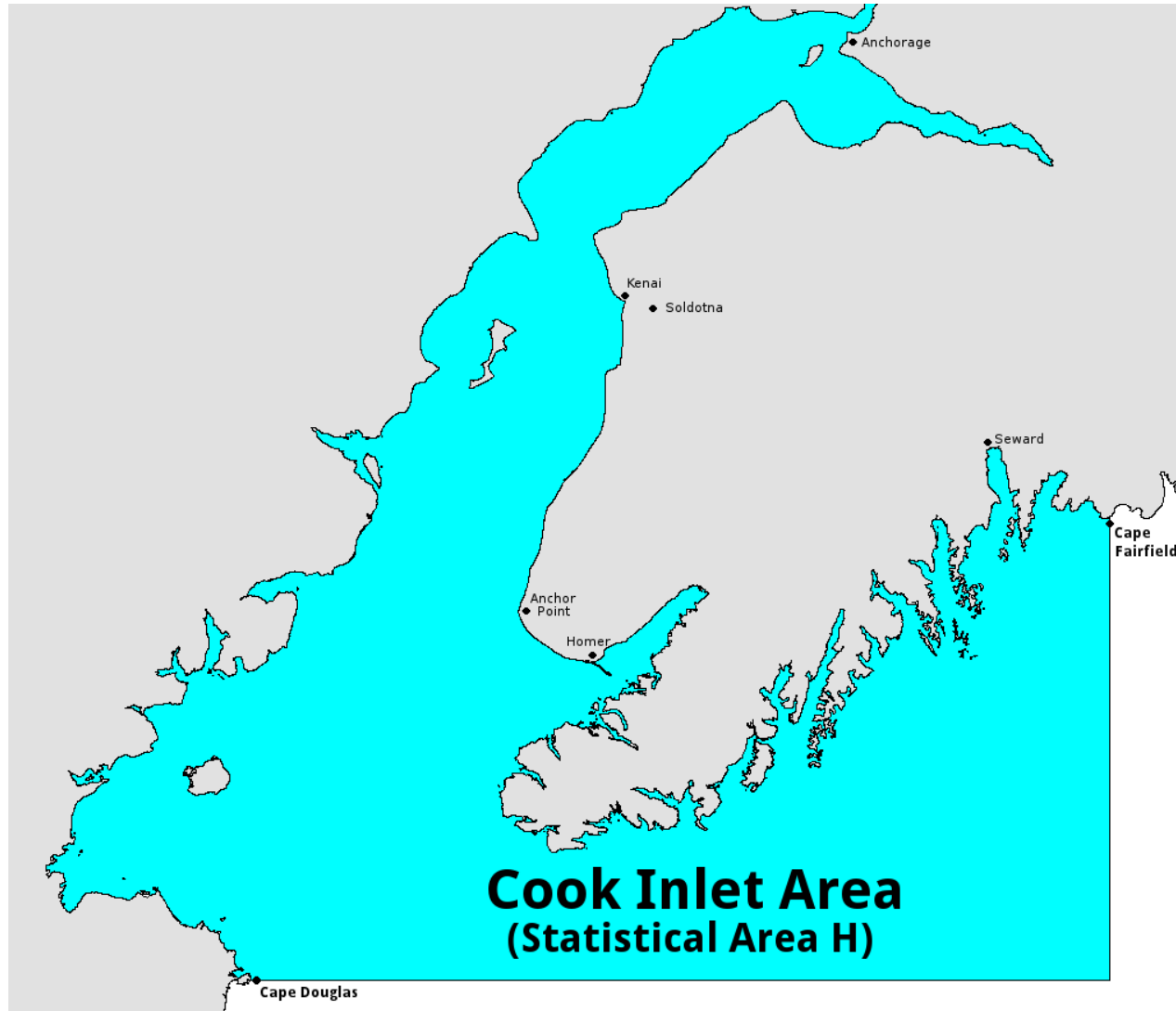
Presented to the Alaska Board of Fisheries
by Glenn Hollowell, ADF&G
December 8-11, 2013



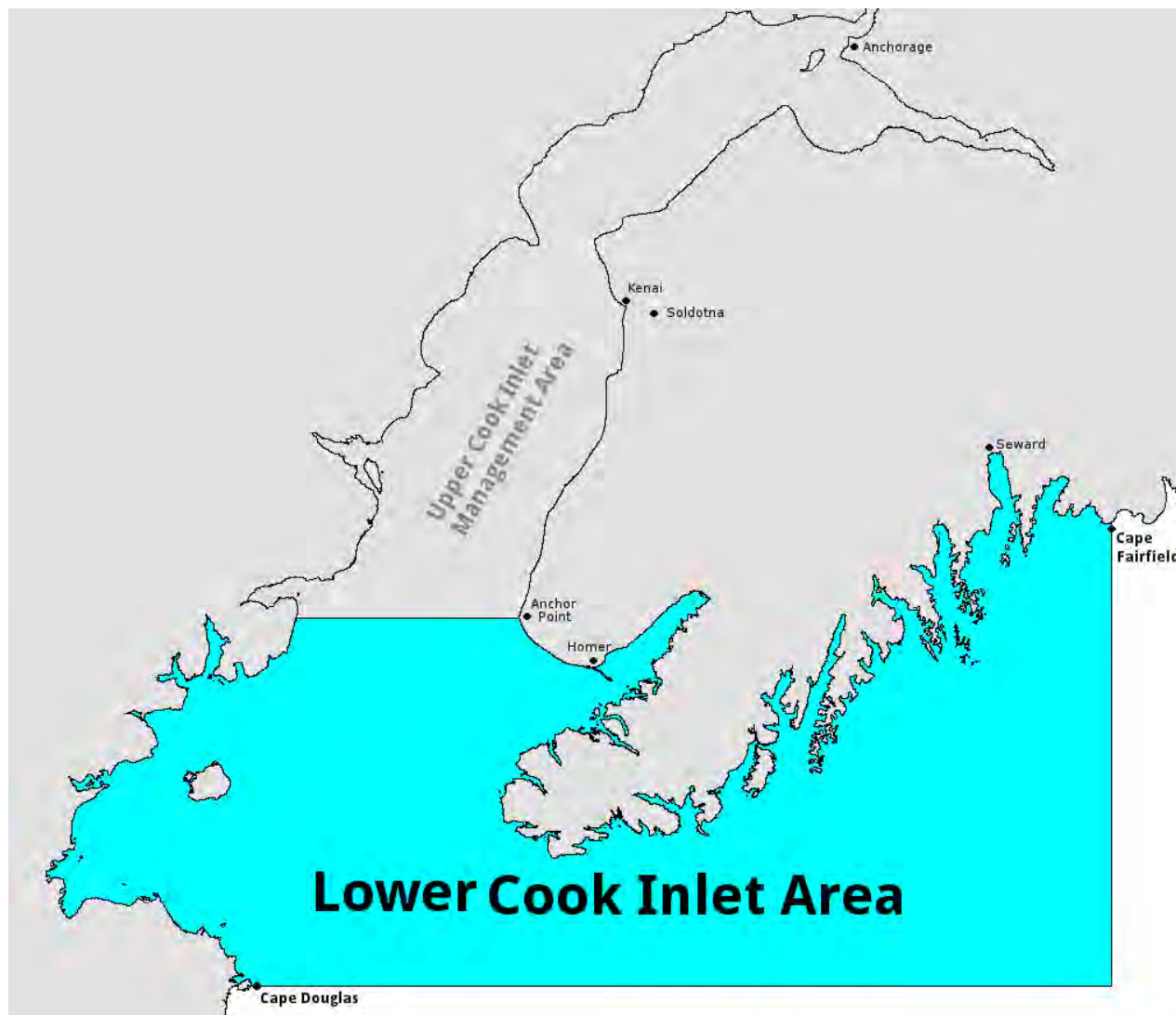
Overview

- Lower Cook Inlet Area (LCI) geography
- Overall historic area harvests and gear
Harvest by district and gear
- Fisheries enhancement
- 2013 commercial harvest
- Proposals before the board

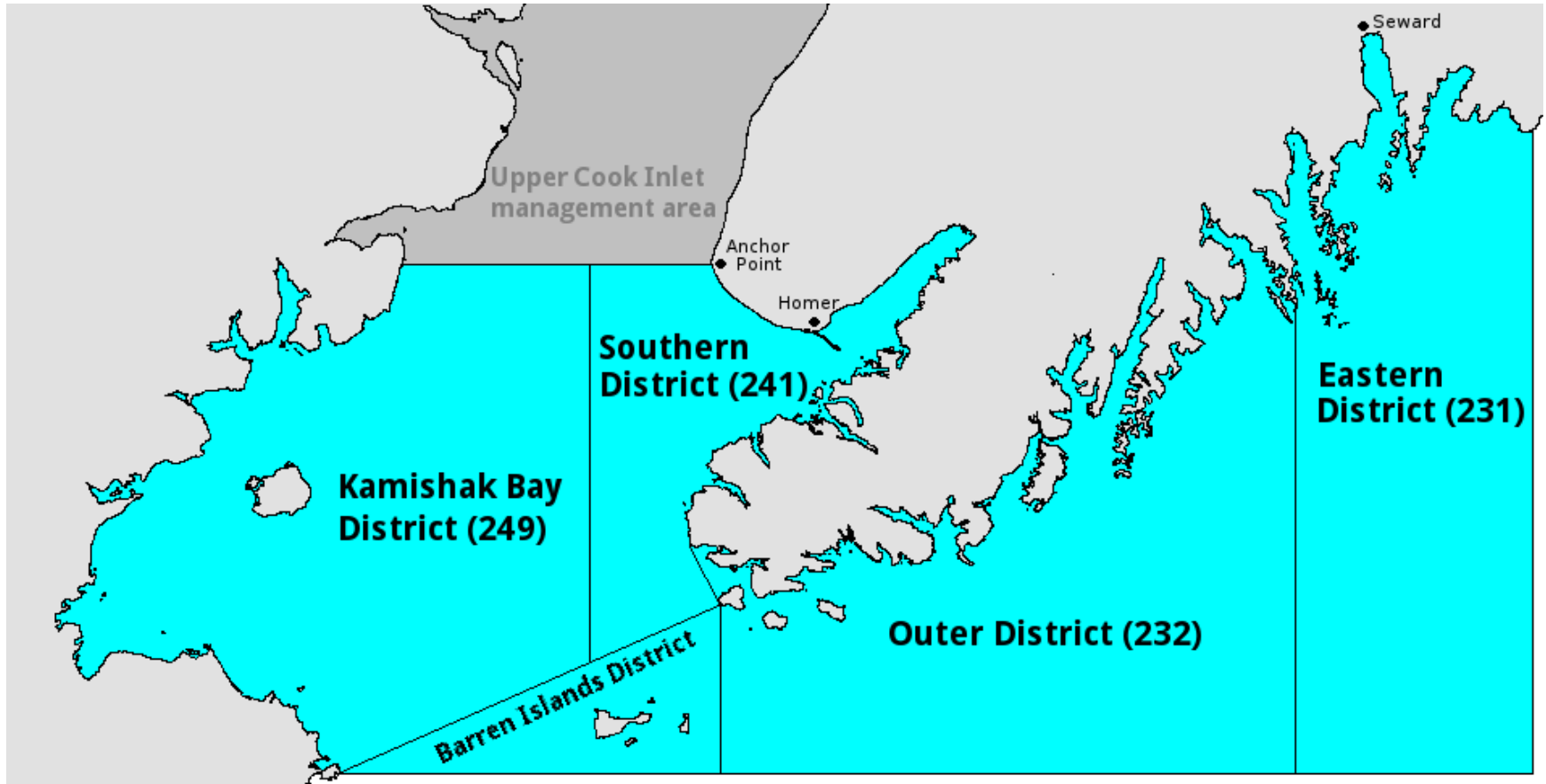
Cook Inlet (Area H)



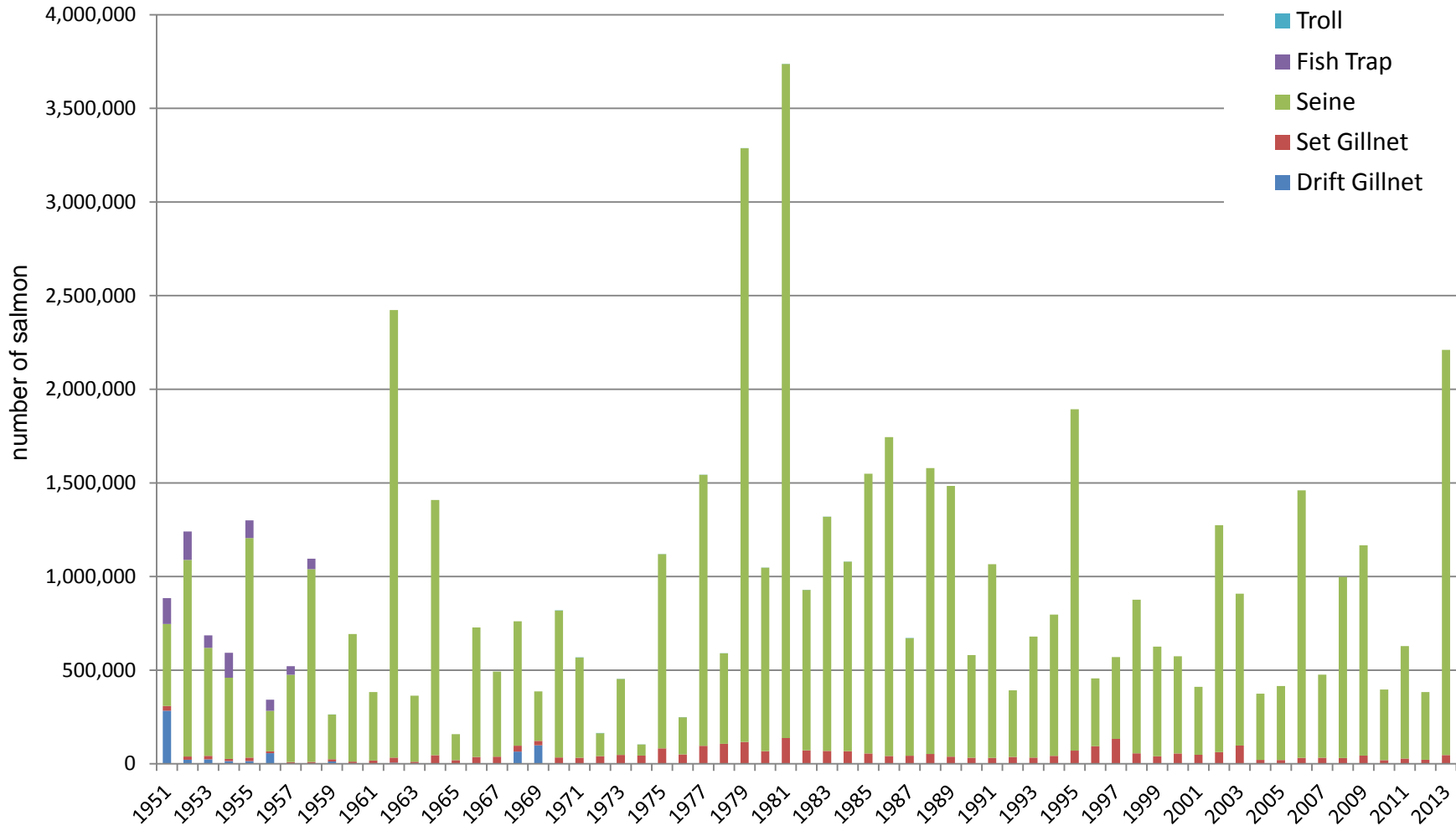
Cook Inlet (Area H)



Lower Cook Inlet Management Area

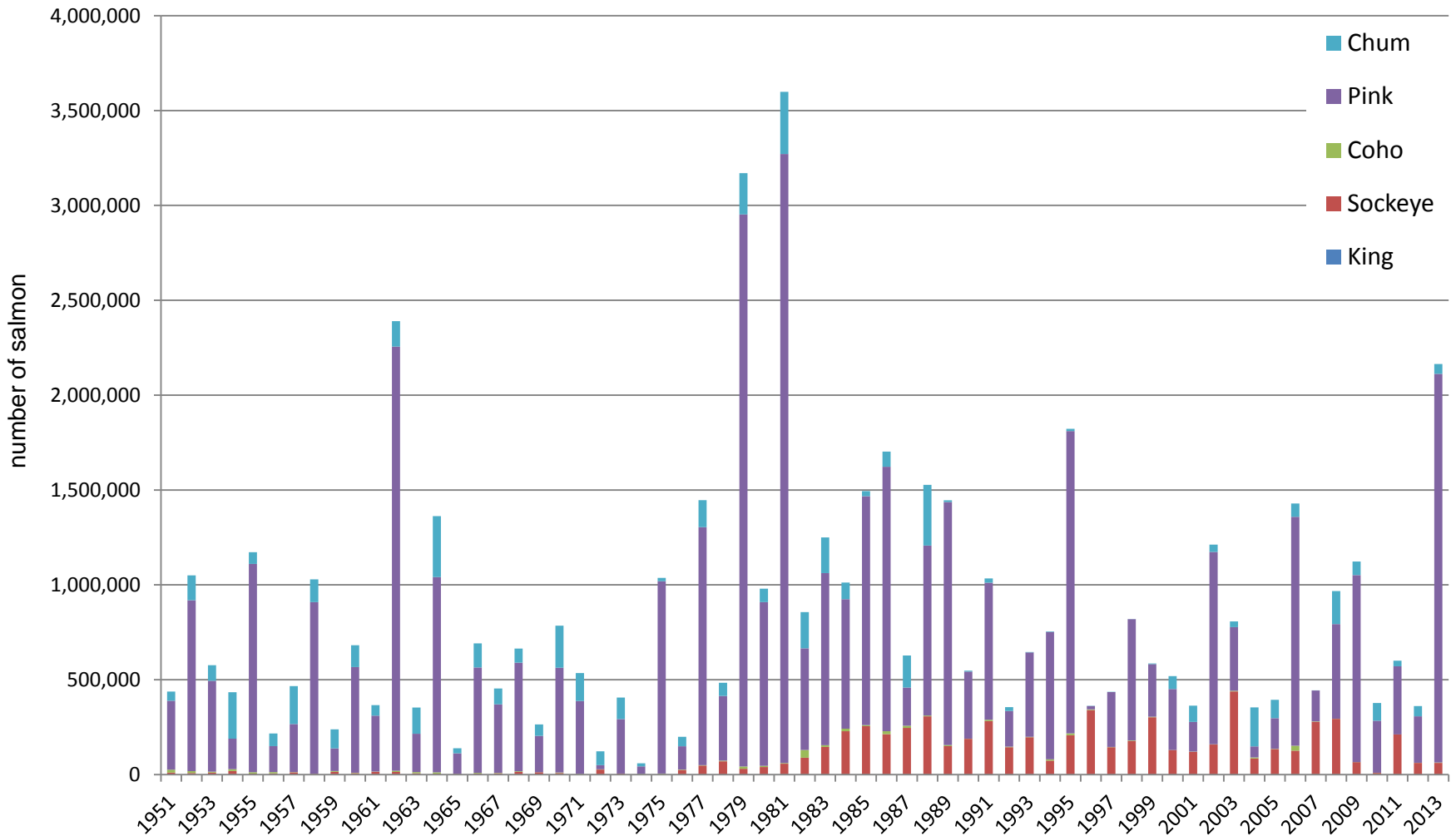


LCI Historical Harvests by Gear, 1951-2013



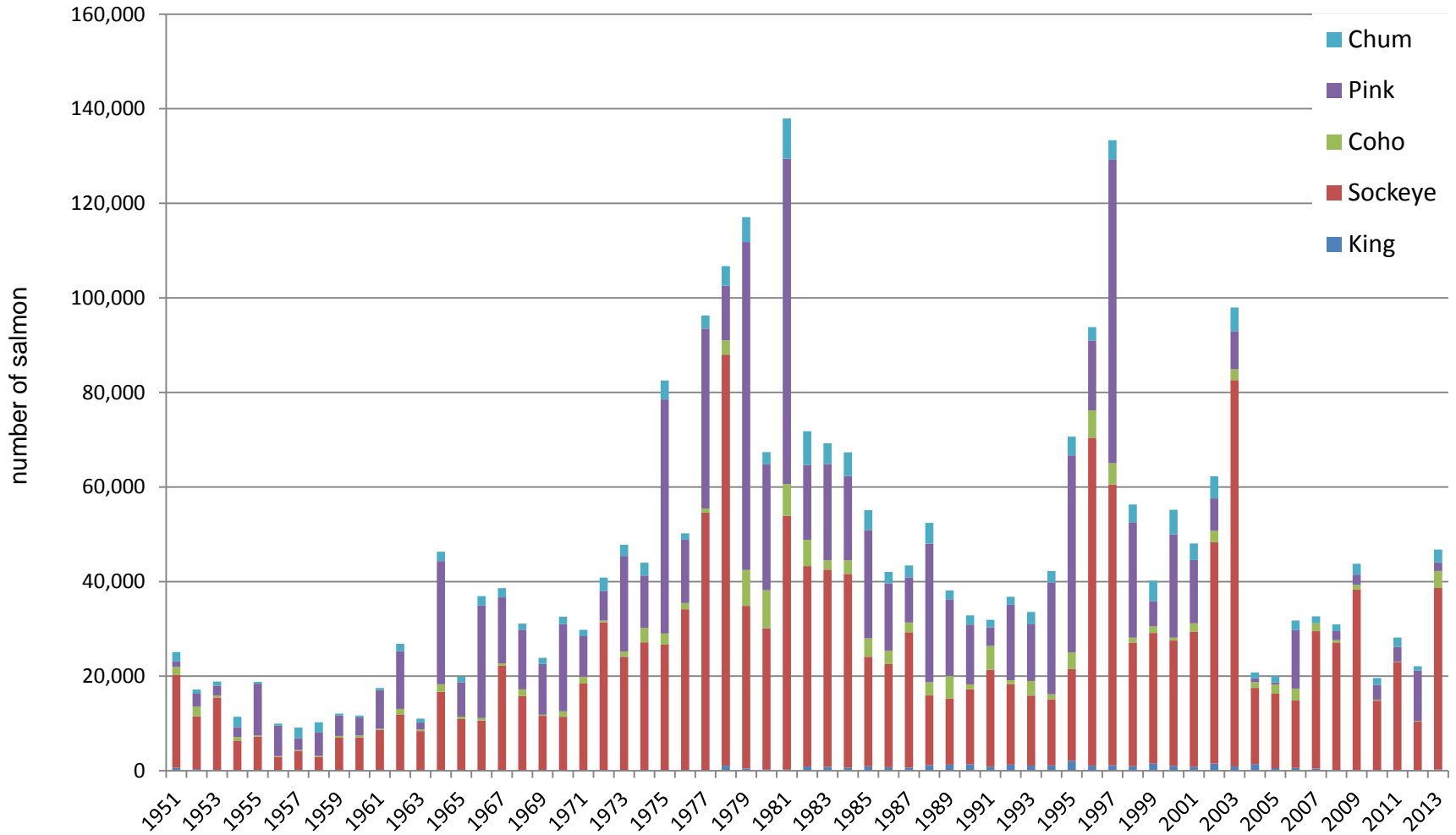


Seine Harvests in LCI, 1951-2013

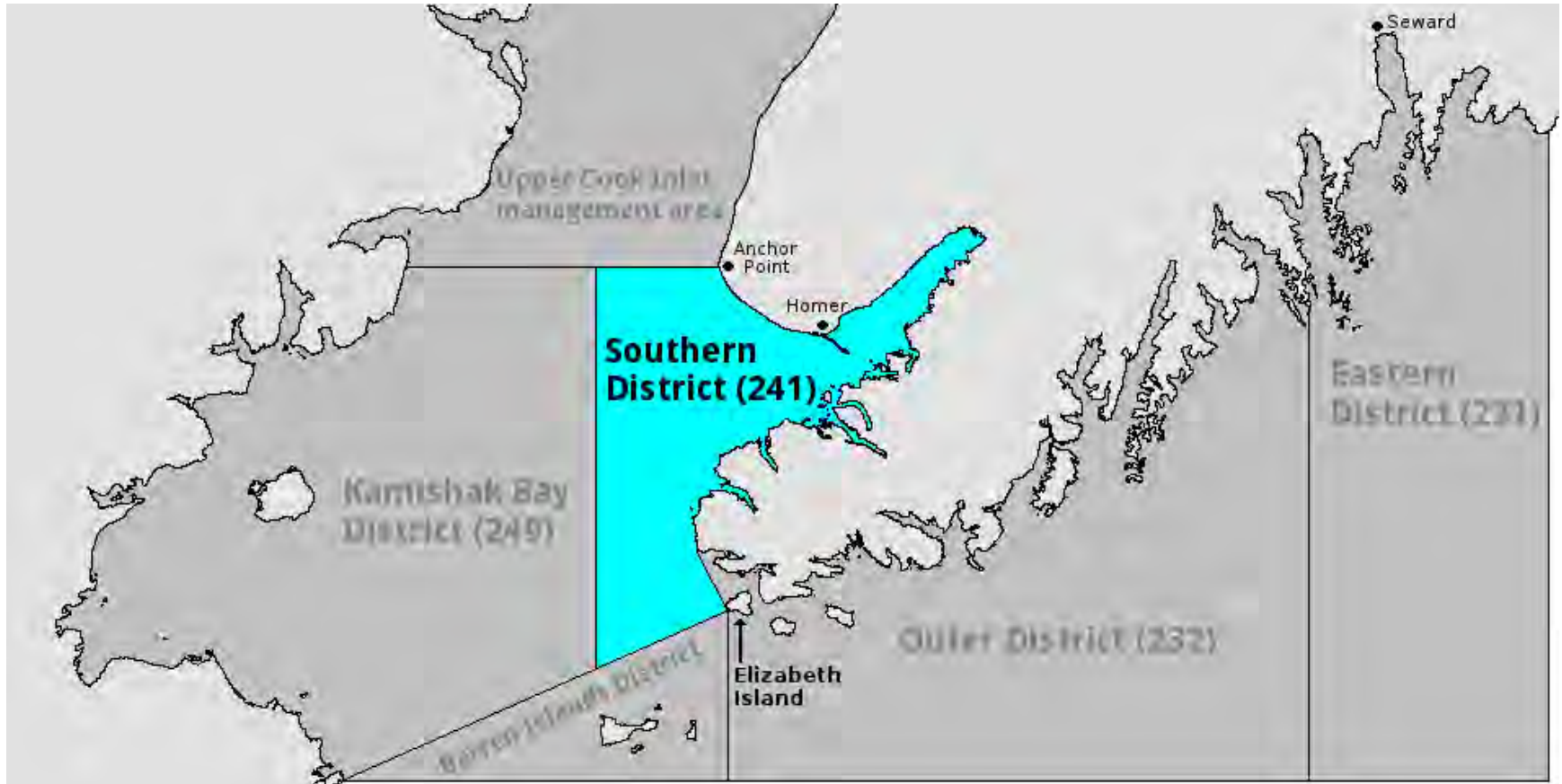




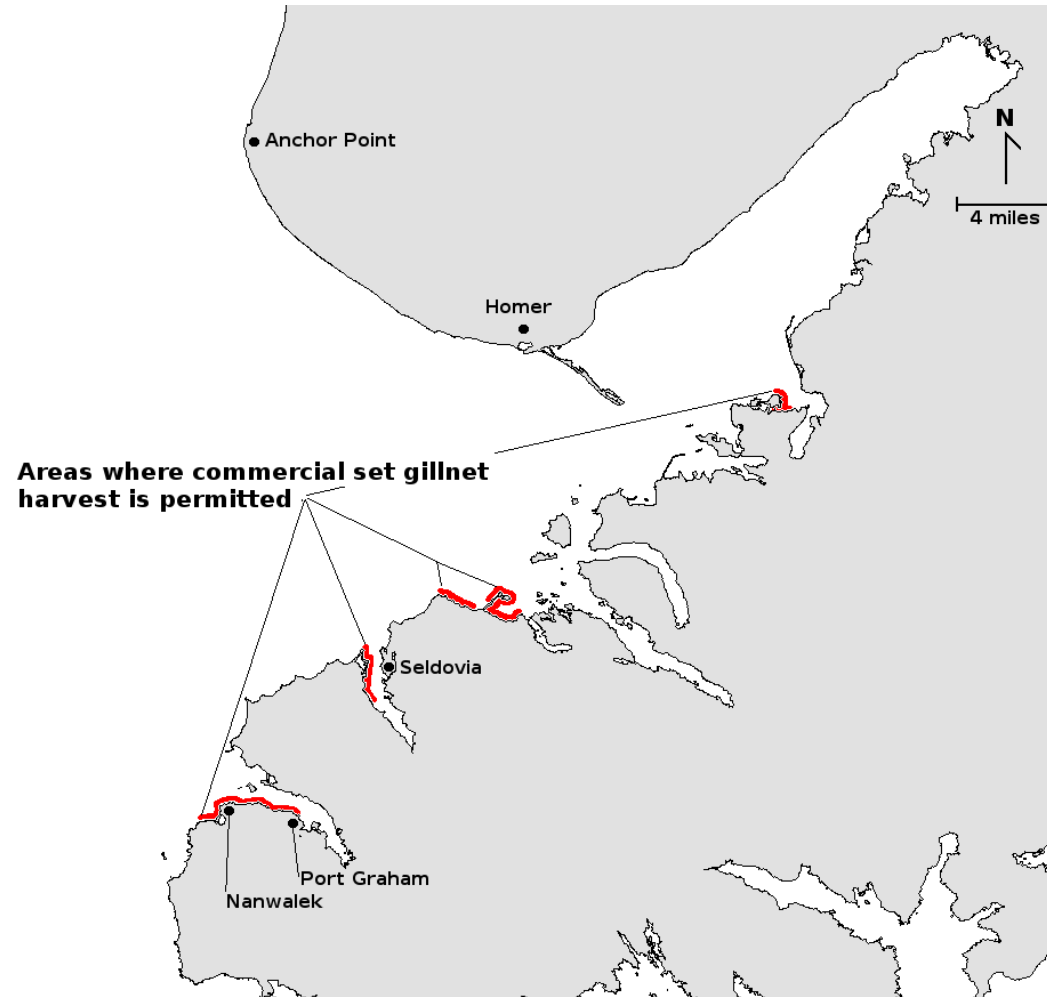
LCI Set Gillnet Harvests, 1951-2013



Southern District Harvests

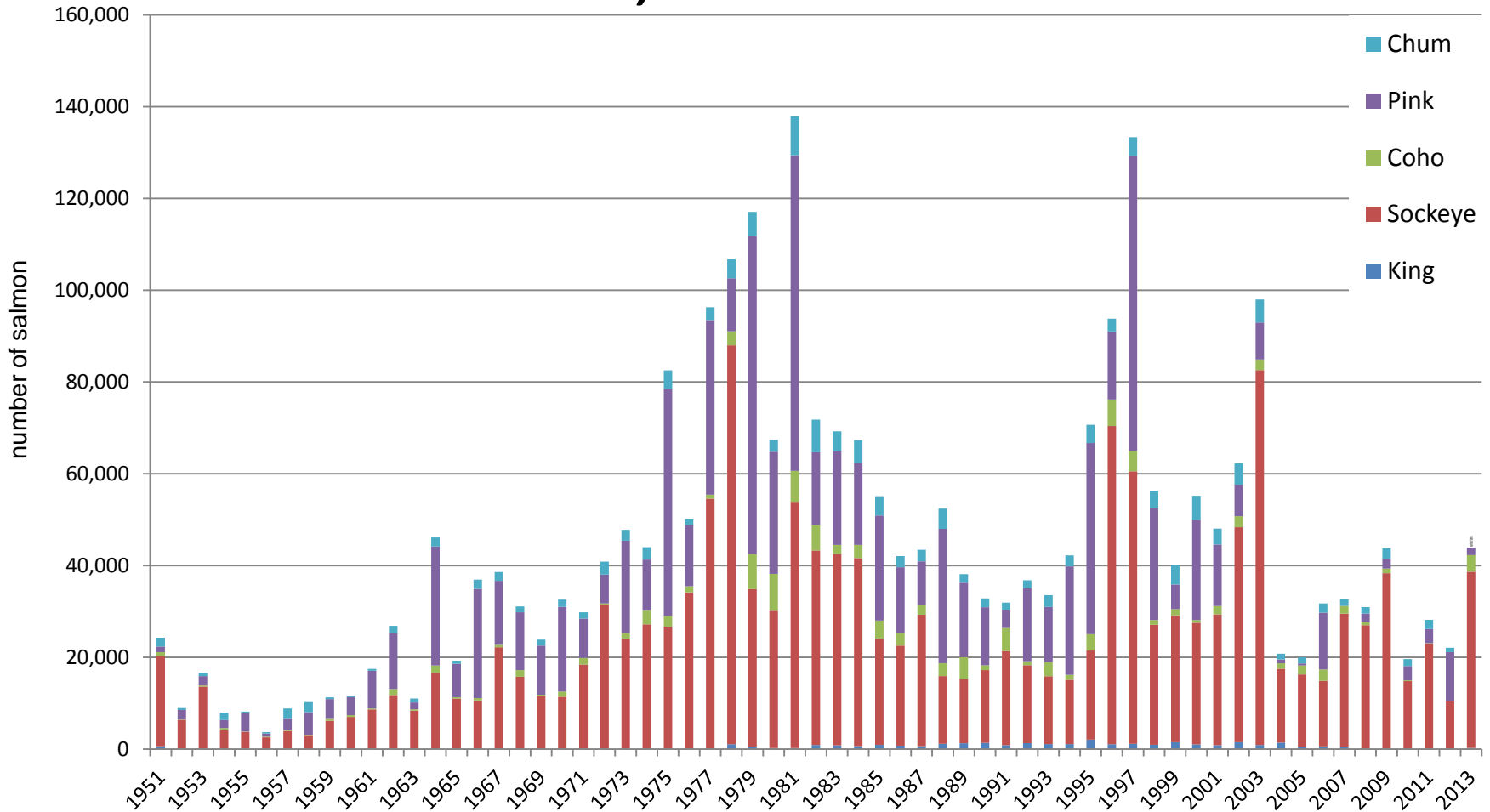


Southern District Harvests



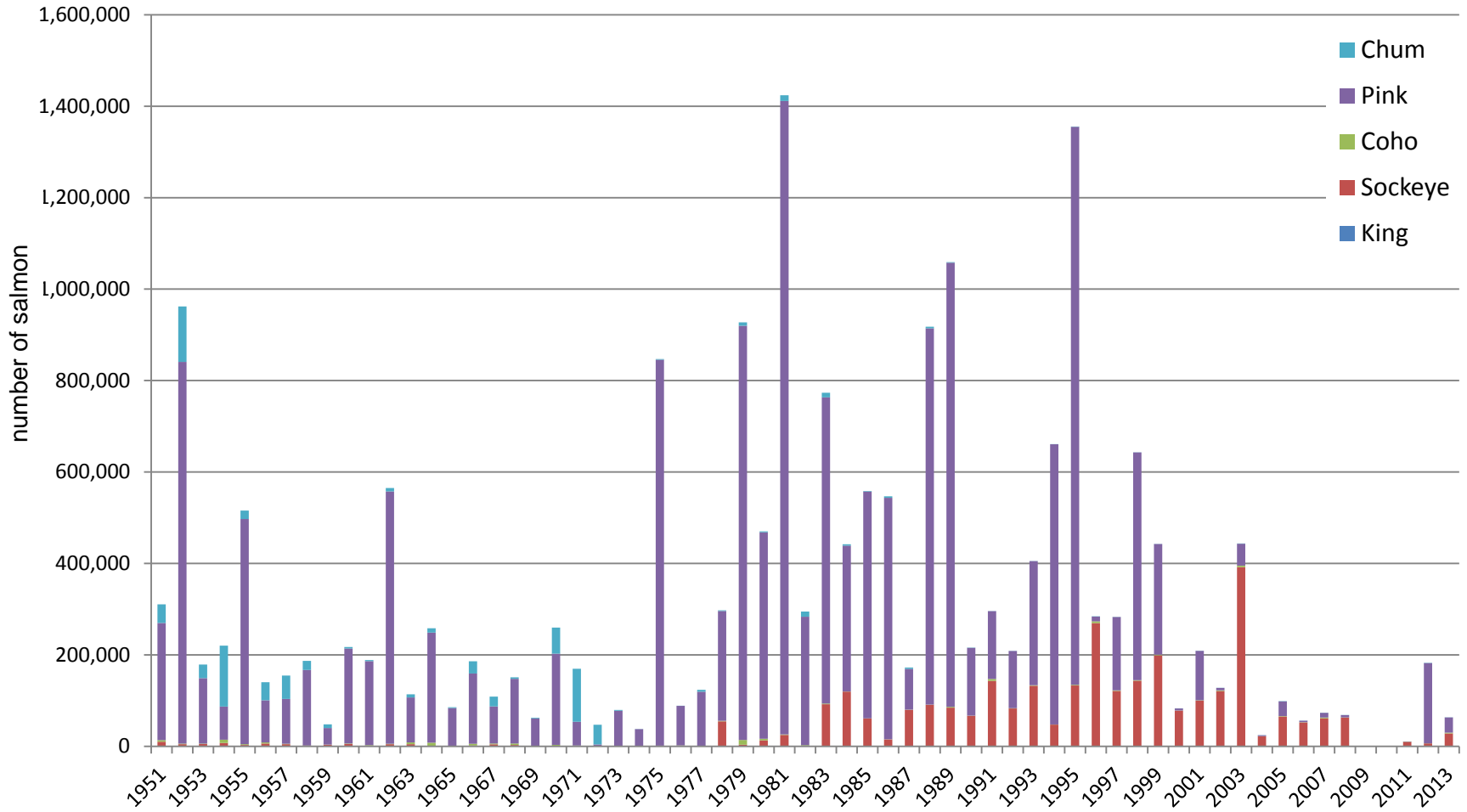


Southern District Set Gillnet Harvests, 1951-2013

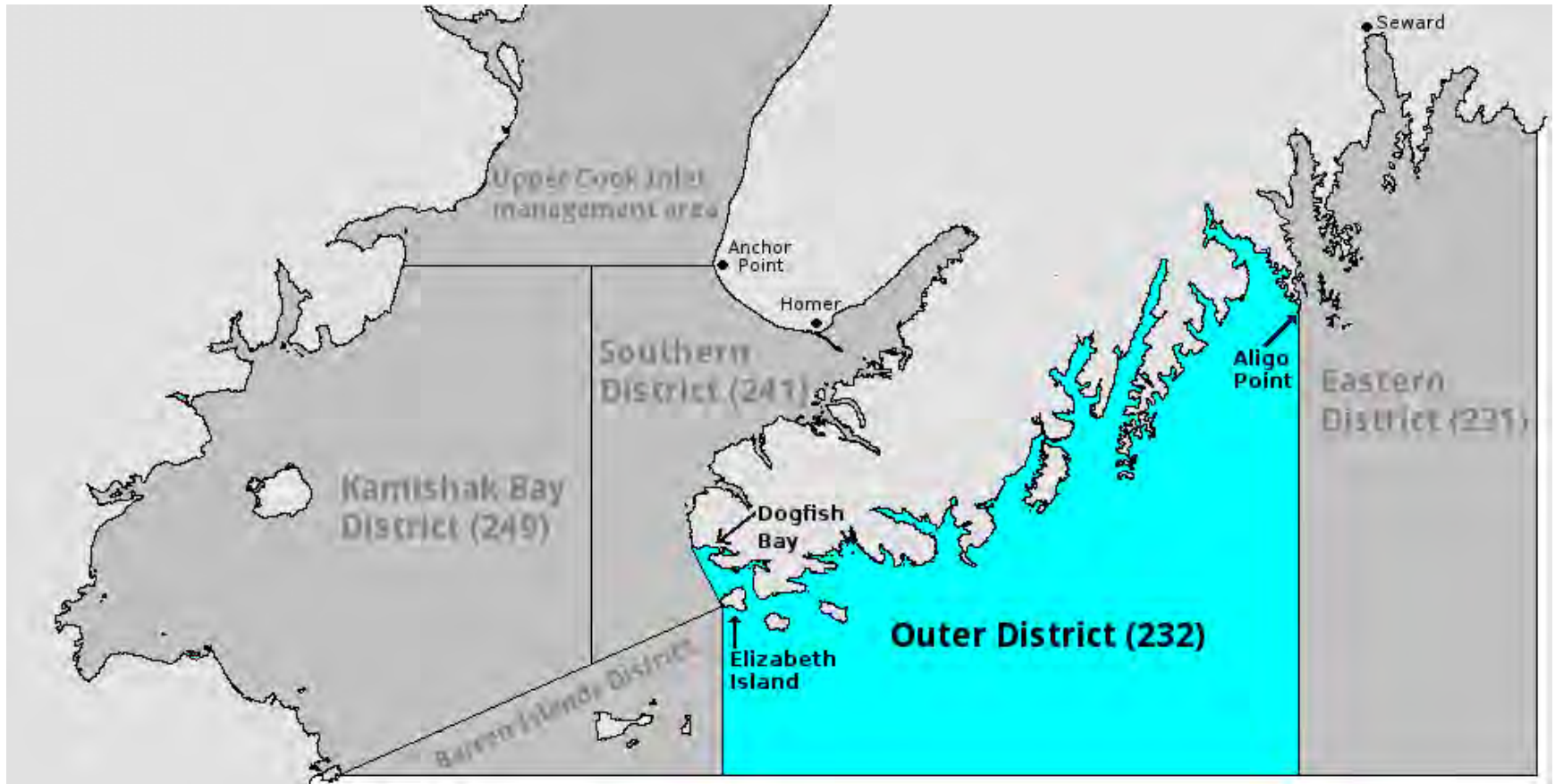




Southern District Purse Seine Harvests, 1951-2013



Outer District Harvests



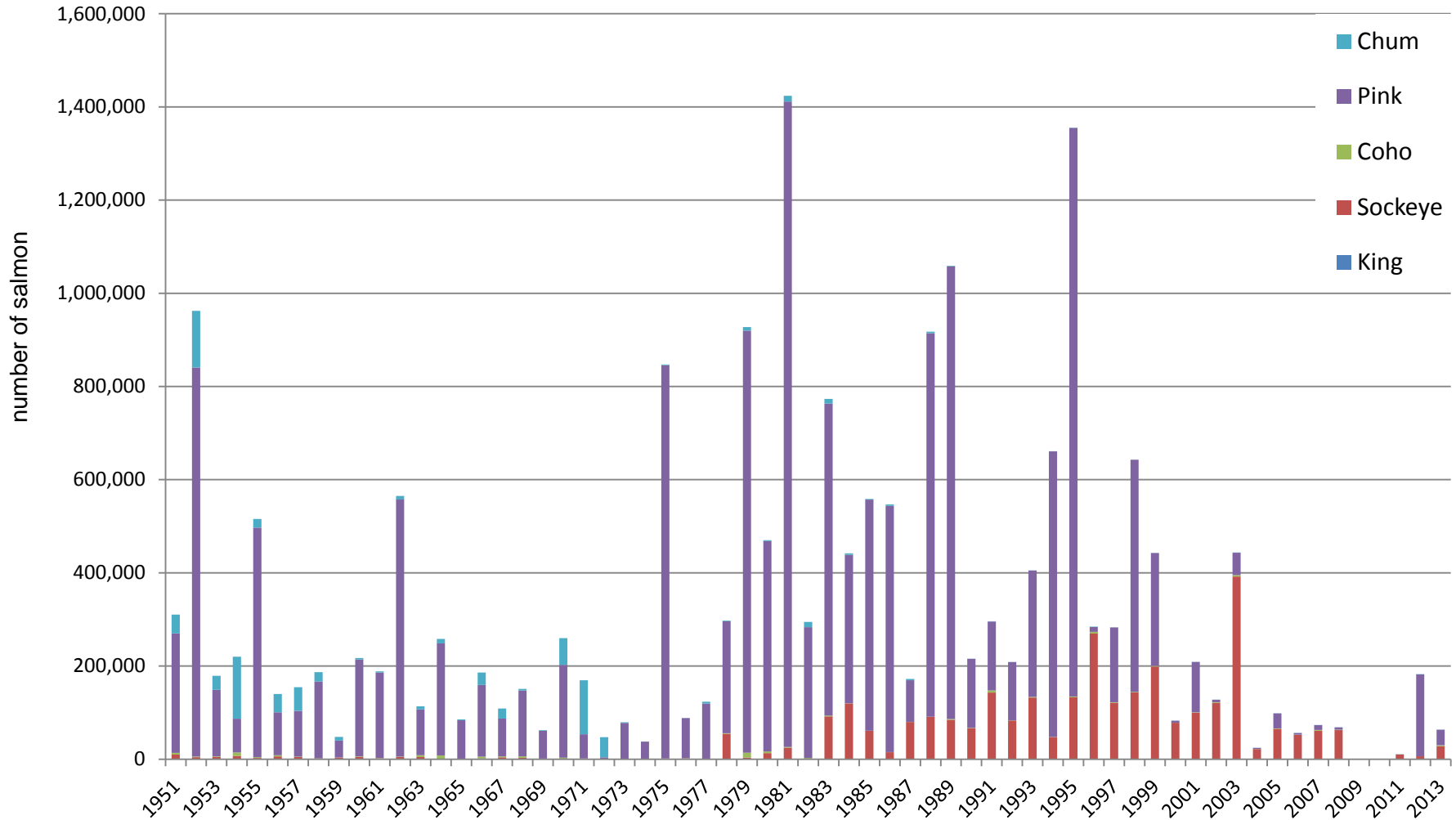


Outer District Harvests

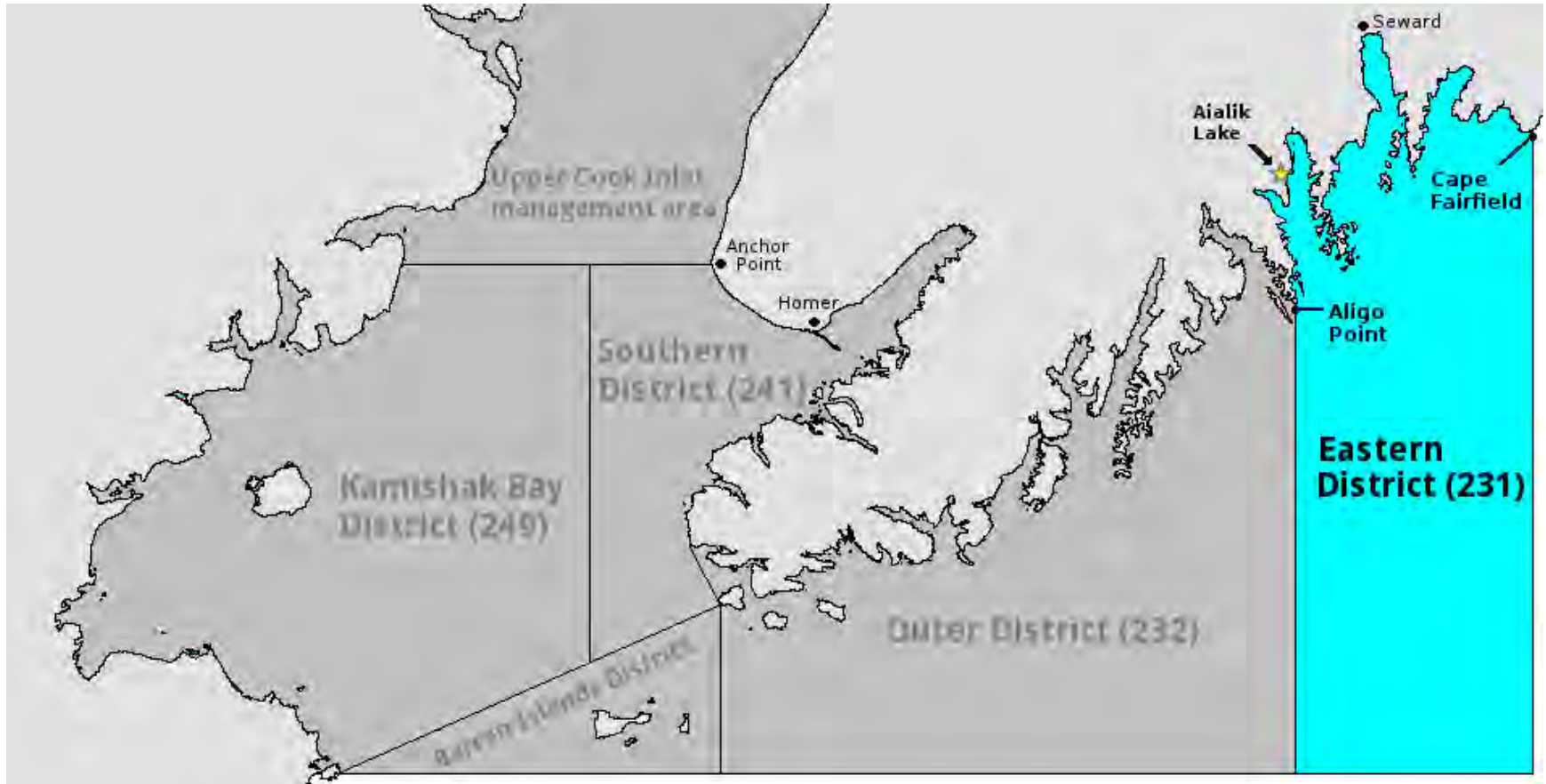




Outer District Harvest by Species

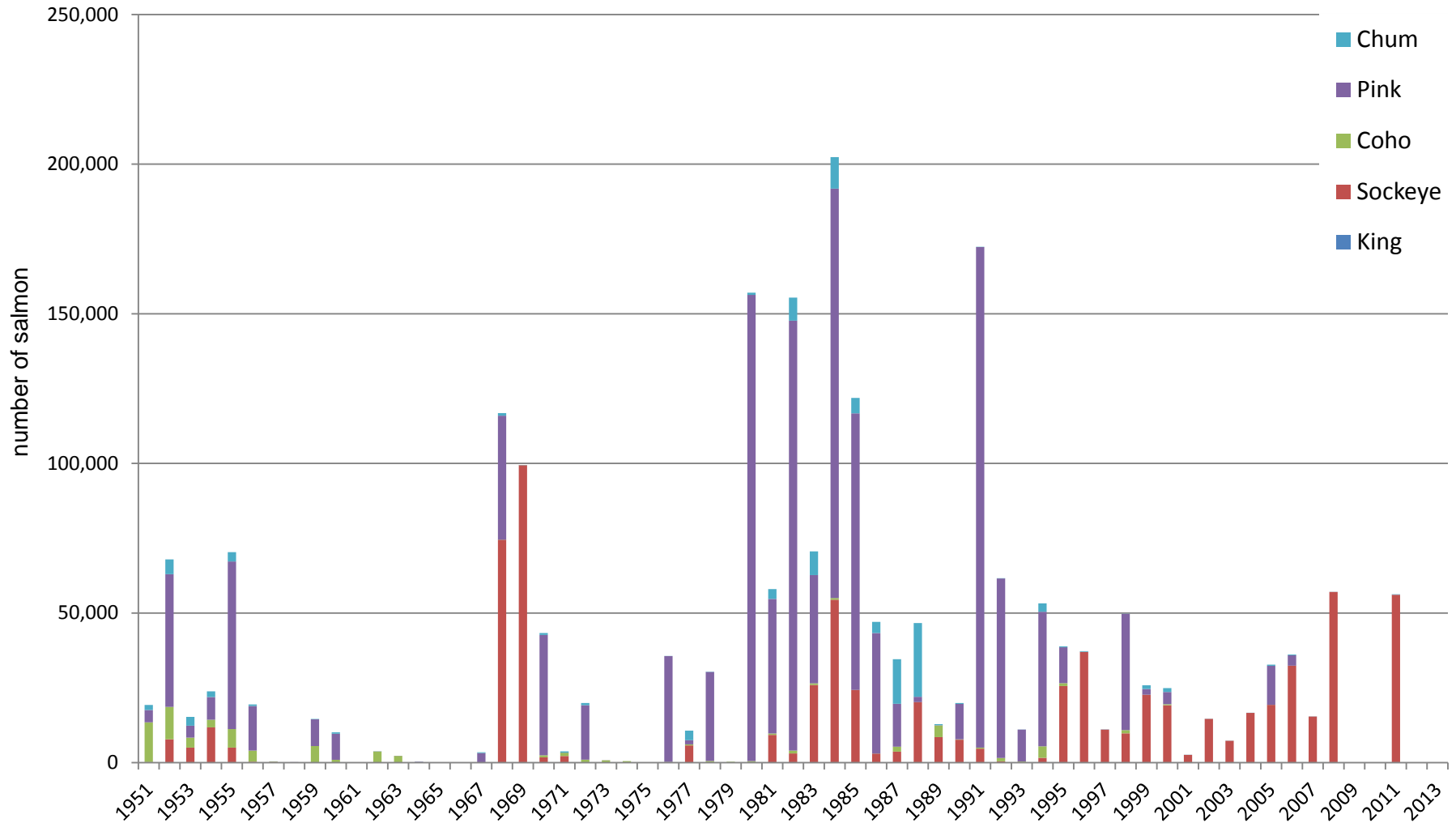


Eastern District Harvests



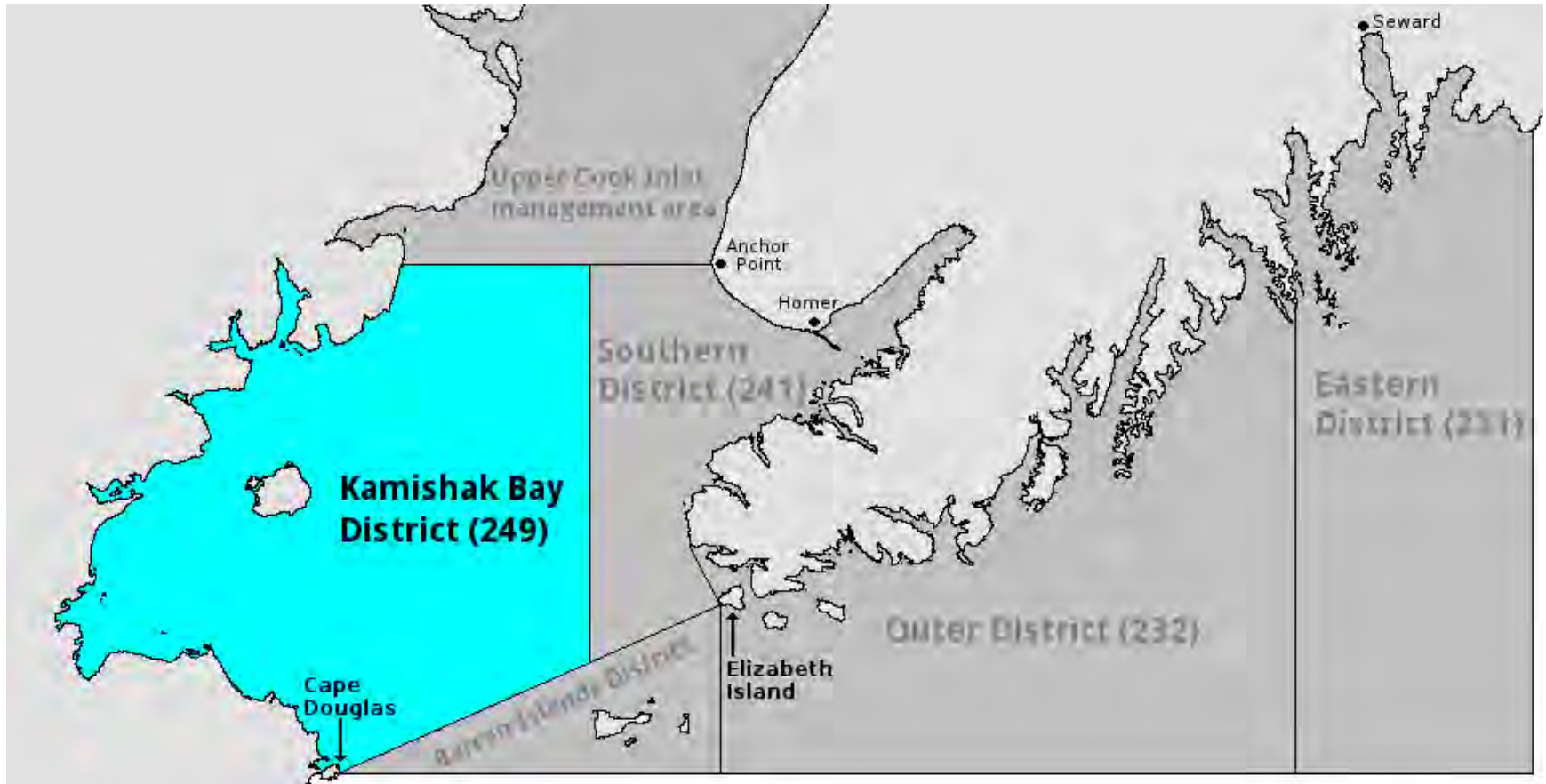


Eastern District Harvest by Species

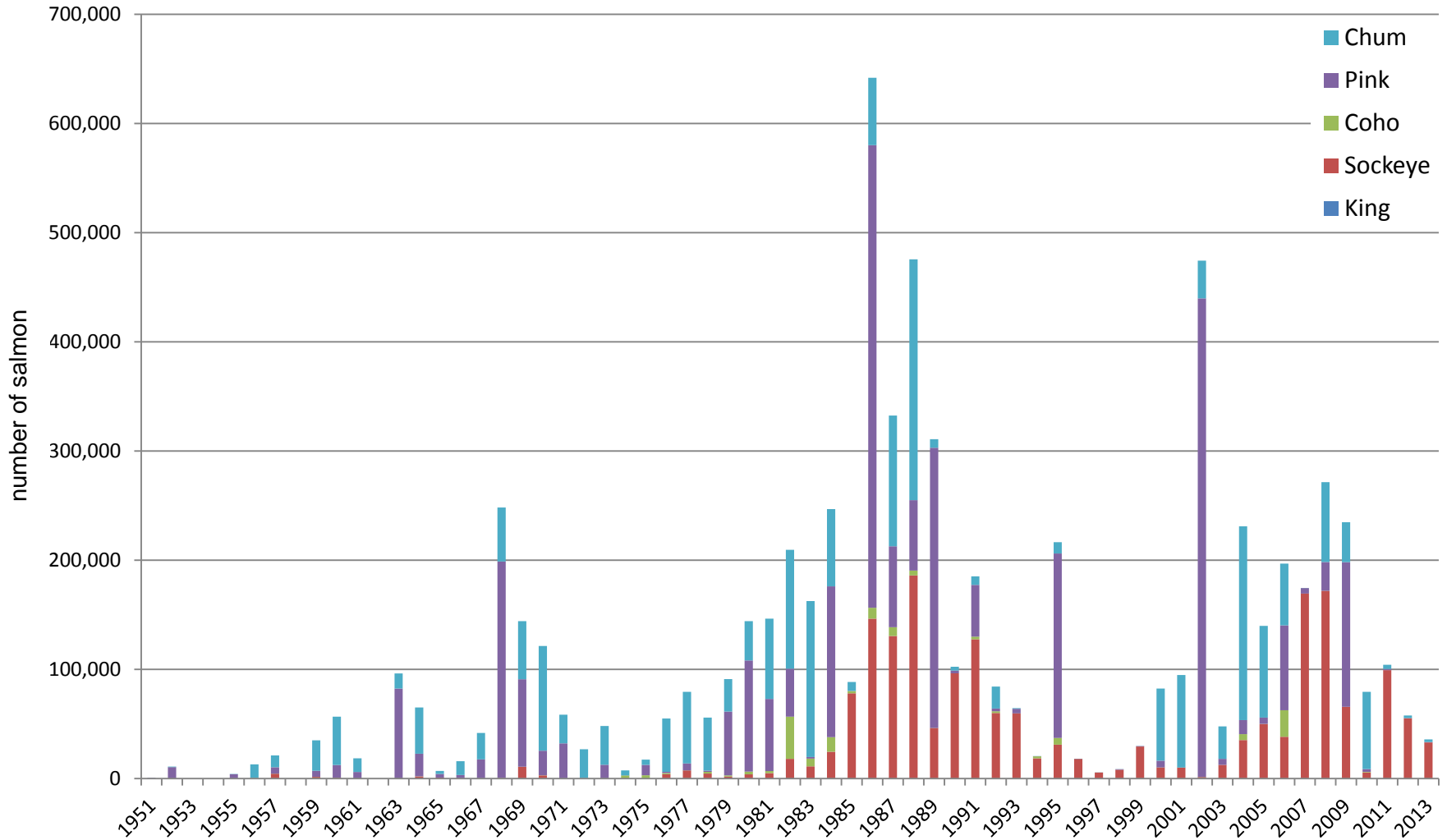




Kamishak Bay District Harvests



Kamishak District Harvest by Species

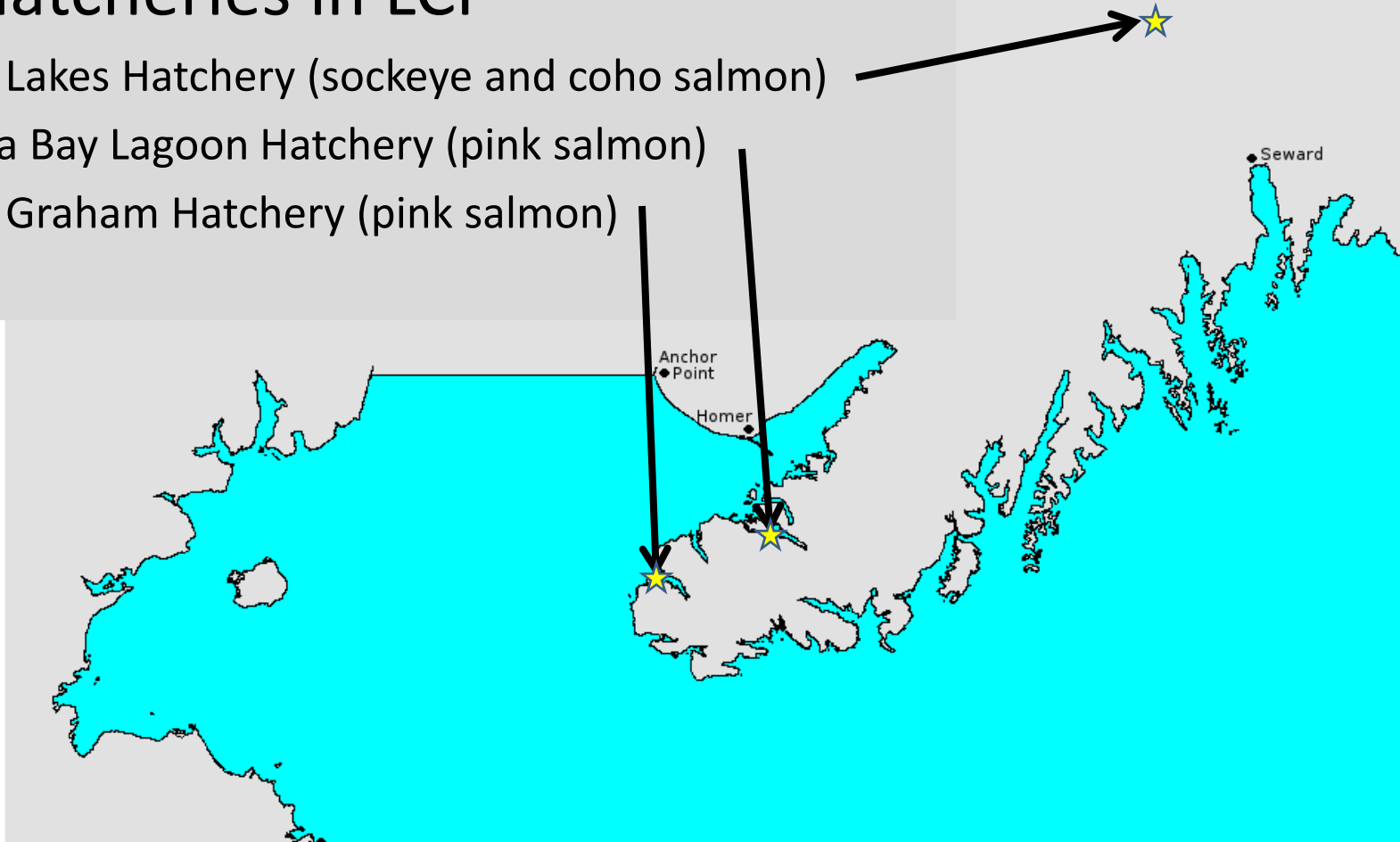




Enhancement

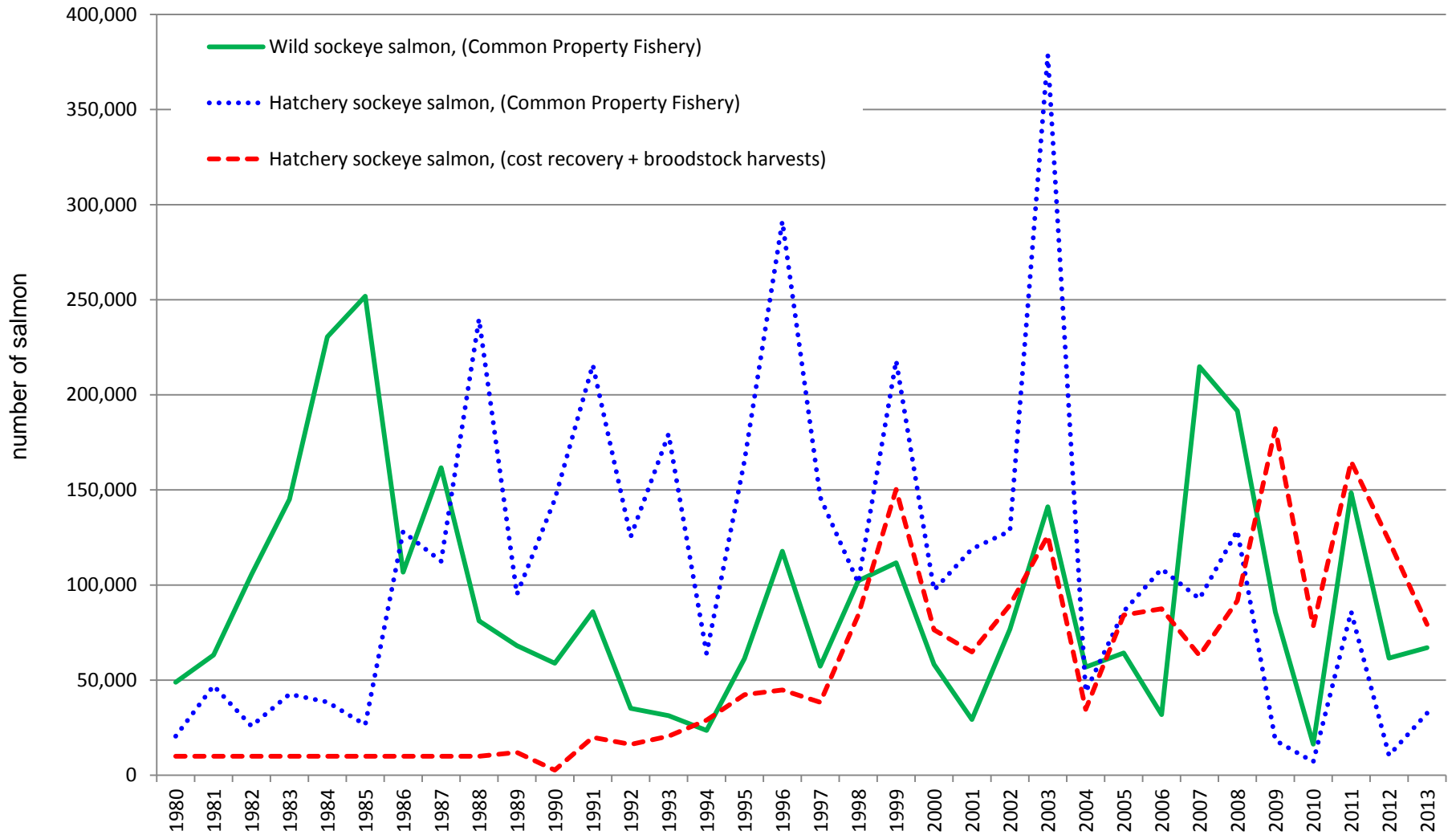
Three hatcheries in LCI

- Trail Lakes Hatchery (sockeye and coho salmon)
- Tutka Bay Lagoon Hatchery (pink salmon)
- Port Graham Hatchery (pink salmon)



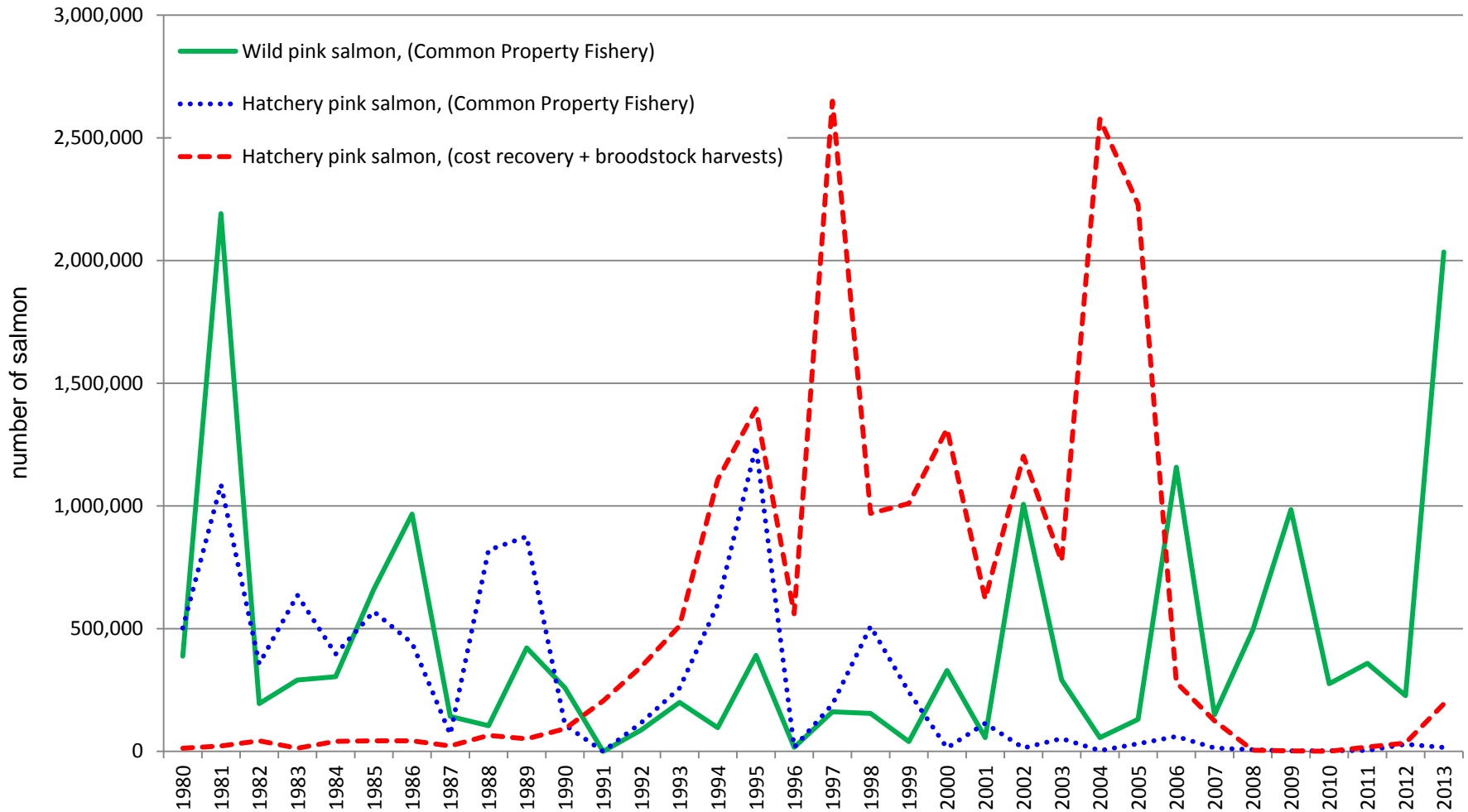


Sockeye Salmon Harvests





Pink Salmon harvests





2013 Harvest

- Commercial harvests in 2013
 - 11 purse seine permit holders in the Outer District harvested 2.0 million pink salmon vs. a previous 10-yr average of 372 thousand fish.
 - 18 set gillnet permit holders in the Southern District harvested 38,400 sockeye and 3,600 coho salmon vs. a 10-yr average of 27,000 and 1,100 fish.
 - Salmon returns in the Kamishak and Eastern districts were mixed with generally fair to good escapement for pink, chum, and sockeye salmon.
 - Overall common property commercial seine and set gillnet harvest was worth \$3.3 million and \$552 thousand dollars, or on average \$300 thousand and \$31 thousand dollars per permit holder in 2013, respectively.

2013 LCI Commercial Proposals



- (2) Submitted by department
 - Closed waters (#80)
 - Change regulatory marker references to latitude and longitude points (#78)
- (3) Submitted by CIAA
 - Hatchery management plan creation or adjustment for Port Graham Hatchery, Trail Lakes Hatchery, and Tutka Bay Lagoon Hatchery (#82-84).
- (1) Submitted by stakeholders
 - Redrawing stat areas in Port Dick (#77)

Thank you for your time. Questions?

