

North Pacific Fishery Management
Council – Board of Fisheries
Issue Update

Board of Fisheries Worksession
October, 2012

RC16

Presentation Outline

- Board proposals presented to council
- Council issue update
 - Bycatch
 - Chinook & Chum salmon in BSAI pollock fisheries
 - Chinook salmon in GOA pollock fisheries
 - Halibut in GOA groundfish fisheries
 - Tanner in Kodiak nonpelagic trawl fisheries
 - Salmon FMP
 - Jig management
 - Bering Sea Tanner rebuilding

Alaska Board of Fisheries

Agenda Change Requests: to be considered and scheduled at the board Work Session
October 9 - 11, 2012, Anchorage

ACR 7 - Change the vessel size limit for the Registration Area O (Aleutian Islands Area) red king crab fishery, in state waters from 172° W. long. to 179° W. long, from 90 feet or less in overall length to less than 60 feet in overall length.
(5 AAC 34.610(d)).

ACR 8 - Establish a pot limit of 10 pots per vessel fishing for red king crab near Adak Island in Registration Area O (Aleutian Islands Area). (5 AAC 34.625(x))

Alaska Board of Fisheries

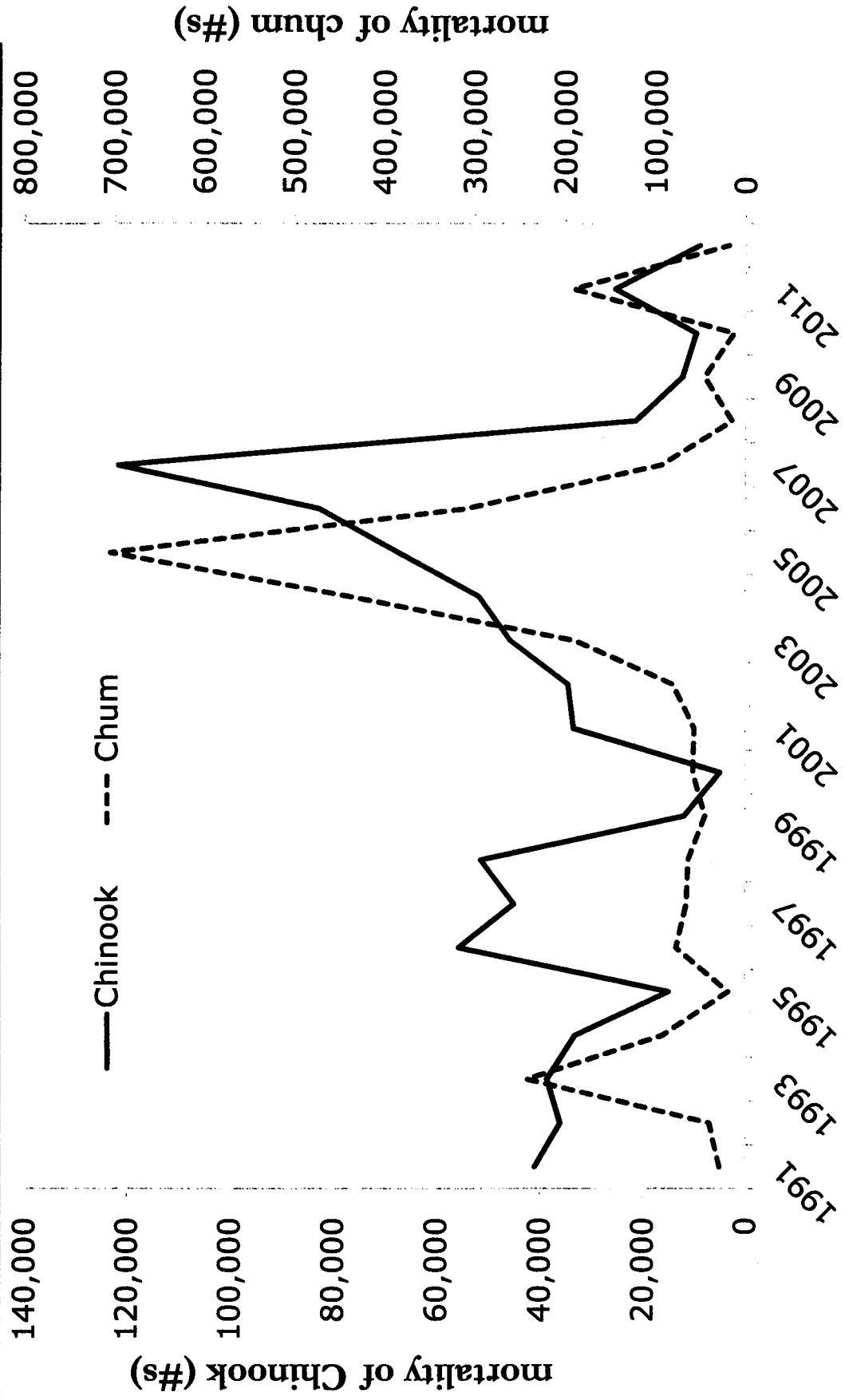
Alaska Peninsula/Aleutian Islands Finfish

February 26 – March 3, 2012, Anchorage

- 155 – Increase Aleutian Islands District state-waters Pacific cod GHL (west of 170° W long) from 3% to 4.5% of the BSAI Pacific cod ABC.
- 160 – Establish a state-waters Pacific cod fishery in the Bering Sea portion of Area O.
- 161 – Establish a state-waters Pacific cod fishery in the Bering Sea portion of Area O (includes more specifics on GHL level and registration requirements).
- 162 – Close all waters of Unalaska Bay to groundfish fishing with pelagic trawl gear.
- 163 – Modify state-waters sablefish season to coincide with federal sablefish season.
- 165, 166, 167 – Increase state-waters Pacific cod GHL from 25% to 50% of the Western Gulf Pacific cod ABC.
- 168 – Increase state-waters Pacific cod GHL from 25% to 55% of the Western Gulf Pacific cod ABC.
- 169 – Close state-waters surrounding Caton and Sanak Islands to nonpelagic trawl gear.

BSAI Salmon bycatch trends

BSAI pollock fishery: Offshore catcher processors, inshore catcher vessels, motherships, and CDQ



BSAI Chinook – Amendment 91

Implemented – January 1, 2011

- 100% - 200% observer coverage
- 100% retention of salmon for counting and systematic sampling
- Hard cap with bycatch reduction incentive program



Genetic sampling – 2010 results

(from the sample set – not collected systematically)

- Generally similar to 2005 – 2009 Chinook bycatch estimates
 - Higher proportion of Yukon stocks and lower proportion of Coastal Western Alaska stocks in 2010.
 - Higher concentration of PNW and British Columbia stocks during the “B” season.

2011 results ready in early 2013

BSAI chum salmon bycatch

Chum salmon bycatch management measures:

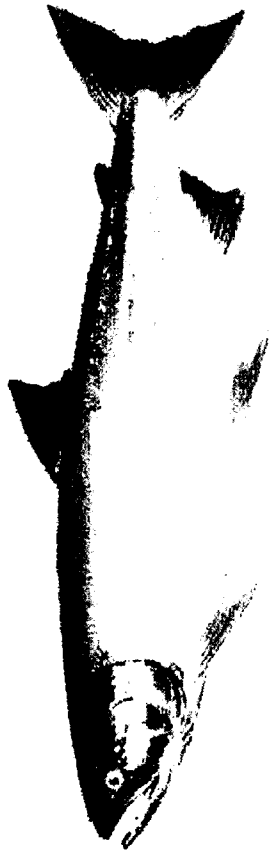
- Hard Caps (50,000 – 353,000 chum salmon)
- Triggered Time and Area Closures
- Rolling Hotspot Program (RHS)

*Alternatives may be combined to balance conservation goals (avoiding western Alaska chum salmon and Chinook salmon)



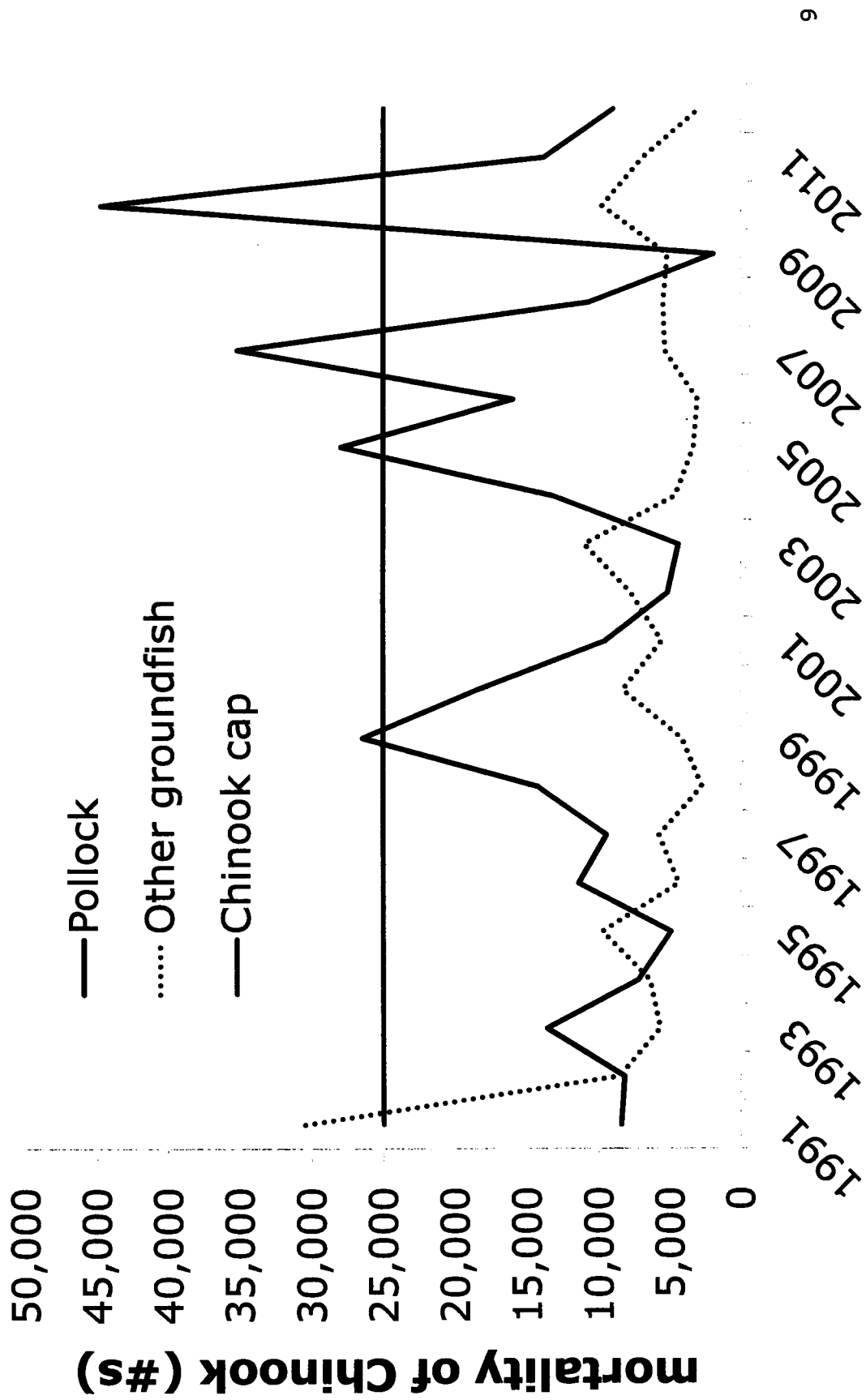
What Do We Know About BSAI Chum Salmon Bycatch?

- Asian chum salmon dominate the entire bycatch in the Bering Sea.
- Higher proportion of Western Alaska chum salmon in the bycatch during June/July.
- Higher proportions of Asian hatchery chum salmon later in the season (also higher proportion of Chinook salmon bycatch)



- Next analysis:
 - Initial review in December 2012; council may select a preliminary preferred alternative (PPA).
 - Final action – early 2013

GOA Chinook Salmon bycatch trends



Chinook Salmon Bycatch in the GOA Pollock Trawl Fishery

Final Action June 2011,
implemented August
2012.

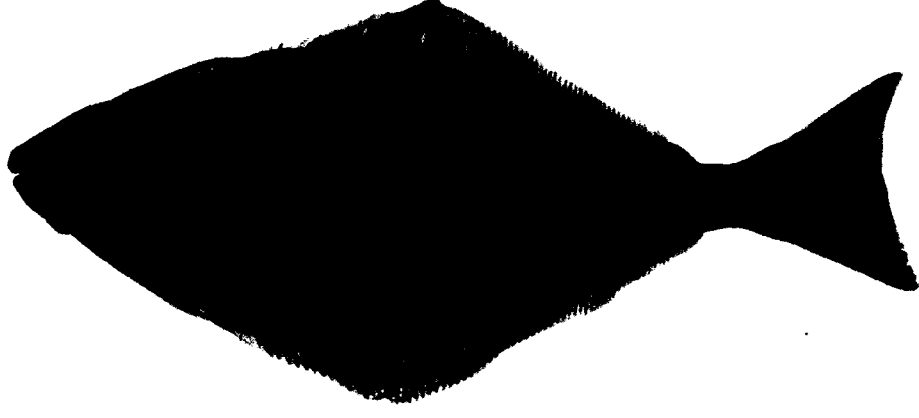
- Prohibited Species
Cap (PSC): 25,000
Chinook salmon
- Apportioned 73.26%
to the Central GOA and
26.74% to the Western
GOA.



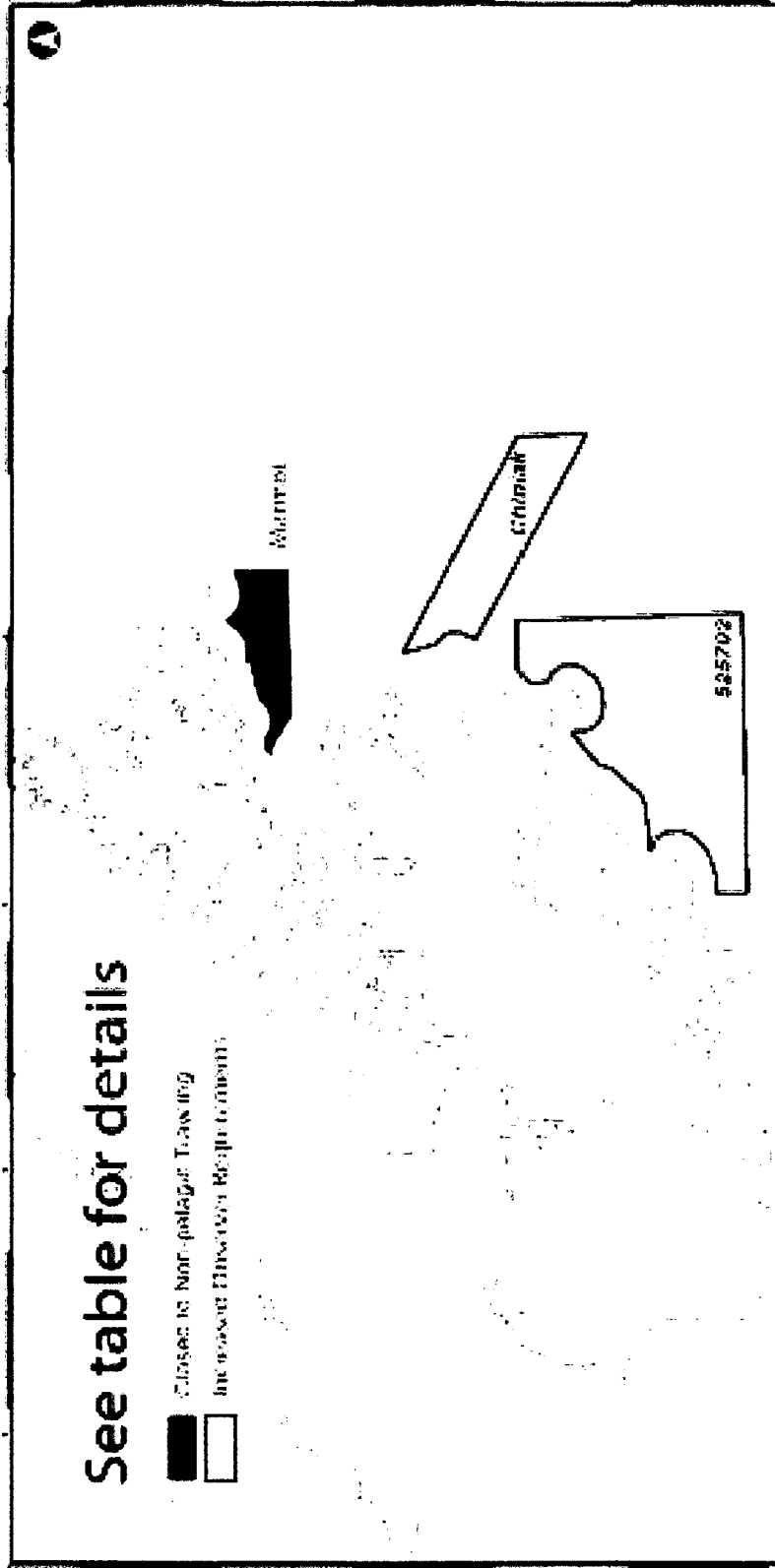
GOA Halibut Bycatch Caps

Final action in June 2012 – expected implementation in 2014

- Changed how PSC limits are established.
- Reduced the limit by 15% for the groundfish trawl and catcher vessel hook-and-line sectors.
 - Phased in over three years: 7% in year 1, 5% in year 2, and 3% in year 3
- Reduced limit by 7% for the catcher processor hook-and-line sector.

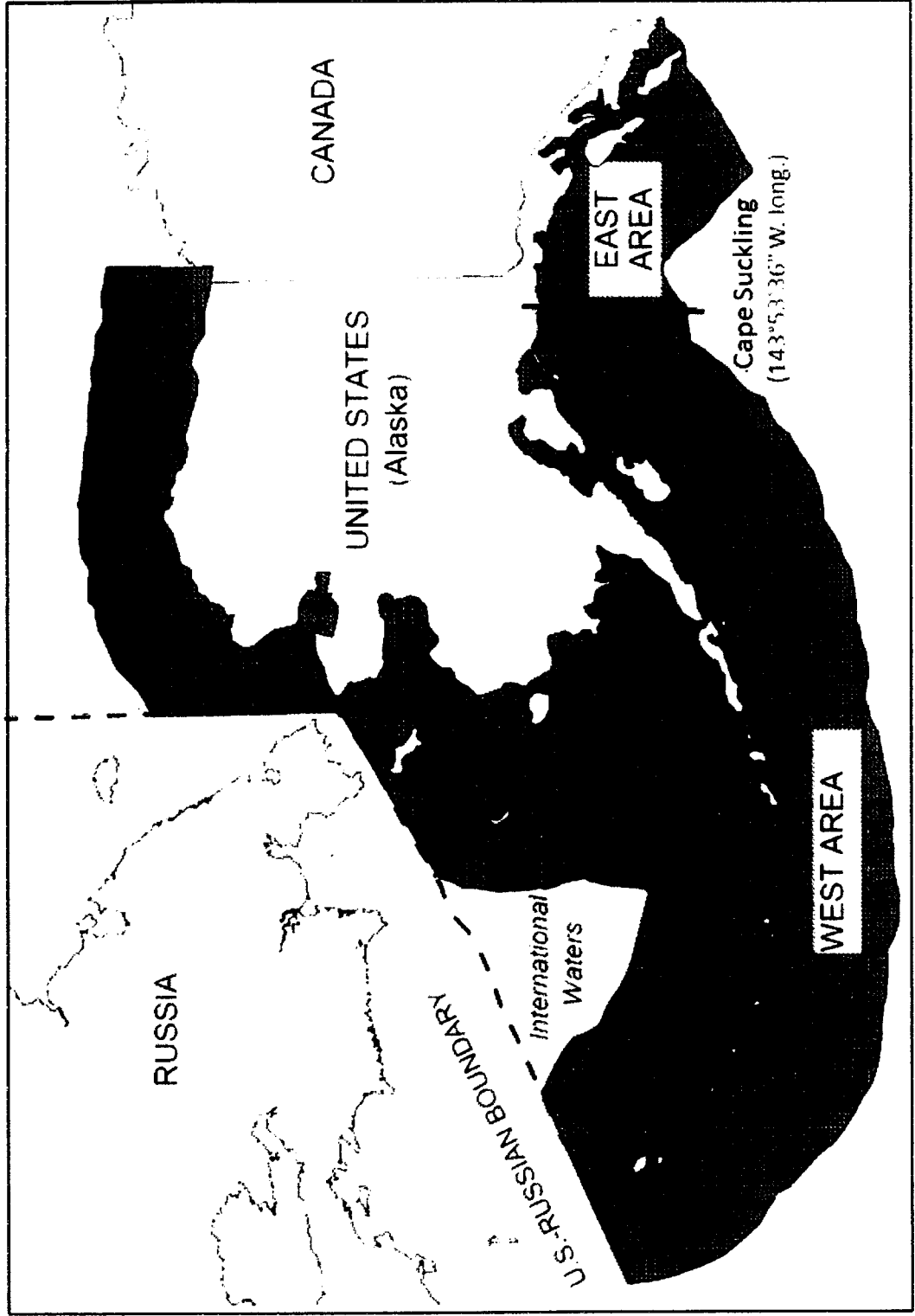


GOA Tanner Crab Bycatch



	Trawl	Pot
Marmot Bay	Closed	Closed to pot gear unless 30% observer coverage
Chiniak Gully	(vessels using pelagic trawl gear to fish for pollock are exempt)	
ADFG statistical area 525702	Closed to nonpelagic trawl gear unless 100% observer coverage	

Salmon FMP



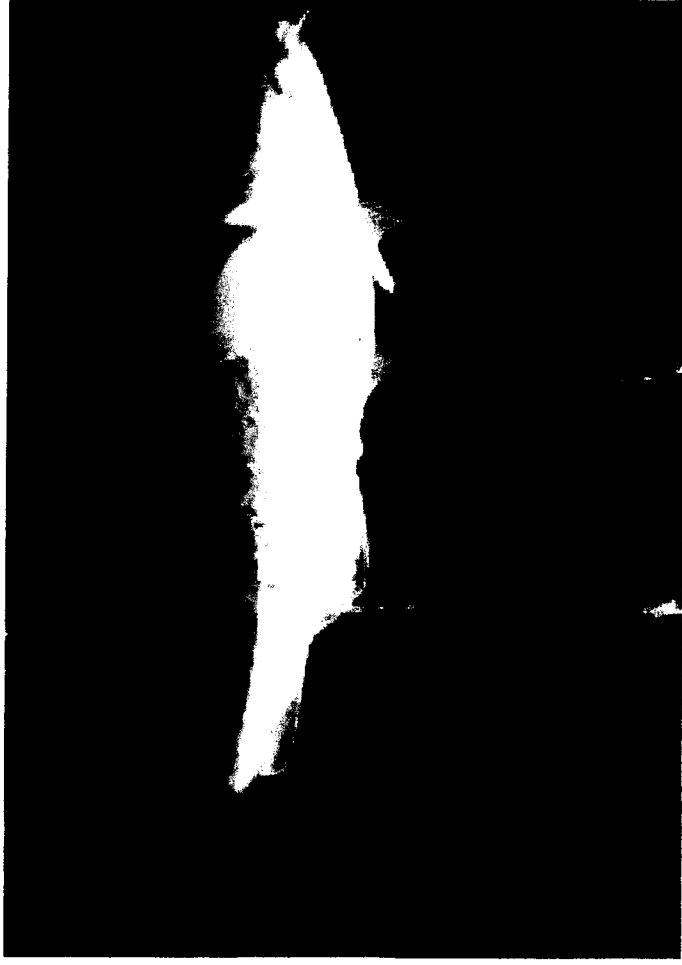
Salmon FMP

Final Action December 2011 – proposed rule April 2012

- Preferred Alternative
 - Closely reflected status-quo
 - Removed three traditional commercial salmon net fisheries, allowing for current state management.
 - PWS
 - Cook Inlet
 - Alaska Peninsula
 - Closed remaining federal waters in the west to commercial salmon fishing.
 - Removed the sport fishery in the west.
 - Retained SE Alaska commercial salmon troll fishery and SE Alaska sport fishery that occur in federal waters under deferred management authority.
 - For SE Alaska, updated the FMP to fully comply with current MSA provisions and other federal requirements.

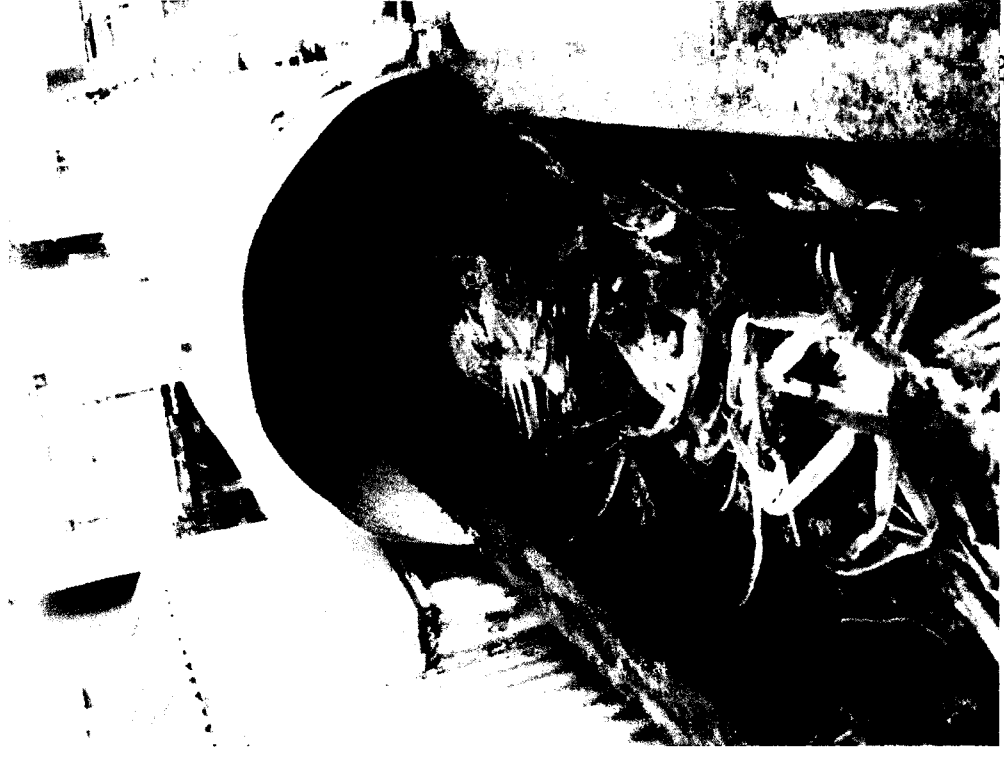
Jig management

- Jig Parallel fishery
“reverse parallel”
- Limiting gear on jig
vessels



Bering Sea Tanner Crab Rebuilding

- Declared overfished in 2010.
- Rebuilding plan initiated
 - Tanner crab model has been developed and stock has moved from Tier 4 into Tier 3 (model can estimate a spawner –recruit relationship for rebuilding analysis).
 - Tier 3 analysis redefined target biomass level (based on mean recruitment rather than average biomass).
 - The stock is no longer in an overfished condition so a rebuilding plan is no longer required.



More?

- October newsletter with revised 3-meeting outlook attached will be online next week: www.fakr.noaa.gov/npfmc/
- Upon request, more in-depth presentations from council staff can be provided.