

Vessels Fished in the Bristol Bay Drift Gillnet Fishery

1994-2011

November, 2012

Data Request From AIFMA

Prepared by: Commercial Fisheries Entry Commission

OEO / ADA Compliance Statement

The Commercial Fisheries Entry Commission is administratively attached to the Alaska Department of Fish and Game (ADF&G).

The Alaska Department of Fish and Game (ADF&G) administers all programs and activities free from discrimination based on race, color, national origin, age, sex, religion, marital status, pregnancy, parenthood, or disability. The department administers all programs and activities in compliance with Title VI of the Civil Rights Act of 1964, Section 504 of the Rehabilitation Act of 1973, Title II of the Americans with Disabilities Act of 1990, the Age Discrimination Act of 1975, and Title IX of the Education Amendments of 1972.

If you believe you have been discriminated against in any program, activity, or facility please write:

- ADF&G ADA Coordinator, P.O. Box 115526, Juneau, AK 99811-5526
- U.S. Fish and Wildlife Service, 4401 N. Fairfax Drive, MS 2042, Arlington, VA 22203
- Office of Equal Opportunity, U.S. Department of the Interior, 1849 C Street NW MS 5230, Washington DC 20240.

The department's ADA Coordinator can be reached via phone at the following numbers:

- (VOICE) 907-465-6077
- (Statewide Telecommunication Device for the Deaf) 1-800-478-3648
- (Juneau TDD) 907-465-3646
- (FAX) 907-465-6078

For information on alternative formats and questions on this publication, please contact the following person: Jennifer Shriver; CFEC, 8800 Glacier Hwy, Suite 108; Juneau, AK 99803.

Table of Contents

INTRODUCTION.....	3
GROSS EARNINGS.....	3
COMMERCIAL HARVESTS.....	3
VESSELS FISHED.....	4

List of Tables

TABLE 1. BRISTOL BAY DRIFT GILLNET FISHERY, VESSELS FISHED, TOTAL HARVEST, TOTAL AND AVERAGE EARNINGS IN REAL AND NOMINAL TERMS.....	5
TABLE 2. BRISTOL BAY DRIFT GILLNET TOTAL HARVESTS, AVERAGE HARVEST PER VESSEL, AND VESSEL PROPORTION OF TOTAL HARVEST.....	6

List of Figures

FIGURE 1. VESSELS FISHED AND REAL AVERAGE EARNINGS PER VESSEL IN THE BRISTOL BAY DRIFT GILLNET FISHERY.....	7
FIGURE 2. VESSELS FISHED AND AVERAGE HARVEST PER VESSEL IN POUNDS IN THE BRISTOL BAY DRIFT GILLNET FISHERY.....	7
FIGURE 3. BRISTOL BAY DRIFT GILLNET AVERAGE HARVEST PER VESSEL'S PROPORTION OF TOTAL HARVEST AND TOTAL HARVEST.....	8
FIGURE 4. AVERAGE HARVEST PER VESSEL'S PROPORTION OF TOTAL HARVEST AND VESSELS FISHED IN THE BRISTOL BAY DRIFT GILLNET FISHERY.....	8

Introduction

This data was prepared as the result of a request by David Harsila, President of the Alaska Independent Fishermen's Marketing Association (AIFMA) to the Commercial Fisheries Entry Commission (CFEC). The following provides insight into the total commercial harvest, gross earnings, and vessels fished in the Bristol Bay drift gillnet fishery for the years 1994-2011. Figures in this report may vary from other sources. Databases change over time as corrections are made, and the methods used to select the data can impact the results.

Gross Earnings

Table 1 provides a summary of vessels fished, estimated gross total earnings, and average earnings per vessel fished in the Bristol Bay drift gillnet fishery for the years 1994-2011. Estimated gross earnings calculations are presented first in nominal and then in real (inflation-adjusted) terms. Earnings were adjusted using the Consumer Price Index (CPI) with July 2011 as the base. Adjusting earnings for inflation provides a common metric to compare earnings between years.

The estimated gross total earnings reflect commercial harvests landed with valid CFEC limited entry permits. Gross total earnings are estimated using average annual ex-vessel prices as reported in the Commercial Operator's Annual Reports (COAR) for each management area, species, gear, and delivery type (gutted, in-the-round, etc.). These average prices are then applied to fish ticket data to estimate gross earnings. The data is aggregated by type of permit fished and will therefore include targeted and incidentally landed species (bycatch) that is commercially sold. Excluded from earnings calculations are harvests from hatchery cost recoveries, test fishing, confiscated or donated catch, and harvests taken but not sold.

Figure 1 presents a graph of vessels fished and real average earnings per vessel in the Bristol Bay drift gillnet fishery for the years 1994-2011.

Commercial Harvests

Table 2 displays commercial harvest statistics and vessels fished for the Bristol Bay drift gillnet fishery for the years 1994-2011. The total commercial harvest reflects commercial harvests landed with valid CFEC limited entry permits. Incidental catch that is commercially sold (bycatch) is included. Excluded from harvest calculations are harvests from hatchery cost recoveries, test fishing, confiscated or donated catch, and harvests taken but not sold. Total harvest is displayed in pounds. Average harvest per vessel was calculated by dividing the total commercial harvest by the count of vessels that made commercial landings. In order to compare whether the proportion of the total catch harvested by each vessel fished has changed over time the average harvest per vessel's proportion of total harvest was calculated. The average harvest per vessel's proportion of total harvest was calculated by dividing the average harvest per vessel by the total commercial harvest. This of course is merely a heuristic, individual vessels will not each catch an equal portion of the total harvest.

Figure 2 presents a graph of average harvest per vessel and vessels fished in Bristol Bay drift gillnet fishery for the years 1994-2011. Figure 3 displays total commercial harvests and the average harvest per vessel's

proportion of the total harvest. Figure 4 presents the average harvest per vessel's proportion of the total harvest against the count of vessels fished. The two data series statistics are inversely related; as the number of vessels fished increases, the proportion of harvest to each vessel decreases.

Vessels Fished

The figures for vessels fished (Tables 1 and 2 and Figures 1, 2, and 4) may provide a different count from other sources. Vessels fished was calculated by summing each unique ADF&G vessel identification number that is associated with commercial landings within each year. The ADF&G vessel identification number is a unique five-digit code issued by the CFEC. It is displayed on the fishing vessel and recorded on every fish ticket landing. The CFEC Research Section annually inspects the ADF&G vessel identification numbers on fish ticket data and corrects mistakes. The inspection process can reveal data entry errors or transpositions that have occurred either at the processors or during data entry at Alaska Department of Fish and Game. For example, an ADF&G vessel identification number might be '12345', but it was entered on a fish ticket as '12354'. The result of this transcription error would be to over-count vessels fished in the fishery.

Table 1. Bristol Bay Drift Gillnet Fishery, Vessels Fished, Total Harvest, Total and Average Earnings in Real and Nominal Terms

Year	Count of Vessels Fished	Nominal Estimated Gross Total Earnings	Real Estimated Gross Total Earnings	Nominal Average Earnings Per Vessel	Real Average Earnings Per Vessel
1994	1,923	\$174,569,899	\$265,762,673	\$90,780	\$138,202
1995	1,920	\$170,029,398	\$251,891,027	\$88,557	\$131,193
1996	1,923	\$130,612,195	\$187,950,117	\$67,921	\$97,738
1997	1,902	\$56,691,067	\$79,799,123	\$29,806	\$41,955
1998	1,869	\$57,202,946	\$79,187,524	\$30,606	\$42,369
1999	1,875	\$92,895,948	\$125,898,251	\$49,545	\$67,146
2000	1,842	\$68,412,338	\$89,443,589	\$37,140	\$48,558
2001	1,570	\$32,414,815	\$41,257,577	\$20,646	\$26,279
2002	1,176	\$25,432,417	\$31,903,068	\$21,626	\$27,128
2003	1,408	\$37,999,418	\$46,682,461	\$26,988	\$33,155
2004	1,371	\$65,669,641	\$78,332,717	\$47,899	\$57,135
2005	1,388	\$80,559,324	\$93,142,905	\$58,040	\$67,106
2006	1,473	\$96,064,034	\$106,648,544	\$65,217	\$72,402
2007	1,406	\$98,114,659	\$106,415,585	\$69,783	\$75,687
2008	1,396	\$100,139,700	\$102,852,109	\$71,733	\$73,676
2009	1,357	\$122,005,800	\$127,994,736	\$89,908	\$94,322
2010	1,404	\$134,136,756	\$139,004,198	\$95,539	\$99,006
2011	1,446	\$131,544,714	\$131,544,714	\$90,971	\$90,971

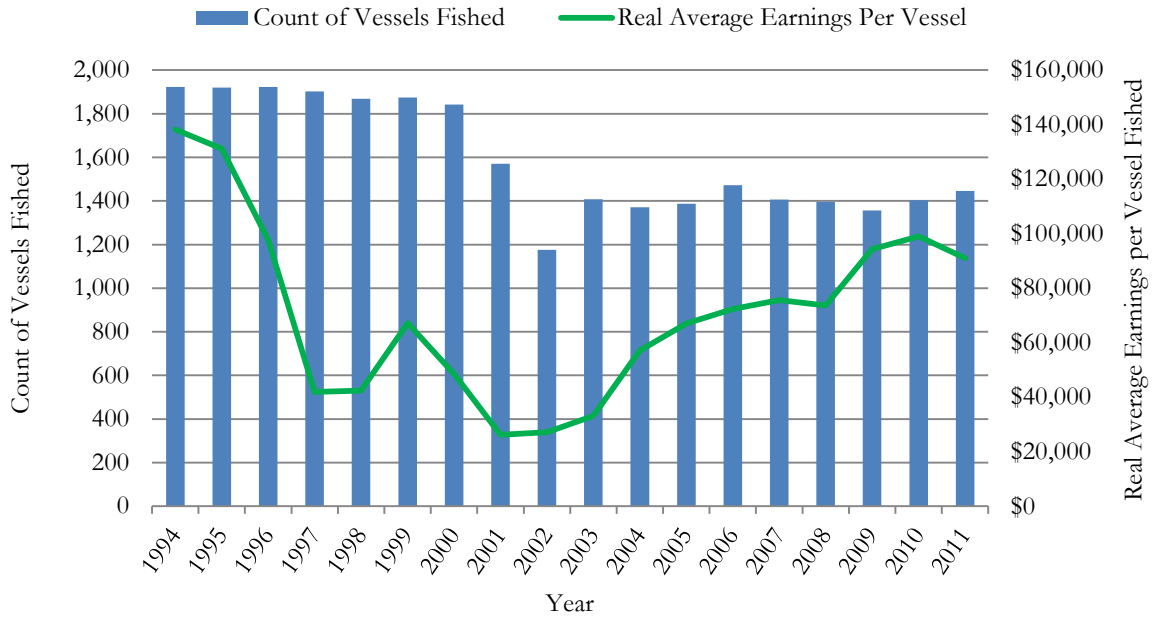
Table 1 provides a summary of vessels fished, estimated gross total earnings, and average earnings per vessel fished in the Bristol Bay drift gillnet fishery for the years 1994-2011. Estimated gross earnings calculations are presented first in nominal and then in real (inflation-adjusted) terms. Earnings were adjusted using the Consumer Price Index (CPI) with July 2011 as the base. Adjusting earnings for inflation provides a common metric to compare earnings between years. The estimated gross total earnings reflect commercial harvests landed with valid CFEC limited entry permits. Gross total earnings are estimated using average annual ex-vessel prices as reported in Commercial Operator's Annual Reports for each management area, species, gear, and delivery type (gutted, in-the-round, etc.). These average prices are then applied to fish ticket data to estimate gross earnings. The data is aggregated by type of permit fished and will therefore include targeted and incidentally landed species (bycatch) that is commercially sold. Excluded from earnings calculations are harvests from hatchery cost recoveries, test fishing, confiscated or donated catch, and harvests taken but not sold. The figures for vessels fished may provide a different count from other sources. CFEC inspects ADF&G vessel identification numbers on fish ticket data and makes corrections when necessary.

Table 2. Bristol Bay Drift Gillnet Total Harvests, Average Harvest per Vessel, and Vessel Proportion of Total Harvest

Year	Count of Vessels Fished	Total Commercial Harvest in Pounds	Average Harvest Per Vessel in Pounds	Average Harvest Per Vessel's Proportion of Total Harvest
1994	1,923	181,240,957	94,249	0.052%
1995	1,920	218,001,719	113,543	0.052%
1996	1,923	166,621,575	86,647	0.052%
1997	1,902	62,586,918	32,906	0.053%
1998	1,869	50,967,505	27,270	0.054%
1999	1,875	113,553,577	60,562	0.053%
2000	1,842	104,655,388	56,816	0.054%
2001	1,570	80,634,776	51,360	0.064%
2002	1,176	54,164,418	46,058	0.085%
2003	1,408	78,461,500	55,725	0.071%
2004	1,371	131,219,518	95,711	0.073%
2005	1,388	135,574,162	97,676	0.072%
2006	1,473	153,516,693	104,220	0.068%
2007	1,406	153,885,221	109,449	0.071%
2008	1,396	139,115,944	99,653	0.072%
2009	1,357	156,527,143	115,348	0.074%
2010	1,404	147,221,522	104,859	0.071%
2011	1,446	114,285,036	79,035	0.069%

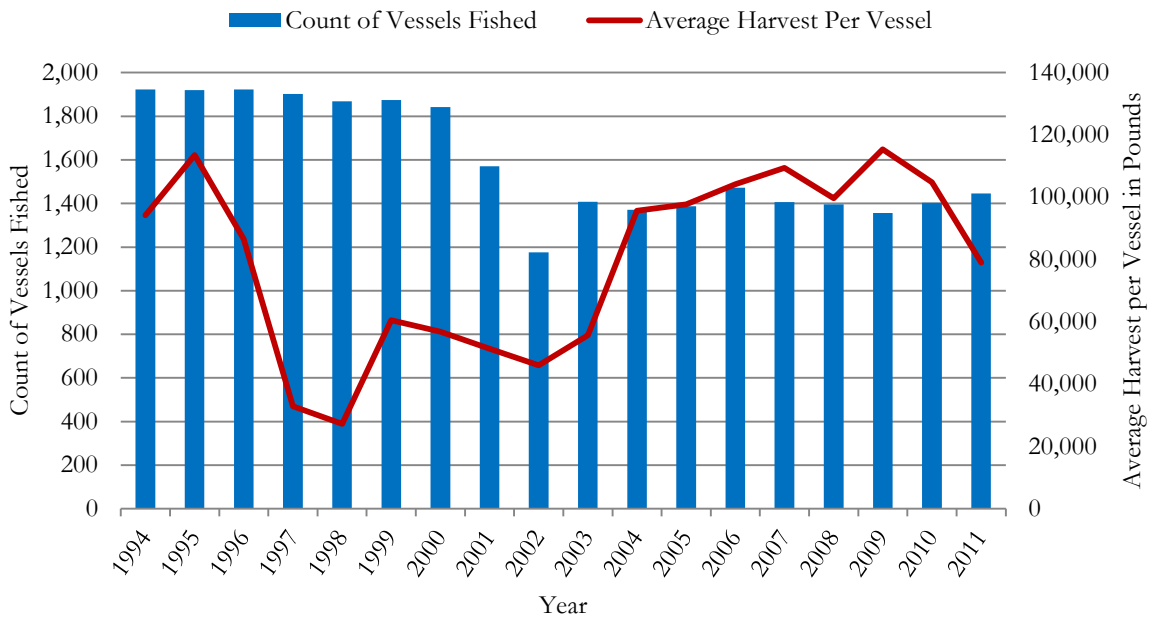
Table 2 displays commercial harvest statistics for the Bristol Bay drift gillnet fishery for the years 1994-2011. Total harvest is displayed in pounds. Average harvest per vessel was calculated by dividing the total commercial harvest by the count of vessels that made commercial landings. The average harvest per vessel's proportion of total harvest was calculated by dividing the average harvest per vessel by the total commercial harvest. The total commercial harvest reflects commercial harvests landed with valid CFEC limited entry permits. Incidental catch that is commercially sold (bycatch) is included. Excluded from harvest calculations are harvests from hatchery cost recoveries, test fishing, confiscated or donated catch, and harvests taken but not sold. The figures for vessels fished may provide a different count from other sources. CFEC inspects ADF&G vessel identification numbers on fish ticket data and makes corrections when necessary.

Figure 1. Vessels Fished and Real Average Earnings per Vessel in the Bristol Bay Drift Gillnet Fishery



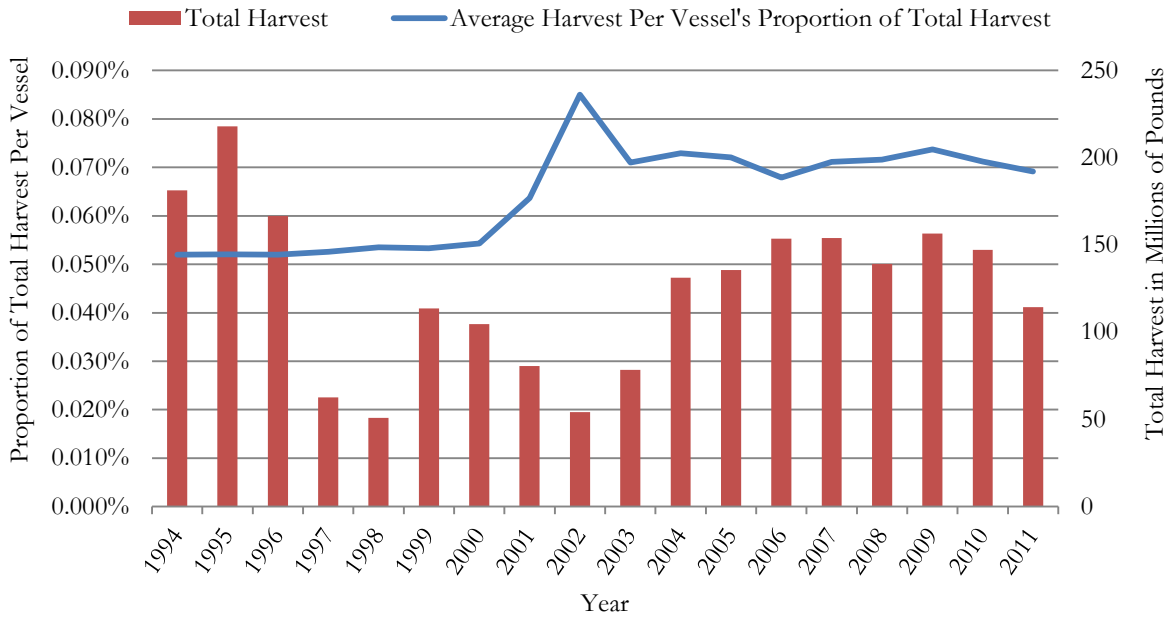
Source: CFEC, 2012. Real average earnings adjusted using CPI with July 2011 as base.

Figure 2. Vessels Fished and Average Harvest per Vessel in Pounds in the Bristol Bay Drift Gillnet Fishery



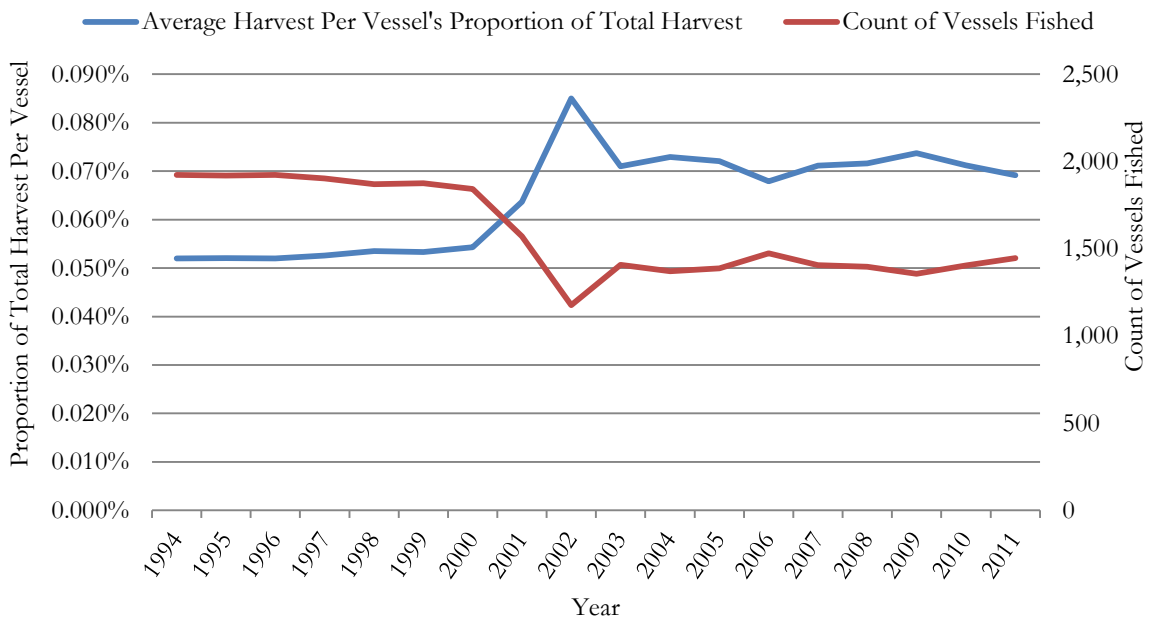
Source: CFEC, 2012.

Figure 3. Bristol Bay Drift Gillnet Average Harvest per Vessel's Proportion of Total Harvest and Total Harvest



Source: CFEC, 2012.

Figure 4. Average Harvest per Vessel's Proportion of Total Harvest and Vessels Fished in the Bristol Bay Drift Gillnet Fishery



Source: CFEC, 2012.

