

Abundance and Spawning Distribution of Susitna River Chum and Coho Salmon

by

Richard Yanusz, Rick Merizon, and Pete Cleary

Division of Sport Fish

Alaska Department of Fish and Game

Palmer Office



Oral Report

RC 4

TAB 7

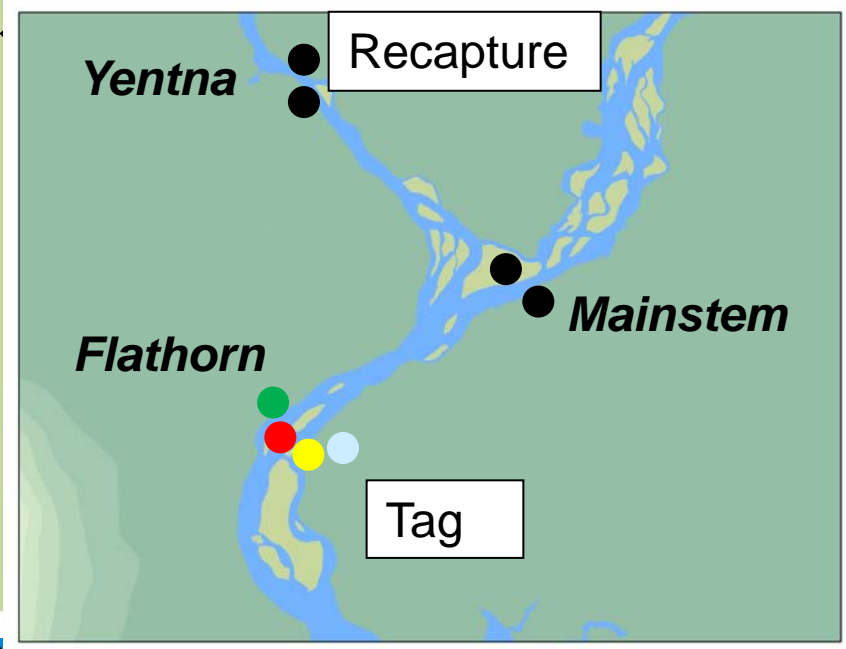
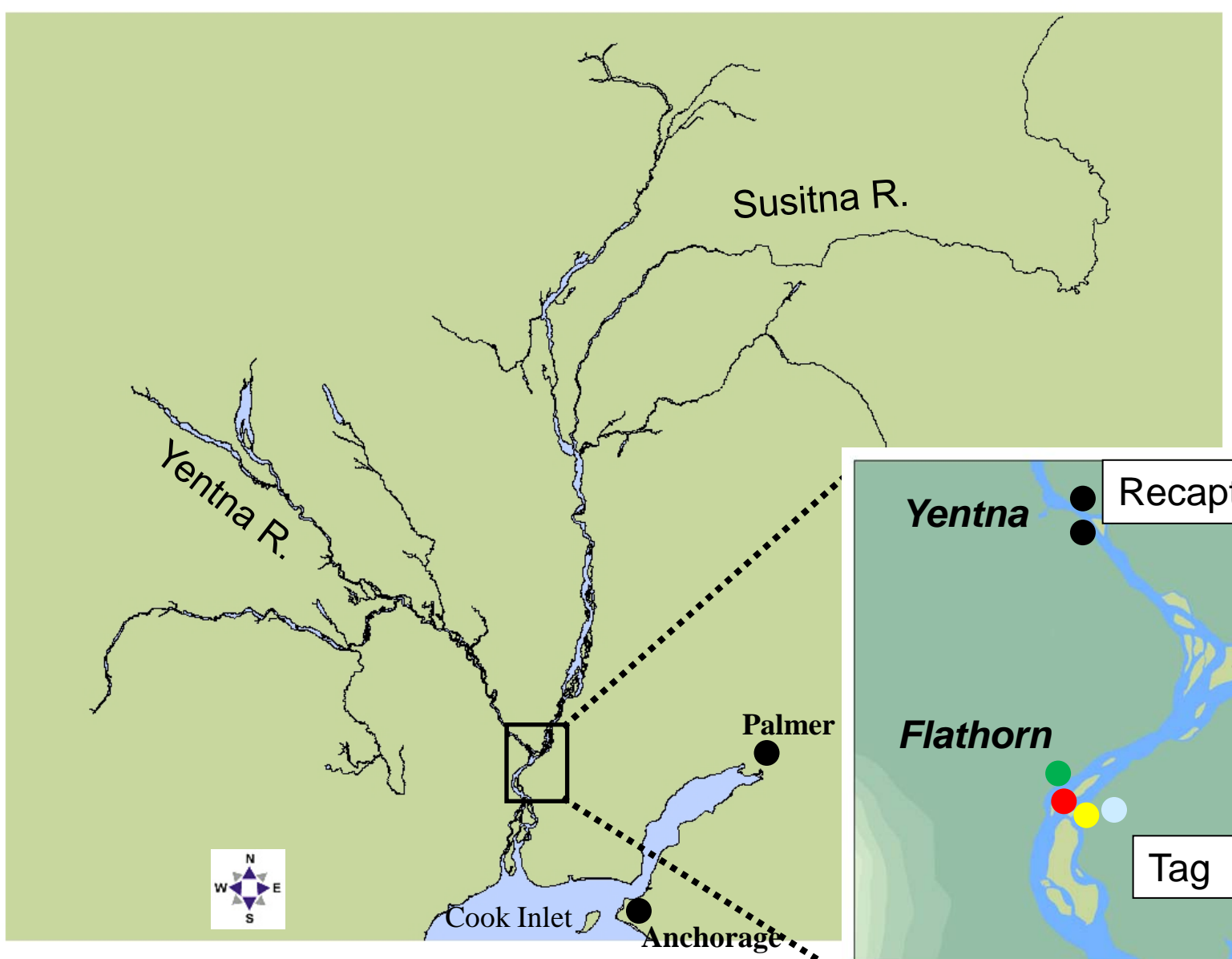
Acknowledgements

Alaska Legislature, five-year Capital Improvement Project

Alaska Sustainable Salmon Fund

Dingell-Johnson Program, Div. Sport Fish

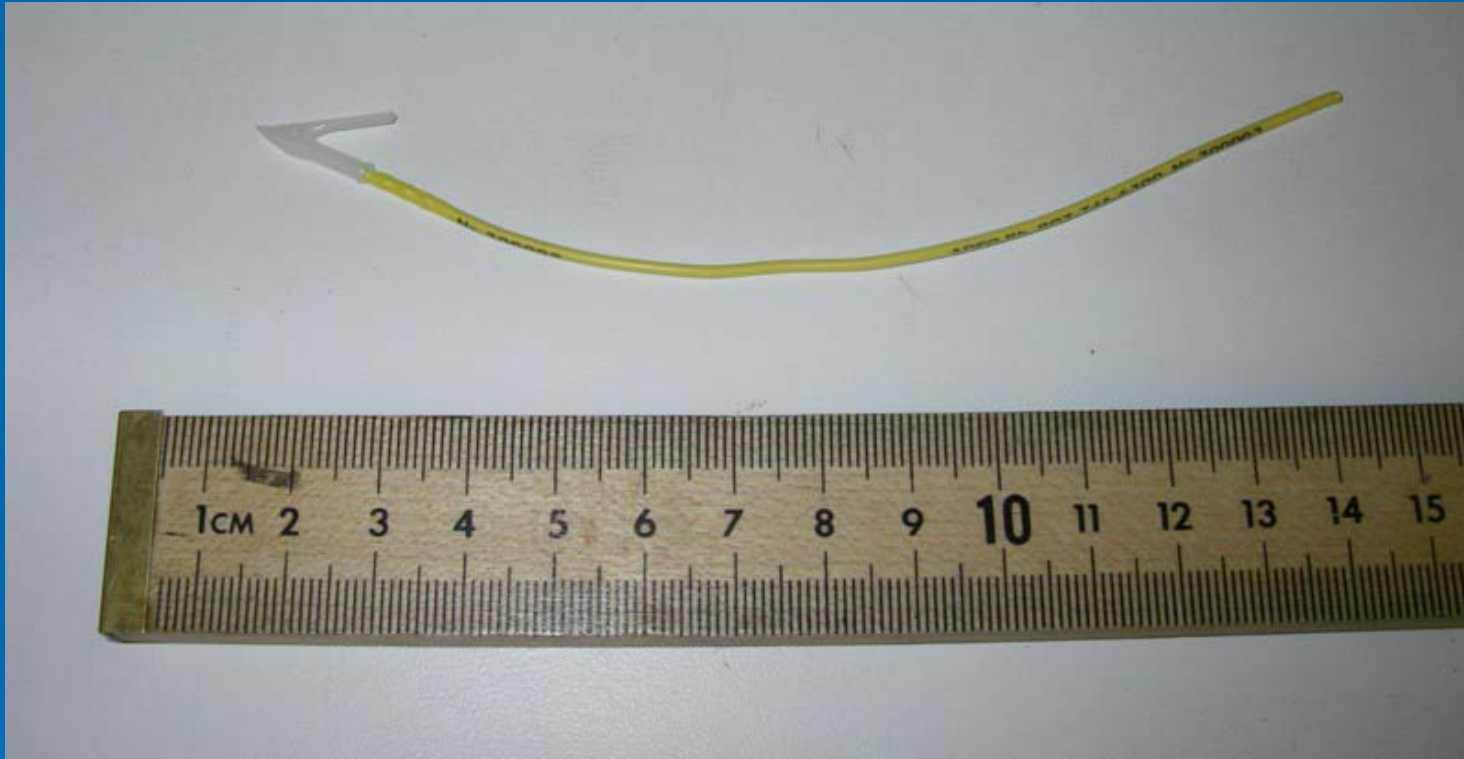
State of Alaska General Funds – Div. Commercial Fisheries



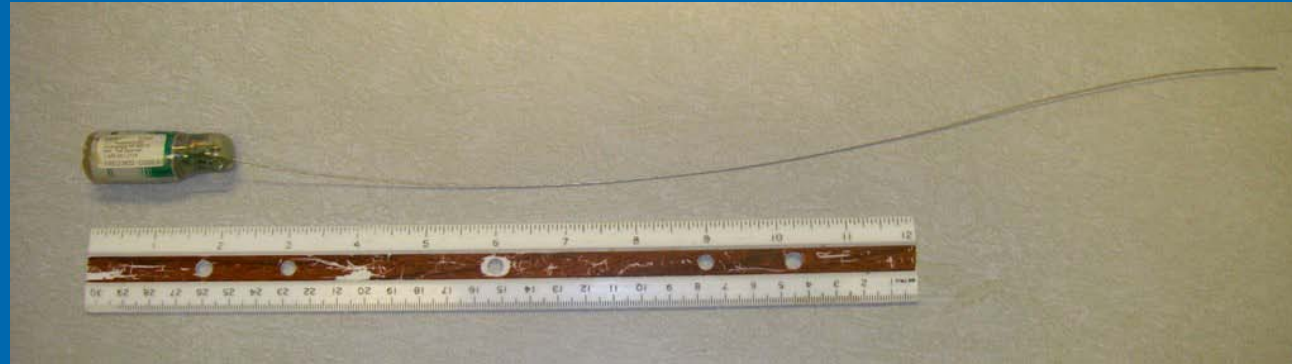
Capture Method



Dart Tags



Radio Tags



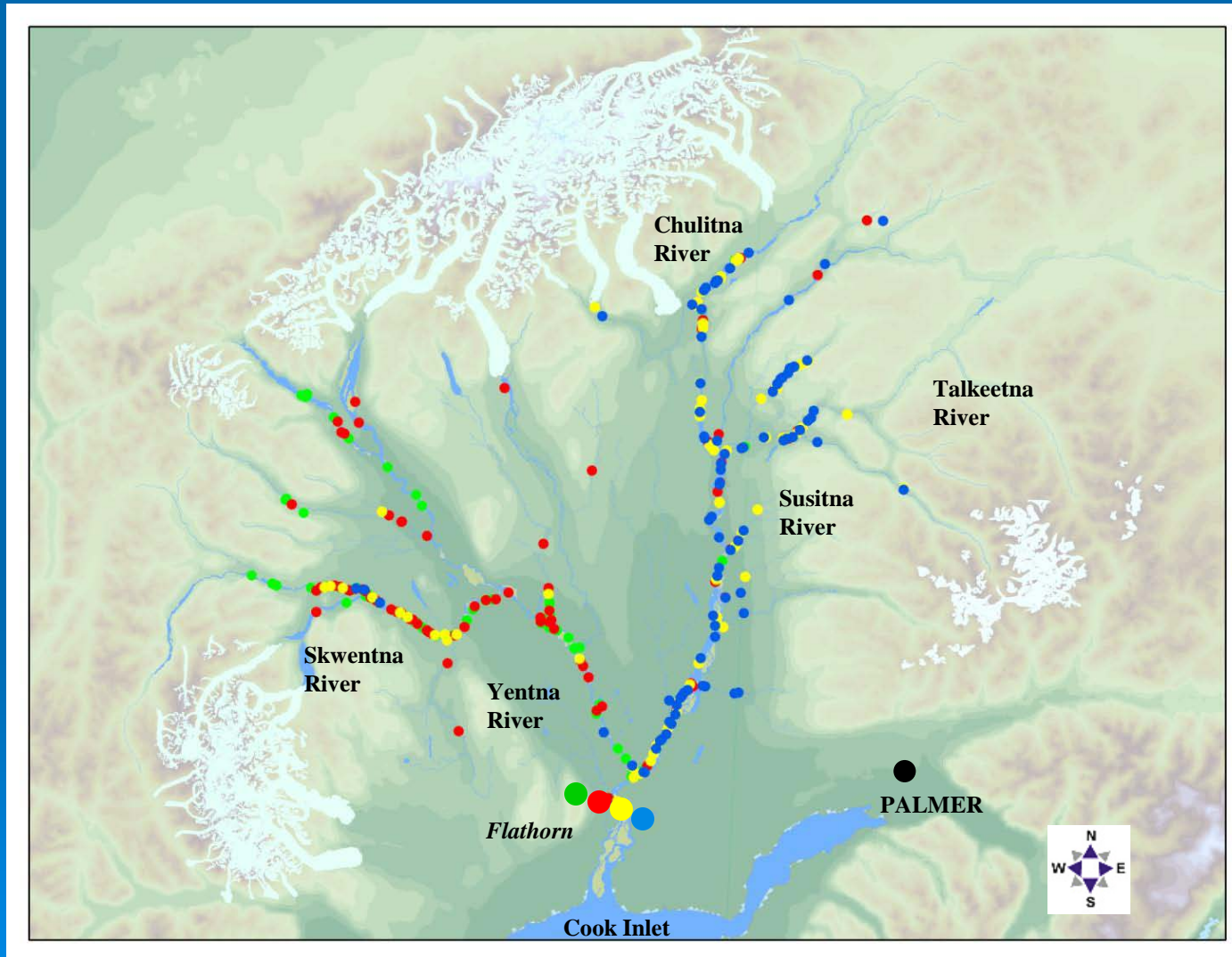
Spawning Distribution



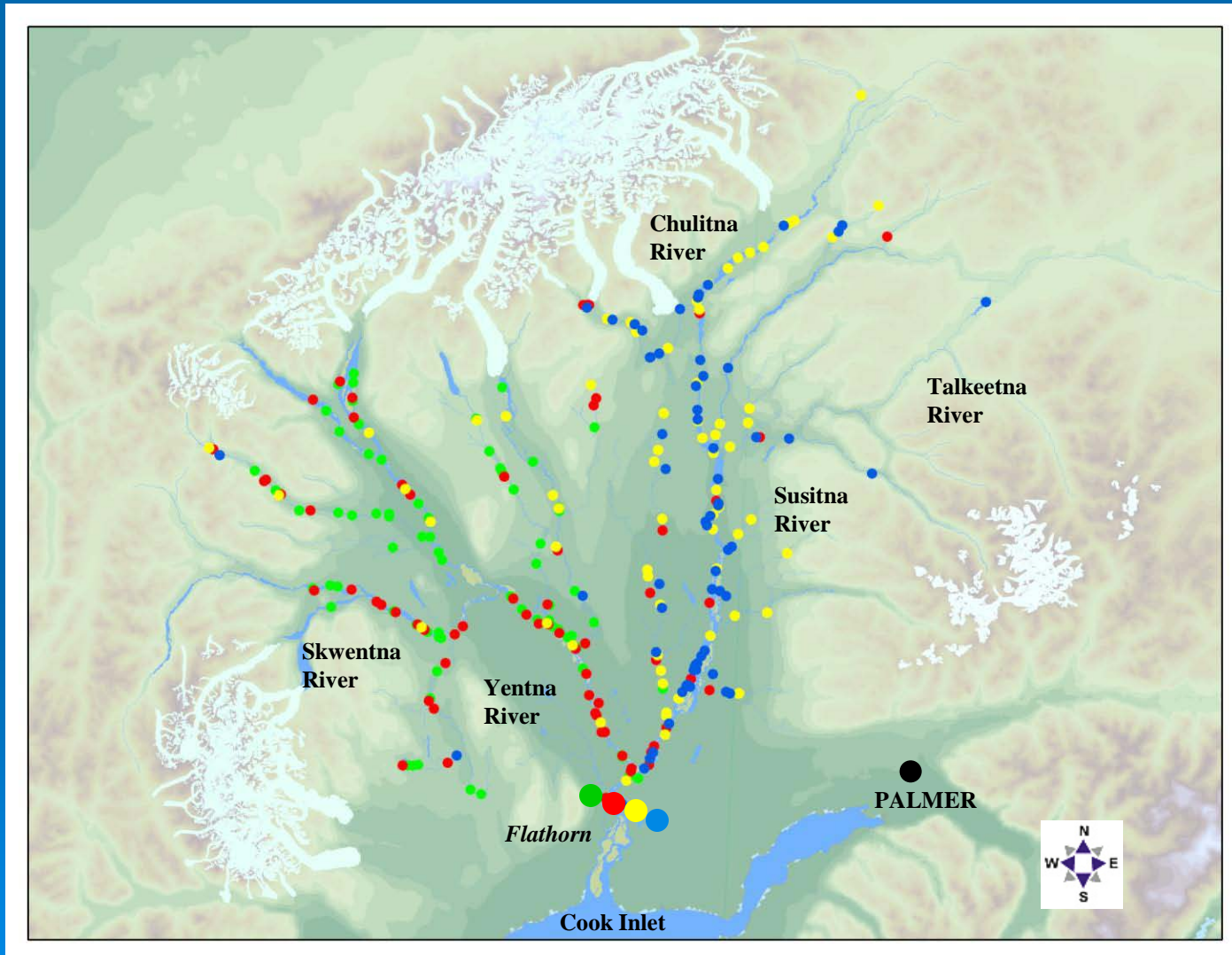
Preliminary 2010 Abundance (Inriver Run)

PORTION	CHUM SALMON	COHO SALMON
Entire Susitna Drainage (Flathorn)	357,000 95% C.I. 285,000-467,000	196,000 95% C.I. 153,000-283,000
Yentna River	202,000 57% 95% C.I. 110,000-292,000	136,000 69% 95% C.I. 99,000-206,000
Mainstem Susitna River	155,000 43% 95% C.I. 103,000-272,000	60,000 31% 95% C.I. 29,000-127,000

Chum Salmon Spawning Distribution by Wheel Tagged



Coho Salmon Spawning Distribution by Wheel Tagged



Conclusions for 2010

1. Total chum salmon inriver run = 357,000
 - a) 1/2 to Yentna
 - b) 1/2 to mainstem Susitna
2. Total coho salmon inriver run = 196,000
 - a) 2/3 to Yentna
 - b) 1/3 to mainstem Susitna
3. Chum salmon spawning locations are spread throughout the main channels and side sloughs
4. Coho salmon spawning locations are spread throughout the main channels, side sloughs, and in the smaller tributaries