

Harvest and Value

Trawl harvest by “target” fishery (2009 – 2012)

Area	Fed/State Waters	Target	2009		2010		2011		2012		
			# Vessels	Harvest (mt)	# Vessels	Harvest (mt)	# Vessels	Harvest (mt)	# Vessels	Harvest (mt)	
CG	Federal	Pollock (midwater)	36	10,747	39	29,616	46	41,135	49	52,887	
		Pollock (bottom)	26	4,052	27	4,778	28	9,111	28	3,367	
		Pacific Cod	37	5,881	38	14,688	41	10,916	48	12,521	
		Rockfish	34	13,077	35	16,615	30	14,857	33	19,017	
		Arrowtooth Flounder	29	14,039	27	15,409	34	28,496	28	16,967	
		Flathead Sole	8	1,416	9	2,070	9	687	4	1,101	
		Rex Sole	12	6,029	6	3,565	5	1,987	5	1,980	
		Shallow Water Flatfish	32	12,256	25	6,919	21	3,385	28	4,221	
		Deep Water Flatfish	1	C	3	175	1	C			
		Aika Mackerel			1	3	1	148			
		Sablefish	15	318	12	157	13	225	12	*	
	Other Species	5	*	2	12	1	*	1	C		
	<i>Federal Subtotal</i>			51	67,878	53	94,006	58	111,148	66	112,298
	State	Pollock (midwater)	29	7,847	34	9,710	33	4,565	47	12,322	
		Pollock (bottom)	11	747	11	1,198	7	776	14	345	
		Arrowtooth Flounder	5	106	2	C	2	C	1	C	
		Flathead Sole			1	C	1	C			
Shallow Water Flatfish		5	56	2	C	1	C	2	C		
<i>State Subtotal</i>			31	8,756	36	11,060	34	5,382	51	12,695	
CG Total			51	76,634	53	105,066	58	116,530	66	124,994	
WG	Federal	Pollock (midwater)	14	3,278	18	3,751	17	6,531	20	4,452	
		Pollock (bottom)	10	1,183	22	8,178	19	3,364	20	2,989	
		Pacific Cod	27	1,948	15	1,652	12	2,411	27	5,685	
		Rockfish	13	8,059	11	6,959	11	4,923	15	5,336	
		Arrowtooth Flounder	3	341	1	C	4	895	3	517	
		Flathead Sole	1	C	3	365	2	C	1	C	
		Rex Sole	2	C	2	C	1	C	1	C	
	Shallow Water Flatfish	1	C								
	<i>Federal Subtotal</i>			45	15,435	42	21,333	36	18,418	46	19,113
	State	Pollock (midwater)	22	6,456	22	5,430	20	5,721	24	12,590	
		Pollock (bottom)	14	3,500	25	11,063	22	5,571	24	8,394	
Pacific Cod		7	50	5	191	4	103	10	646		
<i>State Subtotal</i>			24	10,006	26	16,684	22	11,395	27	21,630	
WG Total			45	25,441	42	38,017	36	29,813	46	40,743	
Grand Total			143	104,802	143	147,021	132	150,823	146	169,800	

NOTES:

- ‘C’ indicates confidential data; asterisk indicates data that was redacted to preserve confidentiality of other fields.
- GRAND TOTAL includes trawl harvest in the West Yakutat district, all of which occurred in Federal waters. West Yakutat target fisheries include pollock and rockfish.
- Catch in state waters was taken by vessels that deliver to shore-based processors

GOA pollock and Pacific cod harvests from State waters (2009 through 2012)

Area	Waters	Year			
		2009	2010	2011	2012
Pollock					
CG	Federal	14,799	34,394	50,246	56,254
	State	8,594	10,908	5,341	12,667
CG Total		23,394	45,302	55,587	68,921
CG State % of Total		36.7%	24.1%	9.6%	18.4%
WG	Federal	4,461	11,929	9,894	7,441
	State	9,956	16,492	11,292	20,985
WG Total		14,417	28,421	21,186	28,425
WG State % of Total		69.1%	58.0%	53.3%	73.8%
Pacific cod					
CG	Federal	5,881	14,688	10,916	12,521
CG Total		5,881	14,688	10,916	12,521
CG State % of Total		0.0%	0.0%	0.0%	0.0%
WG	Federal	1,948	1,652	2,411	5,685
	State	50	191	103	646
WG Total		1,998	1,844	2,514	6,331
WG State % of Total		2.5%	10.4%	4.1%	10.2%

Percent of ex-vessel value paid to shoreside delivering catcher vessels (2009 – 2012)

Year	Central GOA		Western GOA	
	Pollock	Other GF	Pollock	Other GF
2009	38%	62%	85%	15%
2010	49%	51%	93%	7%
2011	42%	58%	85%	15%
2012	53%	47%	70%	30%
Average	49%	51%	82%	18%

Note: West Yakutat district not shown. West Yakutat accounted for 2.5% of average GOA pollock trawl harvest (2008-2012)

Trawl groundfish delivered by Catcher Vessels to shore-based processors (2009 – 2012)

Community	2009	2010	2011	2012	Total
Kodiak	64,608	90,223	96,431	101,355	352,617
Sand Point	10,665	18,350	15,798	25,689	70,502
King Cove	4,919	9,210	7,236	11,213	32,578
Other	719	3,340	1,002	2,539	7,600
Total	80,911	121,123	120,467	140,796	463,297

Sand Point and King Cove received groundfish trawl deliveries from the pollock and Pacific cod target fisheries. Kodiak plants processed pollock, Pacific cod, rockfish, flatfish, and sablefish.

Other CGOA and WGOA communities receiving groundfish trawl deliveries include Akutan, Dutch Harbor/Unalaska, and Seward. Plants in these communities received groundfish from the pollock, Pacific cod, and rockfish (Seward only) target fisheries.

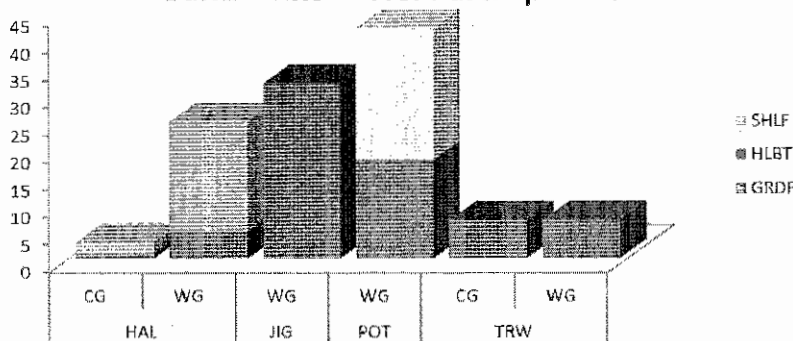
Gross first wholesale revenue from Catcher Vessel deliveries to shore-based processors (2009 – 2011)

City	Target	Percent GF Revenue
Kodiak	Pollock	44%
	Pacific Cod & Other GF	56%
Sand Point	Pollock	90%
	Pacific Cod	10%
King Cove	Pollock	82%
	Pacific Cod	18%
Other	Pollock	75%
	Pacific Cod & Rockfish	25%

Community Profiles

- **Kodiak**
 - 15 locally owned trawl vessels (2012)
 - Majority of non-salmon revenue comes from pollock
 - Nine of 11 Kodiak shore-based processors participate in Federal fisheries
 - Salmon is the main revenue generator
 - Majority of Kodiak processor revenue from Central GOA fisheries comes from hook-and-line halibut and sablefish (IFQ), trawl pollock, and pot Pacific cod
- **Sand Point**
 - Nearly half the ~1,000 residents work in commercial fishing, seafood processing, or both
 - 144 crewmember licenses issued in 2012
 - 314 commercial fishing permits issued in 2012
 - 70 for commercial saltwater finfish
 - 49 locally owned vessels participate in Federal fisheries – fixed gear and trawl (2012)
 - 7 vessels trawled in the Western and Central GOA

Sand Point Vessel Participation



(Number of vessels with landings by gear, FMP Subarea and species grouping)

- Aside from salmon, Pacific cod and pollock fisheries generated the most revenue for vessels owned by Sand Point residents
- Sand Point has 2 shore-based processing plants
 - Data on plant activity is confidential
- **King Cove**
 - 16 locally owned vessels participate in Federal fisheries – fixed gear and trawl (2012)
 - 114 crewmember licenses issued in 2012, from a population of ~1,000 residents
 - 131 commercial fishing permits issued in 2012
 - 28 for commercial saltwater finfish
 - King Cove has one large shore-based processing facility, which ranks it in the top 5 Alaska communities for Federal fishery processing activity
 - Data on vessel and plant activity is confidential due to single-processor

Management

GOA Trawlers

License Limitation Program (2000)

Area endorsements were removed from “latent” LLPs in 2009

Central GOA Rockfish Program

- Allocates 95% of the Central GOA TACs for Pacific ocean perch, northern rockfish, and dusky rockfish
- Also allocates portions of TAC for valuable secondary species (sablefish, Pacific cod, thornyhead, shortraker, and roughey rockfish)
- Quota is allocated to cooperatives based on members’ catch histories
- 57 qualified LLP licenses
 - 46 on catcher vessels
 - 11 on catcher/processors

Amendment 80 Fleet

- Trawl catcher/processor vessels (non-AFA) that have a BSAI C/P endorsement on their LLP license
- Qualified by processing more than 150 mt of non-pollock groundfish between 1997 and 2002
- 28 qualified vessels
 - 22 are licensed to fish with trawl gear in at least one GOA area
- In GOA fisheries –
 - Sideboards (based on 1998 – 2004) for pollock, Pacific cod, northern rockfish, Pacific ocean perch, dusky rockfish, and halibut PSC
 - 11 Amendment 80 vessels are allowed to target flatfish in GOA

GOA Trawl Prohibited Species Catch (PSC) Limits

- Chinook salmon
 - Pollock fishery – 25,000 fish
 - Western GOA: 6,684 fish
 - Central GOA: 18,316 fish
 - Average pollock Chinook salmon PSC (2003-2012): 18,500 fish
 - Non-pollock fisheries (not yet implemented) – 7,500 fish
 - Catcher/Processors (Gulf-wide): 3,600 fish
 - Catcher Vessels (Gulf-wide): 3,900 fish
 - Average non-pollock Chinook salmon PSC (2003-2012): 5,785 fish
 - No PSC limit in the West Yakutat district
- Halibut PSC limits (mortality)

Season	Percent	Metric tons - 2014 (2016+)		
		Total	Shallow-water Complex	Deep-water Complex
January 20 - April 1	27.5%	508 (469)	416 (384)	92 (85)
April 1 - July 1	20.0%	370 (341)	92 (85)	277 (256)
July 1 - September 1	30.0%	554 (512)	185 (170)	370 (341) *
September 1 - October 1	7.5%	139 (128)	139 (128)	Any remainder
October 1 - December 31	15.0%	277 (256)	Unapportioned	
Total	100%	1,848 (1,705)		

* Vessels participating in cooperatives in the CGOA Rockfish Program will receive 191.4 mt of the third season (July 1 through September 1) deep-water species fishery halibut PSC apportionment. CPs are allocated 74.1 mt of the 191.4 mt total; CVs are allocated 117.3 mt. The numbers in brackets reflect the PSC limits after reductions are fully phased-in in 2016.

Pollock

Pollock trawl annual catch limits and harvest

Area	2012			2013			2014
	ABC (TAC)	Catch	% Caught	ABC (TAC)	Catch	% Caught	ABC (TAC)
610 (Shumagin)	30,270	27,893	92%	28,072	7,711	27%	36,070
620 (Chirikof)	45,808	45,095	98%	51,443	53,112	103%	81,784
630 (Kodiak)	26,348	25,987	99%	27,372	29,888	109%	39,756
640 (WYK)	3,244	2,381	73%	3,385	2,940	87%	4,741
Total	105,670	101,356	96%	110,272	93,651	85%	162,351

100% of the pollock TAC is allocated for processing by the inshore component, which includes shore-based processing plants and several qualifying catcher/processor vessels. The offshore component has an incidental catch amount of pollock that is determined during the fishing year. Any pollock taken by the offshore component would be incidental to catch during directed fishing for non-pollock groundfish species, and is subject to maximum retainable amount (MRA) limits.

Western (area 610) and Central (areas 620 & 630) GOA pollock is apportioned by season and area. Western and Central GOA annual TAC is apportioned into four equal seasonal allowances of 25%. Apportionment of the seasonal TAC between areas 610, 620 and 630 are based on distribution of pollock biomass in the four most recent NMFS surveys of the relevant season (winter, summer).

A season: January 20 – March 10

2014/2015 area apportionments: 610 – 12%, 620 – 66%, 630 – 22%

B season: March 10 – May 31

2014/2015 area apportionments: 610 – 12%, 620 – 79%, 630 – 9%

C season: August 25 – October 1

2014/2015 area apportionments: 610 – 34%, 620 – 32%, 630 – 35%

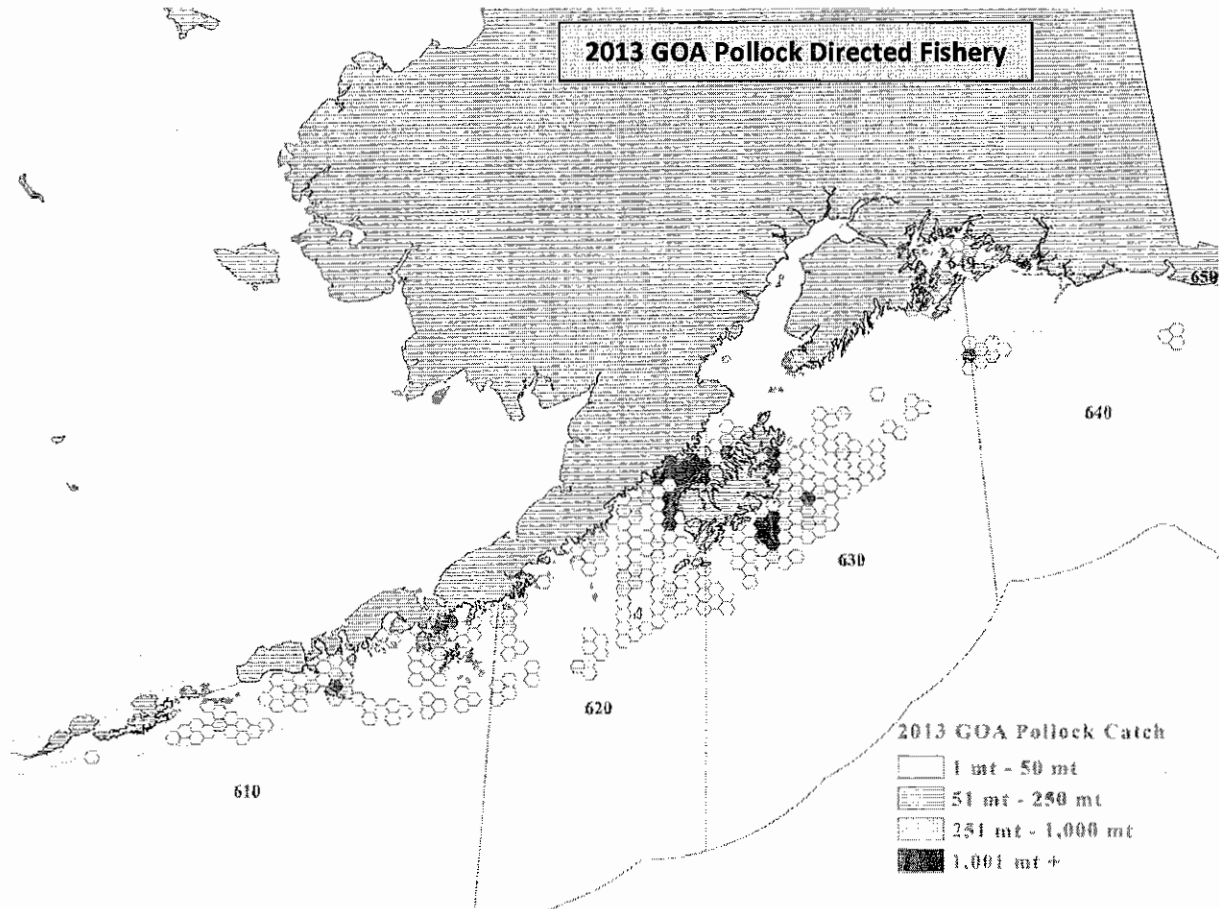
D season: October 1 – November 1

2014/2015 area apportionments: 610 – 34%, 620 – 32%, 630 – 35%

A seasonal underharvest (or overharvest) may be added to (or subtracted from) the subsequent seasonal allowance in a manner determined by the Regional Administrator. The rollover amount is limited to 20% of the subsequent seasonal apportionment for the statistical area. Any underharvested pollock above the 20% limit could be further distributed to other statistical areas, in proportion to the estimated biomass in the subsequent season in those statistical areas.

Number of catcher vessels targeting GOA pollock (2003 – 2013)

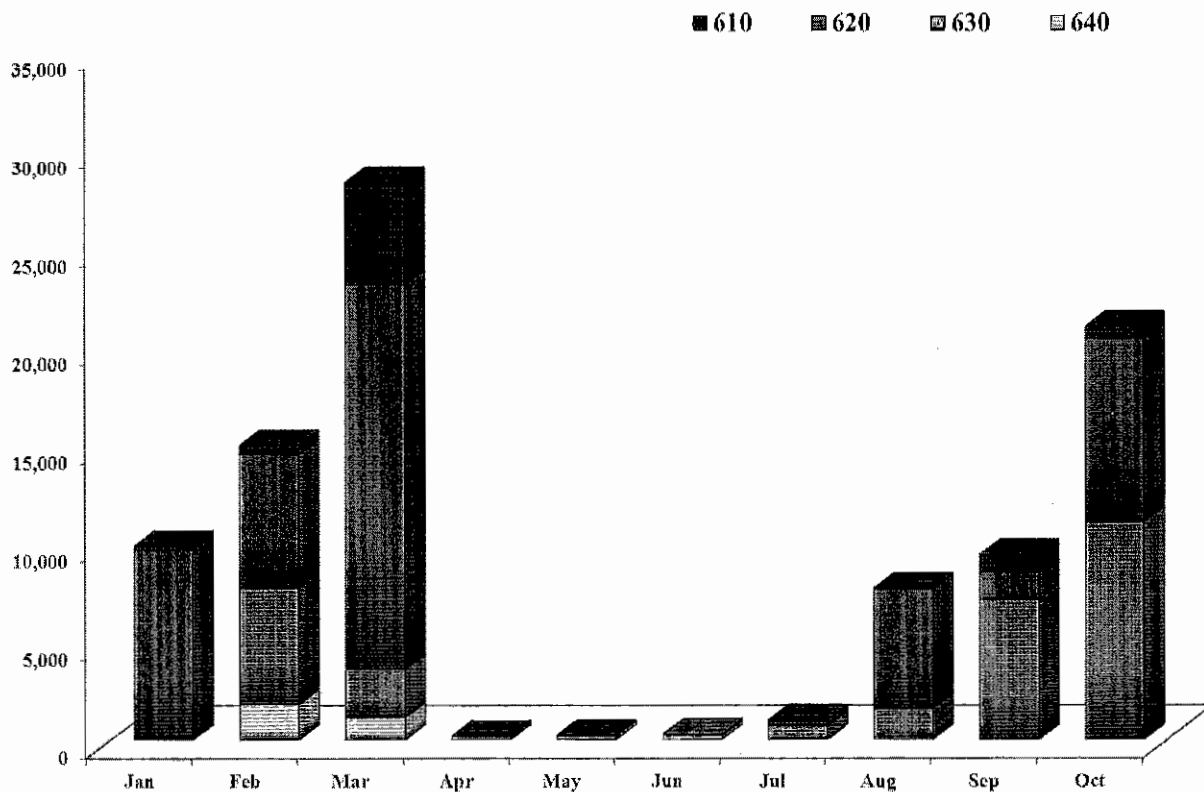
	610		620		630	
	Spring	Fall	Spring	Fall	Spring	Fall
2003	27	21	41	29	30	35
2004	21	20	41	31	32	38
2005	23	27	46	19	38	29
2006	26	23	44	20	25	29
2007	20	17	36	9	25	23
2008	15	14	36	16	23	27
2009	17	19	32	23	33	31
2010	22	21	36	33	36	33
2011	20	22	40	37	31	36
2012	22	26	39	53	33	42
2013	21	14	40	42	37	41



2013 Pollock Catch in GOA

Reporting areas	Allocation (mt)	Catch (mt)	%
610	24,676	7,709	31%
620	52,963	53,184	100%
630	29,248	29,749	102%
640	3,385	2,940	87%

Includes reapportionment of 3,396 mt from 610 C season underharvest to 620/630 D season



2012 Pollock Catch in GOA

