

JUNEAU/GLACIER BAY MANAGEMENT AREA - SPECIAL REGULATIONS

Fresh Water Special Regulations - Juneau Area

ANNEX LAKE (see map on page 20):

- The use of bait is allowed year-round.
- Cutthroat and rainbow trout limits (in combination): 2 per day, 2 in possession, 14 inch minimum and 22 inch maximum.

ANTLER LAKE (see map on page 21):

- The use of bait is allowed year-round.
- Cutthroat and rainbow trout limits (in combination): 2 per day, 2 in possession, 14 inch minimum and 22 inch maximum.

DISTIN LAKE (Admiralty Island):

- Bait prohibited, only unbaited, artificial lures or flies may be used year-round.
- Cutthroat trout limits: 1 per day, 1 in possession, 25 inch minimum.

DOROTHY LAKE (see map on page 20):

- The use of bait is allowed year-round.
- Cutthroat trout limits: 2 per day, 2 in possession, 14 inch minimum and 22 inch maximum.

FLORENCE LAKE (Admiralty Island):

- The use of bait is allowed year-round.
- Cutthroat and rainbow trout limits (in combination): 5 per day, 10 in possession, no size limit.

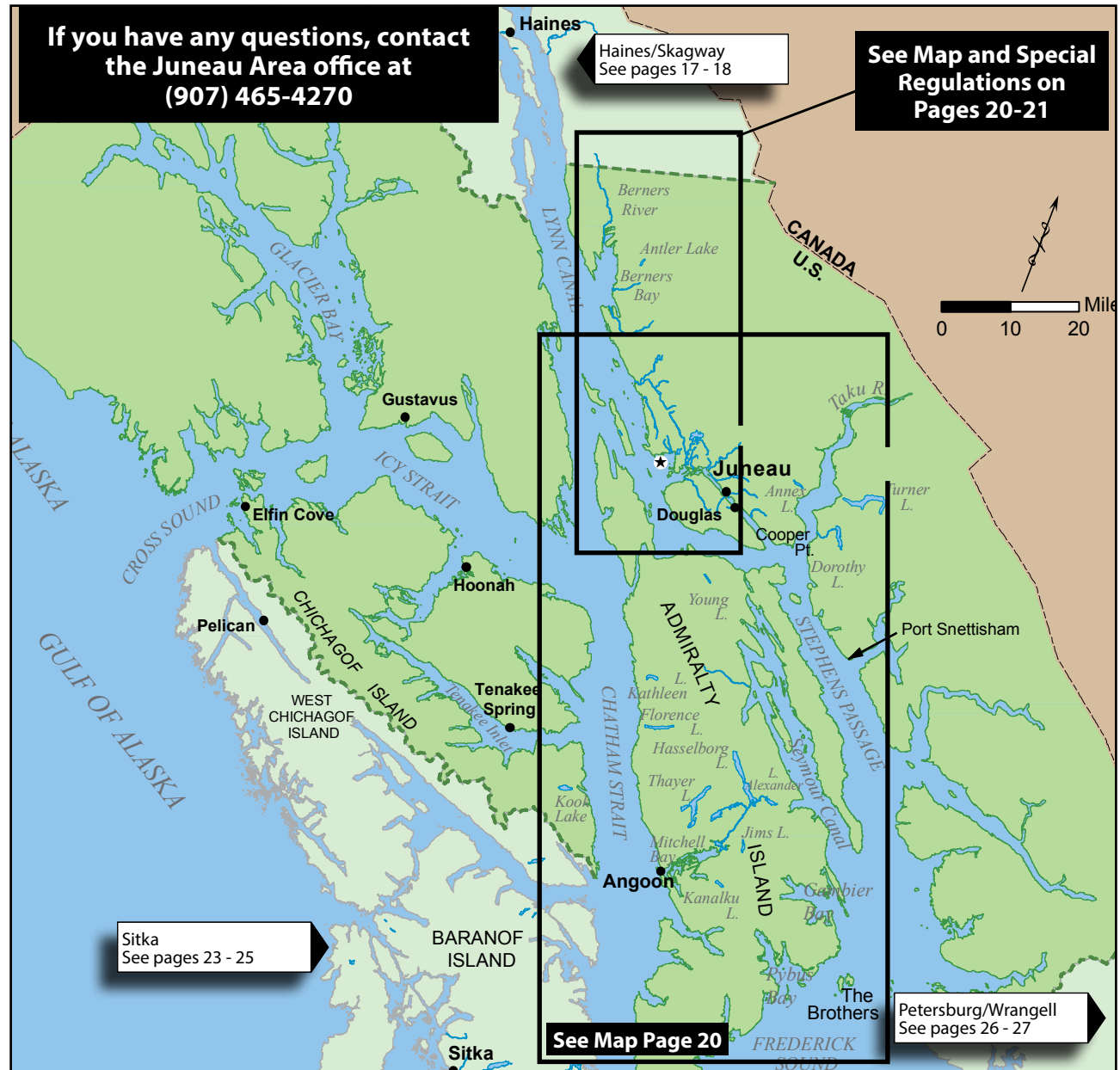
HASSELBORG LAKE (Admiralty Island):

- Bait prohibited, only unbaited, artificial lures or flies may be used year-round.
- Cutthroat trout limits: 1 per day, 1 in possession, 25 inch minimum.

If you have any questions, contact
the Juneau Area office at
(907) 465-4270

Haines/Skagway
See pages 17 - 18

See Map and Special
Regulations on
Pages 20-21



JUNEAU/GLACIER BAY MANAGEMENT AREA - SPECIAL REGULATIONS

Fresh Water Special Regulations - Juneau Area (continued)

JIMS LAKE (Admiralty Island):

- Bait prohibited, only unbaited, artificial lures or flies may be used year-round.
- Cutthroat trout limits: 1 per day, 1 in possession, 25 inch minimum.

KOOK LAKE (Chichagof Island):

- Bait prohibited, only unbaited, artificial lures or flies may be used year-round.
- Cutthroat and rainbow trout limits (in combination): 2 per day, 2 in possession, 14 inch minimum and 22 inch maximum.

LAKE ALEXANDER (Admiralty Island):

- Bait prohibited, only unbaited, artificial lures or flies may be used year-round.
- Cutthroat and rainbow trout limits (in combination): 2 per day, 2 in possession, 14 inch minimum and 22 inch maximum.

LAKE GUERIN (Admiralty Island):

- Bait prohibited, only unbaited, artificial lures or flies may be used year-round.
- Cutthroat trout limits: 1 per day, 1 in possession, 25 inch minimum.

SHELTER LAKE (see map on page 21):

- Bait prohibited, only unbaited, artificial lures or flies may be used year-round.
- Cutthroat and rainbow trout limits (in combination): 2 per day, 2 in possession, 9 inch minimum.

TURNER LAKE (see map at right):

- Bait prohibited, only unbaited, artificial lures or flies may be used year-round.
- Cutthroat trout retention prohibited. All cutthroat trout caught must be released immediately.

YOUNG LAKE (Admiralty Island):

- Bait prohibited, only unbaited, artificial lures or flies may be used year-round.
- Cutthroat and rainbow trout limits (in combination): 2 per day, 2 in possession, 14 inch minimum and 22 inch maximum.

Admiralty Island



Fresh Water Special Regulations - Juneau Area - Road System

ALL JUNEAU AREA ROAD SYSTEM DRAINAGES:

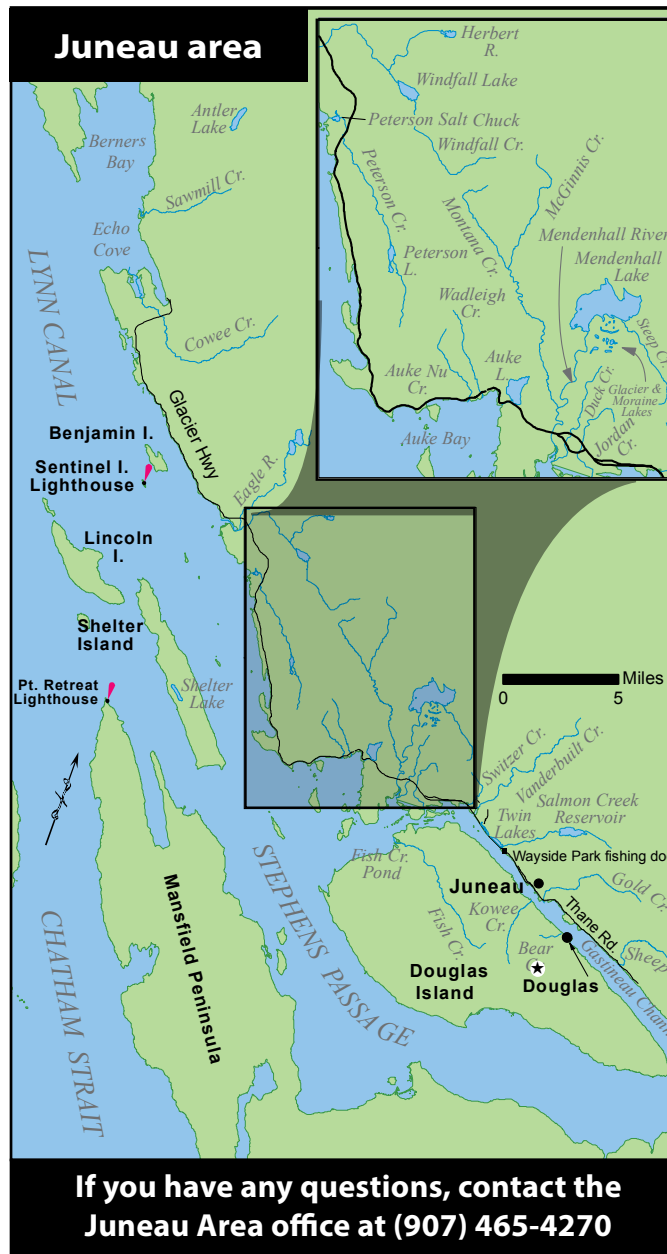
- Unless otherwise specified in this section, the following regulations apply to all drainages crossed by the Juneau road system.
 - King salmon limits: 4 per day 4 in possession, no size limit. Annual limit does not apply.
 - Coho salmon limits:
 - 16 inches or longer: 2 per day, 2 in possession.
 - Sockeye salmon limits:
 - 16 inches or longer: 1 per day, 1 in possession.
 - Cutthroat and rainbow trout limits (in combination): 2 per day, 2 in possession, 14 inch minimum and 22 inch maximum.
 - Dolly Varden limits: 2 per day, 2 in possession, no size limit.
 - Steelhead: Catch and release fishing only; all steelhead caught must be released immediately.

AUKE LAKE DRAINAGE:

- **Auke Lake drainage downstream of Glacier Highway to ADF&G stream mouth markers:**
 - **Closed to sport fishing.**

Note: ADF&G stream mouth markers are located 300 feet downstream of the Auke Creek weir.

- **Auke Lake drainage upstream of Glacier Hwy.** (including Auke Lake and its inlet streams and Auke Creek):
 - **Closed to sockeye salmon and Dolly Varden fishing.** All sockeye salmon and Dolly Varden caught must be released immediately.
 - Bait prohibited, only unbaited, artificial lures or flies may be used year-round.
 - See drainages crossed by the Juneau road system above for salmon and trout limits.



AUKE CREEK MOUTH—All waters within a 200-yard radius that extends seaward of the ADF&G stream mouth markers:

- **Snagging or attempting to snag is prohibited.** Any fish hooked elsewhere than its mouth must be released immediately.
- **Closed to sockeye salmon fishing.** All sockeye salmon caught must be released immediately.
- **Auke Bay:** See saltwater exceptions on page 22.

AUKE NU DRAINAGE:

- **Closed to salmon fishing.** All salmon caught must be released immediately.

BEAR CREEK (Douglas Island):

- **Closed to sport fishing.**

COWEE CREEK:

- Bait prohibited, only unbaited, artificial lures or flies may be used year-round, except:
 - Anglers under 16 years of age may use bait from September 15 through November 15.

DUCK CREEK:

- **Closed to sport fishing.**

FISH CREEK POND ONLY:

- June 1–August 31:
 - Use of bait, weighted hooks and lures, multiple (treble) hooks with a gap between point and shank larger than ½ inch are allowed.
- King salmon limits:
 - 4 per day, 4 in possession, no size limit. Nonresident annual limit does not apply.
 - King salmon hooked elsewhere than in the mouth (snagged) may be retained.

GLACIER LAKE:

- Bait prohibited, only unbaited, artificial lures or flies may be used year-round.

**Fresh Water Special Regulations -
Juneau Area - Road System (continued)**

HERBERT RIVER: See Windfall Lake drainage.

JORDAN CREEK:

- **Closed to sport fishing.**

KOWEE CREEK (Douglas Island):

- **Closed to salmon fishing.** All salmon caught must be released immediately.

MCGINNIS CREEK:

- Bait prohibited, only unbaited, artificial lures or flies may be used year-round.

MENDENHALL LAKE:

- **Closed to Dolly Varden fishing.** All Dolly Varden caught must be released immediately.
- Bait prohibited, only unbaited, artificial lures or flies may be used year-round.

MONTANA CREEK:

- Bait prohibited, only unbaited, artificial lures or flies may be used year-round.

MORAINE LAKE:

- Bait prohibited, only unbaited, artificial lures or flies may be used year-round.

PETERSON CREEK SALT CHUCK (Salt Lake):

- Bait prohibited, only unbaited, artificial lures or flies may be used year-round.

SALMON CREEK RESERVOIR:

- The use of bait is allowed year-round.

STEEP CREEK:

- **Closed to sport fishing.**

SWITZER CREEK:

- **Closed to sport fishing.**

TWIN LAKES:

- The use of bait is allowed year-round.
- Chum, coho, king, pink, and sockeye salmon limits (in combination): 16 inches or less: 10 per day, 10 in possession.
- Cutthroat and rainbow trout limits (in combination): 5 per day, 5 in possession, no size limit.

VANDERBILT CREEK:

- **Closed to sport fishing.**

WAYDELICH CREEK (Wadleigh Creek):

- **Closed to salmon fishing.** All salmon caught must be released immediately.

WINDFALL LAKE DRAINAGE:

- **Herbert River**—*in the section of Herbert River within 100 yards of its confluence with Windfall Creek:*
 - Windfall Creek regulations listed below apply.
- **Windfall Creek**—*from the outlet of Windfall Lake to the confluence of Herbert River:*
 - **Closed to sport fishing, June 1–July 31**, except;
 - Sport fishing is allowed during the month of June on Wednesdays and Saturdays.
 - During these days, the **Sockeye salmon limit** is 1 per day, 1 in possession, 16 inches or longer.
- **Windfall Lake and all inlet streams:**
 - Bait prohibited, only unbaited, artificial lures and flies may be used year-round.
 - Sockeye salmon retention prohibited. All sockeye salmon caught must be released immediately.

**Salt Water Special Regulations -
Juneau Area - Road System**

ALL SALT WATERS ADJACENT TO THE JUNEAU ROAD SYSTEM—*all salt waters adjacent to the Juneau City and Borough road system to a line ¼ mile offshore:*

- Cutthroat and rainbow trout limits (in combination): 2 per day, 2 in possession, 14 inch minimum and 22 inch maximum size limit.
- Dolly Varden limits: 2 per day, 2 in possession, no size limit.

AUKE BAY—*in all waters of Auke Bay east of a line from Waydelich (Wadleigh) Creek to an ADF&G marker located ¼ mile south of the mouth of Auke Creek:*

- **Closed to sockeye salmon fishing.** All sockeye salmon caught must be released immediately.
- **Closed to Dolly Varden fishing April 1–May 31.** All Dolly Varden caught from April 1-May 31 must be released immediately.

GASTINEAU CHANNEL—*Wayside Park fishing dock— in the waters of Gastineau Channel within 150 feet of the City and Borough of Juneau's Gastineau Channel Wayside Park fishing dock located near the Macaulay Salmon Hatchery:*

- Snagging or attempting to snag is prohibited; a fish hooked anywhere other than in the mouth must be released immediately.

SALT LAKE (See map on page 20)—*at the head of Mitchell Bay on Admiralty Island:*

- Coho salmon limits:
 - 16 inches or longer: 6 per day, 6 in possession.