

General Regulations - Salt Water

The Salt Water Fishing Season for all species is open year-round, except for halibut, lingcod, rockfish, Tanner crab, and resident king crab fisheries. **For Shellfish Regulations see pages 33-36.**

KING SALMON

- 28 inches or longer—Bag, possession, annual and size limits are established by emergency order, as specified in the Southeast Alaska King Salmon Management Plan.
- Less than 28 inches—Retention prohibited.
- Nonresident anglers—A harvest record is required (*see page 6*). Anglers should check with the nearest ADF&G office for current bag, possession, annual and size limit regulations.
- **Charter operators and crew members may not retain king salmon while clients are on board the vessel.**

COHO, CHUM, PINK, AND SOCKEYE SALMON

- 16 inches or longer: 6 of each species per day, 12 of each species in possession.

COHO, CHUM, PINK, AND SOCKEYE SALMON (IN COMBINATION)

- Less than 16 inches: 10 per day, 10 in possession.

STEELHEAD

- 36 inches or longer: 1 per day, 2 in possession. 2-fish annual limit, harvest record required (*see page 6*).

CUTTHROAT AND RAINBOW TROUT (IN COMBINATION)

- 11 inch minimum and 22 inch maximum: 2 per day, 2 in possession.

DOLLY VARDEN

- No size limit: 10 per day, 10 in possession.

SABLEFISH (BLACK COD)

- Alaska residents: No size limit: 4 per day, 4 in possession.



Nonresidents: 4 per day, 4 in possession - no size limit. 8 fish annual limit, harvest record required (*see page 6*).

SHARKS (EXCEPT SPINY DOGFISH)

- No size limit: 1 per day, 1 in possession. 2 shark annual limit, harvest record required (*see page 6*).

SPINY DOGFISH

- No size limit: 5 per day, 5 in possession, harvest record not required.



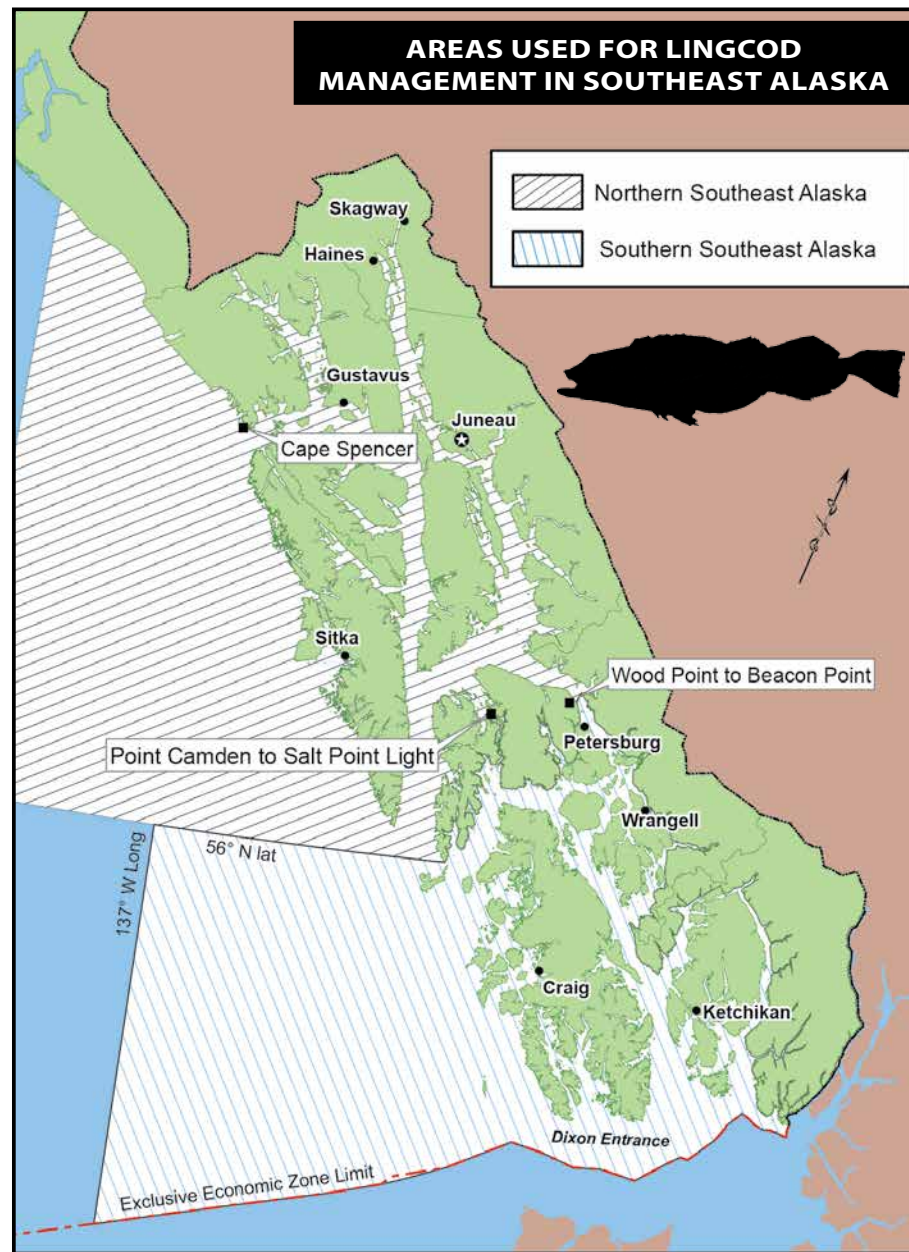
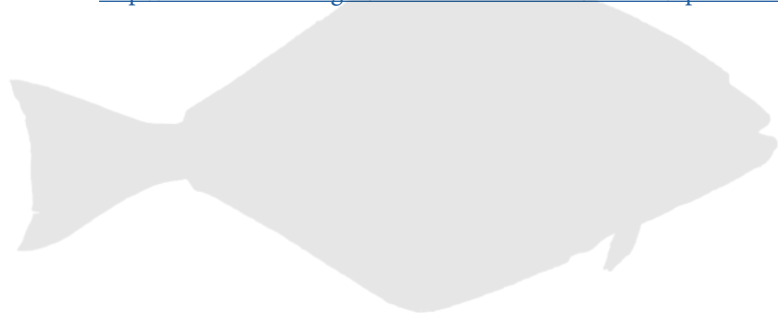
An ocean-bright coho salmon

LINGCOD

- **Season:** May 16–November 30.
- **Charter operators and crew members may not retain lingcod while clients are on board the vessel.**
 - **Northern Southeast Lingcod Area:**
 - **Alaska Residents**—No size limit: 1 per day, 2 in possession.
 - **Nonresidents**—1 per day, 1 in possession, 30–35 inches or 55 inches and longer, annual limit of 2 fish, one of which is 30–35 inches in length, and one that is 55 inches or greater in length, harvest record required (*see page 6*).
 - **Southern Southeast Lingcod Area**
 - **Alaska Residents**—No size limit: 1 per day, 2 in possession.
 - **Nonresidents**—1 per day, 1 in possession, 30–45 inches or 55 inches and longer, annual limit of 2 fish, one of which is 30–45 inches in length, and one that is 55 inches or greater in length, harvest record required (*see page 6*).

HALIBUT

- Pacific halibut fisheries are managed by the federal government under international treaty.
- Federal possession and landing requirements for sport-caught halibut differ from state regulations. Possession includes unpreserved AND preserved fish for halibut.
- Proxy fishing for halibut is not allowed.
- **Season:** February 1–December 31.
- **Unguided anglers**—limit is 2 per day, 4 in possession, no size limit.
- Consult federal regulations for the following: bag, size, and possession limits for guided (charter) anglers; possession and landing requirements, and inseason changes to the regulations.
- Federal halibut regulations are available from:
 - NOAA Fisheries Alaska Region, (907) 586-7228,
 - <http://www.fakr.noaa.gov/sustainablefisheries/halibut/sport.htm>



PELAGIC ROCKFISH

- Pelagic rockfish include black, blue, dark, dusky, widow, and yellowtail. These six species are uniformly gray, green, brown, or black (*see page 38*). All rockfish not listed as pelagic are considered non-pelagic.
- 5 per day, 10 in possession, no size limit.

NON-PELAGIC ROCKFISH (*All Southeast Waters*)

- **Charter operators and crew members may not retain non-pelagic rockfish while clients are on board the vessel.**
- As of January 1, 2013 anglers sport fishing from a charter vessel when releasing non-pelagic rockfish are required to have in possession, and utilize, a deepwater release mechanism to return and release these rockfish to the depth it was hooked, or to at least 100 feet in depth, whichever is shallower.
- A charter vessel must have at least one functional deepwater release mechanism on board and readily available for use when sport fishing activities are taking place.
- Upon request, a deepwater release mechanism must be presented to a local representative of the department or a peace officer of the state.
- **Southeast Waters**
 - **Alaska Residents:** 1 per day, 1 in possession, no size limit.
 - **Nonresidents:** 1 per day, 1 in possession, no size limit; annual limit of 1 yelloweye, which must be recorded, in ink, on the back of the angler's sport fishing license or on a harvest record card immediately at the time of harvest (*see page 6*).
- **Southeast Outside Waters**
 - **NEW** Retention of nonpelagic rockfish is prohibited in all Southeast Alaska Outside Waters from August 1 through August 31, 2018. **All anglers** fishing from a vessel in these waters during this time must have a functional deepwater release mechanism on board (regardless of target species) and **all anglers** must release nonpelagic rockfish at depth of capture or at least 100 feet using a deepwater release mechanism.

OTHER SPECIES AND OTHER SPECIES GROUPS NOT LISTED ABOVE

- No bag or possession limit, no size limit.

NEW Deepwater Release Device Required in 2020

Beginning January 1, 2020 all anglers sport fishing from a vessel in salt waters of Southeast Alaska will be required to have in possession, and utilize, a deepwater release mechanism to return and release nonpelagic rockfish to the depth it was hooked, or to at least 100 feet in depth, whichever is shallower. All vessels will be required to have at least one functional deepwater release mechanism on board and readily available for use when sport fishing activities are taking place.

