

GENERAL SEASONS, BAG LIMITS, AND SIZE LIMITS - SALT WATERS

The Salt Water Fishing Season for all species is open year-round, except for halibut, lingcod, geoduck clams, Tanner crab, and resident king crab fisheries. For Shellfish Regulations see pages 38-41.

KING SALMON

- 28 inches or longer—Bag, possession, annual and size limits are established by emergency order, as specified in the Southeast Alaska King Salmon Management Plan.
- Less than 28 inches—Retention prohibited.
- Nonresident anglers—A harvest record is required (*see page 5*). Anglers should check with the nearest ADF&G office for current bag, possession, annual and size limit regulations.
- Operators and crew members working on a charter vessel may not retain king salmon while clients are on board the vessel.

COHO, CHUM, PINK, AND SOCKEYE SALMON

- 16 inches or longer—6 of each species daily, 12 of each species in possession.

COHO, CHUM, PINK, AND SOCKEYE SALMON (IN COMBINATION)

- Less than 16 inches—10 daily, 10 in possession.

STEELHEAD

- 36 inch minimum size—1 daily, 2 in possession, 2-fish annual limit, harvest record required (*see page 5*).

CUTTHROAT AND RAINBOW TROUT (IN COMBINATION)

- 11 inch minimum and 22 inch maximum—2 daily, 2 in possession.

DOLLY VARDEN

- No size restrictions—10 daily, 10 in possession.

SABLEFISH (BLACK COD)

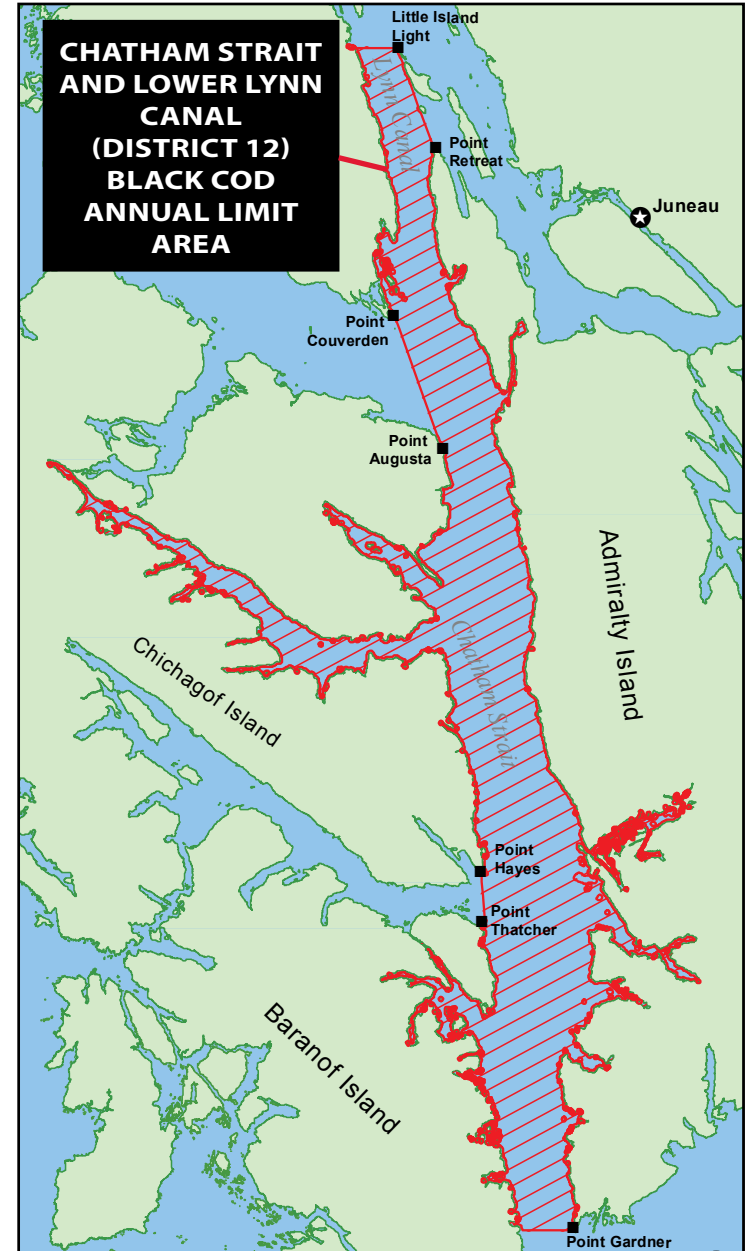
- No size restrictions—4 daily, 4 in possession.

Chatham Strait and Lower Lynn Canal—District 12 (see map to right)

- No size restrictions.
- Nonresident—4 daily, 4 in possession, **8 fish annual limit**, harvest record required (*see page 5*).

SHARKS (EXCEPT SPINY DOGFISH)

- No size restrictions—1 daily, 1 in possession, **2 shark annual limit**, harvest record required (*see page 5*).



GENERAL SEASONS, BAG LIMITS, AND SIZE LIMITS - SALT WATERS (continued)

SPINY DOGFISH

- No size restrictions—5 daily, 5 in possession, **harvest record not required** (see page 5).

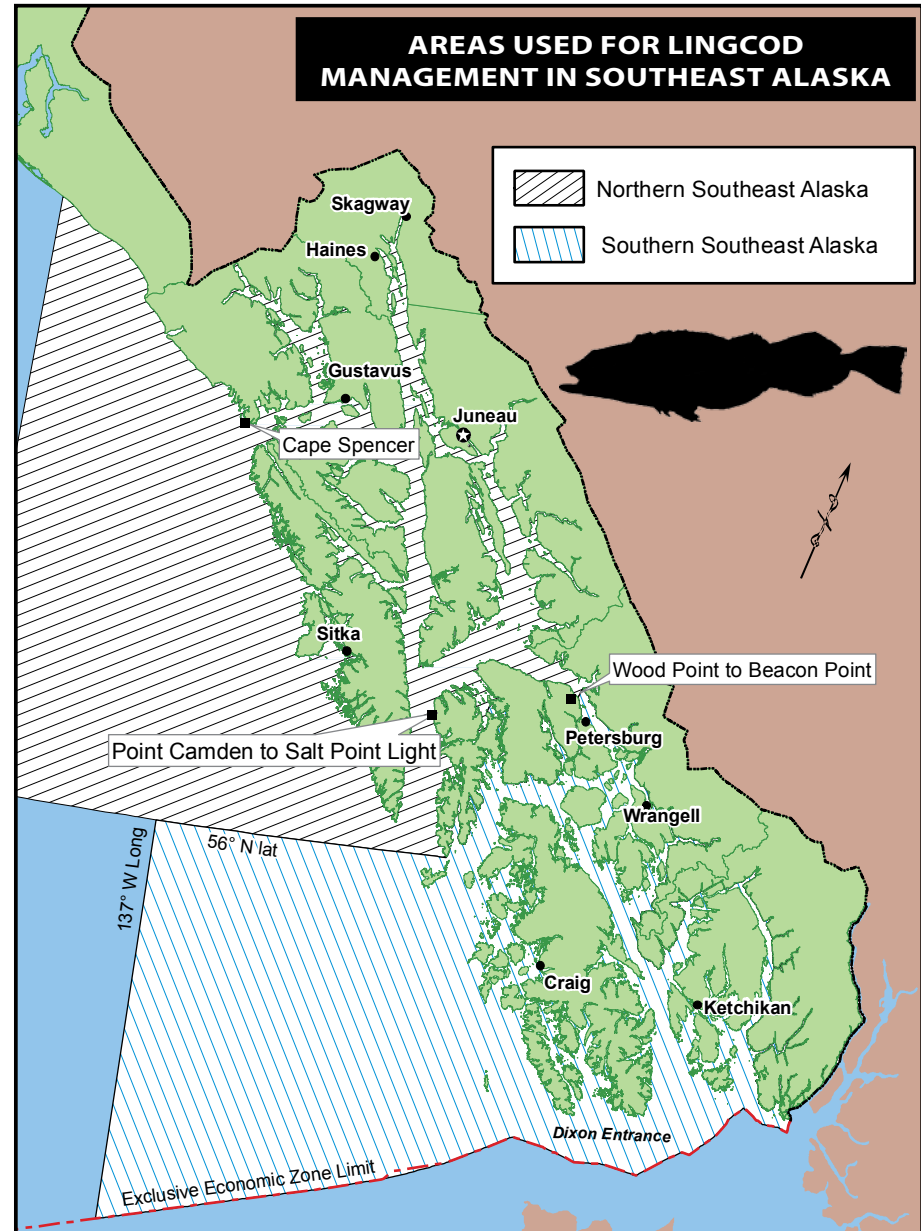
LINGCOD

- Season:** May 16–November 30. All anglers should consult with the nearest ADF&G office or the department website for current regulations. **Charter operators and crew members may not retain lingcod while clients are on board the vessel.**
 - Northern Southeast Lingcod Area**
 - Alaska Residents**—no size limit, 1 daily, 2 in possession.
 - Nonresidents**— 1 daily, 1 in possession, 30–35 inches or 55 inches and longer, annual limit of 2 fish, one of which is 30–35 inches in length, and one that is 55 inches or greater in length, harvest record required (see page 5).
 - Southern Southeast Lingcod Area**
 - Alaska Residents**—no size limit, 1 daily, 2 in possession.
 - Nonresidents**— 1 daily, 1 in possession, 30–45 inches or 55 inches and longer, annual limit of 2 fish, one of which is 30–45 inches in length, and one that is 55 inches or greater in length, harvest record required (see page 5).

HALIBUT

- Pacific halibut fisheries are managed by the federal government under international treaty.
- Federal possession and landing requirements for sport-caught halibut differ from state regulations. Possession includes unpreserved AND preserved fish for halibut.
- Proxy fishing for halibut is not allowed.
- Season:** February 1–December 31.
- Unguided anglers**—limit is 2 per day (no size limit), 4 in possession.
- Consult federal regulations for the following: bag, size, and possession limits for guided (charter) anglers; possession and landing requirements, and inseason changes to the regulations.
- Federal halibut regulations are available from:

NOAA Fisheries Alaska Region, (907) 586-7228,
<http://www.fakr.noaa.gov/sustainablefisheries/halibut/sport.htm>



GENERAL SEASONS, BAG LIMITS, AND SIZE LIMITS - SALT WATERS (continued)

PELAGIC ROCKFISH

- Pelagic rockfish include black, blue, dark, dusky, widow, and yellowtail. These six species are uniformly gray, green, brown, or black (*see page 36*). All rockfish not listed as pelagic are considered non-pelagic.
- No size restrictions—5 daily, 10 in possession.

NON-PELAGIC ROCKFISH (All Southeast Waters)

- All non-pelagic rockfish caught must be retained until the bag limit is reached. All anglers should consult with the nearest ADF&G office or the department website for current regulations. **Charter operators and crew members may not retain non-pelagic rockfish while clients are on board the vessel.**
- As of January 1, 2013 anglers sport fishing from a charter vessel when releasing non-pelagic rockfish are required to have in possession, and utilize, a deep water release mechanism to return and release these rockfish to the depth it was hooked, or to at least 100-feet in depth, whichever is shallower.
- A charter vessel must have at least one functional deep water release mechanism on board and readily available for use when sport fishing activities are taking place.
- Upon request, a deep water release mechanism must be presented to a local representative of the department or a peace officer of the state.
- **Southeast Outside Waters**
 - *Alaska Residents*—no size limit, 2 daily, only 1 may be a yelloweye; 4 in possession, of which no more than 2 may be yelloweye.
 - *For Nonresidents*—no size limit, 1 daily; 2 in possession, of which no more than 1 may be a yelloweye; annual limit of 1 yelloweye, which must be recorded, in ink, on the back of the angler's sport fishing license or on a harvest record card immediately at the time of harvest (*see page 5*).
- **Southeast Inside Waters**
 - *Alaska Residents*—no size limit, 3 daily, only 1 may be a yelloweye; 6 in possession, of which no more than 2 may be yelloweye.
 - *For Nonresidents*—no size limit, 2 daily, only 1 may be a yelloweye; 4 in possession, of which no more than 2 may be yelloweye; annual limit of 2 yelloweye, which must be recorded, in ink, on the back of the angler's sport fishing license or on a harvest record card immediately at the time of harvest (*see page 5*).

OTHER SPECIES AND OTHER SPECIES GROUPS NOT LISTED ABOVE

- No size restrictions—no bag or possession limit.

