

General Regulations - North Gulf Coast

Inclusive waters: Salt waters within 200 miles of shore from the longitude of Gore Point to the longitude of Cape Fairfield. All fresh waters between Gore Point and Cape Fairfield. This includes the major port of Seward.

Fishing for all species is open year-round unless otherwise noted below.

Snagging: Snagging is legal year-round in North Gulf Coast salt waters.

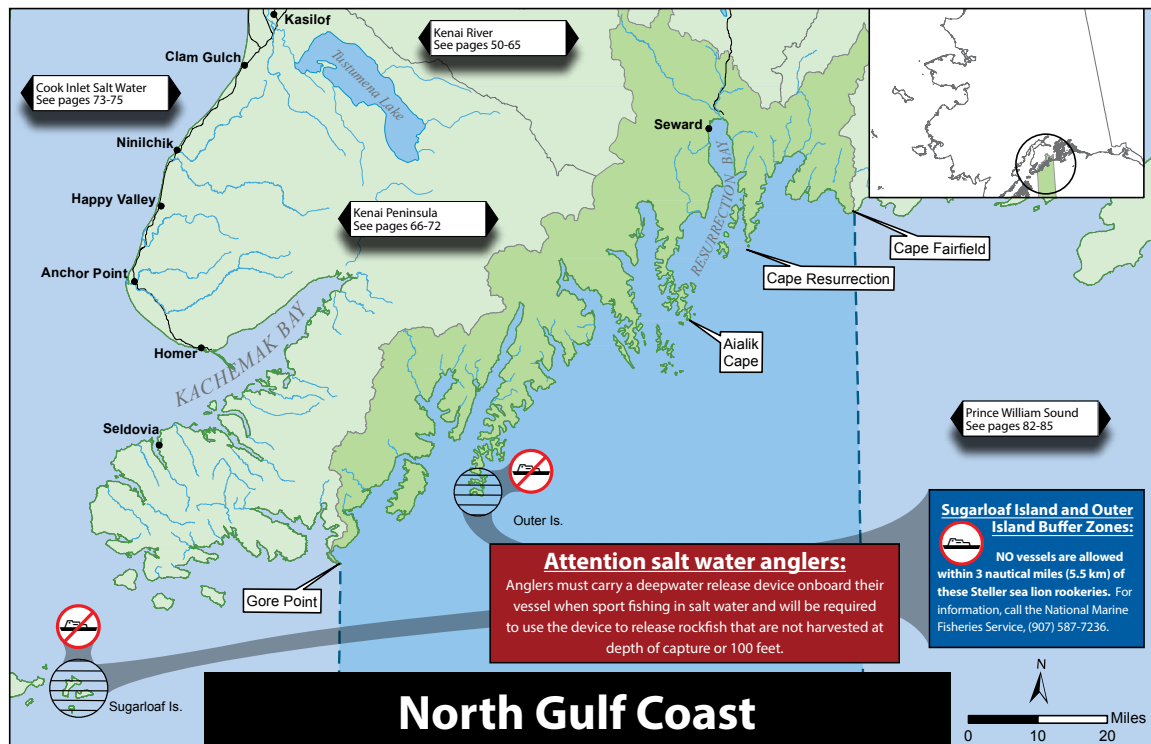
Gaffs: A gaff may not be used to puncture any fish intended or required to be released.

KING SALMON

- Fresh waters:
 - Closed to king salmon fishing.
- Salt waters (except Resurrection Bay, see Special Regulations on page 80):
 - 1 per day, 1 in possession (there is no annual limit or recording requirement).

OTHER SALMON

- Fresh waters:
 - Open to year-round to fishing for salmon (other than king salmon), except see Special Regulations on pages 78-79.
 - Salmon (other than king salmon):
 - 16 inches or greater: 3 per day, 3 in possession - only 2 of which can be coho salmon.
 - A coho salmon that is removed from the water must be retained and becomes part of the bag and possession limit of the person who originally hooked the fish.
 - You may not remove a coho salmon from the water before releasing the fish.
 - Less than 16 inches: 10 per day, 10 in possession.
- Salt waters (except Resurrection Bay, see Special Regulations on page 80):
 - Pink salmon taken in the sport fishery may be used as bait, but are part of your bag limit. Pink salmon used as bait must not be alive.
 - 6 per day, 6 in possession, only 3 per day, 3 in possession may be coho (silver) salmon.



North Gulf Coast

RAINBOW/STEELHEAD TROUT

- Fresh waters:
 - There is a total annual limit of 2 rainbow/steelhead trout 20 inches or longer.
 - If you retain a rainbow/steelhead trout 20 inches or longer, you must immediately record that harvest. See page 5 for recording instructions.
- In flowing waters:
 - 2 per day, 2 in possession, only 1 fish may be 20 inches or longer.
- In lakes and ponds:
 - 5 per day, 5 in possession, only 1 fish may be 20 inches or longer.
- **In all North Gulf Coast salt waters:**
 - No open season. No retention. All rainbow/steelhead trout caught may not be removed from the water and must be released immediately.

ARCTIC CHAR/DOLLY VARDEN

- Fresh waters:
 - In flowing waters:
 - 2 per day, 2 in possession.
 - In lakes and ponds:
 - 5 per day, 5 in possession.
- Salt waters (Dolly Varden only):
 - 5 per day, 5 in possession.

LAKE TROUT

- 20 inches or longer: 2 per day, 2 in possession.
- Less than 20 inches: 10 per day, 10 in possession.

ARCTIC GRAYLING

- 5 per day, 5 in possession.

...continued

General Regulations - North Gulf Coast (cont.)

LINGCOD

- **July 1–December 31:** 1 per day, 1 in possession, must be at least 35 inches long with head attached or 28 inches from tip of tail to front of dorsal fin with head removed.
- Resurrection Bay **closed to lingcod fishing.** See Special Regulations on page 80.

ROCKFISH

- 4 per day, 8 in possession, only 1 per day, 2 in possession may be nonpelagic. See chart on page 92.

HALIBUT

Pacific halibut fisheries are managed by the federal government under international treaty. See page 7 for federal contact information.

- **Season:** February 1–December 31.
- **Unguided anglers:** 2 per day, 4 in possession.
- Consult federal regulations for bag, possession and size limits and other regulations for guided (charter) anglers
- **Filleting requirements for fish cleaned at sea:** No person shall possess on board a vessel, including charter vessels and pleasure craft used for fishing, Pacific halibut that have been filleted, mutilated, or otherwise disfigured in any manner, except that each Pacific halibut may be cut into no more than 2 ventral pieces, 2 dorsal pieces, and 2 cheek pieces, with a patch of skin on each piece, naturally attached.

SHARKS (EXCEPT SPINY DOGFISH)

- 1 per day, 1 in possession.
- There is an annual limit of 2 sharks. These harvested fish must be recorded. See page 5 for recording instructions.

SPINY DOGFISH

- 5 per day, 5 in possession.

OTHER FINFISH

- No limit.

SHELLFISH

- See page 81.

Fresh Water Methods and Means - North Gulf Coast

Bait and tackle restrictions in flowing waters:

- **September 1–December 31:** Only unbaited, artificial lures or flies are allowed.

Fresh Water Special Regulations - North Gulf Coast

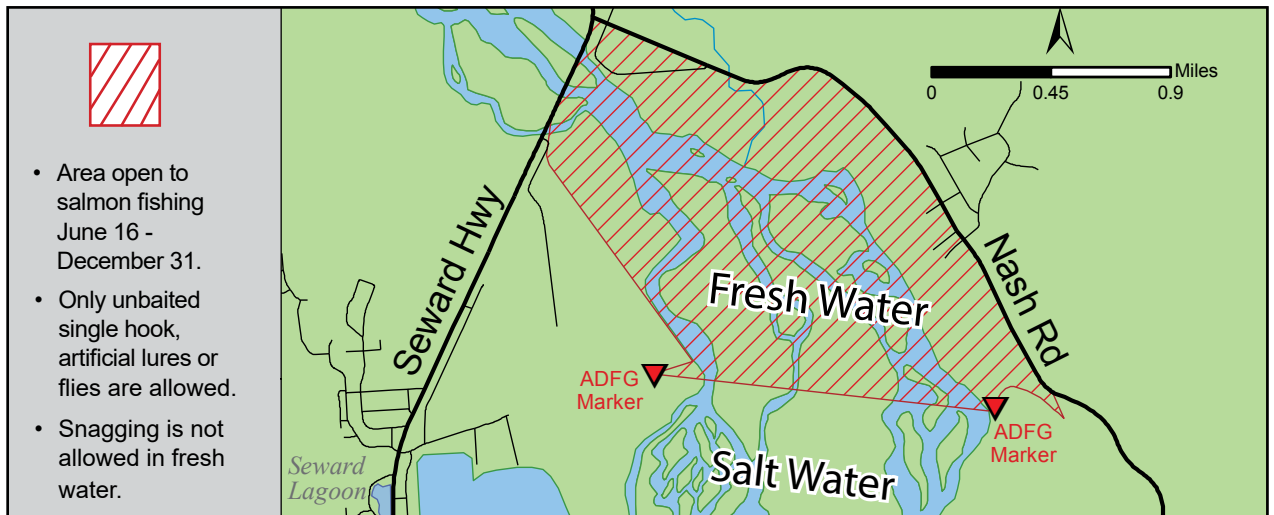
If an individual water body or species is not listed below, then the General Regulations shown on page 77 apply.

First Lake Youth-Only Fishery: 

- Only open to anglers 15 years of age or younger.
- Four consecutive days beginning the third Thursday in May (May 20–23, 2021).

Resurrection Bay fresh waters—(All flowing waters and all lakes and ponds north of a line between Cape Resurrection and Aialik Cape, and south of Mile 12, Seward Highway):


- Open year-round to fishing for species other than salmon.
- Closed year-round to salmon fishing (except see below).
- **Resurrection River, downstream of the Seward Highway and Nash Road to ADF&G markers:**
 - Only unbaited, single hook, artificial lures or flies are allowed.
 - Salmon (except king salmon):
 - **June 16–December 31:** Open to fishing for salmon (except king salmon).
 - 3 per day, 3 in possession, of which only 2 may be coho salmon.



Seward Lagoon and Outfall Stream Youth-Only Fishery:

- Only open to anglers 15 years of age or younger.
 - Only one hook (single or treble) per line may be used; artificial lures or flies and bait are legal.
 - You may not attempt to snag fish or retain a fish not hooked inside the mouth.
 - King salmon:
 - **June 17–June 30:** Open to fishing for king salmon. Only open to anglers 15 years of age or younger.
 - 2 per day, 2 in possession (no size limit). Once you have retained a bag limit of king salmon, you may not fish for any species in the Seward Lagoon or the Lagoon Outfall stream on that same day.
- Coho salmon:
 - **August 25–September 7:** Open to fishing for coho (silver) salmon. Only open to anglers 15 years of age or younger.
 - 2 per day, 2 in possession. Once you have retained a bag limit of coho salmon, you may not fish for any species in the Seward Lagoon or the Lagoon Outfall stream on that same day.
- **Closed to fishing for other species during these Youth-Only fisheries.**
- **Closed to all fishing the remainder of the year.**

Youth-Only Fisheries - Seward Lagoon and First Lake

 Areas outlined in red indicate Youth-Only Fisheries.

See regulations for Seward Lagoon and Outfall Stream (also known as Scheffler Creek) Youth-Only Fishery above.

See regulations on page 78 for First Lake Youth-Only Fishery.



Salt Water Special Regulations - Resurrection Bay

If an individual water body or species is not listed below, then the General Regulations shown on pages 77-78 apply.

Resurrection Bay— North of a line from Aialik Cape to Cape Resurrection:

- You may possess only the limit of fish allowed for the water on which you are fishing. For example, possession of more than 3 coho salmon outside Resurrection Bay (south of a line from Aialik Cape to Cape Resurrection) exceeds the North Gulf Coast salt waters possession limit for this species. It is illegal to fish for any species in these waters with more than 3 coho salmon in your possession.
- King salmon:
 - May 1–August 31:** 2 per day, 2 in possession.
 - September 1–April 30:** 1 per day, 1 in possession.
 - There is no annual or seasonal king salmon limit in effect, and there is no king salmon harvest recording requirement for the entire year.
- Salmon (except king salmon):
 - Open to fishing year-round.
 - 6 per day, 6 in possession. All 6 may be coho (silver) salmon.
 - Pink salmon taken in the sport fishery may be used as bait, but are part of your bag limit.
- Lingcod:
 - Closed year-round to lingcod fishing.**
 - Lingcod caught incidentally must be released immediately. You cannot legally fish for any species of fish inside Resurrection Bay if you possess a lingcod taken elsewhere.



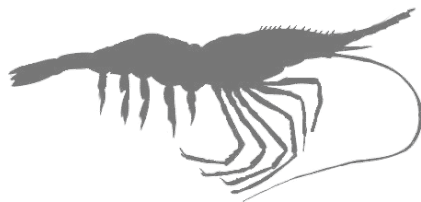
A shoreline view from Seward, Alaska.



Shrimp - North Gulf Coast

SHRIMP

- **Personal Use Shrimp-Alaska residents only**—All North Gulf Coast waters, including Resurrection Bay (see map on page 77) are open to shrimping under a Personal Use Permit:
 - **Season:** April 15 - September 15.
 - **Permit:** A North Gulf Coast Personal Use shrimp permit is required and only allowed for Alaska residents. Permits are available at ADF&G offices in Anchorage, Soldotna, and Homer and at The Fish House in Seward.
 - **Open Waters:** All North Gulf Coast waters, including Resurrection Bay. See map on page 77.
 - **Gear:** Pots only. See page 86 for shrimp pot requirements.
 - 5 pots per person, maximum of 5 pots per vessel.
 - Check Emergency Orders prior to fishing as number of pots allowed could change.
 - Net mesh or rigid mesh pots are allowed.
 - **Bag and Possession limits:** None.
 - **Harvest Reporting Requirement:**
 - Your permit must be in your possession while shrimping.
 - Final season harvest report due by September 30—even if you did not go shrimping.
 - Refer to the permit for recording requirements.



Tanner Crab - North Gulf Coast

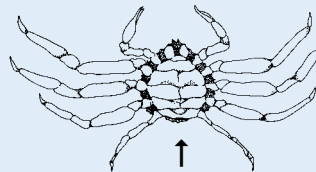
TANNER CRAB See page 86 for gear requirements.
Check for emergency orders for additional regulations.

Harvest must be reported online at:
<https://www.adfg.alaska.gov/Harvest>

- **North Gulf Coast:**
 - A permit is required and is available online at: www.adfg.alaska.gov/store.
 - **Season:** October 1 - February 28:
 - Male crabs only, 4½ inch minimum: 3 per day, 3 in possession.
 - May operate 1 pot per vessel.

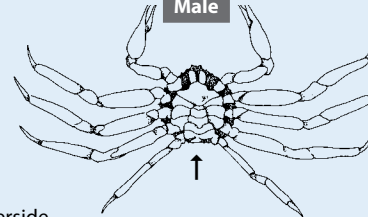
There is an annual limit of 20 crabs per person.

Female - **NO HARVEST ALLOWED**

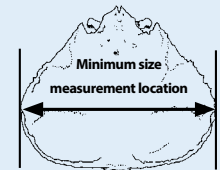


Wide abdominal flap covers most of underside (females are usually smaller than legal size)

Male



Narrow abdominal flap



Width measurement of Tanner crab is the straight-line distance across the carapace, **including** spines.

DUNGENESS CRAB

- **Season:** **Closed.**

KING CRAB

- **Season:** **Closed.**

RAZOR CLAMS

- There are no bag or possession limits.

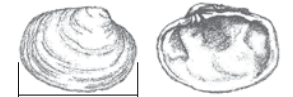
LITTLENECK AND BUTTER CLAMS

- 80 per day, 80 in possession in combination.
 - Littleneck clams: Must be 1½ inches or wider.
 - Butter clams: Must be 2½ inches or wider.

OTHER SHELLFISH

- No limit.

BUTTER CLAM



Minimum 2½ inches across the widest part of the shell for Cook Inlet and North Gulf Coast harvest requirement.

The butter clam shell is thick and white. It has heavy concentric growth rings, but no vertical ridges. The shell's inner edge is smooth. Butter clams are 3 to 5 inches long.

PACIFIC LITTLENECK CLAM



Minimum 1½ inches across the widest part of the shell for Cook Inlet and North Gulf Coast harvest requirement.

Littleneck clam shells have concentric growth rings and distinct vertical ridges. The inner edge is ridged like the edge of a quarter. Littleneck clams are about 2 inches long.