

See the **Northern** Alaska Sport Fish Regulation Summary

Susitna River Drainage  
See pages 19-35

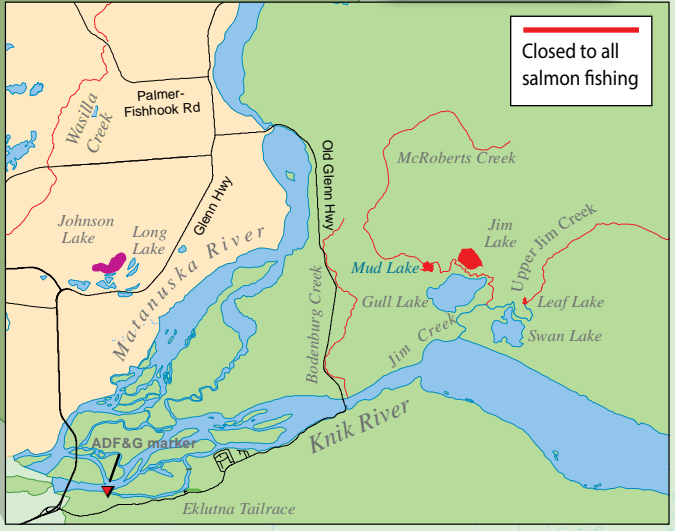
Remainder of Knik Arm Freshwaters

Prince William Sound  
See pages 77-80

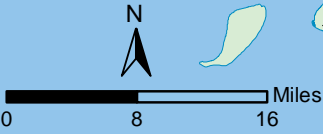
**Palmer Wasilla Zone**  
Open season in flowing waters is June 15 - April 14

- Closed to Salmon Fishing
- Closed to All Fishing
- Catch and Release for Rainbow Trout
- Open To King Salmon Fishing

Anchorage Bowl  
See pages 42-47



Closed to all salmon fishing



## GENERAL REGULATIONS

**Inclusive waters:** Bounded on the north by (but not including) Willow Creek, on the west by a line ½ mile east of the Susitna River, on the south by Cook Inlet and Knik Arm, and on the east by the Upper Susitna River drainage upstream of its confluence with the Oshetna River and includes all waters within the Matanuska and Knik River drainages.

**The Fishing Season for all species is open year-round unless otherwise noted below.**

### KING SALMON

- The fresh waters of the Knik Arm are **closed to king salmon fishing**, except the Little Susitna drainage and Eklutna Tailrace. See special regulations.
- In stocked lakes (see pages 84-85 for a list of stocked lakes): 10 per day, 10 in possession, in combination with other salmon.
- In Knik Arm waters open to king salmon fishing:
  - There is a combined annual limit of 5 king salmon 20 inches or longer from the waters of the following areas: Cook Inlet Salt Waters, West Cook Inlet, Susitna River Drainage, Knik Arm, Anchorage Bowl, and Kenai Peninsula.
  - A king salmon 20 inches or longer that is removed from salt or fresh water must be retained and becomes part of the bag limit of the person who originally hooked the fish. A person may not remove a king salmon 20 inches or longer from the water before releasing it.
  - Anglers who keep a king salmon 20 inches or longer must immediately record that harvest. See page 5 for recording instructions.



### OTHER SALMON

- In stocked lakes (see pages 84–85 for a list of stocked lakes):
  - 10 per day, 10 in possession in combination with king salmon.
- In other lakes and ponds and in all flowing waters:
  - 16 inches or longer:
    - 3 per day/3 in possession, only 2 per day/2 in possession may be coho (silver) salmon.
  - Less than 16 inches:
    - 10 per day, 10 in possession in combination.
- A coho salmon 16 inches or longer that is removed from fresh water must be retained and becomes part of the bag limit of the person who originally hooked the fish. A person may not remove a coho salmon 16 inches or longer from the water before releasing it.

### RAINBOW/STEELHEAD TROUT

- In stocked lakes (see pages 84–85 for a list of stocked lakes):
  - 5 per day, 5 in possession, only 1 fish may be 20 inches or longer.
  - 20 inches or longer:
    - There is an annual limit of 10 rainbow/steelhead trout 20 inches or longer from stocked lakes.
- In other lakes and ponds and in all flowing waters:
  - 2 per day, 2 in possession, only 1 fish may be 20 inches or longer.
  - 20 inches or longer:
    - There is a total annual limit of 2 rainbow/steelhead trout 20 inches or longer taken north of the latitude of Point Adam, from the waters of the following areas: West Cook Inlet, Susitna River Drainage, Knik Arm, Anchorage Bowl, Kenai Lake drainages, Kenai River tributaries, and Kenai Peninsula.
- Anglers who keep a rainbow/steelhead trout 20 inches or longer must immediately record that harvest. See page 5 for recording instructions.

### ARCTIC CHAR/DOLLY VARDEN

- In stocked lakes (see pages 84-85 for a list of stocked lakes):
  - 5 per day, 5 in possession.
- In other lakes and ponds and in all flowing waters:
  - 5 per day, 5 in possession, only 1 fish may be 12 inches or longer.

### ARCTIC GRAYLING

- In stocked lakes (see pages 84-85 for a list of stocked lakes):
  - 5 per day, 5 in possession.
- In other lakes and ponds and in all flowing waters:
  - 2 per day, 2 in possession.

### LAKE TROUT

- 2 per day, 2 in possession.

### BURBOT

- 5 per day, 5 in possession.
- Burbot lines must be closely attended.

### NORTHERN PIKE

- No limit.
- Northern pike may be taken by spear, sport fishing gear, ice fishing gear, or by bow and arrow (the arrow must be attached to the bow with a line and the arrow must have a barbed tip).
- When fishing through the ice for northern pike, anglers may use two hooks on a single line, provided that both hooks are attached to one single piece of bait.

### OTHER FINFISH

- No limit.

## METHODS AND MEANS

### **The use of bait:**

- Bait is allowed unless prohibited in the special regulations that follow.

**SPECIAL REGULATIONS**

**Anderson Lake:**

- Northern pike: Sport fishing through the ice for northern pike is allowed using 5 lines, provided standard ice-fishing gear is used, the fishing gear is closely attended, and all other fish caught are released immediately. Anglers may use 2 hooks on a single line, provided that both hooks are attached to one single piece of bait.

**Big Lake** (see Fish Creek drainage).

**Bonnie Lakes connecting stream**—from the outlet at Upper Bonnie lake to the inlet of Lower Bonnie Lake:

- Open season is July 1–April 14.

**Bodenburg Creek**—including all waters of Knik River within a 100-yd radius of the mouth of the creek (see map on page 40):

- **Closed year-round to fishing for salmon.**
- No retention of rainbow/steelhead trout allowed April 15–June 14.

**Cottonwood Creek drainage:**

- A person who takes a bag limit of salmon from Cottonwood Creek may not fish for any species of fish in waters open to salmon fishing on that same day.
- All lakes of the Cottonwood Creek drainage, including Wasilla Lake, are **closed year-round to fishing for salmon.**
- **From its mouth upstream to ADF&G markers 1 mile upstream from the Palmer Hayflats State Game Refuge access road:**
  - Open season for all species except king salmon is June 15–April 14, but fishing is allowed only on Saturdays and Sundays and only between the hours of 5:00 a.m. and 10:00 p.m.
- **All flowing waters of Cottonwood Creek above the ADF&G markers 1 mile upstream from Palmer Hayflats State Game Refuge access road:**
  - **Closed year-round to fishing for salmon.** Open season for other species is June 15–April 14.



Silver salmon from Eklutna Tailrace

**Eklutna Tailrace:**

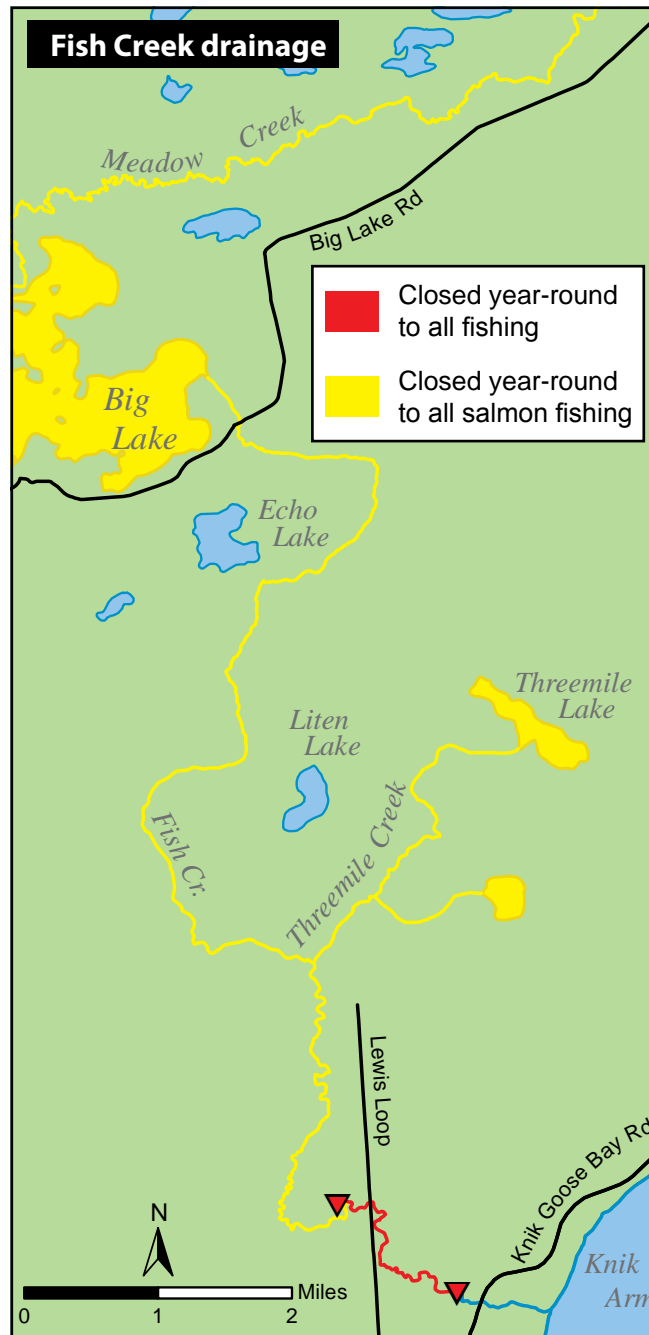
- Salmon (except king salmon):
  - 16 inches or longer limits:
    - 3 per day, 3 in possession, all 3 may be coho (silver) salmon.
  - Less than 16 inches:
    - 10 per day, 10 in possession in combination.
- **All waters within a ½-mile radius of its confluence with the Knik River, and to an ADF&G marker located 2 miles downstream of the confluence:**
  - King salmon limits:
    - Open to fishing for king salmon from January 1–December 31.
    - Once you have retained a king salmon 20 inches or longer, you may no longer fish in any waters open to king salmon fishing on that same day.
    - The daily limit for king salmon 20 inches or longer is 1 per day, 1 in possession; less than 20 inches is 10 per day, 10 in possession.
- **Eklutna Tailrace Youth-Only King and Coho Fisheries:**
  - Youth Fishery Zones established for persons 15 years of age or younger:
    - The third Saturday in June from 6:00 a.m. to 6:00 p.m. (June 17, 2017), and the third Saturday in August from 6:00 a.m. to 6:00 p.m. (August 19, 2017).

**Figure Eight Lake:**

- Northern pike: Sport fishing through the ice for northern pike is allowed using 5 lines, provided standard ice-fishing gear is used, the fishing gear is closely attended, and all other fish caught are released immediately. Anglers may use 2 hooks on a single line, provided that both hooks are attached to one single piece of bait.

### Fish Creek drainage—including Big Lake:

- A person who takes a bag limit of salmon from Fish Creek may not fish for any species of fish in waters open to salmon fishing on that same day.
- **From ADF&G markers at the mouth of Fish Creek upstream to ADF&G markers ¼ mile upstream from the Knik-Goose Bay Rd.:**
  - Open season for all species except king salmon is August 13–December 31.
  - Fishing is allowed only on Saturdays and Sundays and only between the hours of 5:00 a.m. and 10:00 p.m.
  - Youth-Only Fishery:
    - Anglers 15 years of age and younger may fish for all species, except king salmon.
    - Fishing is allowed only between 5:00 a.m.–10:00 p.m. daily on the first Saturday and Sunday in August each year. During 2017, this will be August 5–6. General regulations and limits apply.
- **From the ADF&G markers ¼ mile upstream from the Knik-Goose Bay Rd., upstream to ADF&G markers located ¼ mile upstream of the Lewis Rd. bridge:**
  - **Closed year-round to all fishing.**
- **Flowing waters from the ADF&G markers ¼ mile upstream of the Lewis Rd. bridge, including Meadow Creek:**
  - **Closed year-round to salmon fishing.**
  - Open season for other species is June 15–April 14.
- **Fish Creek drainage lakes:**
  - **Closed year-round to salmon fishing.**



### Fish Creek drainage (continued):

#### • **Big Lake:**

- **Closed year-round to salmon fishing.**
- Only one unbaited, single-hook, artificial lure is allowed November 1–April 30, including fishing for burbot.
- When fishing through the ice, anglers may use two lines, but each line may have only one single hook.
- Arctic char/Dolly Varden daily limits: 1 per day, 1 in possession, must be 20 inches or longer.
- Burbot limits:
  - **Closed to the retention of burbot, March 15–April 30.**
  - 2 per day, 2 in possession, May 1–March 14.
- Northern pike:
  - Anglers may fish for northern pike through the ice in Big Lake using 5 lines from November 1–March 15, between 8 a.m.–5 p.m.:
    - Hook gap must be at least 3/4 inch from point to shank.
    - Two single hooks are allowed per line as long as both hooks are attached to the same piece of bait.
    - A whole legally recognized bait fish such as herring or smelt must be used if fishing with bait.
    - Bait must be suspended above the bottom of the lake.
    - Fishing lines must be closely attended.
    - All other species of fish must be immediately released unharmed.

#### **Flathorn Lake:**

- Northern pike: Sport fishing through the ice for northern pike is allowed using 5 lines, provided standard ice-fishing gear is used, the fishing gear is closely attended, and all other fish caught are released immediately. Anglers may use 2 hooks on a single line, provided that both hooks are attached to one single piece of bait.

...continued



**SPECIAL REGULATIONS (continued)**

**Jim Creek drainage**— including all waters downstream to the Knik River and continuing downstream on the Knik River to within 100 yards of its confluence with Bodenburg Creek:

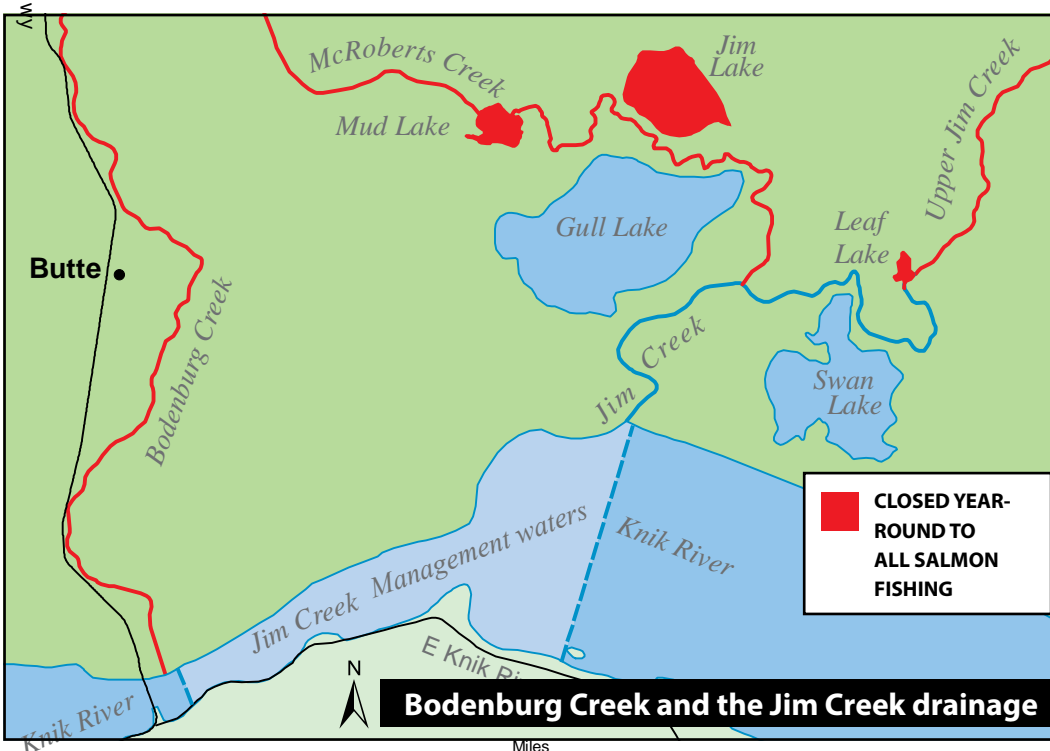
- Daily limits are the same as shown under general seasons and limits on page 37, **except that from August 1 - December 31, sport fishing for any species is closed on Mondays and Tuesdays, and fishing is allowed only between the hours of 5:00 a.m. and 10:00 p.m. Wednesdays through Fridays.**

**Jim Creek drainage (continued):**

- A person who takes a bag limit of salmon from Jim Creek may not fish for any species of fish in waters open to salmon fishing on that same day.
- **Upper Jim Creek (upstream of Leaf Lake), Jim Lake, Leaf Lake, Mud Lake, and McRoberts Creek:**
  - **Closed year-round to all salmon fishing.**

**Johnson Lake (near Palmer):**

- **Closed year-round to all fishing.**



**The Little Susitna River drainage:**

- A person may not sport fish from a boat that is powered by the use of a motor, unless the motor is a four-stroke motor or a direct fuel injection two-stroke motor. Anglers may use a boat powered by a non-direct fuel injected two-stroke to access areas to sport fish from the bank of the river, but may not sport fish from the boat.
- A person who takes a bag limit of other salmon 16 inches or longer from the Little Susitna River may not fish for any species of fish in the Little Susitna River downstream of the Parks Hwy that same day.
- In waters open to king salmon fishing, no fishing is allowed between 11:00 p.m. and 6:00 a.m. May 15–July 13.
- A coho salmon removed from the water shall be retained. No person may remove from the water a coho salmon he/she intends to release.
- King salmon limits:
  - After taking a king salmon 20 inches or longer, a person may not fish on that same day anywhere in waters open to king salmon fishing.
- **Little Susitna River flowing waters, from its mouth upstream to the Parks Highway:**
  - Open season for all species (except king salmon) is year-round.
  - Only unbaited, artificial lures are allowed October 1–August 5. Bait is allowed August 6–September 30.
  - King salmon limits:
    - Open season for king salmon is January 1–July 13.
    - The daily limit for king salmon 20 inches or longer is 1 per day, 1 in possession; less than 20 inches is 10 per day, 10 in possession.
  - Rainbow/steelhead trout limits: No retention April 15 - June 14. All rainbow/steelhead trout caught must be released immediately.
- **Nancy Lake Creek drainage, upstream of an ADF&G marker about ¼ mile upstream of its confluence with the Little Susitna River:**
  - **Closed to all salmon fishing, including catch-and-release.**
- **Little Susitna River flowing waters upstream of the Parks Highway:**
  - **Closed year-round to all salmon fishing.**
  - Open season for other species is June 15–April 14.
  - Only one unbaited, single-hook, artificial lure is allowed.

### Long Lake (Kepler-Bradley Complex):

- Open season is May 1–October 31.
- Only one unbaited, single-hook, artificial lure is allowed.
- Rainbow trout limits: No retention. All rainbow trout caught must be released immediately.

### Memory Lake:

- Northern pike limits: Sport fishing through the ice for northern pike is allowed using 5 lines, provided standard ice-fishing gear is used, the fishing gear is closely attended, and all other fish caught are released immediately. Anglers may use 2 hooks on a single line, provided that both hooks are attached to one single piece of bait.

### Nancy Lake Recreation Area Lakes:

#### • Nancy Lake:

##### • **Closed year-round to burbot fishing.**

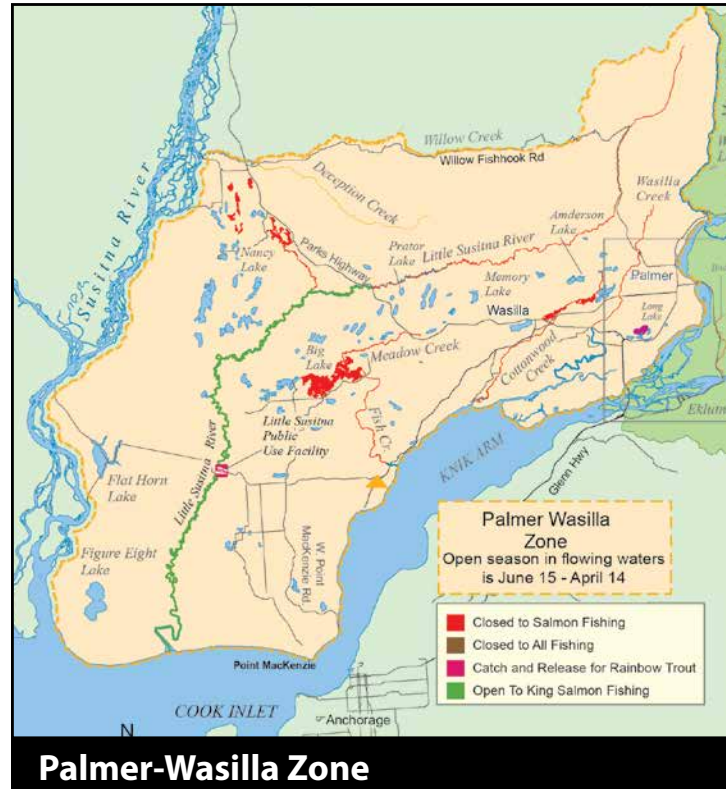
- Northern pike limits: Anglers may fish for northern pike through the ice using 5 lines from November 1–March 15, between 8 a.m.–5 p.m.; hook gap must be at least 3/4 inch from point to shank; two single hooks are allowed per line as long as both hooks are attached to the same piece of bait; a whole legally recognized bait fish such as herring or smelt must be used if fishing with bait; bait must be suspended above the bottom of the lake; lines must be closely attended; and all other species of fish must be immediately released unharmed.

#### • Nancy Lake Recreation Area Lakes (except Nancy Lake):

- Northern pike limits: Sport fishing through the ice for northern pike is allowed using 5 lines provided standard ice-fishing gear is used, the fishing gear is closely attended, and all other species of fish caught are released immediately. Anglers may use 2 hooks on a single line, provided both hooks are attached to one single piece of bait.

**Palmer-Wasilla Zone flowing waters:** The Palmer-Wasilla Zone consists of all flowing waters inside a zone bounded on the north by Willow Creek, on the west by a line ½ mile east of the Susitna River, on the south by Cook Inlet and Knik Arm, and on the east by the Matanuska River and Moose Creek (but excluding Willow Creek, the Matanuska River, and Moose Creek): The Little Susitna River is excluded from the Palmer-Wasilla Zone. See regulations for the Little Susitna River on page 40.

- Open season in the Palmer-Wasilla Zone is June 15–April 14 (but see the Little Susitna River exception above).
- Daily limits are the same as listed on page 43 under general regulations.



### Prator Lake:

- Northern pike: Sport fishing through the ice for northern pike is allowed using 5 lines, provided standard ice-fishing gear is used, the fishing gear is closely attended, and all other fish caught are released immediately. Anglers may use 2 hooks on a single line, provided that both hooks are attached to one single piece of bait.

### Wasilla Creek drainage—including Rabbit Slough:

- A person who takes a bag limit of salmon from the Wasilla Creek drainage (including Rabbit Slough) may not fish for any species of fish in waters open to salmon fishing on that same day.
- Motorized watercraft having a total propshaft rating greater than 3 HP may not be used on Wasilla Creek on Saturdays and Sundays, July 15–August 15.
- **From its mouth upstream to the Alaska Railroad bridge, including lakes and ponds:**
  - Open season for all species except king salmon is June 15–April 14, but fishing is allowed only on Saturdays and Sundays and only between the hours of 5:00 a.m. and 10:00 p.m.
- **Upstream of the Alaska Railroad bridge:**
  - **Closed to all salmon fishing.**

### Wishbone Lake (near Sutton):

- Open season is May 1–October 31.
- Only one unbaited, single-hook, artificial lure is allowed.
- Rainbow trout limits: No retention. All rainbow trout caught must be released immediately.

### Wolverine Lake drainage (near Palmer)— from its confluence with Wolverine Creek upstream to and including Wolverine Lake:

- Open season is June 15–April 14.