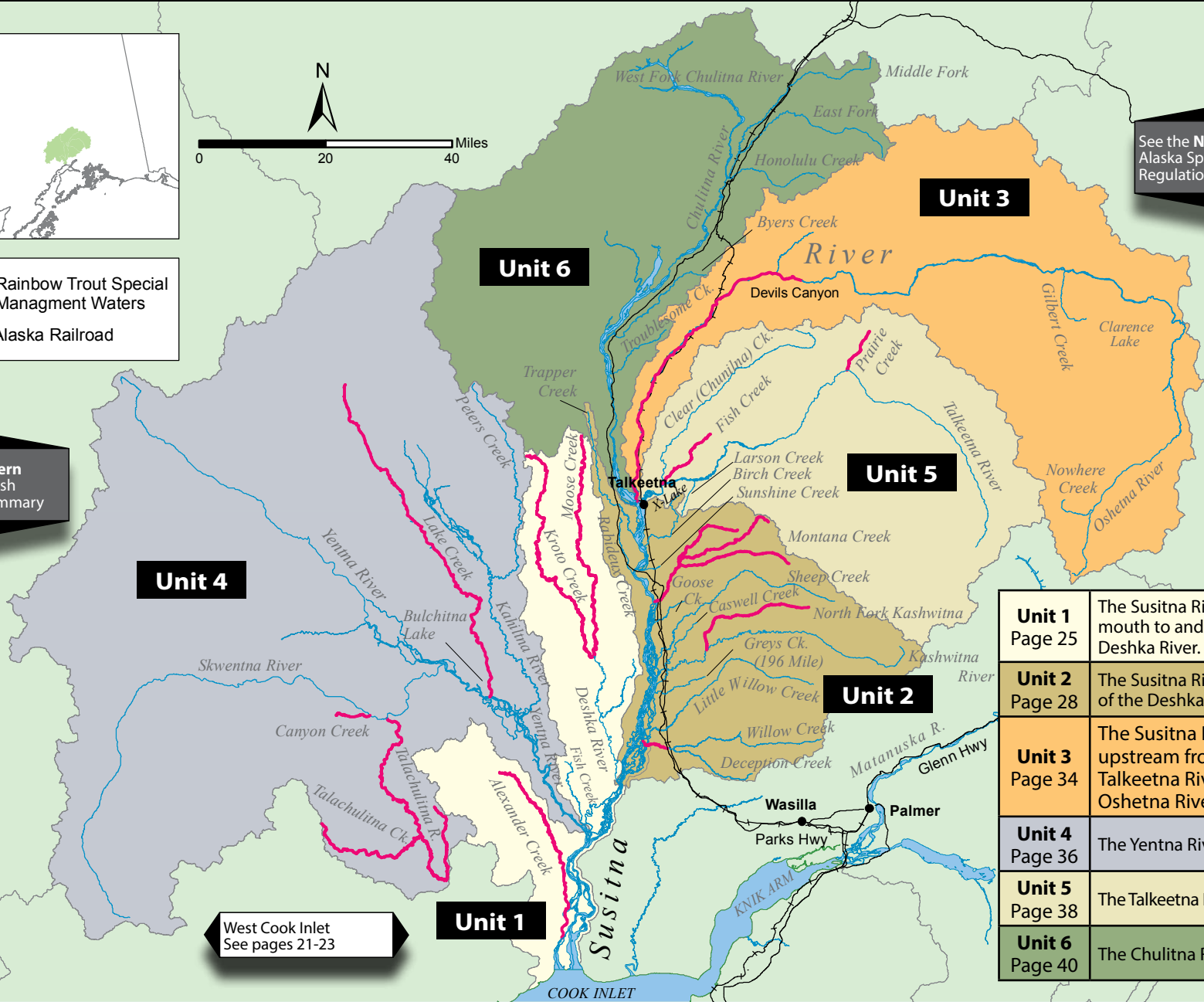


— Rainbow Trout Special Management Waters
 Alaska Railroad

See the **Northern** Alaska Sport Fish Regulation Summary

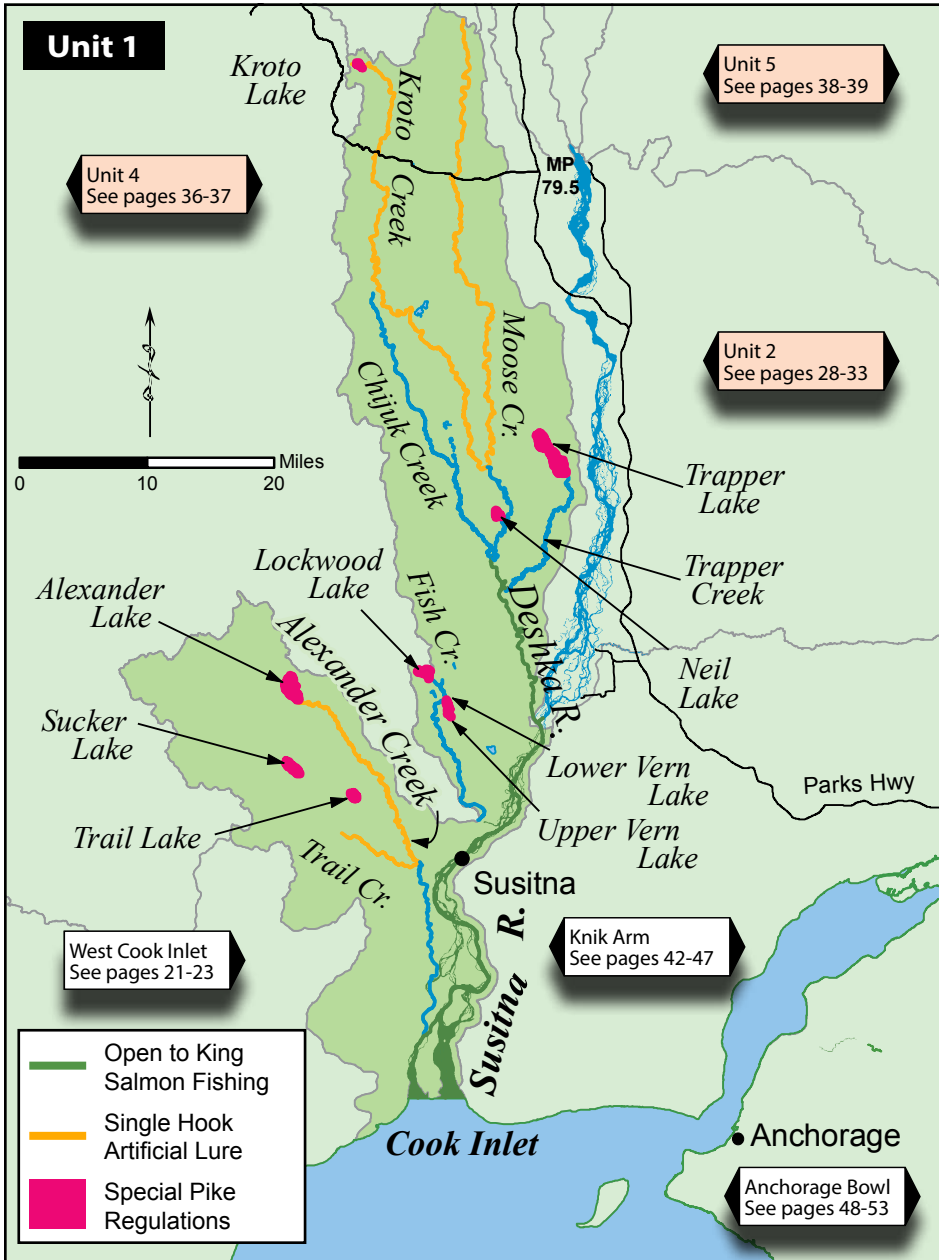
See the **Northern** Alaska Sport Fish Regulation Summary



West Cook Inlet
See pages 21-23

Unit 1 Page 25	The Susitna River from its mouth to and including the Deshka River.
Unit 2 Page 28	The Susitna River upstream of the Deshka River.
Unit 3 Page 34	The Susitna River upstream from the Talkeetna River to the Oshetna River.
Unit 4 Page 36	The Yentna River drainage.
Unit 5 Page 38	The Talkeetna River drainage.
Unit 6 Page 40	The Chulitna River drainage.

SUSITNA RIVER DRAINAGE - Unit 1



GENERAL REGULATIONS

Inclusive waters: From the mouth of the Susitna River upstream to its confluence with the Deshka River (including the Deshka River drainage, but excluding the Yentna River drainage)—the waters of the Susitna River and its westside tributaries, and all eastside waters within ½ mile of the Susitna River

The Fishing Season for all species is open year-round unless otherwise noted below.

KING SALMON

- In all flowing waters, lakes, and ponds draining into the **west** side of the Susitna, and in all waters draining into the **east** side of the Susitna **within** ½ mile of the Susitna River:
 - **Season:** January 1–July 13:
 - In waters open to king salmon fishing, including the Deshka River, fishing is not allowed between 11:00 p.m. and 6:00 a.m. May 15–July 13.
 - 20 inches or longer: 1 per day, 2 in possession.
 - There is a combined annual limit of 5 king salmon 20 inches or longer from the waters of the following areas: Cook Inlet Salt Waters, West Cook Inlet, Susitna River Drainage, Knik Arm, Anchorage Bowl, Kenai River and Kenai Peninsula.
 - A king salmon 20 inches or longer that is removed from the water must be retained and becomes part of the bag limit of the person who originally hooked the fish. A person may not remove a king salmon 20 inches or longer from the water before releasing it.
 - Anglers who keep a king salmon 20 inches or longer must immediately record that harvest. See page 5 for recording instructions.
 - Less than 20 inches: 10 per day, 10 in possession.
 - In all waters draining into the east side of the Susitna more than ½ mile from the Susitna River:
 - **Closed to fishing for king salmon.**

OTHER SALMON

- 16 inches or longer: 3 per day, 6 in possession.
 - A coho salmon 16 inches or longer that is removed from fresh water must be retained and becomes part of the bag limit of the person who originally hooked the fish. A person may not remove a coho salmon 16 inches or longer from the water before releasing it.
- Less than 16 inches: 10 per day, 10 in possession.

...continued

**GENERAL REGULATIONS
(continued)**

RAINBOW/STEELHEAD TROUT

- In flowing waters:
 - June 15–April 14: 2 per day, 2 in possession, only 1 of which may be 20 inches or longer.
 - April 15–June 14: No retention.
- In lakes and ponds: 2 per day, 2 in possession, only 1 of which may be 20 inches or longer.
- 20 inches or longer:
 - There is a total annual limit of 2 rainbow/steelhead trout 20 inches or longer taken north of the latitude of Point Adam, from the waters of the following areas: West Cook Inlet, Susitna River Drainage, Knik Arm, Anchorage Bowl, Kenai Lake drainages, Kenai River tributaries, and Kenai Peninsula, except in the stocked lakes of the Knik Arm and Susitna River areas, where the annual limit is ten (10) rainbow/steelhead trout 20 inches or longer (see pages 84–85 for a list of stocked lakes in these areas).
 - Anglers who keep a rainbow/steelhead trout 20 inches or longer must immediately record that harvest. See page 5 for recording instructions.

ARCTIC CHAR/DOLLY VARDEN

- 5 per day, 5 in possession—only 1 of which may be 12 inches or longer.

ARCTIC GRAYLING

- 2 per day, 2 in possession, no size limit.

LAKE TROUT

- 2 per day, 2 in possession, no size limit.

NORTHERN PIKE

- No limit.
- **Live Release Prohibited.** Anglers are not allowed to release live pike back into the water. Pike not retained for personal use may be disposed of through lawful and safe methods, including returning dead pike to the water.
- Northern pike may be taken by spear, sport fishing gear, ice fishing gear, or by bow and arrow (the arrow must be attached to the bow with a line and the arrow must have a barbed tip).
- When fishing through the ice for northern pike, anglers may use two hooks on a single line, provided that both hooks are attached to one single piece of bait.

The following special rules apply to ice-fishing for northern pike in the waters listed below:

- Sport fishing through the ice for northern pike is allowed using 5 lines provided that:
 - Standard ice fishing gear is used;
 - the fishing gear is closely attended, and;
 - all other species of fish caught are released immediately.
 - **Alexander Creek and Lake**
 - **Fish Creek (lower Susitna River)**
 - **Fish Creek (Kroto Slough)**
 - **Kroto Lakes**
 - **Lockwood Lake**
 - **Lower and Upper Vern Lakes (Ding-Dong Lakes)**
 - **Neil Lake**
 - **Sucker Lake**
 - **Trail Lake**
 - **Trapper Lake**
 - **Witsoe Creek**

BURBOT

- 5 per day, 5 in possession, no size limit.
- Bait is allowed while fishing for burbot, and burbot may be taken with more than one line and hook only if:
 - The total number of aggregate hooks/lines does not exceed the daily bag limit for burbot in the water being fished;
 - The hooks are single hooks with a gap between point and shank larger than ¾ inch;
 - Each hook is set to rest on the bottom of the lake or stream; and
 - Lines must be tended at least once each 24 hours.
 - When fishing for burbot, all other fish caught must be released immediately.

OTHER FINFISH

- No limit.

METHODS AND MEANS

Bait Restriction:

- Flowing waters of the Susitna River drainage from its mouth upstream to its confluence with the Deshka River:
 - September 1 through July 13: Only unbaited, artificial lures are allowed.
 - July 14–August 31: Bait allowed.



Float tube fishing on Alexander Lake

by Ken Marsh

SPECIAL REGULATIONS

Alexander Creek drainage—includes Alexander Lake:

- Salmon (except king salmon) limits:
 - 16 inches or longer: 3 per day, 6 in possession, only 2 per day, 4 in possession may be coho (silver) salmon.
- **In all flowing waters:**
 - Rainbow/steelhead trout, Arctic char/Dolly Varden, and Arctic grayling: No retention is allowed. Any rainbow/steelhead trout, Arctic char/Dolly Varden, or Arctic grayling caught must be released immediately.
- **Alexander Creek and all waters within a ½-mile radius of the stream's confluence with the Susitna River:**
 - King salmon:
 - **Closed year-round to fishing for king salmon.**
- **All waters within a ½-mile radius of the stream's confluence with the Susitna River:**
 - **Closed to all sport fishing from May 1–July 13.**
- **In all flowing waters upstream of ADF&G markers 400 yd upstream from its confluence with Trail Creek:**
 - Only one unbaited, single-hook, artificial lure is allowed year-round.

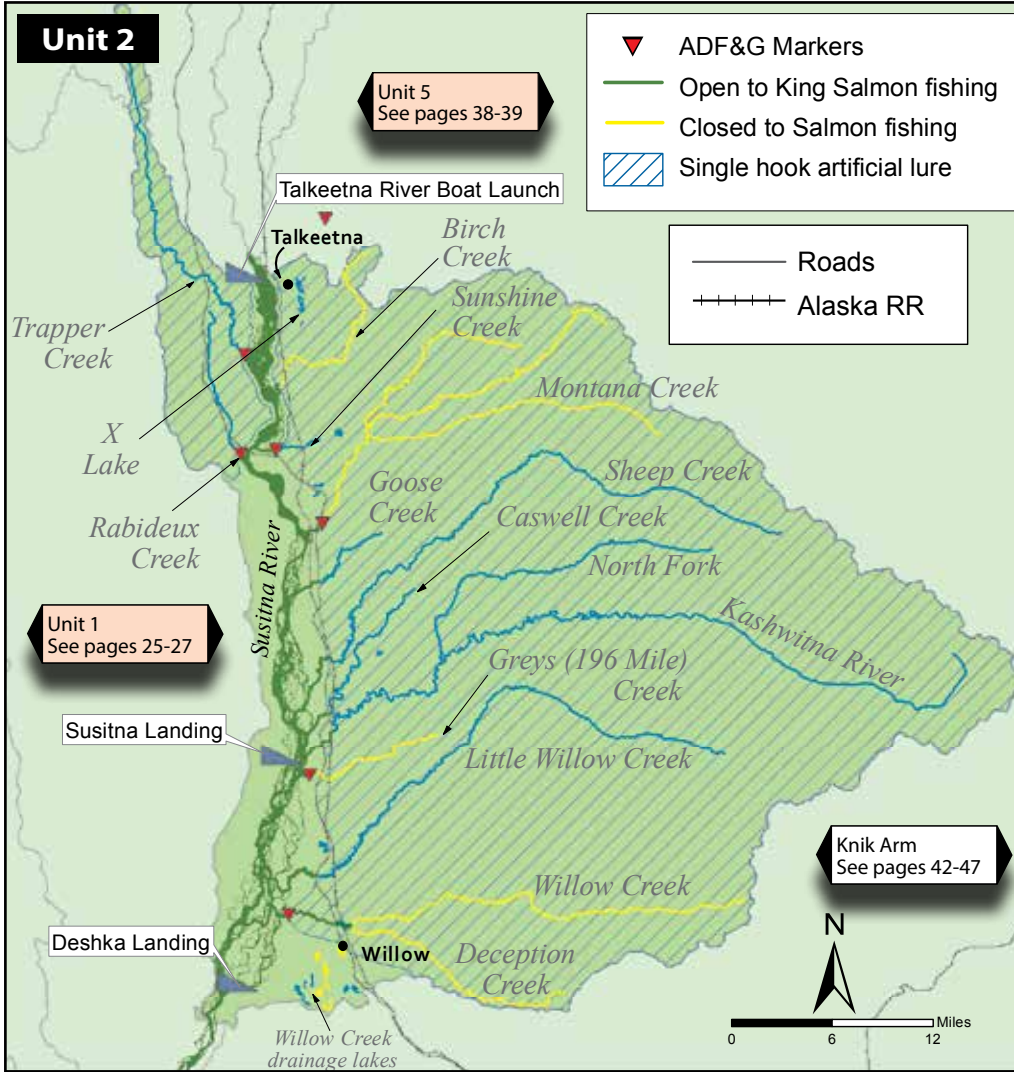


Deshka River kings

Deshka River drainage:

- King salmon limits: After taking a king salmon 20 inches or longer, a person may not fish for king salmon on that same day.
- **In flowing waters of the Deshka River drainage upstream of the forks at Moose/Kroto creeks:**
 - Only one unbaited, single-hook, artificial lure is allowed year-round.
 - Rainbow/steelhead trout: No retention of rainbow trout is allowed. All rainbow trout caught must be released immediately.
- **In flowing waters of the Deshka River drainage downstream of the forks at Moose/Kroto creeks to ADF&G markers near Chijuk Creek:**
 - Only unbaited, artificial lures are allowed September 1–July 13.
- **The Deshka River drainage, from its mouth upstream approximately 17 miles to ADF&G markers near Chijuk Creek, and all waters within a ½-mile radius of the Deshka's confluence with the Susitna River:**
 - Only unbaited, artificial lures are allowed September 1–May 31.
 - Bait is allowed June 1–August 31.
 - King salmon:
 - **Season: January 1–July 13.**





GENERAL REGULATIONS

Inclusive waters: The Susitna River drainage, from its confluence with the Deshka River, upstream to its confluence with the Talkeetna River, excluding the Talkeetna River drainage. The lower portions of most streams crossed by the Parks Highway have exceptions to the general regulations, listed on the following pages.

The Fishing Season for all species is open year-round unless otherwise noted below.

KING SALMON

- **Generally, unit 2 is closed to fishing for king salmon, but there are exceptions. See special regulations.**
- In stocked lakes (see pages 84-85 for a list of stocked lakes): 10 per day, 10 in possession, in combination with other salmon.
- In waters where king salmon fishing is allowed, the following regulations apply:
 - A king salmon 20 inches or longer that is removed from salt or fresh water must be retained and becomes part of the bag limit of the person who originally hooked the fish. A person may not remove a king salmon 20 inches or longer from the water before releasing it.
 - There is a combined annual limit of 5 king salmon 20 inches or longer from the waters of the following areas: Cook Inlet Salt Waters, West Cook Inlet, Susitna River Drainage, Knik Arm, Anchorage Bowl, Kenai River and Kenai Peninsula.
 - Anglers who keep a king salmon 20 inches or longer must immediately record that harvest. See page 5 for recording instructions.
 - After taking a king salmon 20 inches or longer, a person may not fish for any species of fish in any water open to king salmon fishing during that same day.
 - In waters open to king salmon fishing, fishing is not allowed between 11:00 p.m. and 6:00 a.m. May 15–July 13.

OTHER SALMON

- In stocked lakes (see pages 84-85 for a list of stocked lakes): 10 per day, 10 in possession, in combination with king salmon.
- In other lakes and ponds and in all flowing waters:
 - 16 inches or longer: 3 per day, 3 in possession, only 2 per day, 2 in possession may be coho salmon.
 - Less than 16 inches: 10 per day, 10 in possession, in combination.
- A coho salmon 16 inches or longer that is removed from fresh water must be retained and becomes part of the bag limit of the person who originally hooked the fish. A person may not remove a coho salmon 16 inches or longer from the water before releasing it.



Trout in net

RAINBOW/STEELHEAD TROUT

- In stocked lakes (see pages 84–85 for a list of stocked lakes): 5 per day, 5 in possession, only 1 of which may be 20 inches or longer.
- In other lakes and ponds: 2 per day, 2 in possession, only 1 of which may be 20 inches or longer.
- In flowing waters:
 - June 15–April 14: 2 per day, 2 in possession, only 1 of which may be 20 inches or longer.
 - April 15–June 14: No retention.
- 20 inches or longer:
 - There is a total annual limit of 2 rainbow/steelhead trout 20 inches or longer taken north of the latitude of Point Adam, from the waters of the following areas: West Cook Inlet, Susitna River Drainage, Knik Arm, Anchorage Bowl, Kenai Lake drainages, Kenai River tributaries, and Kenai Peninsula, except in the stocked lakes of the Knik Arm and Susitna River areas, where the annual limit is ten (10) rainbow/steelhead trout 20 inches or longer (see pages 84–85 for a list of stocked lakes in these areas).
 - Anglers who keep a rainbow/steelhead trout 20 inches or longer must immediately record that harvest. See page 5 for recording instructions.

ARCTIC CHAR/DOLLY VARDEN

- In stocked lakes (see pages 84–85 for a list of stocked lakes): 5 per day, 5 in possession.
- In other lakes and ponds and in all flowing waters: 5 per day, 5 in possession, only 1 of which may be 12 inches or longer.

ARCTIC GRAYLING

- 2 per day, 2 in possession.

LAKE TROUT

- 2 per day, 2 in possession.

BURBOT

- 5 per day, 5 in possession, no size limit.
- Bait is allowed while fishing for burbot, and burbot may be taken with more than one line and hook only if:
 - The total number of aggregate hooks/lines does not exceed the daily bag limit for burbot in the water being fished;
 - The hooks are single hooks with a gap between point and shank larger than ¾ inch;
 - Each hook is set to rest on the bottom of the lake or stream; and
 - Lines must be tended at least once each 24 hours.
- When fishing for burbot, all other fish caught must be released immediately.

NORTHERN PIKE

- No limit.
- **Live Release Prohibited.** Anglers are not allowed to release live pike back into the water. Pike not retained for personal use may be disposed of through lawful and safe methods, including returning dead pike to the water.
- Northern pike may be taken by spear, sport fishing gear, ice fishing gear, or by bow and arrow (the arrow must be attached to the bow with a line and the arrow must have a barbed tip).
- When fishing through the ice for northern pike, anglers may use two hooks on a single line, provided that both hooks are attached to one single piece of bait.

OTHER FINFISH

- No limit.

METHODS AND MEANS

Bait restrictions:

- In all flowing waters of Unit 2, only one unbaited, single-hook, artificial lure is allowed September 1–May 31, and only unbaited, artificial lures are allowed June 1–July 13. Bait allowed July 14–August 31.

SPECIAL REGULATIONS

Birch Creek:

- **From its mouth to ADF&G markers ¼ mile upstream:**

Jan. 1 - June 20	Open to all species, including king salmon.
June 21 - 24	Closed to all fishing.
June 25 - 27	Open to all species, including king salmon.
June 28 - July 1	Closed to all fishing.
July 2 - 4	Open to all species, including king salmon.
July 5 - 13	Closed to all fishing.
July 14 - Dec. 31	Open to all species, except king salmon.

- Fishing is not allowed from 11:00 p.m.–6:00 a.m., May 15–July 13.
- King salmon limits:
 - 20 inches or longer—1 per day, 1 in possession.
 - Less than 20 inches—10 per day, 10 in possession.
- **Upstream from ADF&G markers ¼ mile upstream from its mouth:**
 - **Closed year-round to all salmon fishing.**
 - Open year-round to fishing for other species.
 - Only one unbaited, single hook, artificial lure is allowed year-round.

SPECIAL REGULATIONS (continued)

Caswell, Little Willow and Sheep Creek drainages:

- From its mouth upstream to the Parks Highway bridge:

Jan. 1 - June 20	Open to all species, including king salmon.
June 21 - 24	Closed to all fishing.
June 25 - 27	Open to all species, including king salmon.
June 28 - July 1	Closed to all fishing.
July 2 - 4	Open to all species, including king salmon.
July 5 - 13	Closed to all fishing.
July 14 - Dec. 31	Open to all species, except king salmon.

- Fishing is not allowed from 11:00 p.m.–6:00 a.m., May 15–July 13.
- King salmon limits:
 - 20 inches or longer—1 per day, 1 in possession.
 - Less than 20 inches—10 per day, 10 in possession.
- **Upstream of the Parks Highway bridge:**
 - General regulations on pages 28–29 apply.
 - Only one unbaited, single hook, artificial lure is allowed year-round.

Goose Creek:

- From its mouth upstream to the Parks Highway bridge:

Jan. 1 - June 20	Open to all species, except king salmon.
June 21 - 24	Closed to all fishing.
June 25 - 27	Open to all species, except king salmon.
June 28 - July 1	Closed to all fishing.
July 2 - 4	Open to all species, except king salmon.
July 5 - 13	Closed to all fishing.
July 14 - Dec. 31	Open to all species, except king salmon.

- Fishing is not allowed from 11:00 p.m.–6:00 a.m., May 15–July 13.
- **Upstream of the Parks Highway bridge:**
 - Open to fishing for all species (except king salmon) year-round.
 - Only one, unbaited, single-hook, artificial lure is allowed.

Greys (196 Mile) Creek:

- From its mouth to ADF&G markers ¼ mile upstream:

Jan. 1 - June 20	Open to all species, including king salmon.
June 21 - 24	Closed to all fishing.
June 25 - 27	Open to all species, including king salmon.
June 28 - July 1	Closed to all fishing.
July 2 - 4	Open to all species, including king salmon.
July 5 - 13	Closed to all fishing.
July 14 - Dec. 31	Open to all species, except king salmon.

- Fishing is not allowed from 11:00 p.m.–6:00 a.m., May 15–July 13.
- King salmon limits:
 - 20 inches or longer—1 per day, 1 in possession.
 - Less than 20 inches—10 per day, 10 in possession.
- **Upstream from ADF&G markers ¼ mile upstream from its mouth:**
 - **Closed year-round to all salmon fishing.**
 - **Closed to all fishing, April 15–June 14.**
 - This section is open to fishing for all species except salmon, January 1–April 14 and June 15–December 31.
- **Upstream of the Parks Highway bridge:**
 - Only one unbaited, single hook, artificial lure is allowed year-round.



Kashwitna River drainage:

- From its mouth upstream to the Alaska railroad bridge:

Jan. 1 - June 20	Open to all species, including king salmon.
June 21 - 24	Closed to all fishing.
June 25 - 27	Open to all species, including king salmon.
June 28 - July 1	Closed to all fishing.
July 2 - 4	Open to all species, including king salmon.
July 5 - 13	Closed to all fishing.
July 14 - Dec. 31	Open to all species, except king salmon.

- Fishing is not allowed from 11:00 p.m.–6:00 a.m., May 15–July 13.
- King salmon limits:
 - 20 inches or longer—1 per day, 1 in possession.
 - Less than 20 inches—10 per day, 10 in possession.
- **Upstream of the Alaska railroad bridge:**
 - General regulations on pages 28–29 apply except—
 - **North fork of the Kashwitna River, and all waters within a ¼ mile radius of its confluence with the Kashwitna River:**
 - Only one unbaited, single hook, artificial lure is allowed year-round.
 - Rainbow/steelhead trout limits:
 - Season is open year-round but no retention is allowed. All rainbow/steelhead trout caught must be released immediately.

Little Willow Creek drainage:

- See Caswell Creek Special Regulations.

Montana Creek drainage:

- **Entire drainage including all waters within ½ mile radius of its confluence with the Susitna River:**
 - Rainbow/steelhead trout and Arctic grayling:
No retention allowed year-round. All rainbow trout and Arctic grayling caught must be released immediately.
- **From its mouth upstream to ADF&G markers ½ mile above the Parks Highway:**

Jan. 1 - June 20	Open to all species, including king salmon.
June 21 - 24	Closed to all fishing.
June 25 - 27	Open to all species, including king salmon.
June 28 - July 1	Closed to all fishing.
July 2 - 4	Open to all species, including king salmon.
July 5 - 13	Closed to all fishing.
July 14 - Dec. 31	Open to all species, except king salmon.

- Fishing is not allowed from 11:00 p.m.–6:00 a.m., May 15–July 13.
- King salmon limits:
 - 20 inches or longer—1 per day, 1 in possession.
 - Less than 20 inches—10 per day, 10 in possession.
- **Upstream of the Parks Highway:**
 - Only one unbaited, single hook, artificial lure is allowed year-round.
- **Upstream of ADF&G markers ½ mile above the parks highway:**
 - **Closed year-round to all salmon fishing.**
 - Rainbow/steelhead trout and Arctic grayling:
 - Open year-round, but no retention of these species is allowed. All rainbow trout and Arctic grayling caught must be released immediately.

Rabideux, Sunshine and Trapper Creek drainages:

- **From the mouth to ADF&G markers ¼ mile upstream (all drainages):**

Jan. 1 - June 20	Open to all species, including king salmon.
June 21 - 24	Closed to all fishing.
June 25 - 27	Open to all species, including king salmon.
June 28 - July 1	Closed to all fishing.
July 2 - 4	Open to all species, including king salmon.
July 5 - 13	Closed to all fishing.
July 14 - Dec. 31	Open to all species, except king salmon.

- Fishing is not allowed from 11:00 p.m.–6:00 a.m., May 15–July 13.
- King salmon limits:
 - 20 inches or longer—1 per day, 1 in possession.
 - Less than 20 inches—10 per day, 10 in possession.
- **Upstream from ADF&G markers ¼ mile upstream of the creek's mouth (all drainages):**
 - Open to fishing year-round following general limits on pages 28–29.
 - **Rabideux Creek:**
 - All waters upstream of the Parks Highway:
 - Only one unbaited, single hook, artificial lure is allowed year-round.
 - **Sunshine Creek:**
 - All waters upstream from ADF&G markers ¼ mile upstream from its mouth:
 - Open to fishing year-round following general limits on page 28–29.
 - Only one unbaited, single hook, artificial lure is allowed year-round.
 - **Trapper Creek:**
 - All waters upstream of the Susitna River Road:
 - Only one unbaited, single hook, artificial lure is allowed year-round.

Sheep Creek drainage:

- See Caswell Creek Special Regulations.

Sunshine Creek drainage:

- See Rabideux Creek Special Regulations.

Susitna River and all flowing waters within a ¼-mile radius of the River, from its confluence with the Deshka River upstream to its confluence with the Talkeetna River:

Jan. 1 - June 20	Open to all species, including king salmon.
June 21 - 24	Closed to all fishing.
June 25 - 27	Open to all species, including king salmon.
June 28 - July 1	Closed to all fishing.
July 2 - 4	Open to all species, including king salmon.
July 5 - 13	Closed to all fishing.
July 14 - Dec. 31	Open to all species, except king salmon.

- Fishing is not allowed from 11:00 p.m.–6:00 a.m., May 15–July 13.
- King salmon limits:
 - 20 inches or longer—1 per day, 1 in possession.
 - Less than 20 inches—10 per day, 10 in possession.

Trapper Creek drainage:

- See Rabideux Creek Special Regulations.



...continued

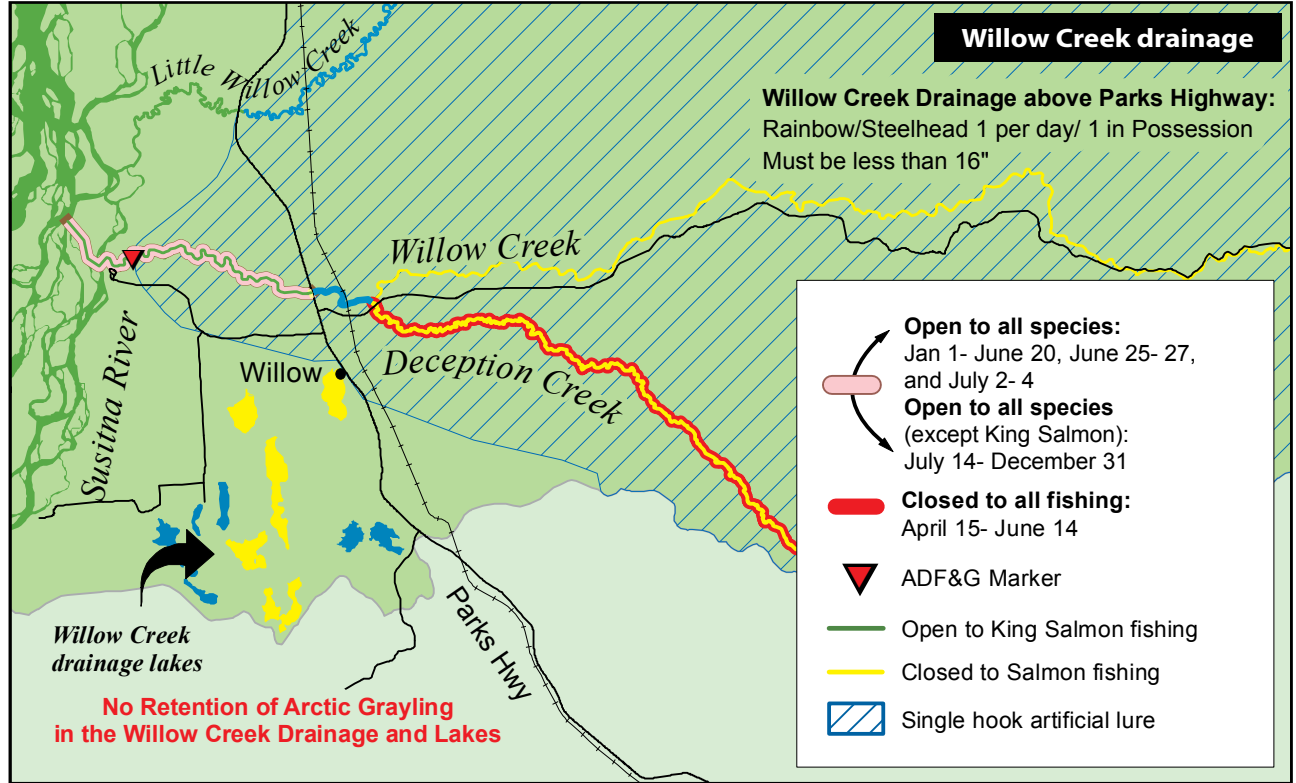
**SPECIAL REGULATIONS
(continued)**

Willow Creek drainage:

- Arctic grayling: No retention in the entire drainage, including all waters within a ½ mile radius of its confluence with the Susitna River. All Arctic grayling caught must be released immediately.
- **From its mouth upstream to the Parks Highway:**

Jan. 1 - June 20	Open to all species, including king salmon.
June 21 - 24	Closed to all fishing.
June 25 - 27	Open to all species, including king salmon.
June 28 - July 1	Closed to all fishing.
July 2 - 4	Open to all species, including king salmon.
July 5 - 13	Closed to all fishing.
July 14 - Dec. 31	Open to all species, except king salmon.

- Fishing from a boat for any species is prohibited in a portion of the Susitna River at the furthest downstream mouth of Willow Creek from May 1–July 13. The area closed to fishing from a boat is from an ADF&G marker located on the upstream bank, downstream approximately 300 yards to another ADF&G marker.
- Fishing is not allowed from 11:00 p.m.–6:00 a.m., May 15–July 13.
- King salmon limits:
 - 20 inches or longer—1 per day, 1 in possession.
 - Less than 20 inches—10 per day, 10 in possession.
- Rainbow/steelhead: No retention, including all waters within a ½ mile radius of its confluence with the Susitna River. All rainbow trout caught must be released immediately.



No Retention of Arctic Grayling in the Willow Creek Drainage and Lakes

- **Upstream from ADF&G markers ½ mile upstream from its mouth:**
 - Only one unbaited, single hook, artificial lure is allowed year-round.
- **Upstream of the Parks Highway:**
 - **Closed to king salmon fishing.**
 - Only one unbaited, single hook, artificial lure is allowed year-round.
 - Rainbow/steelhead trout limits:
 - April 15–June 14: No retention.
 - June 15–April 14: 1 per day, 1 in possession, less than 16 inches long.

- **Upstream of the Parks Highway to its confluence with Deception Creek:**
 - Open to fishing for all species except king salmon year-round.
- **Upstream of Deception Creek:**
 - **Closed to salmon fishing.**
- **Deception Creek drainage:**
 - **Closed to salmon fishing.**
 - **Closed to all fishing April 15–June 14.**

- **Willow Creek drainage lakes (Crystal, Long, Rainbow, Shirley and Willow):**

- **Closed year-round to all salmon fishing.**

- Rainbow/steelhead trout: Open year-round.
- Arctic grayling: No retention. All Arctic grayling caught must be released immediately.

- **Crystal Lake:**

- Rainbow/steelhead trout limits: 5 per day, 5 in possession, only 1 may be over 20 inches in length.
- Northern pike:
 - Sport fishing through the ice for northern pike is allowed using 5 lines provided that:
 - standard ice fishing gear is used;
 - the fishing gear is closely attended, and;
 - all other species of fish caught are released immediately.

- **Long Lake:**

- Rainbow/steelhead trout limits: 2 per day, 2 in possession, only 1 may be over 20 inches in length.
- Northern pike:
 - Sport fishing through the ice for northern pike is allowed using 5 lines provided that:
 - standard ice fishing gear is used;
 - the fishing gear is closely attended, and;
 - all other species of fish caught are released immediately.

- **Rainbow Lake:**

- Rainbow/steelhead trout limits: 2 per day, 2 in possession, only 1 may be over 20 inches in length.

- **Shirley Lake:**

- Rainbow/steelhead trout limits: 2 per day, 2 in possession, only 1 may be over 20 inches in length.

- **Willow Lake:**

- Rainbow/steelhead trout limits: 5 per day, 5 in possession, only 1 may be over 20 inches in length.

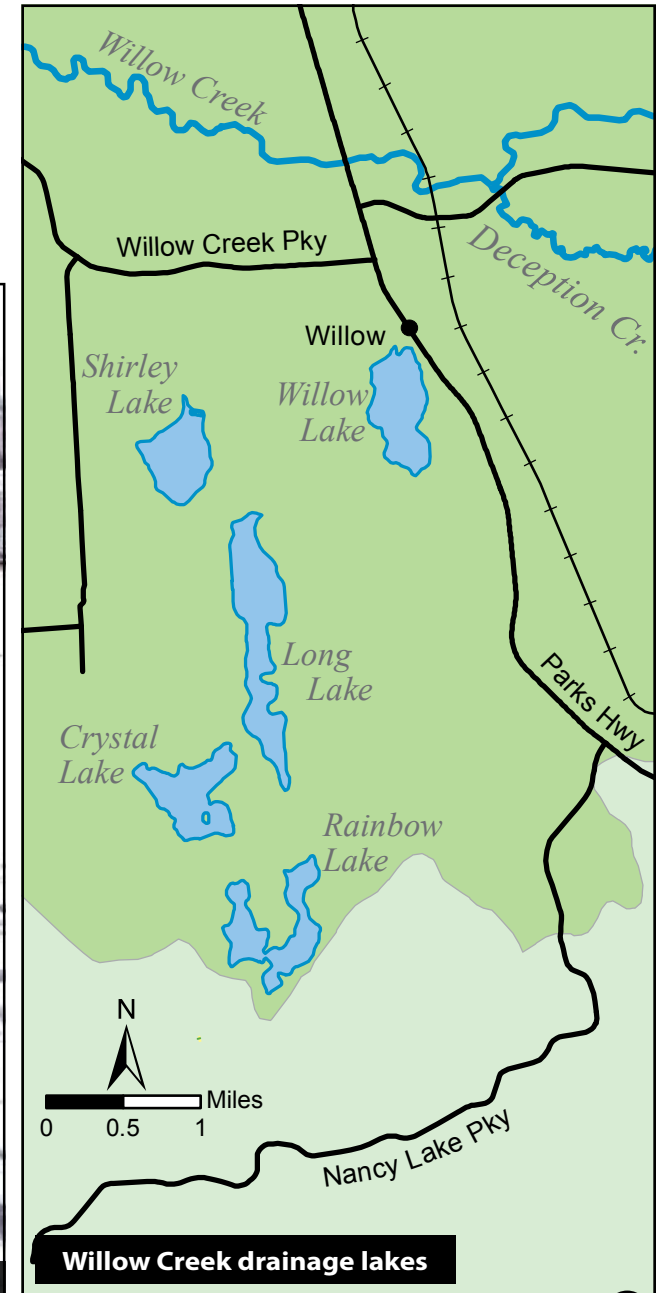
X Lake (near Talkeetna):

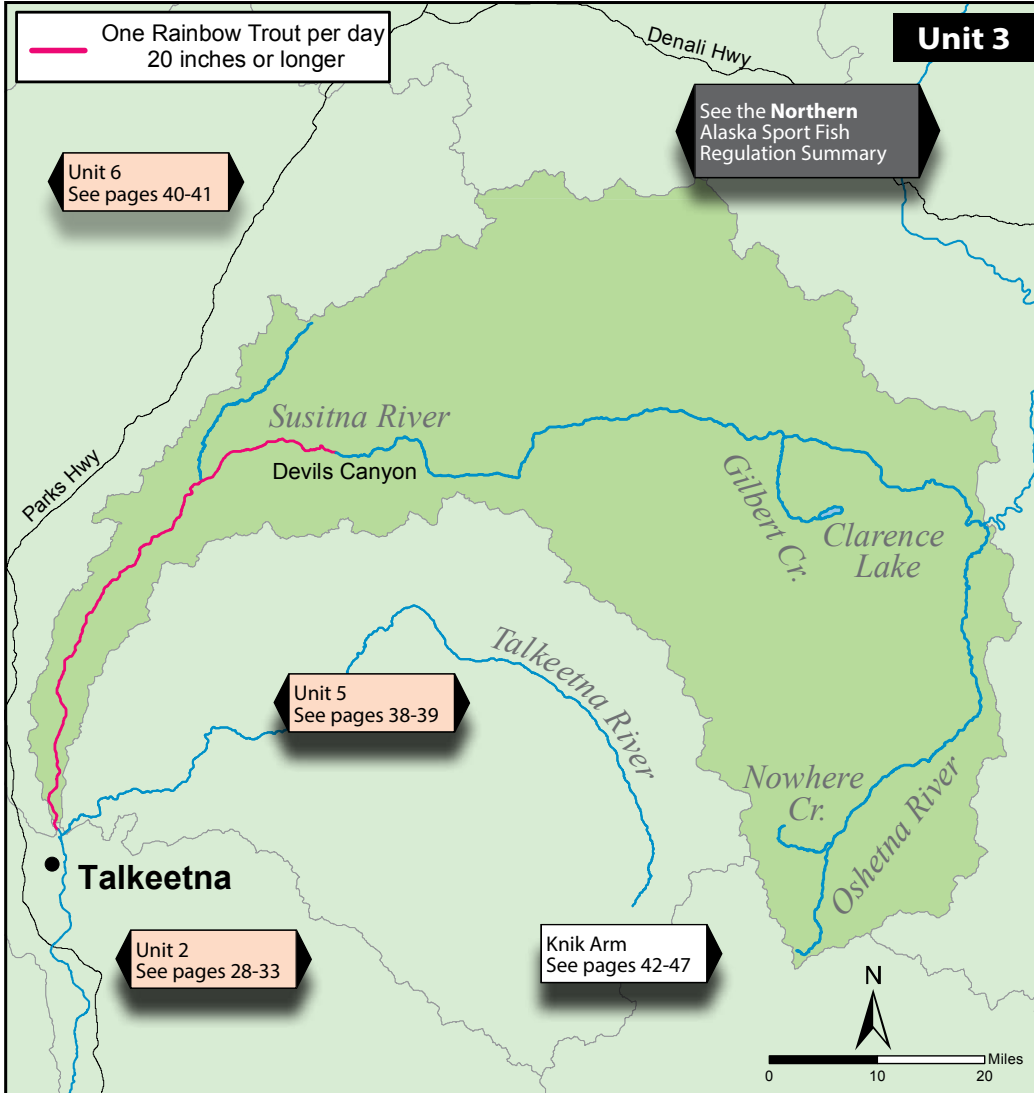
- **Closed to all fishing November 1–April 30.**

- Open season is May 1–October 31.
- Only one unbaited, single-hook, artificial lure is allowed.
- Rainbow trout/steelhead: No retention of rainbow trout allowed. All rainbow trout caught must be released immediately.



Fishing is cool





GENERAL REGULATIONS

Inclusive waters: Susitna River drainages from its confluence with the Talkeetna River upstream to its confluence with the Oshetna River (including the Oshetna River drainage, but excluding the Chulitna River drainage).

The Fishing Season for all species is open year-round unless otherwise noted below.

KING SALMON

- Upstream from its confluence with the Talkeetna, to and including Devils Canyon:
 - Season:** January 1–July 13:
 - May 15–July 13: Fishing is not allowed between 11:00 p.m. and 6:00 a.m. .
 - 20 inches or longer: 1 per day, 2 in possession.
 - A king salmon 20 inches or longer that is removed from salt or fresh water must be retained and becomes part of the bag limit of the person who originally hooked the fish. A person may not remove a king salmon 20 inches or longer from the water before releasing it.
 - There is a combined annual limit of 5 king salmon 20 inches or longer from the waters of the following areas: Cook Inlet Salt Waters, West Cook Inlet, Susitna River Drainage, Knik Arm, Anchorage Bowl, Kenai River and Kenai Peninsula.
 - Anglers who keep a king salmon 20 inches or longer must immediately record that harvest. See page 5 for recording instructions.
 - Less than 20 inches: 10 per day, 10 in possession.
- Upstream of Devils Canyon: **Closed to king salmon fishing.**

OTHER SALMON

- 16 inches or longer: 3 per day, 3 in possession.
 - A coho salmon 16 inches or longer that is removed from fresh water must be retained and becomes part of the bag limit of the person who originally hooked the fish. A person may not remove a coho salmon 16 inches or longer from the water before releasing it.
- Less than 16 inches: 10 per day, 10 in possession.



Spawning sockeye

RAINBOW/STEELHEAD TROUT

- In lakes and ponds: 2 per day, 2 in possession, only 1 of which may be 20 inches or longer.
- In flowing waters upstream from its confluence with the Talkeetna River to and including Devils Canyon:
 - June 15–April 14: 1 per day, must be 20 inches or longer.
 - April 15–June 14: No retention.
- In flowing waters upstream of Devils Canyon:
 - June 15–April 14: 2 per day, 2 in possession, only 1 of which may be 20 inches or longer.
 - April 15–June 14: No retention.
- 20 inches or longer:
 - There is a total annual limit of 2 rainbow/steelhead trout 20 inches or longer taken north of the latitude of Point Adam, from the waters of the following areas: West Cook Inlet, Susitna River Drainage, Knik Arm, Anchorage Bowl, Kenai Lake drainages, Kenai River tributaries, and Kenai Peninsula.
 - Anglers who keep a rainbow/steelhead trout 20 inches or longer must immediately record that harvest. See page 5 for recording instructions.

ARCTIC CHAR/DOLLY VARDEN

- 5 per day, 5 in possession, only 1 of which may be 12 inches or longer.

ARCTIC GRAYLING

- Upstream from its confluence with the Talkeetna River, to and including Devils Canyon:
 - 2 per day, 2 in possession.
- Upstream of Devils Canyon:
 - 5 per day, 5 in possession.

BURBOT

- 5 per day, 5 in possession.
- Bait is allowed while fishing for burbot, and burbot may be taken with more than one line and hook only if:
 - The total number of aggregate hooks/lines does not exceed the daily bag limit for burbot in the water being fished;
 - The hooks are single hooks with a gap between point and shank larger than $\frac{3}{4}$ inch;
 - Each hook is set to rest on the bottom of the lake or stream; and
 - Lines must be tended at least once each 24 hours.
- When fishing for burbot, all other fish caught must be released immediately.

NORTHERN PIKE

- No limit.
- **Live Release Prohibited.** Anglers are not allowed to release live pike back into the water. Pike not retained for personal use may be disposed of through lawful and safe methods, including returning dead pike to the water.
- Northern pike may be taken by spear, sport fishing gear, ice fishing gear, or by bow and arrow (the arrow must be attached to the bow with a line and the arrow must have a barbed tip).
- When fishing through the ice for northern pike, anglers may use two hooks on a single line, provided that both hooks are attached to one single piece of bait.

LAKE TROUT

- 2 per day, 2 in possession.

OTHER FINFISH

- No limit.

METHODS AND MEANS

Bait restrictions:

- In all flowing waters of Unit 3, only one unbaited, single-hook, artificial lure is allowed year-round.

SPECIAL REGULATIONS

Clarence Lake:

- Rainbow/steelhead trout limits: 2 per day, 2 in possession, only 1 of which may be 20 inches or longer.
- Arctic grayling limits: 2 per day, 2 in possession.

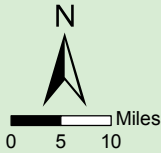
Susitna River:

- **Upstream from its confluence with the Talkeetna River, to and including Devils Canyon:**
 - Fishing is not allowed from 11:00 p.m.–6:00 a.m., May 15–July 13.
- **Upstream of its confluence with the Talkeetna River to Devils Canyon (excluding the Chulitna River drainage)— Trophy rainbow trout waters in Unit 3:**
 - Rainbow/steelhead trout limits:
 - 20 inches or longer:
 - 1 per day, 1 in possession. Annual limit of 2. Anglers who keep a rainbow/steelhead trout 20 inches or longer must immediately record that harvest. See page 5 for recording instructions.
 - Less than 20 inches:
 - No retention.

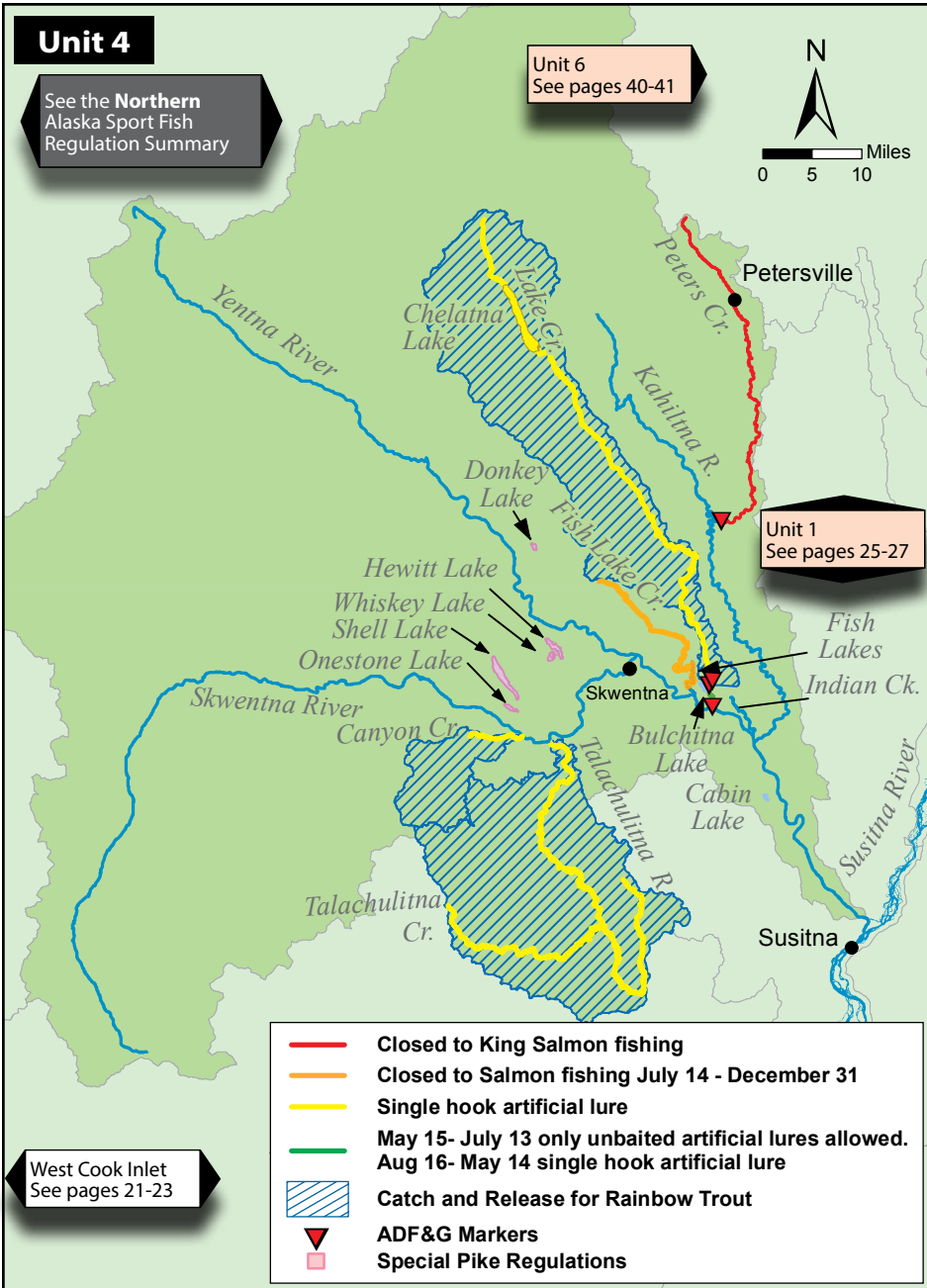
Unit 4

See the **Northern Alaska Sport Fish Regulation Summary**

Unit 6
See pages 40-41



Unit 1
See pages 25-27



West Cook Inlet
See pages 21-23

- Closed to King Salmon fishing
- Closed to Salmon fishing July 14 - December 31
- Single hook artificial lure
- May 15- July 13 only unbailed artificial lures allowed.
Aug 16- May 14 single hook artificial lure
- Catch and Release for Rainbow Trout
- ▼ ADF&G Markers
- Special Pike Regulations

GENERAL REGULATIONS

Inclusive waters: Flowing waters, lakes and ponds of the Yentna River drainage.
The Fishing Season for all species is open year-round unless otherwise noted below.

KING SALMON

- **Season:** January 1–July 13:
 - In waters open to king salmon fishing, fishing is not allowed between 11:00 p.m. and 6:00 a.m. May 15–July 13.
 - 20 inches or longer: 1 per day, 2 in possession.
 - A king salmon 20 inches or longer that is removed from salt or fresh water must be retained and becomes part of the bag limit of the person who originally hooked the fish. A person may not remove a king salmon 20 inches or longer from the water before releasing it.
 - There is a combined annual limit of 5 king salmon 20 inches or longer from the waters of the following areas: Cook Inlet Salt Waters, West Cook Inlet, Susitna River Drainage, Knik Arm, Anchorage Bowl, Kenai River and Kenai Peninsula.
 - Anglers who keep a king salmon 20 inches or longer must immediately record that harvest. See page 5 for recording instructions.
- Less than 20 inches: 10 per day, 10 in possession.

OTHER SALMON

- 16 inches or longer: 3 per day, 6 in possession.
 - A coho salmon 16 inches or longer that is removed from fresh water must be retained and becomes part of the bag limit of the person who originally hooked the fish. A person may not remove a coho salmon 16 inches or longer from the water before releasing it.
- Less than 16 inches: 10 per day, 10 in possession.

RAINBOW/STEELHEAD TROUT

- In lakes and ponds: 2 per day, 2 in possession, only 1 of which may be 20 inches or longer.
- In flowing waters:
 - June 15–April 14: 2 per day, 2 in possession, only 1 of which may be 20 inches or longer.
 - April 15–June 14: No retention.
- 20 inches or longer:
 - There is a total annual limit of 2 rainbow/steelhead trout 20 inches or longer taken north of the latitude of Point Adam, from the waters of the following areas: West Cook Inlet, Susitna River Drainage, Knik Arm, Anchorage Bowl, Kenai Lake drainages, Kenai River tributaries, and Kenai Peninsula.
 - Anglers who keep a rainbow/steelhead trout 20 inches or longer must immediately record that harvest. See page 5 for recording instructions.

ARCTIC CHAR/DOLLY VARDEN

- 5 per day, 5 in possession, only 1 of which may be 12 inches or longer.

ARCTIC GRAYLING

- 2 per day, 2 in possession.

NORTHERN PIKE

- No limit.
- **Live Release Prohibited.** Anglers are not allowed to release live pike back into the water. Pike not retained for personal use may be disposed of through lawful and safe methods, including returning dead pike to the water.
- Northern pike may be taken by spear, sport fishing gear, ice fishing gear, or by bow and arrow (the arrow must be attached to the bow with a line and the arrow must have a barbed tip).
- When fishing through the ice for northern pike, anglers may use two hooks on a single line, provided that both hooks are attached to one single piece of bait.

The following special rules apply to ice-fishing for northern pike in the waters listed below:

- Northern pike limits: Sport fishing through the ice for northern pike is allowed using 5 lines provided that:
 - Standard ice fishing gear is used;
 - the fishing gear is closely attended, and;
 - all other species of fish caught are released immediately.
 - **Cabin Lakes**
 - **Donkey Lake**
 - **Hewitt Lake**
 - **Indian Creek**
 - **Onestone lake**
 - **Shell Lake**
 - **Whiskey Lake**

LAKE TROUT

- 2 per day, 2 in possession.

BURBOT

- 5 per day, 5 in possession, no size limit.
- Bait is allowed while fishing for burbot, and burbot may be taken with more than one line and hook only if:
 - The total number of aggregate hooks/lines does not exceed the daily bag limit for burbot in the water being fished;
 - The hooks are single hooks with a gap between point and shank larger than 3/4 inch;
 - Each hook is set to rest on the bottom of the lake or stream; and
 - Lines must be tended at least once each 24 hours.
- When fishing for burbot, all other fish caught must be released immediately.

OTHER FINFISH

- No limit.

METHODS AND MEANS

Bait restrictions:

- In all flowing waters of Unit 4, only unbaited, artificial lures are allowed September 1–July 13.
- Bait is allowed July 14–August 31.

SPECIAL REGULATIONS

Canyon Creek:

- Only one unbaited, single-hook, artificial lure is allowed year-round.
- Rainbow/steelhead trout: No retention year-round.

Fish Lake Creek drainage:

- After taking a king salmon 20 inches or longer, a person may not fish for king salmon anywhere on that same day.
- **Upstream from the inlet of the first lake:**
 - January 1–July 13: Open season for salmon.

Lake Creek drainage:

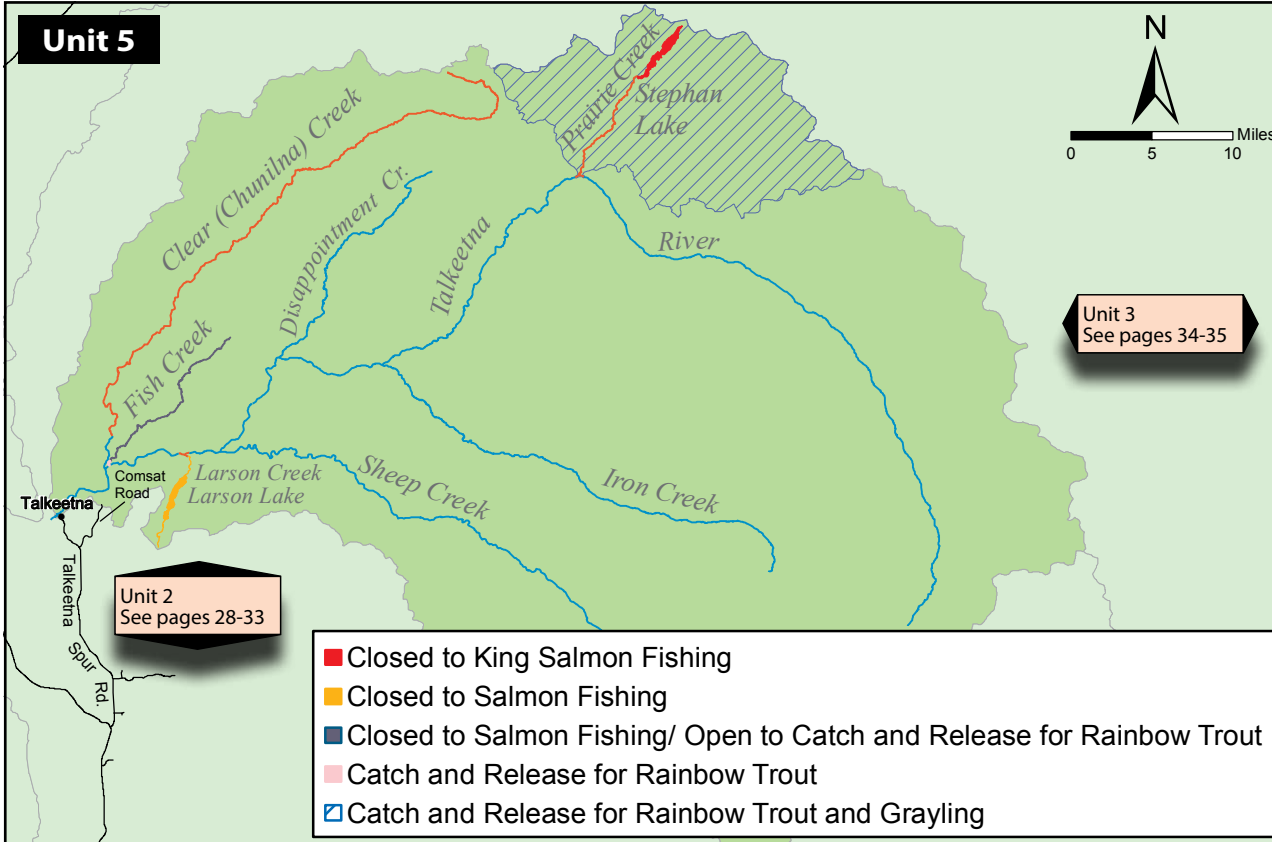
- King salmon limits: After taking a king salmon 20 inches or longer, a person may not fish for king salmon anywhere on that same day.
- **From ADF&G markers 100 yards upstream of its mouth to ADF&G markers 1/4 mile upstream of the creek that drains Bulchitna Lake (including Chelatna Lake):**
 - August 16–May 14: Only one unbaited, single-hook, artificial lure is allowed.
 - May 15–July 13: Only unbaited, artificial lures are allowed.
 - Rainbow/steelhead trout limit:
 - August 16–June 14: No retention.
 - June 15–August 15: 2 per day, 2 in possession, only 1 of which may be 20 inches or longer.
- **Upstream from ADF&G markers 1/4 mile upstream of the creek that drains Bulchitna Lake (including Chelatna Lake):**
 - Only one unbaited, single-hook, artificial lure is allowed year-round.
 - Rainbow trout/steelhead trout: No retention year-round.

Peters Creek

- **All waters upstream of ADF&G markers located 1 mile upstream:**
 - **Closed year-round to king salmon fishing.**

Talachulitna River drainage—including all waters within a 3/4-mile radius of its confluence with the Skwentna River:

- Only one unbaited, single-hook, artificial lure is allowed year-round.
- King salmon limits: Once an angler retains a king salmon 20 inches or longer, they must stop fishing for king salmon within a one mile radius of the mouth of the Talachulitna for the remainder of the day.
- Rainbow/steelhead trout: No retention year-round.



GENERAL REGULATIONS

Inclusive waters: Flowing waters, lakes and ponds of the Talkeetna River drainage.

The Fishing Season for all species is open year-round unless otherwise noted below.

KING SALMON

- **Season:** January 1–July 13:
 - In waters open to king salmon fishing, fishing is not allowed between 11:00 p.m. and 6:00 a.m. May 15–July 13.
 - 20 inches or longer: 1 per day, 2 in possession.
 - A king salmon 20 inches or longer that is removed from salt or fresh water must be retained and becomes part of the bag limit of the person who originally hooked the fish. A person may not remove a king salmon 20 inches or longer from the water before releasing it.
 - There is a combined annual limit of 5 king salmon 20 inches or longer from the waters of the following areas: Cook Inlet Salt Waters, West Cook Inlet, Susitna River Drainage, Knik Arm, Anchorage Bowl, Kenai River and Kenai Peninsula.
 - Anglers who keep a king salmon 20 inches or longer must immediately record that harvest. See page 5 for recording instructions.
- Less than 20 inches: 10 per day, 10 in possession.

OTHER SALMON

- 16 inches or longer: 3 per day, 3 in possession.
- A coho salmon 16 inches or longer that is removed from fresh water must be retained and becomes part of the bag limit of the person who originally hooked the fish. A person may not remove a coho salmon 16 inches or longer from the water before releasing it.
- Less than 16 inches: 10 per day, 10 in possession.



Early morning coffee alternative

© Mark Emery

ARCTIC CHAR/DOLLY VARDEN

- 5 per day, 5 in possession, only 1 of which may be 12 inches or longer.

ARCTIC GRAYLING

- 2 per day, 2 in possession.

LAKE TROUT

- 2 per day, 2 in possession.

RAINBOW/STEELHEAD TROUT

- In lakes and ponds: 2 per day, 2 in possession, only 1 of which may be 20 inches or longer.
- In flowing waters:
 - June 15–April 14: 2 per day, 2 in possession, only 1 of which may be 20 inches or longer.
 - April 15–June 14: No retention.
- 20 inches or longer:
 - There is a total annual limit of 2 rainbow/steelhead trout 20 inches or longer taken north of the latitude of Point Adam, from the waters of the following areas: West Cook Inlet, Susitna River Drainage, Knik Arm, Anchorage Bowl, Kenai Lake drainages, Kenai River tributaries, and Kenai Peninsula.
 - Anglers who keep a rainbow/steelhead trout 20 inches or longer must immediately record that harvest. See page 5 for recording instructions.

BURBOT

- 5 per day, 5 in possession, no size limit.
- Bait is allowed while fishing for burbot, and burbot may be taken with more than one line and hook only if:
 - The total number of aggregate hooks/lines does not exceed the daily bag limit for burbot in the water being fished;
 - The hooks are single hooks with a gap between point and shank larger than 3/4 inch;
 - Each hook is set to rest on the bottom of the lake or stream; and
 - Lines must be tended at least once each 24 hours.
- When fishing for burbot, all other fish caught must be released immediately.

NORTHERN PIKE

- No limit.
- **Live Release Prohibited.** Anglers are not allowed to release live pike back into the water. Pike not retained for personal use may be disposed of through lawful and safe methods, including returning dead pike to the water.
- Northern pike may be taken by spear, sport fishing gear, ice fishing gear, or by bow and arrow (the arrow must be attached to the bow with a line and the arrow must have a barbed tip).
- When fishing through the ice for northern pike, anglers may use two hooks on a single line, provided that both hooks are attached to one single piece of bait.

OTHER FINFISH

- No limit.

METHODS AND MEANS

Bait restrictions:

- In all flowing waters of Unit 5, only unbaited, artificial lures are allowed September 1–July 13.
- Bait is allowed July 14–August 31.



Nice rainbow trout



SPECIAL REGULATIONS

Clear (Chunilna) Creek drainage:

- After taking a king salmon 20 inches or longer, a person may not fish anywhere for king salmon on that same day.
- **Upstream of ADF&G markers 2 miles upstream from its mouth:**
 - **Closed to fishing for king salmon.**

Fish Creek drainage:

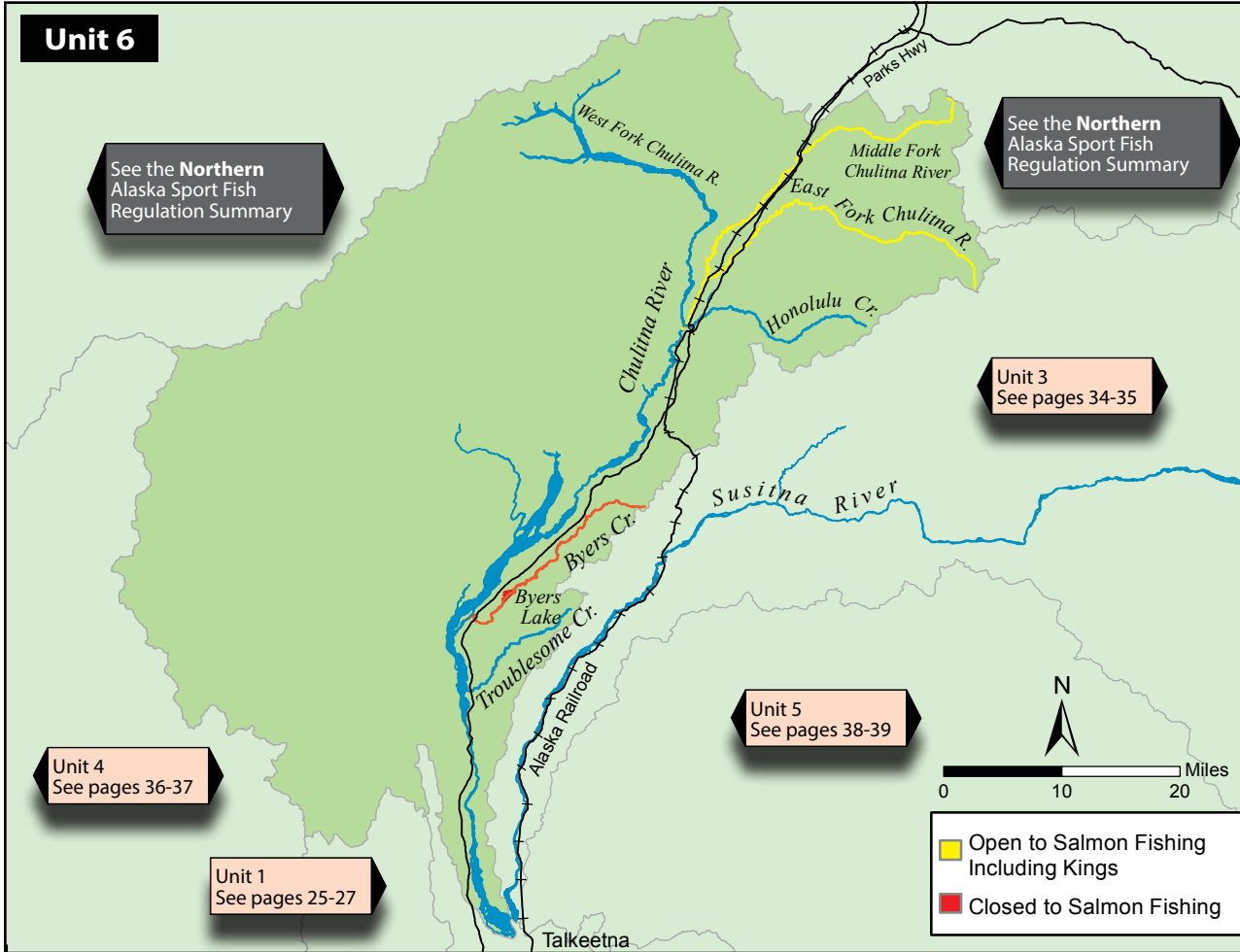
- Only one unbaited, single-hook, artificial lure is allowed.
- Rainbow/steelhead trout limits: No retention.
- **Upstream of an ADF&G marker 1/4 mile upstream of its confluence with the Talkeetna River:**
 - **Closed to fishing for all salmon year-round.**

Larson Creek drainage:

- **The Larson Creek drainage, including all waters within a 1/4-mile radius of its confluence with the Talkeetna River:**
 - **Closed to king salmon fishing.**
- **The Larson Creek drainage upstream of an ADF&G marker 1/4 mile upstream of its confluence with the Talkeetna River:**
 - **Closed to all salmon fishing.**

Prairie Creek drainage and all waters within a 1/4-mile radius of its confluence with the Talkeetna River:

- **Closed to king salmon fishing.**
- Only one unbaited, single-hook, artificial lure is allowed.
- Rainbow/steelhead trout and Arctic grayling limits: No retention.



GENERAL REGULATIONS

Inclusive waters: Flowing waters, lakes and ponds of the Chulitna River drainage.

The Fishing Season for all species is open year-round unless otherwise noted below.

KING SALMON

• **Generally, unit 6 is closed to fishing for king salmon, but see the special regulations for the Chulitna River.**

- A king salmon 20 inches or longer that is removed from salt or fresh water must be retained and becomes part of the bag limit of the person who originally hooked the fish. A person may not remove a king salmon 20 inches or longer from the water before releasing it.
- There is a combined annual limit of 5 king salmon 20 inches or longer from the waters of the following areas: Cook Inlet Salt Waters, West Cook Inlet, Susitna River Drainage, Knik Arm, Anchorage Bowl, Kenai River and Kenai Peninsula.
- Anglers who keep a king salmon 20 inches or longer must immediately record that harvest. See page 5 for recording instructions.
- After taking a king salmon 20 inches or longer, a person may not fish for any species of fish in any water open to king salmon fishing during that same day.

OTHER SALMON

- 16 inches or longer: 3 per day, 3 in possession.
- A coho salmon 16 inches or longer that is removed from fresh water must be retained and becomes part of the bag limit of the person who originally hooked the fish. A person may not remove a coho salmon 16 inches or longer from the water before releasing it.
- Less than 16 inches: 10 per day, 10 in possession.

ARCTIC CHAR/DOLLY VARDEN

- 5 per day, 5 in possession, only 1 of which may be 12 inches or longer.



A fly-fisherman prepares to release a southcentral Alaska rainbow trout

by Ken Marsh

RAINBOW/STEELHEAD TROUT

- In lakes and ponds: 2 per day, 2 in possession, only 1 of which may be 20 inches or longer.
- In flowing waters:
 - June 15–April 14: 2 per day, 2 in possession, only 1 of which may be 20 inches or longer.
 - April 15–June 14: No retention.
- 20 inches or longer:
 - There is a total annual limit of 2 rainbow/steelhead trout 20 inches or longer taken north of the latitude of Point Adam, from the waters of the following areas: West Cook Inlet, Susitna River Drainage, Knik Arm, Anchorage Bowl, Kenai Lake drainages, Kenai River tributaries, and Kenai Peninsula, except in the stocked lakes of the Knik Arm and Susitna River areas, where the annual limit is ten (10) rainbow/steelhead trout 20 inches or longer (see pages 84-85 for a list of stocked lakes in these areas).
 - Anglers who keep a rainbow/steelhead trout 20 inches or longer must immediately record that harvest. See page 5 for recording instructions.

ARCTIC GRAYLING

- 2 per day, 2 in possession.



Fishing is contemplative

LAKE TROUT

- 2 per day, 2 in possession.

BURBOT

- 5 per day, 5 in possession, no size limit.
- Bait is allowed while fishing for burbot, and burbot may be taken with more than one line and hook only if:
 - The total number of aggregate hooks/lines does not exceed the daily bag limit for burbot in the water being fished;
 - The hooks are single hooks with a gap between point and shank larger than 3/4 inch;
 - Each hook is set to rest on the bottom of the lake or stream; and
 - Lines must be tended at least once each 24 hours.
- When fishing for burbot, all other fish caught must be released immediately.

NORTHERN PIKE

- No limit.
- **Live Release Prohibited.** Anglers are not allowed to release live pike back into the water. Pike not retained for personal use may be disposed of through lawful and safe methods, including returning dead pike to the water.
- Northern pike may be taken by spear, sport fishing gear, ice fishing gear, or by bow and arrow (the arrow must be attached to the bow with a line and the arrow must have a barbed tip).
- When fishing through the ice for northern pike, anglers may use two hooks on a single line, provided that both hooks are attached to one single piece of bait.

OTHER FINFISH

- No limit.

METHODS AND MEANS

Bait restrictions:

- In all flowing waters of Unit 6, only unbaited, artificial lures are allowed September 1–July 13.
- Bait is allowed July 14–August 31.

SPECIAL REGULATIONS

Byers Creek drainage:

- **From its mouth upstream to the Parks Highway:**
 - Open to fishing for salmon (except king salmon).
- **From the Parks Highway upstream, including Byers Lake:**
 - **Closed year-round to fishing for all salmon.**

East Fork Chulitna River drainages—The East Fork of the Chulitna River and its drainages, including all waters within a ¼-mile radius of the confluence of the East Fork and West Fork of the Chulitna River, and including the Middle Fork of the Chulitna and the first ¼ mile of Honolulu Creek:

- January 1–July 13:
 - Only one unbaited, single-hook, artificial lure may be used January 1–July 13.
 - Open to fishing for all species, including king salmon:
 - King salmon limits:
 - King salmon may be kept only during January 1–June 16, June 21–23, June 28–30, and July 5–7.
 - 20 inches or longer: 1 per day, 1 in possession.
 - Less than 20 inches: 10 per day, 10 in possession.
- July 14–December 31: Open to fishing for all species except king salmon.

Jan. 1 - July 13	Open to all species, including king salmon.
Jan. 1 - June 20	King salmon may be retained.
June 21 - 24	No retention of king salmon.
June 25 - 27	King salmon may be retained.
June 28 - July 1	No retention of king salmon.
July 2 - 4	King salmon may be retained.
July 5 - 8	No retention of king salmon.
July 9 - 11	King salmon may be retained.
July 12 - 13	No retention of king salmon.
July 14 - Dec. 31	Open to all species, except king salmon.