



SHELLFISH REGULATIONS



North Slope, Northwestern and Kuskokwim-Goodnews Areas

Shellfish may be taken as follows:

1. Shrimp may be taken with pots and ring nets.
2. Crab may only be taken with pots, ring nets, diving gear, dip nets, hooked or hookless lines either operated by hand or attached to a pole, or by hand.
3. Clams may only be taken with rakes, shovels, manually operated clam guns, or by hand.
4. No more than 5 pots per person, and a maximum of 10 pots per vessel, regardless of type, may be used to take shellfish at any time.
5. All sport anglers shall plainly and legibly inscribe their first initial, last name, and home address on a keg or buoy attached to each pot. A keg or buoy attached to a pot must also be inscribed with the name or the Division of Motor Vehicles registration number (AK number) of the vessel used to operate the pot.
6. Escape mechanisms, as described in 5 AAC 39.145, must be provided for each pot.
7. The bag and possession limits for shellfish are not in addition to those allowed under either subsistence fishing regulations, or under personal use fishing regulations.
8. No person may mutilate or otherwise disfigure any crab in any manner which prevents the determination that the crab is of legal size until the crab has been processed for human consumption. No person may take or possess shellfish smaller than the minimum legal size limits.
9. In the waters south of 60°N. lat., male king crab may be taken only from June 1 through January 1.

Harvest record form: A person must obtain a harvest record form from the ADF&G office in Nome prior to fishing for king crab in the Norton Sound section of the Northern District.

Daily bag and Possession Limits:

RED KING CRAB

- Males only—6 per day, 6 in possession—4¾ inches or more.

BLUE KING CRAB

- Males only—6 per day, 6 in possession, 5½ inches or more (5 inches or more in the Northwestern Area).

DUNGENESS CRAB

- Males only—12 per day, 12 in possession, 6½ inches or more.

TANNER CRAB

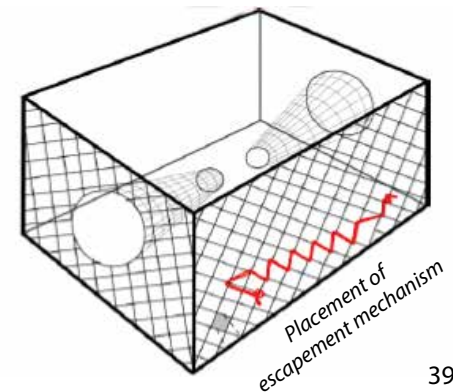
- Males only:
 - *C. bairdi*, 5½ inches or more
 - *C. opilio*, 3⅞ inches or more
 - 12 per day, 12 in possession (in combination).

Shellfish Pot Gear Escape Mechanisms

- Pot gear must include escape mechanisms in order to avoid waste of the resource in case the pot is lost.
- A sidewall, which may include the tunnel, must contain an opening at least 18 inches long (6 inches long for shrimp pots). The opening must be within 6 inches of the bottom of the pot, and must be parallel to the bottom of the pot.
- The opening must be laced, sewn, or secured together by a single length of untreated, 100 percent cotton twine no larger than 30-thread. The cotton twine may be knotted at each end only. The cotton twine may not be looped around or tied to the web bars.

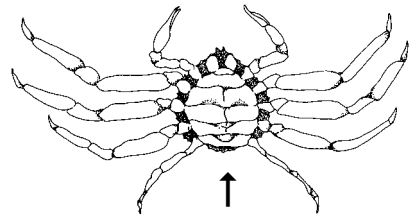
An owner, operator, or employee of a lodge, charter vessel, or other enterprise that furnishes food, lodging, or sport fishing guide services may not furnish to a client or guest of that enterprise, subsistence-, sport-, or personal use-caught shellfish, unless the shellfish:

- 1) Has been taken with gear deployed and retrieved by the client or guest;
- 2) Has been taken with gear that has been marked with the client's or guest's name and address; and
- 3) Is to be consumed by the client or guest or is consumed in the presence of the client or guest. The captain and crew members of a charter vessel may not deploy, set, or retrieve their own gear in a subsistence, sport, or personal use fishery when that vessel is being chartered.



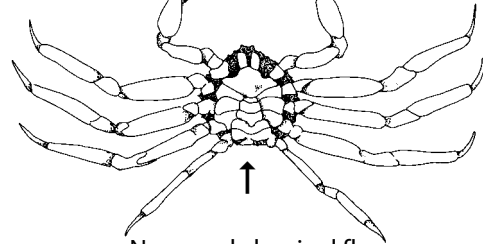
TANNER CRAB (*Chionoecetes bairdi* - minimum size 5½ inches / *Chionoecetes opilio* - minimum size 3⅛ inches)

Female - **NO HARVEST ALLOWED**

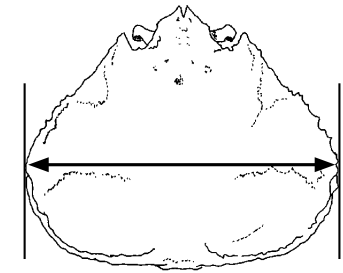


Wide abdominal flap covers most of underside (females usually smaller than 5½")

Male



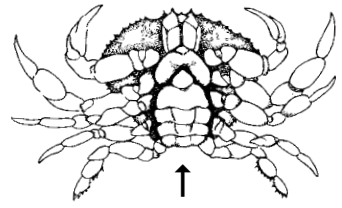
Narrow abdominal flap



Width measurement of Tanner crab is the straight-line distance across the carapace, **including** spines.

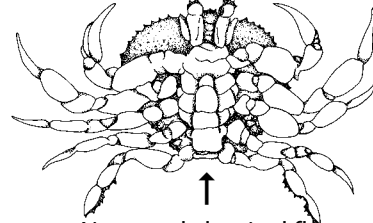
DUNGENESS CRAB (minimum size 6½ inches)

Female - **NO HARVEST ALLOWED**

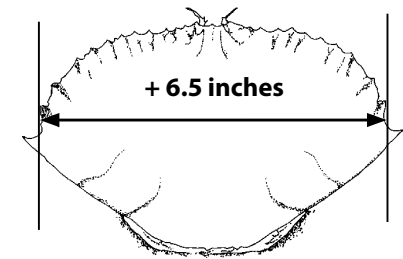


Wide abdominal flap covers most of underside

Male



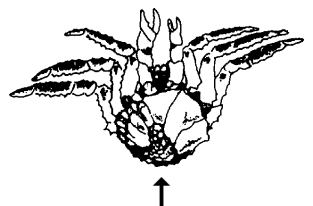
Narrow abdominal flap



Width measurement of Dungeness crab is the straight-line distance across the carapace, **NOT** including spines.

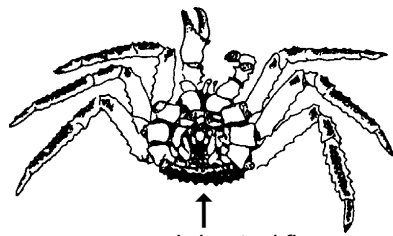
KING CRAB (Red King - minimum size 4¾ inches / Blue King - minimum size 5½ inches; 5 inches Northwestern area)

Female - **NO HARVEST ALLOWED**



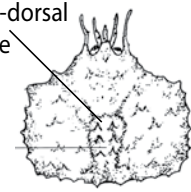
Wide abdominal flap covers most of underside

Male



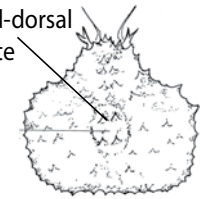
narrow abdominal flap

6 prominent spines on mid-dorsal plate



RED KING CRAB
(minimum size 4¾ inches)

4 prominent spines on mid-dorsal plate



BLUE KING CRAB
(minimum size 5½ inches; 5 inches Northwestern Area)

CRAB IDENTIFICATION AND MEASUREMENT