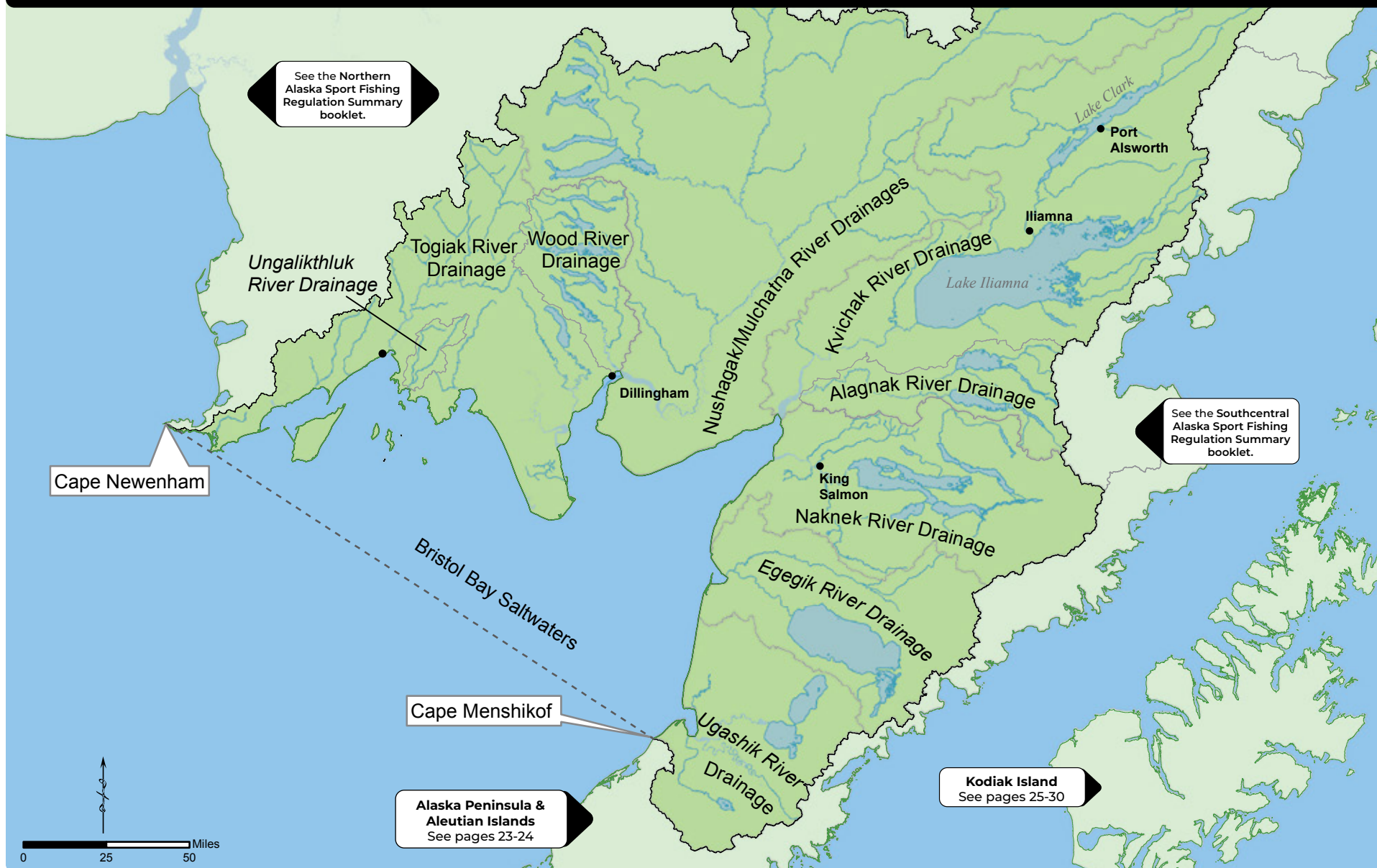


MAJOR DRAINAGES OF BRISTOL BAY



GENERAL REGULATIONS - BRISTOL BAY

Inclusive waters: All fresh waters draining into Bristol Bay between Cape Menshikof and Cape Newenham, and all salt waters east of a line from Cape Newenham to Cape Menshikof.

Fishing for all species is open year-round unless otherwise noted below.

Check for emergency orders online at www.adfg.alaska.gov/sf/EONR prior to fishing waters located within the Bristol Bay salt and fresh water areas.

KING SALMON

- **Open season:** May 1-July 31.
 - 20 inches or longer: There is an annual limit of 5 king salmon 20 inches or longer in Bristol Bay salt and fresh waters. Of those 5 total king salmon, no more than 4 may be harvested from the Nushagak/Mulchatna River Drainage, and no more than 2 may be harvested from the Wood River Drainage.
 - If you retain a king salmon 20 inches or longer, you must immediately record that harvest. See page 5 for recording instructions.
- **Fresh Waters:**
 - King salmon removed from the water must be retained. Any king salmon removed from the fresh water drainages of Bristol Bay from Cape Menshikof to Cape Newenham **MUST BE RETAINED** and becomes part of the bag limit of the person who originally hooked it. If you intend to release a king salmon, you may not remove it from the water before releasing it.
 - 20 inches or longer: 3 per day, 3 in possession, only 1 of which may be 28 inches or longer.
 - Less than 20 inches: 10 per day, 10 in possession.
- **Salt Waters:**
 - 3 per day, 3 in possession, only 2 of which may be 28 inches or longer.

OTHER SALMON

- 5 per day, 5 in possession.

ARCTIC CHAR AND DOLLY VARDEN

- **Season:** June 8-October 31.
 - 3 per day, 3 in possession.
- **Season:** November 1-June 7.
 - 10 per day, 10 in possession.

RAINBOW TROUT

- **Season:** June 8-October 31.
 - 2 per day, 2 in possession, only 1 of which may be 20 inches or longer.
- **Season:** November 1-June 7.
 - 5 per day, 5 in possession, only 1 of which may be 20 inches or longer.

ARCTIC GRAYLING

- 2 per day, 2 in possession.

LAKE TROUT

- 4 per day, 4 in possession.

NORTHERN PIKE

- 5 per day, 5 in possession, only 1 of which may be 20 inches or longer.

BURBOT

- 15 per day, 15 in possession.

HALIBUT

Pacific halibut fisheries are managed by the federal government under international treaty. See page 7 for federal contact information.

- **Season:** February 1-December 31.
- **Unguided anglers:** 2 per day, 4 in possession.
- **Consult federal regulations for the following:**
 - Bag, possession and size limits, and other regulations for guided (charter) anglers.
- **Filleting requirements for fish cleaned at sea:**
 - No person shall possess on board a vessel, including charter vessels and pleasure craft used for fishing, Pacific halibut that have been filleted, mutilated, or otherwise disfigured in any manner, except that each Pacific halibut may be cut into no more than 2 ventral pieces, 2 dorsal pieces, and 2 cheek pieces, with a patch of skin on each piece, naturally attached.

LINGCOD

- No limit.

ROCKFISH

- No limit.

KING CRAB

- **Season:** June 1-January 31.
 - Males only:
 - 6½ inches or more, 6 per day, 6 in possession.

DUNGENESS CRAB

- Males only:
 - 6½ inches or more, 12 per day, 12 in possession.

TANNER CRAB

- Males only:
 - 5½ inches or more, 12 per day, 12 in possession.

SHARKS (EXCEPT SPINY DOGFISH)

- 1 per day, 1 in possession, no size restrictions.
- Annual limit of 2 sharks. Harvest record required. See page 5 for recording instructions.

SPINY DOGFISH

- 5 per day, 5 in possession, no size limit. A harvest record is not required.

OTHER FINFISH

- No limit.

METHODS AND MEANS - BRISTOL BAY

CHUMMING:

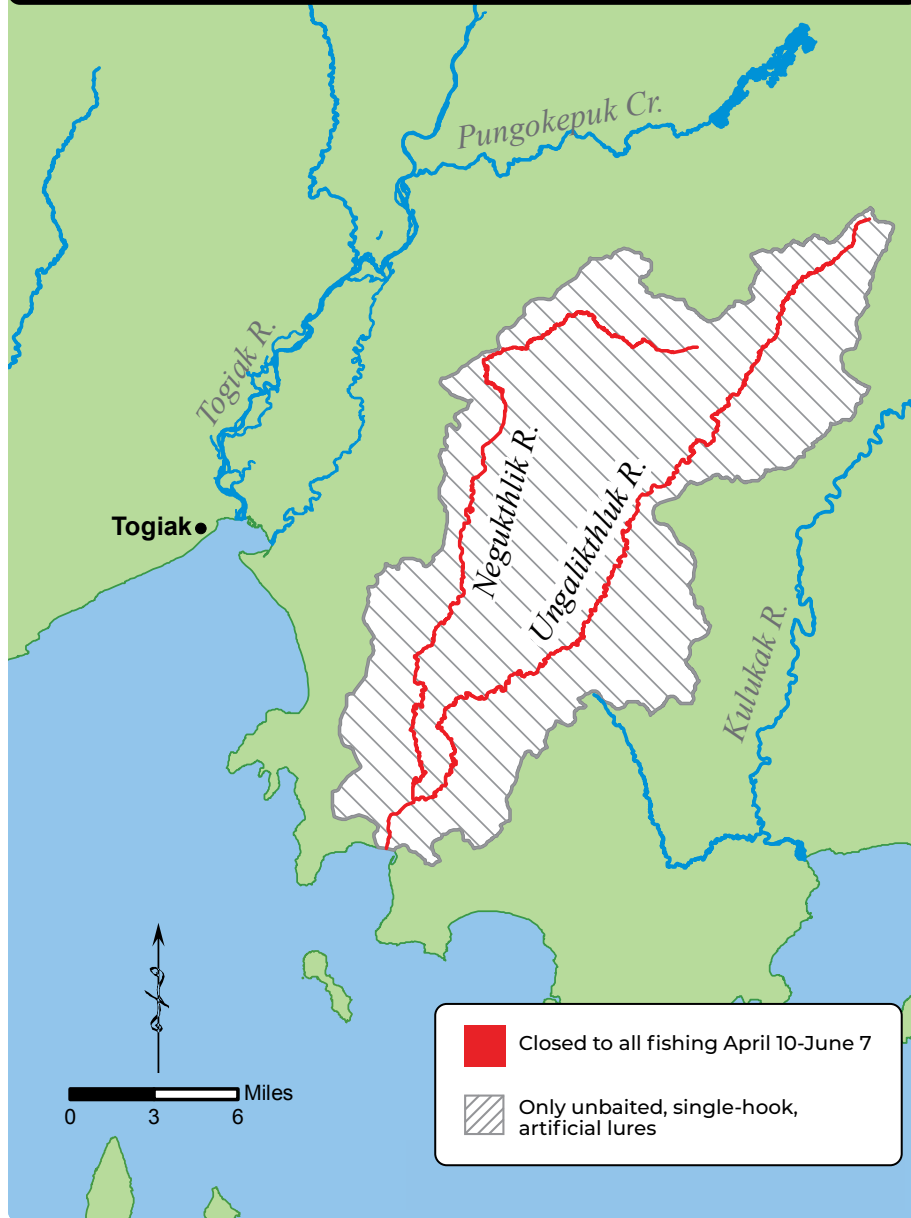
- In waters closed to the use of bait, sport fishing guides and guided anglers are prohibited from placing in the water any substance (bait) for the purpose of attracting fish by scent.

SPORT FISHING GUIDES AND THE RETENTION OF FISH:

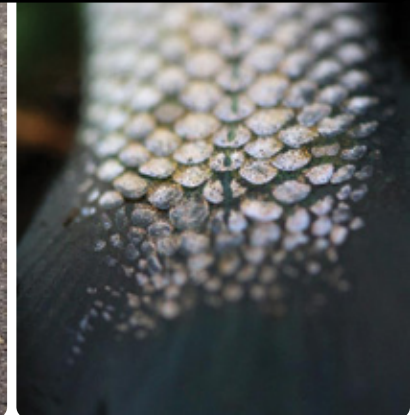
- A sport fishing guide may not retain fish while the guide is accompanying or personally directing the angler in fishing activities during any portion of a guided fishing trip.

...continued

UNGALIKTHLUK RIVER DRAINAGE



Bristol Bay resident species are fun to catch with family and friends.



SPECIAL REGULATIONS - BRISTOL BAY

UNGALIKTHLUK RIVER DRAINAGE - including the Negukthlik River:

- **June 8-April 9:** Open to fishing.
- Only unbaited, single-hook, artificial lures or flies may be used.
- Rainbow trout limits:
 - **June 8-October 31:** No retention of rainbow trout. All rainbow trout caught must be released immediately.
 - **November 1-April 9:** 5 per day, 5 in possession, only 1 of which may be 20 inches or longer.

...continued

SPECIAL REGULATIONS - BRISTOL BAY

WOOD RIVER DRAINAGE:

- Open to fishing year-round for species other than king salmon.
- **May 1-July 31:** Open to fishing for king salmon.
 - King salmon limits:
 - Less than 20 inches: 10 per day, 10 in possession.
 - 20 inches or longer: 1 per day, 1 in possession, only 1 of which may be 28 inches or longer.
 - There is an annual limit of 2 king salmon over 20 inches taken from the Wood River drainage. All harvested king salmon 20 inches or longer must be recorded; see page 5.
- **Agulowak River - from an ADF&G regulatory marker at the outlet of Lake Nerka, downstream to Lake Aleknagik, including waters of Lake Aleknagik within ½ mile of the Agulowak River outlet:**
 - Only unbaited, single-hook, artificial lures or flies may be used.
 - Rainbow trout limits: 1 per day, 1 in possession.
 - Arctic char/ Dolly Varden limits: 2 per day, 2 in possession.

• **Agulukpak River - from the outlet of Lake Beverly to the island located 1.2 miles downstream:**

- **September 1-June 7:** Only unbaited, single-hook, artificial lures or flies may be used.
- **June 8-August 31:** Only unbaited, single-hook, artificial flies may be used.
- Rainbow trout limits:
 - **June 8-October 31:** No retention. All rainbow trout caught must be released immediately.
 - **November 1-June 7:** 5 per day, 5 in possession, only 1 of which may be 20 inches or longer.
- **Kulik Lake:**
 - Northern pike: No retention of northern pike 30 inches or longer.



...continued

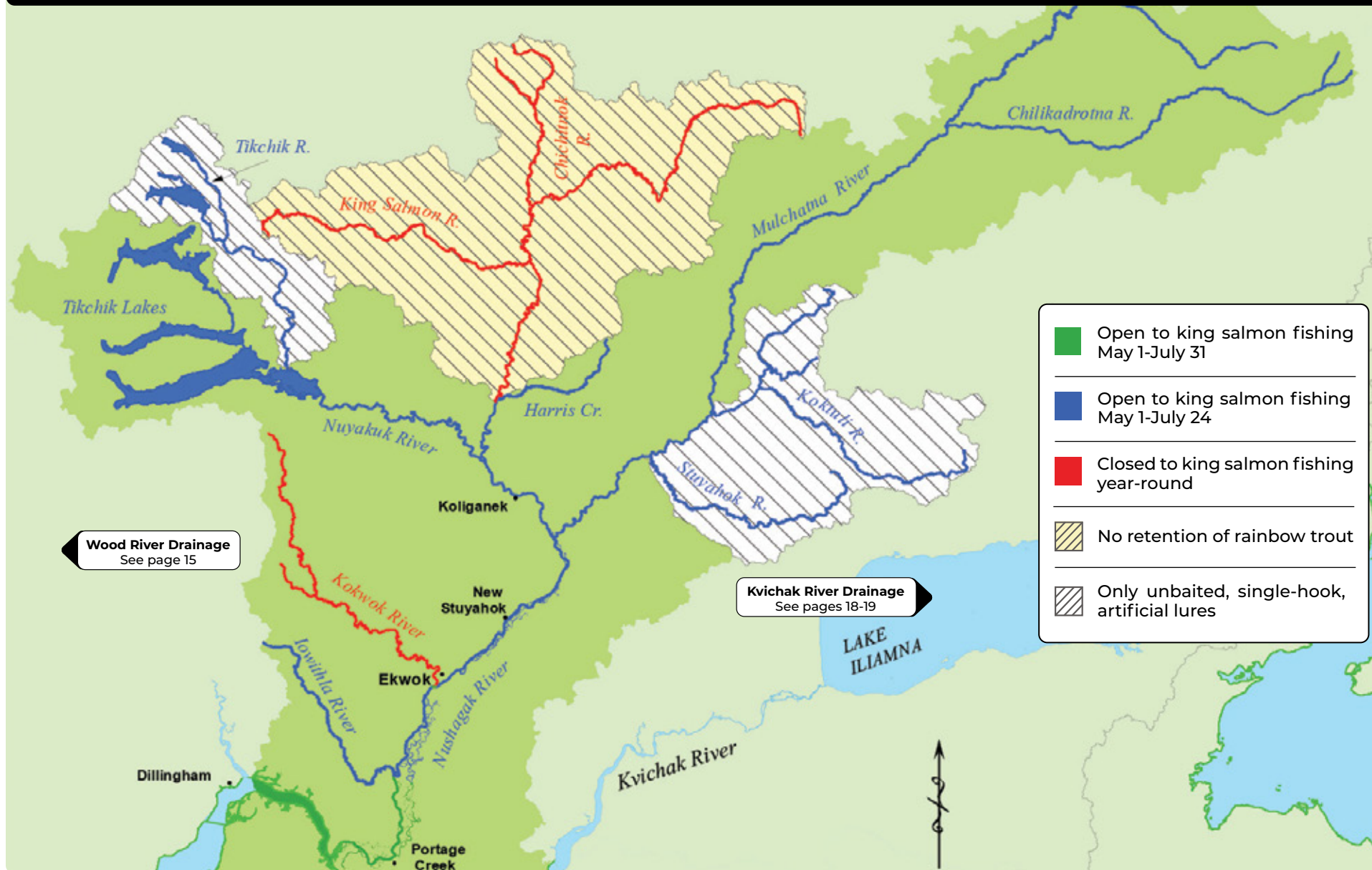


All the feels and smiles when you reel in a fish on your own.

WOOD RIVER DRAINAGE




NUSHAGAK/MULCHATNA RIVER DRAINAGE



The Nushagak/Mulchatna Chinook and Coho Salmon Management Plans may require inseason adjustments to the regulations (emergency orders) for seasons, bag limits, gear, and open waters, depending on escapement levels of king or coho salmon. See page 3 for instructions on how to check for emergency orders in the area you are fishing.

NUSHAGAK/MULCHATNA DRAINAGE:

- Open to fishing year-round for species other than king salmon.
- **May 1-July 31:** Only one single-hook lure or fly, or one single-hook may be used. The use of bait is allowed during this time frame. Refer to page 7 for number of allowable hooks per target species.
- **August 1-April 30:** Bait and multiple hooks are allowed.
- **In waters of the Nushagak/Mulchatna River drainage open to fishing for king salmon:**
 - King salmon limits:
 - 20 inches or longer:
 2 per day, 2 in possession, **only 1 king salmon 28 inches or longer may be retained annually from the Nushagak/ Mulchatna River drainage.**
 - After taking a bag limit of king salmon 20 inches or longer from the Nushagak/Mulchatna River drainage, you may only use **one unbaited, single-hook, artificial lures or flies** in the Nushagak/Mulchatna River drainage for the remainder of the day.
 - There is an annual limit of 4 king salmon over 20 inches taken from the entire Nushagak/Mulchatna drainage, only 1 of which may be 28 inches or longer.
 - All harvested king salmon 20 inches or longer must be recorded. See page 5 for recording instructions.
 - Less than 20 inches: 5 per day 5 in possession
 - **From its confluence with the Iowithla River, upstream to Harris Creek, including the Iowithla River:**
 - **May 1-July 24:** Open to fishing for king salmon.
 - **Upstream of its confluence with Harris Creek:**
 - **Closed year-round to fishing for king salmon.**
 - Bait prohibited, only unbaited, single-hook, artificial lures may be used year-round.
 - Rainbow trout: No retention year-round. All rainbow trout caught must be released immediately.

KOKWOK RIVER - including waters of the Nushagak River within ¼ mile of its confluence with the Kokwok River:

- Open to fishing year-round for species other than king salmon.
- Closed year-round to fishing for king salmon.

KOKTULI RIVER DRAINAGE:

- Open to fishing year-round for species other than king salmon.
- **May 1-July 24:** Open to fishing for king salmon.
- Only unbaited, single-hook, artificial lures or flies may be used year-round.

MULCHATNA RIVER DRAINAGE - from ADF&G markers about 1½ miles downstream from the Stuyahok River outlet, upstream to markers about 1½ miles upstream from the Koktuli River outlet:

- Open to fishing year-round for species other than king salmon.
- **May 1-July 24:** Open to fishing for king salmon.
- Only unbaited, single-hook, artificial lures or flies may be used year-round.

NUYAKUK RIVER - from the outlet of Tikchik Lake to an island located about 2 miles downstream from Nuyakuk Falls:

- Open to fishing year-round for species other than king salmon.
- **May 1-July 24:** Open to fishing for king salmon.
- Only unbaited, single-hook, artificial lures or flies may be used year-round.

STUYAHOK RIVER DRAINAGE:

- Open to fishing year-round for species other than king salmon.
- **May 1-July 24:** Open to fishing for king salmon.
- Only unbaited, single-hook, artificial lures or flies may be used year-round.

TIKCHIK RIVER DRAINAGE:

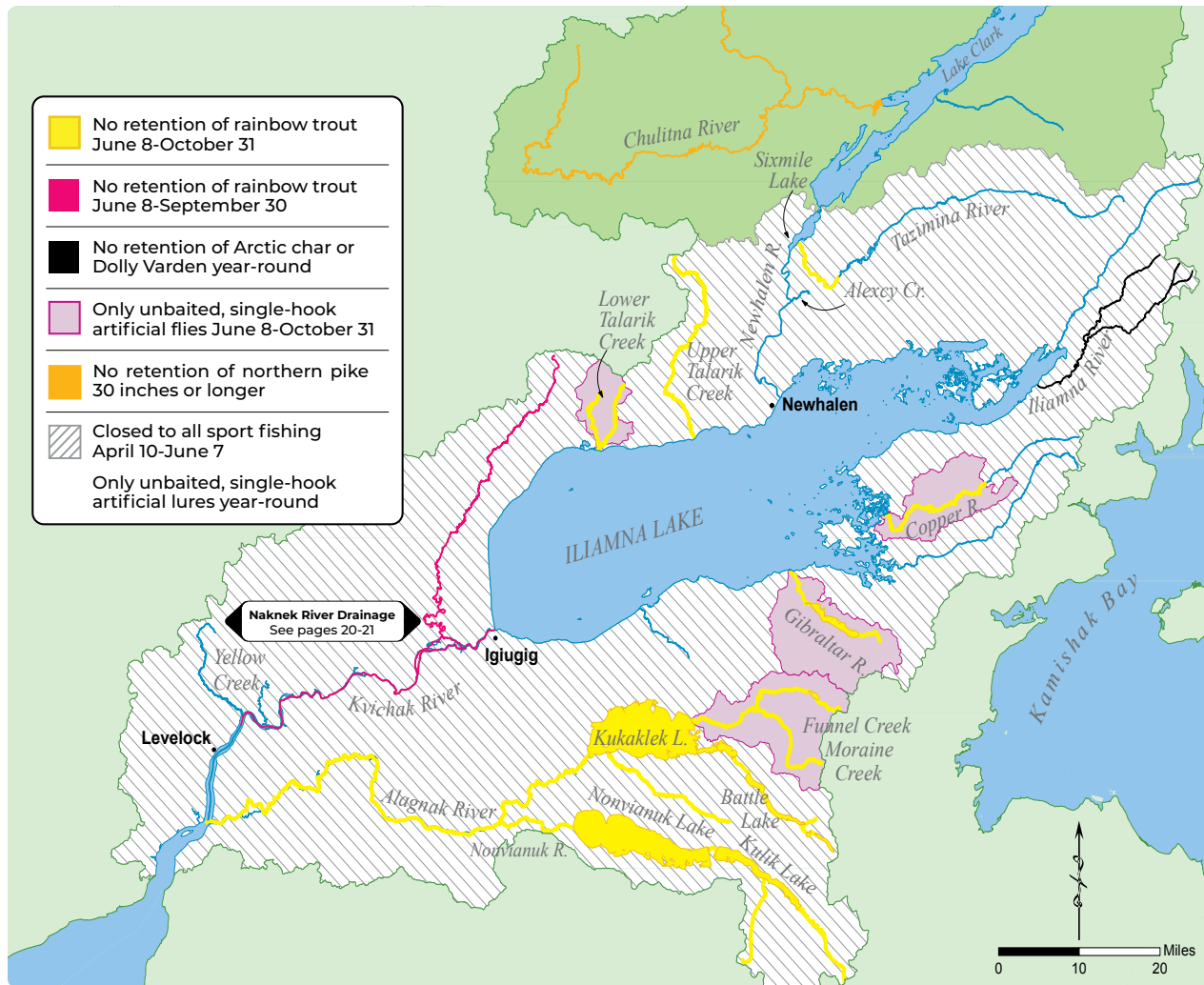
- Open to fishing year-round for species other than king salmon.
- **May 1-July 24:** Open to fishing for king salmon.
- Only unbaited, single-hook, artificial lures or flies may be used year-round.

...continued



A successful day of fishing for these anglers.

KVICHAK AND ALAGNAK RIVER DRAINAGES



The Kvichak In-river Sockeye Salmon Management Plan may require inseason changes to sockeye salmon bag limits and waters open to fishing, depending on escapement levels. See page 3 for instructions on how to check for emergency orders in the area you are fishing.

CHULITNA RIVER DRAINAGE - including waters of Lake Clark within 1 mile of the Chulitna River:

- Open to fishing year-round.
- Northern pike:
 - No retention of northern pike 30 inches or longer is allowed. All northern pike 30 inches or longer must be immediately released.

KVICHAK RIVER DRAINAGE:

Use of helicopters for transporting anglers and sport-caught fish is prohibited in the Kvichak River drainage.

- Salmon limits (except king salmon) excluding the Alagnak River drainage:
 - 5 per day, 5 in possession; only 2 per day, 2 in possession may be coho salmon.
- **Kvichak River upstream from its outlet in Kvichak Bay to Iliamna Lake:**
 - **April 10-June 7:** Closed to all sport fishing.
 - Only unbaited, single-hook, artificial lures or flies may be used year-round, except in lake waters more than a ½ mile radius from inlet or outlet streams.
- **Kvichak River from Kvichak Bay upstream to an ADF&G marker at the confluence of Yellow Creek:**
 - Rainbow trout limits:
 - **June 8-October 31:** 1 per day, 1 in possession, no size limit.
 - **November 1-April 9:** 5 per day, 5 in possession, only 1 of which may be 20 inches or longer.
- **From an ADF&G regulatory marker at the confluence of Yellow Creek upstream to the waters of Iliamna Lake within a ½ mile radius of its outlet at Igiugig:**
 - Rainbow trout limits:
 - **June 8-September 30:** No retention of rainbow trout is allowed. All rainbow trout must be immediately released.
 - **October 1-October 31:** 1 per day, 1 in possession, no size limit.
 - **November 1-April 9:** 5 per day, 5 in possession, only 1 of which may be 20 inches or longer.

ILIAMNA LAKE and all its tributaries, including the Newhalen River and tributaries, upstream to the outlet of Lake Clark:

- Open to fishing year-round except in lake waters within a ½ mile radius from inlet or outlet streams.
- Only unbaited, single-hook, artificial lures or flies may be used year-round, except in waters of lakes more than a ½-mile radius from inlet or outlet streams.
- **All flowing waters, and lake waters within a ½ mile radius of inlet or outlet streams:**
 - **April 10-June 7:** Closed to all sport fishing. In lake waters more than ½ mile distant from inlet or outlet streams, General Regulations and limits apply.
- **In all waters except those of lakes more than a ½ mile radius from inlet or outlet streams:**
 - Rainbow trout limits:
 - **June 8-October 31:** 1 per day, 1 in possession, no size limit.
 - **November 1-April 9:** 5 per day, 5 in possession, only 1 of which may be 20 inches or longer.

LOWER TALARIK CREEK - including waters of Lake Iliamna within ½ mile of the Lower Talarik Creek mouth:

- **June 8-October 31:** Bait prohibited. Only unbaited artificial flies may be used.
- **June 8-October 31:** Rainbow trout may not be retained. All rainbow trout must be immediately released.

UPPER TALARIK CREEK - including waters of Lake Iliamna within ½ mile of the Upper Talarik Creek mouth:

- **June 8-October 31:** Rainbow trout may not be retained. All rainbow trout must be immediately released.

GIBRALTAR RIVER DRAINAGE - including all flowing waters and the waters of Lake Iliamna within ½ mile of the Gibraltar River mouth:

- **June 8-April 9:** Open to fishing.
- **June 8-October 31:** Bait prohibited. Only unbaited artificial flies may be used.
- **June 8-October 31:** Rainbow trout may not be retained. All rainbow trout must be immediately released.

COPPER RIVER DRAINAGE - including all flowing waters downstream from Lower Copper Lake and the waters of Lake Iliamna within ½ mile of the Copper River mouth:

- **June 8-April 9:** Open to fishing.
- **June 8-October 31:** Bait prohibited. Only unbaited artificial flies may be used.
- **June 8-October 31:** Rainbow trout may not be retained. All rainbow trout must be immediately released.

TAZIMINA RIVER - from the falls, downstream to 1 mile upstream of its outlet into Sixmile Lake:

- **June 8-April 9:** Open to fishing.
- **June 8-October 31:** Rainbow trout may not be retained. All rainbow trout must be immediately released.

SIXMILE LAKE AND LAKE CLARK:

- **In all tributaries upstream of Sixmile Lake, including Lake Clark:**
 - Open to fishing year-round.
 - Rainbow trout limits:
 - **June 8-October 31:** 1 per day, 1 in possession, no size limit.
 - **November 1-June 7:** 5 per day, 5 in possession, only 1 of which may be 20 inches or longer.

ILIAMNA RIVER DRAINAGE:

- **June 8-April 9:** Open to fishing.
- Arctic char and Dolly Varden: No retention of Arctic char or Dolly Varden is allowed. All Arctic char or Dolly Varden must be released immediately.

ALAGNAK RIVER DRAINAGE (Unless further restricted below. See map on page 18):

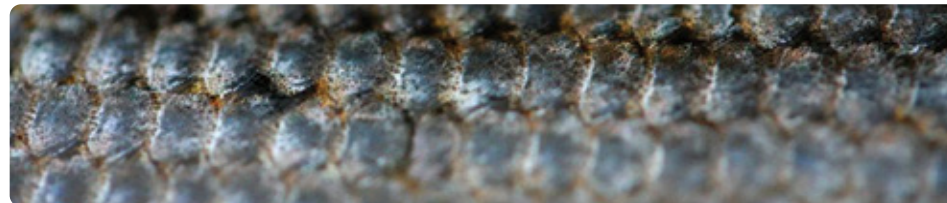
The use of helicopters for transporting anglers and sport-caught fish is prohibited.

- Salmon limits (all species except king): 5 per day, 5 in possession, only 3 per day, 3 in possession may be coho salmon. Limits for king salmon are the same as shown under General Seasons and Limits on page 13.
- Rainbow trout limits:
 - **June 8-October 31:** No retention of rainbow trout is allowed. All rainbow trout must be released immediately.
 - **November 1-April 9:** The daily limit is 5 per day, 5 in possession, must be less than 18 inches long.
- **Alagnak River Drainage** - all flowing waters of the Alagnak River drainage, including lake waters within ½ mile of all inlet and outlet streams:
 - **June 8-April 9:** Open to fishing.
 - Only unbaited, single-hook, artificial lures or flies may be used.

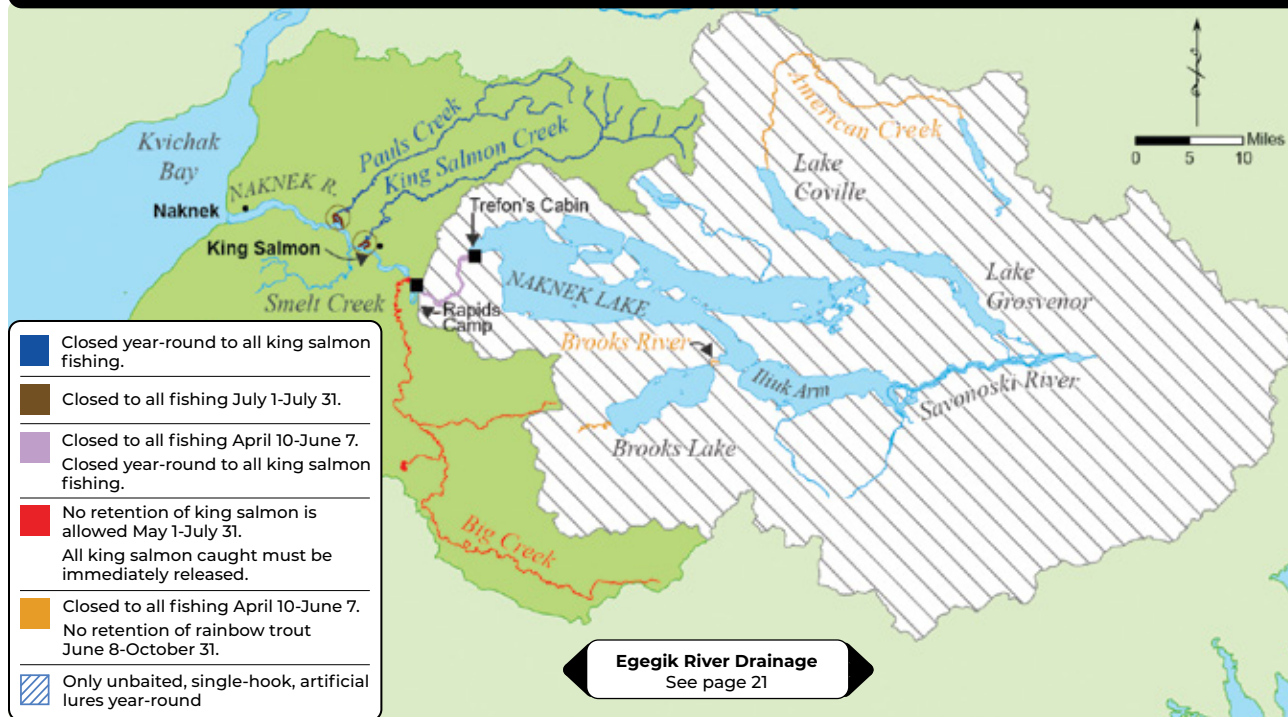
MORaine CREEK DRAINAGE (all flowing waters):

- **June 8-April 9:** Open to fishing.
- **June 8-October 31:** Only unbaited, single-hook, artificial flies may be used.

...continued



NAKNEK RIVER DRAINAGE



Naknek River Drainage Special Regulations continued...

- **Upstream from ADF&G markers located ½ mile above Rapids Camp to ADF&G markers at Trefon's cabin at the outlet of Naknek Lake:**
 - **Closed year-round to fishing for king salmon.**
 - **June 8-April 9:** Open to fishing.
 - **March 1-April 9** and from **June 8-July 31:** Only unbaited, single-hook, artificial lures or flies with a gap between the point and shank of ½ inch or less are allowed. For the remainder of the year, only unbaited, single-hook, artificial lures or flies may be used.
- **Within a 1/4 mile radius of Big Creek:**
 - **May 1-July 31:** King salmon may be retained. Bag limits and gear restrictions are the same as the remainder of the Naknek River.

NAKNEK RIVER YOUTH-ONLY FISHERY:

- If you are 15 years of age and younger, you may fish for all species in the designated Youth-Only fishery areas. Follow the Naknek River special regulations for king salmon and rainbow trout gear and bag limits, and general regulations for all other species and bag limits.
- A person 16 years or older may not sport fish on the Naknek River in the designated Youth-Only fishery areas on the dates listed below:

• Naknek River:

- Fishing is allowed on June 7.
- **Between the ADF&G regulatory markers posted above Rapids Camp:**
 - Fishing is allowed on the second Sunday in July. In 2023, this will be July 9, 2023.
- **Between the ADF&G regulatory markers posted above and below the mouth of King Salmon Creek including King Salmon Creek:**
 - Fishing is allowed on the second Sunday in August. In 2023, this will be August 13, 2023.

...continued



SPECIAL REGULATIONS

NAKNEK RIVER DRAINAGE:

- Open to fishing year-round.
- **In waters of the Naknek River drainage open to fishing for king salmon:**
 - King salmon limits:
 - 20 inches or longer: 3 per day, 3 in possession, one 1 may be 28 inches or longer.
 - There is an annual limit of 5 king salmon over 20 inches taken from the entire Naknek River drainage, only 3 of which may be over 28 inches long.
 - All harvested king salmon 20 inches or longer must be recorded. See page 5 for recording instructions.
 - Less than 20 inches: 10 per day, 10 in possession.

- Rainbow trout limits:
 - **June 8-October 31:** Unless further restricted below, in the Naknek River drainage, 1 per day, 1 in possession, must be less than 18 inches long.
 - **November 1-June 7:** 5 per day, 5 in possession, must be less than 18 inches long.
- **In all flowing waters:**
 - **March 1-November 14:** Only unbaited, artificial lures or flies may be used.
- **In all flowing waters upstream from an ADF&G regulatory marker located ½ mile upstream of Rapids Camp, including all waters within ¼ mile of all lake inlet and outlet streams:**
 - Only unbaited, single-hook, artificial lures or flies may be used year-round.

KING SALMON CREEK:

- Rainbow trout limits:
 - 1 per day, 1 in possession, must be less than 18 inches long.
- **Upstream from ADF&G markers at the confluence with the Naknek River to the upstream side of the Alaska Peninsula Highway bridge:**
 - **August 1-May 31:** Open to fishing.
- **Upstream of the Alaska Peninsula Highway Bridge:**
 - Open year-round to fishing for species other than king salmon.
 - **Closed year-round to fishing for king salmon.**

PAUL'S CREEK:

- Rainbow trout limits:
 - 1 per day, 1 in possession, must be less than 18 inches long.
- **Upstream from ADF&G markers at confluence with the Naknek River to the upstream side of the Alaska Peninsula Highway Bridge:**
 - **August 1-May 31:** Open to fishing.
- **Upstream of the Alaska Peninsula Highway Bridge:**
 - Open year-round to fishing for species other than king salmon.
 - **Closed year-round to fishing for king salmon.**

BIG CREEK - upstream of its confluence with the Naknek River:

- Open year-round to fishing for species other than king salmon.
- **May 1-July 31:** King salmon may not be retained.
 - All king salmon caught must be released immediately.

BROOKS RIVER DRAINAGE:

- Rainbow trout limits:
 - **June 8-October 31:** Unless further restricted below, all rainbow trout caught must be immediately released.
 - **November 1-June 7:** The bag and possession limit for rainbow trout is 5 fish less than 18 inches in length.
 - Any rainbow trout caught that are 18 inches or greater in length must be immediately released.
- **In all flowing waters of the Brooks River drainage, including lake waters within ¼ mile of all inlet and outlet streams and waters of Naknek Lake within ¼ mile of the outlet of the Brooks River:**
 - **June 8-April 9:** Open to sport fishing.
 - Only unbaited, single-hook, artificial flies may be used.
 - Rainbow trout limits:
 - **November 1-April 9:**
 - 5 per day, 5 in possession, must be less than 18 inches long.
- **The outlet of Brooks Lake downstream to the bridge at Brooks Camp:**
 - Open to catch-and-release only. No retention of any species is allowed. All fish caught must be released immediately.

Brooks River and Brooks Camp are within Katmai National Park. Additional National Park regulations may apply to access and conduct of the fishery. Please call (907) 246-3305 for more information.

SAVONOSKI RIVER DRAINAGE - including the waters of Naknek Lake within ¼ mile of the mouth of the Savonoski River, and including Lake Coville and Lake Grosvenor, but excluding American Creek:

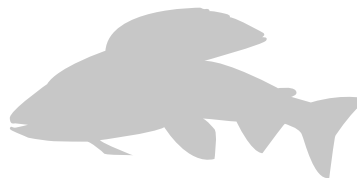
- Open to fishing year-round.
- Rainbow trout limits:
 - **June 8-October 31:** 1 per day, 1 in possession, no size limit.
 - **November 1-June 7:** 5 per day, 5 in possession, only 1 of which may be 20 inches or longer.

AMERICAN CREEK:

- **June 8-April 9:** Open to fishing.
- Rainbow trout limits:
 - **June 8-October 31:** No retention of rainbow trout is allowed. All rainbow trout must be released immediately.
 - **November 1-April 9:** 5 per day, 5 in possession, only 1 of which may be 20 inches or longer.

EGEGIK RIVER DRAINAGE - all waters, including Becharof Lake:

- Open to fishing year-round.
- Rainbow trout limits:
 - **June 8-October 31:**
 - 1 per day, 1 in possession, no size limit.
 - **November 1-June 7:**
 - 5 per day, 5 in possession, only 1 of which may be 20 inches or longer.
- **At Becharof Lake outlet, including the waters of Becharof Lake within ¼ mile of the outlet and the waters of the Egegik River within ¼ mile of the outlet:**
 - Arctic grayling: No retention. All Arctic grayling must be released immediately.



...continued

UGASHIK RIVER DRAINAGE - including Ugashik Lakes:

- Open to fishing year-round.
- Rainbow trout limits:
 - **June 8-October 31:** 1 per day, 1 in possession, no size limit.
 - **November 1-June 7:** 5 per day, 5 in possession, only 1 of which may be 20 inches or longer.
- **In Ugashik Narrows (the waters from the outlet of Upper Ugashik Lake downstream to the inlet of Lower Ugashik Lake, including those waters of Upper and Lower Ugashik Lakes within ¼ mile of the Ugashik Narrows):**
 - Arctic grayling: No retention. All Arctic grayling must be released immediately.
- **The Ugashik River:**
 - **Closed year-round to fishing for Arctic grayling.**
 - **In the remainder of the Ugashik drainage, including Ugashik Lakes and all Ugashik tributaries:**
 - Arctic grayling limits: 2 per day, 2 in possession.

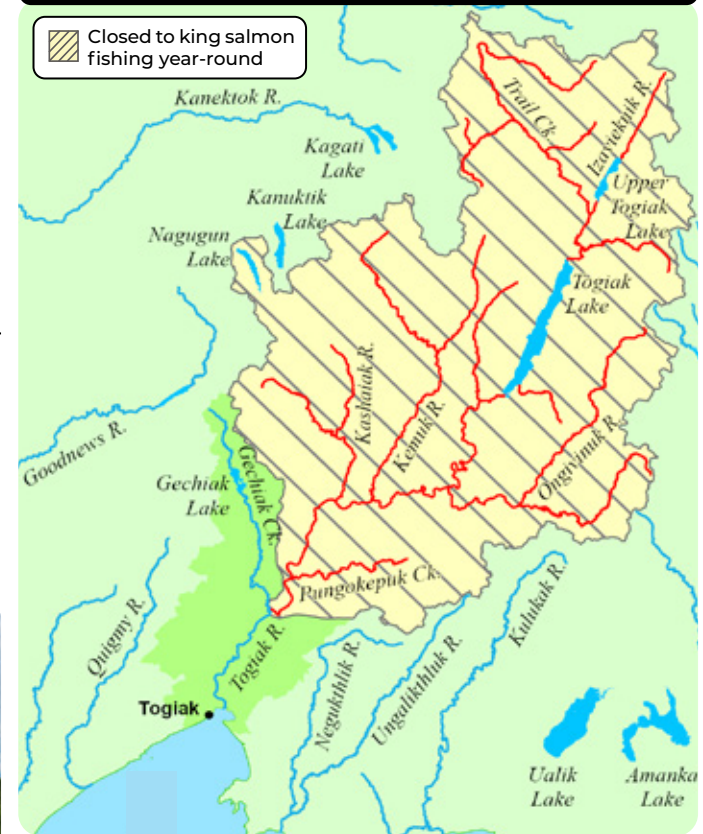
TOGIAC RIVER DRAINAGE:

- Only unbaited, single-hook, artificial lures or flies may be used.
- King salmon limits:
 - 20 inches or longer: no retention allowed. Any king salmon 20 inches or longer must not be removed from the water and must be released immediately.
 - Less than 20 inches: 10 per day, 10 in possession.
- **Upstream of the confluence of Gechiak Creek and the Togiak River:**
 - **Closed year-round to fishing for king salmon.**



Overcast skies make great days to be chasing fish on the river.

TOGIAC RIVER DRAINAGE



A beautiful Arctic grayling.