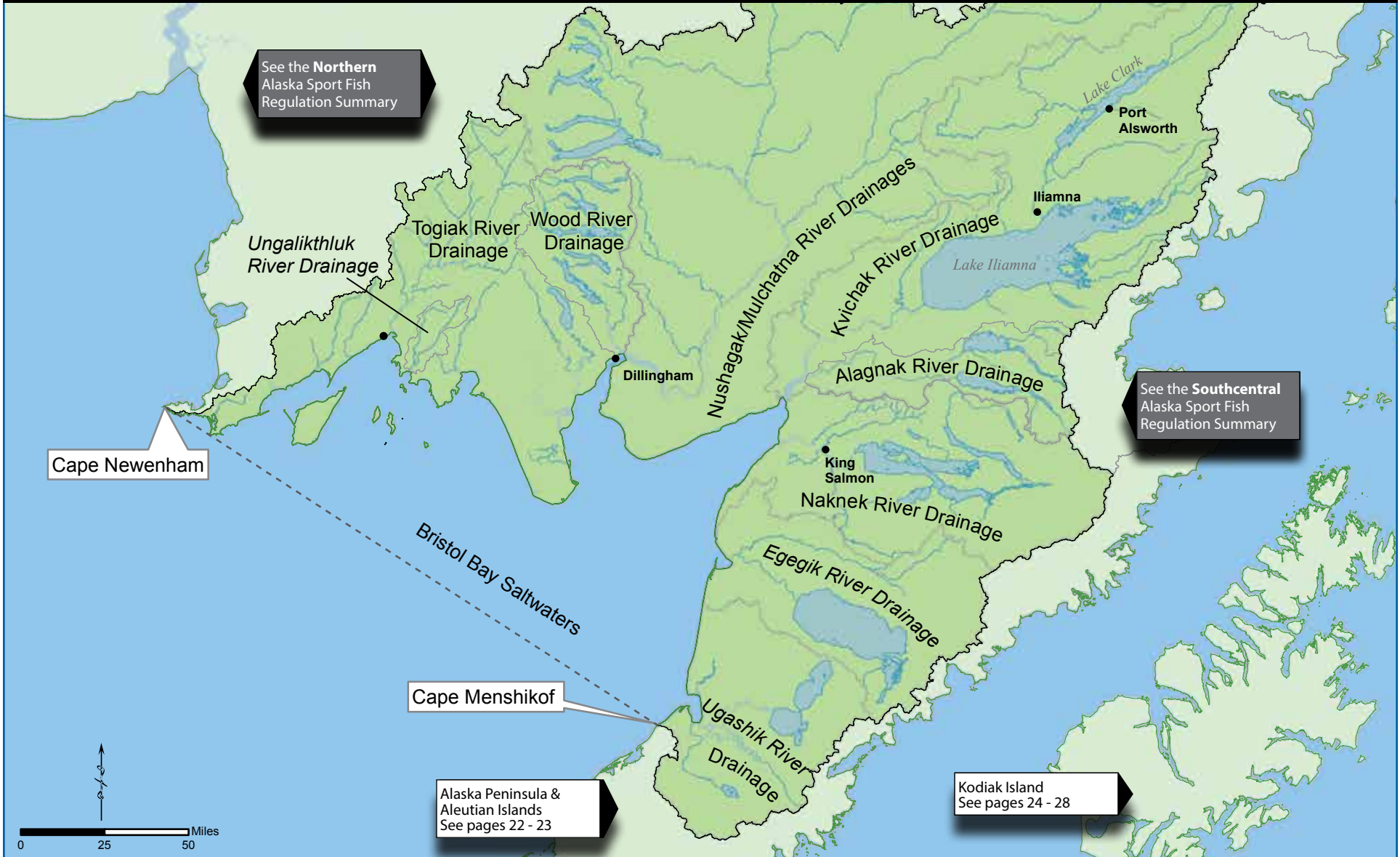


Major Drainages of Bristol Bay



General Regulations - Bristol Bay

Inclusive waters: All fresh waters draining into Bristol Bay between Cape Menshikof and Cape Newenham, and all salt waters east of a line from Cape Newenham to Cape Menshikof.

The fishing season for all species is open year-round unless otherwise noted below.

KING SALMON

- **Season:** May 1–July 31.
- 20 inches or longer— Annual limit of 5 king salmon 20 inches or longer in Bristol Bay salt and fresh waters. Of these 5 total king salmon, no more than 4 may be harvested from the Nushagak/Mulchatna river drainage, and no more than 2 may be harvested from the Wood River drainage. Harvest record required. See page 5 for recording instructions.
- **Fresh waters:**
 - **King salmon removed from the water must be retained:** Any king salmon removed from freshwater drainages of Bristol Bay from Cape Menshikof to Cape Newenham **MUST BE RETAINED** and becomes part of the bag limit of the person originally hooking it. If you intend to release a king salmon, you may not remove it from the water before releasing it.
 - 20 inches or longer: 3 per day, 3 in possession, only 1 of which may be 28 inches or longer.
 - Less than 20 inches: 10 per day, 10 in possession.
- **Salt waters:**
 - 3 per day, 3 in possession, only 2 of which may be 28 inches or longer.

OTHER SALMON

- 5 per day, 5 in possession.

ARCTIC CHAR AND DOLLY VARDEN

- **Season:** June 8–October 31.
 - 3 per day, 3 in possession.
- **Season:** November 1–June 7.
 - 10 per day, 10 in possession.

RAINBOW TROUT

- **Season:** June 8–October 31.
 - 2 per day, 2 in possession, only 1 of which may be 20 inches or longer.
- **Season:** November 1–June 7.
 - 5 per day, 5 in possession, only 1 of which may be 20 inches or longer.

ARCTIC GRAYLING

- 2 per day, 2 in possession.

LAKE TROUT

- 4 per day, 4 in possession.

NORTHERN PIKE

- 5 per day, 5 in possession, only 1 of which may be 30 inches or longer.

BURBOT

- 15 per day, 15 in possession.

HALIBUT

Pacific halibut fisheries are managed by the federal government under international treaty. See page 7 for federal contact information.

- **Season:** February 1–December 31.
- **Unguided anglers:** 2 per day, 4 in possession.
- Consult federal regulations for bag, possession and size limits and other regulations for guided (charter) anglers.
- **Filleting requirements for fish cleaned at sea:** No person shall possess on board a vessel, including charter vessels and pleasure craft used for fishing, Pacific halibut that have been filleted, mutilated, or otherwise disfigured in any manner, except that each Pacific halibut may be cut into no more than 2 ventral pieces, 2 dorsal pieces, and 2 cheek pieces, with a patch of skin on each piece, naturally attached.

LINGCOD

- No limit.

ROCKFISH

- No limit.

KING CRAB

- **Season:** June 1–January 31.
 - Males only:
 - 6½ inches or more: 6 per day, 6 in possession.

DUNGENESS CRAB

- Males only:
 - 6½ inches or more: 12 per day, 12 in possession.

TANNER CRAB

- Males only:
 - 5½ inches or more: 12 per day, 12 in possession.

SHARKS (EXCEPT SPINY DOGFISH)

- 1 per day, 1 in possession, no size restrictions.
- Annual limit of 2 sharks. Harvest record required. See page 5 for recording instructions.

SPINY DOGFISH

- 5 per day, 5 in possession—no size restrictions. Harvest record **not** required.

OTHER FINFISH

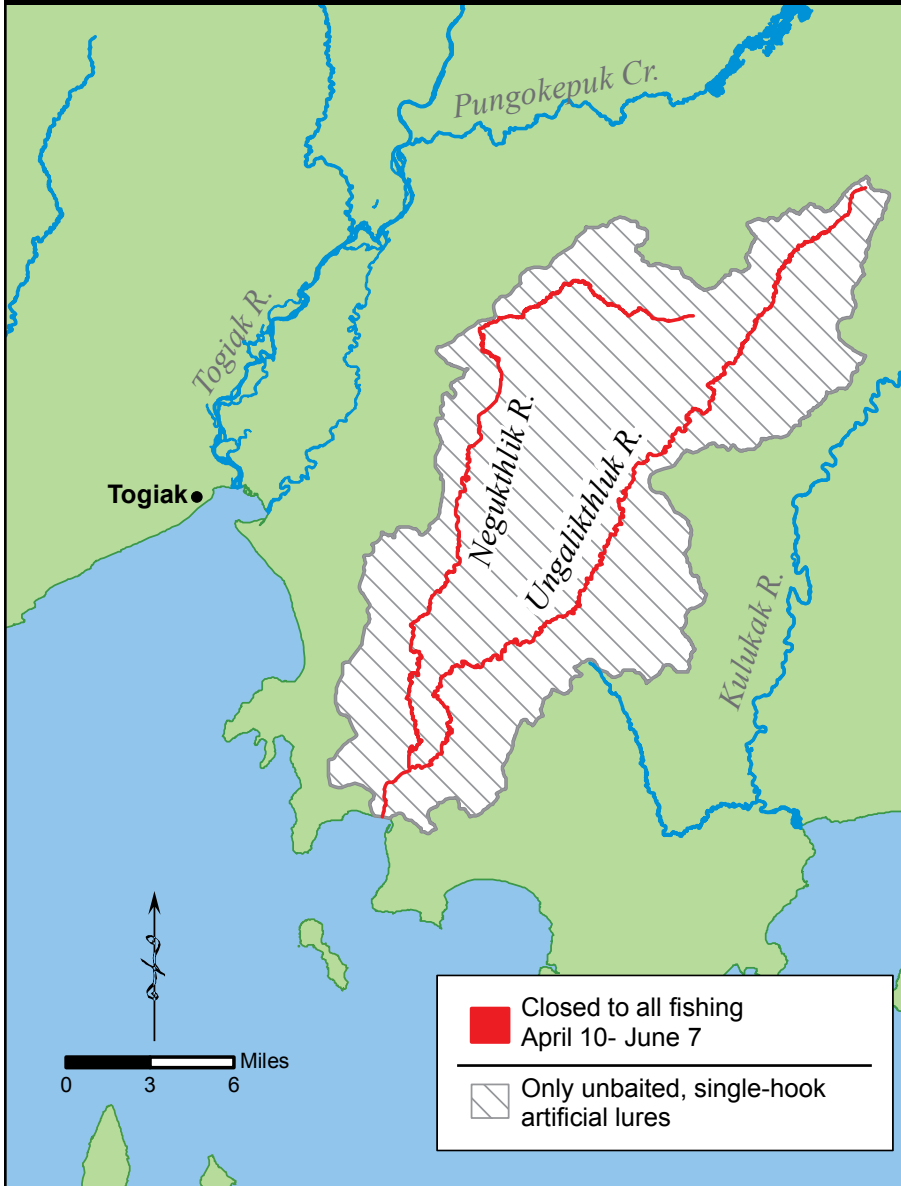
- No limit

Methods and Means - Bristol Bay

Chumming:

- In waters closed to the use of bait, sport fishing guides and guided anglers are prohibited from placing in the water any substance (bait) for the purpose of attracting fish by scent.

Ungalikthluk River Drainage



Special Regulations - Bristol Bay

Ungalikthluk drainage - including the Negukthlik River:

- **June 8–April 9:** Open to fishing.
- Only unbaited, single hook, artificial lures or flies may be used.
- Rainbow trout limits:
 - **June 8–Oct. 31:** No retention of rainbow trout. All rainbow trout caught must be released immediately.
 - **Nov. 1–April 9:** 5 per day, 5 in possession, only 1 may be over 20 inches.

Special Regulations - Bristol Bay

Wood River drainage:

- Open to fishing year-round for species other than king salmon.
- **May 1–July 31:** Open to fishing for king salmon.
- King salmon limits:
 - Less than 20 inches: 10 per day, 10 in possession.
 - 20 inches or longer: 1 per day, 1 in possession, only 1 over 28 inches.
 - There is an annual limit of 2 king salmon over 20 inches taken from the Wood River drainage. All harvested king salmon 20 inches or longer must be recorded; see page 5.
- **Agulowak River** (from an ADF&G regulatory marker at the outlet of Lake Nerka, downstream to Lake Aleknagik, including waters of Lake Aleknagik within ½ mile of the Agulowak River outlet):
 - Only unbaited, single hook, artificial lures or flies may be used.
 - Rainbow trout limits: 1 per day, 1 in possession.
 - Arctic char/ Dolly Varden limits: 2 per day, 2 in possession.

- **Agulukpak River** (From the outlet of Lake Beverly to the island located 1.2 miles downstream):
 - **Sept. 1–June 7:** Only unbaited, single hook, artificial lures or flies may be used.
 - **June 8–Aug. 31:** Only unbaited, single hook, artificial flies may be used.
 - Rainbow trout limits:
 - **June 8–Oct. 31:** No retention. All rainbow trout caught must be released immediately.
 - **Nov. 1–June 7:** 5 per day, 5 in possession, only 1 may be over 20 inches.

- **Kulik Lake:**

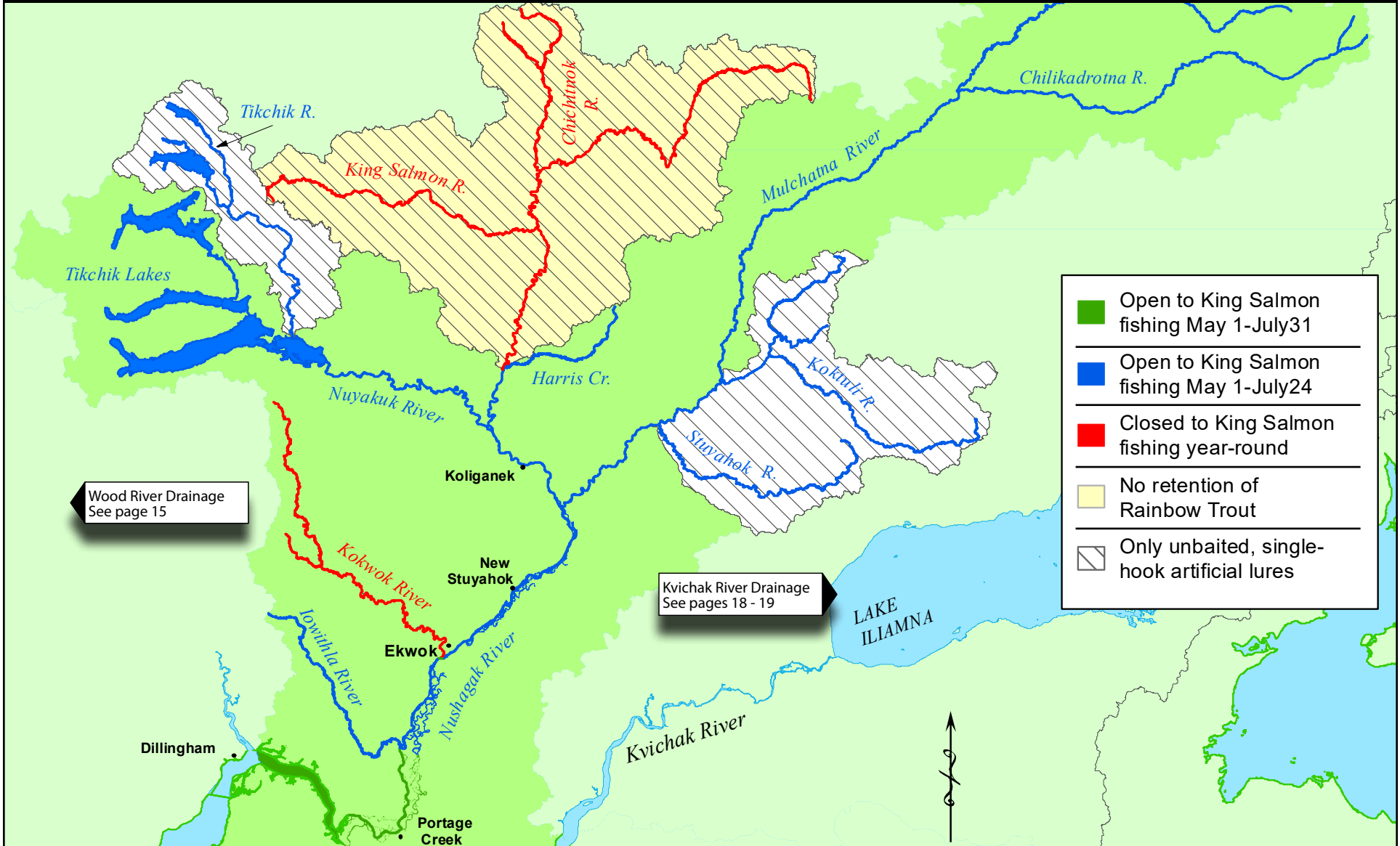
- Northern pike: No retention of northern pike 30 inches or longer.



Wood River



Nushagak/Mulchatna River Drainage



The Nushagak/Mulchatna Chinook and Coho Salmon Management Plans

may require inseason adjustments to the regulations (emergency orders) for seasons, bag limits, gear, and open waters, depending on escapement levels of king or coho salmon. See page 3 for instructions on how to check for emergency orders in the area you are fishing.

Nushagak/Mulchatna drainage:

- Open to fishing year-round for species other than king salmon.
- **May 1–July 31:** Only one single hook lure or fly, or one single hook may be used. The use of bait is allowed during this time frame. Refer to page 7 for number of allowable hooks per target species.
- **August 1–April 30:** Bait and multiple hooks are allowed.
- **In waters of the Nushagak/Mulchatna River drainage open to fishing for king salmon:**
 - King salmon limits:
 - 20 inches or longer:
 - 2 per day, 2 in possession, only 1 over 28 inches.
 - After taking a bag limit of king salmon 20 inches or longer from the Nushagak/Mulchatna River drainage, you may only use unbaited artificial lures or flies with *one single hook*, in the Nushagak/Mulchatna River drainage for the remainder of the day.
 - There is an annual limit of 4 king salmon over 20 inches taken from the entire Nushagak/Mulchatna drainage.
 - All harvested king salmon 20 inches or longer must be recorded. See page 5 for recording instructions.
 - Less than 20 inches: 5 per day 5 in possession
 - **From its confluence with the Iowithla River, upstream to Harris Creek, including the Iowithla River:**
 - **May 1–July 24:** Open to fishing for king salmon.
 - **Upstream of its confluence with Harris Creek:**
 - **Closed year-round to fishing for king salmon.**
 - Bait prohibited, only unbaited, single hook, artificial lures may be used year-round.
 - Rainbow trout: No retention year-round. All rainbow trout caught must be released immediately.

Kokwok River (including waters of the Nushagak River within ¼ mile of its confluence with the Kokwok River):

- Open to fishing year-round for species other than king salmon.
- Closed year-round to fishing for king salmon.

Koktuli River drainage:

- Open to fishing year-round for species other than king salmon.
- **May 1–July 24:** Open to fishing for king salmon.
- Only unbaited, single hook, artificial lures or flies may be used year-round.

Mulchatna River drainage—from ADF&G markers about 1½ miles downstream from the Stuyahok River outlet, upstream to markers about 1½ miles upstream from the Koktuli River outlet:

- Open to fishing year-round for species other than king salmon.
- **May 1–July 24:** Open to fishing for king salmon.
- Only unbaited, single hook, artificial lures or flies may be used year-round.

Nuyakuk River—from the outlet of Tikchik Lake to an island located about 2 miles downstream from Nuyakuk Falls:

- Open to fishing year-round for species other than king salmon.
- **May 1–July 24:** Open to fishing for king salmon.
- Only unbaited, single hook, artificial lures or flies may be used year-round.

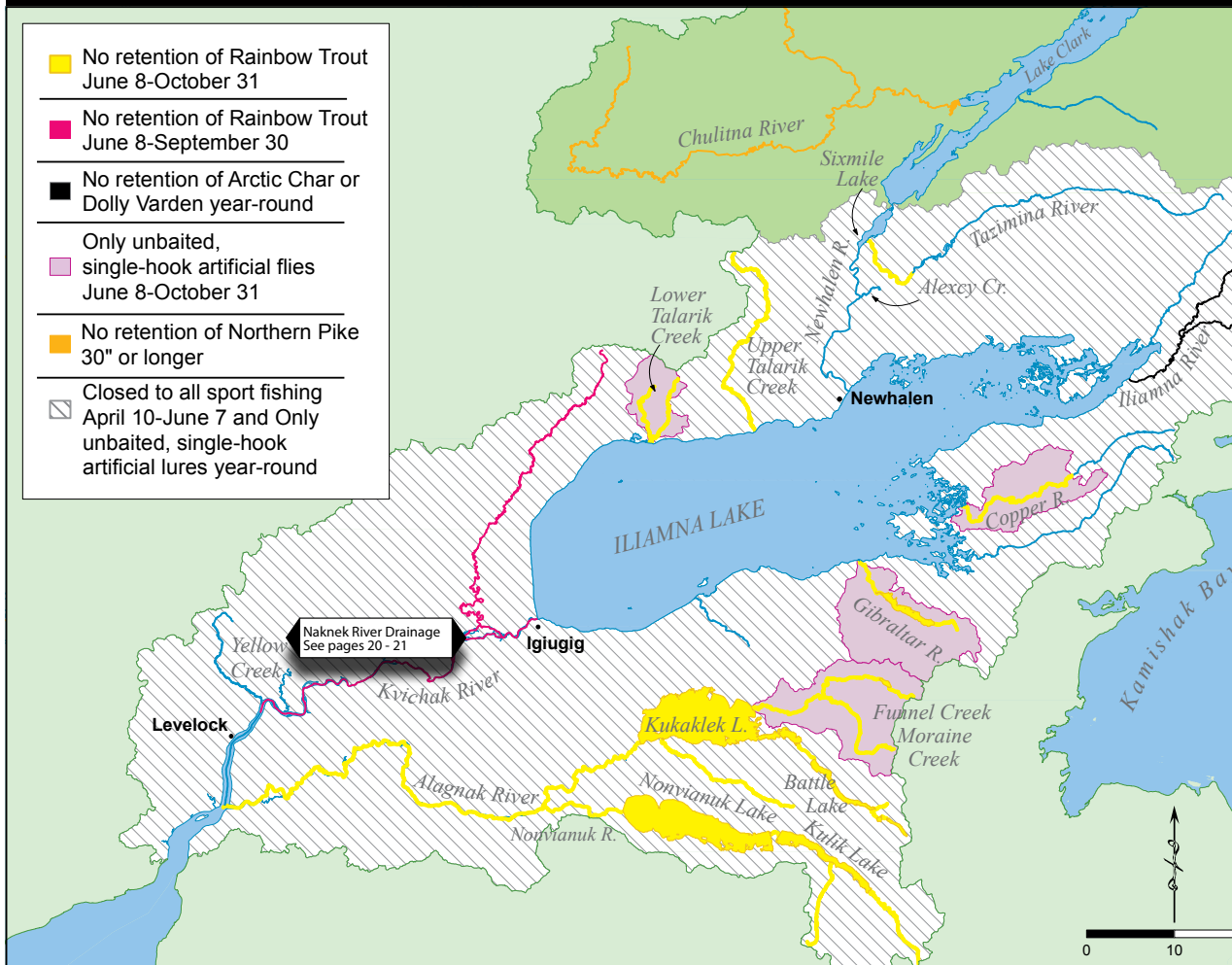
Stuyahok River drainage:

- Open to fishing year-round for species other than king salmon.
- **May 1–July 24:** Open to fishing for king salmon.
- Only unbaited, single hook, artificial lures or flies may be used year-round.

Tikchik River drainage:

- Open to fishing year-round for species other than king salmon.
- **May 1–July 24:** Open to fishing for king salmon.
- Only unbaited, single hook, artificial lures or flies may be used year-round.

Kvichak and Alagnak River Drainages



Chulitna River drainage (including waters of Lake Clark within 1 mile of the Chulitna River):

- Open to fishing year-round.
- Northern pike: No retention of northern pike 30 inches or longer is allowed. All northern pike 30 inches or longer must be immediately released.

Kvichak River drainage:

Use of helicopters for transporting anglers and sport-caught fish is prohibited in the Kvichak River drainage.

- Salmon limits (except king salmon) excluding the Alagnak River drainage: 5 per day, 5 in possession; only 2 per day, 2 in possession may be coho salmon.
- **Kvichak River upstream from its outlet in Kvichak Bay to Iliamna Lake:**
 - **April 10–June 7:** Closed to all sport fishing.
 - Only unbaited, single hook, artificial lures or flies may be used year-round, except in lake waters more than a ½-mile radius from inlet or outlet streams.
- **Kvichak River from Kvichak Bay upstream to an ADF&G marker at the confluence of Yellow Creek:**
 - Rainbow trout limits:
 - **June 8–Oct. 31:** 1 per day, 1 in possession, no size limit.
 - **Nov. 1–April 9:** 5 per day, 5 in possession, only 1 over 20 inches.
- **From an ADF&G regulatory marker at the confluence of Yellow Creek upstream to the waters of Iliamna Lake within a ½-mile radius of its outlet at Igiugig:**
 - Rainbow trout:
 - **June 8–Sept. 30:** No retention of rainbow trout is allowed. All rainbow trout must be immediately released.
 - **Oct. 1–Oct. 31:** 1 per day, 1 in possession, no size limit.
 - **Nov. 1–April 9:** 5 per day, 5 in possession, only 1 over 20 inches.

The Kvichak Inriver Sockeye Management Plan may require inseason changes to sockeye salmon bag limits and waters open to fishing, depending on escapement levels. See page 3 for instructions on how to check for emergency orders in the area you are fishing.

Kvichak River drainage (continued):

- **Iliamna Lake** and all its tributaries, including the Newhalen River and tributaries, upstream to the outlet of Lake Clark:
- Open to fishing year-round except in lake waters within a ½ mile radius from inlet or outlet streams.
- Only unbaited, single hook, artificial lures or flies may be used year-round, except in waters of lakes more than a ½-mile radius from inlet or outlet streams.
- **All flowing waters, and lake waters within a ½-mile radius of inlet or outlet streams:**
 - **April 10–June 7:** Closed to all sport fishing. In lake waters more than ½ mile distant from inlet or outlet streams, General Regulations and limits apply.
- **In all waters except those of lakes more than a ½-mile radius from inlet or outlet streams:**
 - Rainbow trout:
 - **June 8–October 31:** 1 per day, 1 in possession, no size limit.
 - **November 1–April 9:** 5 per day, 5 in possession, only 1 over 20 inches.

Lower Talarik Creek (including waters of Lake Iliamna within ½ mile of the Lower Talarik Creek mouth):

- **June 8–October 31:** Bait prohibited. Only unbaited artificial flies may be used.
- **June 8–October 31:** Rainbow trout may not be retained. All rainbow trout must be immediately released.

Upper Talarik Creek (including waters of Lake Iliamna within ½ mile of the Upper Talarik Creek mouth):

- **June 8–October 31:** Rainbow trout may not be retained. All rainbow trout must be immediately released.

Gibraltar River drainage (including all flowing waters and the waters of Lake Iliamna within ½ mile of the Gibraltar River mouth):

- **June 8–April 9:** Open to fishing.
- **June 8–October 31:** Bait prohibited. Only unbaited artificial flies may be used.
- **June 8–October 31:** Rainbow trout may not be retained. All rainbow trout must be immediately released.

Copper River drainage (including all flowing waters downstream from Lower Copper Lake and the waters of Lake Iliamna within ½ mile of the Copper River mouth):

- **June 8–April 9:** Open to fishing.
- **June 8–October 31:** Bait prohibited. Only unbaited artificial flies may be used.
- **June 8–October 31:** Rainbow trout may not be retained. All rainbow trout must be immediately released.

Tazimina River—from the falls, downstream to 1 mile upstream of its outlet into Sixmile Lake:

- **June 8–April 9:** Open to fishing.
- **June 8–October 31:** Rainbow trout may not be retained. All rainbow trout must be immediately released.

Sixmile Lake and Lake Clark:

- In all tributaries upstream of Sixmile Lake, including Lake Clark:
 - Open to fishing year-round.
 - Rainbow trout limits:
 - **June 8–October 31:** 1 per day, 1 in possession, no size limit.
 - **November 1–June 7:** 5 per day, 5 in possession, only 1 over 20 inches.

Iliamna River drainage:

- **June 8–April 9:** Open to fishing.
- Arctic char and Dolly Varden: No retention of Arctic char or Dolly Varden is allowed. All Arctic char or Dolly Varden must be released immediately.

Alagnak River drainage: (Unless further restricted below. See map on pg. 18):

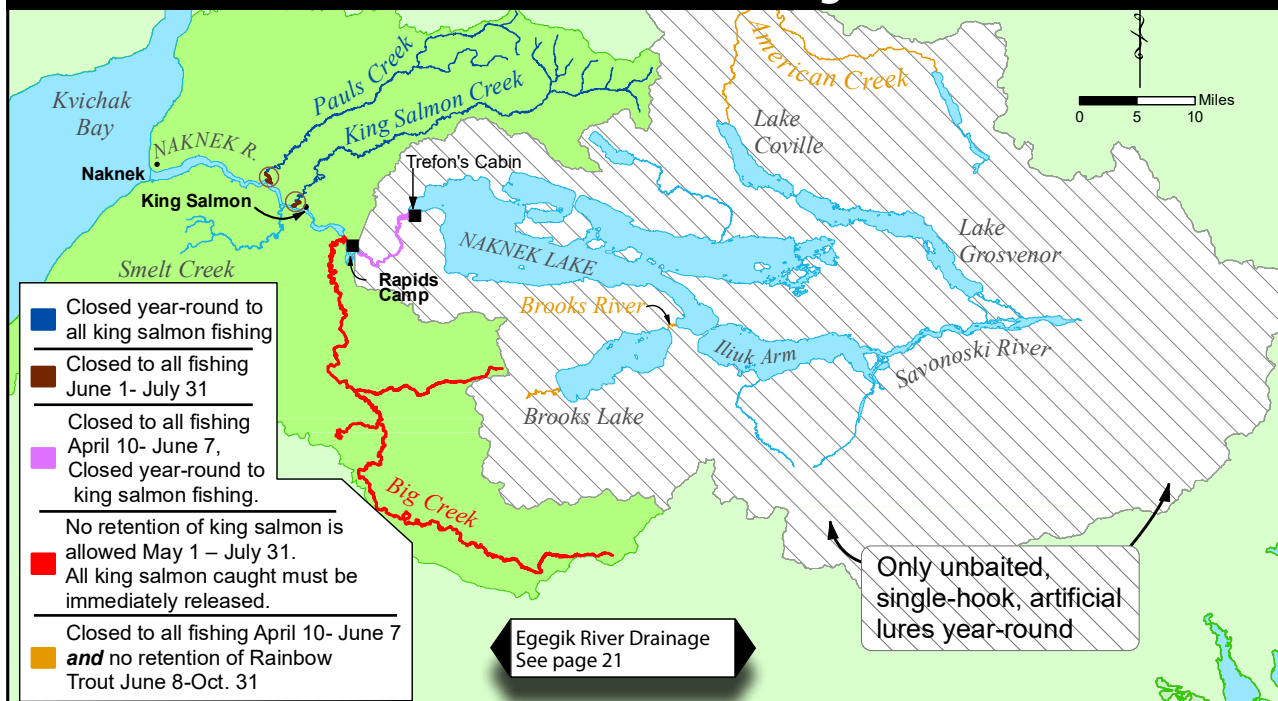
The use of helicopters for transporting anglers and sport-caught fish is prohibited.

- Salmon limits (all species except king): 5 per day, 5 in possession, only 3 per day, 3 in possession may be coho salmon. Limits for king salmon are the same as shown under General Seasons and Limits on page 13.
- Rainbow trout limits:
 - **June 8–October 31:** No retention of rainbow trout is allowed. All rainbow trout must be released immediately.
 - **November 1–April 9:** The daily limit is 5 per day, 5 in possession, must be less than 18 inches.
- **Alagnak River Drainage** (all flowing waters of the Alagnak River drainage, including lake waters within ½ mile of all inlet and outlet streams):
 - **June 8–April 9:** Open to fishing.
 - Only unbaited, single hook, artificial lures or flies may be used.

Moraine Creek drainage (all flowing waters):

- **June 8–April 9:** Open to fishing.
- **June 8–October 31:** Only unbaited, single hook, artificial flies may be used.

Naknek River Drainage



Special Regulations (continued)

Naknek River drainage:

- Open to fishing year-round.
- Rainbow trout limits:
 - **June 8–October 31:** Unless further restricted below, in the Naknek River drainage, 1 per day, 1 in possession, must be less than 18 inches.
 - **November 1–June 7:** 5 per day, 5 in possession, must be less than 18 inches.
- **In all flowing waters:**
 - **March 1–November 14:** Only unbaited, artificial lures or flies may be used.

- **In all flowing waters upstream from an ADF&G regulatory marker located ½ mile upstream of Rapids Camp, including all waters within ¼ mile of all lake inlet and outlet streams:**
 - Only unbaited, single hook, artificial lures or flies may be used year-round.
- **Upstream from ADF&G markers located ½ mile above Rapids Camp to ADF&G markers at Trefon's cabin at the outlet of Naknek Lake:**
 - **Closed year-round to fishing for king salmon.**
 - **June 8–April 9:** Open to fishing.
 - **March 1–April 9** and from **June 8–July 31:** Only unbaited, single hook, artificial lures or flies with a gap between the point and shank of ½ inch or less are allowed. For the remainder of the year, only unbaited, single hook, artificial lures or flies may be used.

Naknek River drainage continued...

- **Within a 1/4 mile radius of Big Creek:**
 - **May 1–July 31:** King salmon may be retained. Bag limits and gear restrictions are the same as the remainder of the Naknek River.

King Salmon Creek:

- Rainbow trout limits: 1 per day, 1 in possession, must be less than 18 inches.
- **Upstream from ADF&G markers at the confluence with the Naknek River, to the upstream side of the Alaska Peninsula Highway bridge:**
 - **August 1–May 31:** Open to fishing.
- **Upstream of the Alaska Peninsula Highway bridge:**
 - Open year-round to fishing for species other than king salmon.
 - **Closed year-round to all king salmon fishing.**

Paul's Creek:

- Rainbow trout limits: 1 per day, 1 in possession, must be less than 18 inches.
- **Upstream from ADF&G markers at confluence with the Naknek River to the upstream side of the Alaska Peninsula Highway bridge:**
 - **August 1–May 31:** Open to fishing.
- **Upstream of the Alaska Peninsula Highway bridge:**
 - Open year-round to fishing for species other than king salmon.
 - **Closed year-round to all king salmon fishing.**

Big Creek—upstream of its confluence with the Naknek River:

- Open year-round to fishing for species other than king salmon.
- **May 1–July 31:** King salmon may not be retained. All king salmon caught must be released immediately.

Brooks River drainage:

- Rainbow trout limits:
 - **June 8–October 31:** Unless further restricted below, all rainbow trout caught must be immediately released.
 - **November 1–June 7:** The bag and possession limit for rainbow trout is 5 fish less than 18 inches in length. Any rainbow trout caught that are 18 inches or greater in length must be immediately released.
- **In all flowing waters of the Brooks River drainage, including lake waters within ¼ mile of all inlet and outlet streams and waters of Naknek Lake within ¼ mile of the outlet of the Brooks River:**
 - **June 8–April 9:** Open to sport fishing.
 - Only unbaited, single hook, artificial flies may be used.
 - Rainbow trout limits: November 1–April 9: 5 per day, 5 in possession, must be less than 18 inches.
- **The outlet of Brooks Lake downstream to the bridge at Brooks Camp:**
 - Open to catch-and-release only. No retention of any species is allowed. All fish caught must be released immediately.

Brooks River and Brooks Camp are within Katmai National Park. Additional National Park regulations may apply to access and conduct of the fishery. Call (907) 246-3305 for information.

Savonoski River drainage (including the waters of Naknek Lake within ¼ mile of the mouth of the Savonoski River, and including Lake Coville and Lake Grosvenor, but excluding American Creek):

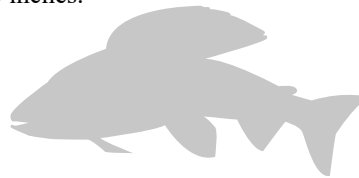
- Open to fishing year-round.
- Rainbow trout limits:
 - **June 8–October 31:** 1 per day, 1 in possession, no size limit.
 - **November 1–June 7:** 5 per day, 5 in possession, only 1 over 20 inches.

Egegik and Ugashik River Drainages



American Creek:

- **June 8–April 9:** Open to fishing.
- Rainbow trout limits:
 - **June 8–October 31:** No retention of rainbow trout is allowed. All rainbow trout must be released immediately.
 - **November 1–April 9:** 5 per day, 5 in possession, only 1 over 20 inches.



Egegik River drainage: (all waters, including Becharof Lake):

- Open to fishing year-round.
- Rainbow trout limits:
 - **June 8–October 31:** 1 per day, 1 in possession, no size limit.
 - **November 1–June 7:** 5 per day, 5 in possession, only one fish over 20 inches.
- **At Becharof Lake outlet, including the waters of Becharof Lake within ¼ mile of the outlet and the waters of the Egegik River within ¼ mile of the outlet:**
 - Arctic grayling: No retention. All Arctic grayling must be released immediately.

Ugashik River drainage - including Ugashik Lakes:

- Open to fishing year-round.
- Rainbow trout limits:
 - **June 8–October 31:** 1 per day, 1 in possession, no size limit.
 - **November 1–June 7:** 5 per day, 5 in possession, only one fish over 20 inches.
- **In Ugashik Narrows (the waters from the outlet of Upper Ugashik Lake downstream to the inlet of Lower Ugashik Lake, including those waters of Upper and Lower Ugashik Lakes within ¼ mile of the Ugashik Narrows):**
 - Arctic grayling: No retention. All Arctic grayling must be released immediately.
- **The Ugashik River:**
 - **Closed year-round to fishing for Arctic grayling.**
- **In the remainder of the Ugashik drainage, including Ugashik Lakes and all Ugashik tributaries:**
 - Arctic grayling: 2 per day, 2 in possession.