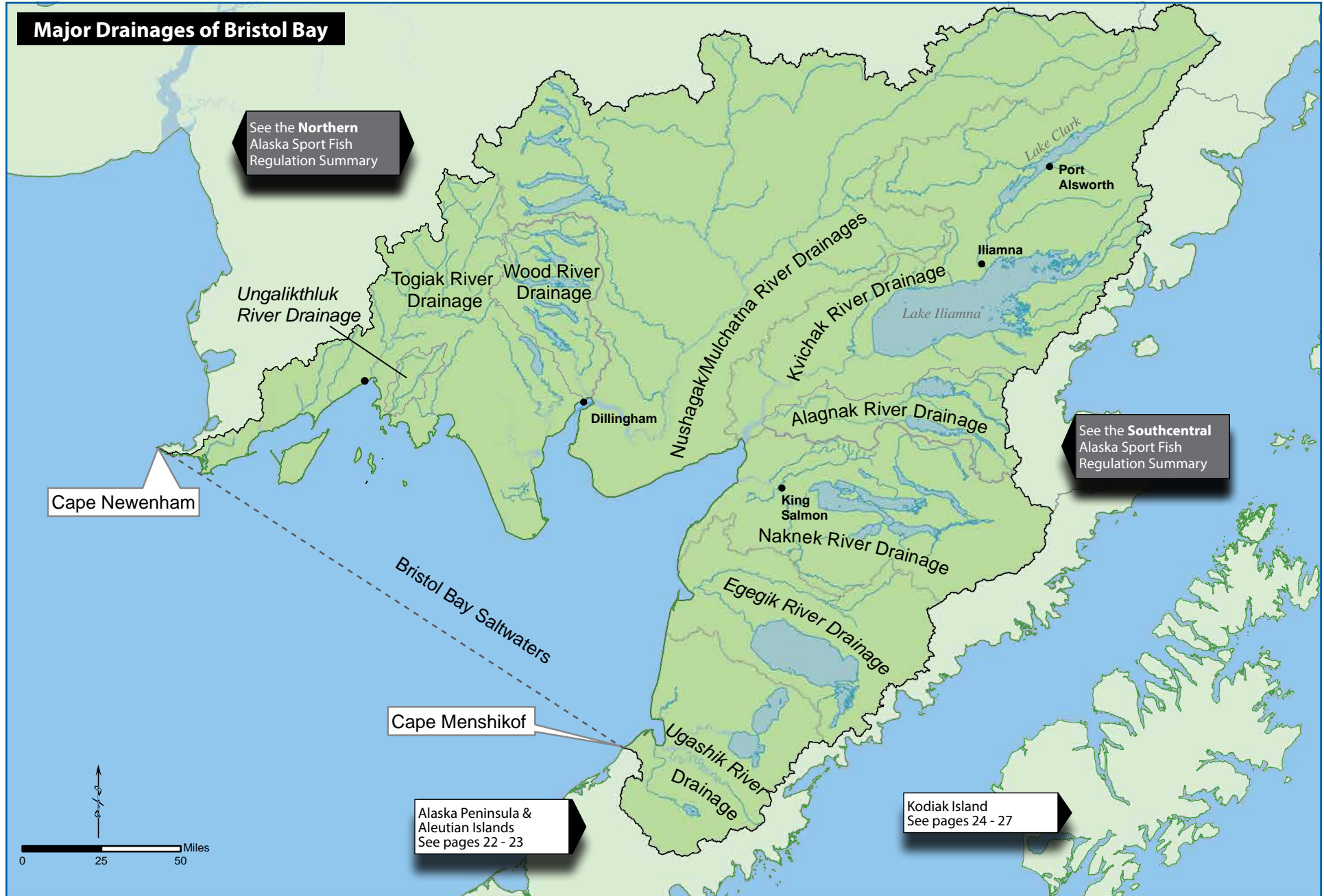


## Major Drainages of Bristol Bay



## GENERAL REGULATIONS

**Inclusive waters:** All fresh waters draining into Bristol Bay between Cape Menshikof and Cape Newenham, and all salt waters east of a line from Cape Newenham to Cape Menshikof.

**The fishing season for all species is open year-round unless otherwise noted below.**

### KING SALMON

- **Season:** May 1–July 31.
- 20 inches or longer— Annual limit of 5 king salmon 20 inches or longer in Bristol Bay salt and fresh waters. Of these 5 total king salmon, no more than 4 may be harvested from the Nushagak/Mulchatna river drainage, and no more than 2 may be harvested from the Wood River drainage. Harvest record required. See page 5 for recording instructions.
- **Fresh waters:**
  - **King salmon removed from the water must be retained:** Any king salmon removed from freshwater drainages of Bristol Bay from Cape Menshikof to Cape Newenham **MUST BE RETAINED** and becomes part of the bag limit of the person originally hooking it. A person who intends to release a king salmon may not remove it from the water before releasing it.
  - 20 inches or longer: 3 per day, 3 in possession, only 1 of which may be 28 inches or longer.
  - Less than 20 inches: 10 per day, 10 in possession.
- **Salt waters:**
  - 3 per day, 3 in possession, only 2 of which may be 28 inches or longer.

### OTHER SALMON

- 5 per day, 5 in possession.

### ARCTIC CHAR AND DOLLY VARDEN

- **Season:** June 8–October 31.
  - 3 per day, 3 in possession.
- **Season:** November 1–June 7.
  - 10 per day, 10 in possession.

### RAINBOW TROUT

- **Season:** June 8–October 31.
  - 2 per day, 2 in possession, only 1 of which may be 20 inches or longer.
- **Season:** November 1–June 7.
  - 5 per day, 5 in possession, only 1 of which may be 20 inches or longer.

### ARCTIC GRAYLING

- 2 per day, 2 in possession.

### LAKE TROUT

- 4 per day, 4 in possession.

### NORTHERN PIKE

- 5 per day, 5 in possession, only 1 of which may be 30 inches or longer.

### BURBOT

- 15 per day, 15 in possession.

### HALIBUT

Pacific halibut fisheries are managed by the federal government under international treaty. See page 7 for federal contact information.

- **Season:** February 1–December 31.
- **Unguided anglers:** 2 per day, 4 in possession.
- **Consult federal regulations for the following:**
  - 1) Bag, size, and possession limits for guided (charter) anglers.
  - 2) Possession and landing requirements.
  - 3) Inseason changes to the regulations.

### LINGCOD

- No limit.

### ROCKFISH

- No limit.

### KING CRAB

- **Season:** June 1–January 31.
  - Males only:
    - 6½ inches or more: 6 per day, 6 in possession.

### DUNGENESS CRAB

- Males only:
  - 6½ inches or more: 12 per day, 12 in possession.

### TANNER CRAB

- Males only:
  - 5½ inches or more: 12 per day, 12 in possession.

### SHARKS (EXCEPT SPINY DOGFISH)

- 1 per day, 1 in possession, no size restrictions.
- Annual limit of 2 sharks. Harvest record required. See page 5 for recording instructions.

### SPINY DOGFISH

- 5 per day, 5 in possession—no size restrictions. Harvest record **not** required.

### OTHER FINFISH

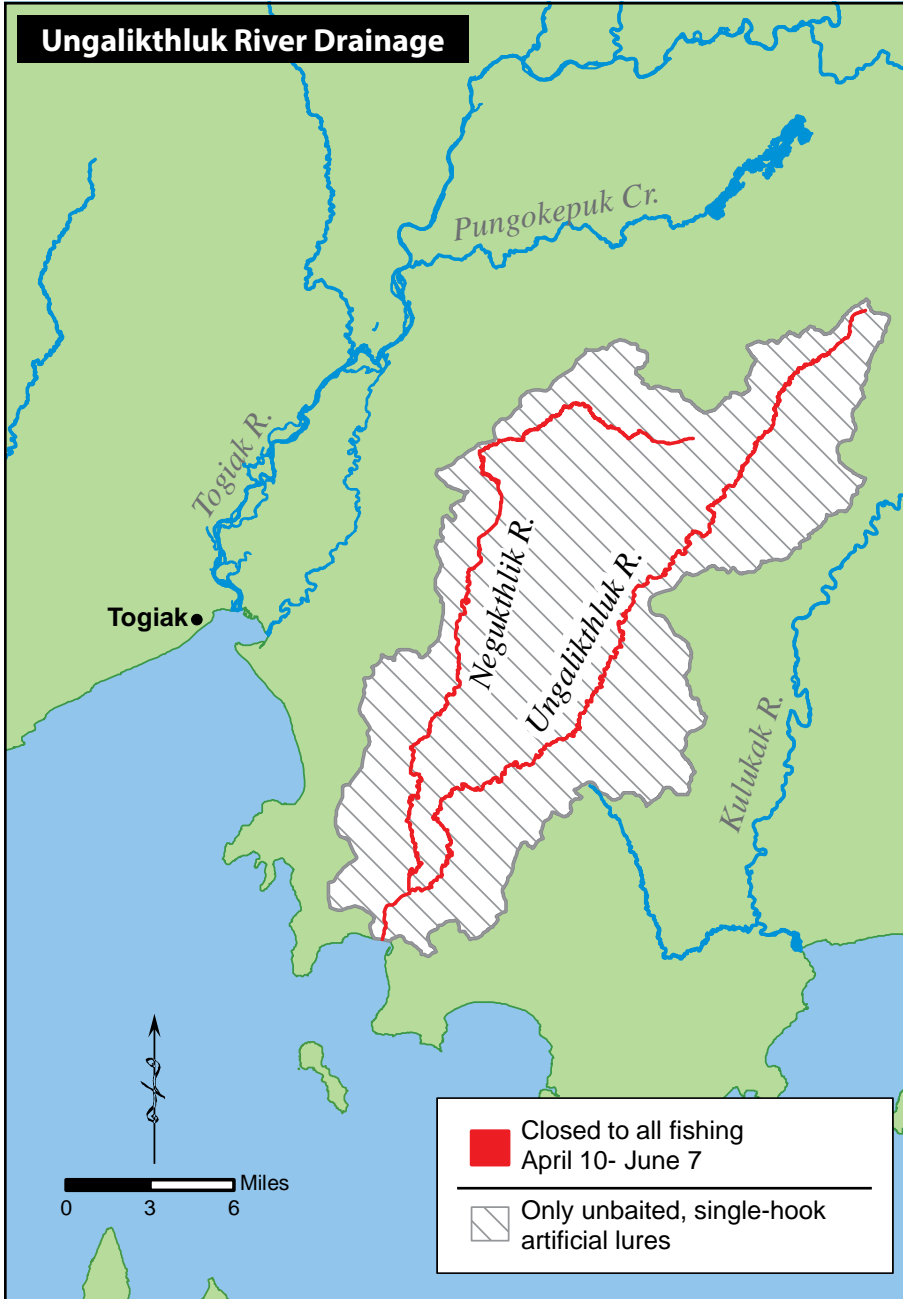
- No limit

## METHODS AND MEANS

### Chumming:

- In waters closed to the use of bait, sport fishing guides and guided anglers are prohibited from placing in the water any substance (bait) for the purpose of attracting fish by scent.





King salmon from the Nushagak

Photo by Doug Mulliner

**UNGALIKTHLUK RIVER DRAINAGE, INCLUDING THE NEGUKTHLIK RIVER**

- **Closed to all fishing, April 10-June 7.**
- Only unbaited, single-hook, artificial lures may be used.
- Rainbow trout limits:
  - June 8–Oct. 31: No retention of rainbow trout. All rainbow trout caught must be released immediately.
  - Nov. 1–April 9: 5 per day, 5 in possession, only 1 may be over 20 inches.

## WOOD RIVER DRAINAGE

### Wood River drainage:

- The fishing season for king salmon is May 1–July 31.
- King salmon limits:
  - Less than 20 inches: 10 per day, 10 in possession.
  - 20 inches or longer: 1 per day, 1 in possession, only 1 over 28 inches.
  - There is an annual limit of 2 king salmon over 20 inches taken from the Wood River drainage. All harvested king salmon 20 inches or longer must be recorded; see page 5.
- **Agulowak River** (from an ADF&G regulatory marker at the outlet of Lake Nerka, downstream to Lake Aleknagik, including waters of Lake Aleknagik within ½ mile of the Agulowak River outlet):
  - Only unbaited, single-hook, artificial lures may be used.
  - Rainbow trout limits: 1 per day, 1 in possession.
  - Arctic char/ Dolly Varden limits: 2 per day, 2 in possession.

- **Agulupak River** (From the outlet of Lake Beverly to the island located 1.2 miles downstream):
  - Sept. 1–June 7: Only unbaited, single-hook, artificial **LURES** may be used.
  - June 8–Aug. 31: Only unbaited, single-hook, artificial **FLIES** may be used.
  - Rainbow trout limits:
    - June 8–Oct. 31: No retention of rainbow trout. All rainbow trout caught must be released immediately.
    - Nov. 1–June 7: 5 per day, 5 in possession, only 1 may be over 20 inches.
- **Kulik Lake:**
  - Northern pike: No retention of northern pike 30 inches or longer.



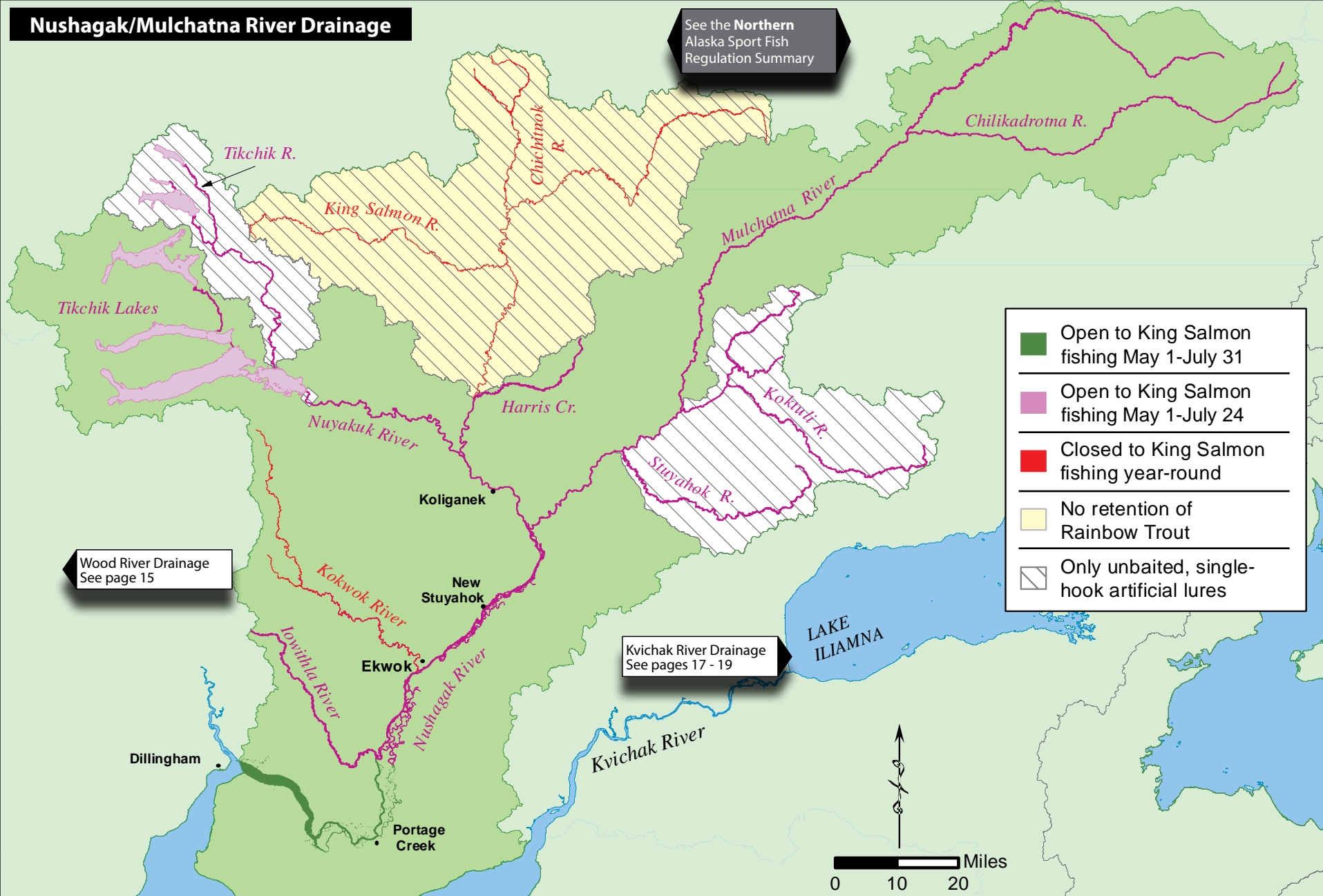
Wood River sunset

by Emily Tyson



## Nushagak/Mulchatna River Drainage

See the Northern Alaska Sport Fish Regulation Summary



- Open to King Salmon fishing May 1-July 31

---

- Open to King Salmon fishing May 1-July 24

---

- Closed to King Salmon fishing year-round

---

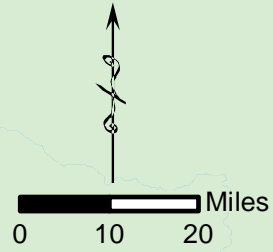
- No retention of Rainbow Trout

---

- Only unbaited, single-hook artificial lures

Wood River Drainage  
See page 15

Kvichak River Drainage  
See pages 17 - 19



## NUSHAGAK/MULCHATNA RIVER DRAINAGE

**The Nushagak/Mulchatna Chinook and Coho Salmon Management Plans may require inseason adjustments to the regulations (emergency orders) for seasons, bag limits, gear, and open waters, depending on escapement levels of king or coho salmon. See page 3 for instructions on how to check for emergency orders in the area you are fishing.**

- Only one single-hook lure or one single-hook may be used May 1–July 31.
- **In waters of the Nushagak/Mulchatna River drainage open to fishing for king salmon:**
  - King salmon limits:
    - 20 inches or longer:
      - 2 per day, 2 in possession, only 1 over 28 inches.
      - After taking a bag limit of king salmon 20 inches or longer from the Nushagak/Mulchatna River drainage, a person may only use unbaited artificial lures with *one single-hook*, in the Nushagak/Mulchatna River drainage for the remainder of the day.
      - There is an annual limit of 4 king salmon over 20 inches taken from the entire Nushagak/Mulchatna drainage.
      - All harvested king salmon 20 inches or longer must be recorded. See page 5 for recording instructions..
    - less than 20 inches: 5 per day 5 in possession
- **From its confluence with the Iowithla River, upstream to Harris Creek, including the Iowithla River:**
  - The fishing season for king salmon is May 1–July 24.
- **Upstream of its confluence with Harris Creek:**
  - **Closed to king salmon fishing year-round.**
  - Bait prohibited, only unbaited, single-hook, artificial lures may be used year-round.
  - Rainbow trout: Rainbow trout retention prohibited year-round. All rainbow trout caught must be released immediately.

**Kokwok River** (including waters of the Nushagak River within ¼ mile of its confluence with the Kokwok River):

- **Closed to king salmon fishing year-round.**

**Koktuli River drainage:**

- Only unbaited, single-hook, artificial lures may be used year-round.

**Mulchatna River drainage**—from ADF&G markers about 1½ miles downstream from the Stuyahok River outlet, upstream to markers about 1½ miles upstream from the Koktuli River outlet:

- Only unbaited, single-hook, artificial lures may be used year-round.

**Nuyakuk River**—from the outlet of Tikchik Lake to an island located about 2 miles downstream from Nuyakuk Falls:

- Only unbaited, single-hook, artificial lures may be used year-round.

**Stuyahok River Drainage:**

- Only unbaited, single-hook, artificial lures may be used year-round.

**Tikchik River Drainage:**

- Only unbaited, single-hook, artificial lures may be used year-round.



© Mark Emery

## KVICHAK RIVER DRAINAGE (see map on page 18)

**The Kvichak Inriver Sockeye Management Plan may require inseason changes to sockeye salmon bag limits and waters open to fishing, depending on escapement levels. See page 3 for instructions on how to check for emergency orders in the area you are fishing.**

- Salmon limits (except king salmon) excluding the Alagnak River drainage: 5 per day, 5 in possession; only 2 per day, 2 in possession may be coho salmon.
- Use of helicopters for transporting anglers and sport-caught fish is prohibited in the Kvichak River drainage.
- **Chulitna River Drainage, including waters of Lake Clark within 1 mile of the Chulitna River:**
  - Northern pike: No retention of northern pike 30 inches or longer is allowed. All northern pike 30 inches or longer must be immediately released.
- **Kvichak River upstream from its outlet in Kvichak Bay to Iliamna Lake:**
  - **Closed to all sport fishing April 10–June 7.**
  - Only unbaited, single-hook, artificial lures may be used year-round, except in lake waters more than a ½-mile radius from inlet or outlet streams.
- **Kvichak River from Kvichak Bay upstream to an ADF&G marker at the confluence of Yellow Creek:**
  - Rainbow trout limits:
    - June 8–Oct. 31: 1 per day, 1 in possession, no size limit.
    - Nov. 1–April 9: 5 per day, 5 in possession, only 1 over 20 inches.

- No retention of Rainbow Trout  
June 8-October 31

---

- No retention of Rainbow Trout  
June 8-September 30

---

- No retention of Arctic Char or  
Dolly Varden year-round

---

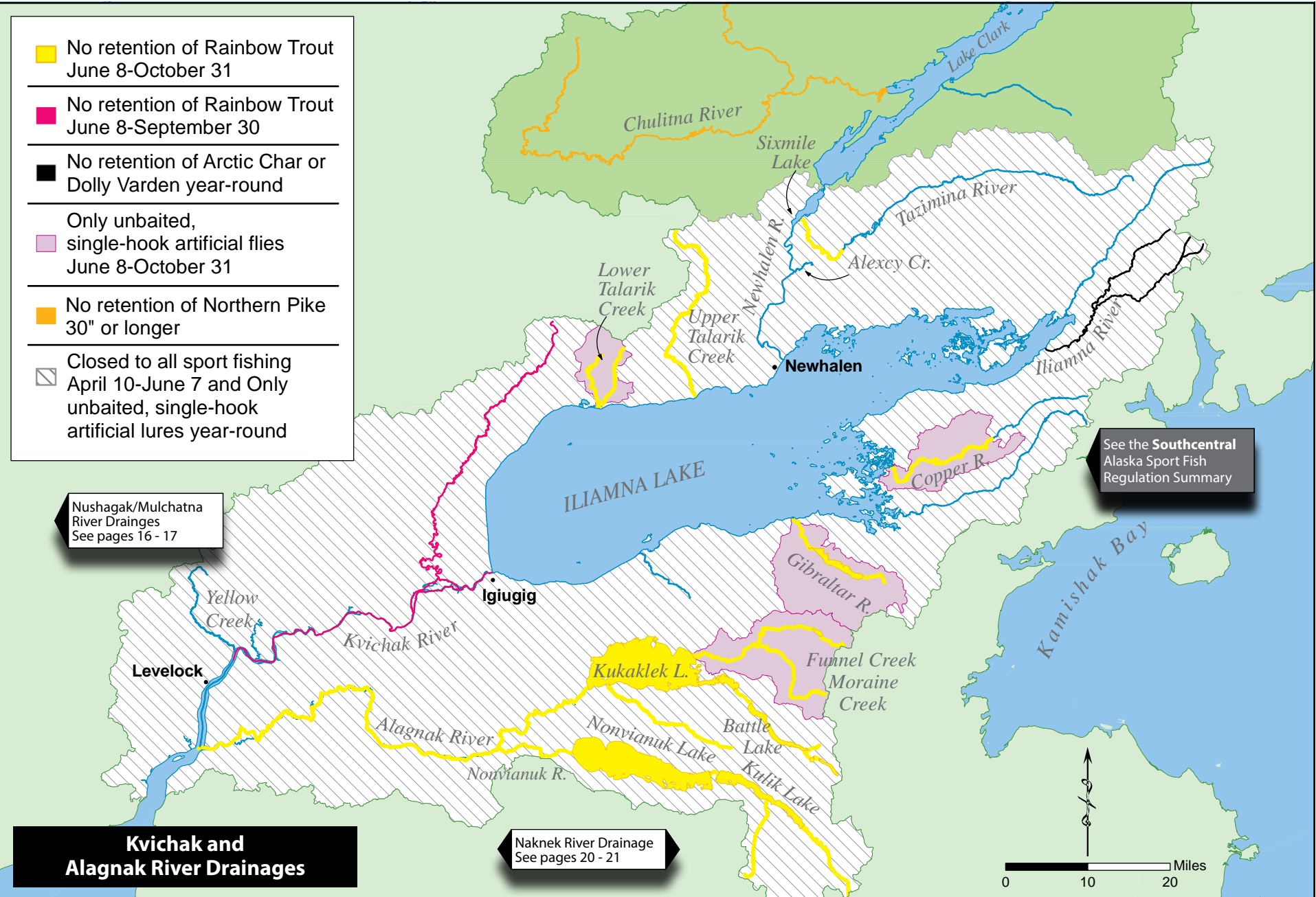
- Only unbaited,  
single-hook artificial flies  
June 8-October 31

---

- No retention of Northern Pike  
30" or longer

---

- Closed to all sport fishing  
April 10-June 7 and Only  
unbaited, single-hook  
artificial lures year-round

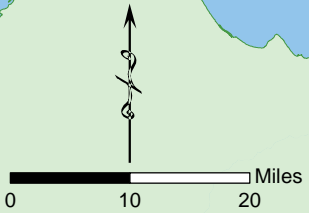


See the **Southcentral** Alaska Sport Fish Regulation Summary

Nushagak/Mulchatna River Drainages  
See pages 16 - 17

**Kvichak and Alagnak River Drainages**

Naknek River Drainage  
See pages 20 - 21



## KVICHAK RIVER DRAINAGE (continued)

- **From an ADF&G regulatory marker at the confluence of Yellow Creek upstream to the waters of Iliamna Lake within a ½-mile radius of its outlet at Igiugig:**
  - Rainbow trout limits:
    - June 8–Sept. 30: No retention of rainbow trout is allowed. All rainbow trout must be immediately released.
    - Oct. 1–Oct. 31: 1 per day, 1 in possession, no size limit.
    - Nov. 1–April 9: 5 per day, 5 in possession, only 1 over 20 inches.
- **Iliamna Lake and all its tributaries, including the Newhalen River and tributaries, upstream to the outlet of Lake Clark:**
  - Only unbaited, single-hook, artificial lures may be used year-round, except in waters of lakes more than a ½-mile radius from inlet or outlet streams.
  - **All flowing waters, and lake waters within a ½-mile radius of inlet or outlet streams:**
    - **Closed to all sport fishing April 10–June 7.** In lake waters more than ½ mile distant from inlet or outlet streams, general seasons and limits at left apply.
  - **In all waters except those of lakes more than a ½-mile radius from inlet or outlet streams:**
    - Rainbow trout limits:
      - June 8–Oct. 31: 1 per day, 1 in possession, no size limit.
      - Nov. 1–April 9: 5 per day, 5 in possession, only 1 over 20 inches.



- **Lower Talarik Creek and waters of Lake Iliamna**—within ½ mile of the Lower Talarik Creek mouth:
  - June 8–October 31: Bait prohibited, only unbaited artificial flies may be used.
  - Rainbow trout: June 8–Oct. 31: No retention of rainbow trout is allowed. All rainbow trout must be immediately released.
- **Upper Talarik Creek and waters of Lake Iliamna**—within ½ mile of the Upper Talarik Creek mouth:
  - Rainbow trout limits: June 8–Oct. 31: No retention of rainbow trout is allowed. All rainbow trout must be immediately released.
- **Gibraltar River drainage**—all flowing waters and the waters of Lake Iliamna within ½ mile of the Gibraltar River mouth:
  - June 8–October 31: Bait prohibited, only unbaited artificial flies may be used.
  - Rainbow trout limits: June 8–Oct. 31: No retention of rainbow trout is allowed. All rainbow trout must be immediately released.
- **Copper River drainage**—all flowing waters downstream from Lower Copper Lake and the waters of Lake Iliamna within ½ mile of the Copper River mouth:
  - June 8–October 31: Bait prohibited, only unbaited artificial flies may be used.
  - Rainbow trout limits: June 8–Oct. 31: No retention of rainbow trout is allowed. All rainbow trout must be immediately released.
- **Tazimina River**—from the falls, downstream to 1 mile upstream of its outlet into Sixmile Lake:
  - Rainbow trout limits: June 8–Oct. 31: No retention of rainbow trout is allowed. All rainbow trout must be immediately released.
- **Iliamna River drainage:**
  - Arctic char and Dolly Varden limits: No retention of Arctic char or Dolly Varden is allowed. All Arctic char or Dolly Varden must be released.

## Kvichak River drainage upstream of Sixmile Lake, including Lake Clark:

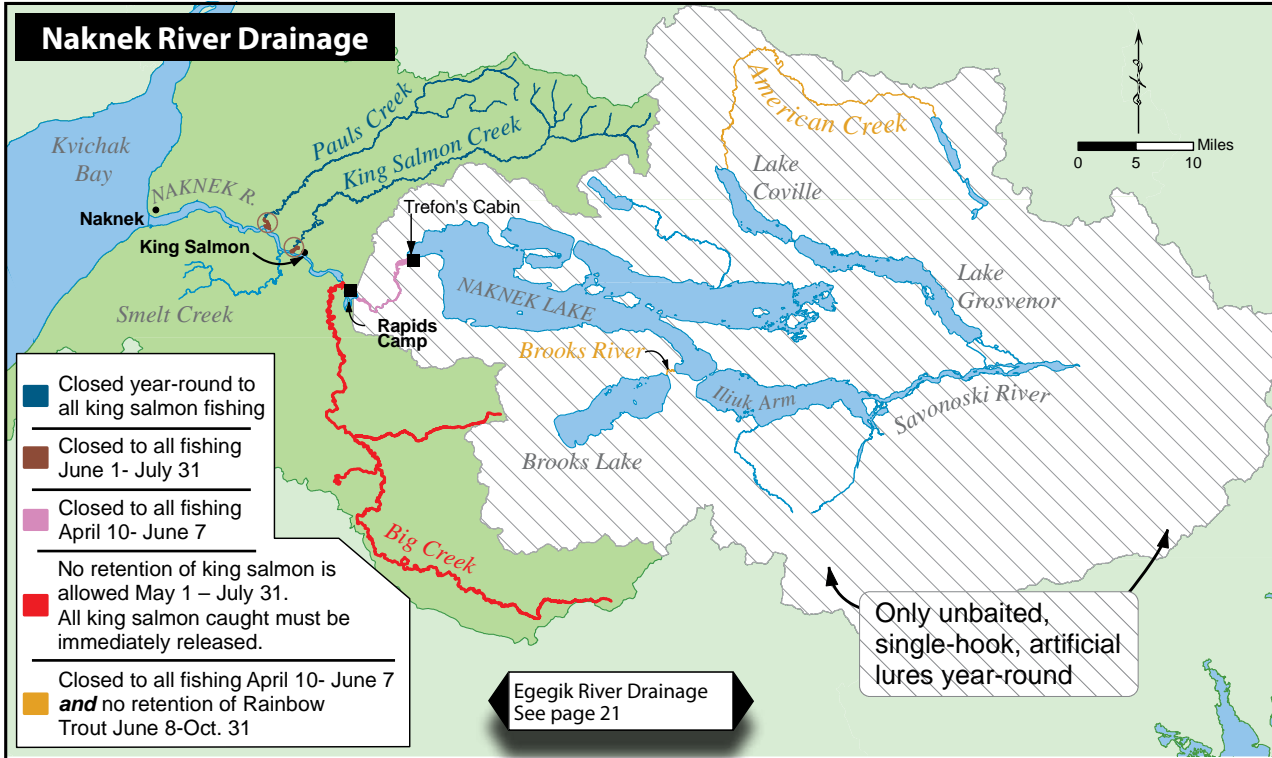
- In all tributaries upstream of Sixmile Lake, including Lake Clark:
  - Rainbow trout limits:
    - June 8–Oct. 31: 1 per day, 1 in possession, no size limit.
    - Nov. 1–June 7: 5 per day, 5 in possession, only 1 over 20 inches.

## ALAGNAK RIVER DRAINAGE

### Alagnak River drainage; unless further restricted below (see map on page 18):

- The use of helicopters for transporting anglers and sport-caught fish is prohibited.
- Salmon limits (all species except king): 5 per day, 5 in possession, only 3 per day, 3 in possession may be coho salmon. Limits for king salmon are the same as shown under General Seasons and Limits on page 16.
- Rainbow trout limits:
  - June 8–Oct. 31: No retention of rainbow trout is allowed. All rainbow trout must be immediately released.
  - Nov. 1–June 7, the daily limit is 5 per day, 5 in possession, must be less than 18 inches.
- **Alagnak River drainage**—all flowing waters of the Alagnak River drainage, including lake waters within ½ mile of all inlet and outlet streams:
  - **Closed to all sport fishing April 10–June 7.**
  - Only unbaited, single-hook, artificial lures may be used year-round.
- **Moraine Creek drainage**—all flowing waters:
  - June 8–October 31: Only unbaited, single-hook, artificial flies may be used.





## NAKNEK RIVER DRAINAGE

### Naknek River drainage:

- Rainbow trout limits:
  - June 8–Oct. 31: Unless further restricted below, in the Naknek River drainage, 1 per day, 1 in possession, must be less than 18 inches.
  - Nov. 1–June 7: 5 per day, 5 in possession, must be less than 18 inches.
- **In all flowing waters:**
  - March 1–November 14: Only unbaited, artificial lures may be used.



- **In all flowing waters upstream from an ADF&G regulatory marker located 1/2 mile upstream of Rapids Camp, including all waters within 1/4 mile of all lake inlet and outlet streams:**
  - Only unbaited, single-hook, artificial lures may be used year-round.
- **Upstream from ADF&G markers located 1/2 mile above Rapids Camp to ADF&G markers at Trefon's cabin at the outlet of Naknek Lake:**
  - **Closed to all sport fishing April 10–June 7.**
  - Only unbaited, single-hook, artificial lures with a gap between the point and shank of 1/2 inch or less are allowed March 1–April 9 and from June 8–July 31. For the remainder of the year, only unbaited, single-hook, artificial lures may be used.

- **Within a 1/4 mile radius of Big Creek:**
  - King salmon: May 1–July 31: king salmon may be retained. Bag limits and gear restrictions same as the remainder of the Naknek River.

### Big Creek—upstream of its confluence with the Naknek River:

- King salmon: May 1–July 31: No retention of king salmon is allowed. All king salmon caught must be immediately released.

### Brooks River drainage:

**Brooks River and Brooks Camp are within Katmai National Park. Additional National Park regulations may apply to access and conduct of the fishery. Call (907) 246-3305 for information.**

- Rainbow trout limits:
  - June 8–Oct. 31: Unless further restricted below, all rainbow trout caught must be immediately released.
  - November 1–June 7: The bag and possession limit for rainbow trout is 5 fish less than 18 inches in length. Any rainbow trout caught that are 18 inches or greater in length must be immediately released.
- **In all flowing waters of the Brooks River drainage, including lake waters within 1/4 mile of all inlet and outlet streams and waters of Naknek Lake within 1/4 mile of the outlet of the Brooks River:**
  - **Closed to all sport fishing April 10–June 7.**
  - Only unbaited, single-hook, artificial flies may be used.
  - Rainbow trout limits: November 1–April 9: 5 per day, 5 in possession, must be less than 18 inches.
- **The outlet of Brooks Lake downstream to the bridge at Brooks Camp:**
  - No retention; all fish caught must be released immediately.



## NAKNEK RIVER DRAINAGE (continued)

### King Salmon Creek:

- Rainbow trout limits: 1 per day, 1 in possession, must be less than 18 inches.
- **Upstream from ADF&G markers at confluence with the Naknek River to the upstream side of the Alaska Peninsula Highway bridge:**
  - **Closed to all sport fishing June 1–July 31.**
- **Upstream of the Alaska Peninsula Highway bridge:**
  - **Closed year-round to all king salmon fishing.**

### Paul's Creek:

- Rainbow trout limits: 1 per day, 1 in possession, must be less than 18 inches.
- **Upstream from ADF&G markers at confluence with the Naknek River to the upstream side of the Alaska Peninsula Highway bridge:**
  - **Closed to all sport fishing June 1–July 31.**
- **Upstream of the Alaska Peninsula Highway bridge:**
  - **Closed year-round to all king salmon fishing.**

**Savonoski River drainage** (including the waters of Naknek Lake within ¼ mile of the mouth of the Savonoski River, and including Lake Coville and Lake Grosvenor (but excluding American Creek):

- Rainbow trout limits:
  - June 8–Oct. 31: 1 per day, 1 in possession, no size limit.
  - November 1–June 7: 5 per day, 5 in possession, only 1 over 20 inches.
- **American Creek:**
  - **Closed to all sport fishing April 10–June 7.**
- Rainbow trout limits:
  - June 8–Oct. 31: No retention of rainbow trout is allowed. All rainbow trout must be released immediately.
  - Nov. 1–April 9: 5 per day, 5 in possession, only 1 over 20 inches.



**Egegik and Ugashik River Drainages**

## EGEGIK RIVER DRAINAGE

- **All waters, including Becharof Lake:**
  - Rainbow trout limits:
    - June 8–October 31: 1 per day, 1 in possession, no size limit.
    - Nov. 1–June 7: 5 per day, 5 in possession, only one fish over 20 inches.
- **At Becharof Lake outlet, including the waters of Becharof Lake within ¼ mile of the outlet and the waters of the Egegik River within ¼ mile of the outlet:**
  - Arctic grayling limits: No retention of Arctic grayling is allowed. All Arctic grayling must be released immediately.

## UGASHIK RIVER DRAINAGE

### Ugashik River drainage:

- **All waters, including Ugashik Lakes:**
  - Rainbow trout limits:
    - June 8–October 31: 1 per day, 1 in possession, no size limit.
    - Nov. 1–June 7: 5 per day, 5 in possession, only one fish over 20 inches.
- **In Ugashik Narrows (the waters from the outlet of Upper Ugashik Lake downstream to the inlet of Lower Ugashik Lake, including those waters of Upper and Lower Ugashik Lakes within ¼ mile of the Ugashik Narrows):**
  - Arctic grayling limits: No retention of Arctic grayling is allowed. All Arctic grayling must be released immediately.
- **The Ugashik River:**
  - **Closed year-round to fishing for Arctic grayling.**
- **In the remainder of the Ugashik drainage, including Ugashik Lakes and all Ugashik tributaries:**
  - Arctic grayling limits: 2 per day, 2 in possession.



Rainbow trout