



FISH HABITAT PERMIT

FH16-III-0182-GP AMENDMENT 2

ISSUED: September 9, 2024
EXPIRES: December 31, 2025

GENERAL PUBLIC

RE: **Motorized Vehicle Stream Crossing at Traditional Ford Locations
Seward Peninsula**

Access From Nome-Teller Highway

Map 1

Imuruk Basin/Tuksuk Channel Drainage

Bluestone River (Right Fork) (Stream No. 332-00-10320-2100)

Near Skookum Creek, Sec 34, T4S, R37W, KRM, Teller A-3

Crossing Coordinate (WGS84): 65.1005 N, -166.2524 W

Gold Run Creek (Stream No. 332-00-10320-2101)

At McDame Creek and Alder Creek (Sullivan Camp)

Sec 8, T5S, R37W

Crossing Coordinates (WGS84): 65.0668 N, -166.2010 W

65.0642 N, -166.1970 W

Tisuk River Drainage

McAdam Creek (Stream No. 333-00-10320-2101)

Sec 4, T6S, R37W, KRM, Nome D-3

Crossing Coordinate (WGS84): 64.9914 N, -166.1740 W

Eldorado Creek (Stream No. 333-10-10378-2060)

Sec 20, T6S, R37W

Crossing Coordinate (WGS84): 64.9590 N, -166.2024 W

Map 2

Sinuk River (Stream No. 333-10-10700)

Near Mouth Above Mean Low Tide

Sec 27, T10S, R38W, KRM, Nome C-3

Crossing Coordinate (WGS84): 64.5896 N, -166.2498 W

Cripple Creek Drainage

Cripple Creek (Stream No. 333-10-10900)

Near Mouth Above Mean Low Tide

Sec 12-13, T11S, R36W, KRM, Nome C-2

Crossing Coordinates (WGS84): 64.5399 N, -165.8024 W

64.5422 N, -165.7899 W

Along Nome-Teller Highway Access Trail

Unnamed Tributary (Stream No. 333-10-10900-2004) and
Bowhead Creek (Stream No. 333-10-10900-2008)

Both at Confluence with Cripple Creek, Sec 12, T11S, R36W

Crossing Coordinates (WGS84): 64.5464 N, -165.7760 W
64.5560 N, -165.7772 W

Arctic Creek (Stream No. 333-10-10900-2018)

Near Confluence with Cripple Creek, Sec 23, T10S, R36W

Crossing Coordinate (WGS84): 64.6040 N, -165.8187 W

Upstream from Cripple Creek, Sec 7-8, T10S, R35W

Crossing Coordinates (WGS84): 64.6326 N, -165.7488 W
64.6360 N, -165.7412 W
64.6392 N, -165.7297 W

Unnamed Tributaries (Stream No. 333-10-10900-2022 and 2026)

Upstream of Arctic Creek, Sec 22 and 15, T10S, R36W

Crossing Coordinates (WGS84): 64.6110 N, -165.8414 W
64.6171 N, -165.8605 W

Stella Creek (Stream No. 333-10-10900-2040)

Sec 2, T10S, R36W

Crossing Coordinate (WGS84): 64.6550 N, -165.8344 W

Cleveland Creek (Stream No. 333-10-10900-2050)

Sec 31, T9S, R35W

Crossing Coordinate (WGS84): 64.6672 N, -165.7618 W

Penny River (Stream No. 333-10-10950)

Near Mouth Above Mean Low Tide

Sec 18, T11S, R35W

Crossing Coordinate (WGS84): 64.5378 N, -165.7405 W

Access From Snake River Road

Map 3

Snake River Drainage (Stream No. 333-10-11200)

Monument Creek (Stream No. 333-10-11200-2107)

~1 mile from Snake River, Sec 29, T10S, R34W, KRM, Nome C-2

Crossing Coordinate (WGS84): 64.5975 N, -165.5078 W

Glacier Creek (Stream No. 333-10-11200-2110)

Multiple Crossings along access road

Sec 26-27, T10S, R34W, KRM, Nome C-1

Crossing Coordinate Range (WGS84): 64.5975 N, -165.4610 W To
64.5972 N, -165.4080 W

Snake River between Glacier and Rock Creeks, Sec 27, T10S, R34W

Crossing Coordinates (WGS84): 64.5990 N, -165.4656 W

Boulder Creek (Stream No. 333-10-11200-2133) and

Twin Mountain Creek (Stream No. 333-10-11200-2133-3024)

At confluence of both creeks and downstream along Boulder Creek

Sec 5 and 9, T10S, R34W

Crossing Coordinate (WGS84): 64.6508 N, -165.5128 W
64.6475 N, -165.5075 W
64.6404 N, -165.4929 W

Snake River at Bangor Creek, Sec 34, T9S, R34W
Crossing Coordinates (WGS84): 64.6706 N, -165.4358 W

Maps 4 & 4a

Divining Creek (Stream No. 333-10-11200-2138)
Sec 35, T9S, R34W
Crossing Coordinate (WGS84): 64.6588 N, -165.4266 W

Borg Creek (Stream No. 333-10-11200-2150)
Sec 25, T9S, R34W
Crossing Coordinate (WGS84): 64.6588 N, -165.4266 W

Grub Gulch (Stream No. 333-10-11200-2160-3010)
Sec 12, T9S, R34W
Crossing Coordinate (WGS84): 64.7225 N, -165.3916 W

Grouse Creek (Stream No. 333-10-11200-2160-3014)
Sec 12, T9S, R34W
Crossing Coordinate (WGS84): 64.6764 N, -165.3949 W

Steep Creek (Stream No. 333-10-11200-2160-3028-4010)
Sec 32, T8S, R33W
Crossing Coordinate (WGS84): 64.7470 N, -165.3982 W

Silver Creek (Stream No. 333-10-11200-2160-3028)
Sec 32, T8S, R33W
Crossing Coordinate (WGS84): 64.7473 N, -165.3985 W

Goldbottom Creek (Stream No. 333-10-11200-2160)
Sec 25, T8S, R34W, KRM, Nome C-1, D-1
Crossing Coordinate (WGS84): 64.7696 N, -165.4535 W

Access From Nome-Taylor Highway

Map 3

Nome River Drainage

Nome River (Stream No. 333-10-11250)
Above Osborn Creek, Sec 11, T11S, R33W, KRM, Nome C-1
Crossing Coordinate (WGS84): 64.5499 N, -165.2167 W

Confluence of Buster Creek, Sec 27, T11S, R33W
Crossing Coordinate (WGS84): 64.5870 N, -165.2674 W
Buster Creek (Stream No. 333-10-11250-2068)

Sec 27, T10S, R33W
Crossing Coordinates (WGS84): 64.5920 N, -165.2494 W
64.5996 N, -165.2458 W

Map 4

Nome River

Below Sampson Creek, Sec 9, T9S, R33W, Nome C-1
Crossing Coordinate (WGS84): 64.7191 N, -165.2952 W
At **Hobson Creek** (Stream No. 333-10-11250-2097)

Sec 4, T9S, R33W
Crossing Coordinates (WGS84): 64.7307 N, -165.2792 W
64.7314 N, -165.2699 W

At Clara Creek, Sec 30, T8S, R32W, Nome D-1
Crossing Coordinate (WGS84): 64.7696 N, -165.2216 W

At Dorothy Creek, Sec 6, T8S, R32W
Crossing Coordinate (WGS84): 64.8244 N, -165.2321 W
At Divide Creek, Sec 36, T7S, R33W
Crossing Coordinate (WGS84): 64.8390 N, -165.2658 W

*****New – above Divide C 64.8552/ 165.2688 Sec 25**

Map 5

Pilgrim River Drainage

Pilgrim River (Stream No. 332-00-10250-2110)

Between Big and Homestake Creeks, Sec 22, T6S, R30W, KRM, Solomon D-6

Crossing Coordinate (WGS84): 64.9593 N, -164.7211 W, and

Upstream of Iron Creek, Sec 13

Crossing Coordinate (WGS84): 64.9690 N, -164.6572 W

Iron Creek (Stream No. 332-00-10250-2110-3500)

Sec 13, T6S, R30W

Crossing Coordinates (WGS84): 64.9722 N, -164.6448 W, and
64.9618 N, -164.6440 W

At Babs and Eagle Creeks, Sec 35

Crossing Coordinate (WGS84): 64.9208 N, -164.6907 W

Near Rabbit and Dome Creeks, Sec 10-11, T7S

Crossing Coordinate (WGS84): 64.9003 N, -164.7088 W

Map 6

Kougarok River Drainage

Kougarok River (Stream No. 332-00-10250-2285)

Near Ryan Gulch and Kougarok Landing Strip

Sec 16, T1S, R29W, KRM, Bendeleben B-6

Crossing Coordinate (WGS84): 65.4065 N, -164.6424 W, and

At Niagara Creek, Sec 9

Crossing Coordinate (WGS84): 65.4199 N, -164.6440 W

Near Windy and Neva Creeks, Sec 28, T1N, R29W

Crossing Coordinate (WGS84): 65.4614 N, -164.6948 W

Map 7

North Fork Kougarok River (Stream No. 332-00-10250-2285-3048)

Near Mouth, Sec 8, T2N, R29W, KRM, Bendeleben C-6

Crossing Coordinates (WGS84): 65.5844 N, -164.7280 W, and

Crossing Coordinates (WGS84): 65.5836 N, -164.7330 W

Taylor Highway Low-Water Crossing, Sec 9

Crossing Coordinate (WGS84): 65.5936 N, -164.7012 W, and

Near Harris Creek, Sec 1

Crossing Coordinate (WGS84): 65.6055 N, -164.6012 W, and

Crossing Coordinate (WGS84): 65.6088 N, -164.5905 W

Kougarok River Upstream of North Fork

Coarse Gold Creek (Stream No. 332-00-10250-2285-3047)

Near Mouth and Kougarok at Confluence, Sec 7, T2N, R29W

Crossing Coordinate (WGS84): 65.5940 N, -164.7628 W, and

Crossing Coordinate (WGS84): 65.5948 N, -164.7680 W
Henry Creek (Stream No. 332-00-10250-2285-3053)
At Mouth, Sec 13 and 24, T3N, R30W
Crossing Coordinate (WGS84): 65.6536 N, -164.8100 W

Kougarok River - Multiple Crossings Through Placer Mines
From Terminus of the Nome-Taylor Highway
From Sec 12, T3N, R30W
Crossing Coordinate (WGS84): 65.6750 N, -164.7989 W
Up **Washington Creek** (Stream No. 332-00-10250-2285-3335)
To Sec 20, T4N, R30W
Crossing Coordinate (WGS84): 65.7326 N, -164.9580 W

Schlitz Creek (Stream No. 331-00-10880-2068)
Trail to Serpentine Hot Springs, Sec 34, T5N, R29W, Bendeleben D-6
Crossing Coordinate (WGS84): 65.7878 N, -164.7488 W

Access From Nome-Council Road

Map 8

Solomon River Drainage

Solomon River (Stream No. 333-10-11700)
At Lees Camp, Sec 13, T10S, R29W, KRM, Solomon C-5
Crossing Coordinate (WGS84): 64.6204 N, -164.3952 W
Shovel Creek (Stream No. 333-10-11700-2061)
Multiple Crossings from Sec 12 to 2, T10S, R29W
Crossing Coordinates (WGS84): 64.6338 N, -164.3966 W To
64.6560 N, -164.4252 W

Solomon River

Sec 6, T10S, R28W
Crossing Coordinate (WGS84): 64.6464 N, -164.3404 W
Big Hurrah Creek (Stream No. 333-10-11700-2082)
Sec 5, T10S, R28W
Crossing Coordinates (WGS84): 64.6548 N, -164.3156 W
64.6522 N, -164.3090 W

Maps 8 & 9

Upper Solomon River

Multiple Crossings Along the Casadepaga Access Road
From Sec 21 to 5, T9S, R28W
Crossing Coordinates (WGS84): 64.6959 N, -164.2845 W To
64.7353 N, -164.3252 W

Map 9

Niukluk River Drainage

Casadepaga River (Stream No. 333-20-10670-2281-3301)
At Casadepaga, Sec 16, T8S, R28W, KRM, Solomon D-5
Crossing Coordinate (WGS84): 64.7960 N, -164.3534 W
At Lower Willow Creek, Sec 9, T8S, R28W
Crossing Coordinate (WGS84): 64.8120 N, -164.3458 W

At Thrope and Dixon Creeks, Sec 18, T7S, R27W
Crossing Coordinate (WGS84): 64.8880 N, -164.2114 W

Map 10

Ophir Creek (Stream No. 333-20-10670-2281-3160)
Near Mouth, Sec 33, T6S, R25W, KRM, Solomon D-4
Crossing Coordinate (WGS84): 64.9184 N, -163.7437 W
Sweetcake Creek (Stream No. 333-20-10670-2281-3160-4011)
Near Mouth, Sec 33, T6S, R25W
Crossing Coordinate (WGS84): 64.9284 N, -163.7332 W

Ophir Creek

Near Snowball Creek, Sec 13, T6S, R25W
Crossing Coordinate (WGS84): 64.9752 N, -163.6520 W
Crooked Creek (Stream No. 333-20-10670-2281-3160-4083)
Near Confluence with Ophir Creek, Sec 35, T5S, R25W, Bendeleben A-4
Crossing Coordinate (WGS84): 65.0163 N, -163.6696 W
Niukluk River (Stream No. 333-20-10670-2281)
At Council, Sec 11, T7S, R25W, Solomon D-4
Crossing Coordinate (WGS84): 64.8930 N, -163.6808 W
Melsing Creek (Stream No. 333-20-10670-2281-3110)
Multiple Crossings, Sec 11 and 1
Crossing Coordinates (WGS84): 64.8948 N, -163.6640 W
64.9036 N, -163.6522 W
64.9058 N, -163.6492 W

Pursuant to AS 16.05.871(b), the Alaska Department of Fish and Game (ADF&G), Habitat Section, has determined that both the public interest and protection of fish and game will continue to be served with the issuance of this General Fish Habitat Permit Amendment authorizing the use of motorized vehicles to cross the described waterbodies. Wheeled or tracked vehicles with a **gross vehicle weight (GVWR) of 10,000 pounds or less** are authorized to cross within a 500-foot centerline of the referenced traditional ford crossing sites.

Note 1: Any use of larger vehicles/equipment, or other use (water withdrawal, etc.) within the described waterbodies, or any use within other natural water bodies catalogued as anadromous not described herein requires an individual Fish Habitat Permit.

Note 2: Do not use the crossing coordinates for navigation.

Note 3: For more information about the RS2477 ROW trail system depicted by the black dashed lines visit the following Alaska Department of Natural Resources website: [RS 2477 Project \(alaska.gov\)](http://alaska.gov) ; http://dnr.alaska.gov/mlw/trails/rs2477/rst_srch.cfm ; and <http://dnr.alaska.gov/mapper/>

Anadromous Fish Act

The described water bodies have been specified as being important for the spawning, rearing, or migration of anadromous fishes pursuant to AS 16.05.871(a). The water bodies provide habitat for a combination of salmon species and life stages, whitefish, and/or anadromous Dolly Varden, and the entire system supports resident species of fish such as Arctic grayling. Your project as proposed should not have adverse effects on anadromous fish or their habitat and should not obstruct the free passage of fish.

In accordance with AS 16.05.871(d), authorization is hereby given to cross the described waterbodies using the described limited vehicles subject to the following stipulations:

- 1) Summer stream crossings with vehicles shall be made from bank to bank in a direction substantially perpendicular to the direction of stream flow to the extent practicable and in a manner that precludes creation of barriers to efficient fish passage (ridging and/or rutting of streambed, etc.). No modifications to the banks of the stream are authorized via this permit.
- 2) Winter stream crossings shall occur when and where the ice is naturally frozen to the streambed or in areas where ice thickness is adequate to support equipment. Vehicles shall not enter open water during winter. Any ice/snow bridges and approach ramps constructed at stream crossings of any definable stream must be substantially free of extraneous material (i.e., soil, rock, wood, or vegetation). Any ice/snow bridge shall be breached and fill used for ramps shall be removed upon completion of use to facilitate breakup such that fish passage is maintained.

Permit Terms

This letter constitutes a permit issued under the authority of AS 16.05.871. Please be advised that this determination applies only to activities regulated by the Habitat Section of ADF&G; other agencies also may have jurisdiction under their respective authorities. This determination does not relieve you of your responsibility to secure other permits; state, federal, or local. You are still required to comply with all other applicable laws.

You are responsible for the actions of contractors, agents, or other persons who perform work to accomplish the approved project. For any activity that significantly deviates from the approved plan, you shall notify the ADF&G Habitat Section and obtain written approval in the form of a permit amendment before beginning the activity. Any action that increases the project's overall scope or that negates, alters, or minimizes the intent or effectiveness of any provision contained in this permit will be deemed a significant deviation from the approved plan. The final determination as to the significance of any deviation and the need for a permit amendment is the responsibility of the ADF&G Habitat Section. Therefore, it is recommended that you consult the Habitat Section before considering any deviation from the approved plan.

You shall give an authorized representative of the state free and unobstructed access to the permit site, at safe and reasonable times, for the purpose of inspecting or monitoring compliance with any provision of this permit. You shall furnish whatever assistance and information the authorized representative reasonably requires for monitoring and inspection purposes.

In addition to the penalties provided by law, this permit may be terminated or revoked for failure to comply with its provisions or failure to comply with applicable statutes and regulations. You shall mitigate any adverse effect upon fish or wildlife, their habitats, or any restriction or interference with public use that the commissioner determines was a direct result of your failure to comply with this permit or any applicable law.

You shall indemnify, save harmless, and defend the department, its agents, and its employees from any and all claims, actions, or liabilities for injuries or damages sustained by any person or property arising directly or indirectly from permitted activities or your performance under this permit. However, this provision has no effect if, and only if, the sole proximate cause of the injury is the department's negligence.

You may appeal this permit decision relating to AS 16.05.871 in accordance with the provisions of AS 44.62.330-630.

Please direct questions about this permit to Habitat Biologist Todd Nichols at 907-459-7363 or todd.nichols@alaska.gov.

Sincerely,
Doug Vincent-Lang, Commissioner

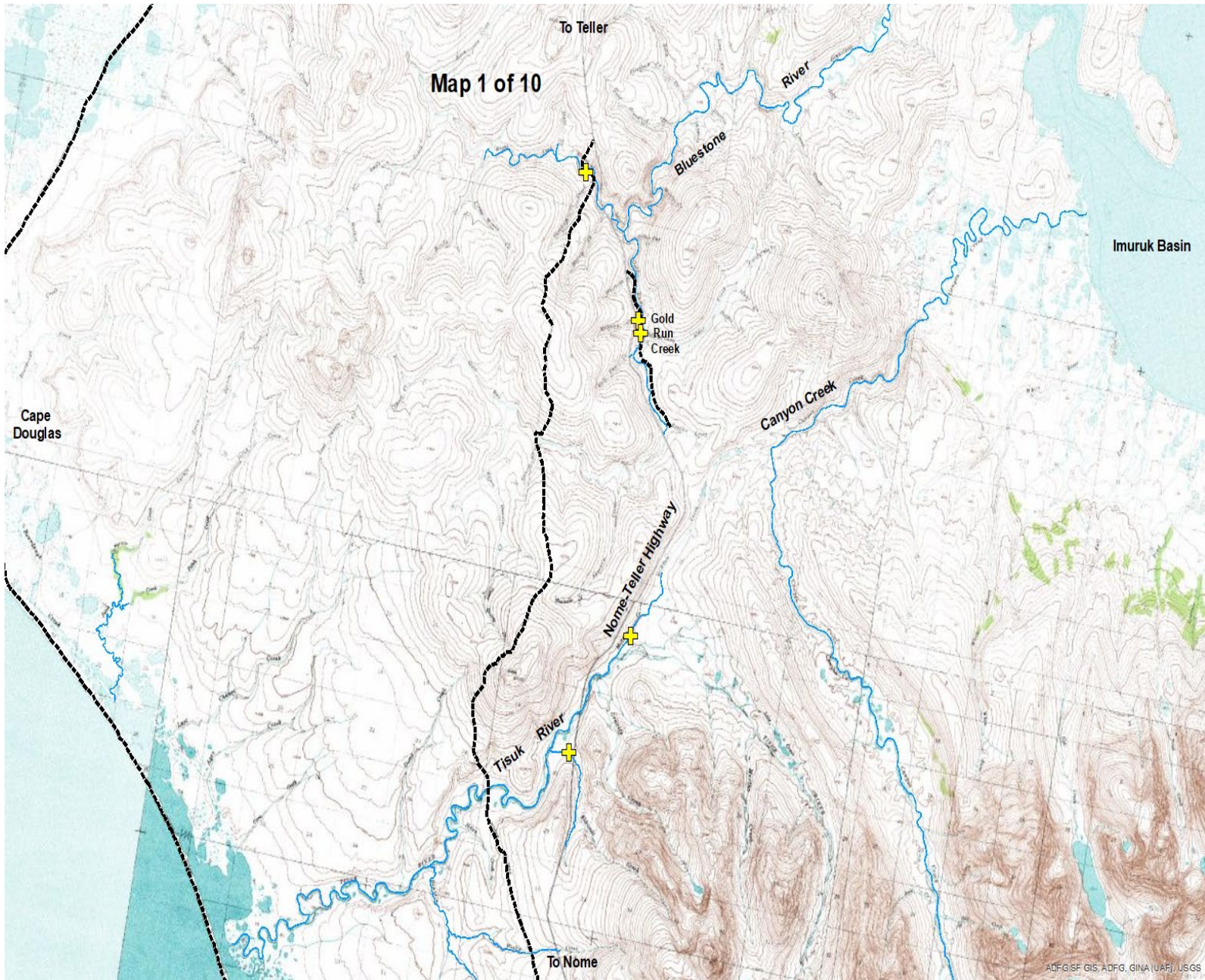


BY: Audra L. J. Brase, Regional Supervisor
Habitat Section
Alaska Department of Fish and Game

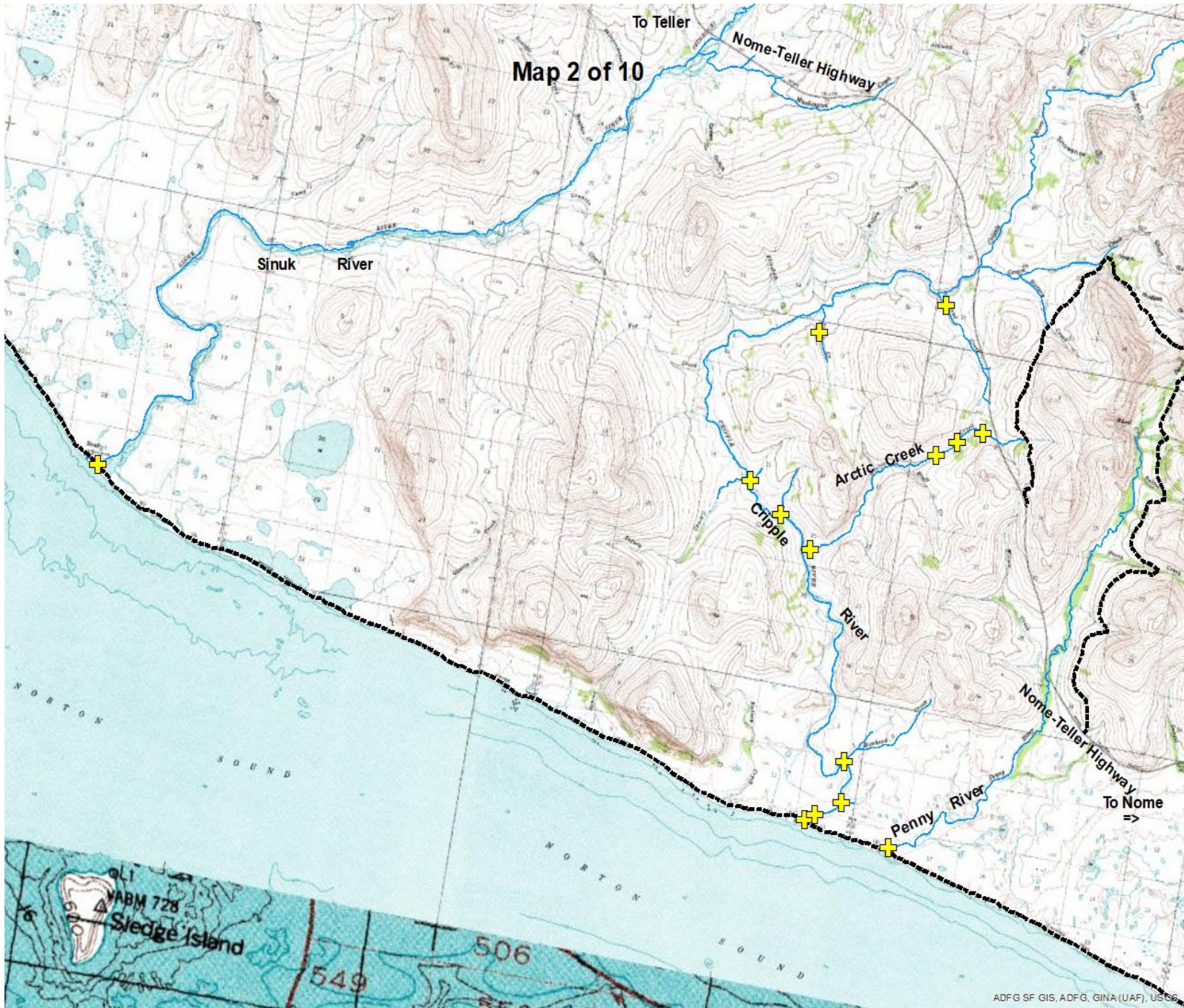
ecc: Brendan Scanlon, ADF&G SF, Fairbanks
Kevin Clark, ADF&G CF, Nome
Sara Henslee, ADF&G WC, Nome
AJ Michels, ADNRM LW, Fairbanks
USFWS, Fairbanks
NOAA Fisheries, HCD, Anchorage
AWT, Northern Detachment, Fairbanks
Permit Coordinator, ADF&G SF
Al Ott, ADF&G HAB, Fairbanks

tn/AB

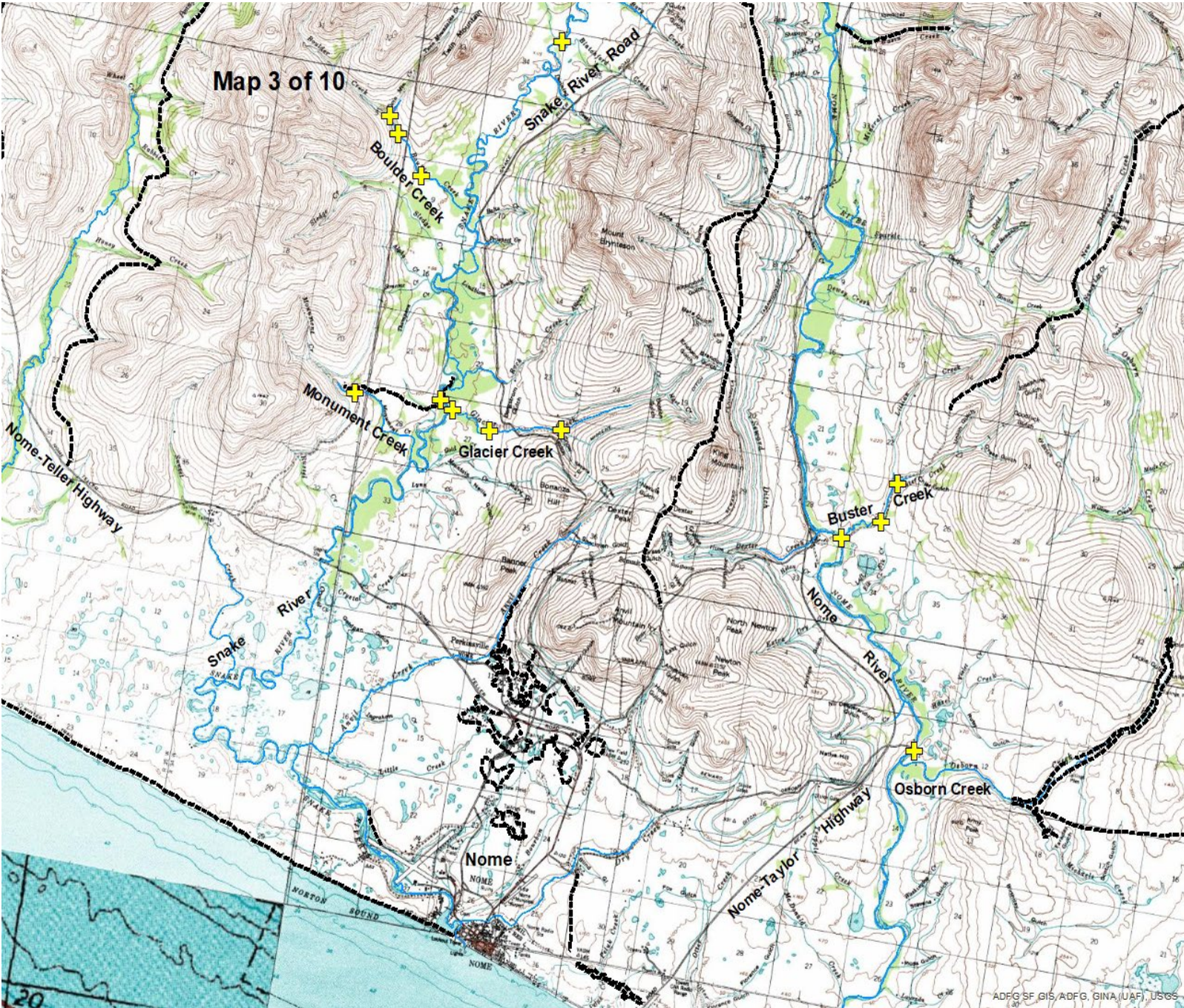
Map 1 of 10



Map 2 of 10



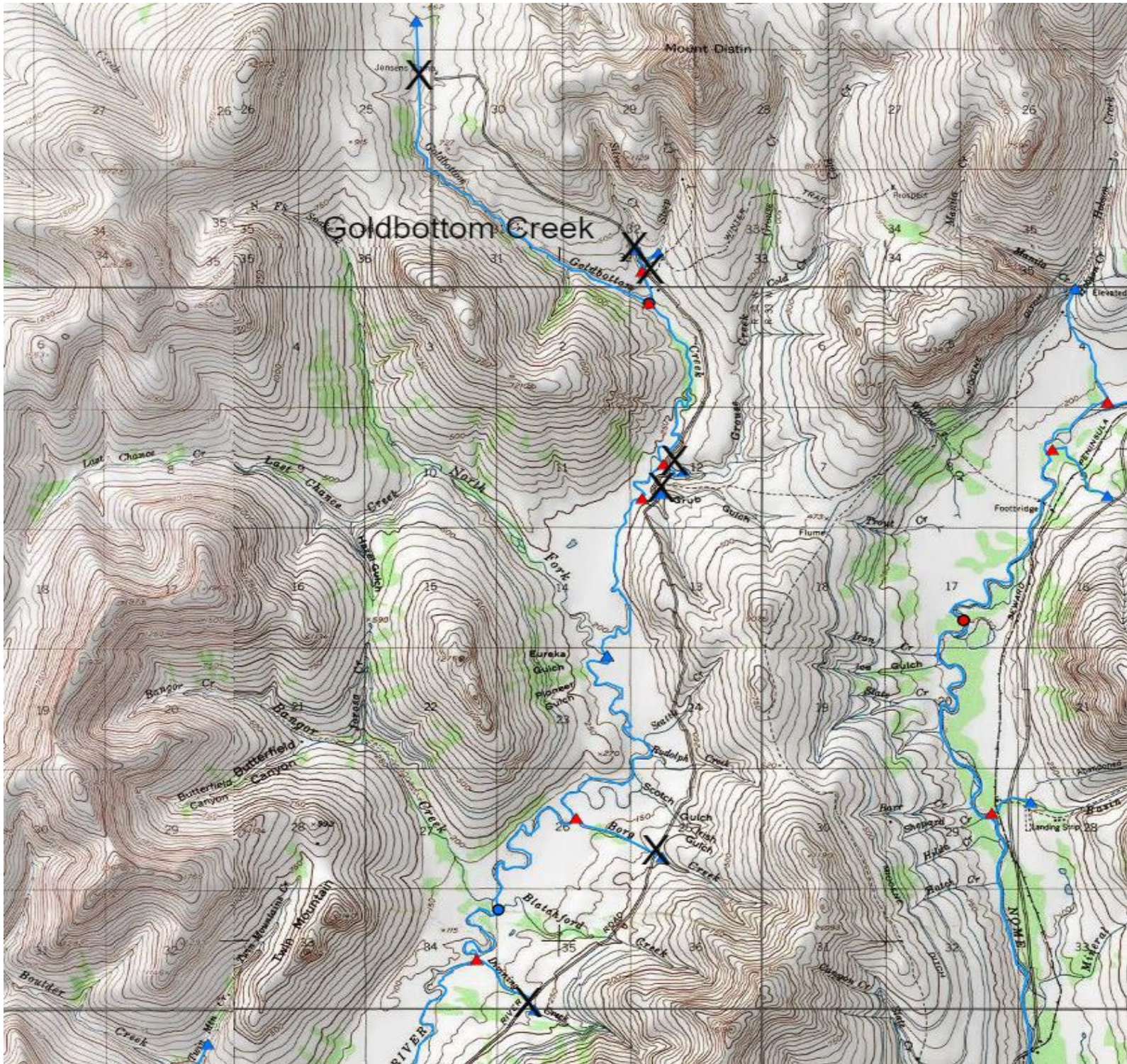
Map 3 of 10



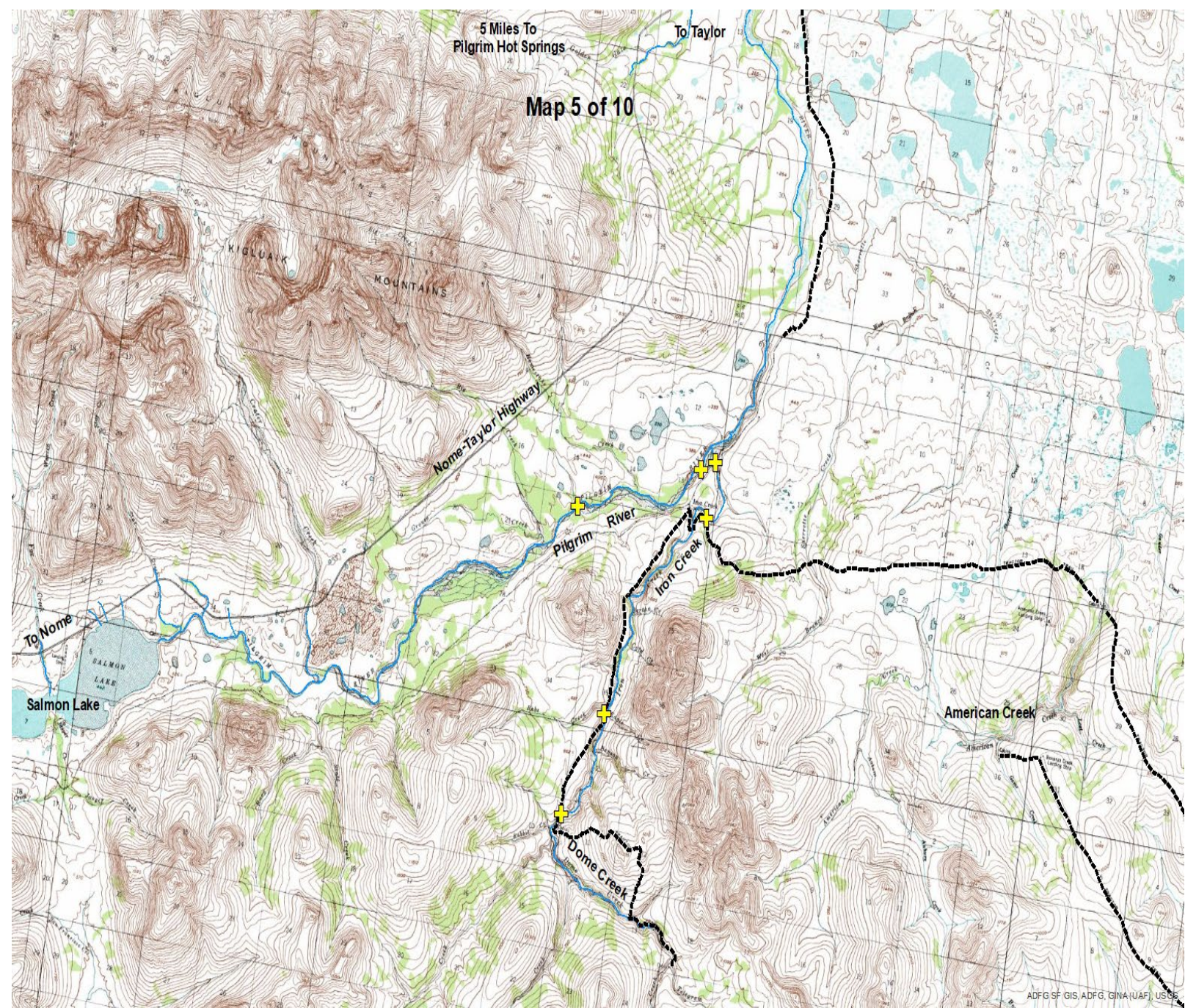
Map 4 of 10



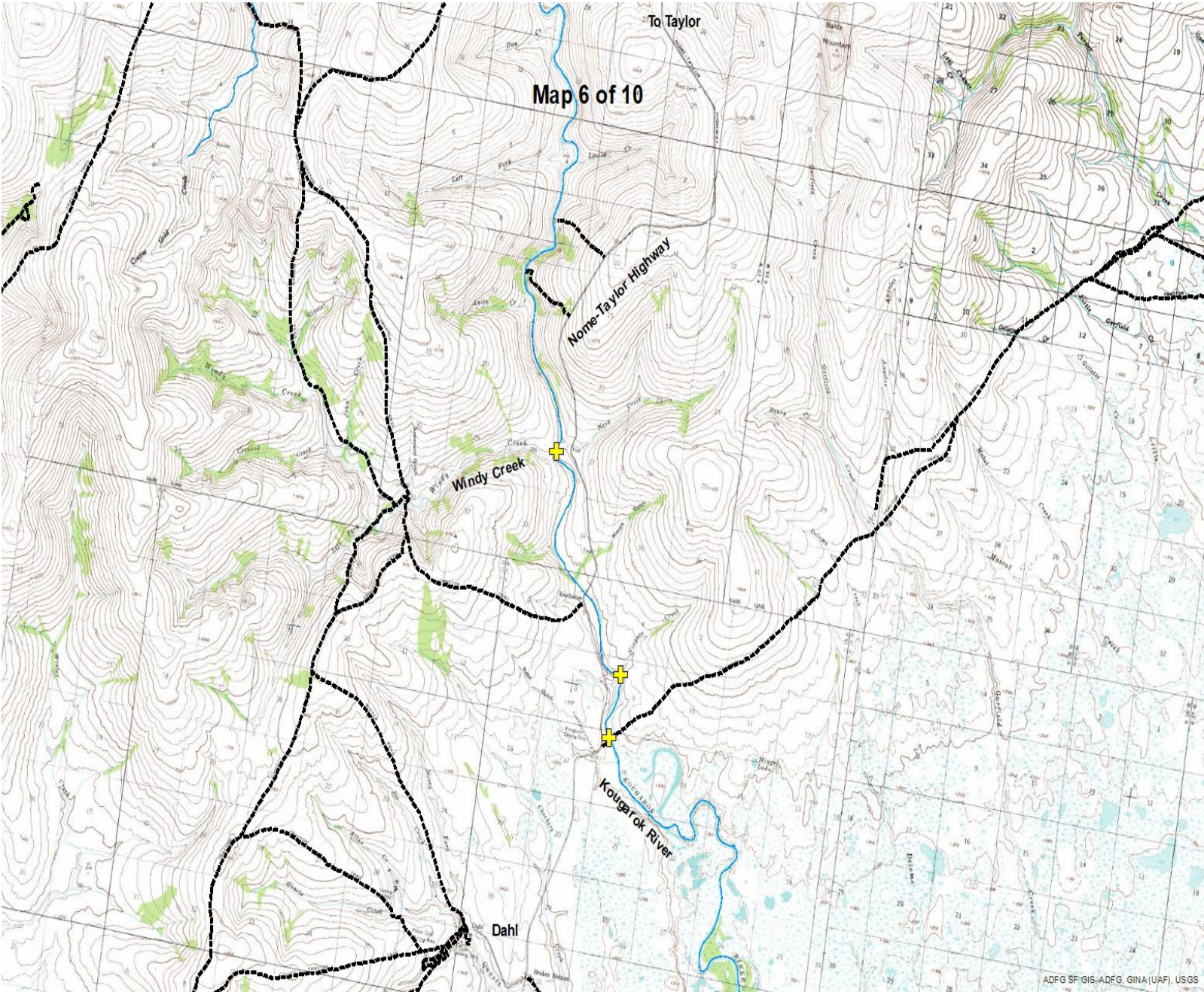
Map 4a (Upper Snake River Road Amended)



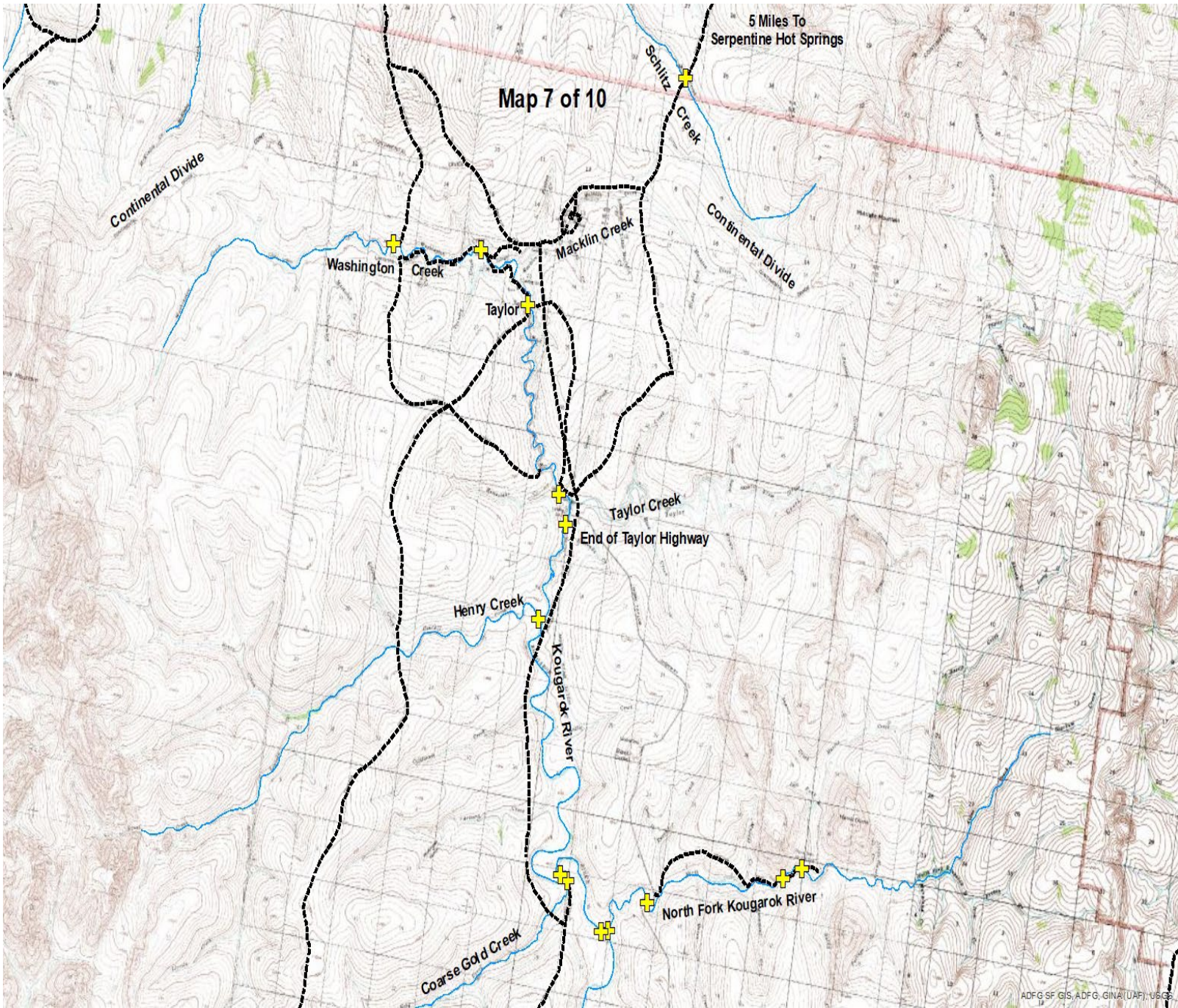
Map 5 of 10



Map 6 of 10



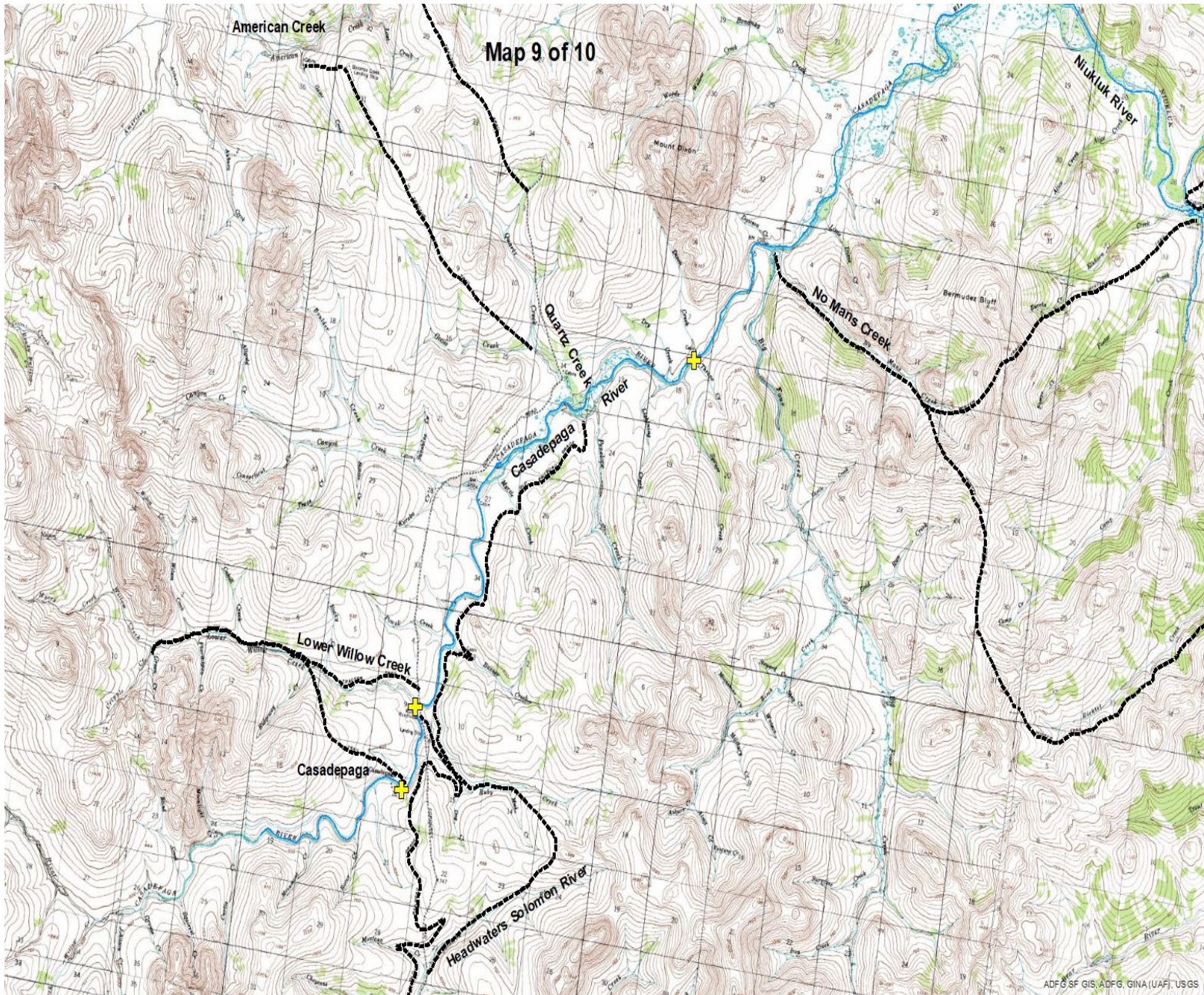
Map 7 of 10



Map 8 of 10



Map 9 of 10



Map 10 of 10

