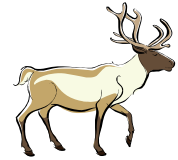




## ALASKA DEPARTMENT OF FISH AND GAME

### *Copper Basin CARIBOU Community Subsistence Harvest Permit PROGRAM 2018-2019*



## HUNT ADMINISTRATION

Community Subsistence Harvest (CSH) Hunt administration will be in accordance with the Alaska Department of Fish and Game's (ADF&G) statutory and regulatory authority, including managing this common use resource for sustained yield while adhering to laws regarding the subsistence preference passed by the Alaska State Legislature.

## COPPER BASIN CARIBOU CSH PERMIT

According to regulations found in 5 AAC 92.072 *Community Subsistence Harvest Hunt Area and Permit Conditions* and 5 AAC 92.052 *Discretionary Permit Hunt Conditions and Procedures*, ADF&G may issue community-based subsistence harvest permits for big game species where the Alaska Board of Game (board) has established a community harvest hunt area. The board established the Gulkana, Cantwell, Chistochina, Gakona, Mentasta, Tazlina, Chitina, and Kluti-Kaah (Copper Center) Community Harvest Area for moose and caribou in 2009 (5 AAC 92.074(d) *Community Subsistence Harvest Areas*), hereafter referred to as the Copper Basin CSH area.

The CSH permit program allows communities or groups of 25 or more to apply for a Copper Basin CSH permit to participate in the Copper Basin CSH hunt for two consecutive years. Once established, all group members must comply with all CSH hunting requirements for the two-year commitment period and group membership cannot be changed until the permit expires. The Copper Basin Caribou CSH permit expires at the end of the second regulatory year for which it is valid. Renewal of a Copper Basin CSH permit at the end of the two-year commitment period is the responsibility of the community or group coordinator.

A group can choose to apply for a Copper Basin caribou CSH permit, a Copper Basin moose CSH permit, or both. A community or group may possess only one Copper Basin Caribou CSH permit at any given time and group members may subscribe to only one Copper Basin Caribou CSH group at a time.

These groups may select, from their group members, individual harvesters who may possess a particular expertise in hunting to harvest wildlife resources on behalf of the community or group.

The hunt conditions in this Copper Basin Caribou CSH permit program are made for the purposes of notifying the community/group of users of how to use caribou in a manner consistent with the customary and traditional use pattern described in the board's 2006 findings *Game Management Unit 13 Caribou and Moose Subsistence Uses (2006-170-BOG)*, as well as to ensure an orderly administration of the CSH permit program and hunt (CC001).

## **APPLICATION PROCESS DURING THE FIRST YEAR**

### **THE COMMUNITY OR GROUP COORDINATOR**

In addition to permit hunt conditions and procedures found in 5 AAC 92.050 and 5 AAC 92.072, the community or group applying for a Copper Basin Caribou CSH permit must designate a coordinator as part of the application process. The coordinator certifies that the information presented in a Copper Basin Caribou CSH permit application is true and correct to the best of the coordinator's knowledge; monitors and reports on compliance with the conditions of a Copper Basin Caribou CSH permit; and serves as the primary point of contact, among other duties. ADF&G will issue one Copper Basin Community Caribou Harvest Permit to each coordinator.

For 2018-2019, group coordinators must apply online during the October 1–December 15, 2017 until 5 p.m. (AKST) application period at <http://hunt.alaska.gov/>. Once group coordinators have successfully applied online they will receive, via email, a 2018-2019 group number. Group coordinators will need to save this email and share the group number with individuals and households wanting to participate in the CSH hunt.

Groups will not be formally approved until:

- 1) at least 25 eligible group members have applied (including the group coordinator), and
- 2) all caribou CSH permit reporting requirements from the previous regulatory year have been met (not applicable to first time CSH groups).

There is no limit to the number of communities or groups that may apply for a Copper Basin Caribou CSH permit and there is no limit to the number of participants who may subscribe to a community or group, except that there must be 25 or more verified eligible members in each group.

### **INDIVIDUALS/HOUSEHOLDS**

The online application period for participant applications is November 1–December 15, 2017 until 5 p.m. (AKST). Applications must include a valid 2018-2019 group number provided by the group coordinator. Incomplete applications will be void per 5 AAC 92.050 *Required Permit Hunt Conditions and Procedures*.

Each household must submit one completed participant application. CSH applicants must be Alaska residents at the time of application. All members of the household must be listed on the application and are subject to all CSH hunt eligibility requirements and conditions. The coordinator must ensure that group members understand the terms and conditions of the CSH permit hunt.

A “household” means that group of people domiciled in the same residence per 5 AAC 92.990 (23) *Definitions*.

By submitting a completed participant application, all household members are certifying they have read, understood, and will comply with the hunt conditions as well as the applicable Board of Game findings (2006-170-BOG *Game Management Unit 13 Caribou and Moose Subsistence Uses*).

ADF&G will issue one Copper Basin CSH caribou harvest ticket/report to each household. ADF&G will mail CSH harvest tickets to those eligible households who provided a hunting license on the participant application. Eligible participants who do not provide hunting license information on the application will be required to present a valid hunting license to department staff, in-person, at the ADF&G offices in Palmer or Glennallen in order to receive a harvest ticket.

Hunters must abide by all applicable state hunting regulations and statute requirements including licensing, hunter education, and reporting requirements. Similar to other state hunts, CSH harvest tickets must be carried in the field while hunting, they must be validated immediately upon killing an animal and before leaving the kill site, and must remain in the hunter's possession until the animal has been delivered to the location of processing for human consumption.

## **PARTICIPANT ELIGIBILITY**

All household members subscribing to the Copper Basin Caribou CSH hunt must meet the following eligibility requirements. The requirements apply to the same regulatory years as the CSH participant application (2018-2019).

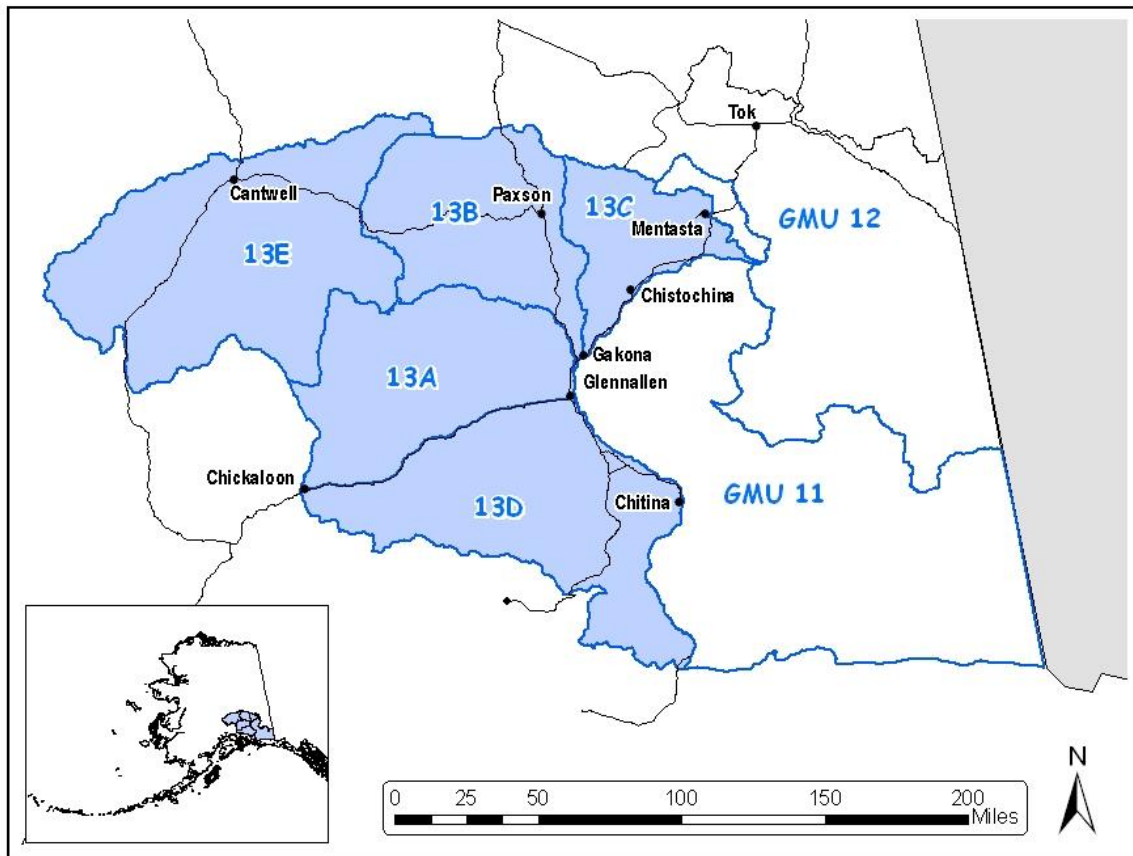
- No member of the household can hold any drawing/Tier I/Tier II/registration caribou hunts, hold general season caribou harvest tickets, or hold federal caribou permits outside of the CSH hunt area. After the CSH hunt has ended, if the household was unsuccessful in filling the CSH bag limit, household members may hunt in areas outside the CSH hunt area with general caribou harvest tickets or other state caribou permits where the bag limit is greater than one caribou per household.
- No member of the household can hold state or federal drawing/Tier I/Tier II/registration moose permits outside the Copper Basin CSH hunt area.
- All household members agree to the hunt conditions herein.
- A member of the household can be on the Failure to Report (FTR) list and be counted as a group member, but will not be allowed to participate in hunting activities.
- A “community” or “group” is a group of people linked by a common interest in, and participation in uses of, an area and the wildlife populations in that area, that is consistent with the customary and traditional use pattern of that wildlife population and area as defined by the board (5 AAC 92.072 (i)(2)).

## **APPLICATION PROCESS DURING THE SECOND YEAR**

Group and individual applications are not required during the second year of the required two-year commitment. The community or group information will carry forward to the second regulatory year. However, the group coordinator will be responsible for ensuring that the contact information for every individual and household is up to date prior to the December 15 deadline for permit applications. Group coordinators will also be responsible for updating individual and household hunting license information. If a valid hunting license (2017 or 2018 hunting license) is not provided, participants will be required to come to the Palmer or Glennallen Fish & Game office to obtain their permit. Group coordinators can manage group information through the “CSH Group Coordinator Access” link online at <http://hunt.alaska.gov/>.

## **COPPER BASIN CSH PERMIT HUNT AREA, AND AREA OPEN TO CARIBOU HUNTING**

The Copper Basin CSH permit hunt area includes all of Unit 11, Unit 13, and a portion of Unit 12 (southwest of the Tok River where it crosses the Glenn Highway Tok Cut-Off) per 5 AAC 92.074 (d). Due to conservation concerns for adjacent caribou herds, only Unit 13 is open to caribou hunting under the terms of a Copper Basin Caribou CSH permit.



## OPEN SEASONS AND BAG LIMITS

The Copper Basin Caribou CSH season is August 10–September 20, and October 21–March 31. The bag limit is one caribou per household. For conservation reasons, the season and bag limit may be modified by ADF&G emergency order. Up to 400 caribou can be taken under the Copper Basin Caribou CSH permit program (applies to all groups collectively).

## DESIGNATED HUNTERS

The CSH program allows a community or group to designate members (from within the group) who may possess particular expertise in hunting to harvest wildlife resources on behalf of the members of the community or group. To take a caribou on behalf of another household (beneficiary), a hunter must carry both the beneficiary's and his or her own CSH caribou harvest ticket in the field while hunting. The harvested caribou must be delivered to the beneficiary. The beneficiary is responsible for all reporting requirements.

## HUNT TERMS AND CONDITIONS

Customary and traditional uses of Nelchina caribou are thoroughly described in 2006-170-BOG. The board found that the subsistence pattern in the Copper Basin is characterized by thorough use of most of

the harvested animal. Therefore, all participants in the Copper Basin Caribou CSH hunt must salvage for human consumption:

1. The heart, liver, kidneys, and fat, as well as all edible meat from the forequarters, hindquarters, ribs, neck, and backbone; and
2. Prior to October 1, meat of the forequarters, hindquarters, and ribs must remain naturally attached to the bones until delivered to the place where it is processed for human consumption.

The board also found that the subsistence pattern is characterized by meaningful communal sharing. At least one communal sharing event featuring caribou harvested under the terms of a Copper Basin CSH hunt must be held. A complete description of the event(s) (date, location, number of participants, amount of meat shared, and so forth) must be included in the final hunt report, to be submitted by the group/community coordinator (see below).

## **CUSTOMARY AND TRADITIONAL USE PATTERN**

The edible products of caribou taken under the terms of a Copper Basin Caribou CSH hunt must be used for human consumption and may not be sold or offered for sale. In order to comply with 5 AAC 92.072 (c)(1)(F), the department must ensure that the applicable customary and traditional use patterns described in board findings are observed by subscribers, including meat sharing. Subscribers need not have already established the pattern of community use summarized below; however, by applying, subscribers will be certifying that they have read, understood, and will voluntarily attempt to participate in and establish the pattern of subsistence use described in the Unit 13 board findings summarized below:

1. Participation in the consistent pattern of noncommercial taking, use, and reliance on Nelchina caribou, Copper Basin moose and other local wild foods. The existing pattern of use has been established over many generations and is focused on the total aggregate of fish, wildlife, and plant resources in the Copper Basin CSH area.
2. Participation in the pattern of taking or use of wild resources from the Copper Basin CSH area that follows a seasonal use pattern of year-round harvest effort in the area, with harvests of moose and caribou by community members in both the fall and winter hunts, when legally permissible.
3. Participation in the pattern of taking or use of wild resources in the Copper Basin CSH area that includes methods and means of harvest characterized by efficiency and economy of effort and cost, especially taking advantage of the maximum opportunity to harvest, as efficiently as possible, a variety of usable species in the Copper Basin CSH area.
4. Participation in the pattern of taking or use of wild resources that occurs in the Copper Basin CSH area due to close ties to the area and a familiarity with the terrain and associated history of the Copper Basin CSH area.
5. Use of means of processing and preserving wild resources from the Copper Basin CSH area that have traditionally been used by past generations, including use of all of the parts required to be removed from the field under the terms of a Copper Basin Caribou CSH permit.
6. Participation in the pattern of taking or use of wild resources from the Copper Basin CSH area that includes the handing down of knowledge of hunting skills, values, and lore about the Copper Basin CSH area from generation to generation. The board considered it critical to the perpetuation of the customary and traditional use pattern to provide opportunities for the young and old to participate in subsistence activities; the board also found it extremely important to stress the need to pass on skills and knowledge associated with use of all parts of the harvested animal.

7. Participation in the pattern of taking wild resources from the Copper Basin CSH area in which the harvest is shared throughout the community, including customary trade, barter, and gift-giving.

In order to observe this pattern, a portion of the edible products of caribou taken under the terms of a Copper Basin Caribou CSH hunt should be primarily shared, in a meaningful way, with other members of the community or group. Hunters should also demonstrate a pattern of meaningful communal sharing that provides first for the needs of the community or group elders and disabled, as identified by the community or group. In addition, hunters who have harvested their first caribou should give a portion to other members of the community or group.

8. Participation in the pattern that includes taking, use, and reliance for subsistence purposes not only on Nelchina caribou and moose, but also on a wide variety of wild resources in the Copper Basin area.

## **REPORTING**

### **HARVEST TICKET REPORTS**

Successful harvest ticket holders must report online, in person, or by phone (907-822-3461) within 5 days of kill. Harvest ticket holders who did not hunt, or were unsuccessful, must mail, report online, or call in Copper Basin CSH harvest reports to ADF&G within 15 days of the close of the season. Reports must be complete in order to meet reporting requirements.

Failure to report may jeopardize sustained yield management of the Nelchina caribou herd and the future of the CSH hunt; therefore, failure to report according to this schedule may result in citation and/or placement of harvest ticket holders on the state Failure to Report (FTR) list. If a group member is placed on the FTR list during the first year of the group's two-year commitment requirement, the group member will still be bound by the CSH hunt conditions, prohibiting them from hunting outside the Copper Basin CSH for moose and caribou during the next regulatory year, and he or she will not be able to participate in CSH hunting activities.

### **GROUP COORDINATOR REPORTS**

To better address the subsistence needs of Copper Basin Caribou CSH participants, the board required that all caribou harvested by CSH participants within the CSH area be accounted for, regardless of whether taken under federal or state regulations. All caribou taken by Copper Basin Caribou CSH participants within the CSH area will count against the up to 400 caribou allowed for the CSH hunt.

In order for the department to ensure that permittees have complied with all regulations addressing the terms and conditions of their Copper Basin Caribou CSH permit, as well as the customary and traditional use pattern described in 2006-170-BOG, and in order to gather additional data on subsistence uses, the community or group coordinator must submit an annual Coordinator Community Harvest Report, which summarizes the group's success in the hunt as well as a description of the communal pattern observed by participants.

Group coordinator reports must be postmarked by May 31, 2019. If the group coordinator report is not submitted by the community or group coordinator by the due date all group participants will be placed on the FTR list and will not be eligible to participate in the CSH hunt during the following regulatory year. All CSH hunting restrictions still apply to any member on the FTR list while the community or group is in the required two-year commitment period.

Some information in these reports may be subject to state confidentiality laws.

Deliver or mail group coordinator and household reports to:

ADF&G  
P. O. Box 47  
Glennallen, AK 99588

## **HOUSEHOLD REPORTS**

Households are requested to complete a Household Community Harvest Report provided by the department. Group coordinators should encourage each household in the group to complete a household questionnaire as well. Completed household reports should be sent to the group coordinator and included in the group report.

## **FOR MORE INFORMATION**

Visit [www.adfg.alaska.gov](http://www.adfg.alaska.gov) for more information, or contact Glennallen ADF&G 822-3461.

The Alaska Department of Fish and Game (ADF&G) administers all programs and activities free from discrimination based on race, color, national origin, age, sex, religion, marital status, pregnancy, parenthood, or disability. The department administers all programs and activities in compliance with Title VI of the Civil Rights Act of 1964, Section 504 of the Rehabilitation Act of 1973, Title II of the Americans with Disabilities Act of 1990, the Age Discrimination Act of 1975, and Title IX of the Education Amendments of 1972.

If you believe you have been discriminated against in any program, activity, or facility please write: ADF&G ADA Coordinator, P.O. Box 115526, Juneau, AK 99811-5526 ; U.S. Fish and Wildlife Service, 4401 N. Fairfax Drive, MS 2042, Arlington, VA 22203; Office of Equal Opportunity, U.S. Department of the Interior, 1849 C Street NW MS 5230, Washington DC 20240.

The department's ADA Coordinator can be reached via phone at the following numbers: (VOICE) 907-465-6077; (Statewide Telecommunication Device for the Deaf) 1-800-478-3648; (Juneau TDD) 907-465-3646; (FAX) 907-465-6078; For information on alternative formats and questions on this publication, please contact the ADF&G Division of Wildlife Conservation at P.O. Box 115526, Juneau, AK, 99811-5526 or (907) 465-4176.