

## MAMMALS

(seen on or near Round Island)

___ Dusky shrew <i>Sorex monticolus</i>	C
___ Tundra vole <i>Microtus oeconomus</i>	C
___ Brown lemming <i>Lemmus trimucronatus</i>	R
___ Red fox <i>Vulpes vulpes</i>	C
___ Arctic fox <i>Alopex lagopus</i>	A
___ Steller sea lion <i>Eumetopias jubatus</i>	C
___ Pacific walrus <i>Odobenus rosmarus</i>	C
___ Harbor seal <i>Phoca vitulina</i>	R
___ Spotted seal <i>P. largha</i>	R
___ Fur seal <i>Callorhinus ursinus</i>	A
___ Gray whale <i>Eschrichtius robustus</i>	U
___ Humpback whale <i>Megaptera novaeangliae</i>	A
___ Orca (killer whale) <i>Orcinus orca</i>	U

## REPORTING NEW OR UNUSUAL SIGHTINGS

Any birds listed as "rare" or "casual/accidental" on this list, and any evidence of nesting (nest or chicks) for a bird not listed as a breeding species, should be shown to Round Island staff for verification.

To document a bird not on this list, you may take a photograph, using a telephoto lens. Whether or not a photo is taken, you should take a very careful look at the bird, remembering as much detail as possible. Point out the bird to others without saying what you think it is. If possible, compare notes while looking at the bird after other observers have had a chance to identify it. Before checking a field guide, write a brief description and sketch the bird showing the pattern of markings and labeling colors. Then check your field guide to confirm your sighting. Report unusual sightings to Round Island staff as soon as possible.

Bird and mammal species inhabiting Round Island are relatively well known. Lists of birds and mammals observed during summer field seasons have been compiled by the following biologists and staff residing on the island. E.H. Miller and B. Hines (1972), L. Aumiller and D. Irons (1977), J. Sherburne (1985, 1986), J. Sherburne and B. Lipchak (1987), P. Hessing and J. Brant (1988), P. Hessing and G. Sheffield (1989, 1990), P. Hessing and T. Osborne (1992) and K. Koenen and S. Kruse (1993, 1994, 1995). The lists were generally compiled from May to August.

Relative abundance is less well known. Only Miller, Aumiller, P.D. Arneson and D. McDonald (1976, 1977), and R.J. Sinnott (1990) have attempted to quantify abundance. Most of the accidental species have been identified by only one observer; hence they are unverified. Other nesting birds and casual/accidental vagrants are likely to be observed. Hopefully, this list will focus future attention on the birds of Round Island, and it will be updated periodically as new observations are collected. Very little is known about the birds on other islands in the Sanctuary.

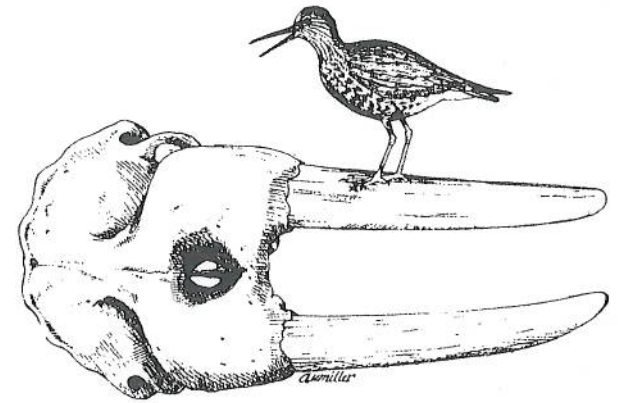
Round Island seems to attract fewer unusual birds than islands in the western Aleutians, and many of the species on this list are casual or accidental vagrants that are unlikely to be encountered by visitors. If you are hoping to see some of the more typical birds of western Alaska, plan to spend at least a few hours birding in the vicinity of Togiak Cannery and Dillingham.

\*\*\*\*

Compiled by Alaska Department of Fish and Game,  
Division of Wildlife Conservation.

PHONE (907) 267-2180 Anchorage  
(907) 842-2334 Dillingham

1st Revision: March 1996



# BIRDS OF ROUND ISLAND ALASKA

WALRUS ISLANDS  
STATE GAME SANCTUARY

## A CHECKLIST

ALASKA DEPARTMENT OF FISH AND GAME  
DIVISION OF WILDLIFE CONSERVATION



C Common - species occurs in all or nearly all proper habitats, but some areas of presumed suitable habitat are occupied sparsely or not at all or the island regularly hosts large numbers of the species.

U Uncommon - species occurs regularly, but, uses only some or very little of the suitable habitat or the island regularly hosts relatively small numbers of the species; not observed regularly even in proper habitats.

R Rare - species occurs, or probably occurs, regularly on and near the island, but in very small numbers.

A Casual/Accidental - species has been recorded no more than a few times, but irregular observations are likely over a period of years or a species so far from its normal range that further observations are unlikely.

\* Nesting - known or probable nesting species on Round Island.

SPECIES	STATUS
FAMILY: Gaviidae	
___ Red-throated loon <i>Gavia stellata</i>	A
___ Pacific loon <i>G. pacifica</i>	A
FAMILY: Podicipedidae	
___ Horned grebe <i>Podiceps auritus</i>	A
___ Red-necked grebe <i>P. grisegena</i>	A
FAMILY: Procellariidae	
___ Northern fulmar <i>Fulmarus glacialis</i>	R
___ Short-tailed shearwater <i>Puffinus tenuirostris</i>	R
FAMILY: Phalacrocoracidae	
___ Double-crested cormorant <i>Phalacrocorax auritus</i>	R
___ Pelagic cormorant <i>P. pelagicus</i>	C*
___ Red-faced cormorant <i>P. urile</i>	R
FAMILY: Anatidae	
___ Emperor goose <i>Chen canagica</i>	R
___ Brant <i>Branta bernicla</i>	A
___ Canada goose <i>B. canadensis</i>	A
___ Green-winged teal <i>Anas crecca</i>	R
___ Mallard <i>A. platyrhynchos</i>	A
___ Northern pintail <i>A. acuta</i>	R
___ Northern shoveler <i>A. clypeata</i>	A
___ American wigeon <i>A. americana</i>	R
___ Common eider <i>Somateria mollissima</i>	A
___ King eider <i>S. spectabilis</i>	U
___ Steller's eider <i>Polysticta stelleri</i>	R
___ Harlequin duck <i>Histrionicus histrionicus</i>	U
___ Oldsquaw <i>Clangula hyemalis</i>	R
___ Black scoter <i>Melanitta nigra</i>	A
___ White-winged scoter <i>M. fusca</i>	R
___ Common goldeneye <i>Bucephala clangula</i>	A

___ Bufflehead <i>B. albeola</i>	A
___ Red-breasted merganser <i>Mergus serrator</i>	A
FAMILY: Accipitridae	
___ Osprey <i>Pandion haliaetus</i>	A
___ Bald eagle <i>Haliaeetus leucocephalus</i>	U*
___ Northern harrier <i>Circus cyaneus</i>	R
___ Rough-legged hawk <i>Buteo lagopus</i>	R
FAMILY: Falconidae	
___ Merlin <i>Falco columbarius</i>	A
___ Peregrine falcon <i>F. peregrinus</i>	R
FAMILY: Phasianidae	
___ Willow ptarmigan <i>Lagopus lagopus</i>	A
___ Rock ptarmigan <i>L. mutus</i>	A
FAMILY: Gruidae	
___ Sandhill crane <i>Grus canadensis</i>	R
FAMILY: Charadriidae	
___ Semipalmated plover <i>Charadrius semipalmatus</i>	A
FAMILY: Scolopacidae	
___ Wandering tattler <i>Heteroscelus incanus</i>	U
___ Spotted sandpiper <i>Actitis macularia</i>	A
___ Whimbrel <i>Numenius phaeopus</i>	R
___ Ruddy turnstone <i>Arenaria interpres</i>	R
___ Black turnstone <i>A. melanocephala</i>	R
___ Surfbird <i>Aphriza virgata</i>	A
___ Western sandpiper <i>Calidris mauri</i>	R
___ Rock sandpiper <i>C. pilicnemis</i>	R
___ Dunlin <i>C. alpina</i>	R
___ Short-billed dowitcher <i>Limnodromus griseus</i>	A
___ Common snipe <i>Gallinago gallinago</i>	U*
___ Red-necked phalarope <i>Phalaropus lobatus</i>	A
___ Red phalarope <i>P. fulicaria</i>	A
FAMILY: Laridae	
___ Pomarine jaeger <i>Stercorarius pomarinus</i>	A
___ Long-tailed jaeger <i>S. longicaudus</i>	A
___ Bonaparte's gull <i>Larus philadelphia</i>	A
___ Mew gull <i>L. canus</i>	A
___ Glaucous-winged gull <i>L. glaucescens</i>	C*
___ Glaucous gull <i>L. hyperboreus</i>	U
___ Black-legged kittiwake <i>Rissa tridactyla</i>	C*
___ Arctic tern <i>Sterna paradisaea</i>	A
FAMILY: Alcidae	
___ Common murre <i>Uria aalge</i>	C*
___ Thick-billed murre <i>U. lomvia</i>	R
___ Pigeon guillemot <i>Cepphus columba</i>	C*
___ Marbled murrelet <i>Brachyramphus marmoratus</i>	A
___ Parakeet auklet <i>Cyclorhynchus psittacula</i>	C*
___ Least auklet <i>Aethia pusilla</i>	U*
___ Crested auklet <i>A. cristatella</i>	U*
___ Tufted puffin <i>Fratercula cirrhata</i>	C*
___ Horned puffin <i>F. corniculata</i>	C*
FAMILY: Trochilidae	
___ Rufous hummingbird <i>Selasphorus rufus</i>	A
FAMILY: Strigidae	
___ Short-eared owl <i>Asio flammeus</i>	R
FAMILY: Picidae	
___ Woodpecker (hairy or downy) <i>Picoides</i> sp.	A

FAMILY: Tyrannidae	
___ Olive-sided flycatcher <i>Contopus borealis</i>	A
___ Say's phoebe <i>Sayornis saya</i>	A
FAMILY: Alaudidae	
___ Horned lark <i>Eremophila alpestris</i>	A
FAMILY: Hirundinidae	
___ Tree swallow <i>Tachycineta bicolor</i>	R
___ Bank swallow <i>Riparia riparia</i>	R
___ Cliff swallow <i>Hirundo pyrrhonota</i>	A
FAMILY: Corvidae	
___ Black-billed magpie <i>Pica pica</i>	A
___ Common raven <i>Corvus corax</i>	C*
FAMILY: Paridae	
___ Black-capped chickadee <i>Parus atricapillus</i>	A
FAMILY: Cinclidae	
___ American dipper <i>Cinclus mexicanus</i>	A
FAMILY: Muscicapidae	
___ Ruby-crowned kinglet <i>Regulus calendula</i>	A
___ Hermit thrush <i>Catharus guttatus</i>	C*
___ American robin <i>Turdus migratorius</i>	A
___ Varied thrush <i>Ixoreus naevius</i>	A
FAMILY: Motacillidae	
___ Yellow wagtail <i>Motacilla flava</i>	R
___ American pipit <i>Anthus rubescens</i>	C*
FAMILY: Emberizidae	
___ Orange-crowned warbler <i>Vermivora celata</i>	U*
___ Yellow warbler <i>Dendroica petechia</i>	U*
___ Yellow-rumped warbler <i>D. coronata</i>	R
___ Wilson's warbler <i>Wilsonia pusilla</i>	U*
___ American tree sparrow <i>Spizella arborea</i>	U*
___ Savannah sparrow <i>Passerculus sandwichensis</i>	C*
___ Fox sparrow <i>Passerella iliaca</i>	U*
___ Song sparrow <i>Melospiza melodia</i>	R
___ Golden-crowned sparrow <i>Zonotrichia atricapilla</i>	C*
___ White-crowned sparrow <i>Z. leucophrys</i>	U
___ Dark-eyed junco <i>Junco hyemalis</i>	A
___ Lapland longspur <i>Calcarius lapponicus</i>	C*
___ Snow bunting <i>Plectrophenax nivalis</i>	R
___ Western meadowlark <i>Sturnella neglecta</i>	A
___ Rusty blackbird <i>Euphagus carolinus</i>	A
___ Brown-headed cowbird <i>Molothrus ater</i>	A
FAMILY: Fringillidae	
___ Rosy finch <i>Leucosticte arctoa</i>	R
___ White-winged crossbill <i>Loxia leucoptera</i>	A
___ Common redpoll <i>Carduelis flammea</i>	U*
___ Hoary redpoll <i>C. hornemanni</i>	A