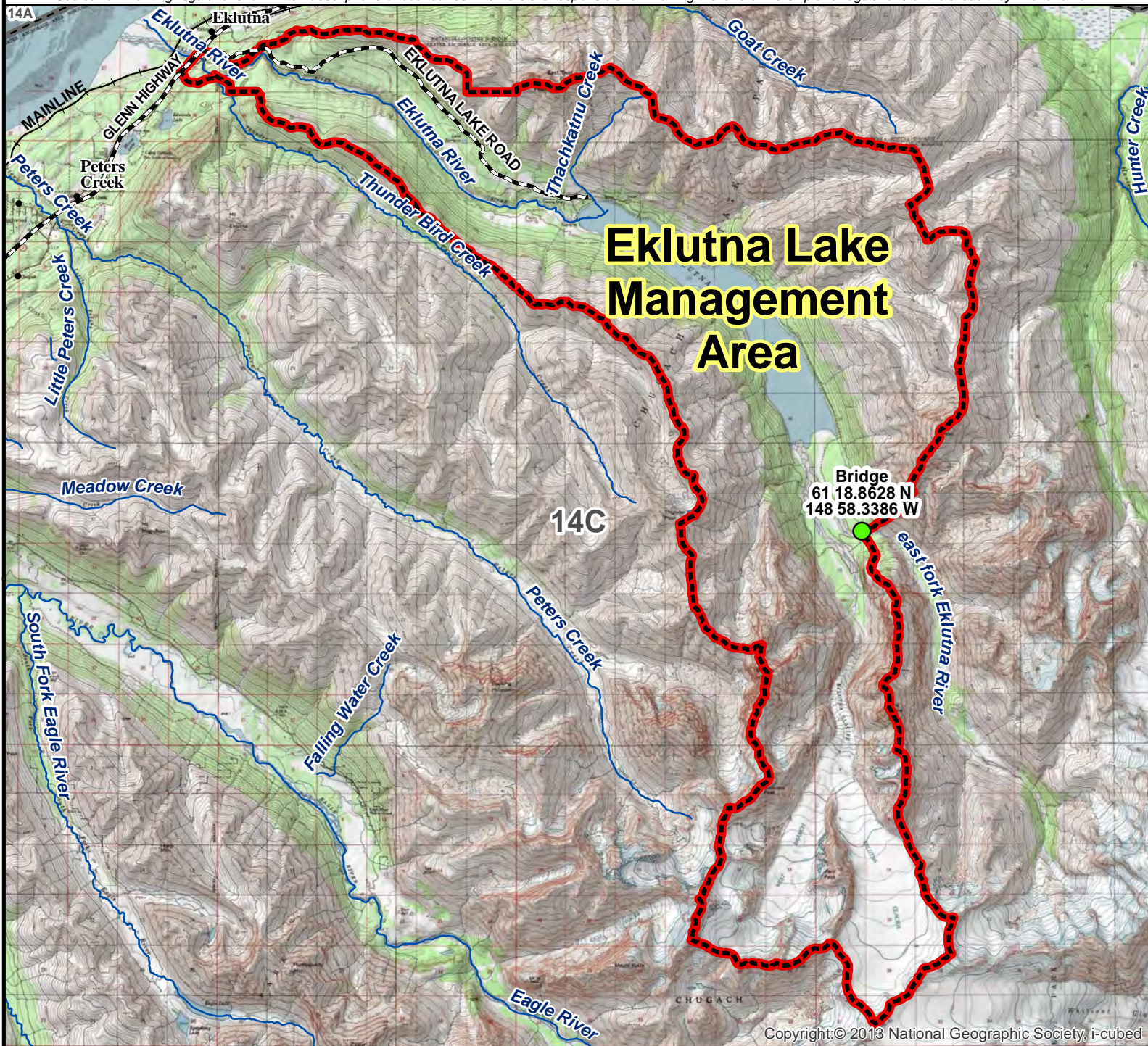


# Unit 14C Eklutna Lake Management Area

This map is intended for hunt planning use, not for determining legal property or regulatory boundaries. Content is compiled from various sources and is subject to change without notice. See current hunting regulations for written descriptions of boundaries. Hunters are responsible for knowing the land ownership and regulations of the areas they intend to hunt.



Copyright: © 2013 National Geographic Society, i-cubed

**AREA DESCRIPTION:** Unit 14C, the area consists of the drainages of Eklutna River and Eklutna Lake in Unit 14C upstream from the Glenn Highway, excluding those drainages flowing into the east fork Eklutna River upstream from the bridge (61 18.8628 N, 148 58.3386 W) above the Lake and Thunderbird Creek.

The area is closed to hunting, except that (i) small game may be taken by falconry or bow and arrow only, from the day after Labor Day through April 30; (ii) moose hunting is allowed by permit with bow and arrow only; (iii) black bear may be taken by bow and arrow only, from the day after Labor Day through May 31; a person wishing to hunt a black bear must complete a hunter safety course for which a certification of completion is issued; (iv) sheep may be taken by permit, and by bow and arrow only, from the day after Labor Day through October 31; (v) brown bear hunting is allowed by permit with bow and arrow only, from the day after Labor Day through May 31; a person wishing to hunt a brown bear must complete a hunter safety course for which a certification of completion is issued.

N

0 1.25 2.5 5 Miles

- Management Area
- Subunit Boundary
- Closed Area
- Controlled Use Area
- National Park/Monument
- National Wildlife Refuge
- Military Closure
- Other State Areas
- Closed to Hunting