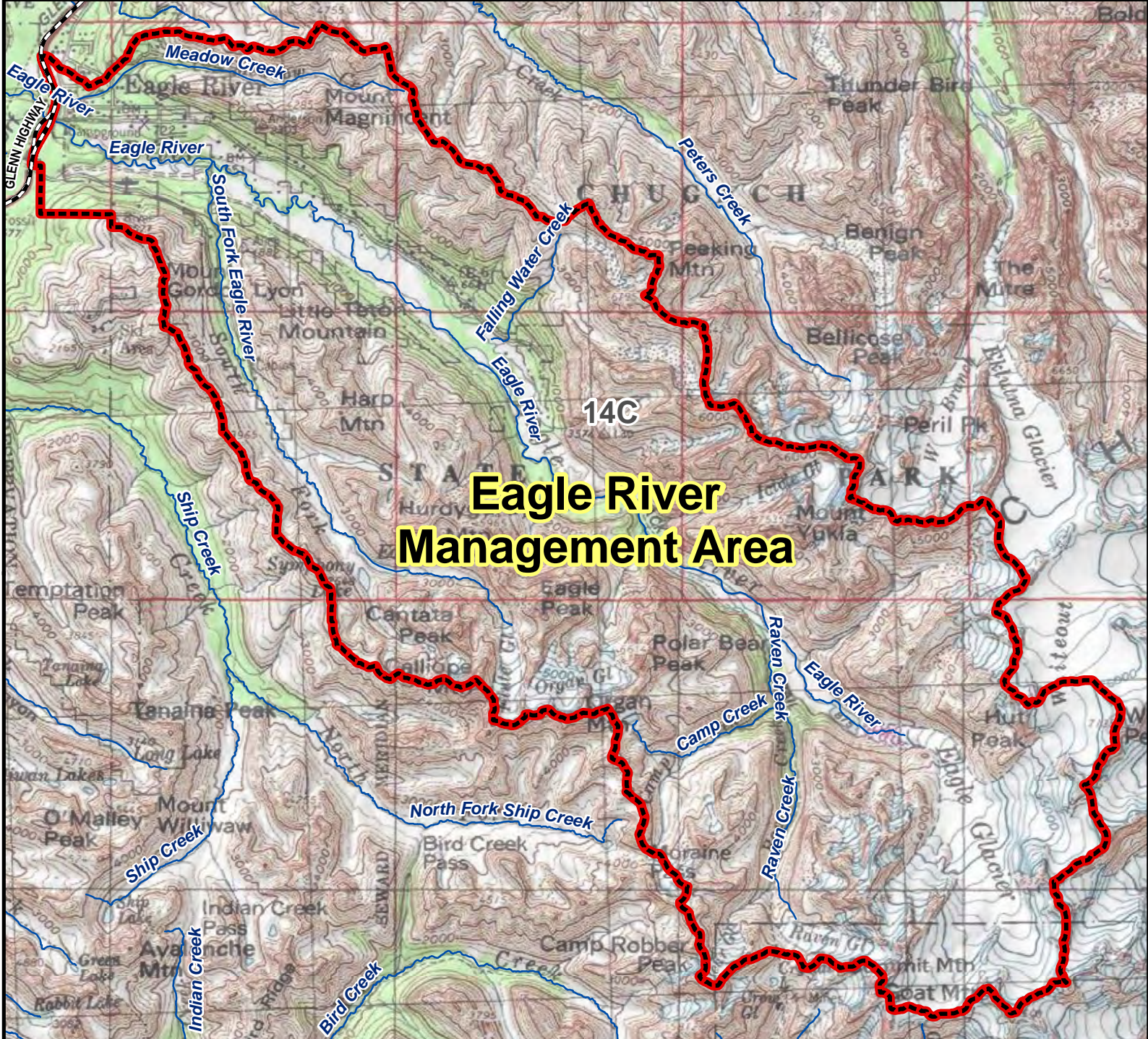


# Unit 14C Eagle River Management Area



**AREA DESCRIPTION:** Unit 14C, the area consists of the Eagle River drainage upstream from the Glenn Highway in Unit 14C.

The area is closed to hunting, except (i) sheep hunting by permit; (ii) black and brown bear hunting by permit; before hunting a bear, a person wishing to hunt must complete a hunter safety course for which a certification of completion is issued; (iii) small game may be taken by archery, shotgun, falconry, or muzzleloader by permit; (iv) deleterious exotic wildlife may be taken by air rifle with rifled barrel, bow and arrow (with blunts or other special small-game points), and falconry only; (v) goat hunting by permit.

N  
0 1.25 2.5 5 Miles

- Management Area
- Subunit Boundary
- Closed Area
- Controlled Use Area
- National Park/Monument
- National Wildlife Refuge
- Military Closure
- Other State Areas
- Closed to Hunting