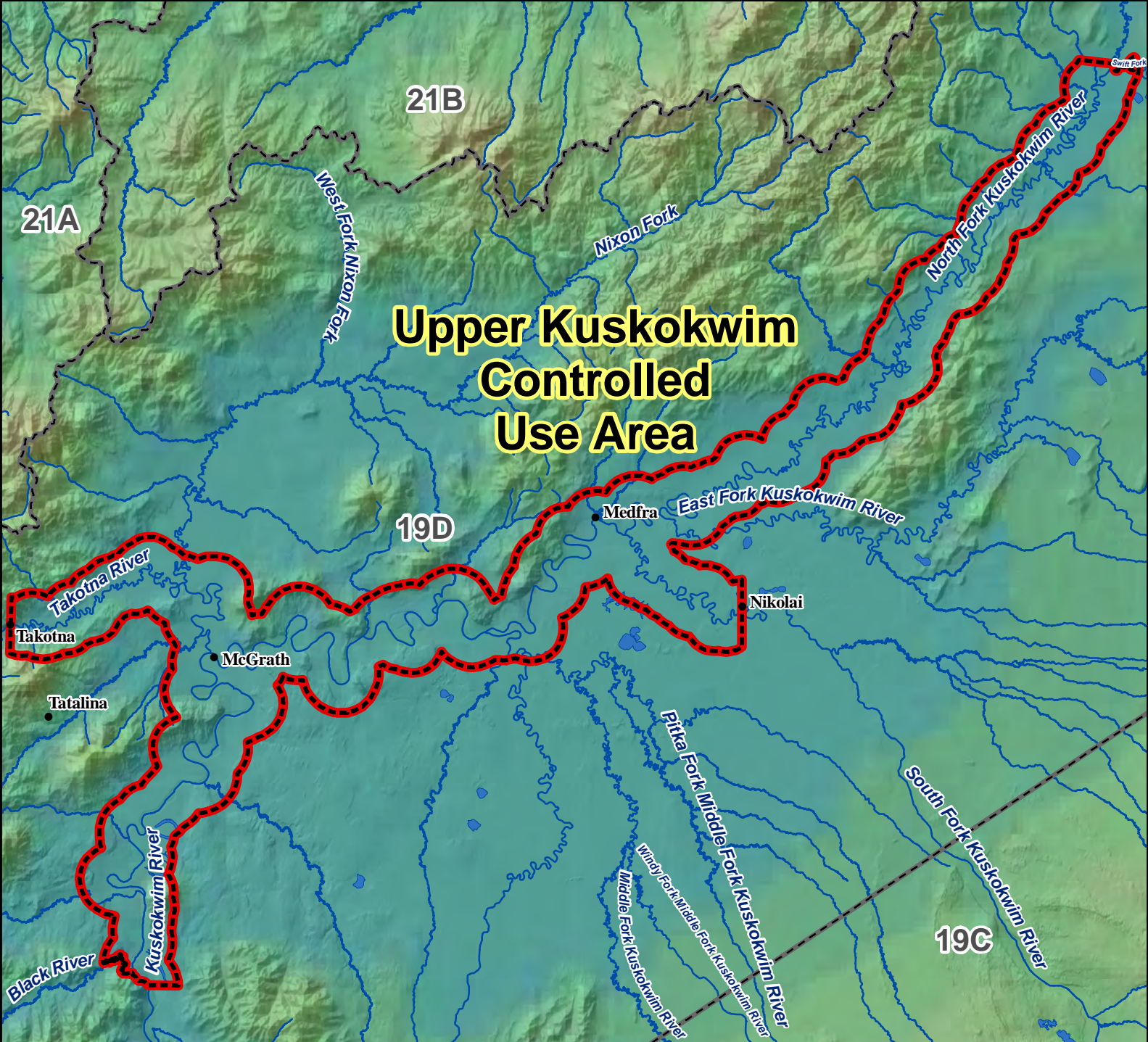


Unit 19D Upper Kuskokwim Controlled Use Area

This map is intended for hunt planning use, not for determining legal property or regulatory boundaries. Content is compiled from various sources and is subject to change without notice. See current hunting regulations for written descriptions of boundaries. Hunters are responsible for knowing the land ownership and regulations of the areas they intend to hunt.



Upper Kuskokwim Controlled Use Area

AREA DESCRIPTION: Unit 19D, the area consists of that portion of Unit 19D extending two miles on either side of, and including, the Kuskokwim River, upstream from the mouth of the Black River to the mouth of the Swift Fork, two miles on either side of, and including, the Takotna River, from the mouth of the Takotna River to Takotna, and two miles on either side of, and including, the South Fork from the mouth of the South Fork to Nikolai.

The area is closed to the use of aircraft for hunting moose, including transportation of any moose hunter, their hunting gear and/or moose parts Sept 1- Sept 25. However, this does not apply to transportation of a moose hunter or moose parts by aircraft between publicly owned airports, including McGrath, Medfra, Nikolai, and Takotna, in the controlled use area or the transportation into the area of game meat that has been processed for human consumption.

