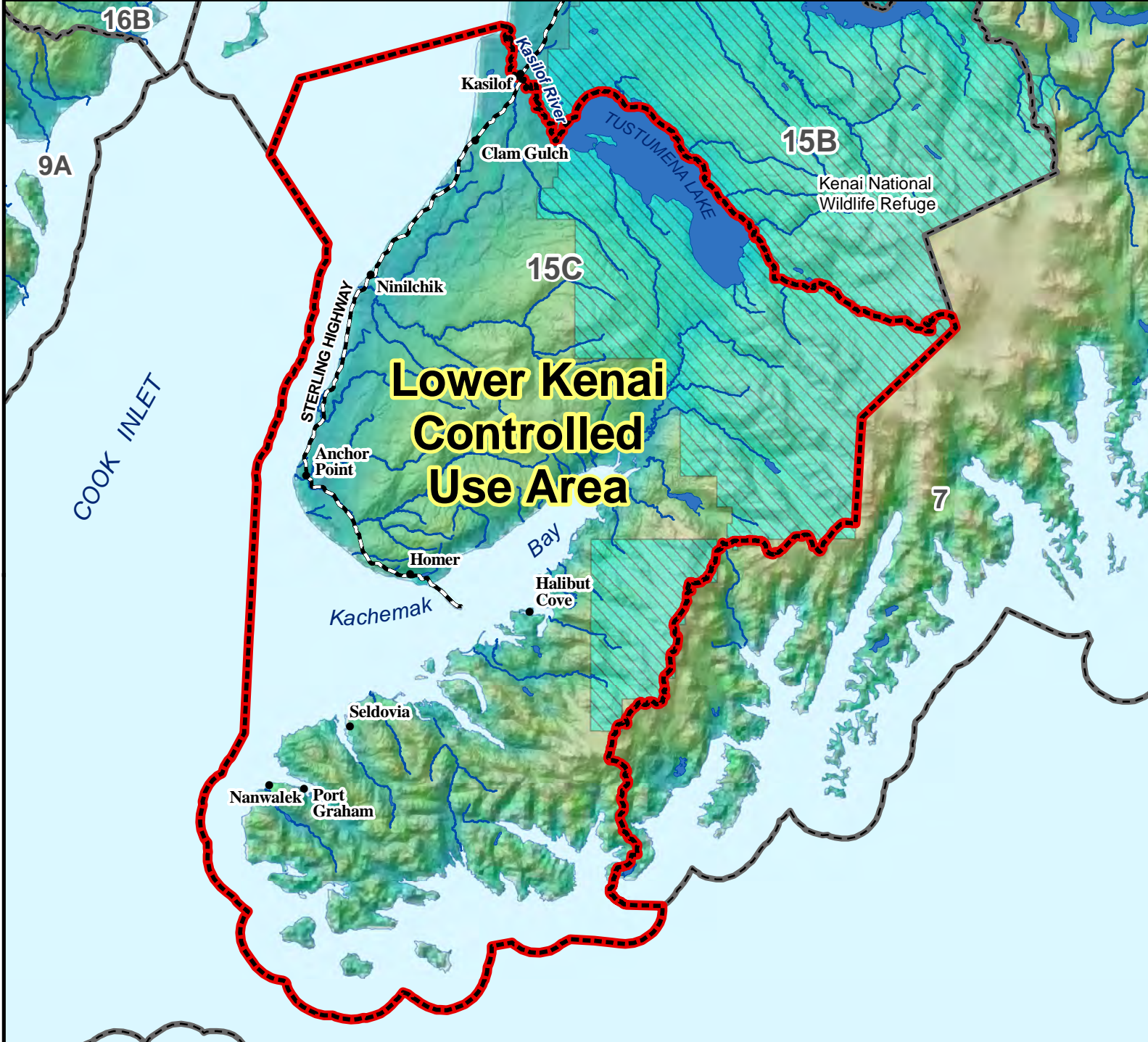


Unit 15C Lower Kenai Controlled Use Area

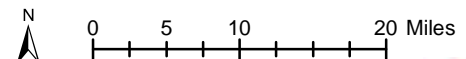
This map is intended for hunt planning use, not for determining legal property or regulatory boundaries. Content is compiled from various sources and is subject to change without notice. See current hunting regulations for written descriptions of boundaries. Hunters are responsible for knowing the land ownership and regulations of the areas they intend to hunt.



AREA DESCRIPTION: Unit 15C, the area consists of Unit 15C.

(ii) The area is closed to the use of any motorized vehicle except an aircraft or boat for moose hunting, including the transportation of moose hunters, their hunting gear, or parts of moose from September 16 through September 19 and September 22 through September 25; however, this provision does not apply to the use of a motorized vehicle on a highway maintained by the state or borough or on the gravel portions of Oilwell, Brody, and Tustumena Lake Roads or a driveway used for direct access to a primary residence or business.

(iii) During the periods specified in (ii) of this subparagraph, a hunter who travels by motorized vehicle on the Unit 15C highway system and then leaves and travels off that highway system in that motorized vehicle may not hunt moose, including transporting moose hunters, their hunting gear, or parts of moose, or in any other manner initiate or participate in moose hunting activities, until after the hunter returns the motorized vehicle to the Unit 15C highway system; upon returning the motorized vehicle to that highway system, the hunter may initiate or participate in legal moose hunting activities so long as the hunter leaves the motorized vehicle on the Unit 15C highway system.



- Controlled Use Area
- Subunit Boundary
- Closed Area
- Management Area
- National Park/Monument
- National Wildlife Refuge
- Military Closure
- Other State Areas
- Closed to Hunting

