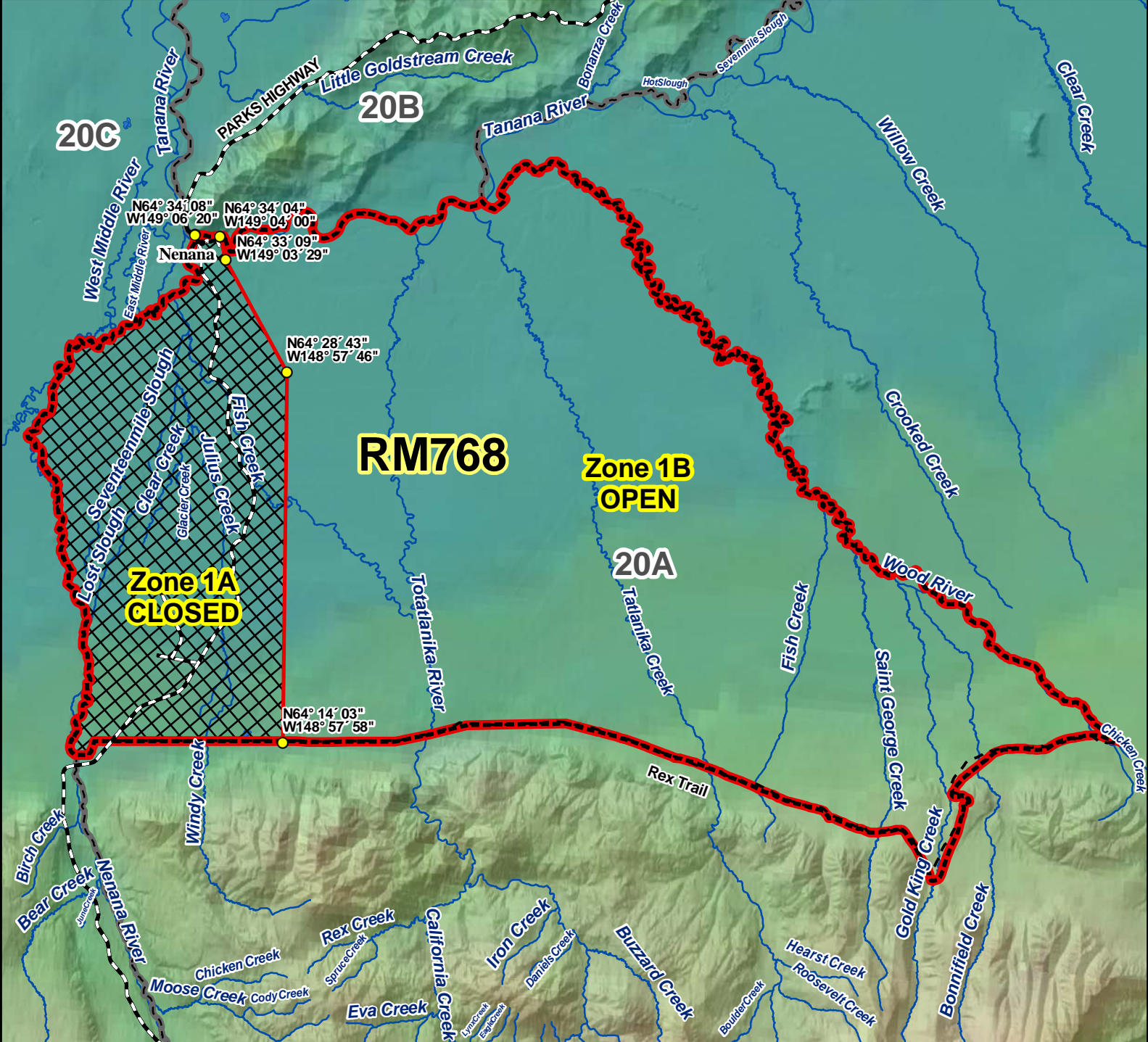


RM768 Moose Registration Permit Hunt



AREA DESCRIPTION: Unit 20A, that portion bounded on the north by the north bank of the Tanana River, bounded on the east by the east bank of the Wood River, bounded on the south by the south side of the Rex Trail, and bounded on the west by the east bank of the Nenana River.

Zone 1A: that portion of Unit 20A Zone 1 bounded by a line beginning at unnamed trail originating at the east end of the Nenana Municipal Airport near the confluence of Meriwether Slough and the Tanana River at approximately N64° 33'09", W149° 03'29"; then southeasterly along said trail to its intersection with the Northern Intertie right-of-way at N64° 28'43", W148° 57'46"; then south along the west side of the Northern Intertie right-of-way to its intersection with the Rex Trail at N64° 14'03", W148° 57'58"; then west along the south side of the Rex Trail to the Nenana River; then downstream along the east bank of the Nenana River to the confluence of the Tanana River; then northerly in a straight line to the north bank of the Tanana River at N64° 34'08", W149° 06'20"; then upstream along the north bank of the Tanana River to a point approximately 0.4 miles above the Alaska Railroad train bridge at N64° 34'04", W149° 04'00"; then southerly to the point of origin.

Remainder of RM768 (Zone 1B): that portion of Unit 20A Zone 1 bounded by a line beginning at unnamed trail originating at the east end of the Nenana Municipal Airport near the confluence of Meriwether Slough and the Tanana River at approximately N64° 33'09", W149° 03'29"; then southeasterly along said trail to its intersection with the Northern Intertie right-of-way at N64° 28'43", W148° 57'46"; then south along the west side of the Northern Intertie right-of-way to its intersection with the Rex Trail at N64° 14'03", W148° 57'58"; then east along the south side of the Rex Trail to its intersection with the Wood River at N64° 14'00", W147° 41'45"; then downstream in a northwesterly direction along the east bank of the Wood River to its confluence with the south bank of the Tanana River at N64° 35'20", W148° 39'39"; then northwesterly in a straight line to the north bank of the Tanana River at N64° 35'29", W148° 39'58"; then downstream along the north bank of the Tanana River to a point approximately 0.4 miles upstream from the Alaska Railroad train bridge at N64° 34'04", W149° 04'00"; then southerly in a straight line to the point of origin.

See Alaska Hunting Regulations booklet for more specific information on this hunt.

N

0 2.75 5.5 11 Miles

- Hunt Area
- Subunit Boundary
- Closed Area
- Controlled Use Area
- Management Area
- National Park/Monument
- National Wildlife Refuge
- Military Closure
- Closed to Hunting