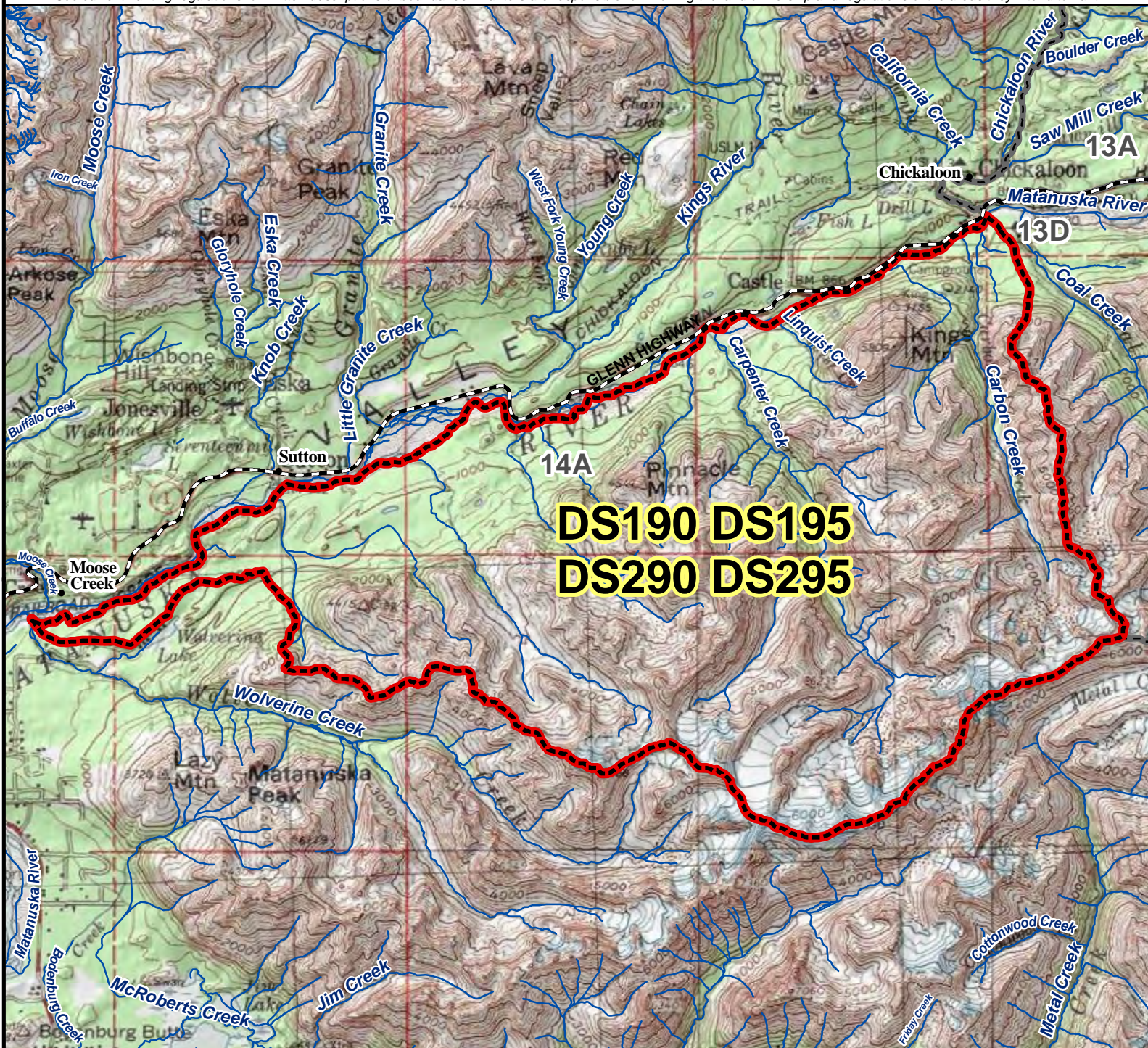


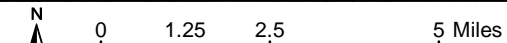
DS190 DS195 DS290 DS295 Sheep Drawing Permit Hunt

This map is intended for hunt planning use, not for determining legal property or regulatory boundaries. Content is compiled from various sources and is subject to change without notice. See current hunting regulations for written descriptions of boundaries. Hunters are responsible for knowing the land ownership and regulations of the areas they intend to hunt.



AREA DESCRIPTION: Unit 14A, that portion south of the Matanuska River, including all of the drainages east of Wolverine Creek drainage, including the Carbon Creek and Carpenter Creek drainages.

Early Season	DS190 Residents
Late Season	DS195 Residents
Early Season	DS290 Nonresidents
Late Season	DS295 Nonresidents



- Hunt Area
- Subunit Boundary
- Closed Area
- Controlled Use Area
- Management Area
- National Park/Monument
- National Wildlife Refuge
- Military Closure
- Other State Areas
- Closed to Hunting

