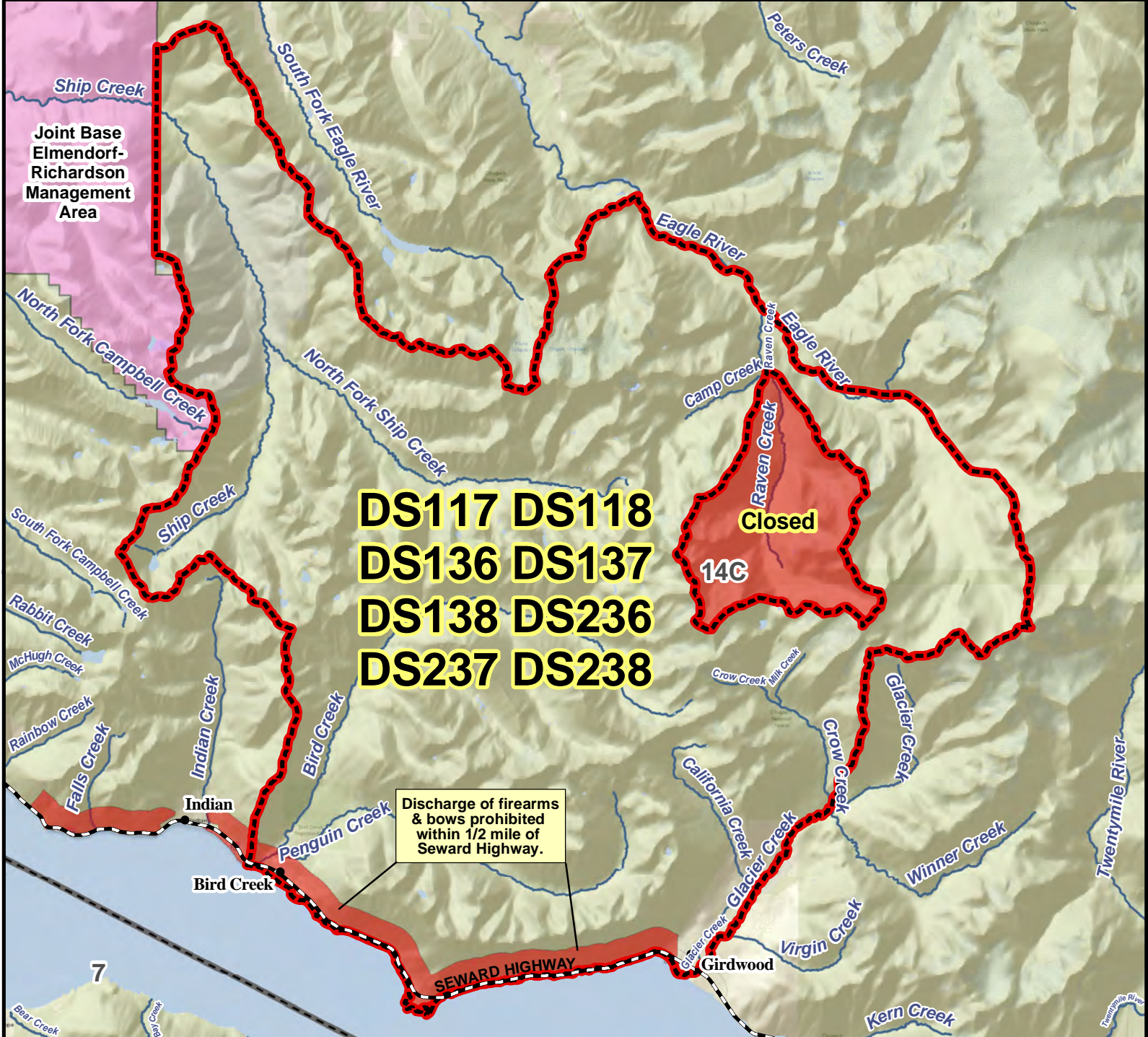


DS117 DS118 DS136 DS137 DS138 DS236 DS237 DS238

Sheep Drawing Permit Hunt

This map is intended for hunt planning use, not for determining legal property or regulatory boundaries. Content is compiled from various sources and is subject to change without notice. See current hunting regulations for written descriptions of boundaries. Hunters are responsible for knowing the land ownership and regulations of the areas they intend to hunt.



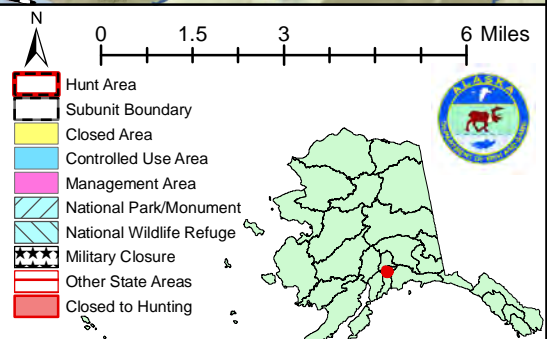
DS117 DS118
DS136 DS137
DS138 DS236
DS237 DS238

Closed

14C

Discharge of firearms & bows prohibited within 1/2 mile of Seward Highway.

AREA DESCRIPTION: That portion of Unit 14C within the drainages of Ship Creek above Joint Base Elmendorf-Richardson (excluding Tokle Creek drainage), Bird Creek, the north side of Glacier Creek, and the south side of Eagle River (excluding Raven Creek) upstream from and including Heritage Falls Creek drainage.



Please refer to the Alaska Hunting Regulations booklet for bag type, seasons, and additional regulations concerning this hunt.