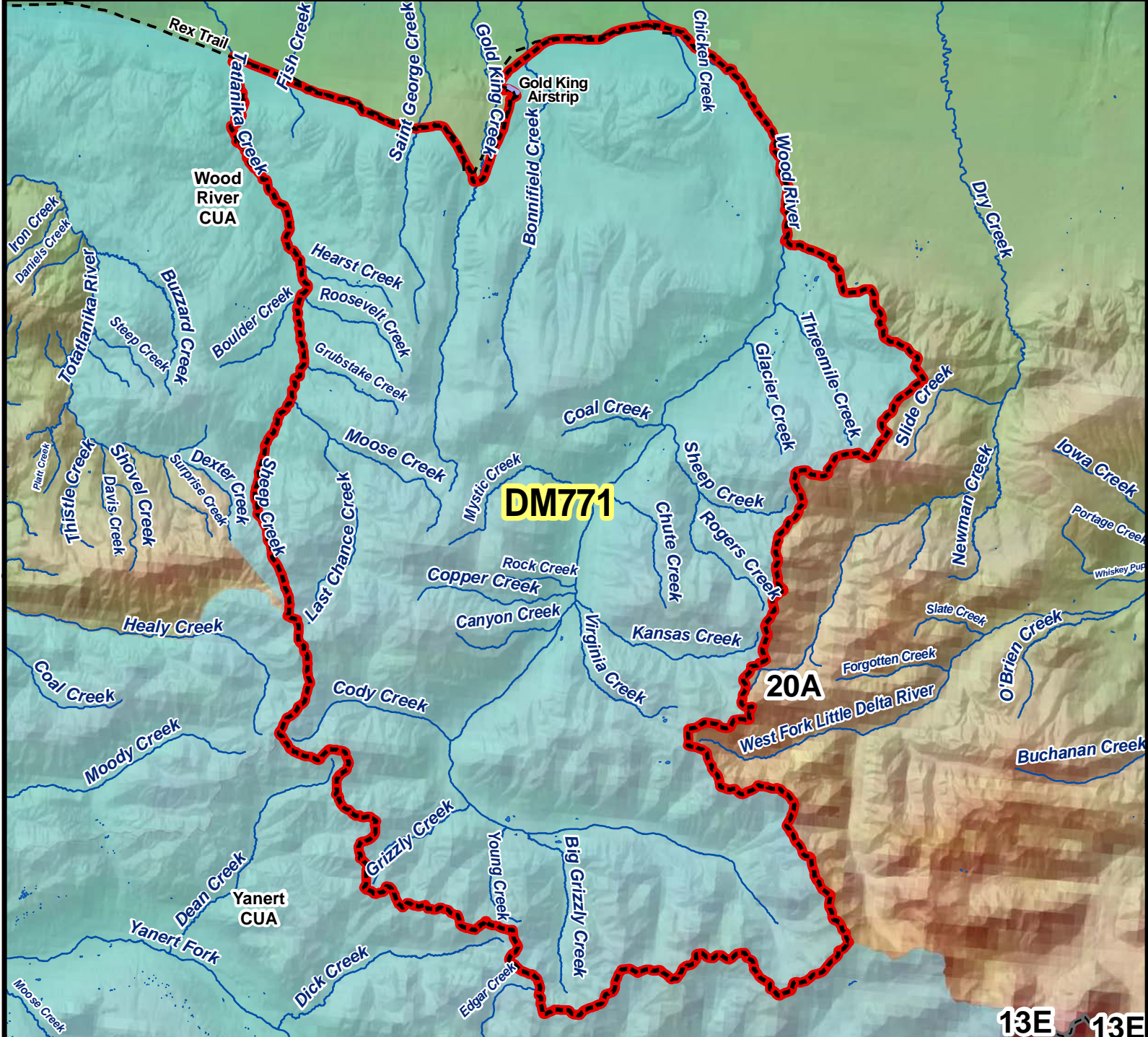


DM771 Moose Drawing Permit Hunt



AREA DESCRIPTION: Unit 20A; that portion of Unit 20A bounded on the north by the south side of the Rex Trail beginning at its intersection with the east bank of Tatlanika Creek, then easterly along the Rex Trail to Gold King airstrip, then from Gold King airstrip along the trail's extension along the north side of Japan Hills to the Wood River; bounded on the east by the east bank of the Wood River, including the Wood River drainage upstream from and including the Snow Mountain Gulch Creek drainage; bounded on the south by the divide separating the Yanert River drainage from Wood River Drainage; bounded on the west by the divide separating the Wood River drainage from the Moody Creek and Healy Creek drainages, the east bank of Sheep Creek from its headwaters downstream to Tatlanika Creek, and the east bank of Tatlanika Creek downstream from its intersection with Sheep Creek to the Rex Trail.

N

0 2.5 5 10 Miles

- Hunt Area
- Subunit Boundary
- Closed Area
- Controlled Use Area
- Management Area
- National Park/Monument
- National Wildlife Refuge
- Military Closure
- Other State Areas
- Closed to Hunting