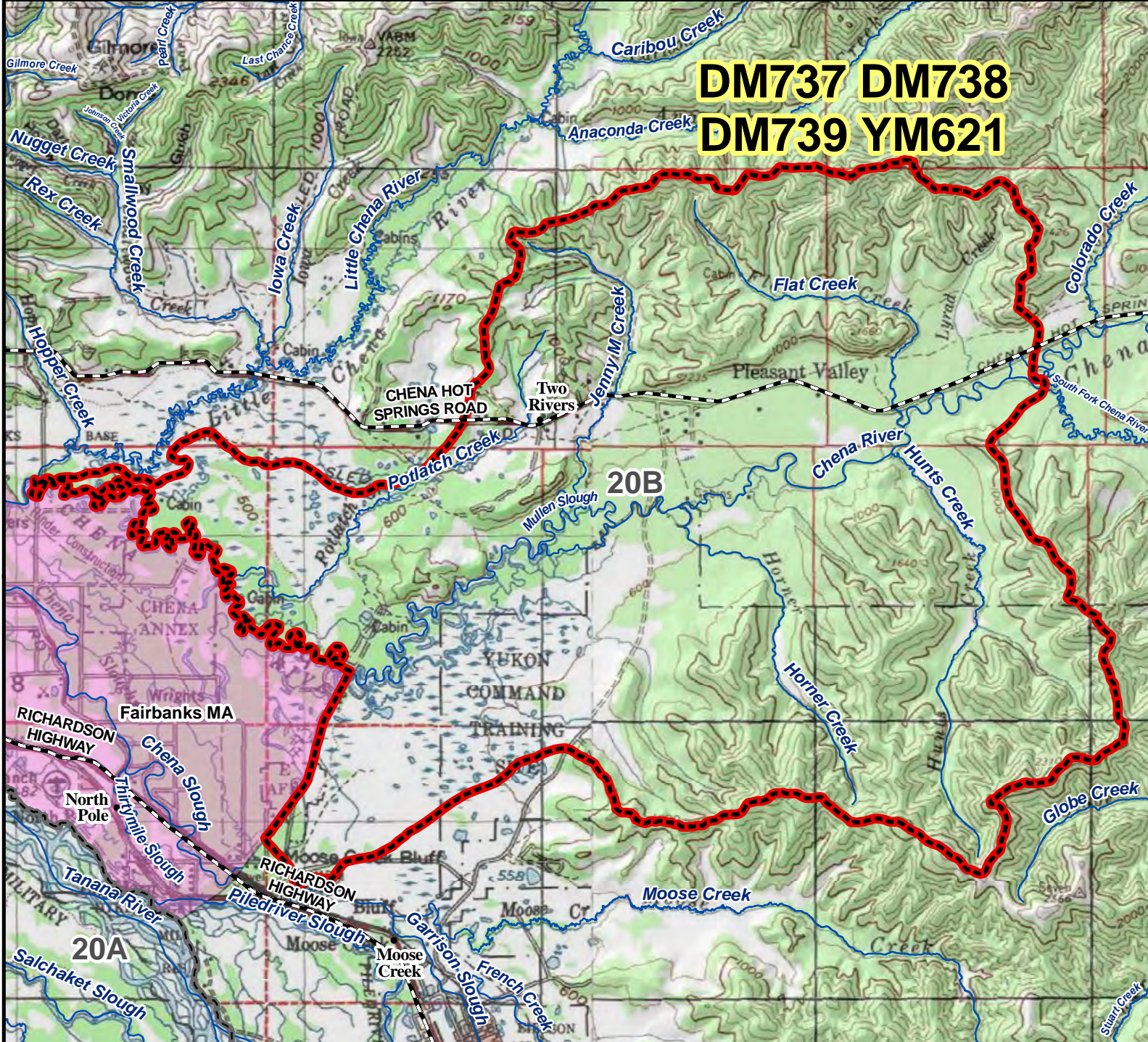
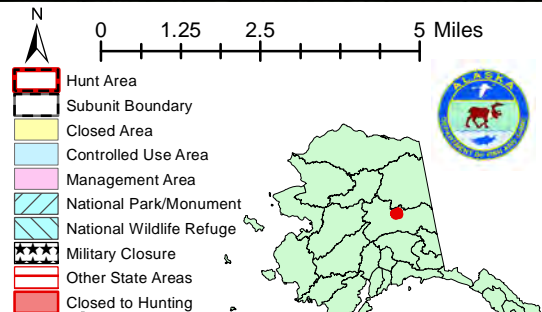


DM737 DM738 DM739 YM621 Moose Drawing and Youth Permit Hunt

This map is intended for hunt planning use, not for determining legal property or regulatory boundaries. Content is compiled from various sources and is subject to change without notice. See current hunting regulations for written descriptions of boundaries. Hunters are responsible for knowing the land ownership and regulations of the areas they intend to hunt.



AREA DESCRIPTION: Unit 20B; that portion of 20B drained by the Chena River, upstream from the drainage of the Little Chena River and the Fairbanks Management Area, and downstream of the drainage of the South Fork of the Chena River.



Please refer to the Alaska Hunting Regulations booklet for bag type, seasons, and additional regulations concerning this hunt.